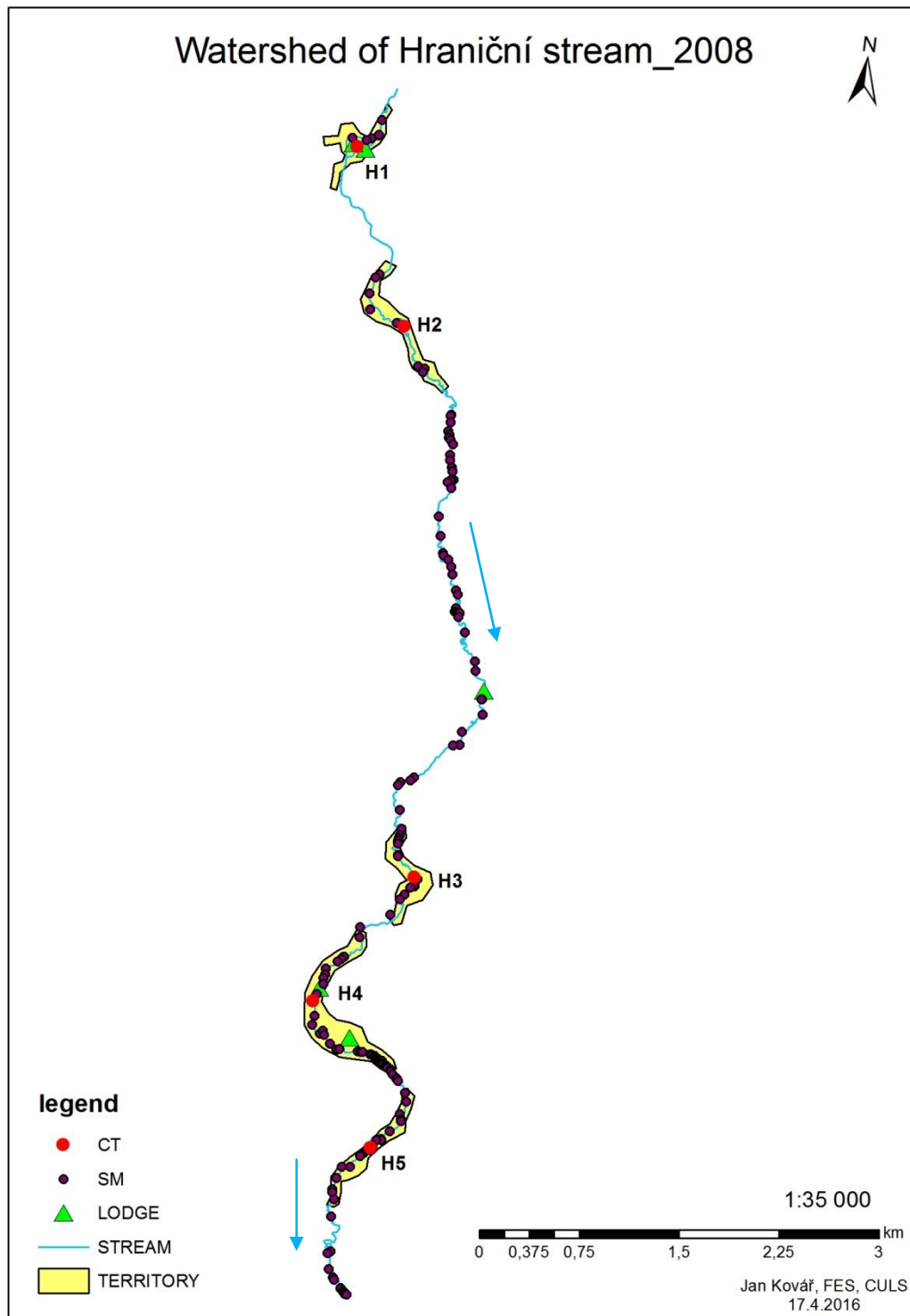
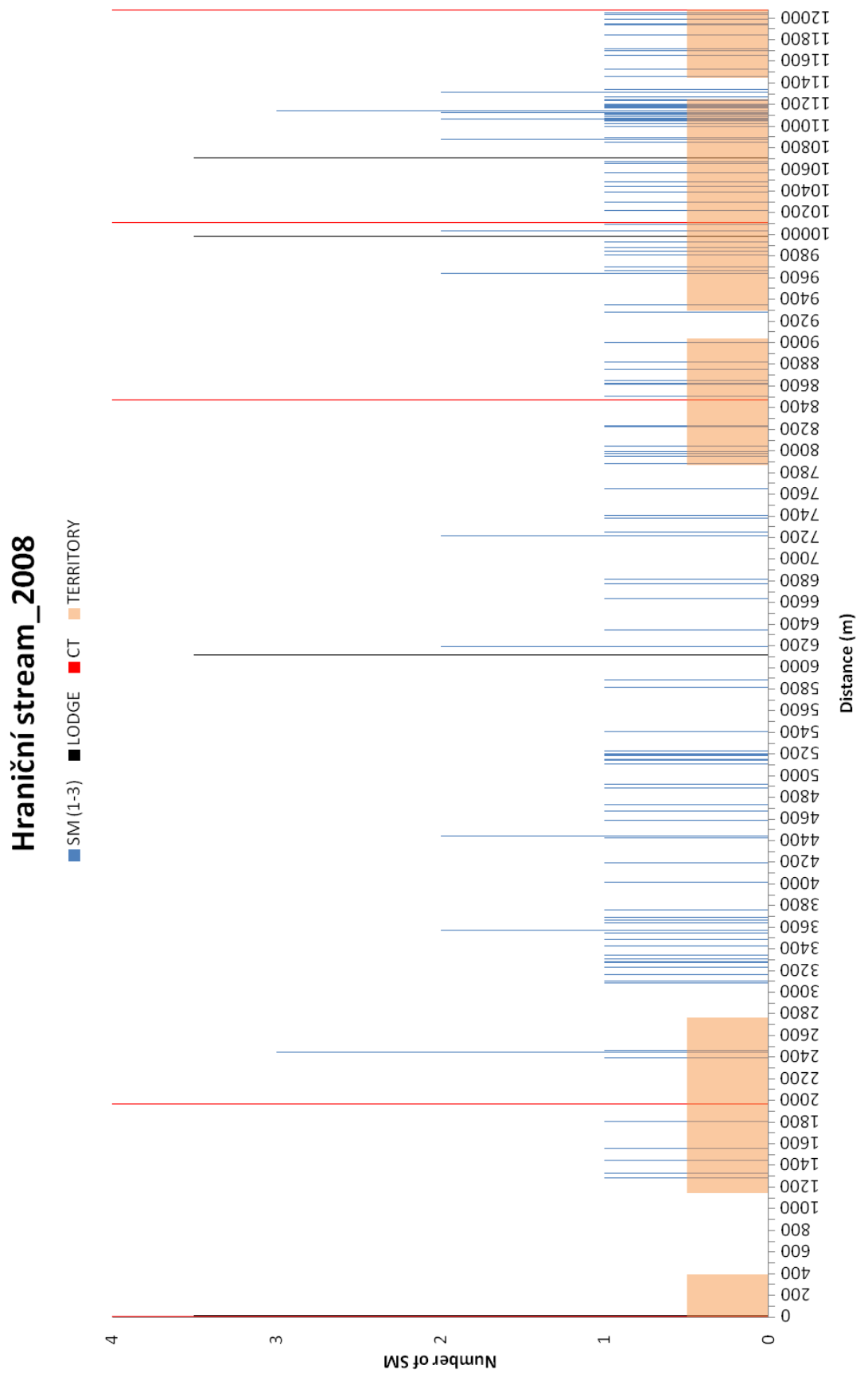


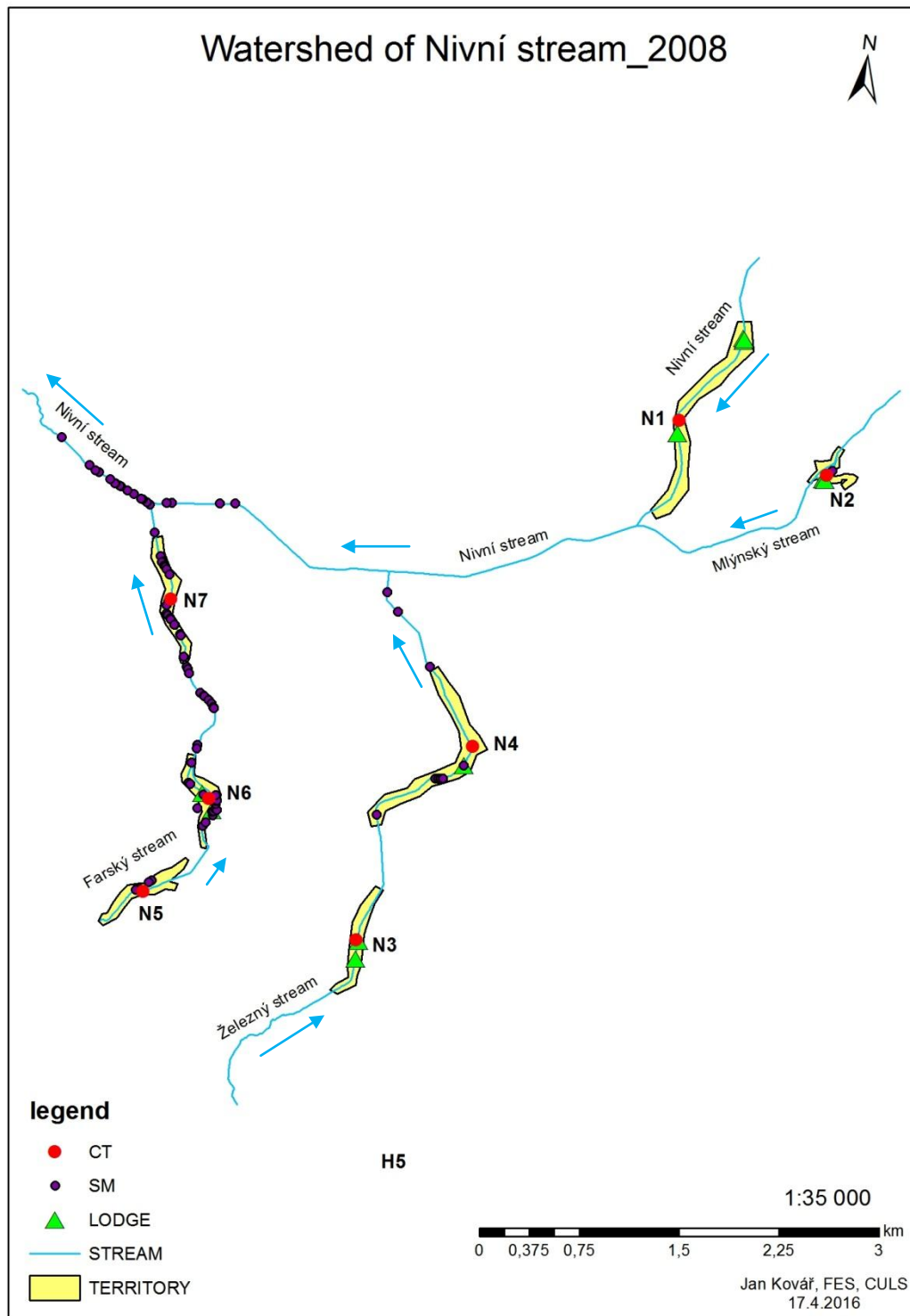
Supplement 1 – Vizualization of Hraniční stream (ArcMap)



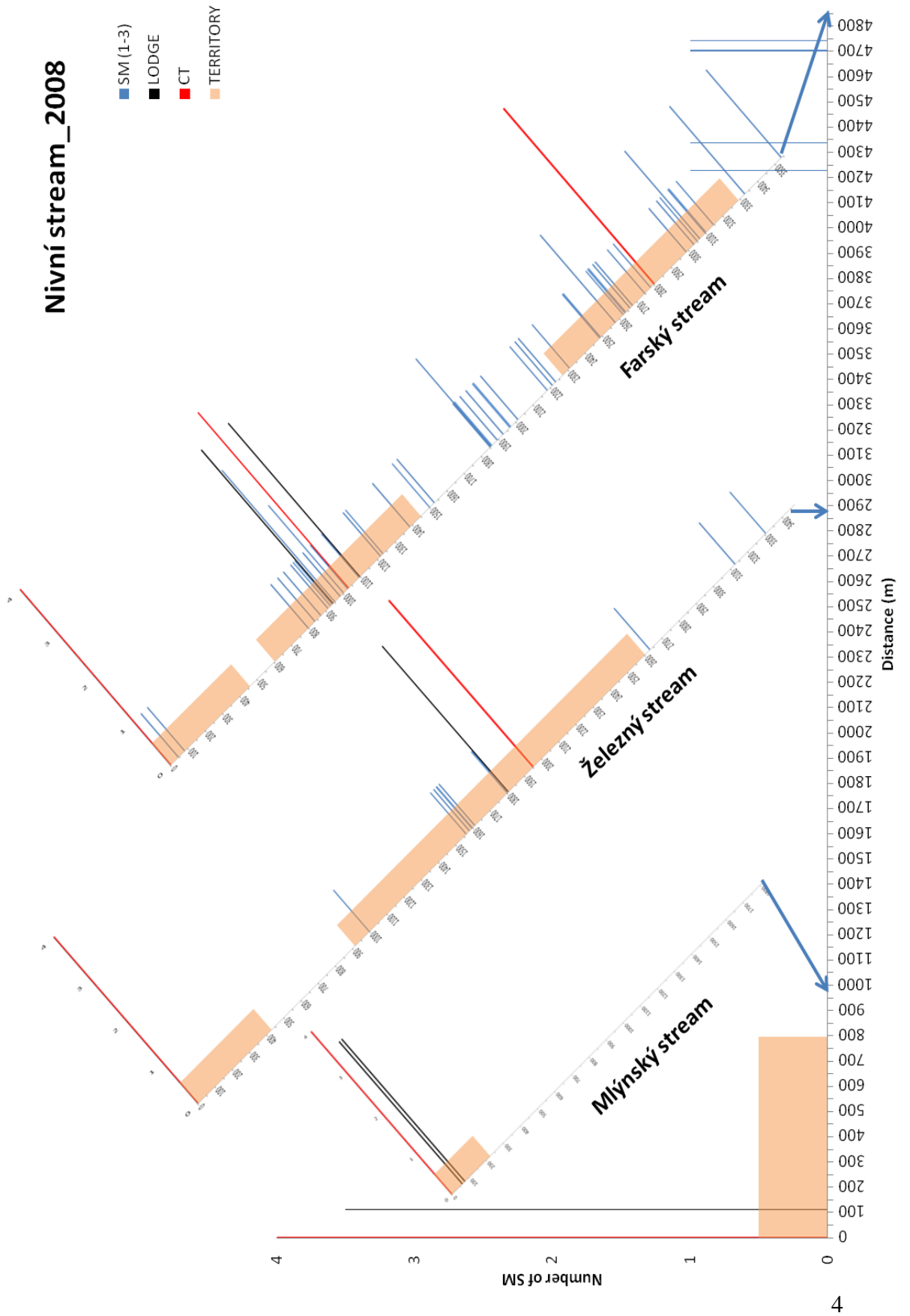
Supplement 2 – Vizualization of Hraniční stream (graph)



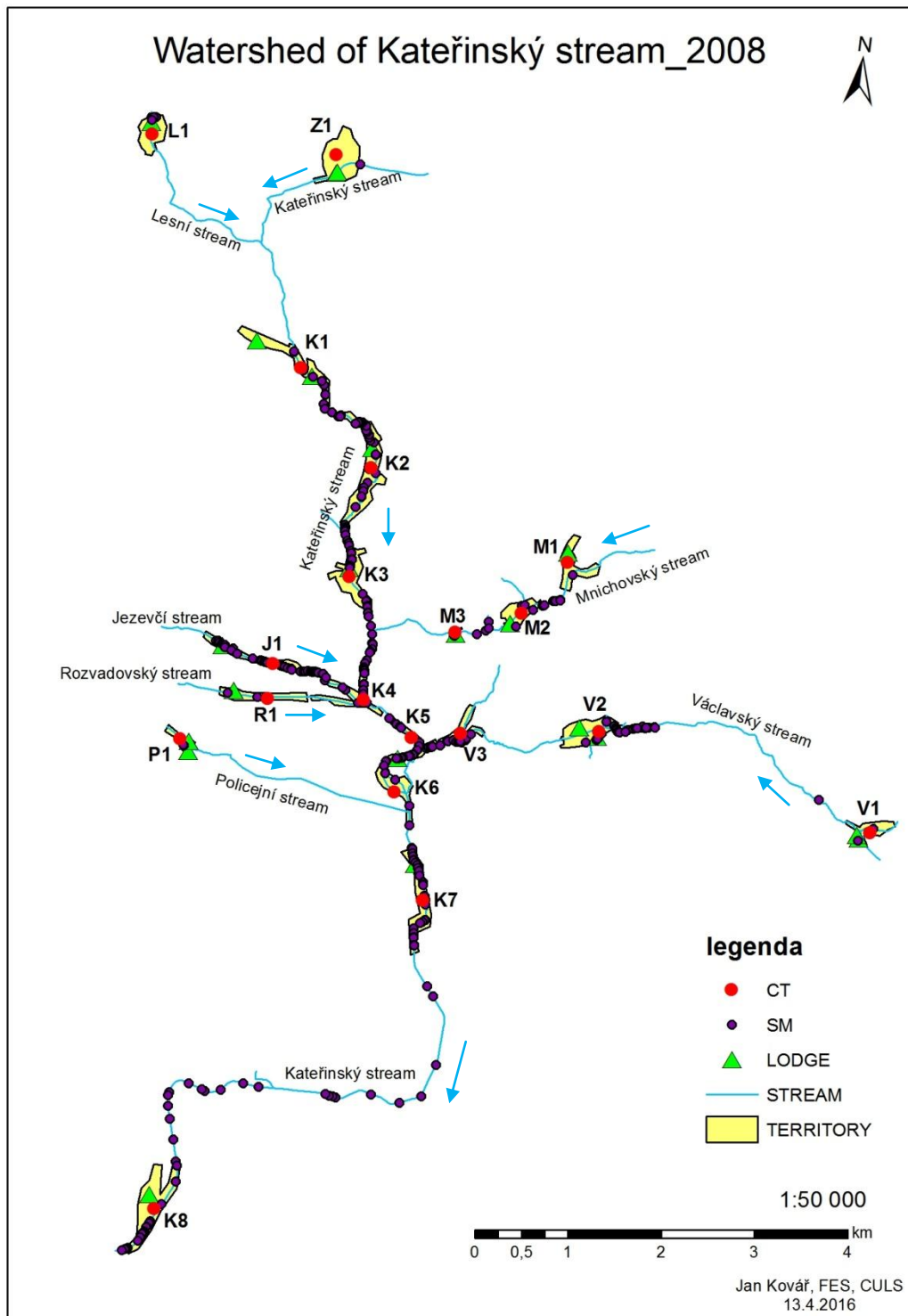
Supplement 3 – Vizualization of Nivní stream (ArcMap)



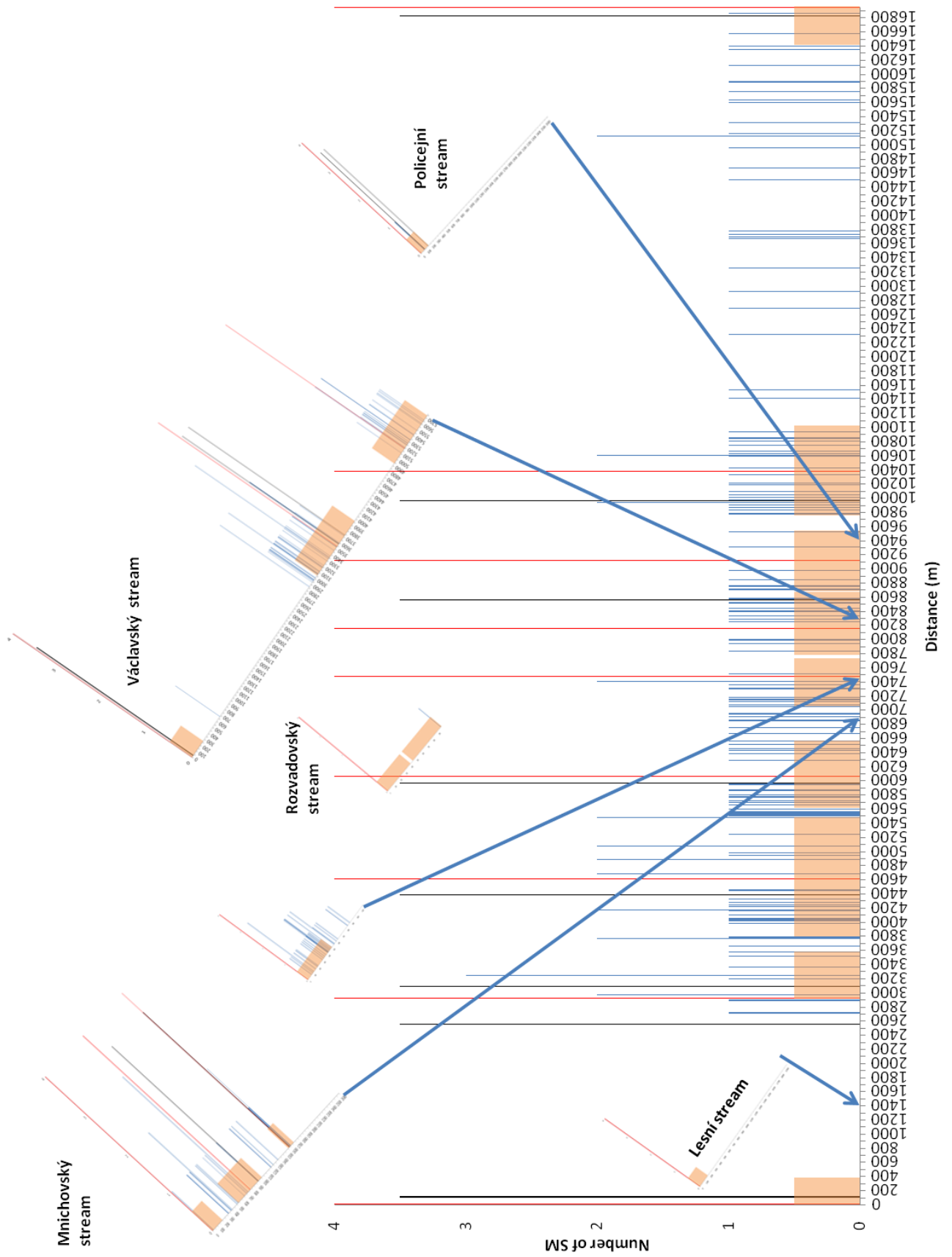
Supplement 4 – Vizualization of Nivní stream (graph)



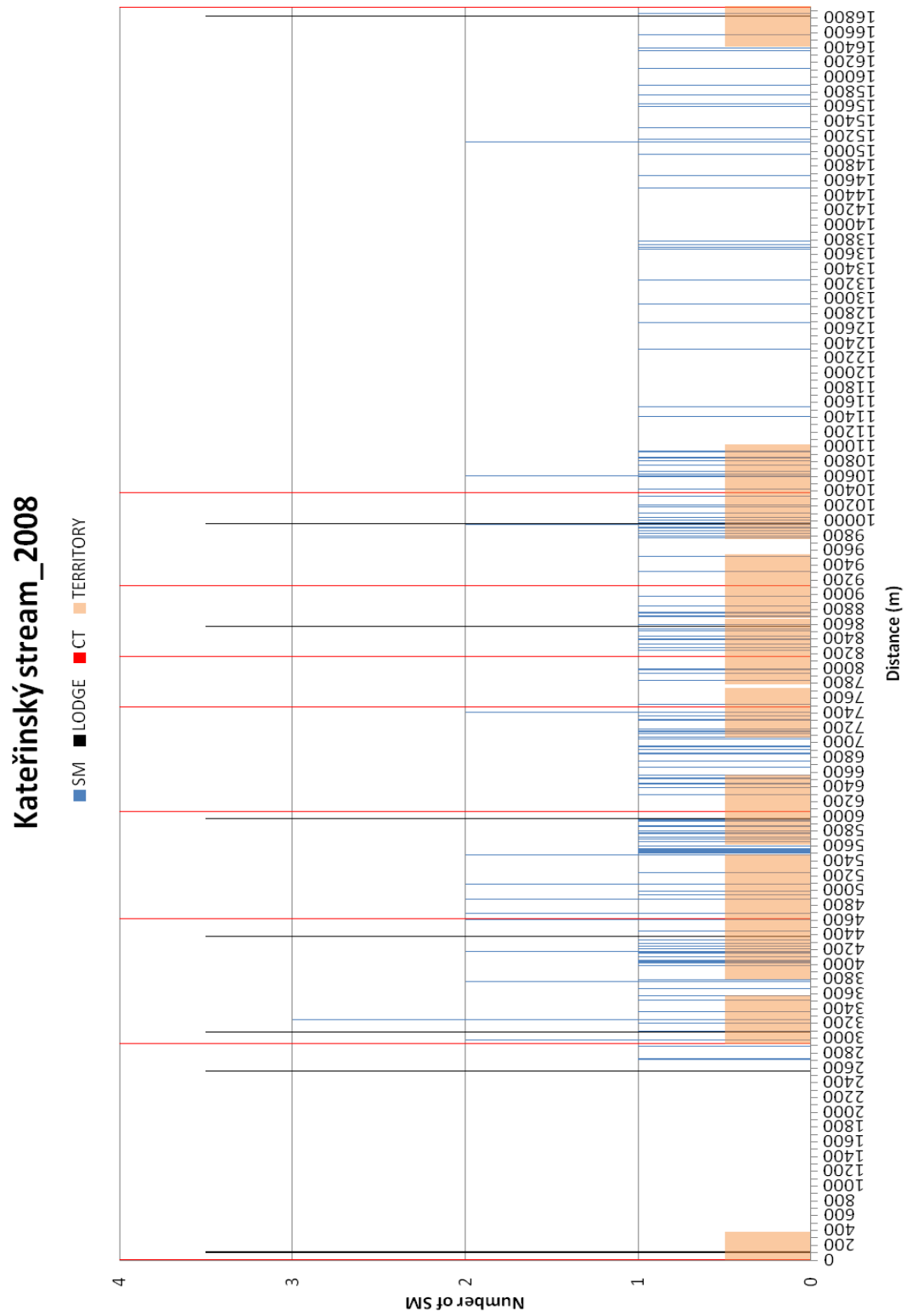
Supplement 5 – Vizualization of Kateřinský stream (ArcMap)



Supplement 6 – Vizualization of Kateřinský stream (graph)



Supplement 7 – Vizualization of Kateřinský stream without tributaries (graph)



Supplement 8 – Scent mound with fresh scent mark made of grass by the Kopanice stream, SCI Soutok-Podluží. Photo by Jan Kovář



Supplement 9 – Scent mound with fresh scent mark made of sand by the Elbe river, near Hřensko. Photo Jan Kovář





