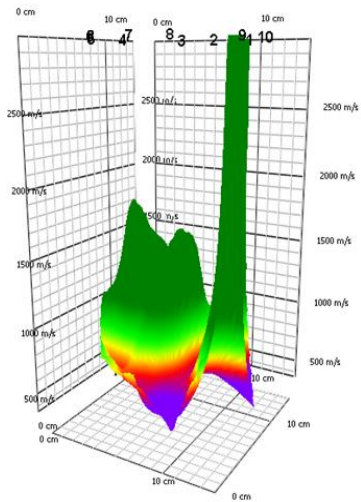
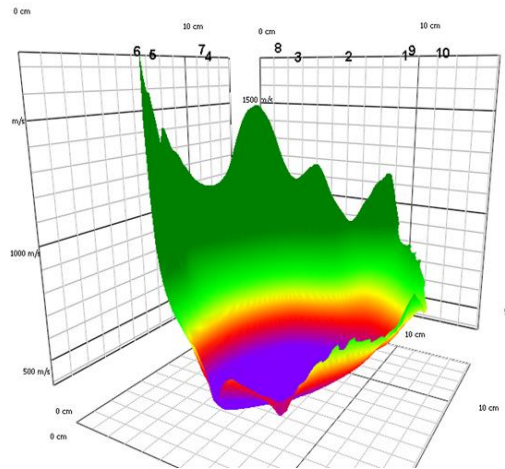


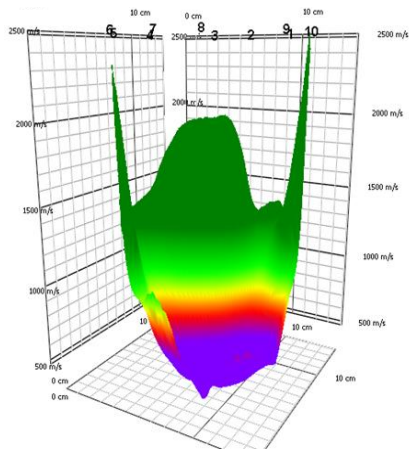
Příloha č. 1: 3D modely jednotlivých vrstev u všech tří vzorků a grafy jednotlivých vrstev mezi sondami z přístroje Arborsonic 3D



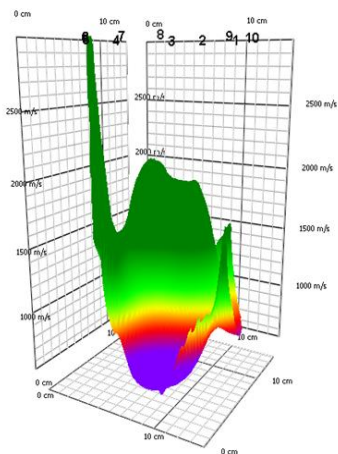
Vzorek 1, vrstva 1



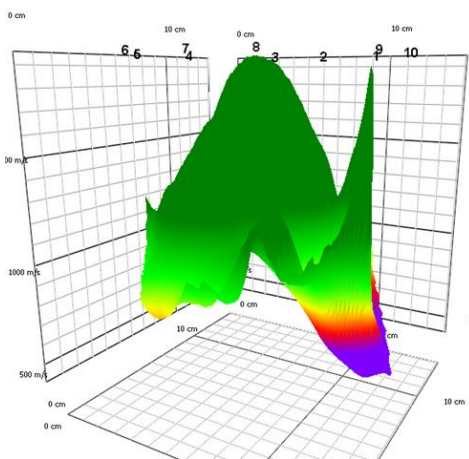
Vzorek 1, vrstva 2



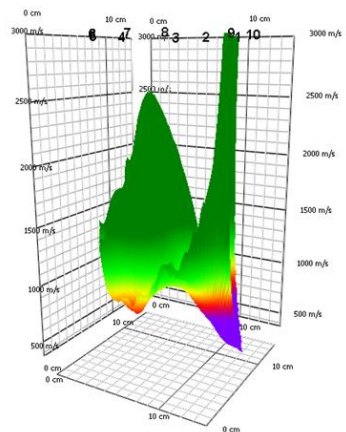
Vzorek 1, vrstva 3



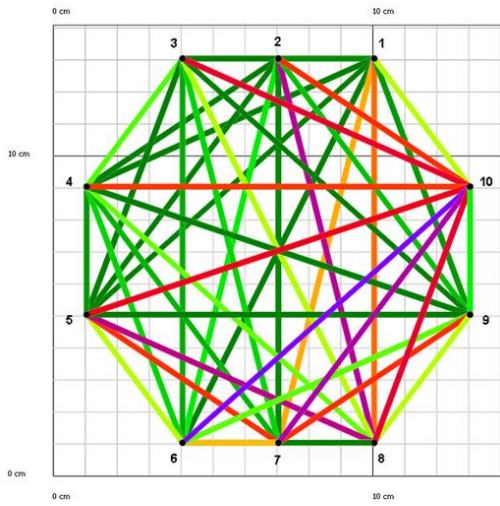
Vzorek 1, vrstva 4



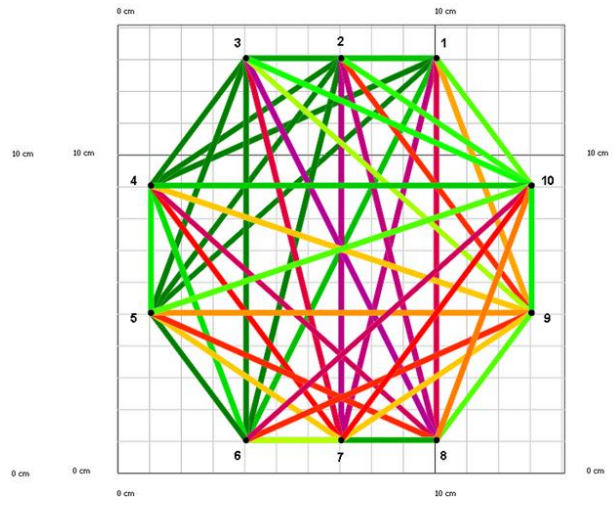
Vzorek 1, vrstva 5



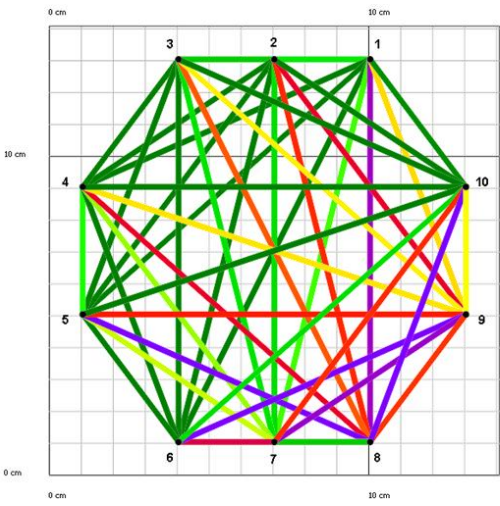
Vzorek 1, vrstva 6



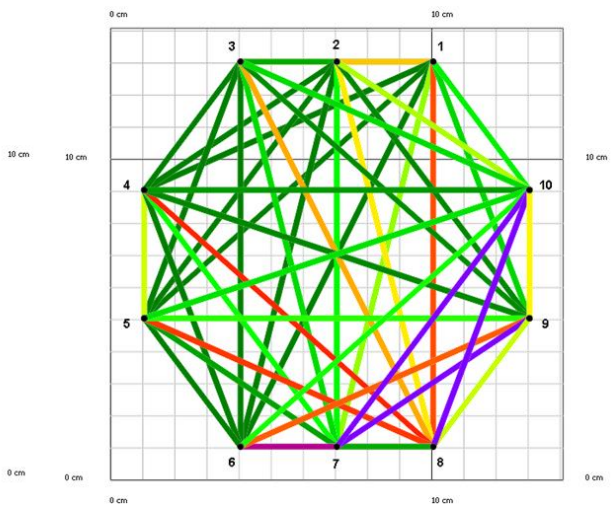
Vzorek 1, vrstva 1



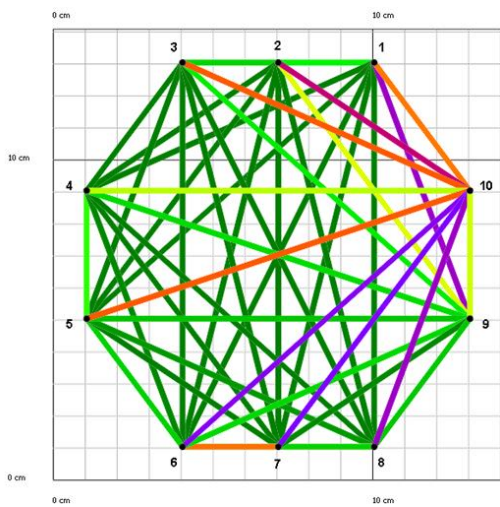
Vzorek 1, vrstva 2



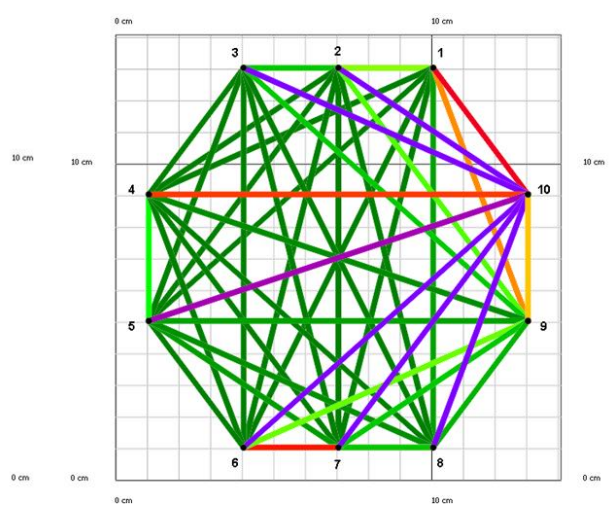
Vzorek 1, vrstva 3



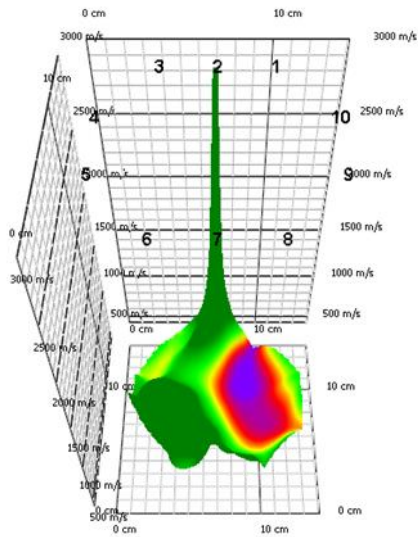
Vzorek 1, vrstva 4



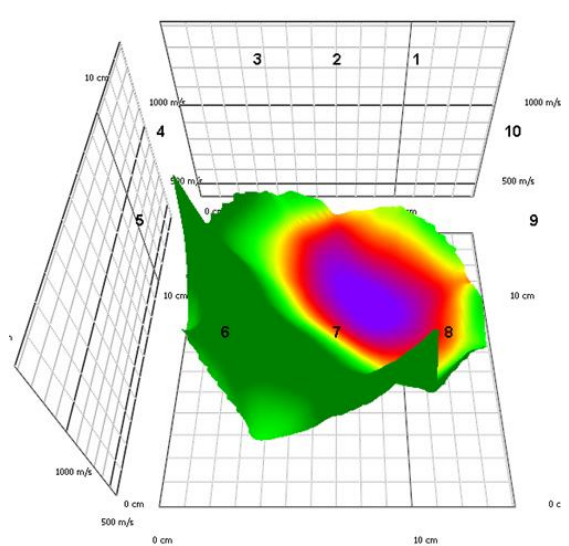
Vzorek 1, vrstva 5



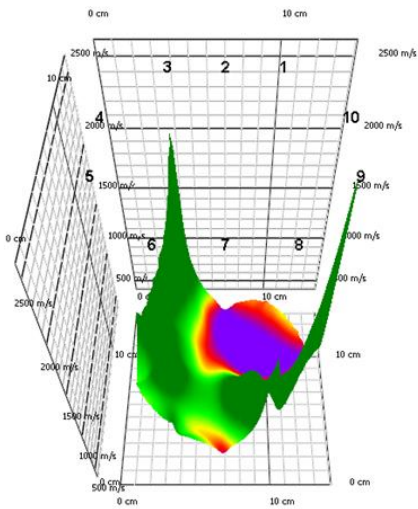
Vzorek 1, vrstva 6



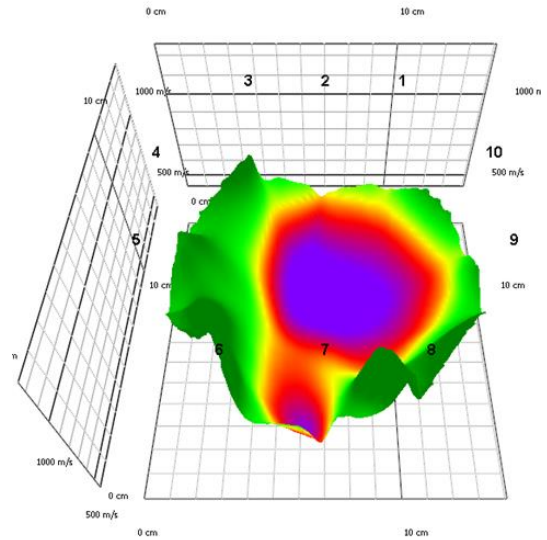
Vzorek 2, vrstva 1



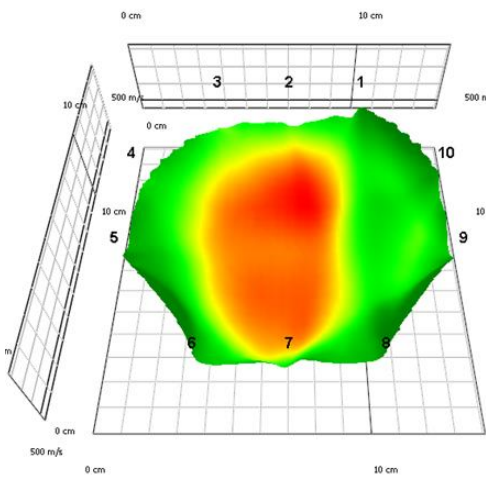
Vzorek 2, vrstva 2



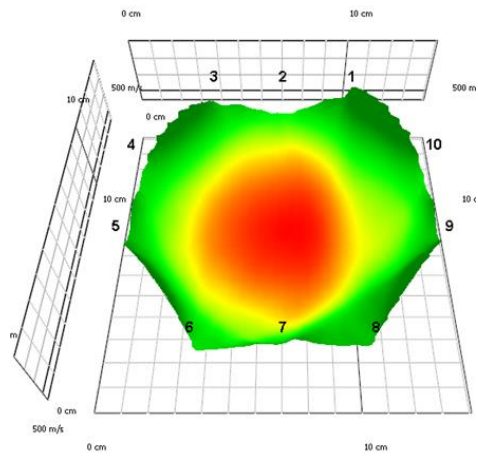
Vzorek 2, vrstva 3



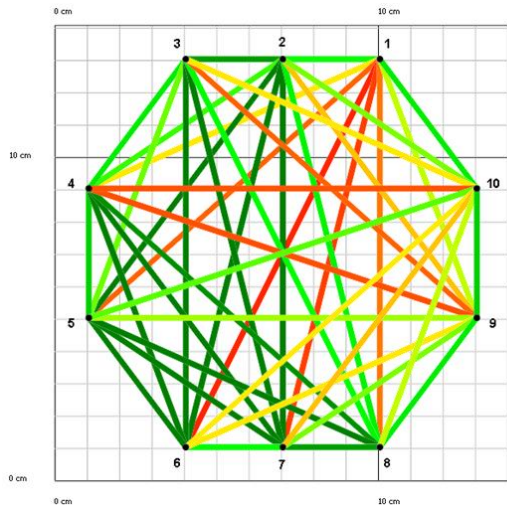
Vzorek 2, vrstva 4



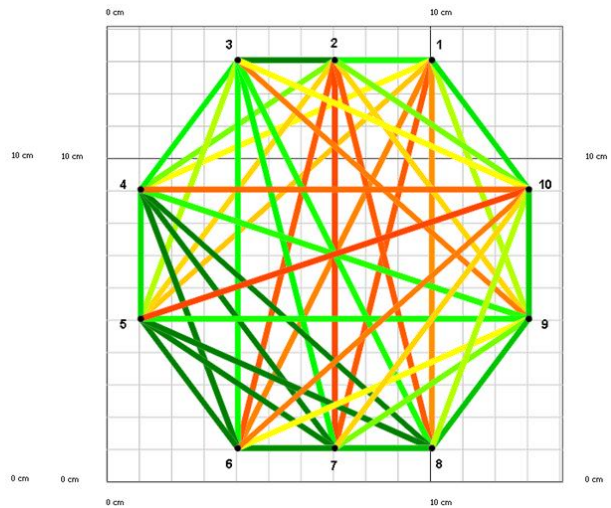
Vzorek 2, vrstva 5



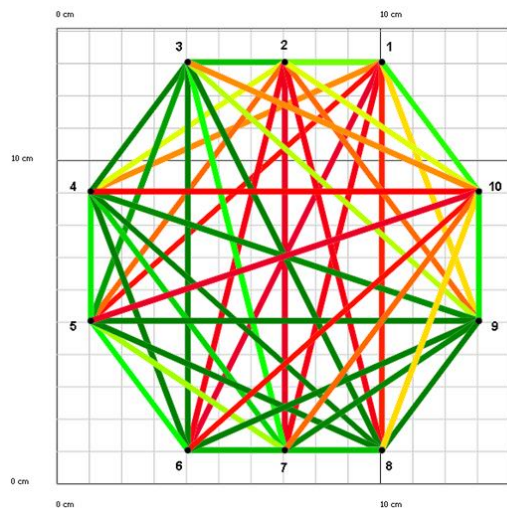
Vzorek 2, vrstva 6



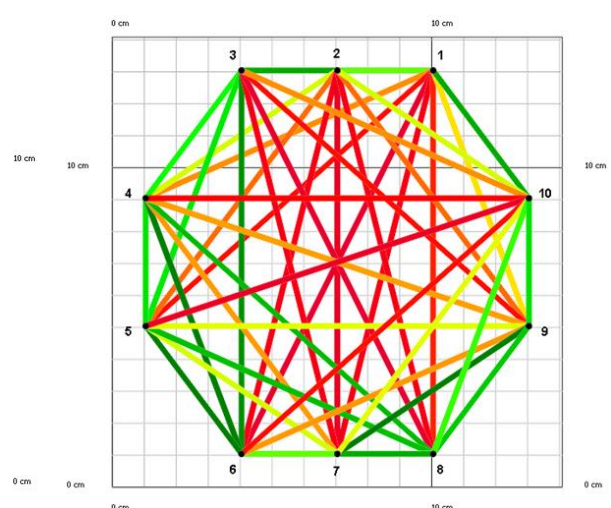
Vzorek 2, vrstva 1



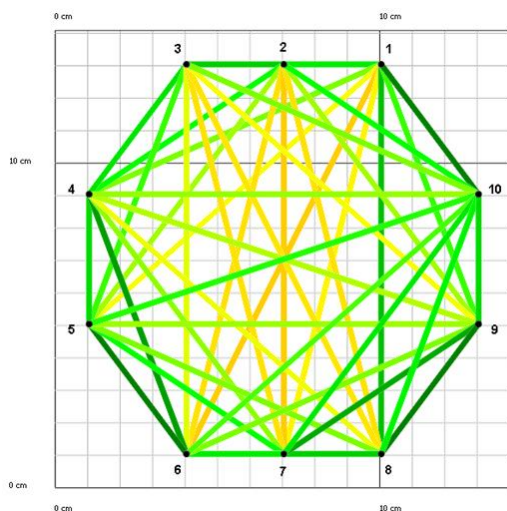
Vzorek 2, vrstva 2



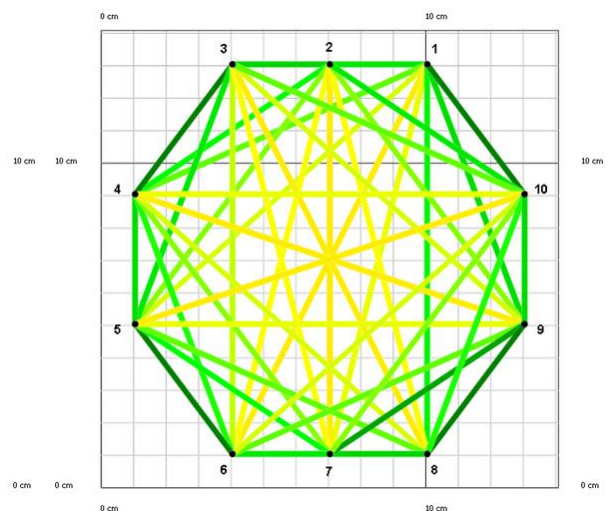
Vzorek 2, vrstva 3



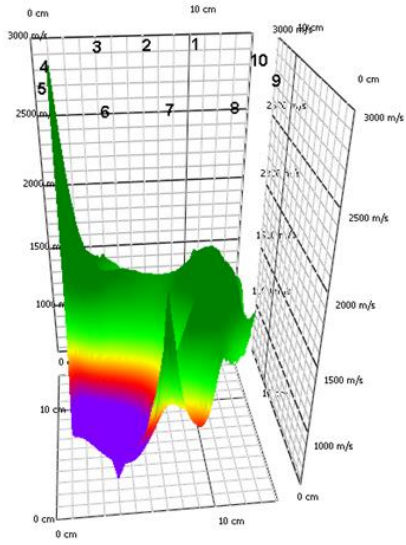
Vzorek 2, vrstva 4



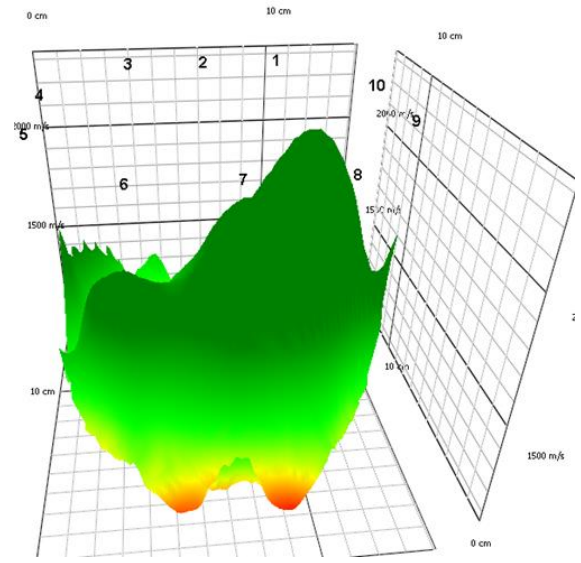
Vzorek 2, vrstva 5



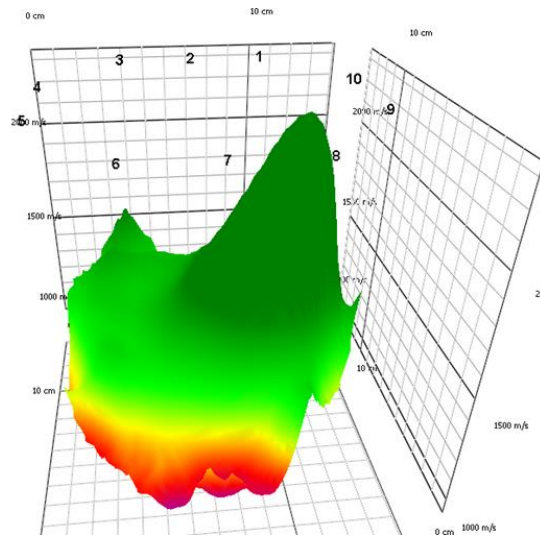
Vzorek 2, vrstva 6



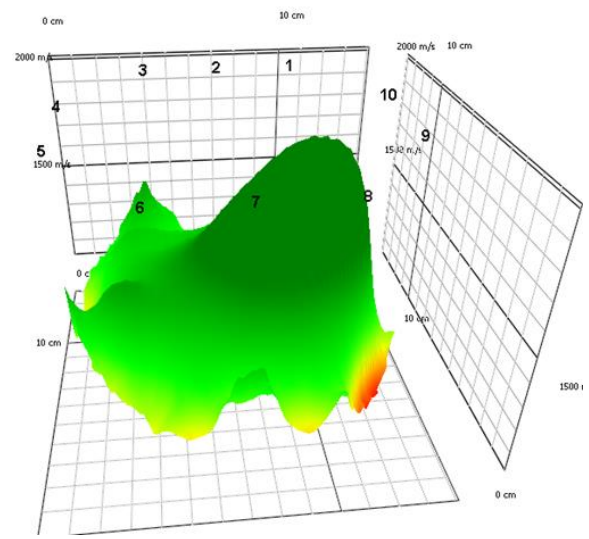
Vzorek 3, vrstva 1



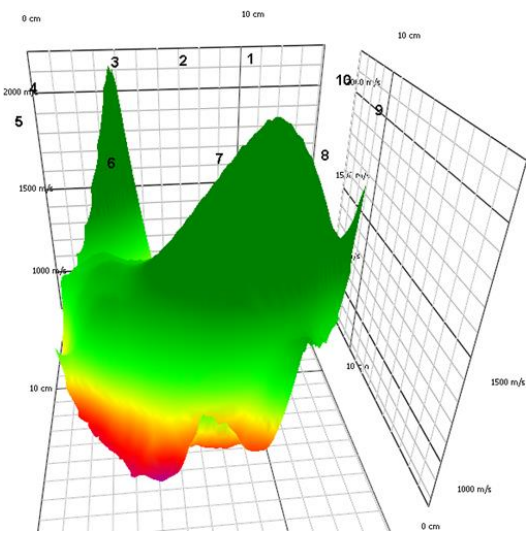
Vzorek 3, vrstva 2



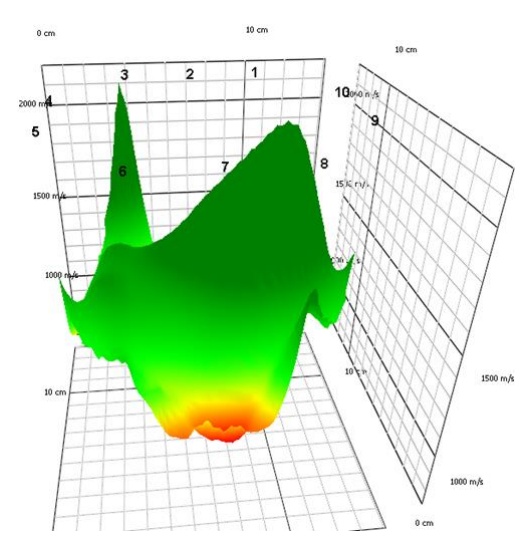
Vzorek 3, vrstva 3



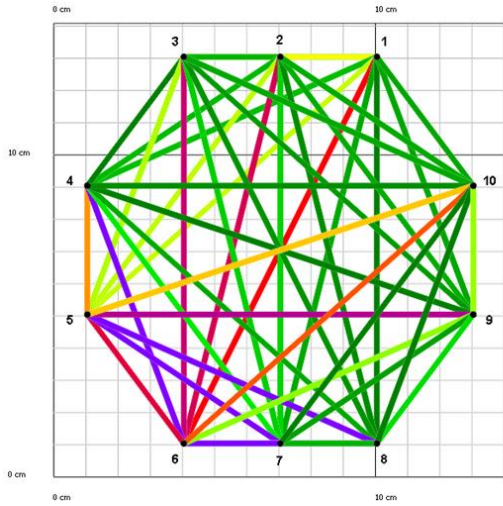
Vzorek 3, vrstva 4



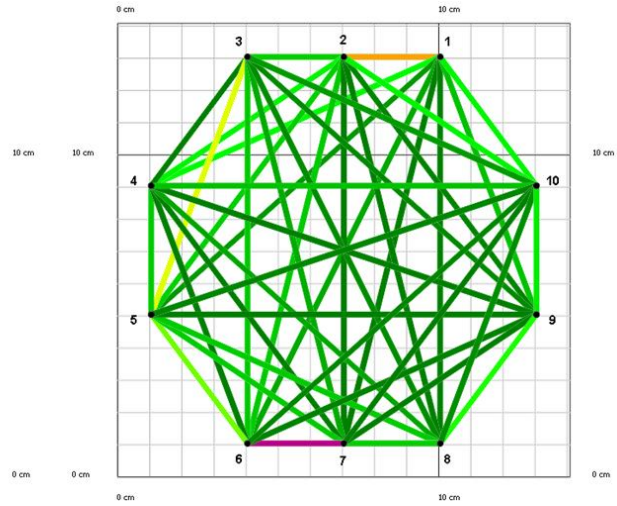
Vzorek 3, vrstva 5



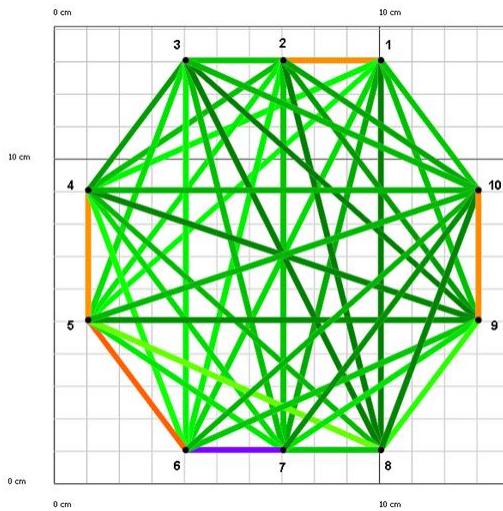
Vzorek 3, vrstva 6



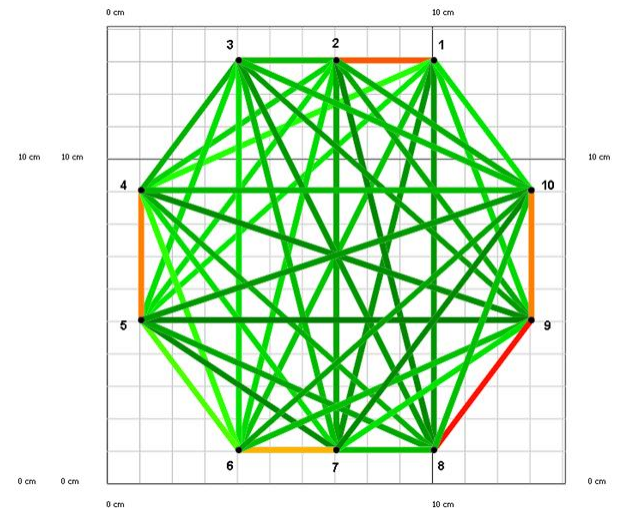
Vzorek 3, vrstva 1



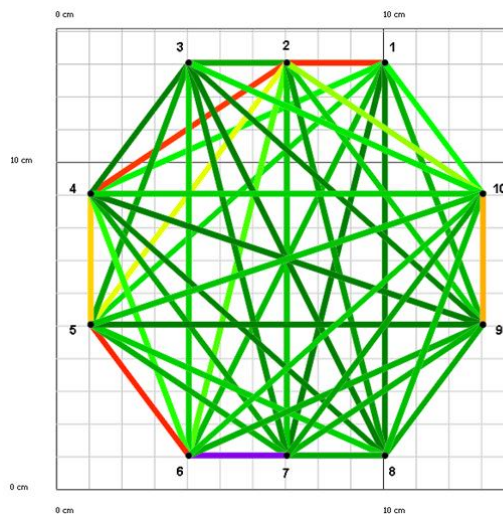
Vzorek 3, vrstva 2



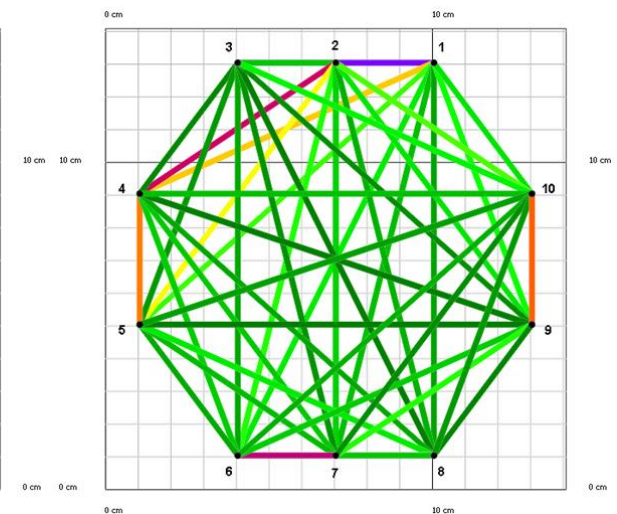
Vrstva 3, vrstva 3



Vzorek 3, vrstva 4



Vzorek 3, vrstva 5



Vzorek 3, vrstva 6

Příloha č. 2: Šíření zvuku v metrech za sekundu u jednotlivých vrstev u přístroje Arborsonic 3D

Šíření zvuku v prvním vzorku

| | | | | | | | | | | |
|-----------|----------|----------|----------|----------|----------|----------|----------|----------|----------|-----------|
| | 1 | 2 | 3 | 4 | 5 | 6 | 7 | 8 | 9 | 10 |
| 1 | m/s | 1119 | 1089 | 1432 | 1686 | 1283 | 761 | 733 | 1071 | 825 |
| 2 | 1119 | | 1119 | 1202 | 1292 | 931 | 1097 | 628 | 1007 | 708 |
| 3 | 1089 | 1119 | | 869 | 1270 | 1042 | 971 | 827 | 1400 | 671 |
| 4 | 1432 | 1202 | 869 | | 1074 | 972 | 1028 | 860 | 1617 | 712 |
| 5 | 1686 | 1292 | 1270 | 1074 | | 825 | 709 | 634 | 1359 | 678 |
| 6 | 1283 | 931 | 1042 | 972 | 825 | | 1119 | 767 | 864 | 580 |
| 7 | 761 | 1097 | 971 | 1028 | 709 | 1119 | | 1119 | 708 | 620 |
| 8 | 733 | 628 | 827 | 860 | 634 | 767 | 1119 | | 825 | 670 |
| 9 | 1071 | 1007 | 1400 | 1617 | 1359 | 864 | 708 | 825 | | 919 |
| 10 | 825 | 708 | 671 | 712 | 678 | 580 | 620 | 670 | 919 | |
| | 1 | 2 | 3 | 4 | 5 | 6 | 7 | 8 | 9 | 10 |
| 1 | m/s | 900 | 856 | 1270 | 1306 | 861 | 547 | 565 | 649 | 743 |
| 2 | 900 | | 900 | 1187 | 1331 | 992 | 543 | 547 | 607 | 758 |
| 3 | 856 | 900 | | 1090 | 1378 | 1008 | 569 | 538 | 712 | 767 |
| 4 | 1270 | 1187 | 1090 | | 798 | 818 | 593 | 559 | 662 | 844 |
| 5 | 1306 | 1331 | 1378 | 798 | | 970 | 662 | 605 | 643 | 744 |
| 6 | 861 | 992 | 1008 | 818 | 970 | | 900 | 706 | 605 | 559 |
| 7 | 547 | 543 | 569 | 593 | 662 | 900 | | 900 | 662 | 593 |
| 8 | 565 | 547 | 538 | 559 | 605 | 706 | 900 | | 743 | 634 |
| 9 | 649 | 607 | 712 | 662 | 643 | 605 | 662 | 743 | | 798 |
| 10 | 743 | 758 | 767 | 844 | 744 | 559 | 593 | 634 | 798 | |
| | 1 | 2 | 3 | 4 | 5 | 6 | 7 | 8 | 9 | 10 |
| 1 | m/s | 1165 | 1106 | 1602 | 1656 | 1391 | 1035 | 721 | 923 | 1289 |
| 2 | 1165 | | 1165 | 1512 | 1679 | 1492 | 1128 | 835 | 795 | 1313 |
| 3 | 1106 | 1165 | | 1410 | 1513 | 1467 | 1122 | 859 | 934 | 1391 |
| 4 | 1602 | 1512 | 1410 | | 1054 | 1373 | 991 | 796 | 928 | 1545 |
| 5 | 1656 | 1679 | 1513 | 1054 | | 1579 | 967 | 675 | 828 | 1450 |
| 6 | 1391 | 1492 | 1467 | 1373 | 1579 | | 1165 | 778 | 638 | 1131 |
| 7 | 1035 | 1128 | 1122 | 991 | 967 | 1165 | | 1165 | 716 | 836 |
| 8 | 721 | 835 | 859 | 796 | 675 | 778 | 1165 | | 840 | 681 |
| 9 | 923 | 795 | 934 | 928 | 828 | 638 | 716 | 840 | | 942 |
| 10 | 1289 | 1313 | 1391 | 1545 | 1450 | 1131 | 836 | 681 | 942 | |
| | 1 | 2 | 3 | 4 | 5 | 6 | 7 | 8 | 9 | 10 |
| 1 | m/s | 1357 | 1004 | 1595 | 1539 | 1558 | 1094 | 938 | 1262 | 1207 |
| 2 | 1357 | | 1357 | 1507 | 1595 | 1694 | 1183 | 1025 | 1432 | 1079 |
| 3 | 1004 | 1357 | | 1478 | 1485 | 1717 | 1251 | 990 | 1419 | 1249 |
| 4 | 1595 | 1507 | 1478 | | 1062 | 1598 | 1169 | 917 | 1430 | 1396 |
| 5 | 1539 | 1595 | 1485 | 1062 | | 1767 | 1374 | 927 | 1152 | 1235 |
| 6 | 1558 | 1694 | 1717 | 1598 | 1767 | | 1357 | 818 | 948 | 1163 |
| 7 | 1094 | 1183 | 1251 | 1169 | 1374 | 1357 | | 1357 | 745 | 747 |
| 8 | 938 | 1025 | 990 | 917 | 927 | 818 | 1357 | | 1065 | 698 |
| 9 | 1262 | 1432 | 1419 | 1430 | 1152 | 948 | 745 | 1065 | | 1032 |
| 10 | 1207 | 1079 | 1249 | 1396 | 1235 | 1163 | 747 | 698 | 1032 | |

| | | | | | | | | | | |
|-----------|------------|----------|----------|----------|----------|----------|----------|----------|----------|-----------|
| | 1 | 2 | 3 | 4 | 5 | 6 | 7 | 8 | 9 | 10 |
| 1 | m/s | 1061 | 1001 | 1455 | 1450 | 1296 | 1281 | 1219 | 662 | 805 |
| 2 | 1061 | | 1061 | 1349 | 1449 | 1364 | 1384 | 1354 | 881 | 697 |
| 3 | 1001 | 1061 | | 1263 | 1383 | 1389 | 1447 | 1442 | 1016 | 791 |
| 4 | 1455 | 1349 | 1263 | | 962 | 1196 | 1287 | 1318 | 1048 | 898 |
| 5 | 1450 | 1449 | 1383 | 962 | | 1066 | 1248 | 1166 | 1086 | 791 |
| 6 | 1296 | 1364 | 1389 | 1196 | 1066 | | 1061 | 801 | 1051 | 642 |
| 7 | 1281 | 1384 | 1447 | 1287 | 1248 | 1061 | | 1061 | 1194 | 614 |
| 8 | 1219 | 1354 | 1442 | 1318 | 1166 | 801 | 1061 | | 1082 | 662 |
| 9 | 662 | 881 | 1016 | 1048 | 1086 | 1051 | 1194 | 1082 | | 889 |
| 10 | 805 | 697 | 791 | 898 | 791 | 642 | 614 | 662 | 889 | |
| | 1 | 2 | 3 | 4 | 5 | 6 | 7 | 8 | 9 | 10 |
| 1 | m/s | 1291 | 1096 | 1847 | 1723 | 1660 | 1497 | 1374 | 971 | 878 |
| 2 | 1291 | | 1291 | 1602 | 1626 | 1674 | 1522 | 1445 | 1128 | 736 |
| 3 | 1096 | 1291 | | 1476 | 1564 | 1740 | 1596 | 1539 | 1285 | 656 |
| 4 | 1847 | 1602 | 1476 | | 1180 | 1590 | 1515 | 1522 | 1419 | 926 |
| 5 | 1723 | 1626 | 1564 | 1180 | | 1464 | 1384 | 1411 | 1371 | 798 |
| 6 | 1660 | 1674 | 1740 | 1590 | 1464 | | 1291 | 906 | 1114 | 735 |
| 7 | 1497 | 1522 | 1596 | 1515 | 1384 | 1291 | | 1291 | 1287 | 636 |
| 8 | 1374 | 1445 | 1539 | 1522 | 1411 | 906 | 1291 | | 1335 | 703 |
| 9 | 971 | 1128 | 1285 | 1419 | 1371 | 1114 | 1287 | 1335 | | 1002 |
| 10 | 878 | 736 | 656 | 926 | 798 | 735 | 636 | 703 | 1002 | |

Šíření zvuku ve druhém vzorku

| | | | | | | | | | | |
|-----------|------------|----------|----------|----------|----------|----------|----------|----------|----------|-----------|
| | 1 | 2 | 3 | 4 | 5 | 6 | 7 | 8 | 9 | 10 |
| 1 | m/s | 797 | 671 | 587 | 546 | 527 | 535 | 552 | 613 | 698 |
| 2 | 797 | | 797 | 656 | 976 | 1101 | 1013 | 689 | 576 | 636 |
| 3 | 671 | 797 | | 698 | 640 | 849 | 839 | 678 | 546 | 587 |
| 4 | 587 | 656 | 698 | | 734 | 983 | 1066 | 810 | 540 | 541 |
| 5 | 546 | 976 | 640 | 734 | | 968 | 1116 | 905 | 623 | 646 |
| 6 | 527 | 1101 | 849 | 983 | 968 | | 797 | 676 | 587 | 588 |
| 7 | 535 | 1013 | 839 | 1066 | 1116 | 797 | | 797 | 636 | 576 |
| 8 | 552 | 689 | 678 | 810 | 905 | 676 | 797 | | 698 | 613 |
| 9 | 613 | 576 | 546 | 540 | 623 | 587 | 636 | 698 | | 734 |
| 10 | 698 | 636 | 587 | 541 | 646 | 588 | 576 | 613 | 734 | |
| | 1 | 2 | 3 | 4 | 5 | 6 | 7 | 8 | 9 | 10 |
| 1 | m/s | 731 | 646 | 574 | 558 | 538 | 525 | 542 | 597 | 682 |
| 2 | 731 | | 1059 | 616 | 563 | 525 | 520 | 525 | 563 | 616 |
| 3 | 646 | 1059 | | 665 | 597 | 651 | 661 | 645 | 536 | 574 |
| 4 | 574 | 616 | 665 | | 691 | 1076 | 1202 | 1219 | 641 | 531 |
| 5 | 558 | 563 | 597 | 691 | | 881 | 1003 | 1121 | 645 | 519 |
| 6 | 538 | 525 | 651 | 1076 | 881 | | 731 | 790 | 574 | 536 |
| 7 | 525 | 520 | 661 | 1202 | 1003 | 731 | | 731 | 616 | 563 |
| 8 | 542 | 525 | 645 | 1219 | 1121 | 790 | 731 | | 722 | 597 |
| 9 | 597 | 563 | 536 | 641 | 645 | 574 | 616 | 722 | | 711 |
| 10 | 682 | 616 | 574 | 531 | 519 | 536 | 563 | 597 | 711 | |

| | 1 | 2 | 3 | 4 | 5 | 6 | 7 | 8 | 9 | 10 |
|----|-----|-----|-----|------|------|-----|-----|------|-----|-----|
| 1 | m/s | 793 | 669 | 587 | 545 | 526 | 534 | 551 | 612 | 695 |
| 2 | 793 | | 793 | 634 | 575 | 534 | 529 | 534 | 575 | 634 |
| 3 | 669 | 793 | | 937 | 831 | 979 | 704 | 873 | 647 | 587 |
| 4 | 587 | 634 | 937 | | 731 | 955 | 764 | 1100 | 859 | 540 |
| 5 | 545 | 575 | 831 | 731 | | 715 | 654 | 1118 | 989 | 528 |
| 6 | 526 | 534 | 979 | 955 | 715 | | 793 | 802 | 893 | 545 |
| 7 | 534 | 529 | 704 | 764 | 654 | 793 | | 793 | 865 | 575 |
| 8 | 551 | 534 | 873 | 1100 | 1118 | 802 | 793 | | 897 | 612 |
| 9 | 612 | 575 | 647 | 859 | 989 | 893 | 865 | 897 | | 731 |
| 10 | 695 | 634 | 587 | 540 | 528 | 545 | 575 | 612 | 731 | |

| | 1 | 2 | 3 | 4 | 5 | 6 | 7 | 8 | 9 | 10 |
|----|-----|-----|-----|-----|-----|-----|-----|-----|-----|-----|
| 1 | m/s | 822 | 680 | 592 | 549 | 530 | 538 | 555 | 619 | 823 |
| 2 | 822 | | 822 | 642 | 580 | 538 | 533 | 538 | 580 | 642 |
| 3 | 680 | 822 | | 709 | 740 | 860 | 538 | 530 | 549 | 592 |
| 4 | 592 | 642 | 709 | | 750 | 993 | 596 | 802 | 597 | 544 |
| 5 | 549 | 580 | 740 | 750 | | 952 | 642 | 796 | 637 | 532 |
| 6 | 530 | 538 | 860 | 993 | 952 | | 822 | 680 | 595 | 549 |
| 7 | 538 | 533 | 538 | 596 | 642 | 822 | | 822 | 900 | 638 |
| 8 | 555 | 538 | 530 | 802 | 796 | 680 | 822 | | 783 | 695 |
| 9 | 619 | 580 | 549 | 597 | 637 | 595 | 900 | 783 | | 750 |
| 10 | 823 | 642 | 592 | 544 | 532 | 549 | 638 | 695 | 750 | |

| | 1 | 2 | 3 | 4 | 5 | 6 | 7 | 8 | 9 | 10 |
|----|-----|-----|-----|-----|-----|-----|-----|-----|-----|-----|
| 1 | m/s | 640 | 606 | 553 | 520 | 504 | 515 | 656 | 572 | 723 |
| 2 | 640 | | 640 | 584 | 543 | 510 | 505 | 510 | 543 | 584 |
| 3 | 606 | 640 | | 616 | 572 | 526 | 510 | 511 | 520 | 553 |
| 4 | 553 | 584 | 616 | | 627 | 691 | 548 | 522 | 538 | 546 |
| 5 | 520 | 543 | 572 | 627 | | 774 | 584 | 553 | 544 | 577 |
| 6 | 504 | 510 | 526 | 691 | 774 | | 640 | 606 | 553 | 567 |
| 7 | 515 | 505 | 510 | 548 | 584 | 640 | | 640 | 678 | 609 |
| 8 | 656 | 510 | 511 | 522 | 553 | 606 | 640 | | 806 | 596 |
| 9 | 572 | 543 | 520 | 538 | 544 | 553 | 678 | 806 | | 627 |
| 10 | 723 | 584 | 553 | 546 | 577 | 567 | 609 | 596 | 627 | |

| | 1 | 2 | 3 | 4 | 5 | 6 | 7 | 8 | 9 | 10 |
|----|-----|-----|-----|-----|-----|-----|-----|-----|-----|-----|
| 1 | m/s | 617 | 595 | 547 | 515 | 500 | 510 | 583 | 608 | 795 |
| 2 | 617 | | 617 | 576 | 537 | 505 | 500 | 505 | 537 | 596 |
| 3 | 595 | 617 | | 766 | 596 | 521 | 505 | 500 | 515 | 547 |
| 4 | 547 | 576 | 766 | | 610 | 564 | 537 | 515 | 500 | 510 |
| 5 | 515 | 537 | 596 | 610 | | 735 | 576 | 547 | 510 | 500 |
| 6 | 500 | 505 | 521 | 564 | 735 | | 617 | 595 | 547 | 515 |
| 7 | 510 | 500 | 505 | 537 | 576 | 617 | | 617 | 666 | 537 |
| 8 | 583 | 505 | 500 | 515 | 547 | 595 | 617 | | 718 | 564 |
| 9 | 608 | 537 | 515 | 500 | 510 | 547 | 666 | 718 | | 610 |
| 10 | 795 | 596 | 547 | 510 | 500 | 515 | 537 | 564 | 610 | |

Šíření zvuku ve třetím vzorku

| | 1 | 2 | 3 | 4 | 5 | 6 | 7 | 8 | 9 | 10 |
|----|------|------|------|------|------|------|------|------|------|------|
| 1 | m/s | 1480 | 1155 | 1456 | 1183 | 991 | 1509 | 1656 | 1515 | 1514 |
| 2 | 1480 | | 1480 | 1470 | 1187 | 946 | 1404 | 1577 | 1500 | 1505 |
| 3 | 1155 | 1480 | | 1622 | 1196 | 928 | 1418 | 1560 | 1544 | 1507 |
| 4 | 1456 | 1470 | 1622 | | 1084 | 844 | 1353 | 1507 | 1608 | 1573 |
| 5 | 1183 | 1187 | 1196 | 1084 | | 960 | 767 | 729 | 908 | 1116 |
| 6 | 991 | 946 | 928 | 844 | 960 | | 1480 | 840 | 1217 | 1045 |
| 7 | 1509 | 1404 | 1418 | 1353 | 767 | 1480 | | 1480 | 1528 | 1630 |
| 8 | 1656 | 1577 | 1560 | 1507 | 729 | 840 | 1480 | | 1386 | 1663 |
| 9 | 1515 | 1500 | 1544 | 1608 | 908 | 1217 | 1528 | 1386 | | 1209 |
| 10 | 1514 | 1505 | 1507 | 1573 | 1116 | 1045 | 1630 | 1663 | 1209 | |

| | 1 | 2 | 3 | 4 | 5 | 6 | 7 | 8 | 9 | 10 |
|----|------|------|------|------|------|------|------|------|------|------|
| 1 | m/s | 1480 | 1143 | 1372 | 1618 | 1582 | 1777 | 1728 | 1519 | 1386 |
| 2 | 1480 | | 1480 | 1388 | 1484 | 1494 | 1714 | 1736 | 1668 | 1388 |
| 3 | 1143 | 1480 | | 1791 | 1221 | 1500 | 1572 | 1646 | 1654 | 1612 |
| 4 | 1372 | 1388 | 1791 | | 1493 | 1722 | 1686 | 1584 | 1694 | 1515 |
| 5 | 1618 | 1484 | 1221 | 1493 | | 1292 | 1492 | 1489 | 1801 | 1664 |
| 6 | 1582 | 1494 | 1500 | 1722 | 1292 | | 1480 | 955 | 1675 | 1661 |
| 7 | 1777 | 1714 | 1572 | 1686 | 1492 | 1480 | | 1480 | 1695 | 1835 |
| 8 | 1728 | 1736 | 1646 | 1584 | 1489 | 955 | 1480 | | 1345 | 1644 |
| 9 | 1519 | 1668 | 1654 | 1694 | 1801 | 1675 | 1695 | 1345 | | 1407 |
| 10 | 1386 | 1388 | 1612 | 1515 | 1664 | 1661 | 1835 | 1644 | 1407 | |

| | 1 | 2 | 3 | 4 | 5 | 6 | 7 | 8 | 9 | 10 |
|----|------|------|------|------|------|------|------|------|------|------|
| 1 | m/s | 1480 | 1118 | 1368 | 1364 | 1437 | 1553 | 1705 | 1507 | 1489 |
| 2 | 1480 | | 1480 | 1501 | 1397 | 1379 | 1488 | 1693 | 1594 | 1567 |
| 3 | 1118 | 1480 | | 1594 | 1422 | 1381 | 1503 | 1695 | 1692 | 1521 |
| 4 | 1368 | 1501 | 1594 | | 1121 | 1336 | 1438 | 1521 | 1650 | 1537 |
| 5 | 1364 | 1397 | 1422 | 1121 | | 1090 | 1407 | 1283 | 1625 | 1524 |
| 6 | 1437 | 1379 | 1381 | 1336 | 1090 | | 1480 | 844 | 1483 | 1531 |
| 7 | 1553 | 1488 | 1503 | 1438 | 1407 | 1480 | | 1480 | 1420 | 1618 |
| 8 | 1705 | 1693 | 1695 | 1521 | 1283 | 844 | 1480 | | 1320 | 1649 |
| 9 | 1507 | 1594 | 1692 | 1650 | 1625 | 1483 | 1420 | 1320 | | 1117 |
| 10 | 1489 | 1567 | 1521 | 1537 | 1524 | 1531 | 1618 | 1649 | 1117 | |

| | 1 | 2 | 3 | 4 | 5 | 6 | 7 | 8 | 9 | 10 |
|----|------|------|------|------|------|------|------|------|------|------|
| 1 | m/s | 1480 | 1058 | 1295 | 1373 | 1458 | 1576 | 1577 | 1411 | 1386 |
| 2 | 1480 | | 1480 | 1420 | 1391 | 1405 | 1529 | 1606 | 1526 | 1510 |
| 3 | 1058 | 1480 | | 1507 | 1394 | 1394 | 1479 | 1566 | 1557 | 1473 |
| 4 | 1295 | 1420 | 1507 | | 1084 | 1289 | 1403 | 1511 | 1591 | 1487 |
| 5 | 1373 | 1391 | 1394 | 1084 | | 1269 | 1602 | 1532 | 1662 | 1562 |
| 6 | 1458 | 1405 | 1394 | 1289 | 1269 | | 1480 | 1115 | 1469 | 1535 |
| 7 | 1576 | 1529 | 1479 | 1403 | 1602 | 1480 | | 1480 | 1388 | 1602 |
| 8 | 1577 | 1606 | 1566 | 1511 | 1532 | 1115 | 1480 | | 1016 | 1471 |
| 9 | 1411 | 1526 | 1557 | 1591 | 1662 | 1469 | 1388 | 1016 | | 1084 |
| 10 | 1386 | 1510 | 1473 | 1487 | 1562 | 1535 | 1602 | 1471 | 1084 | |

| | | | | | | | | | | |
|-----------|------------|----------|----------|----------|----------|----------|----------|----------|----------|-----------|
| | 1 | 2 | 3 | 4 | 5 | 6 | 7 | 8 | 9 | 10 |
| 1 | m/s | 1480 | 1004 | 1309 | 1363 | 1445 | 1631 | 1682 | 1465 | 1292 |
| 2 | 1480 | | 1480 | 1013 | 1146 | 1238 | 1409 | 1518 | 1397 | 1192 |
| 3 | 1004 | 1480 | | 1791 | 1488 | 1389 | 1540 | 1650 | 1574 | 1336 |
| 4 | 1309 | 1013 | 1791 | | 1104 | 1261 | 1494 | 1574 | 1625 | 1389 |
| 5 | 1363 | 1146 | 1488 | 1104 | | 1002 | 1465 | 1390 | 1640 | 1419 |
| 6 | 1445 | 1238 | 1389 | 1261 | 1002 | | 1480 | 840 | 1466 | 1399 |
| 7 | 1631 | 1409 | 1540 | 1494 | 1465 | 1480 | | 1480 | 1457 | 1498 |
| 8 | 1682 | 1518 | 1650 | 1574 | 1390 | 840 | 1480 | | 1483 | 1429 |
| 9 | 1465 | 1397 | 1574 | 1625 | 1640 | 1466 | 1457 | 1483 | | 1084 |
| 10 | 1292 | 1192 | 1336 | 1389 | 1419 | 1399 | 1498 | 1429 | 1084 | |
| | 1 | 2 | 3 | 4 | 5 | 6 | 7 | 8 | 9 | 10 |
| 1 | m/s | 1480 | 866 | 1150 | 1306 | 1386 | 1500 | 1566 | 1333 | 1408 |
| 2 | 1480 | | 1480 | 964 | 1186 | 1321 | 1449 | 1531 | 1403 | 1294 |
| 3 | 866 | 1480 | | 1637 | 1590 | 1556 | 1603 | 1674 | 1618 | 1367 |
| 4 | 1150 | 964 | 1637 | | 1100 | 1465 | 1474 | 1557 | 1661 | 1496 |
| 5 | 1306 | 1186 | 1590 | 1100 | | 1553 | 1505 | 1390 | 1681 | 1575 |
| 6 | 1386 | 1321 | 1556 | 1465 | 1553 | | 1480 | 948 | 1463 | 1535 |
| 7 | 1500 | 1449 | 1603 | 1474 | 1505 | 1480 | | 1480 | 1322 | 1618 |
| 8 | 1566 | 1531 | 1674 | 1557 | 1390 | 948 | 1480 | | 1644 | 1590 |
| 9 | 1333 | 1403 | 1618 | 1661 | 1681 | 1463 | 1322 | 1644 | | 1084 |
| 10 | 1408 | 1294 | 1367 | 1496 | 1575 | 1535 | 1618 | 1590 | 1084 | |

Příloha č. 3: Šíření zvuku v metrech za sekundu vždy u první vrstvy každého vzorku u přístroje Arbotom Rinntech

Šíření zvuku v prvním vzorku

| Sondy | 1 | 2 | 3 | 4 | 5 | 6 | 7 | 8 |
|-------|-------|-------|-------|-------|-------|-------|-------|-------|
| 1 | m/s | | 1000 | 950 | 776 | 870 | 780 | |
| 2 | | | | 994 | 931 | 912 | 738 | 628 |
| 3 | 1000 | | | | 1115 | 1180 | 852 | 753 |
| 4 | 950 | 994 | | | | 930 | 1150 | 884 |
| 5 | 776 | 931 | 1115 | | | | 726 | 695 |
| 6 | 870 | 912 | 1180 | 930 | | | | 664 |
| 7 | 780 | 738 | 852 | 1150 | 726 | | | |
| 8 | | 628 | 753 | 884 | 695 | 664 | | |

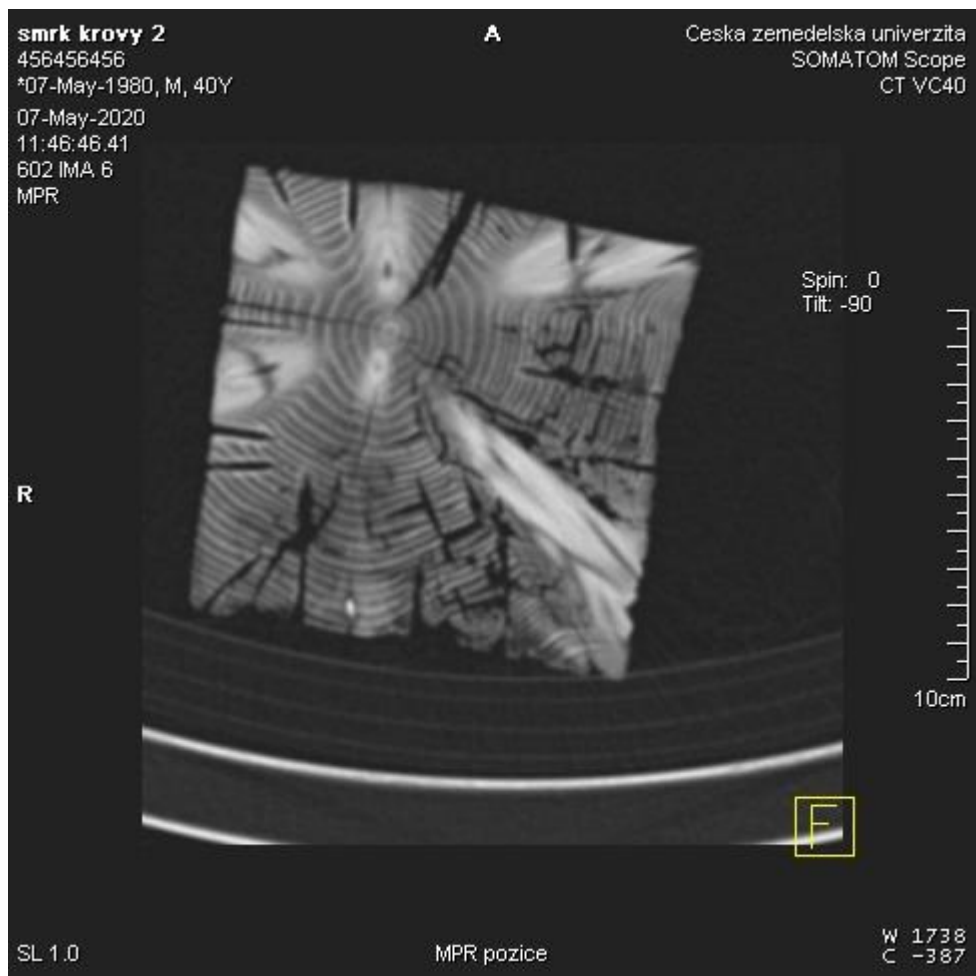
Šíření zvuku ve druhém vzorku

| Sondy | 1 | 2 | 3 | 4 | 5 | 6 | 7 | 8 |
|-------|-------|-------|-------|-------|-------|-------|-------|-------|
| 1 | m/s | | 712 | 554 | 597 | 645 | 416 | |
| 2 | | | | 565 | 796 | 1012 | 948 | 665 |
| 3 | 712 | | | | 620 | 725 | 793 | 583 |
| 4 | 554 | 565 | | | | 893 | 712 | 761 |
| 5 | 597 | 796 | 620 | | | | 1080 | 840 |
| 6 | 645 | 1012 | 725 | 893 | | | | 687 |
| 7 | 416 | 948 | 793 | 712 | 1080 | | | |
| 8 | | 665 | 583 | 761 | 840 | 687 | | |

Šíření zvuku ve třetím vzorku

| Sondy | 1 | 2 | 3 | 4 | 5 | 6 | 7 | 8 |
|-------|------|-------|-------|-------|-------|-------|-------|-------|
| 1 | m/s | 1530 | 1063 | 1354 | 1096 | 1548 | 1548 | 1647 |
| 2 | 1530 | | | 1312 | 1025 | 845 | 1205 | 1670 |
| 3 | 1063 | | | | 948 | 901 | 1305 | 1403 |
| 4 | 1354 | 1312 | | | | 749 | 1032 | 1312 |
| 5 | 1096 | 1025 | 948 | | | | 742 | 721 |
| 6 | 1548 | 845 | 901 | 749 | | | | 874 |
| 7 | 1548 | 1205 | 1305 | 1032 | 742 | | | |
| 8 | 1647 | 1670 | 1403 | 1312 | 721 | 874 | | |

Příloha č. 4: Snímek hnědé hniloby a zobrazení suků u přístroje Somatom Scope



Snímek suků a hnědé hniloby