

Structure of earnings survey: hourly earnings [earn_ses_hourly]

Last update 07.08.17
 Extracted on 07.03.19
 Source of data Eurostat

NACE_R2 Industry, construction and services (except public administration, defense, i
 ISCO08 Total
 WORKTIME Total
 AGE Total
 TIME 2006
 INDIC_SE Mean earnings in euro

GEO/SEX	2006			2010		2014
	Total	Males	Females	Males	Females	Males
Belgium	16.88	17.4	16.18	19.8	17.78	20.49
Czechia	4.21	4.69	3.59	6	4.73	5.99
Germany	16.21	17.99	13.92	18.81	14.62	19.87
Estonia	3.55	4.25	2.98	5.73	4.17	6.89
Ireland	20.83	22.82	18.89	23.94	20.62	26.2
Greece	9.52	10.44	8.28	11.81	10.03	10.07
Spain	10.05	10.84	8.9	12.43	10.41	12.76
France	15.53	16.68	14.1	17.54	14.8	18.78
Italy	13.5	13.75	13.16	14.82	14.04	15.85
Luxembourg	19.19	19.95	17.82	22.64	20.67	23.44
Netherlands	15.17	17.04	13.01	18.85	15.56	19.41
Austria	13.26	14.74	10.99	16.37	12.45	17.55
Portugal	7	7.3	6.68	8.23	7.18	8.08
Slovenia	6.75	7.01	6.45	9.13	9.07	9.14
Finland	15.52	17.46	13.75	20.35	16.22	21.78

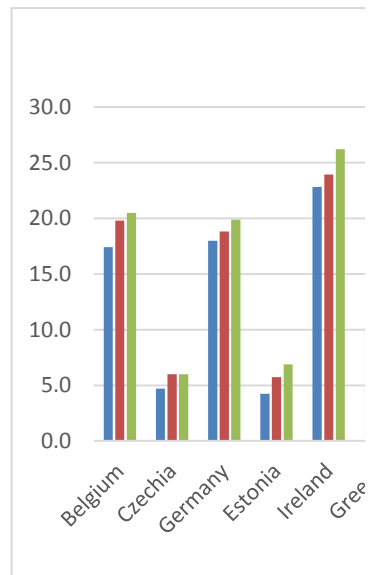
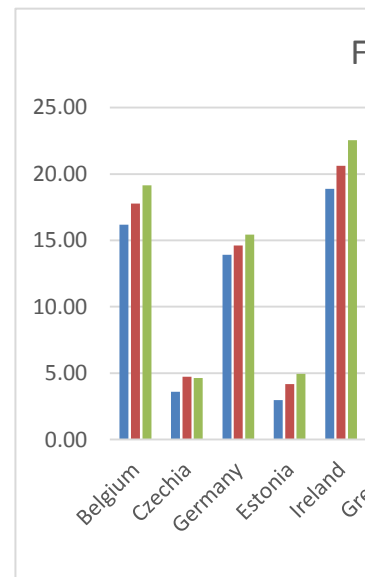
Females	2006	2010	2014
Belgium	16.18	17.78	19.15
Czechia	3.59	4.73	4.64
Germany	13.92	14.62	15.44
Estonia	2.98	4.17	4.95
Ireland	18.89	20.62	22.55
Greece	8.28	10.03	8.81
Spain	8.9	10.41	10.86
France	14.1	14.8	15.87
Italy	13.16	14.04	14.88
Luxembourg	17.82	20.67	22.18
Netherlands	13.01	15.56	16.29
Austria	10.99	12.45	13.65
Portugal	6.68	7.18	6.88
Slovenia	6.45	9.07	8.5
Finland	13.75	16.22	17.77

Males	2006
Belgium	17.4
Czechia	4.69
Germany	17.99
Estonia	4.25
Ireland	22.82
Greece	10.44
Spain	10.84
France	16.68
Italy	13.75
Luxembourg	19.95
Netherlands	17.04
Austria	14.74
Portugal	7.3
Slovenia	7.01
Finland	17.46

compulsory social security)

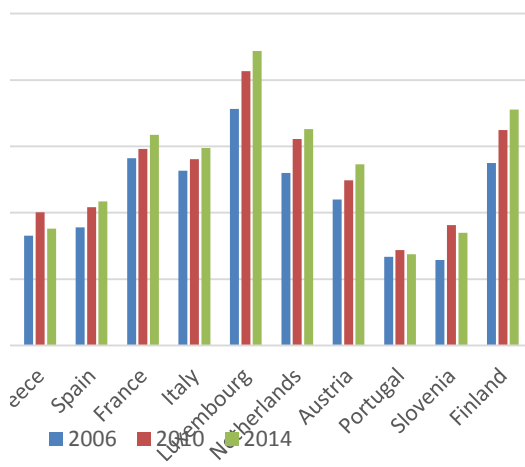
Females
19.15
4.64
15.44
4.95
22.55
8.81
10.86
15.87
14.88
22.18
16.29
13.65
6.88
8.5
17.77

2010	2014
19.8	20.49
6	5.99
18.81	19.87
5.73	6.89
23.94	26.2
11.81	10.07
12.43	12.76
17.54	18.78
14.82	15.85
22.64	23.44
18.85	19.41
16.37	17.55
8.23	8.08
9.13	9.14
20.35	21.78

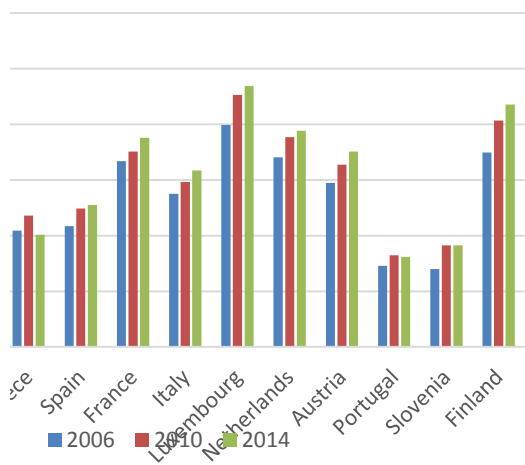


■ Females - Cz

Females - 2006 - 2014



Males - 2006 - 2014



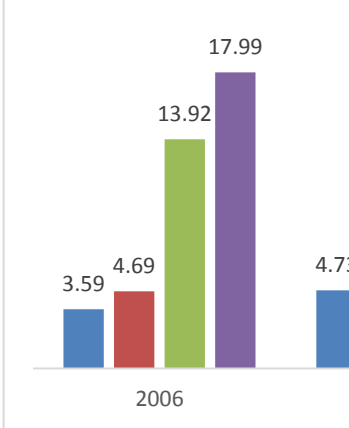
CZ/GE - 2004 - 2014

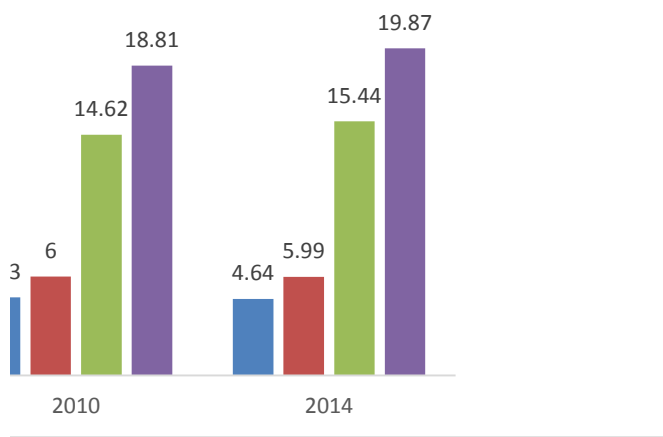
■ Males - Cz ■ Females - Ge ■ Males - Ge

	2006	2010	2014		
Females -Cz	3.59	4.73	4.64	4.32	
Males - Cz	4.69	6	5.99	5.56	1.24
Females - Ge	13.92	14.62	15.44	14.66	
Males - Ge	17.99	18.81	19.87	18.89	4.23

0.223022

0.223928





Structure of earnings survey: hourly earnings [earn_ses_hourly]

Last update 07.08.17

Extracted on 07.03.19

Source of data: Eurostat

NACE_R2 Industry, construction and services (except public administration, defense, compulsory s

ISCO08 Total

WORKTIME Total

AGE Total

TIME 2010

INDIC_SE Mean earnings in euro

GEO/SEX	Total	Males	Females
European Union	14.1	15.39	12.64
Euro area (12)	15.12	16.42	13.58
Belgium	18.92	19.8	17.78
Bulgaria	2.04	2.18	1.89
Czechia	5.43	6	4.73
Denmark	26.58	29.19	24.2
Germany (unweighted)	16.95	18.81	14.62
Estonia	4.84	5.73	4.17
Ireland	22.23	23.94	20.62
Greece	10.97	11.81	10.03
Spain	11.5	12.43	10.41
France	16.27	17.54	14.8
Croatia	5.87	6.03	5.69
Italy	14.48	14.82	14.04
Cyprus	12.08	13.12	10.91
Latvia	3.78	4.14	3.5
Lithuania	3.44	3.68	3.24
Luxembourg	21.95	22.64	20.67
Hungary	4.49	4.91	4.04
Malta	8.46	8.71	8.08
Netherlands	17.25	18.85	15.56
Austria	14.77	16.37	12.45
Poland	5.21	5.32	5.08
Portugal	7.71	8.23	7.18
Romania	2.63	2.74	2.5
Slovenia	9.1	9.13	9.07
Slovakia	4.74	5.24	4.21
Finland	18.12	20.35	16.22
Sweden	17.77	19.33	16.31
United Kingdom	16.98	19.2	14.71
Iceland	12.4	13.72	11.29
Norway	27.98	30.29	25.51
Switzerland	27.53	29.96	24.62
North Macedonia	2.83	2.91	2.75
Turkey	3.88	3.85	3.98

social security)

Special value:

: not available

Structure of earnings survey: hourly earnings [earn_ses_hourly]

Last update 07.08.17

Extracted on 07.03.19

Source of data: Eurostat

NACE_R2 Industry, construction and services (except public administration, defense, compulsory s
 ISCO08 Total
 WORKTIME Total
 AGE Total
 TIME 2014
 INDIC_SE Mean earnings in euro

GEO/SEX	Total	Males	Females
European Union	15.23	16.6	13.75
Euro area (1)	16.19	17.65	14.55
Belgium	19.9	20.49	19.15
Bulgaria	2.34	2.52	2.16
Czechia	5.38	5.99	4.64
Denmark	27.61	30.16	25.35
Germany (u)	17.78	19.87	15.44
Estonia	5.78	6.89	4.95
Ireland	24.22	26.2	22.55
Greece	9.48	10.07	8.81
Spain	11.85	12.76	10.86
France	17.4	18.78	15.87
Croatia	5.73	5.98	5.46
Italy	15.42	15.85	14.88
Cyprus	11.09	11.94	10.25
Latvia	4.41	4.89	4.04
Lithuania	3.91	4.2	3.65
Luxembourg	22.94	23.44	22.18
Hungary	4.64	5	4.25
Malta	9.89	10.35	9.25
Netherlands	17.89	19.41	16.29
Austria	15.93	17.55	13.65
Poland	5.66	5.87	5.42
Portugal	7.45	8.08	6.88
Romania	2.79	2.85	2.72
Slovenia	8.84	9.14	8.5
Slovakia	5.33	5.9	4.74
Finland	19.61	21.78	17.77
Sweden	20.64	22.22	19.14
United Kingd	18.76	20.93	16.56
Iceland	16.06	17.73	14.79
Norway	30.8	33.09	28.31
Switzerland	33.72	36.53	30.18
North Mace	2.7	2.81	2.56
Turkey	3.84	3.82	3.87

social security)

Special value:

: not available