

APPENDIX

100 M		Correlations																						
		Agricultural.a	Badlands.a	Forest.a	Grasslands.a	Orchards.a	Riparian.Veg.Ref.a	River.a	Roads.a	Urban.a	Water.a	EDGE.W												
Agricultural.a	Pearson Correlation	1																						
	Sig. (2-tailed)		.043	.738**	.270**	.003	.889	.033	.086	.191**	.186**	.131**												
	N	453	453	453	453	453	453	453	453	453	453	453	453	453	453	453	453	453	453	453	453	453	453	
Badlands.a	Pearson Correlation		1																					
	Sig. (2-tailed)			.953	.403	.497	.670	.693	.602	.604	.742	.077												
	N	453	453	453	453	453	453	453	453	453	453	453	453	453	453	453	453	453	453	453	453	453	453	
Forest.a	Pearson Correlation			1																				
	Sig. (2-tailed)				.006	.000	.025	.007	.083	.000	.057	.000												
	N	453	453	453	453	453	453	453	453	453	453	453	453	453	453	453	453	453	453	453	453	453	453	
Grasslands.a	Pearson Correlation				1																			
	Sig. (2-tailed)					.130	.515	.250	.043	.130	.087	.157												
	N	453	453	453	453	453	453	453	453	453	453	453	453	453	453	453	453	453	453	453	453	453	453	
Orchards.a	Pearson Correlation					1																		
	Sig. (2-tailed)						.048	.033	.028	.137**	.024	.152**												
	N	453	453	453	453	453	453	453	453	453	453	453	453	453	453	453	453	453	453	453	453	453	453	
Riparian.Veg.Ref.a	Pearson Correlation						1																	
	Sig. (2-tailed)							.310	.478	.555	.606	.001												
	N	453	453	453	453	453	453	453	453	453	453	453	453	453	453	453	453	453	453	453	453	453	453	
River.a	Pearson Correlation							1																
	Sig. (2-tailed)								.031	.048	.034	.067												
	N	453	453	453	453	453	453	453	453	453	453	453	453	453	453	453	453	453	453	453	453	453	453	
Roads.a	Pearson Correlation								1															
	Sig. (2-tailed)									.054	.034	.067												
	N	453	453	453	453	453	453	453	453	453	453	453	453	453	453	453	453	453	453	453	453	453	453	
Urban.a	Pearson Correlation									1														
	Sig. (2-tailed)										.082	.082												
	N	453	453	453	453	453	453	453	453	453	453	453	453	453	453	453	453	453	453	453	453	453	453	
Water.a	Pearson Correlation										1													
	Sig. (2-tailed)											.074	.062											
	N	453	453	453	453	453	453	453	453	453	453	453	453	453	453	453	453	453	453	453	453	453	453	
EDGE.W	Pearson Correlation											1												
	Sig. (2-tailed)												.014	.772	.000									
	N	453	453	453	453	453	453	453	453	453	453	453	453	453	453	453	453	453	453	453	453	453	453	

** . Correlation is significant at the 0.01 level (2-tailed).

* . Correlation is significant at the 0.05 level (2-tailed).

T 1 relationships between each land use at 100m

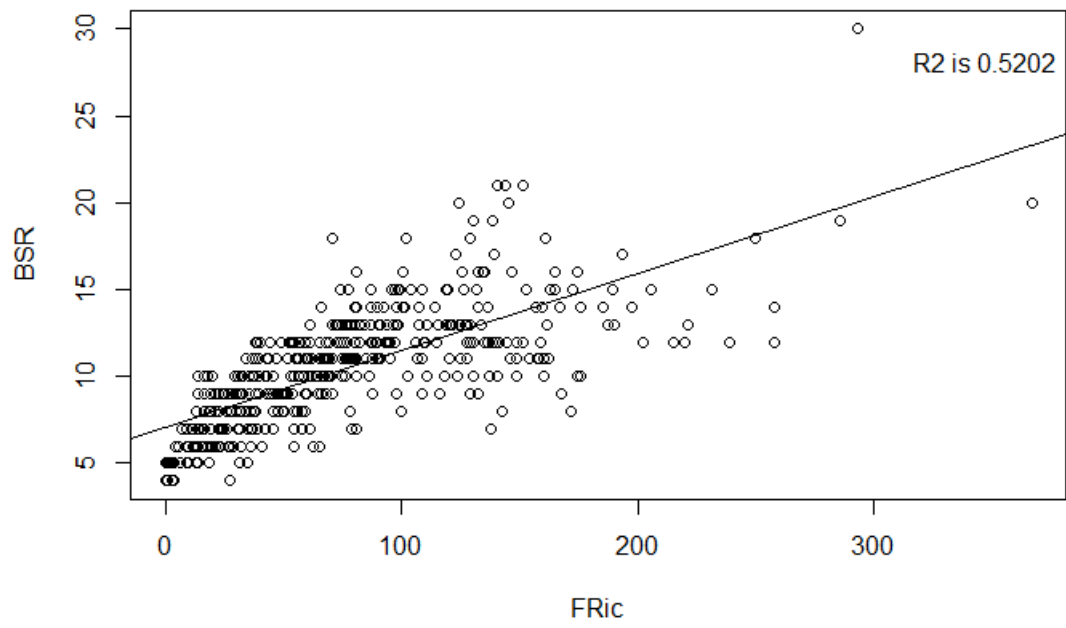
Correlations

All Cases	Agricultural.a	Badlands.a	Forest.a	Grasslands.a	Orchards.a	Riparian.Veg.Ref.a	River.a	Roads.a	Urban.a	Water.a	EDGE.W
Pearson Correlation	1	.454**	-.127**	-.052	.255**	.061	.020	.181**	.532**	.397**	.076
Sig. (2-tailed)		.000	.000	.118	.000	.068	.546	.000	.000	.000	.021
N	906	906	906	906	906	906	906	906	906	906	906
Pearson Correlation	.454**	1	.012	-.001	.012	-.010	.148**	.183**	.127**	.162**	.023
Sig. (2-tailed)	.000		.719	.971	.708	.769	.000	.000	.000	.000	.497
N	906	906	906	906	906	906	906	906	906	906	906
Pearson Correlation	-.127**	.012	1	.152**	-.037	.274**	.155**	.583**	-.034	.008	.462**
Sig. (2-tailed)	.000	.719		.000	.271	.000	.000	.000	.308	.805	.000
N	906	906	906	906	906	906	906	906	906	906	906
Pearson Correlation	-.052	-.001	.152**	1	-.028	.123**	-.025	.333**	-.035	.005	.253**
Sig. (2-tailed)	.118	.971	.000		.403	.000	.448	.000	.295	.878	.000
N	906	906	906	906	906	906	906	906	906	906	906
Pearson Correlation	.255**	.012	-.037	-.028	1	-.023	-.011	.011	.121**	.022	-.020
Sig. (2-tailed)	.000	.708	.271	.403		.498	.737	.733	.000	.501	.539
N	906	906	906	906	906	906	906	906	906	906	906
Pearson Correlation	.061	-.010	.274**	.123**	-.023	1	.021	.191**	.025	-.008	.096**
Sig. (2-tailed)	.068	.769	.000	.000	.498		.528	.000	.460	.810	.004
N	906	906	906	906	906	906	906	906	906	906	906
Pearson Correlation	.020	.148**	.155**	-.025	-.011	.021	1	.030	.225**	-.015	.044
Sig. (2-tailed)	.546	.000	.000	.448	.737	.528		.371	.000	.661	.184
N	906	906	906	906	906	906	906	906	906	906	906
Pearson Correlation	.181**	.183**	.583**	.333**	.011	.191**	.030	1	.149**	.121**	.086**
Sig. (2-tailed)	.000	.000	.000	.000	.733	.000	.371		.000	.000	.009
N	906	906	906	906	906	906	906	906	906	906	906
Pearson Correlation	.532**	.127**	-.034	-.035	.121**	.025	.225**	.149**	1	.338**	-.034
Sig. (2-tailed)	.000	.000	.308	.295	.000	.460	.000	.000		.000	.301
N	906	906	906	906	906	906	906	906	906	906	906
Pearson Correlation	.397**	.162**	.008	.005	.022	-.008	-.015	.121**	.338**	1	.018
Sig. (2-tailed)	.000	.000	.805	.878	.501	.810	.661	.000	.000		.598
N	906	906	906	906	906	906	906	906	906	906	906
Pearson Correlation	.076*	.023	.462**	.253**	-.020	.096**	.044	.086**	-.034	.018	1
Sig. (2-tailed)	.021	.497	.000	.000	.539	.004	.184	.009	.301	.598	
N	906	906	906	906	906	906	906	906	906	906	906

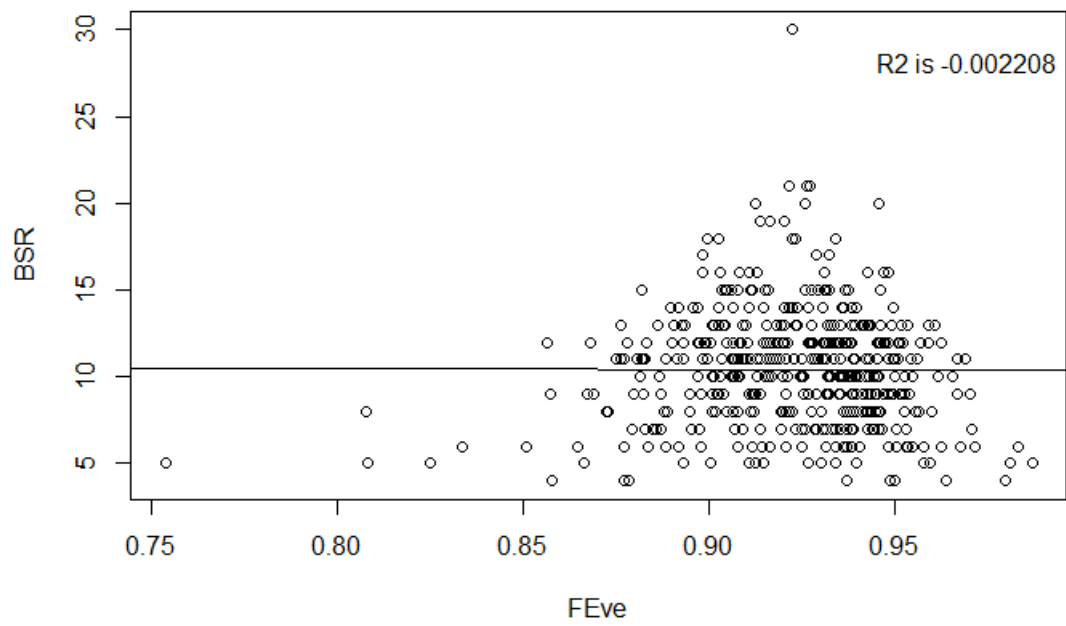
** . Correlation is significant at the 0.01 level (2-tailed).

* . Correlation is significant at the 0.05 level (2-tailed).

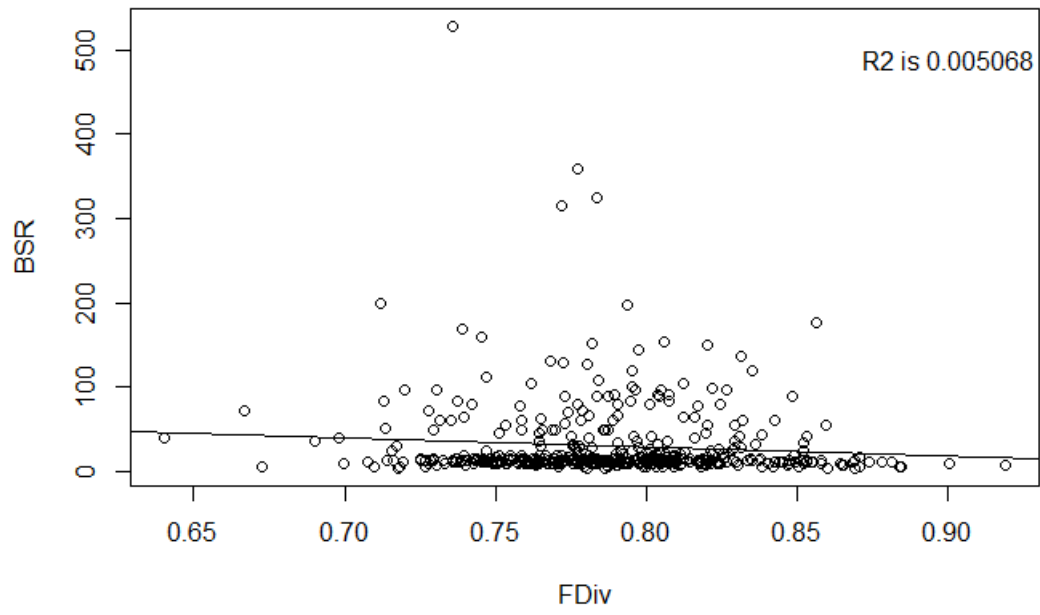
T 2 relationships between each land use at 100m



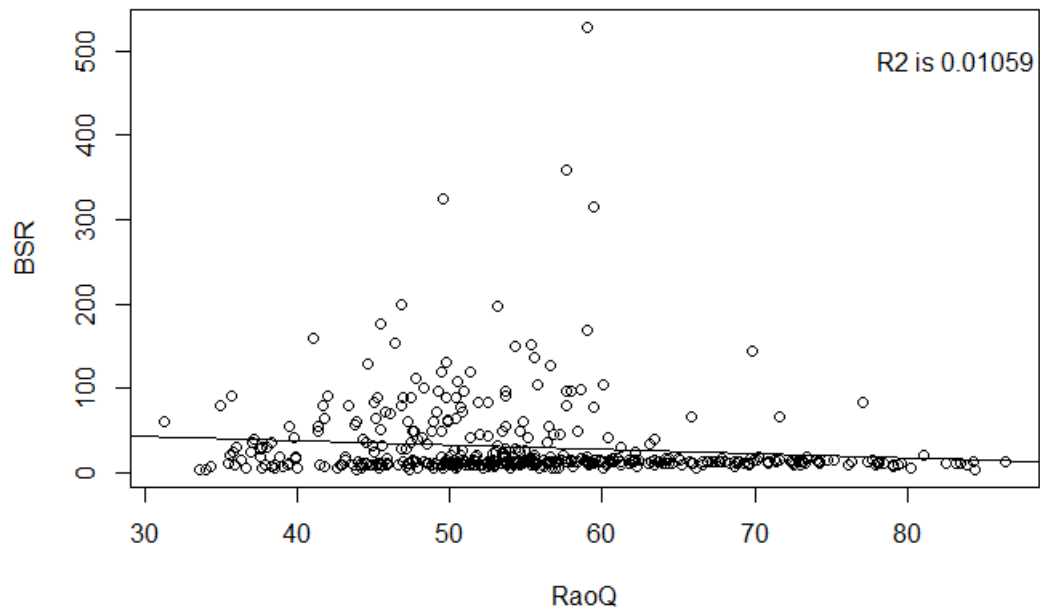
S 1 correlation between BSR and FRic



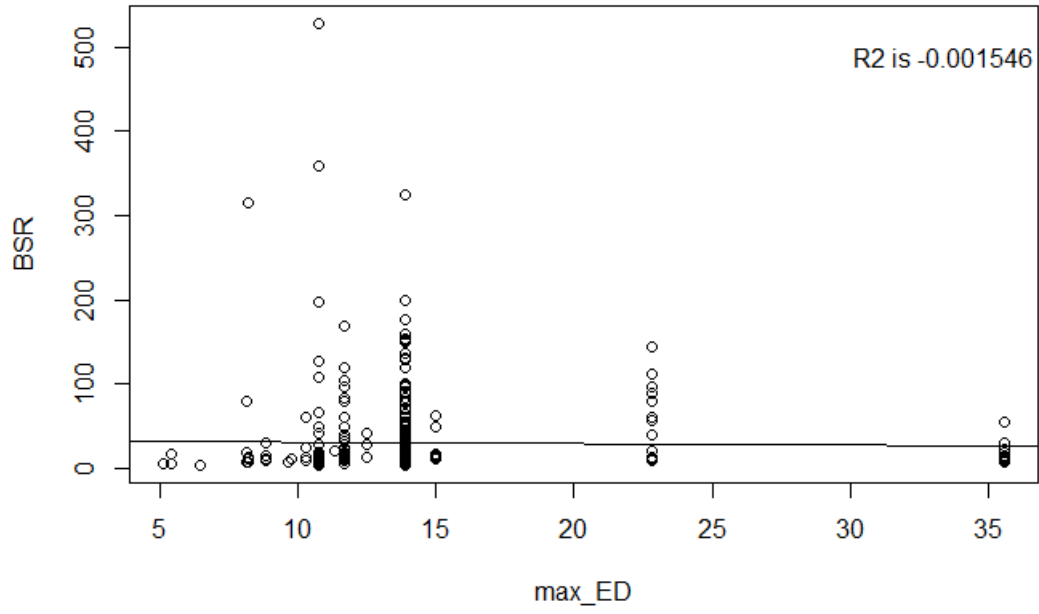
S 2 correlation between BSR and FEve



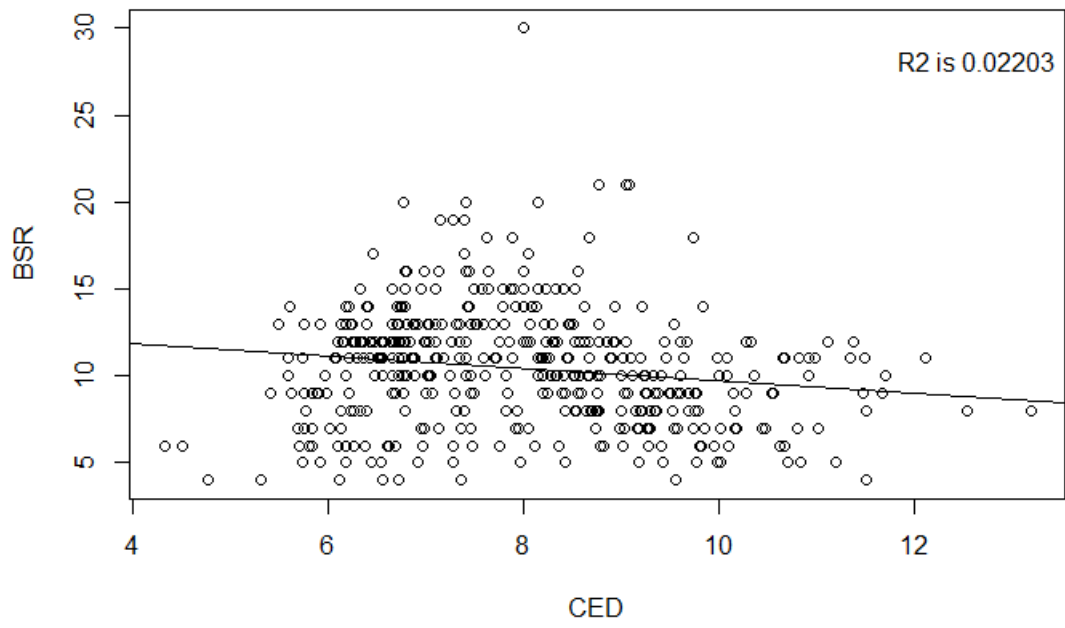
S 3 correlation between BSR and FDiv



S 4 correlation between BSR and RaoQ



S 5 correlation between BSR and max_ED



S 6 correlation between BSR and CED