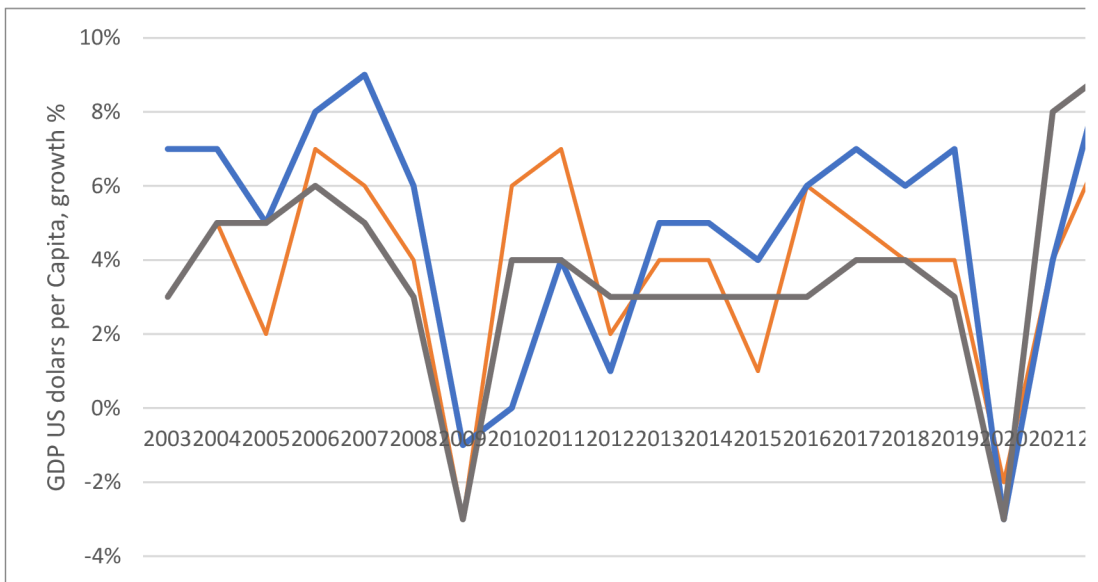
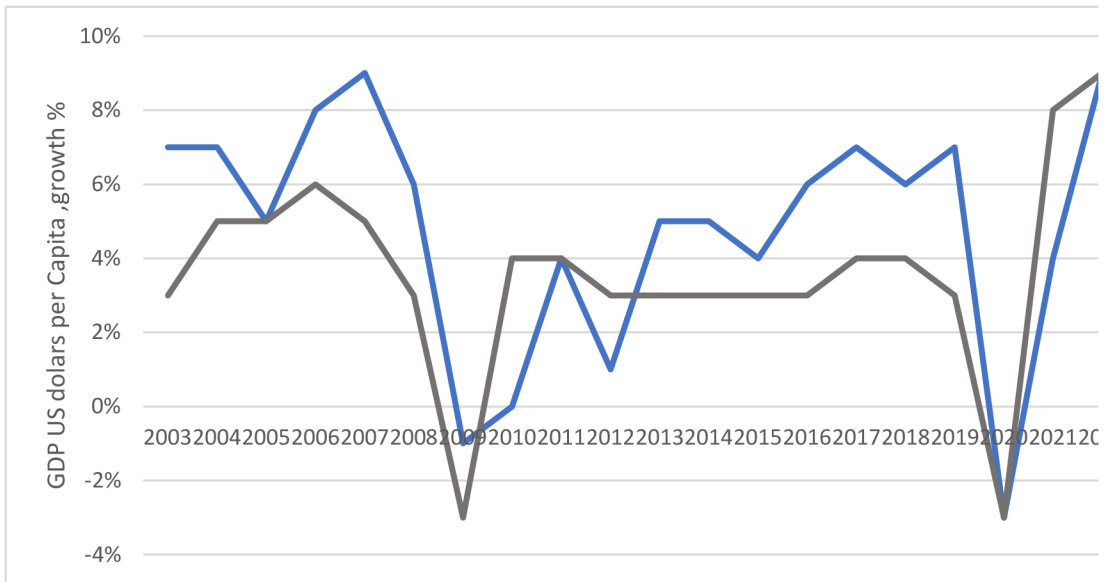
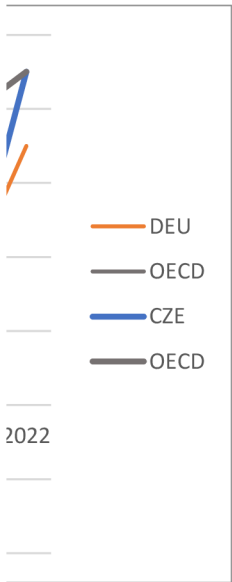


| LOCATION | INDICATOR | SUBJECT | MEASURE | FREQUENC | TIME | 18,246.00 | % |
|----------|-----------|---------|---------|----------|------|-----------|-----|
| CZE | GDP | TOT | USD_CAP | A | 2003 | 19524.4 | 7% |
| CZE | GDP | TOT | USD_CAP | A | 2004 | 20912.05 | 7% |
| CZE | GDP | TOT | USD_CAP | A | 2005 | 22046 | 5% |
| CZE | GDP | TOT | USD_CAP | A | 2006 | 23857.52 | 8% |
| CZE | GDP | TOT | USD_CAP | A | 2007 | 26224.94 | 9% |
| CZE | GDP | TOT | USD_CAP | A | 2008 | 27853.55 | 6% |
| CZE | GDP | TOT | USD_CAP | A | 2009 | 27635.96 | -1% |
| CZE | GDP | TOT | USD_CAP | A | 2010 | 27766.98 | 0% |
| CZE | GDP | TOT | USD_CAP | A | 2011 | 28999.75 | 4% |
| CZE | GDP | TOT | USD_CAP | A | 2012 | 29258.9 | 1% |
| CZE | GDP | TOT | USD_CAP | A | 2013 | 30828.53 | 5% |
| CZE | GDP | TOT | USD_CAP | A | 2014 | 32504.22 | 5% |
| CZE | GDP | TOT | USD_CAP | A | 2015 | 33909.31 | 4% |
| CZE | GDP | TOT | USD_CAP | A | 2016 | 36101.29 | 6% |
| CZE | GDP | TOT | USD_CAP | A | 2017 | 38842.9 | 7% |
| CZE | GDP | TOT | USD_CAP | A | 2018 | 41157.37 | 6% |
| CZE | GDP | TOT | USD_CAP | A | 2019 | 44223.3 | 7% |
| CZE | GDP | TOT | USD_CAP | A | 2020 | 42817.87 | -3% |
| CZE | GDP | TOT | USD_CAP | A | 2021 | 44813 | 4% |
| CZE | GDP | TOT | USD_CAP | A | 2022 | 49122.32 | 9% |
| | | | | | | 29504 | |
| DEU | GDP | TOT | USD_CAP | A | 2003 | 30270.99 | 3% |
| DEU | GDP | TOT | USD_CAP | A | 2004 | 31741.88 | 5% |
| DEU | GDP | TOT | USD_CAP | A | 2005 | 32236.74 | 2% |
| DEU | GDP | TOT | USD_CAP | A | 2006 | 34664.54 | 7% |
| DEU | GDP | TOT | USD_CAP | A | 2007 | 36863.11 | 6% |
| DEU | GDP | TOT | USD_CAP | A | 2008 | 38432.45 | 4% |
| DEU | GDP | TOT | USD_CAP | A | 2009 | 37465.46 | -3% |
| DEU | GDP | TOT | USD_CAP | A | 2010 | 39675 | 6% |
| DEU | GDP | TOT | USD_CAP | A | 2011 | 42541.51 | 7% |
| DEU | GDP | TOT | USD_CAP | A | 2012 | 43359.54 | 2% |
| DEU | GDP | TOT | USD_CAP | A | 2013 | 44993.67 | 4% |
| DEU | GDP | TOT | USD_CAP | A | 2014 | 47011.28 | 4% |
| DEU | GDP | TOT | USD_CAP | A | 2015 | 47609.56 | 1% |
| DEU | GDP | TOT | USD_CAP | A | 2016 | 50579.48 | 6% |
| DEU | GDP | TOT | USD_CAP | A | 2017 | 53071.48 | 5% |
| DEU | GDP | TOT | USD_CAP | A | 2018 | 55195.72 | 4% |
| DEU | GDP | TOT | USD_CAP | A | 2019 | 57411.52 | 4% |
| DEU | GDP | TOT | USD_CAP | A | 2020 | 56454.18 | -2% |
| DEU | GDP | TOT | USD_CAP | A | 2021 | 59055.32 | 4% |
| DEU | GDP | TOT | USD_CAP | A | 2022 | 63521.9 | 7% |
| | | | | | | 26233 | |
| OECD | GDP | TOT | USD_CAP | A | 2003 | 27023.77 | 3% |
| OECD | GDP | TOT | USD_CAP | A | 2004 | 28467.98 | 5% |
| OECD | GDP | TOT | USD_CAP | A | 2005 | 29814.04 | 5% |
| OECD | GDP | TOT | USD_CAP | A | 2006 | 31805.54 | 6% |
| OECD | GDP | TOT | USD_CAP | A | 2007 | 33354.23 | 5% |
| OECD | GDP | TOT | USD_CAP | A | 2008 | 34219.43 | 3% |
| OECD | GDP | TOT | USD_CAP | A | 2009 | 33256.51 | -3% |
| OECD | GDP | TOT | USD_CAP | A | 2010 | 34559.43 | 4% |

| | | | | | | | |
|------|-----|-----|---------|---|------|----------|-----|
| OECD | GDP | TOT | USD_CAP | A | 2011 | 35935.71 | 4% |
| OECD | GDP | TOT | USD_CAP | A | 2012 | 36893.88 | 3% |
| OECD | GDP | TOT | USD_CAP | A | 2013 | 38230.9 | 3% |
| OECD | GDP | TOT | USD_CAP | A | 2014 | 39332.14 | 3% |
| OECD | GDP | TOT | USD_CAP | A | 2015 | 40451.09 | 3% |
| OECD | GDP | TOT | USD_CAP | A | 2016 | 41910.63 | 3% |
| OECD | GDP | TOT | USD_CAP | A | 2017 | 43513.48 | 4% |
| OECD | GDP | TOT | USD_CAP | A | 2018 | 45192.43 | 4% |
| OECD | GDP | TOT | USD_CAP | A | 2019 | 46663.59 | 3% |
| OECD | GDP | TOT | USD_CAP | A | 2020 | 45378.71 | -3% |
| OECD | GDP | TOT | USD_CAP | A | 2021 | 49215.28 | 8% |
| OECD | GDP | TOT | USD_CAP | A | 2022 | 54052.62 | 9% |





| LOCATION | INDICATOR | SUBJECT | MEASURE | FREQUENCY | TIME | Value |
|----------|-----------|---------|---------|-----------|------|-------|
| CZE | HUR | TOT | PC_LF | A | 2003 | 7.78 |
| CZE | HUR | TOT | PC_LF | A | 2004 | 8.29 |
| CZE | HUR | TOT | PC_LF | A | 2005 | 7.94 |
| CZE | HUR | TOT | PC_LF | A | 2006 | 7.13 |
| CZE | HUR | TOT | PC_LF | A | 2007 | 5.33 |
| CZE | HUR | TOT | PC_LF | A | 2008 | 4.41 |
| CZE | HUR | TOT | PC_LF | A | 2009 | 6.68 |
| CZE | HUR | TOT | PC_LF | A | 2010 | 7.29 |
| CZE | HUR | TOT | PC_LF | A | 2011 | 6.72 |
| CZE | HUR | TOT | PC_LF | A | 2012 | 6.98 |
| CZE | HUR | TOT | PC_LF | A | 2013 | 6.97 |
| CZE | HUR | TOT | PC_LF | A | 2014 | 6.12 |
| CZE | HUR | TOT | PC_LF | A | 2015 | 5.06 |
| CZE | HUR | TOT | PC_LF | A | 2016 | 3.97 |
| CZE | HUR | TOT | PC_LF | A | 2017 | 2.91 |
| CZE | HUR | TOT | PC_LF | A | 2018 | 2.27 |
| CZE | HUR | TOT | PC_LF | A | 2019 | 2.02 |
| CZE | HUR | TOT | PC_LF | A | 2020 | 2.55 |
| CZE | HUR | TOT | PC_LF | A | 2021 | 2.81 |
| CZE | HUR | TOT | PC_LF | A | 2022 | 2.40 |
| DEU | HUR | TOT | PC_LF | A | 2003 | 9.81 |
| DEU | HUR | TOT | PC_LF | A | 2004 | 10.50 |
| DEU | HUR | TOT | PC_LF | A | 2005 | 11.28 |
| DEU | HUR | TOT | PC_LF | A | 2006 | 10.28 |
| DEU | HUR | TOT | PC_LF | A | 2007 | 8.54 |
| DEU | HUR | TOT | PC_LF | A | 2008 | 7.43 |
| DEU | HUR | TOT | PC_LF | A | 2009 | 7.23 |
| DEU | HUR | TOT | PC_LF | A | 2010 | 6.58 |
| DEU | HUR | TOT | PC_LF | A | 2011 | 5.52 |
| DEU | HUR | TOT | PC_LF | A | 2012 | 5.08 |
| DEU | HUR | TOT | PC_LF | A | 2013 | 4.95 |
| DEU | HUR | TOT | PC_LF | A | 2014 | 4.71 |
| DEU | HUR | TOT | PC_LF | A | 2015 | 4.37 |
| DEU | HUR | TOT | PC_LF | A | 2016 | 3.91 |
| DEU | HUR | TOT | PC_LF | A | 2017 | 3.57 |
| DEU | HUR | TOT | PC_LF | A | 2018 | 3.21 |
| DEU | HUR | TOT | PC_LF | A | 2019 | 2.98 |
| DEU | HUR | TOT | PC_LF | A | 2020 | 3.63 |
| DEU | HUR | TOT | PC_LF | A | 2021 | 3.58 |
| DEU | HUR | TOT | PC_LF | A | 2022 | 3.07 |
| OECD | | | | | 2003 | 6.80 |
| OECD | | | | | 2004 | 6.80 |
| OECD | HUR | TOT | PC_LF | A | 2005 | 6.86 |
| OECD | HUR | TOT | PC_LF | A | 2006 | 6.35 |
| OECD | HUR | TOT | PC_LF | A | 2007 | 5.86 |
| OECD | HUR | TOT | PC_LF | A | 2008 | 6.19 |
| OECD | HUR | TOT | PC_LF | A | 2009 | 8.31 |
| OECD | HUR | TOT | PC_LF | A | 2010 | 8.53 |
| OECD | HUR | TOT | PC_LF | A | 2011 | 8.13 |
| OECD | HUR | TOT | PC_LF | A | 2012 | 8.11 |

| | | | | | | |
|------|-----|-----|-------|---|------|------|
| OECD | HUR | TOT | PC_LF | A | 2013 | 8.01 |
| OECD | HUR | TOT | PC_LF | A | 2014 | 7.46 |
| OECD | HUR | TOT | PC_LF | A | 2015 | 6.89 |
| OECD | HUR | TOT | PC_LF | A | 2016 | 6.47 |
| OECD | HUR | TOT | PC_LF | A | 2017 | 5.94 |
| OECD | HUR | TOT | PC_LF | A | 2018 | 5.49 |
| OECD | HUR | TOT | PC_LF | A | 2019 | 5.42 |
| OECD | HUR | TOT | PC_LF | A | 2020 | 7.16 |
| OECD | HUR | TOT | PC_LF | A | 2021 | 6.16 |
| OECD | HUR | TOT | PC_LF | A | 2022 | 5.00 |

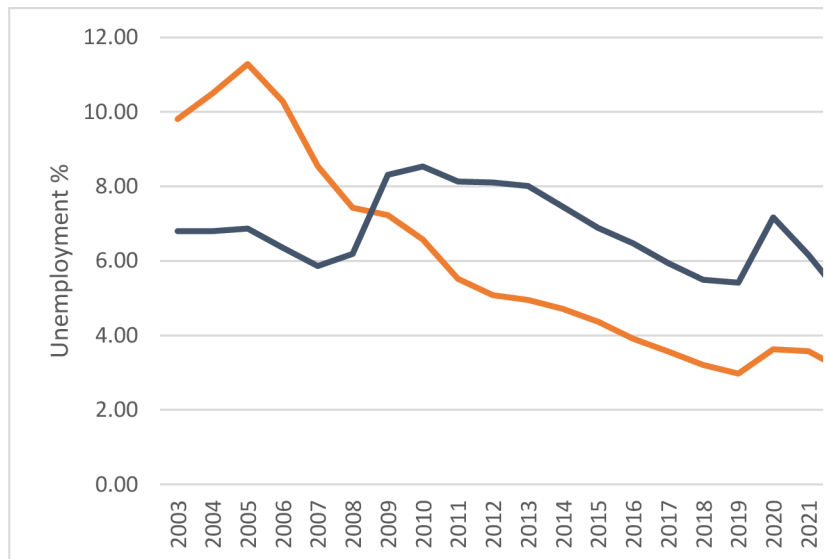
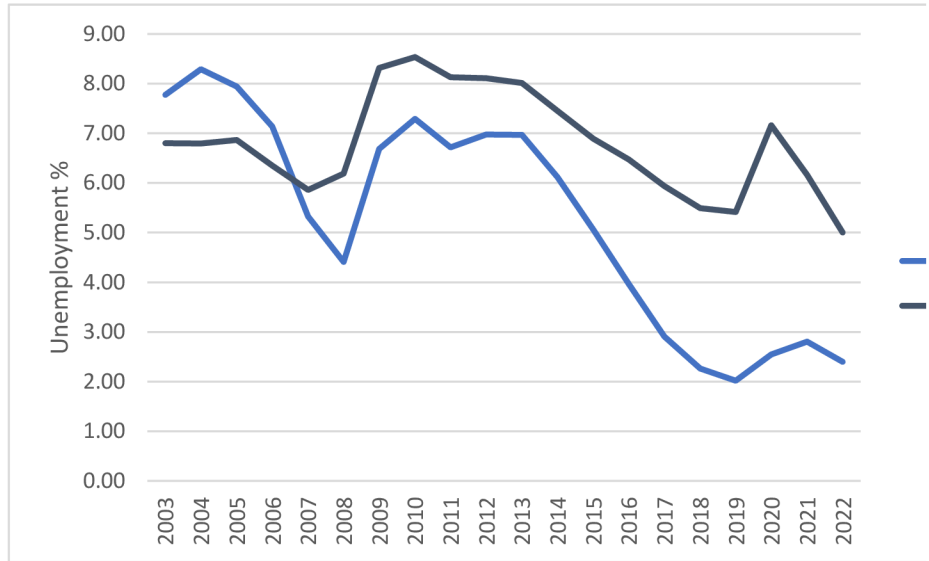
Flag Codes

2.28

-0.20

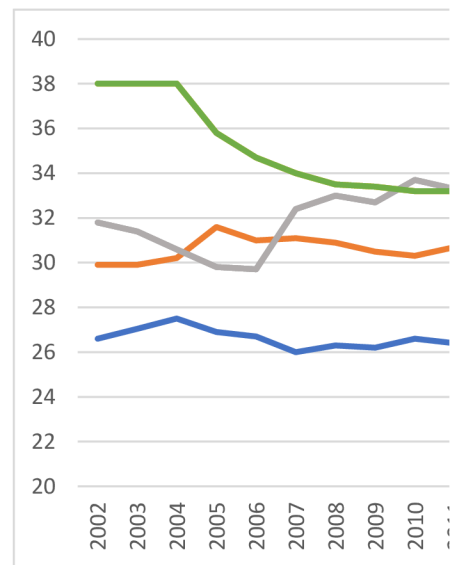
2.13

E
E
E
E
E
E
E

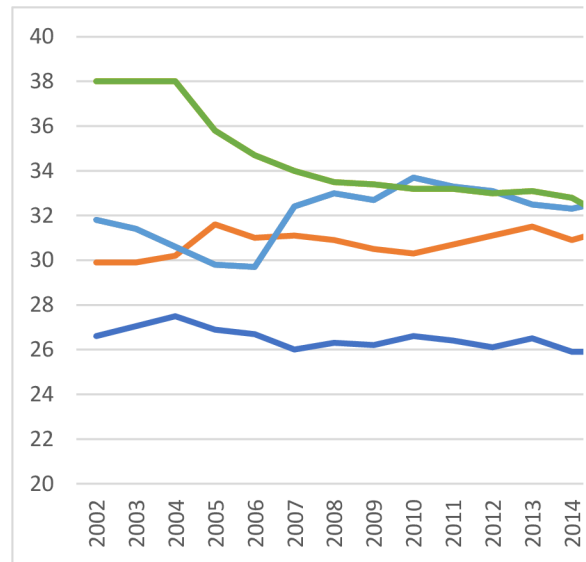
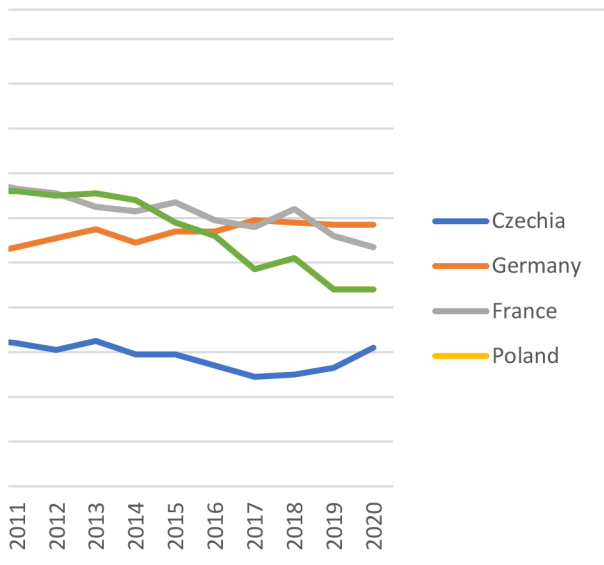




| Country Na | Country Co | Indicator N | Indicator C | 2002 | 2003 | 2004 | 2005 | 2006 |
|------------|------------|-------------|-------------|------|-------|------|------|------|
| Czechia | CZE | Gini index | SI.POV.GIN | 26.6 | 27.05 | 27.5 | 26.9 | 26.7 |
| Germany | DEU | Gini index | SI.POV.GIN | 29.9 | 29.9 | 30.2 | 31.6 | 31 |
| France | FRA | Gini index | SI.POV.GIN | 31.8 | 31.4 | 30.6 | 29.8 | 29.7 |
| Poland | POL | Gini index | SI.POV.GIN | 38 | 38 | 38 | 35.8 | 34.7 |

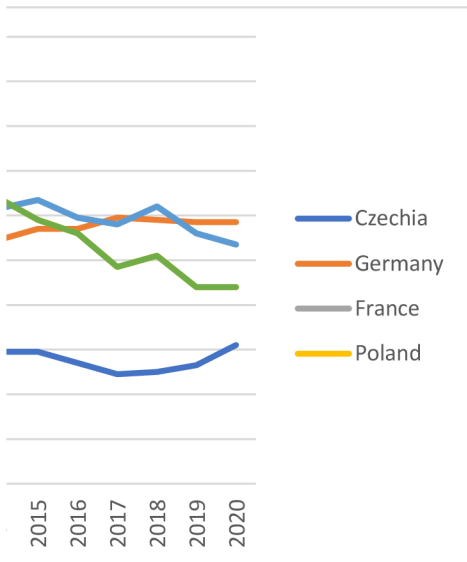


| | 2007 | 2008 | 2009 | 2010 | 2011 | 2012 | 2013 | 2014 | 2015 | |
|--|------|------|------|------|------|------|------|------|------|------|
| | | 26 | 26.3 | 26.2 | 26.6 | 26.4 | 26.1 | 26.5 | 25.9 | 25.9 |
| | 31.1 | 30.9 | 30.5 | 30.3 | 30.7 | 31.1 | 31.5 | 30.9 | 31.4 | |
| | 32.4 | 33 | 32.7 | 33.7 | 33.3 | 33.1 | 32.5 | 32.3 | 32.7 | |
| | 34 | 33.5 | 33.4 | 33.2 | 33.2 | 33 | 33.1 | 32.8 | 31.8 | |

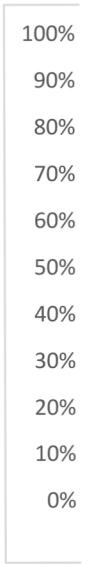


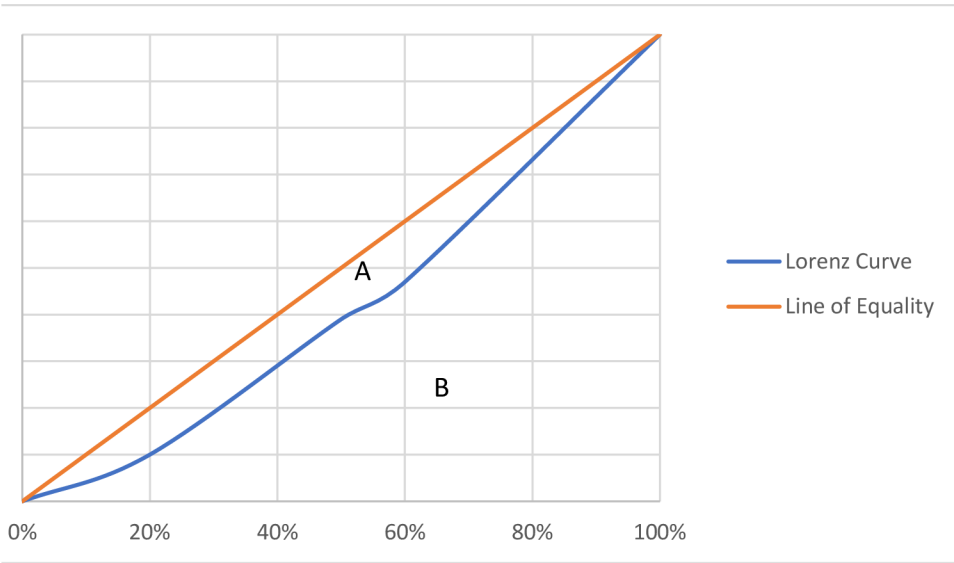
2016 2017 2018 2019 2020

| | | | | |
|------|------|------|------|------|
| 25.4 | 24.9 | 25 | 25.3 | 26.2 |
| 31.4 | 31.9 | 31.8 | 31.7 | 31.7 |
| 31.9 | 31.6 | 32.4 | 31.2 | 30.7 |
| 31.2 | 29.7 | 30.2 | 28.8 | 28.8 |



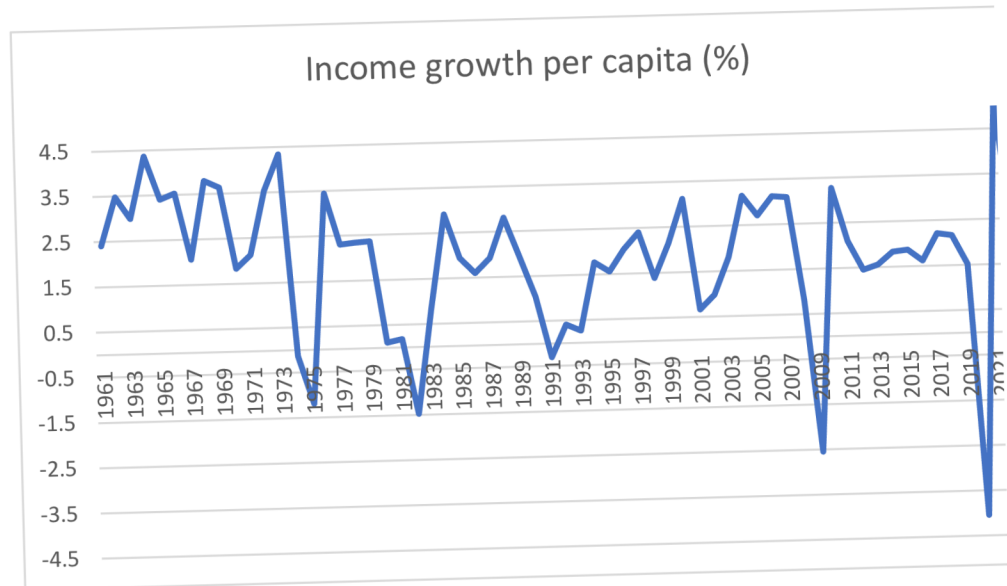
| population | income | x | y |
|------------|--------|------|------|
| 0% | 0% | 0% | 0% |
| 20% | 10% | 10% | 10% |
| 50% | 39% | 20% | 20% |
| 60% | 47% | 30% | 30% |
| 100% | 100% | 40% | 40% |
| | | 50% | 50% |
| | | 60% | 60% |
| | | 70% | 70% |
| | | 80% | 80% |
| | | 90% | 90% |
| | | 100% | 100% |





| Country Na | Country Co | Indicator Name | 1961 | 1962 | 1963 | 1964 |
|------------|------------|----------------------------------|----------|----------|----------|----------|
| World | WLD | GDP per capita growth (annual %) | 2.406823 | 3.481678 | 2.991508 | 4.367685 |

1965 1966 1967 1968 1969 1970 1971 1972 1973
3.399931 3.526723 2.054023 3.793393 3.637293 1.829525 2.125768 3.536541 4.332789



| 1974 | 1975 | 1976 | 1977 | 1978 | 1979 | 1980 | 1981 | 1982 |
|----------|----------|----------|----------|----------|----------|----------|----------|----------|
| -0.13585 | -1.19758 | 3.447109 | 2.303965 | 2.341024 | 2.363863 | 0.111933 | 0.180175 | -1.47888 |



| | | | | | | | | |
|----------|----------|----------|----------|----------|----------|----------|----------|----------|
| 1983 | 1984 | 1985 | 1986 | 1987 | 1988 | 1989 | 1990 | 1991 |
| 0.824524 | 2.913543 | 1.936416 | 1.595298 | 1.924709 | 2.810191 | 1.928397 | 1.035515 | -0.30898 |

| | | | | | | | | |
|----------|----------|----------|----------|----------|---------|----------|----------|----------|
| 1992 | 1993 | 1994 | 1995 | 1996 | 1997 | 1998 | 1999 | 2000 |
| 0.405798 | 0.263566 | 1.770233 | 1.556973 | 2.036211 | 2.40588 | 1.381477 | 2.142739 | 3.120153 |

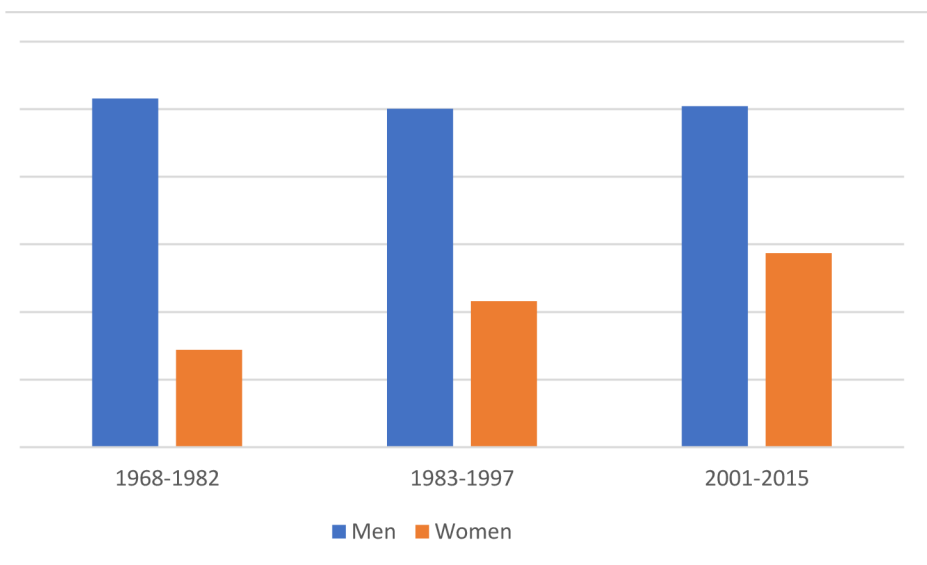
| 2001 | 2002 | 2003 | 2004 | 2005 | 2006 | 2007 | 2008 | 2009 |
|----------|---------|---------|----------|----------|---------|----------|---------|----------|
| 0.665887 | 0.97831 | 1.79895 | 3.156379 | 2.706933 | 3.12477 | 3.095458 | 0.81224 | -2.54718 |

| 2010 | 2011 | 2012 | 2013 | 2014 | 2015 | 2016 | 2017 | 2018 |
|----------|----------|----------|---------|----------|----------|----------|----------|----------|
| 3.277623 | 2.090389 | 1.451847 | 1.55439 | 1.830687 | 1.867601 | 1.616463 | 2.215694 | 2.161637 |

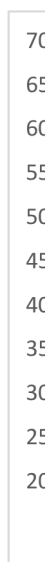
| 2019 | 2020 | 2021 | 2022 |
|----------|----------|----------|----------|
| 1.522509 | -4.04239 | 5.120619 | 2.263729 |

| | Men | Women |
|-----------|----------|----------|
| 1968-1982 | \$51,575 | \$14,379 |
| 1983-1997 | \$50,044 | \$21,574 |
| 2001-2015 | \$50,442 | \$28,683 |





| year | CZE number | DEU Number | domestif | foreign |
|------|------------|------------|----------|---------|
| 2003 | 65 | | | |
| 2004 | 55 | | | |
| 2005 | 39 | | | |
| 2006 | 32 | | | |
| 2007 | 32 | | | |
| 2008 | 28 | | | |
| 2009 | 25 | | | |
| 2010 | 27 | | | |
| 2011 | 26 | | | |
| 2012 | 28 | | | |
| 2013 | 26 | | | |
| 2014 | 23 | | | |
| 2015 | 25 | | | |
| 2016 | 25 | | | |
| 2017 | 23 | 499 | 450 | |
| 2018 | 53 | 514 | 465 | |
| 2019 | 54 | 523 | 471 | |
| 2020 | 55 | 485 | 438 | |
| 2021 | 55 | 489 | 440 | |
| 2022 | 59 | 489 | 436 | |
| 2023 | 61 | | | |



<http://ftp.pse.cz/Statist.dta/Objemy/Month/monthl>

<https://www.pse.cz/statisticke-soubory>

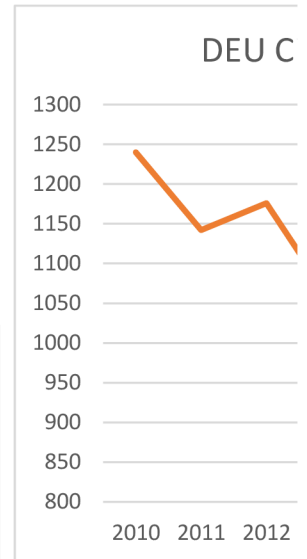
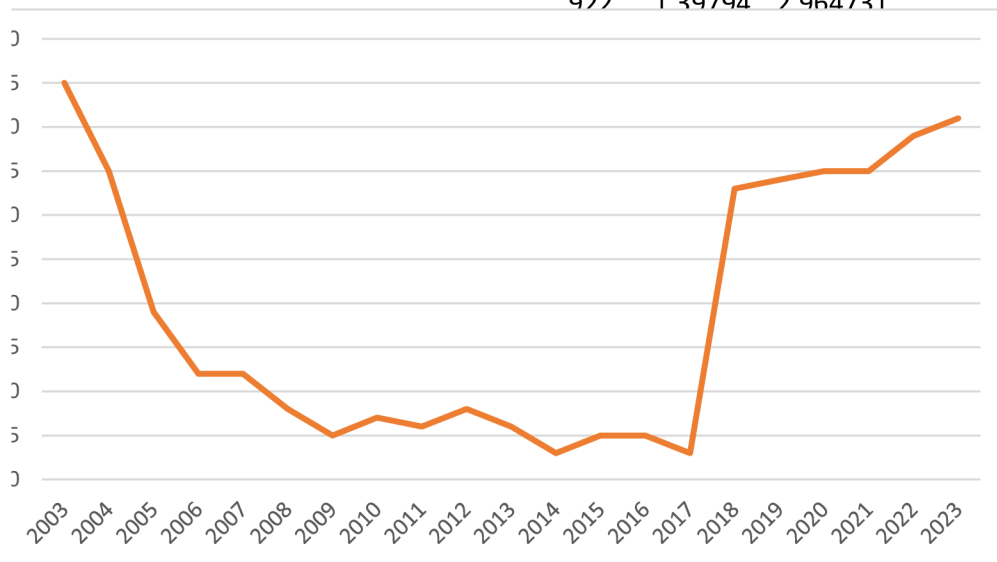
<https://www.pse.cz/en/annual-reports>

http://ftp.pse.cz/Info.bas/Statistiky/Rocni_udaje/key

DEU CDAX index - all companies in germany

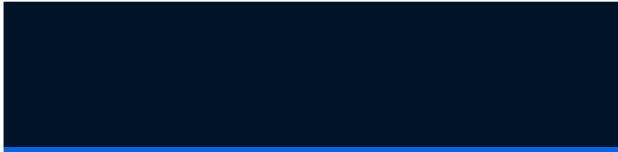
Czech Log DEU log

| | | |
|------|----------|----------|
| 1240 | 1.431364 | 3.093422 |
| 1142 | 1.414973 | 3.057666 |
| 1176 | 1.447158 | 3.070407 |
| 1052 | 1.414973 | 3.022016 |
| 994 | 1.361728 | 2.997386 |
| 922 | 1.39794 | 2.964731 |

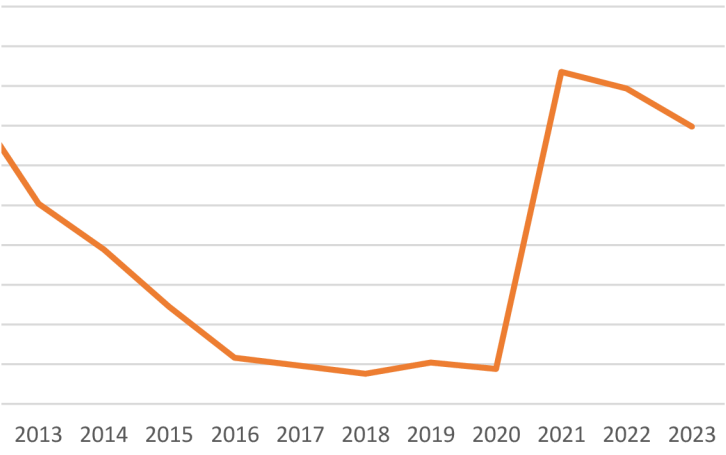


y-statistics-201901.pdf

/_data.pdf

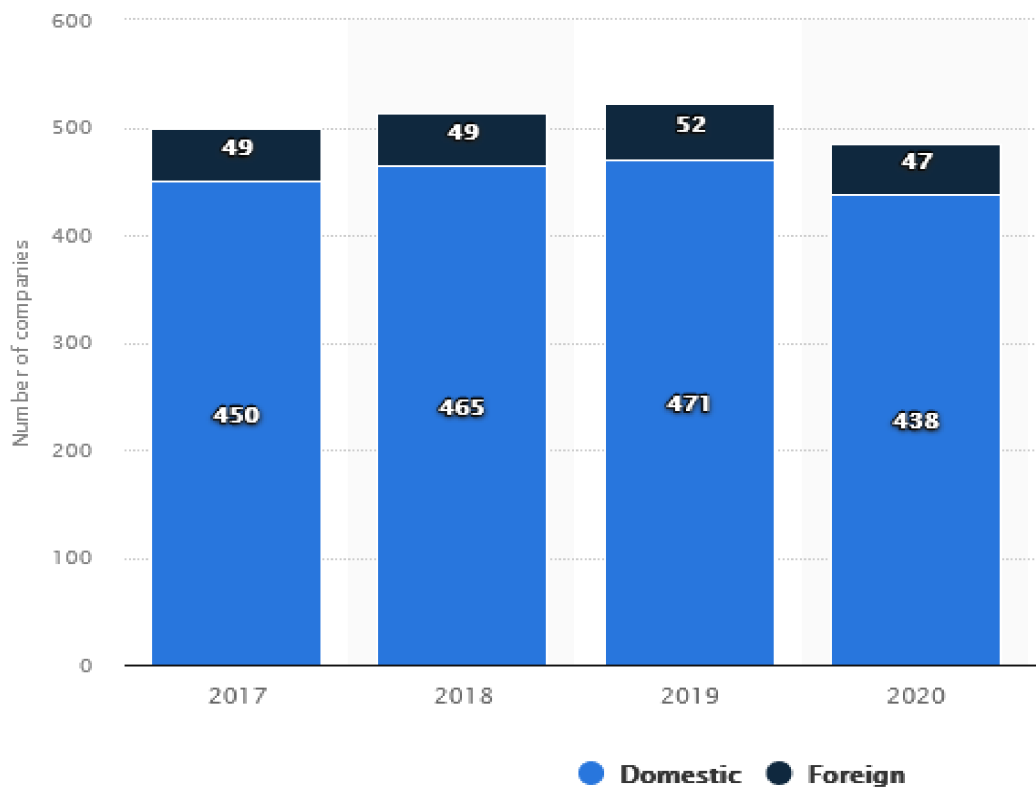


DAX index - all companies in germany



Finance & Insurance > Financial Instruments & Investments

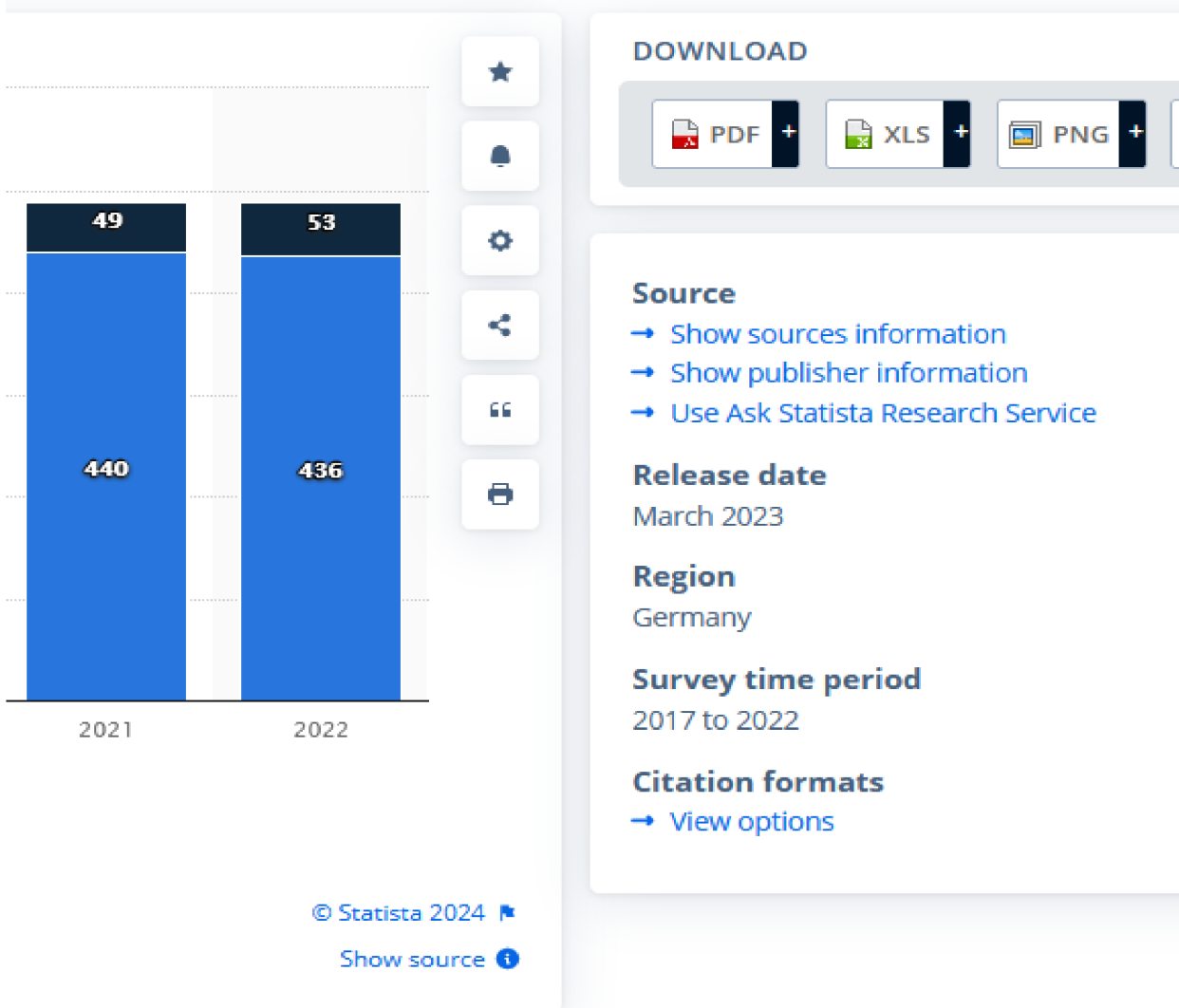
Number of companies listed on the Frankfurt Stock Exchange by location



[Additional Information](#)

Listed companies on the Frankfurt Stock Exchange 2017-2020

Frankfurt Stock Exchange from 2017 to 2022, by



DOWNLOAD

- PDF
- XLS
- PNG

Source

- [→ Show sources information](#)
- [→ Show publisher information](#)
- [→ Use Ask Statista Research Service](#)

Release date

March 2023

Region

Germany


Survey time period

2017 to 2022

Citation formats

- [→ View options](#)

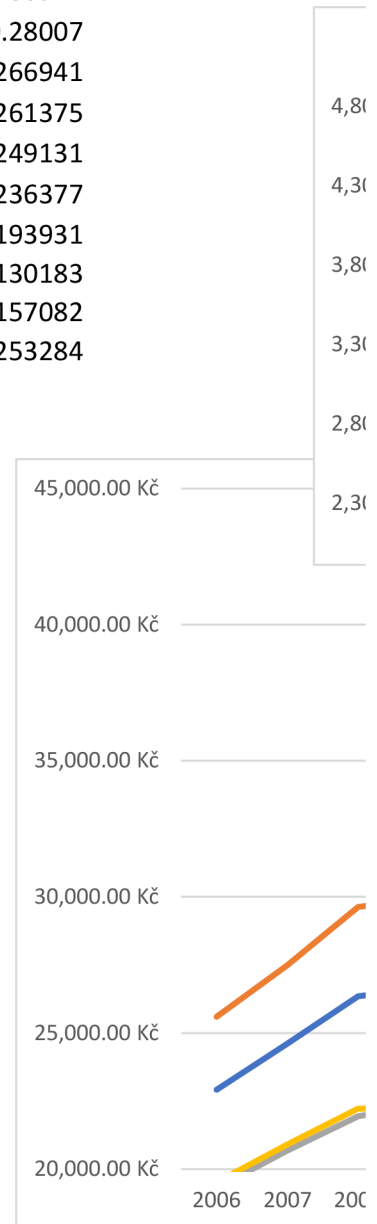
2 by location

 Login

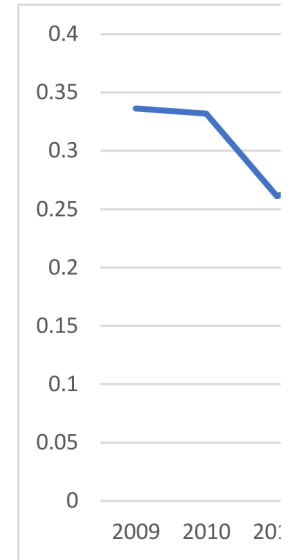
PREMIUM 

 PPT 

| year | Average wage Men | Women | Median wage |
|------|------------------|--------------|--------------|
| 2005 | | | |
| 2006 | 22,908.00 Kč | 25,593.00 Kč | 19,305.00 Kč |
| 2007 | 24,604.00 Kč | 27,489.00 Kč | 20,684.00 Kč |
| 2008 | 26,349.00 Kč | 29,628.00 Kč | 21,939.00 Kč |
| 2009 | 26,677.00 Kč | 29,953.00 Kč | 22,414.00 Kč |
| 2010 | 26,881.00 Kč | 30,192.00 Kč | 22,666.00 Kč |
| 2011 | 25,645.00 Kč | 28,234.00 Kč | 22,389.00 Kč |
| 2012 | 26,033.00 Kč | 28,873.00 Kč | 21,997.00 Kč |
| 2013 | 26,211.00 Kč | 29,026.00 Kč | 22,729.00 Kč |
| 2014 | 26,802.00 Kč | 29,721.00 Kč | 23,203.00 Kč |
| 2015 | 27,811.00 Kč | 30,842.00 Kč | 24,094.00 Kč |
| 2016 | 29,056.00 Kč | 32,065.00 Kč | 25,309.00 Kč |
| 2017 | 31,109.00 Kč | 34,293.00 Kč | 27,187.00 Kč |
| 2018 | 33,684.00 Kč | 37,008.00 Kč | 29,627.00 Kč |
| 2019 | 36,380.00 Kč | 39,820.00 Kč | 32,207.00 Kč |
| 2020 | 38,628.00 Kč | 41,667.00 Kč | 34,899.00 Kč |
| 2021 | 35,169.00 Kč | 37,070.00 Kč | 32,800.00 Kč |
| 2022 | 37,418.00 Kč | 40,020.00 Kč | 34,587.00 Kč |
| 2008 | | | 0.253284 |
| 2003 | | | |
| 2002 | | | |
| 2001 | | | |

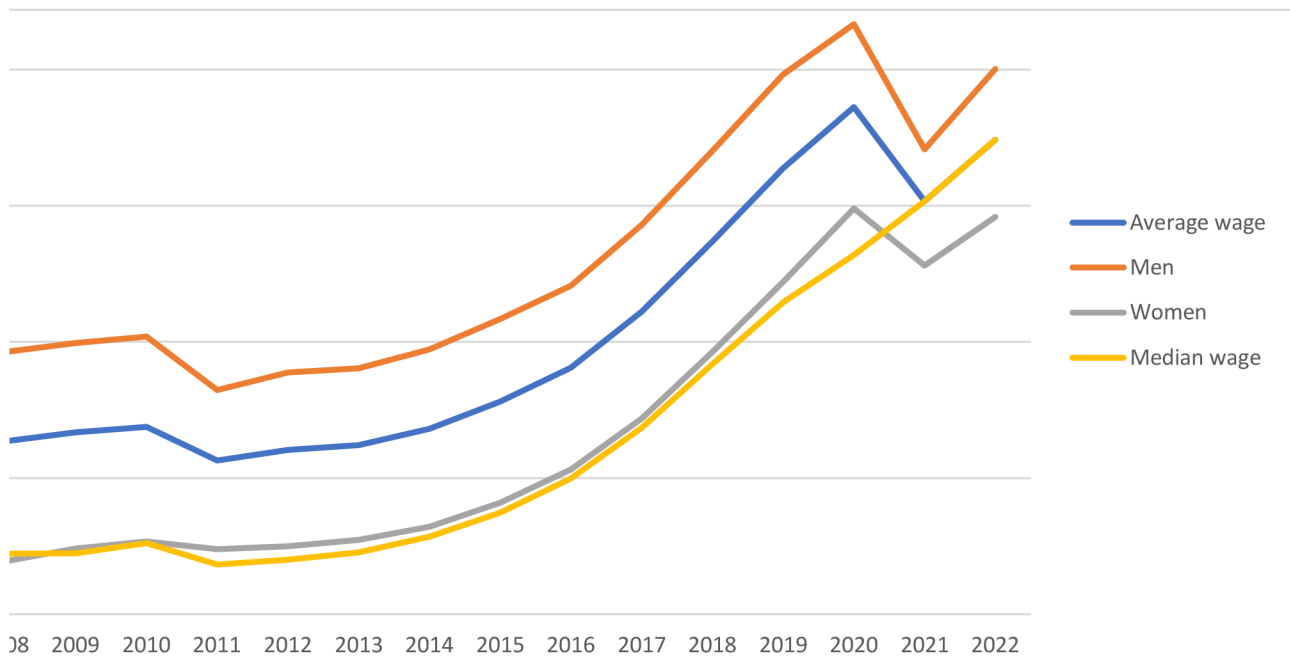
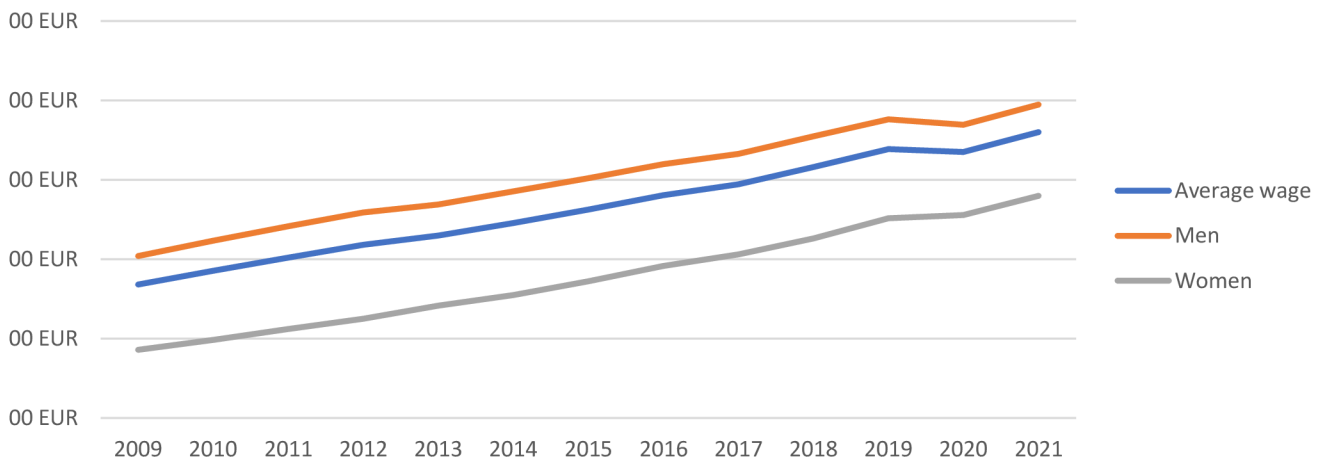


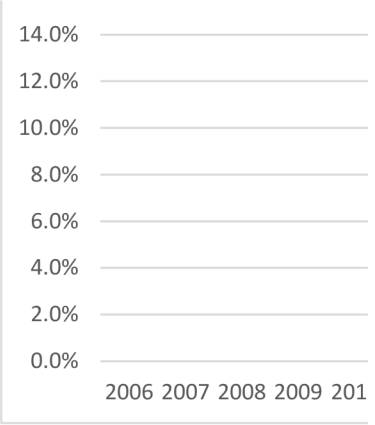
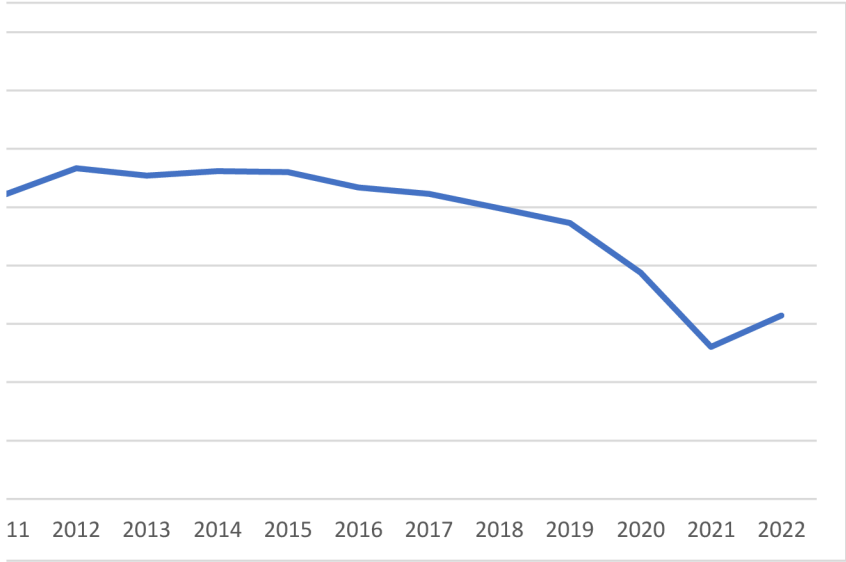
| | | | |
|------|-------|-------|-------|
| 2021 | 4.1 | 4.275 | 3.699 |
| 2020 | 3.975 | 4.146 | 3.578 |
| 2019 | 3.994 | 4.181 | 3.559 |
| 2018 | 3.88 | 4.075 | 3.432 |
| 2017 | 3.771 | 3.964 | 3.33 |
| 2016 | 3.703 | 3.898 | 3.258 |
| 2015 | 3.612 | 3.81 | 3.161 |
| 2014 | 3.527 | 3.728 | 3.075 |
| 2013 | 3.449 | 3.645 | 3.007 |
| 2012 | 3.391 | 3.595 | 2.925 |
| 2011 | 3.311 | 3.508 | 2.861 |
| 2010 | 3.227 | 3.416 | 2.791 |
| 2009 | 3.141 | 3.32 | 2.729 |
| 2008 | 3.103 | 3.294 | 2.661 |
| 2007 | 3.023 | 3.211 | 2.59 |
| 2006 | 2.95 | 3.138 | 2.522 |
| 2005 | 2.901 | 3.088 | 2.475 |
| 2004 | 2.846 | 3.034 | 2.421 |
| 2003 | 2.783 | 2.972 | 2.359 |



| Germany % | Average wage | Men | Women | | |
|------------|--------------|-----------|-----------|-----------|-----|
| 2006 18.5% | 2009 | 3,141 EUR | 3,320 EUR | 2,729 EUR | 22% |
| 2007 17.0% | 2010 | 3,227 EUR | 3,416 EUR | 2,791 EUR | 22% |
| 2008 17.0% | 2011 | 3,311 EUR | 3,508 EUR | 2,861 EUR | 23% |
| 2009 17.0% | 2012 | 3,391 EUR | 3,595 EUR | 2,925 EUR | 23% |
| 2010 16.7% | 2013 | 3,449 EUR | 3,645 EUR | 3,007 EUR | 21% |
| 2011 16.9% | 2014 | 3,527 EUR | 3,728 EUR | 3,075 EUR | 21% |
| 2012 16.3% | 2015 | 3,612 EUR | 3,810 EUR | 3,161 EUR | 21% |
| 2013 14.3% | 2016 | 3,703 EUR | 3,898 EUR | 3,258 EUR | 20% |
| 2014 17.2% | 2017 | 3,771 EUR | 3,964 EUR | 3,330 EUR | 19% |
| 2015 15.8% | 2018 | 3,880 EUR | 4,075 EUR | 3,432 EUR | 19% |

Název grafu

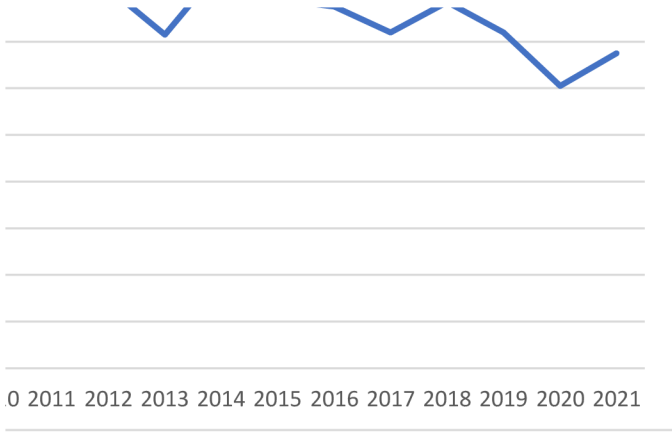






<http://data.oecd.org/earnwage/gender-wage-gap.htm>





| Column1 | 2003 | 2004 | 2005 | 2006 | 2007 | 2008 | 2009 | 2010 |
|-------------|---|-----------|-----------|-----------|-----------|-----------|-----------|-----------|
| 1. decil | 9,700 Kč | 10,140 Kč | 10,561 Kč | 11,022 Kč | 11,901 Kč | 12,666 Kč | 12,491 Kč | 12,607 Kč |
| median | 16,458 Kč | 17,333 Kč | 18,140 Kč | 18,967 Kč | 20,402 Kč | 21,881 Kč | 21,700 Kč | 22,207 Kč |
| 9.decil | 30,439 Kč | 31,880 Kč | 33,811 Kč | 35,776 Kč | 38,234 Kč | 40,988 Kč | 41,719 Kč | 42,536 Kč |
| CZE | https://www.mpsv.cz/web/cz/archiv-publikaci-ispv | | | | | | | |
| 90/10 ratio | 3.1380 | 3.1440 | 3.2015 | 3 Kč | 3 Kč | 3 Kč | 3 Kč | 3 Kč |

DEU

| | 2005 | 2006 | 2007 | 2008 | 2009 | 2010 | 2011 | 2012 |
|--------|------|------|------|------|------|------|------|------|
| P50/10 | 1.83 | 1.88 | 1.82 | 1.79 | 1.86 | 1.87 | 1.87 | 1.81 |
| P90/50 | 1.72 | 1.78 | 1.78 | 1.78 | 1.78 | 1.79 | 1.85 | 1.82 |
| P90/10 | 3.15 | 3.36 | 3.23 | 3.2 | 3.31 | 3.33 | 3.47 | 3.28 |

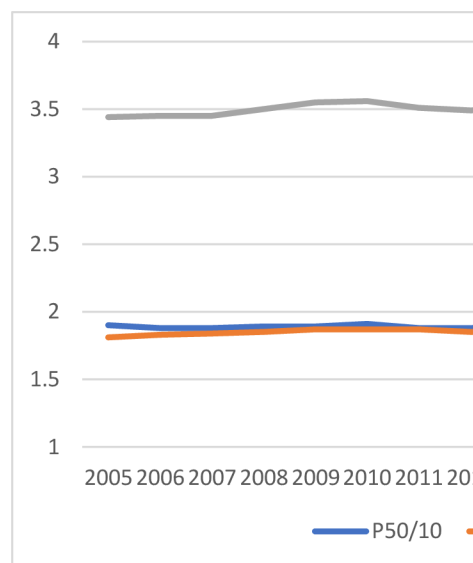
CZE

| | 2005 | 2006 | 2007 | 2008 | 2009 | 2010 | 2011 | 2012 |
|--------|------|------|------|------|------|------|------|------|
| P50/10 | 1.9 | 1.88 | 1.88 | 1.89 | 1.89 | 1.91 | 1.88 | 1.88 |
| P90/50 | 1.81 | 1.83 | 1.84 | 1.85 | 1.87 | 1.87 | 1.87 | 1.85 |
| P90/10 | 3.44 | 3.45 | 3.45 | 3.5 | 3.55 | 3.56 | 3.51 | 3.49 |

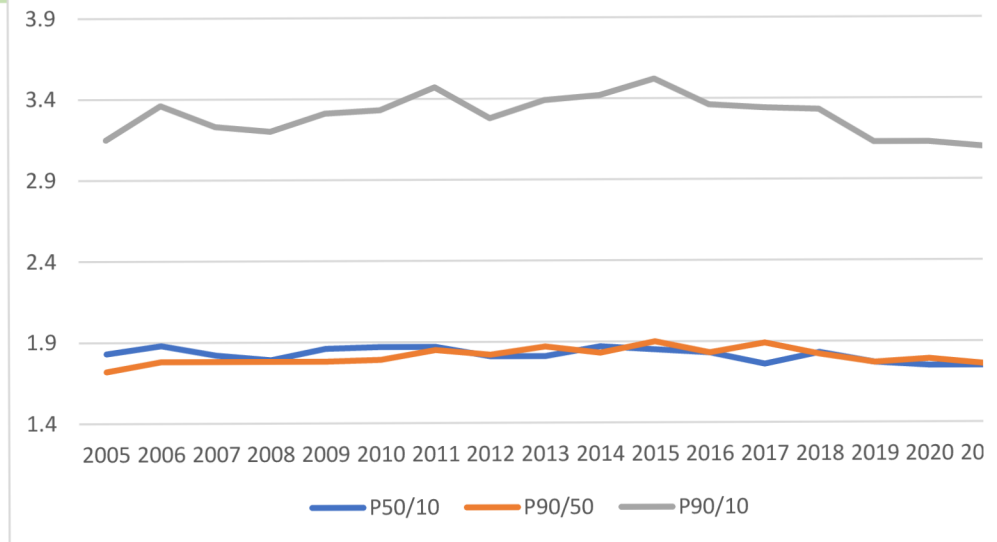
| 2011 | 2012 | 2013 | 2014 | 2015 | 2016 | 2017 | 2018 | 2019 |
|-----------|-----------|-----------|-----------|-----------|-----------|-----------|-----------|-----------|
| 14,277 Kč | 14,372 Kč | 14,204 Kč | 14,629 Kč | 15,239 Kč | 16,116 Kč | 17,894 Kč | 20,279 Kč | 22,366 Kč |
| 23,838 Kč | 24,305 Kč | 24,563 Kč | 25,393 Kč | 26,338 Kč | 27,723 Kč | 29,842 Kč | 33,029 Kč | 36,433 Kč |
| 36,692 Kč | 37,123 Kč | 37,661 Kč | 38,755 Kč | 40,605 Kč | 42,961 Kč | 46,572 Kč | 51,433 Kč | 55,680 Kč |
| | | | | | | | | |
| 3 Kč | 3 Kč | 3 Kč | 3 Kč | 3 Kč | 3 Kč | 3 Kč | 3 Kč | 2 Kč |

| 2013 | 2014 | 2015 | 2016 | 2017 | 2018 | 2019 | 2020 | 2021 |
|------|------|------|------|------|------|------|------|------|
| 1.81 | 1.87 | 1.85 | 1.83 | 1.76 | 1.83 | 1.77 | 1.75 | 1.75 |
| 1.87 | 1.83 | 1.9 | 1.83 | 1.89 | 1.82 | 1.77 | 1.79 | 1.76 |
| 3.39 | 3.42 | 3.52 | 3.36 | 3.34 | 3.33 | 3.13 | 3.13 | 3.1 |

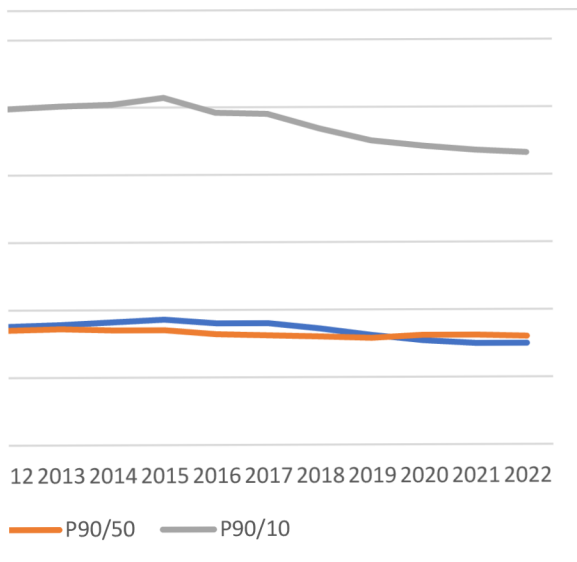
| 2013 | 2014 | 2015 | 2016 | 2017 | 2018 | 2019 | 2020 | 2021 |
|------|------|------|------|------|------|------|------|------|
| 1.89 | 1.91 | 1.93 | 1.9 | 1.9 | 1.86 | 1.81 | 1.77 | 1.75 |
| 1.86 | 1.85 | 1.85 | 1.82 | 1.81 | 1.8 | 1.79 | 1.81 | 1.81 |
| 3.51 | 3.52 | 3.57 | 3.46 | 3.45 | 3.34 | 3.25 | 3.21 | 3.18 |



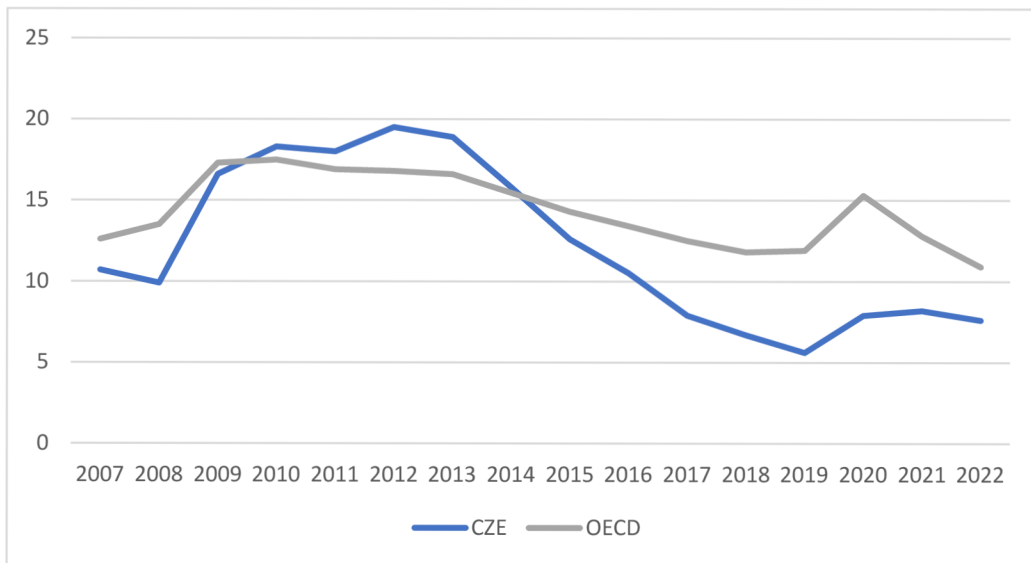
| 2020 | 2021 | 2022 | Column2 |
|-----------|-----------|-----------|---------|
| 25,228 Kč | 26,219 Kč | 26,938 Kč | |
| 39,900 Kč | 41,921 Kč | 42,245 Kč | |
| 61,312 Kč | 64,757 Kč | 64,786 Kč | |
| | | | |
| 2 Kč | 2 Kč | 2 Kč | |



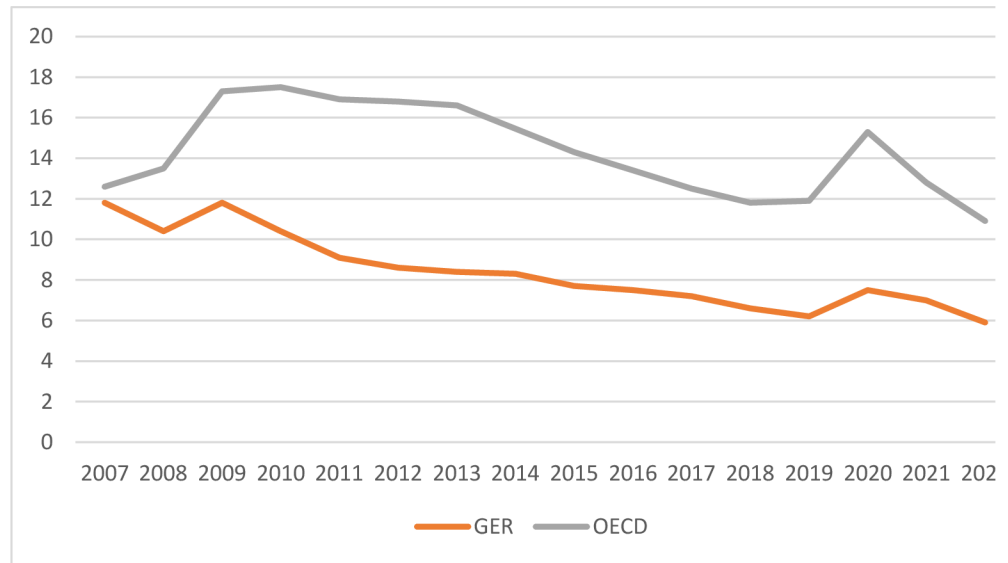
2022
1.75
1.8
3.16



| | 2007 | 2008 | 2009 | 2010 | 2011 | 2012 | 2013 | 2014 |
|------|------|------|------|------|------|------|------|-------|
| CZE | 10.7 | 9.9 | 16.6 | 18.3 | 18 | 19.5 | 18.9 | 15.8 |
| GER | 11.8 | 10.4 | 11.8 | 10.4 | 9.1 | 8.6 | 8.4 | 8.3 |
| OECD | 12.6 | 13.5 | 17.3 | 17.5 | 16.9 | 16.8 | 16.6 | 15.45 |



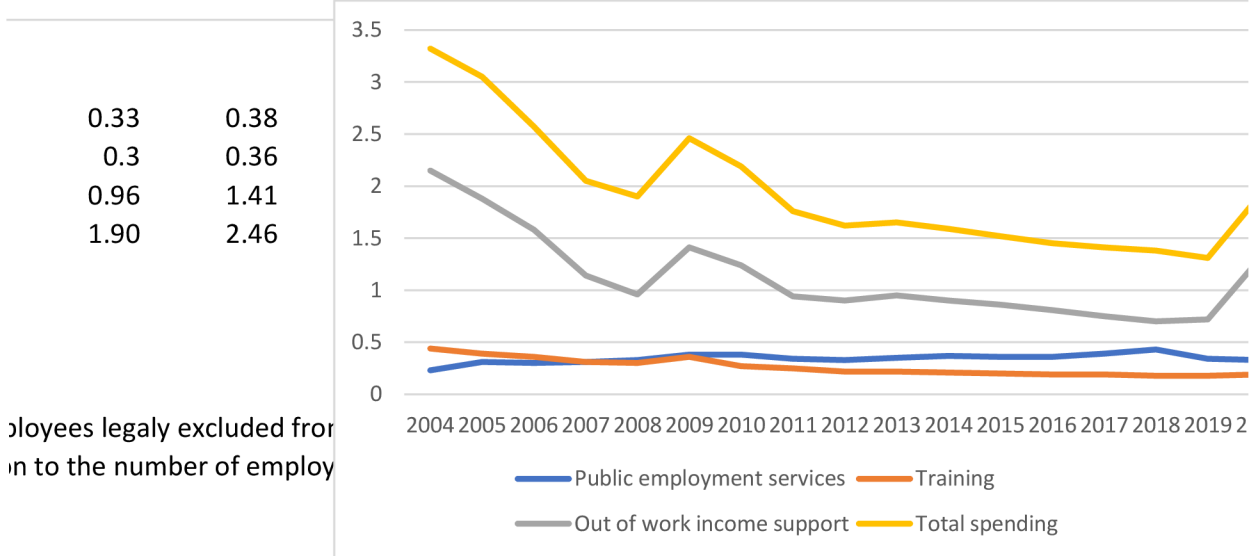
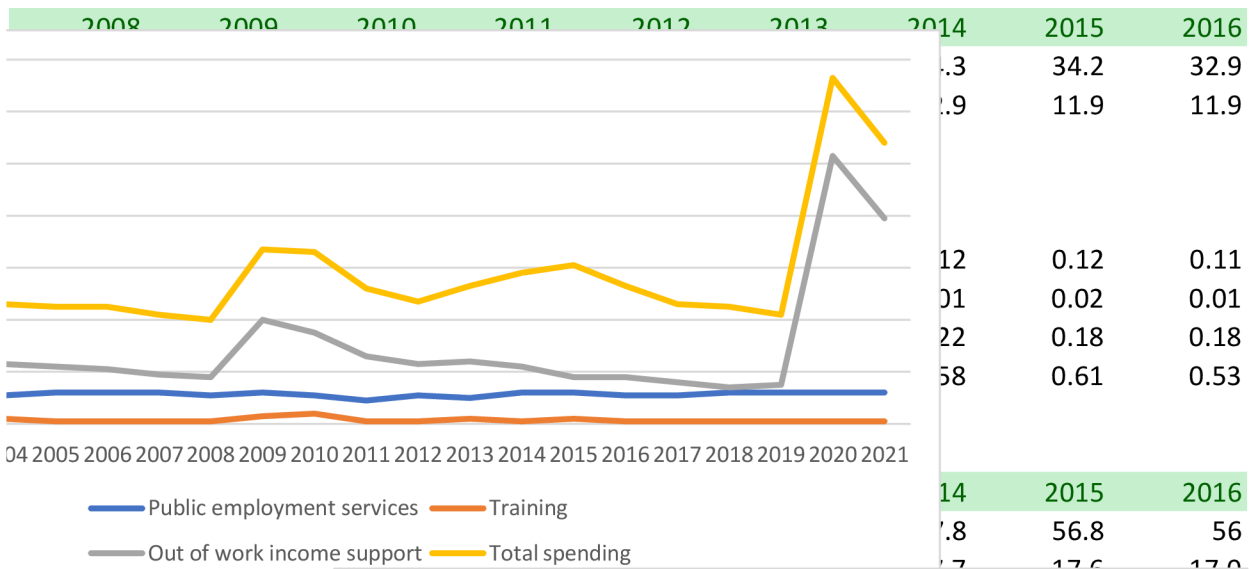
| 2015 | 2016 | 2017 | 2018 | 2019 | 2020 | 2021 | 2022 | |
|------|------|------|------|------|------|------|------|----------|
| 12.6 | 10.5 | 7.9 | 6.7 | 5.6 | 7.9 | 8.2 | 7.6 | 12.16875 |
| 7.7 | 7.5 | 7.2 | 6.6 | 6.2 | 7.5 | 7 | 5.9 | 8.4 |
| 14.3 | 13.4 | 12.5 | 11.8 | 11.9 | 15.3 | 12.8 | 10.9 | 14.34688 |



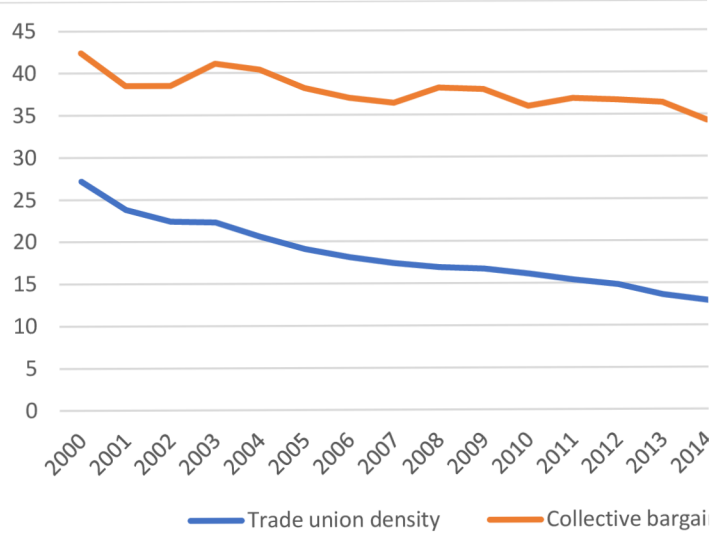
| Cze | 2000 | 2001 | 2002 | 2003 | 2004 | 2005 | 2006 | 2007 |
|--------------------------------|------|------|------|------|------|------|------|------|
| Collective bargaining coverage | 42.4 | 38.5 | 38.5 | 41.1 | 40.4 | 38.2 | 37.0 | 1.4 |
| Trade union density | 27.2 | 23.8 | 22.4 | 22.3 | 20.6 | 19.1 | 18.1 | 1.2 |
| expenditure % of gdp | | | | | | | | |
| Public employment services | | | | | 0.11 | 0.12 | 0.12 | 0.6 |
| Training | | | | | 0.02 | 0.01 | 0.01 | 0.4 |
| Out of work income support | | | | | 0.23 | 0.22 | 0.21 | 0.2 |
| Total spending | | | | | 0.46 | 0.45 | 0.45 | 0.2 |
| Ger | | | | | | | | |
| Collective bargaining coverage | 67.8 | 68.8 | 67.8 | 67.6 | 65.8 | 64.9 | 63.3 | |
| Trade union density | 24.6 | 23.7 | 23.5 | 23.0 | 22.2 | 21.5 | 20.6 | |
| expenditure % of gdp | | | | | | | | |
| Public employment services | | | | | 0.23 | 0.31 | 0.3 | 0.31 |
| Training | | | | | 0.44 | 0.39 | 0.36 | 0.31 |
| Out of work income support | | | | | 2.15 | 1.88 | 1.58 | 1.14 |
| Total spending | | | | | 3.32 | 3.05 | 2.57 | 2.05 |

collective bargaining coverage
trade union density

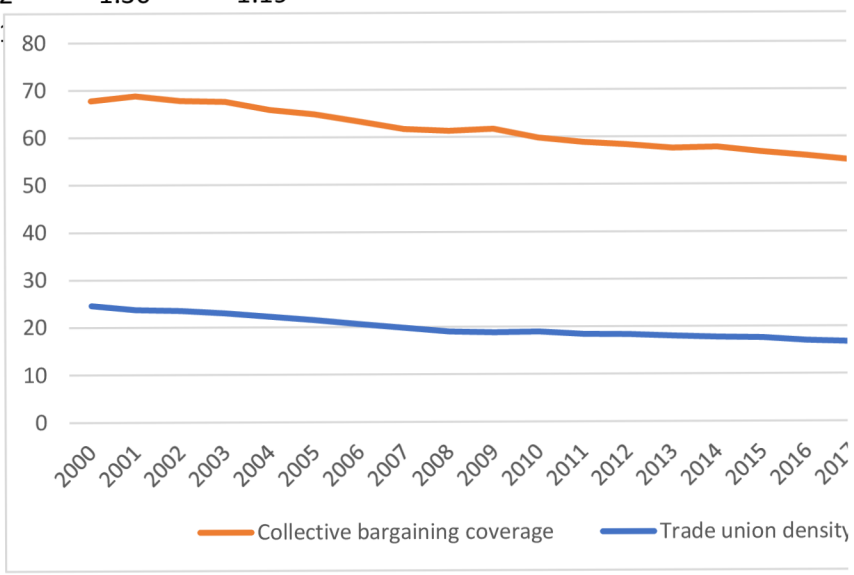
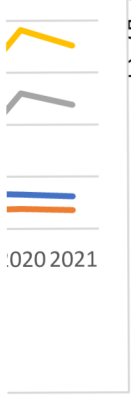
number of total employees - number of employees
number of net union members as a proportion

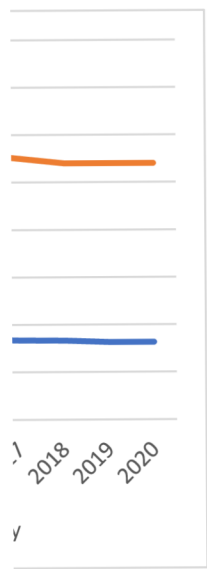
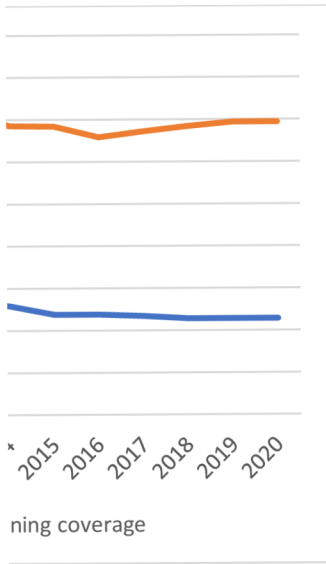


| 2017 | 2018 | 2019 | 2020 |
|------|------|------|------|
| 33.6 | 34.2 | 34.7 | 34.1 |
| 11.7 | 11.4 | 11.4 | 11.1 |
| 0.11 | 0.12 | 0.12 | 0.11 |
| 0.01 | 0.01 | 0.01 | 0.01 |
| 0.16 | 0.14 | 0.15 | 1.0 |
| 0.46 | 0.45 | 0.42 | 1.3 |



| 2017 | 2018 | 2019 | 2020 |
|------|------|------|------|
| 55 | 54 | 54 | 55 |
| 16.7 | 16.6 | 16.3 | 16.3 |
| 0.39 | 0.43 | 0.34 | 0.33 |
| 0.19 | 0.18 | 0.18 | 0.19 |
| 0.75 | 0.70 | 0.72 | 1.30 |
| 1.1 | 1.38 | 1.3 | 1.19 |





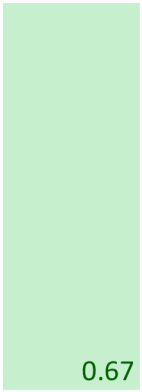
| | cze | | | | |
|------|----------|---------|----------|---------------|--------|
| | industry | agri | service | manufacturing | |
| cze | 1921.1 | 132.9 | 3159.9 | 1358.2 | 6572.1 |
| | 29% | 2% | 48% | 21% | 1 |
| ger | 11336.9 | 513.7 | 29547.4 | 8200 | 49598 |
| | 23% | 1% | 60% | 17% | 1 |
| OECD | 135839.5 | 28845.6 | 460535.8 | | |

CZE

| | 2002 | 2003 | 2004 | 2005 | 2006 | 2007 | 2008 |
|--------------------|------|-------|------|------|------|-------|-------|
| gini | 26.6 | 27.05 | 27.5 | 26.9 | 26.7 | 26 | 26.3 |
| P90/10 | | | | 3.44 | 3.45 | 3.45 | 3.5 |
| gender disparity | | | | | | 32.57 | 32.90 |
| stocks | | 65 | 55 | 39 | 32 | 32 | 28 |
| youth employment % | | | | | | 10.7 | 9.9 |
| Union density | 22.4 | 22.3 | 20.6 | 19.1 | 18.1 | 17.4 | 16.9 |
| Safety nets | | | 0.46 | 0.45 | 0.45 | 0.42 | 0.40 |

| | | | | | | |
|------|------|------|----------|----|------|------|
| 2009 | 26.2 | 3.55 | 0.336352 | 25 | 16.6 | 16.7 |
| 2010 | 26.6 | 3.56 | 0.332039 | 27 | 18.3 | 16.1 |

| 2009 | 2010 | 2011 | 2012 | 2013 | 2014 | 2015 | 2016 | 2017 |
|-------|-------|-------|-------|-------|-------|-------|-------|-------|
| 26.2 | 26.6 | 26.4 | 26.1 | 26.5 | 25.9 | 25.9 | 25.4 | 24.9 |
| 3.55 | 3.56 | 3.51 | 3.49 | 3.51 | 3.52 | 3.57 | 3.46 | 3.45 |
| 35.05 | 33.64 | 33.20 | 26.11 | 28.35 | 27.70 | 28.09 | 28.01 | 26.69 |
| 25 | 27 | 26 | 28 | 26 | 23 | 25 | 25 | 23 |
| 16.6 | 18.3 | 18 | 19.5 | 18.9 | 15.8 | 12.6 | 10.5 | 7.9 |
| 16.7 | 16.1 | 15.4 | 14.8 | 13.6 | 12.9 | 11.9 | 11.9 | 11.7 |
| 0.67 | 0.66 | 0.52 | 0.47 | 0.53 | 0.58 | 0.61 | 0.53 | 0.46 |



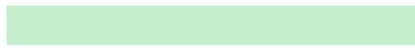
0.67

0.66

| 2018 | 2019 | 2020 | 2021 | 2022 | 2023 |
|-------|-------|-------|-------|-------|-------|
| 25 | 25.3 | 26.2 | | | |
| 3.34 | 3.25 | 3.21 | 3.18 | 3.16 | |
| 26.14 | 24.91 | 23.64 | 19.39 | 13.02 | 15.71 |
| 53 | 54 | 55 | 55 | 59 | 61 |
| 6.7 | 5.6 | 7.9 | 8.2 | 7.6 | |
| 11.4 | 11.4 | 11.4 | | | |
| 0.45 | 0.42 | 1.33 | 1.08 | | |

| Year | Gini | P90/10 | Gender | Stocks | Youth uner | Union dens | Safety nets |
|------|------|--------|----------|--------|------------|------------|-------------|
| 2007 | 26 | 3.45 | 32.57187 | 32 | 10.7 | 17.4 | 0.42 |
| 2008 | 26.3 | 3.5 | 32.89983 | 28 | 9.9 | 16.9 | 0.4 |
| 2009 | 26.2 | 3.55 | 35.04718 | 25 | 16.6 | 16.7 | 0.67 |
| 2010 | 26.6 | 3.56 | 33.63523 | 27 | 18.3 | 16.1 | 0.66 |
| 2011 | 26.4 | 3.51 | 33.20392 | 26 | 18 | 15.4 | 0.52 |
| 2012 | 26.1 | 3.49 | 26.10657 | 28 | 19.5 | 14.8 | 0.47 |
| 2013 | 26.5 | 3.51 | 28.34726 | 26 | 18.9 | 13.6 | 0.53 |
| 2014 | 25.9 | 3.52 | 27.70469 | 23 | 15.8 | 12.9 | 0.58 |
| 2015 | 25.9 | 3.57 | 28.0912 | 25 | 12.6 | 11.9 | 0.61 |
| 2016 | 25.4 | 3.46 | 28.00697 | 25 | 10.5 | 11.9 | 0.53 |
| 2017 | 24.9 | 3.45 | 26.69406 | 23 | 7.9 | 11.7 | 0.46 |
| 2018 | 25 | 3.34 | 26.13749 | 53 | 6.7 | 11.4 | 0.45 |
| 2019 | 25.3 | 3.25 | 24.91309 | 54 | 5.6 | 11.4 | 0.42 |
| 2020 | 26.2 | 3.21 | 23.63772 | 55 | 7.9 | 11.4 | 1.33 |

| Year | Gini | P90/10 | Gender | Stocks | Youth uner | Union dens | Safety nets |
|------|------|--------|--------|--------|------------|------------|-------------|
| 2011 | 26.4 | 3.51 | 33.20 | 26 | 18 | 15.4 | 0.52 |
| 2012 | 26.1 | 3.49 | 26.11 | 28 | 19.5 | 14.8 | 0.47 |
| 2013 | 26.5 | 3.51 | 28.35 | 26 | 18.9 | 13.6 | 0.53 |
| 2014 | 25.9 | 3.52 | 27.70 | 23 | 15.8 | 12.9 | 0.58 |
| 2015 | 25.9 | 3.57 | 28.09 | 25 | 12.6 | 11.9 | 0.61 |
| 2016 | 25.4 | 3.46 | 28.01 | 25 | 10.5 | 11.9 | 0.53 |
| 2017 | 24.9 | 3.45 | 26.69 | 23 | 7.9 | 11.7 | 0.46 |
| 2018 | 25 | 3.34 | 26.14 | 53 | 6.7 | 11.4 | 0.45 |
| 2019 | 25.3 | 3.25 | 24.91 | 54 | 5.6 | 11.4 | 0.42 |
| 2020 | 26.2 | 3.21 | 23.64 | 55 | 7.9 | 11.4 | 1.33 |



| Year | Gini | P90/10 | Gender | Stocks | Youth uner | Union dens | Safety nets |
|------|------|--------|--------|--------|------------|------------|-------------|
| 2010 | 30.3 | 3.33 | 22.39 | 10.4 | 18.9 | 2.19 | 1240 |
| 2011 | 30.7 | 3.47 | 22.61 | 9.1 | 18.4 | 1.76 | 1142 |
| 2012 | 31.1 | 3.28 | 22.91 | 8.6 | 18.3 | 1.62 | 1176 |
| 2013 | 31.5 | 3.39 | 21.22 | 8.4 | 18.0 | 1.65 | 1052 |
| 2014 | 30.9 | 3.42 | 21.24 | 8.3 | 17.7 | 1.59 | 994 |
| 2015 | 31.4 | 3.52 | 20.53 | 7.7 | 17.6 | 1.52 | 922 |
| 2016 | 31.4 | 3.36 | 19.64 | 7.5 | 17.0 | 1.45 | 858 |
| 2017 | 31.9 | 3.34 | 19.04 | 7.2 | 16.7 | 1.41 | 848 |
| 2018 | 31.8 | 3.33 | 18.74 | 6.6 | 16.6 | 1.38 | 838 |
| 2019 | 31.7 | 3.13 | 17.48 | 6.2 | 16.3 | 1.31 | 852 |
| 2020 | 31.7 | 3.13 | 15.87 | 7.5 | 16.3 | 1.91 | 844 |

| Year | Gini | P90/10 | Gender | Stocks | Youth unemployment |
|------|------|--------|--------|--------|--------------------|
| 2011 | 30.7 | 3.47 | 22.61 | 1142 | 9.1 |
| 2012 | 31.1 | 3.28 | 22.91 | 1176 | 8.6 |
| 2013 | 31.5 | 3.39 | 21.22 | 1052 | 8.4 |
| 2014 | 30.9 | 3.42 | 21.24 | 994 | 8.3 |
| 2015 | 31.4 | 3.52 | 20.53 | 922 | 7.7 |
| 2016 | 31.4 | 3.36 | 19.64 | 858 | 7.5 |
| 2017 | 31.9 | 3.34 | 19.04 | 848 | 7.2 |
| 2018 | 31.8 | 3.33 | 18.74 | 838 | 6.6 |
| 2019 | 31.7 | 3.13 | 17.48 | 852 | 6.2 |
| 2020 | 31.7 | 3.13 | 15.87 | 844 | 7.5 |

Union density

Safety nets

| | |
|------|------|
| 18.4 | 1.76 |
| 18.3 | 1.62 |
| 18.0 | 1.65 |
| 17.7 | 1.59 |
| 17.6 | 1.52 |
| 17.0 | 1.45 |
| 16.7 | 1.41 |
| 16.6 | 1.38 |
| 16.3 | 1.31 |
| 16.3 | 1.91 |