

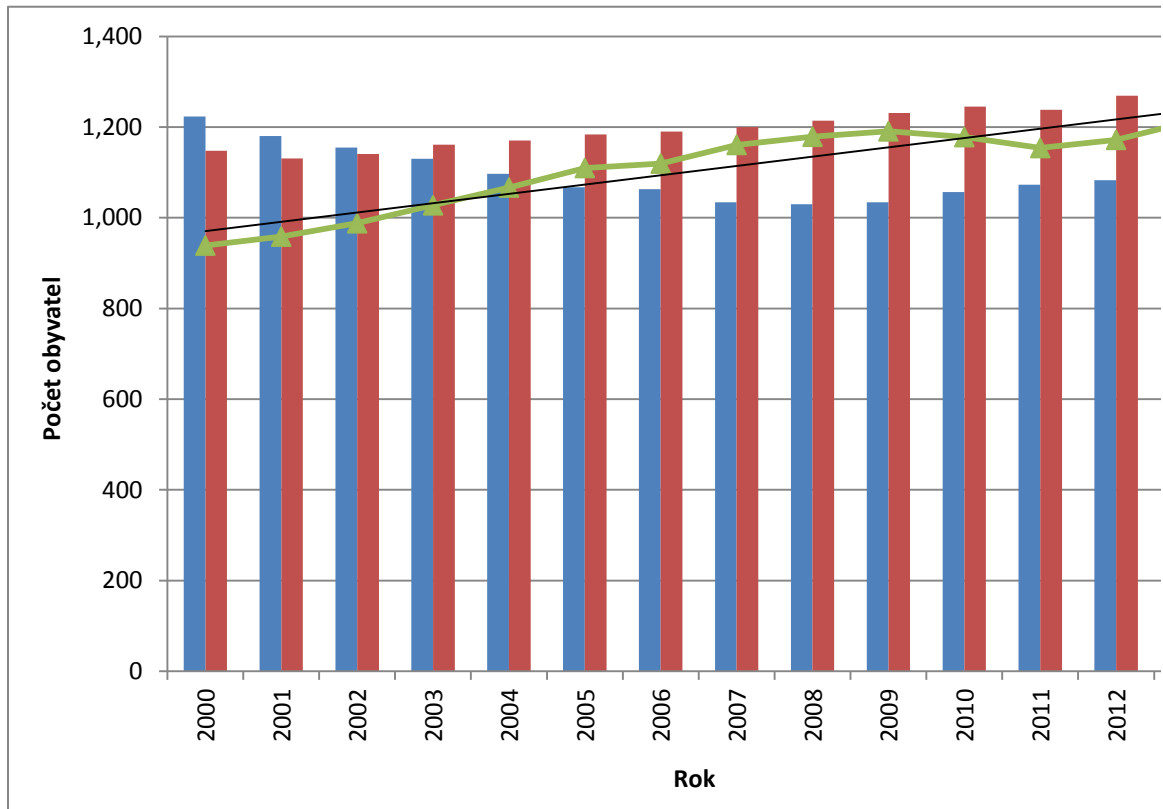
Rok	Přistěhovalí	Vystěhovalí	Saldo migrace	Objem migrace	Index atraktivity
2000	107	91	16	198	0.08
2001	125	100	25	225	0.11
2002	112	113	-1	225	0.00
2003	131	90	41	221	0.19
2004	150	113	37	263	0.14
2005	132	95	37	227	0.16
2006	199	139	60	338	0.18
2007	157	122	35	279	0.13
2008	159	115	44	274	0.16
2009	156	117	39	273	0.14
2010	193	119	74	312	0.24
2011	148	110	38	258	0.15
2012	157	120	37	277	0.13
2013	163	129	34	292	0.12
Suma	2,089	1,573	516	3,662	-

Rok	0–14 let (%)	15–64 let (%)	65 a více let (%)	Index stáří (%)	Rok
2000	17.5	66.0	16.5	93.9	2014
2001	17.0	66.7	16.3	95.8	2015
2002	16.7	66.9	16.5	98.8	2016
2003	16.2	67.1	16.7	102.7	2017
2004	15.7	67.6	16.7	106.7	2018
2005	15.2	68.0	16.9	111.0	2019
2006	15.0	68.2	16.8	111.9	2020
2007	14.5	68.6	16.9	116.1	
2008	14.4	68.7	17.0	117.9	
2009	14.3	68.6	17.1	119.1	
2010	14.5	68.4	17.1	117.8	
2011	14.7	68.4	16.9	115.4	
2012	14.7	68.0	17.3	117.2	
2013	14.6	67.7	17.7	121.3	

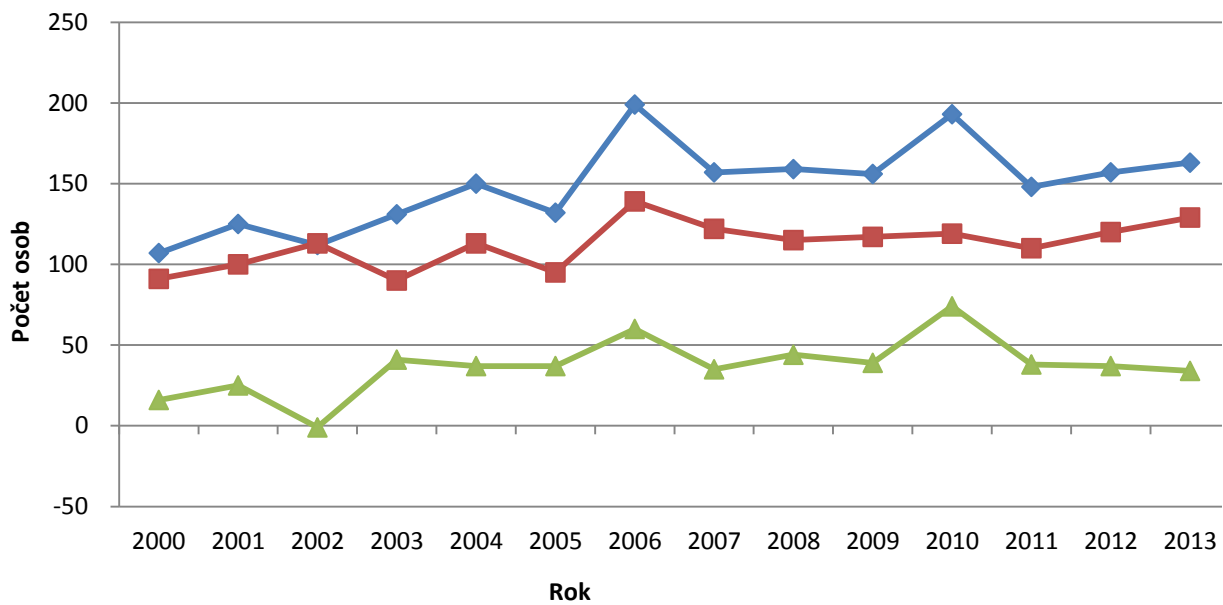
i	rok	y_{ij}	t_{ij}	$y_{ij} * t_{ij}$	t^2
1	2000	93.9	-6.5	-610.1390025	42.3
2	2001	95.8	-5.5	-527.1610169	30.3
3	2002	98.8	-4.5	-444.5454545	20.3
4	2003	102.7	-3.5	-359.6017699	12.3
5	2004	106.7	-2.5	-266.6362808	6.25
6	2005	111.0	-1.5	-166.447985	2.25
7	2006	111.9	-0.5	-55.97365945	0.25
8	2007	116.1	0.5	58.0270793	0.25
9	2008	117.9	1.5	176.7961165	2.25
10	2009	119.1	2.5	297.6305609	6.25
11	2010	117.8	3.5	412.2516556	12.3

12	2011	115.4	4.5	519.1985089	20.3
13	2012	117.2	5.5	644.4598338	30.3
14	2013	121.3	6.5	788.4651163	42.3
suma	x	1,545	0	466.3237022	228

15
16
17
18
19
20



Rok	Absolutně			Řetězový index	R
	Muži	Ženy	Celkem		Muži
2000	3,441	3,528	6,974	100	49.4
2001	3,430	3,513	6,942	99.5	49.4
2002	3,433	3,504	6,931	99.8	49.5
2003	3,419	3,506	6,960	100.4	49.1
2004	3,435	3,543	6,989	100.4	49.1
2005	3,438	3,550	7,026	100.5	48.9
2006	3,468	3,563	7,075	100.7	49
2007	3,510	3,577	7,110	100.5	49.4
2008	3,532	3,604	7,162	100.7	49.3
2009	3,574	3,640	7,210	100.7	49.6
2010	3,607	3,647	7,289	101.1	49.5
2011	3,642	3,638	7,313	100.3	49.8
2012	3,642	3,683	7,354	100.6	49.5
2013	3,649	3,675	7,365	100.2	49.5



Predikce	
Index stáří (%)	
140.1	
142.2	
144.2	
146.3	
148.3	
150.4	
138.1	

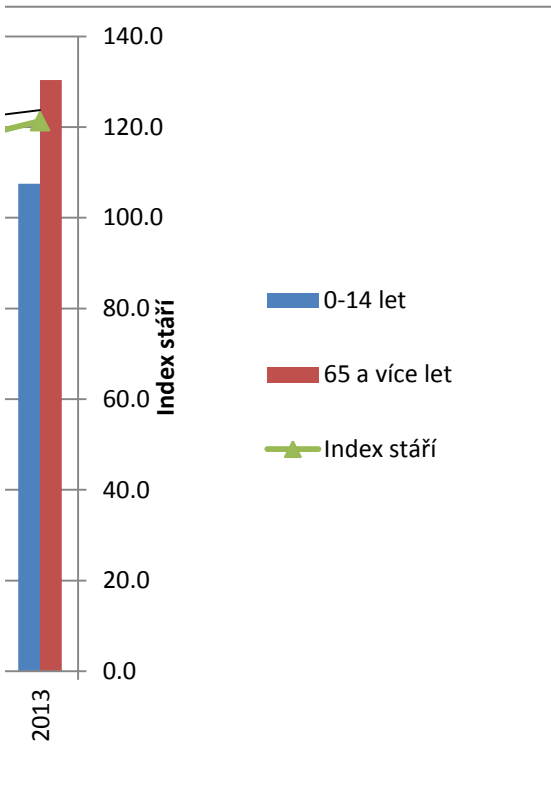
Rok	Celkem	0–14 let
2000	6,974	1,223
2001	6,942	1,180
2002	6,931	1,155
2003	6,960	1,130
2004	6,989	1,097
2005	7,026	1,067
2006	7,075	1,063
2007	7,110	1,034
2008	7,162	1,030
2009	7,210	1,034
2010	7,289	1,057
2011	7,313	1,073
2012	7,354	1,083
2013	7,365	1,075

T_{ij}	$y_{ij}/T_{ij} = l_j$
97.06391764	0.96706934
99.11369215	0.96704558
101.1634667	0.97651733
103.2132412	0.9954475
105.2630157	1.01321924
107.3127902	1.03403633
109.3625647	1.02363473
111.4123392	1.04166342
113.4621138	1.03879677
115.5118883	1.03064911
117.5616628	1.00190984

rok	t_{ij}	T_t
2014	14.5	140.1
2015	15.5	142.2
2016	16.5	144.2
2017	17.5	146.3
2018	18.5	148.3
2019	19.5	150.4
2020	13.5	138.1

119.6114373	0.96460212
121.6612118	0.96312139
123.7109863	0.98052994
1545.424328	x

b0 110.3875
b1 2.049775



relativně (%)		Predikce
Ženy	Rok	celkového stavu obyvatel
50.6	2014	7,400
50.6	2015	7,437
50.5	2016	7,474
50.9	2017	7,512
50.9	2018	7,549
51.1	2019	7,586
51	2020	7,623
50.6		
50.7		
50.4		
50.5		
50.2		
50.5		
50.5		

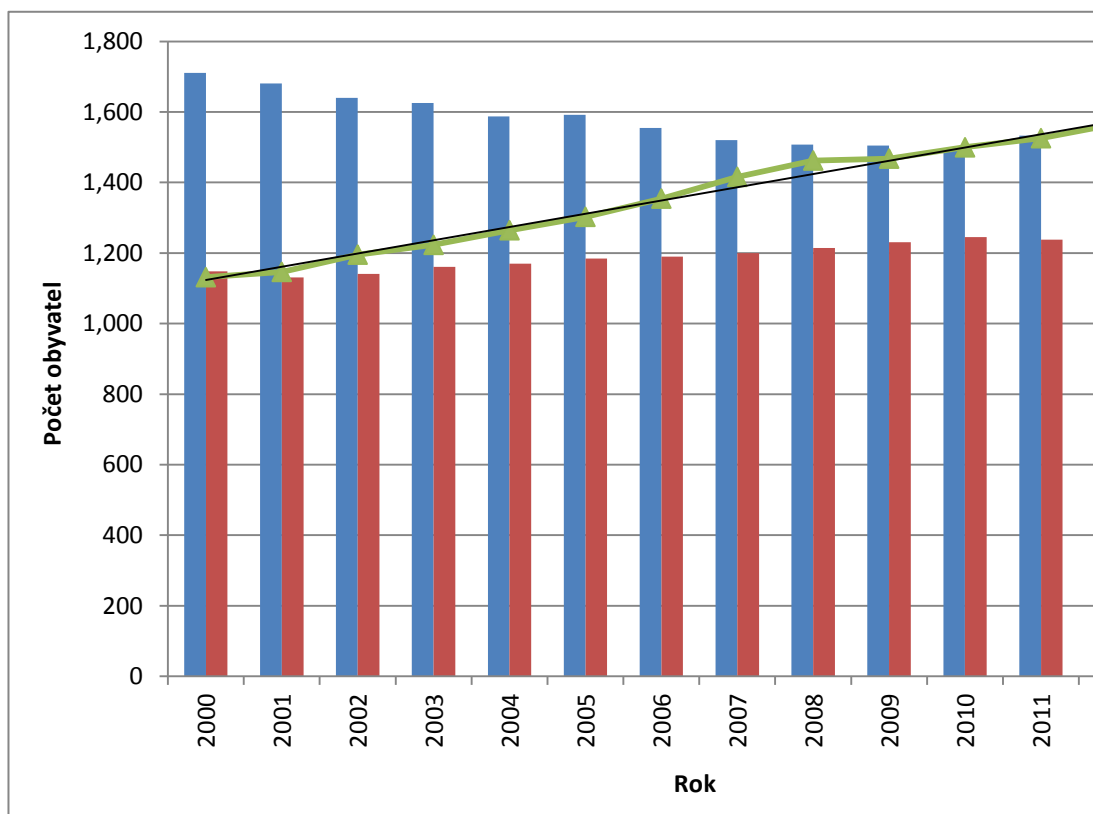
Rok	Přistěhovalí	Vystěhovalí	Saldo migrace	Objem migrace	Index atraktivity
2000	122	93	29	215	0.1
2001	156	109	47	265	0.2
2002	187	125	62	312	0.2
2003	258	178	80	436	0.2
2004	212	202	10	414	0.0
2005	301	160	141	461	0.3
2006	272	241	31	513	0.1
2007	236	254	-18	490	0.0
2008	209	171	38	380	0.1
2009	174	155	19	329	0.1
2010	153	198	-45	351	-0.1
2011	255	159	96	414	0.2
2012	165	208	-43	373	-0.1
2013	177	144	33	321	0.1
Suma	2,877	2,397	480	5,274	-

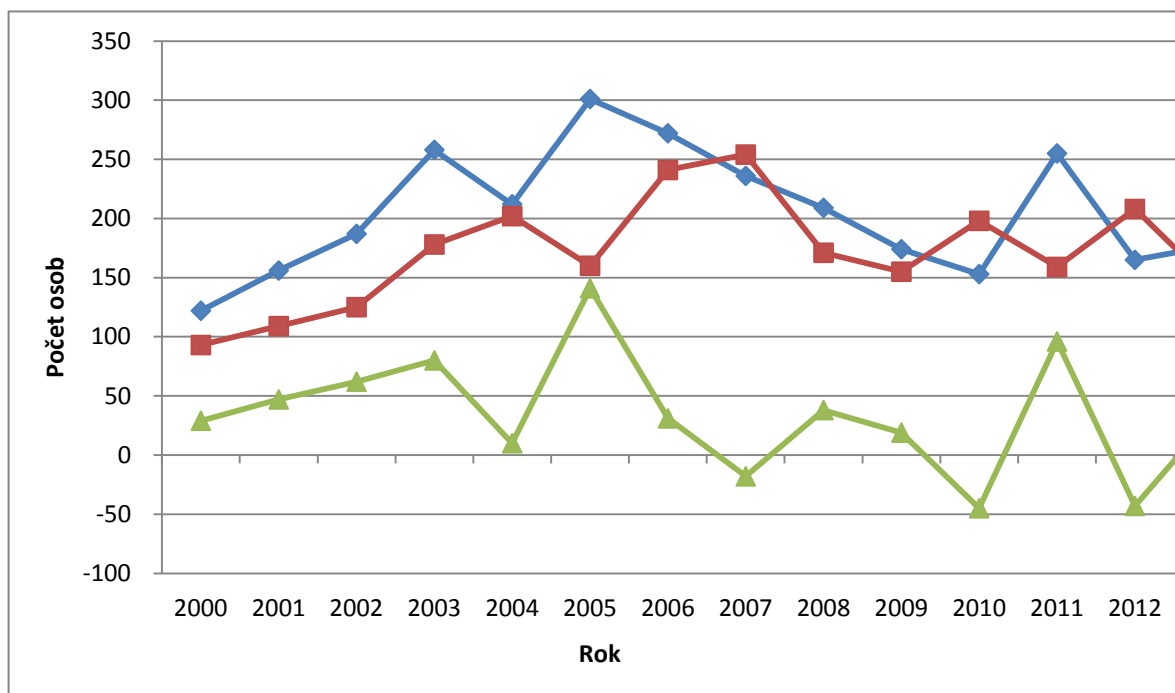
Rok	0–14 let (%)	15–64 let (%)	65 a více let (%)	Index stáří (%)
2000	17.2	67.6	15.2	88.0
2001	16.8	68.2	15.0	89.2
2002	16.3	68.5	15.2	93.0
2003	16.1	68.7	15.3	95.1
2004	15.7	68.8	15.5	98.4
2005	15.6	68.7	15.8	101.3
2006	15.2	68.8	16.0	105.3
2007	14.9	68.8	16.4	110.1
2008	14.7	68.6	16.7	113.7
2009	14.7	68.6	16.7	114.2
2010	14.7	68.3	17.1	116.6
2011	15.0	67.2	17.8	118.7
2012	15.0	66.7	18.3	121.8
2013	15.0	66.5	18.6	124.0

i	rok	y_{ij}	t_{ij}	$y_{ij} * t_{ij}$
1	2000	88.0	-6.5	-572.1215663
2	2001	89.2	-5.5	-490.4521118
3	2002	93.0	-4.5	-418.445122
4	2003	95.1	-3.5	-332.9846154
5	2004	98.4	-2.5	-245.9042218
6	2005	101.3	-1.5	-151.9786432
7	2006	105.3	-0.5	-52.66881029
8	2007	110.1	0.5	55.06578947
9	2008	113.7	1.5	170.6038487

10	2009	114.2	2.5	285.3820598
11	2010	116.6	3.5	408.2553476
12	2011	118.7	4.5	533.9530333
13	2012	121.8	5.5	670.0653595
14	2013	124.0	6.5	805.897772
suma	x	1,489	0	664.6681195

15
16
17
18
19
20





Predikce	
Rok	Index stáří (%)
2014	148.8
2015	151.7
2016	154.6
2017	157.5
2018	160.4
2019	163.4
2020	145.8

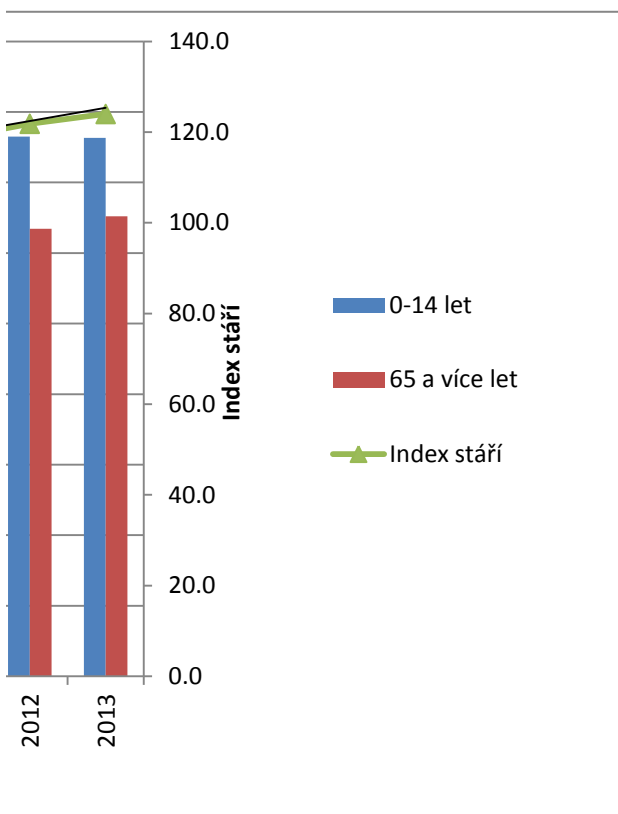
Rok	Celkem	0–14 let
2000	9,932	1,711
2001	10,012	1,681
2002	10,049	1,640
2003	10,121	1,625
2004	10,097	1,587
2005	10,229	1,592
2006	10,248	1,555
2007	10,222	1,520
2008	10,263	1,507
2009	10,262	1,505
2010	10,210	1,496
2011	10,220	1,533
2012	10,179	1,530
2013	10,195	1,526

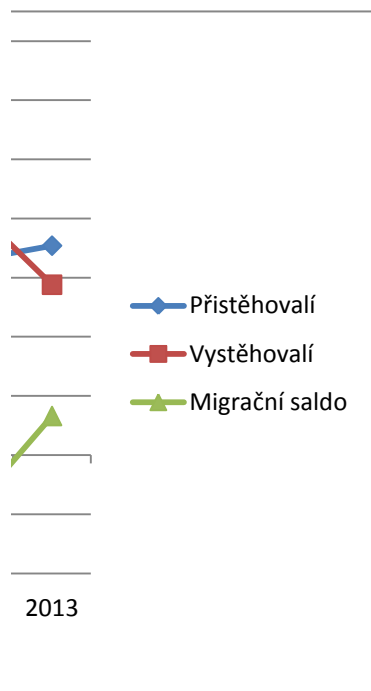
t^2	T_{ij}	$v_{ij}/T_{ij} = I_j$
42.25	87.40032084	1.007075
30.25	90.32193895	0.987281
20.25	93.24355706	0.997257
12.25	96.16517516	0.989323
6.25	99.08679327	0.992682
2.25	102.0084114	0.993243
0.25	104.9300295	1.003884
0.25	107.8516476	1.02114
2.25	110.7732657	1.026745

rok	t_{ij}	T_t
2014	14.5	148.8
2015	15.5	151.7
2016	16.5	154.6
2017	17.5	157.5
2018	18.5	160.4
2019	19.5	163.4
2020	13.5	145.8

6.25	113.6948838	1.004028
12.25	116.6165019	1.000239
20.25	119.53812	0.992623
30.25	122.4597381	0.994858
42.25	125.3813562	0.988857
227.5	1489.47174	x

b0 106.3908
b1 2.921618





15–64 let	65 +
6,715	1,506
6,832	1,499
6,884	1,525
6,950	1,546
6,949	1,561
7,024	1,613
7,055	1,638
7,028	1,674
7,042	1,714
7,039	1,718
6,969	1,745
6,868	1,819
6,785	1,864
6,777	1,892

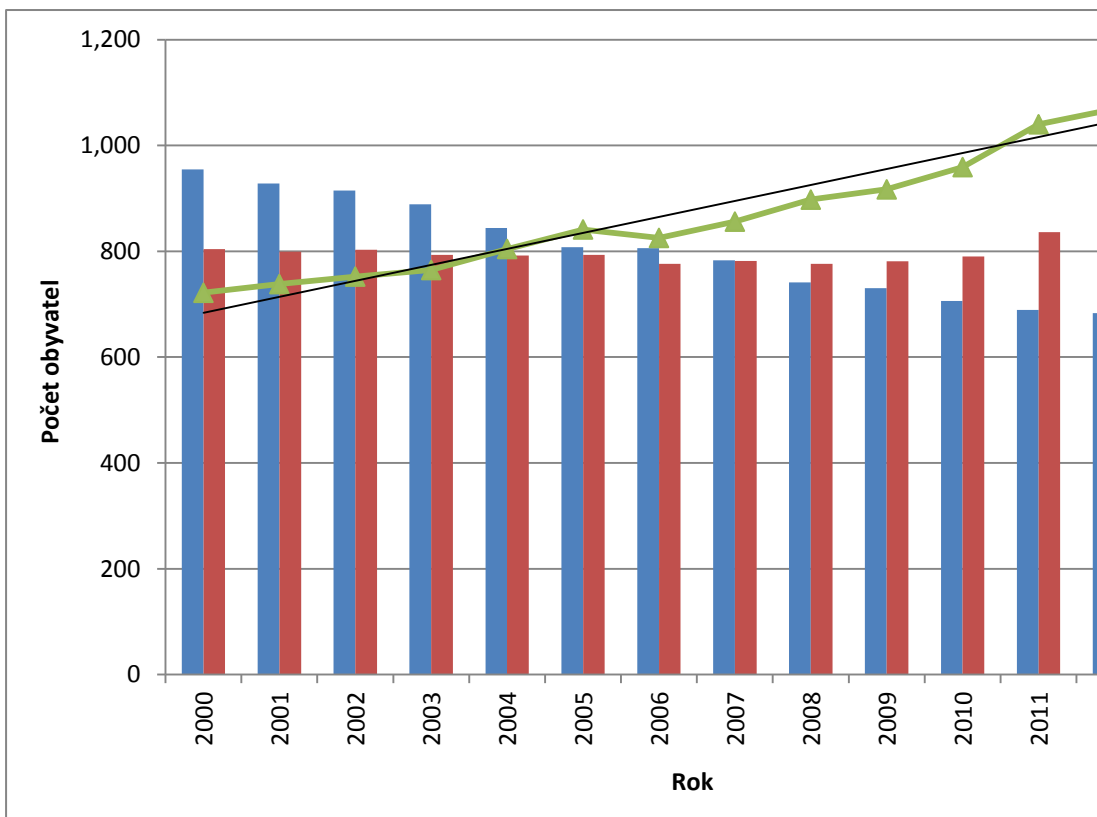
Rok	Přistěhovalí	Vystěhovalí	Saldo migrace	Objem migrace	Index atraktivity
2000	87	113	-26	200	-0.1
2001	78	117	-39	195	-0.2
2002	78	102	-24	180	-0.1
2003	84	123	-39	207	-0.2
2004	99	140	-41	239	-0.2
2005	102	134	-32	236	-0.1
2006	144	120	24	264	0.1
2007	104	127	-23	231	-0.1
2008	77	137	-60	214	-0.3
2009	76	94	-18	170	-0.1
2010	99	87	12	186	0.1
2011	79	80	-1	159	0.0
2012	120	117	3	237	0.0
2013	90	106	-16	196	-0.1
Suma	1,317	1,597	-280	2,914	-

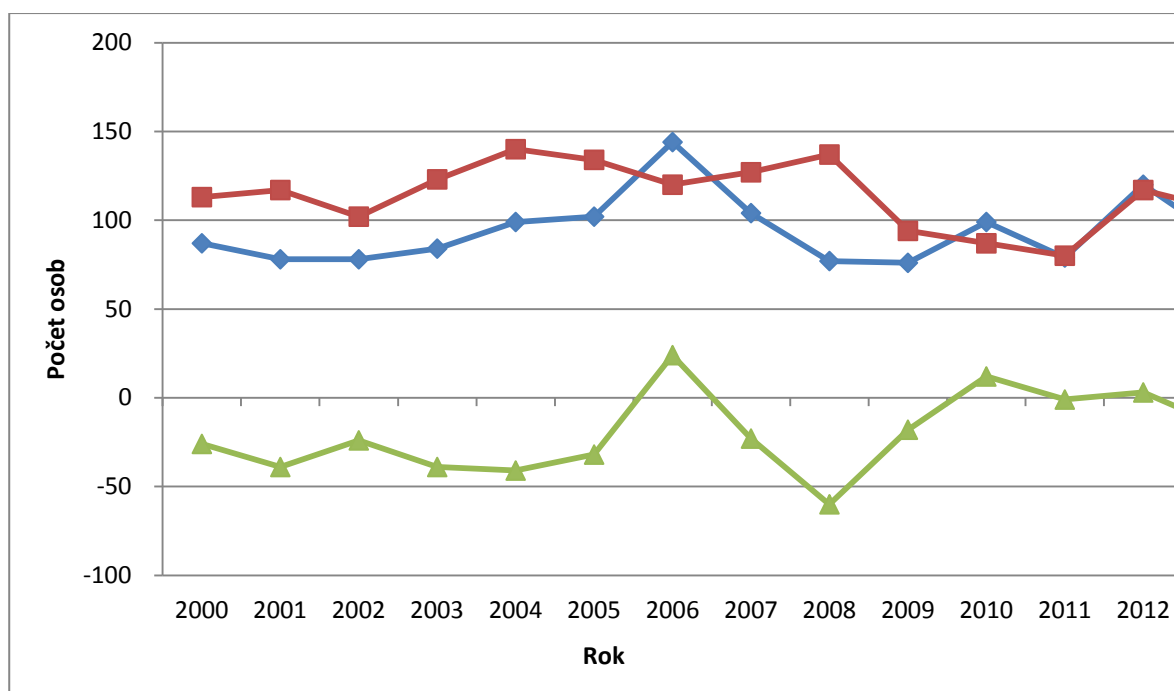
Rok	0–14 let (%)	15–64 let (%)	65 a více let (%)	Index stáří (%)
2000	17.5	67.8	14.7	84.2
2001	17.0	68.4	14.6	86.1
2002	16.8	68.5	14.7	87.8
2003	16.4	68.9	14.7	89.2
2004	15.7	69.5	14.8	93.8
2005	15.2	69.9	14.9	98.1
2006	15.1	70.3	14.5	96.3
2007	14.7	70.5	14.7	99.9
2008	14.2	71.0	14.8	104.7
2009	14.0	71.0	15.0	107.0
2010	13.6	71.2	15.2	111.9
2011	13.2	70.7	16.1	121.3
2012	13.2	70.4	16.4	124.7
2013	13.0	69.8	17.2	132.5

i	rok	y_{ij}	t_{ij}	$y_{ij} * t_{ij}$
1	2000	84.2	-6.5	-547.2251309
2	2001	86.1	-5.5	-473.5452586
3	2002	87.8	-4.5	-394.9180328
4	2003	89.2	-3.5	-312.2047244
5	2004	93.8	-2.5	-234.5971564
6	2005	98.1	-1.5	-147.2153465
7	2006	96.3	-0.5	-48.13895782
8	2007	99.9	0.5	49.93614304

9	2008	104.7	1.5	157.0850202
10	2009	107.0	2.5	267.4657534
11	2010	111.9	3.5	391.6430595
12	2011	121.3	4.5	546.0087083
13	2012	124.7	5.5	686.090776
14	2013	132.5	6.5	861.1773472
suma	x	1,438	0	801.5622002

15
16
17
18
19
20





Predikce	
Rok	Index stáří (%)
2014	153.8
2015	157.3
2016	160.8
2017	164.3
2018	167.9
2019	171.4
2020	150.2

Rok	Celkem	0–14 let
2000	5,466	955
2001	5,469	928
2002	5,455	915
2003	5,406	889
2004	5,359	844
2005	5,314	808
2006	5,335	806
2007	5,311	783
2008	5,229	741
2009	5,202	730
2010	5,197	706
2011	5,208	689
2012	5,189	683
2013	5,168	671

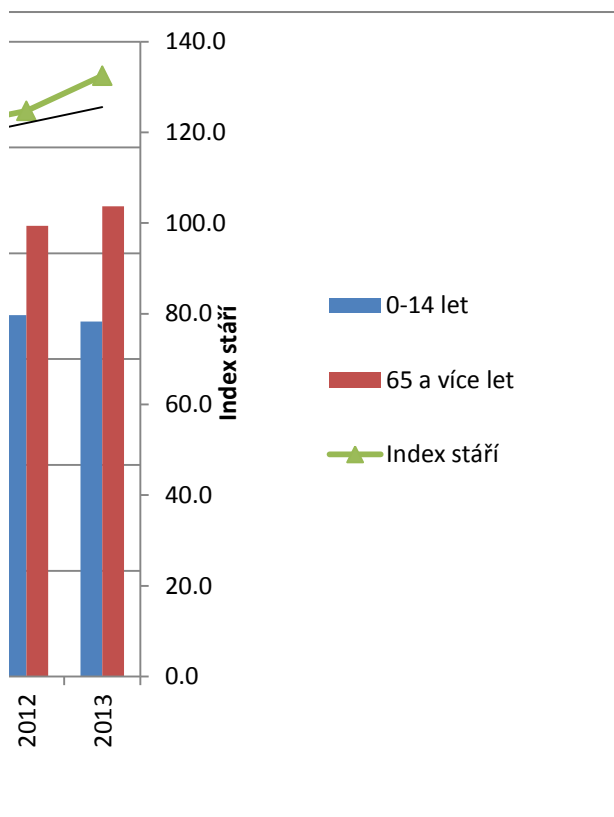
t^2	T_{ij}	$y_{ij}/T_{ij} = I_j$
42.25	79.7808439	1.055247
30.25	83.30419423	1.033551
20.25	86.82754456	1.010734
12.25	90.35089489	0.987277
6.25	93.87424522	0.999623
2.25	97.39759555	1.007659
0.25	100.9209459	0.953993
0.25	104.4442962	0.956225

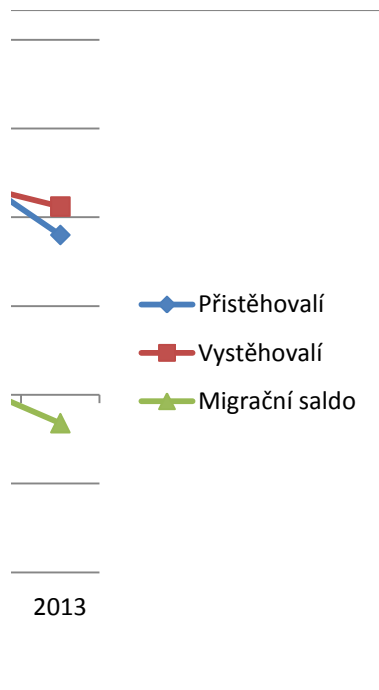
rok	t_{ij}	T_t
2014	14.5	153.8
2015	15.5	157.3
2016	16.5	160.8
2017	17.5	164.3
2018	18.5	167.9
2019	19.5	171.4
2020	13.5	150.2

2.25	107.9676465	0.969951
6.25	111.4909969	0.959596
12.25	115.0143472	0.972905
20.25	118.5376975	1.023601
30.25	122.0610479	1.021979
42.25	125.5843982	1.054978
227.5	1437.556695	x

b0 102.6826

b1 3.52335





15–64 let	65 +
3,707	804
3,742	799
3,737	803
3,724	793
3,723	792
3,713	793
3,753	776
3,746	782
3,712	776
3,691	781
3,701	790
3,683	836
3,654	852
3,608	889