

	HDP	EPI
2007		
2008		
2009		
2010		
2011		
2012		
2013		
2014		0.97191
2015		
2016		0.85
2017		

	EPI	
	umístění	celkový počet zemí
2007		
2008	68	149
2009		
2010	22	163
2011		
2012	18	133
2013		
2014	5	178
2015		
2016	27	180
2017		

HPI		
	umístění	celkový počet zemí
2007		
2008		
2009	92	143
2010		
2011		
2012	92	151
2013		
2014		
2015		
2016	64	140
2017		

1-umístění/celkový počet zemí			HDI		
	hodnota		umístění	celkový počet zemí	
		2007			
0.543624161	76.8	2007/2008			
		2009			
0.865030675	71.6	2010	28	169	
		2011	27	187	
0.864661654	64.79	2012	28	186	
		2013	28	187	
0.971910112	81.47	2014	28	187	
		2015	28	188	
0.85	84.67	2016			
		2017			

1-umístění/celkový po hodnota

0.356643357 38.3

0.390728477 39.4

0.542857143 27.3

1-umístění/celkový po hodnota

0.834319527 **0.841**

0.855614973 **0.865**

0.849462366 **0.873**

0.85026738 **0.861**

0.85026738 **0.87**

0.85106383 **0.878**

HDP

2007  
2008  
2009  
2010  
2011  
2012  
2013  
2014  
2015  
2016  
2017

EPI

umístění celkový počet zemí

2007		
2008	23	149
2009		
2010	33	163
2011		
2012	45	133
2013		
2014	28	178
2015		
2016	28	180
2017		

HPI			
	umístění	celkový počet zemí	1-umístění/celkový po
2007			
2008			
2009	90	143	0.370629371
2010			
2011			
2012	104	151	0.311258278
2013			
2014			
2015			
2016	69	140	0.507142857
2017			

HDI					
1-umístění/celkový počet zemí		umístění	celkový počet zemí	1-umístění/celkový po	
		2007			
0.845637584	84.2	2007/2008			
		2009			
0.797546012	69.1	2010	36	169	0.786982249
		2011	38	187	0.796791444
0.661654135	57,12?	2012	37	186	0.801075269
		2013	43	187	0.770053476
0.842696629	70.28	2014	44	187	0.764705882
		2015	43	188	0.771276596
0.844444444	84.6	2016			
		2017			

čet zemí

38.9

37.4

26.4

čet zemí

,

**0.805**

**0.816**

**0.831**

**0.819**

**0.828**

**0.836**

	HDP	EPI	HPI	HDI	
2007					0
2008					0
2009			0.48951	0.816568047	
2010				0.812834225	
2011				0.811827957	
2012			0.410596	0.802139037	
2013				0.812834225	
2014		0.882022		0.787234043	
2015					0
2016		0.866667	0.578571		0
2017					0

	EPI umístění
2007	
2008	17
2009	
2010	13
2011	
2012	12
2013	
2014	21
2015	
2016	24
2017	





1-umístění/celkový počet zem hodnota

0.48951049 43.5

0.410596026 40.1

0.578571429 28.2

1-umístění/celkový počet zemí

0.816568047 **0.818**

0.812834225 **0.834**

0.811827957 **0.84**

0.802139037 **0.83**

0.812834225 **0.844**

0.787234043 **0.845**

	HDP	EPI	HPI	HDI
2007				
2008				0
2009			0.461538	0.763313609
2010				0.75739645
2011				0.796791444
2012			0.529801	0.790322581
2013				0.812834225
2014		0.831461		0.807486631
2015				0.813829787
2016		0.788889	0.557143	0
2017				0

	EPI umístění
2007	
2008	42
2009	
2010	63
2011	
2012	22
2013	
2014	30
2015	
2016	38
2017	

	ISEW umístění	celkový počet zemí
2007		
2008		
2009		
2010		
2011		
2012		
2013		
2014		
2015		
2016		
2017		

HPI  
umístění celkový počet zemí

2007		
2008		
2009	77	143
2010		
2011		
2012	71	151
2013		
2014		
2015		
2016	62	140
2017		

celkový počet zemí 1-umístění/celkový počet zemí

HDI  
umístění celkový počet zemí

			2007	41	182
149	0.718120805	80.5	2007/2008		
			2009	40	169
163	0.613496933	63.1	2010	41	169
			2011	38	187
133	0.834586466	63.47	2012	39	186
			2013	35	187
178	0.831460674	69.53	2014	36	187
			2015	35	188
180	0.788888889	81.26	2016		
			2017		

<http://hdr.undp.org/en>  
lsey: <http://www.ssfir>

1-umístění/celkový počet hodnota

0.461538462 42.8

0.529801325 42.6

0.557142857 27.5

1-umístění/celkový počet zemí

0.774725275 0.88

0.763313609 0.791

0.75739645 **0.795**

0.796791444 **0.813**

0.790322581 **0.821**

0.812834225 **0.834**

0.807486631 **0.843**

0.813829787 **0.855**

n/global-reports  
ndex.com/data-all-countries/



ČR

	umístění	celkový poi	1-umístění/c	Hodnota
2007				
2008				
2009				
2010	28	169	0.8343195	<b>0.841</b>
2011	27	187	0.855615	<b>0.865</b>
2012	28	186	0.8494624	<b>0.873</b>
2013	28	187	0.8502674	<b>0.861</b>
2014	28	187	0.8502674	<b>0.87</b>
2015	28	188	0.8510638	<b>0.878</b>
2016			#####	
2017				

Mad

	umístění
2007	
2008	
2009	
2010	36
2011	38
2012	37
2013	43
2014	44
2015	43
2016	
2017	

Slo

	umístění	celkový poi	1-umístění/c	Hodnota
2007				
2008				
2009				
2010	31	169	0.816568	<b>0.818</b>
2011	35	187	0.8128342	<b>0.834</b>
2012	35	186	0.811828	<b>0.84</b>
2013	37	187	0.802139	<b>0.83</b>
2014	35	187	0.8128342	<b>0.844</b>
2015	40	188	0.787234	<b>0.845</b>
2016			#####	
2017				

Poi

	umístění
2007	
2008	
2009	
2010	41
2011	39
2012	39
2013	35
2014	36
2015	36
2016	
2017	

HDI gender 2015

	female	male
čr	0.869	0.883
Po	0.857	0.852
slov	0.838	0.846
Mad	0.83	0.846

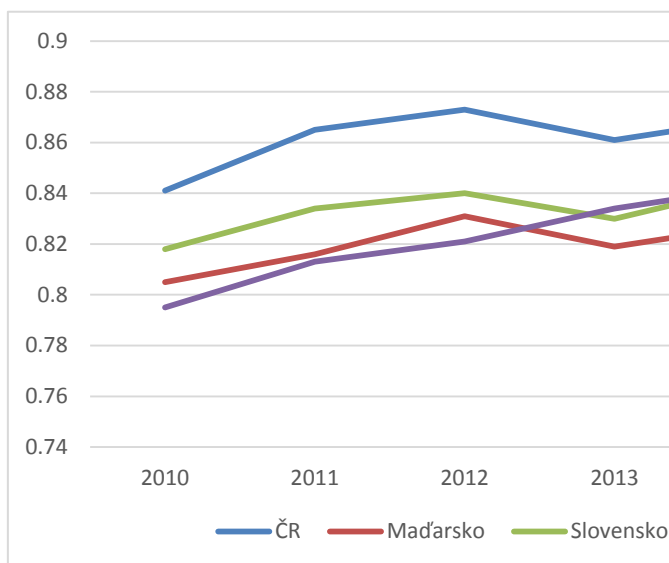
celkový poi 1-umístění/ Hodnota

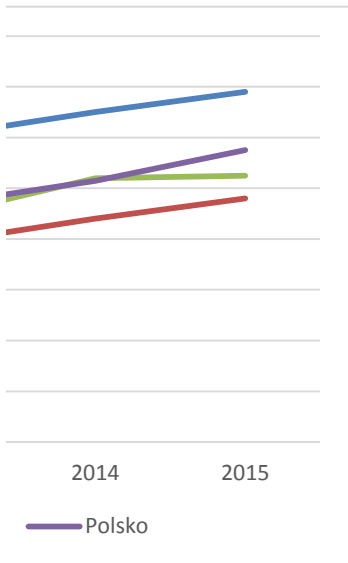
169	0.786982	<b>0.805</b>
187	0.796791	<b>0.816</b>
186	0.801075	<b>0.831</b>
187	0.770053	<b>0.819</b>
187	0.764706	<b>0.828</b>
188	0.771277	<b>0.836</b>
#####		

	ČR	Maďarsko	Slovensko	Polsko
2007				
2009				
2010	<b>0.841</b>	<b>0.805</b>	<b>0.818</b>	<b>0.795</b>
2011	<b>0.865</b>	<b>0.816</b>	<b>0.834</b>	<b>0.813</b>
2012	<b>0.873</b>	<b>0.831</b>	<b>0.84</b>	<b>0.821</b>
2013	<b>0.861</b>	<b>0.819</b>	<b>0.83</b>	<b>0.834</b>
2014	<b>0.87</b>	<b>0.828</b>	<b>0.844</b>	<b>0.843</b>
2015	<b>0.878</b>	<b>0.836</b>	<b>0.845</b>	<b>0.855</b>

celkový poi 1-umístění/ Hodnota

169	0.757396	<b>0.795</b>
187	0.791444	<b>0.813</b>
186	0.790323	<b>0.821</b>
187	0.812834	<b>0.834</b>
187	0.807487	<b>0.843</b>
188	0.808511	<b>0.855</b>







ČR	umístění	celkový poi	1-umístění	hodnota
2009	92	143	0.356643	38.3
2012	92	151	0.390728	39.4
2015	64	140	0.542857	27.3

Maďarsko	umístění
2009	90
2012	104
2015	69
2017	

Slov	umístění	celkový poi	1-umístění	hodnota
2009	73	143	0.48951	43.5
2012	89	151	0.410596	40.1
2015	59	140	0.578571	28.2
2017				

Polsko	umístění
2009	77
2012	71
2015	62
2017	

	ČR	Maďarsko	Slovensko	Polsko
2009	38.3	38.9	43.5	42.8
2012	39.4	37.4	40.1	42.6
2016	27.3	26.4	28.2	27.5

	2009		2012		2016			
	Délka život	spokojenos ek. stopa	Délka život	spokojenos ek. stopa	Délka života	spokojenos		
ČR	75.9	6.9	5.4	77.7	6.2	5.3	78.2	6.3
Polsko	75.2	6.5	4	76	5.8	3.9	76.9	5.9
Maďarsko	72.9	5.7	3.5	74,7,	4.7	3.6	74.9	4.7
Slovensko	74.2	6.1	3.3	75.4	6.1	4.7	75.9	5.9

celkový poi 1-umístění hodnota

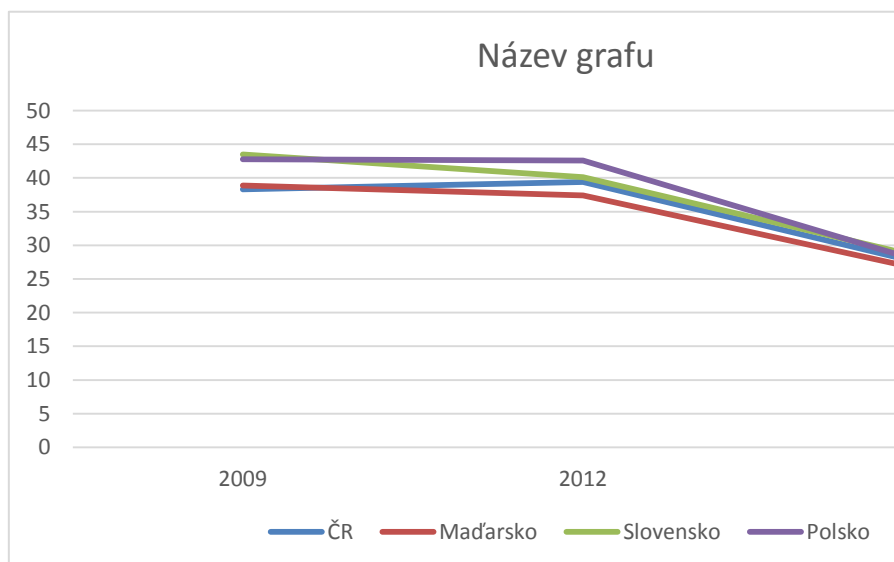
143	0.370629	38.9
151	0.311258	37.4
140	0.507143	26.4

celkový poi 1-umístění hodnota

143	0.461538	42.8
151	0.529801	42.6
140	0.557143	27.5

ek. stopa nerovnost příjmů

5.2	9.00
4.4	11.0
2.9	15.00
4.1	13





ČR

	umístění	celkový počet	1-umístění	hodnota
2008	68	149	0.543624	76.8
2010	22	127	0.826772	71.6
2012	18	132	0.863636	64.79
2014	5	178	0.97191	81.47
2016	27	178	0.848315	84.67

Madarsko

	umístění
2008	23
2010	33
2012	45
2014	28
2016	28

Slov

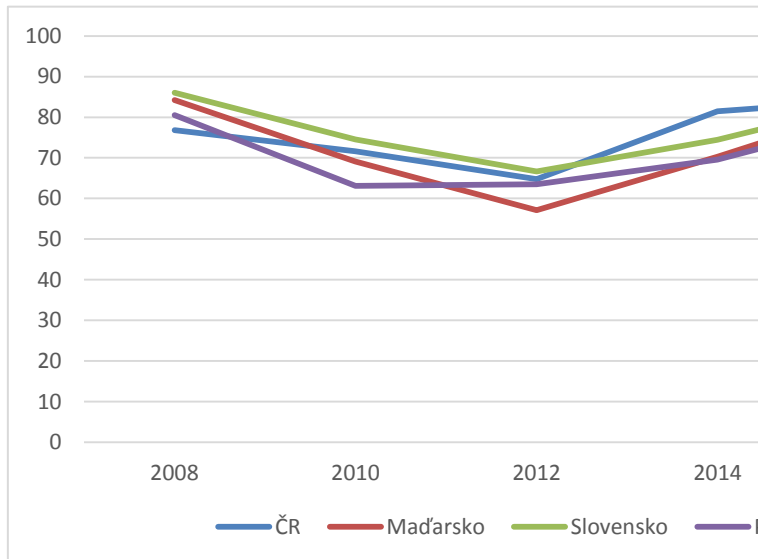
	umístění	celkový počet	1-umístění	hodnota
2008	17	149	0.885906	86
2010	13	127	0.897638	74.5
2012	12	132	0.909091	66.62
2014	21	178	0.882022	74.45
2016	24	178	0.865169	85.42

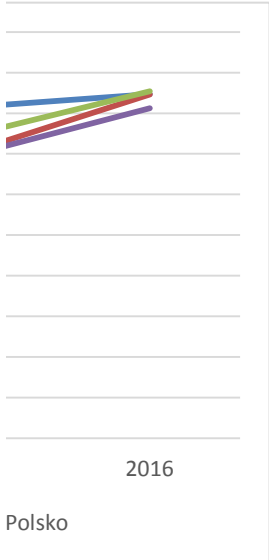
Polsko

	umístění
2008	42
2010	63
2012	22
2014	30
2016	38

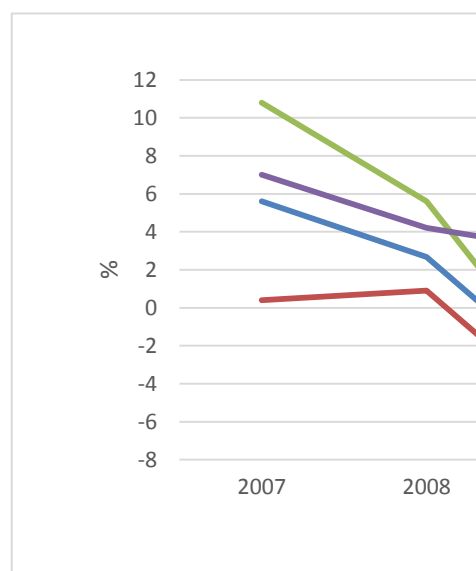
			ČR	Maďarsko	Slovensko	Polsko	
celkový poi 1-umístění	hodnota		2008	76.8	84.2	86	80.5
149	0.845638	84.2	2010	71.6	69.1	74.5	63.1
127	0.740157	69.1	2012	64.79	57.12	66.62	63.47
132	0.659091	57.12	2014	81.47	70.28	74.45	69.53
178	0.842697	70.28	2016	84.67	84.6	85.42	81.26
178	0.842697	84.6					

celkový poi 1-umístění	hodnota	
149	0.718121	80.5
127	0.503937	63.1
132	0.833333	63.47
178	0.831461	69.53
178	0.786517	81.26

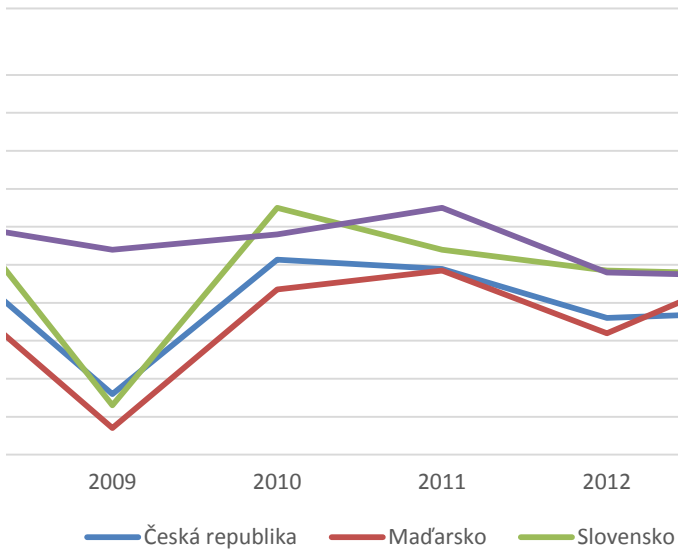




	2007	2008	2009	2010	2011	2012
Česká republika	5.6	2.7	-4.8	2.3	1.8	-0.8
Maďarsko	0.4	0.9	-6.6	0.7	1.7	-1.6
Slovensko	10.8	5.6	-5.4	5	2.8	1.7
Polsko	7	4.2	2.8	3.6	5	1.6

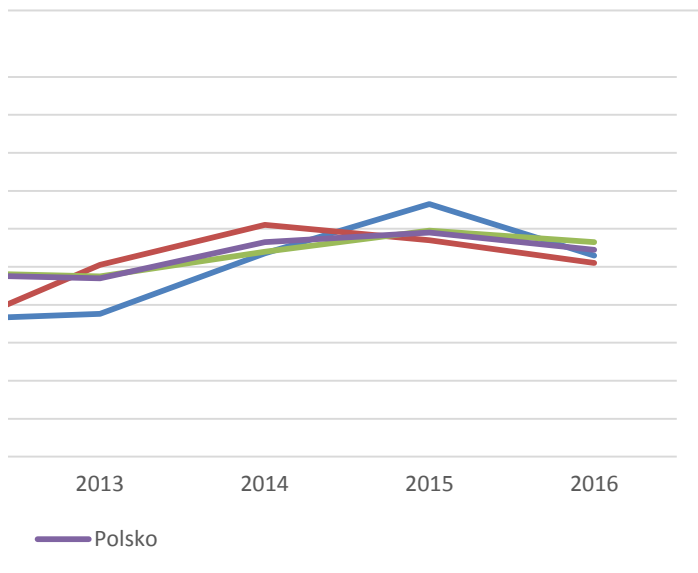


2013	2014	2015	2016
-0.5	2.7	5.3	2.6
2.1	4.2	3.4	2.2
1.5	2.8	3.9	3.3
1.4	3.3	3.8	2.9





<http://ec.europa.eu/eurostat/tgm/table.do?tab=table&init=1&language=en&pcode=tec00115&plugin=1>  
[https://www.czso.cz/csu/czso/hmu\\_cr](https://www.czso.cz/csu/czso/hmu_cr) - nalezeno, pak smazat



ČR

	umístění	celkový počet zemí	1-umístění/celkov hodnota/dolary		
2007	40	204	0.803921569	189,227,050,760	
2008	38	202	0.811881188	235,718,586,901	
2009	40	201	0.800995025	206,179,982,164	
2010	45	202	0.777227723	207,477,857,919	
2011	40	202	0.801980198	252,251,992,029	
2012	39	197	0.802030457	257,296,579,579	
2013	37	198	0.813131313	292,489,185,194	
2014	50	196	0.744897959	207,818,330,724	
2015	51	195	0.738461538	179,640,210,726	v eurech - přepočt dle
2016	21	38	0.447368421	191718521357	4802548960000.00

Polsko

	umístění	celkový počet zemí	1-umístění/celkov hodnota/dolary		
2007	22	204	0.892156863	429,249,647,595	
2008	20	202	0.900990099	533,815,789,474	
2009	21	201	0.895522388	440,346,575,958	
2010	24	202	0.881188119	479,257,883,742	
2011	20	202	0.900990099	671,238,840,107	
2012	20	202	0.900990099	668,043,614,123	
2013	20	198	0.898989899	688,504,173,431	
2014	19	204	0.906862745	756,350,347,333	
2015	28	195	0.856410256	385,874,474,399	v eurech - přepočt dle
2016	17	38	0.552631579	462,541,374,850	11,586,661,440,000

## Slovensko

	umístění	celkový počet 1-umístění/celkový počet ze hodnota/dolary			
	2007	58	204	0.715686275	86,304,245,825
	2008	58	202	0.712871287	100,324,627,215
	2009	58	201	0.711442786	102,477,791,472
	2010	59	202	0.707920792	115,279,077,465
	2011	59	202	0.707920792	128,637,938,711
	2012	59	202	0.707920792	133,355,749,482
	2013	58	198	0.707070707	149,990,451,022
	2014	61	196	0.68877551	110,081,248,587
čnb 23.3.2	2015	60	195	0.692307692	99,290,381,000
	2016	15	38	0.605263158	1,191,059,058

## Maďarsko

	umístění	celkový počet 1-umístění/celkový počet ze hodnota/dolary			
	2007	49	204	0.759803922	139,850,794,387
	2008	51	202	0.747524752	157,998,423,132
	2009	57	201	0.71641791	105,899,930,507
	2010	58	202	0.712871287	115,419,050,942
	2011	56	202	0.722772277	154,027,536,232
	2012	56	202	0.722772277	218,000,986,223
	2013	46	198	0.767676768	234,648,370,497
	2014	49	204	0.759803922	213,810,022,462
čnb 23.3.2	2015	50	195	0.743589744	184,388,432,149
	2016	23	38	0.394736842	123,492,126,148

v eurech - přepočt dle čnb 23.3.2017  
29,836,029,412

v eurech - přepočt dle čnb 23.3.2017  
3,093,477,760,000

Series Name	Country Name	Country Cc 2007 [YR2007]	
GDP (current US\$)	Bulgaria	BGR	44,765,733,380
GDP (current US\$)	Syrian Arab Republic	SYR	40,405,006,007
GDP (current US\$)	United States	USA	14,477,635,000,000
GDP (current US\$)	Japan	JPN	4,515,264,514,431
GDP (current US\$)	Channel Islands	CHI	11,514,605,842
GDP (current US\$)	Germany	DEU	3,439,953,462,907
GDP (current US\$)	China	CHN	3,552,182,311,653
GDP (current US\$)	Brazil	BRA	1,397,084,381,901
GDP (current US\$)	Spain	ESP	1,479,341,637,011
GDP (current US\$)	France	FRA	2,663,112,510,266
GDP (current US\$)	Mexico	MEX	1,043,471,321,169
GDP (current US\$)	United Kingdom	GBR	3,074,359,743,898
GDP (current US\$)	Russian Federation	RUS	1,299,705,247,686
GDP (current US\$)	Italy	ITA	2,203,053,380,783
GDP (current US\$)	Canada	CAN	1,464,977,190,206
GDP (current US\$)	India	IND	1,201,111,768,409
GDP (current US\$)	Australia	AUS	853,764,622,753
GDP (current US\$)	Korea, Rep.	KOR	1,122,679,154,632
GDP (current US\$)	Turkey	TUR	675,770,112,825
GDP (current US\$)	Indonesia	IDN	460,192,550,124
GDP (current US\$)	Saudi Arabia	SAU	415,964,509,673
GDP (current US\$)	Poland	POL	429,249,647,595
GDP (current US\$)	Belgium	BEL	471,821,105,940
GDP (current US\$)	Switzerland	CHE	479,913,034,322
GDP (current US\$)	Sweden	SWE	487,816,328,342
GDP (current US\$)	Norway	NOR	401,082,621,083
GDP (current US\$)	Netherlands	NLD	839,419,655,078
GDP (current US\$)	Finland	FIN	255,384,615,385
GDP (current US\$)	Greece	GRC	318,497,936,901
GDP (current US\$)	Austria	AUT	388,691,445,387
GDP (current US\$)	Ukraine	UKR	142,719,009,901
GDP (current US\$)	Iran, Islamic Rep.	IRN	349,881,601,459
GDP (current US\$)	United Arab Emirates	ARE	257,916,133,424
GDP (current US\$)	Venezuela, RB	VEN	230,364,012,576
GDP (current US\$)	South Africa	ZAF	299,033,511,000
GDP (current US\$)	Nigeria	NGA	166,451,213,396
GDP (current US\$)	Denmark	DNK	319,423,370,134
GDP (current US\$)	Argentina	ARG	287,530,508,431
GDP (current US\$)	Egypt, Arab Rep.	EGY	130,478,960,092
GDP (current US\$)	Portugal	PRT	240,169,336,162
GDP (current US\$)	Hong Kong SAR, China	HKG	211,597,405,594
GDP (current US\$)	Czech Republic	CZE	189,227,050,760
GDP (current US\$)	Malaysia	MYS	193,547,824,063
GDP (current US\$)	Colombia	COL	207,416,490,983
GDP (current US\$)	Thailand	THA	262,942,650,544
GDP (current US\$)	Israel	ISR	178,706,717,753
GDP (current US\$)	Ireland	IRL	269,917,518,478
GDP (current US\$)	Singapore	SGP	179,981,288,567
GDP (current US\$)	Romania	ROU	171,536,685,396
GDP (current US\$)	Kuwait	KWT	114,641,097,818
GDP (current US\$)	Philippines	PHL	149,359,920,006
GDP (current US\$)	Qatar	QAT	79,712,087,912
GDP (current US\$)	Pakistan	PAK	152,385,716,312
GDP (current US\$)	Iraq	IRQ	88,840,050,497
GDP (current US\$)	Algeria	DZA	134,977,087,734
GDP (current US\$)	New Zealand	NZL	137,314,617,476
GDP (current US\$)	Chile	CHL	173,605,968,179

GDP (current US\$)	Hungary	HUN	139,850,794,387
GDP (current US\$)	Kazakhstan	KAZ	104,849,886,826
GDP (current US\$)	Puerto Rico	PRI	89,524,131,617
GDP (current US\$)	Slovak Republic	SVK	86,304,245,825
GDP (current US\$)	Morocco	MAR	79,041,294,874
GDP (current US\$)	Peru	PER	102,170,981,144
GDP (current US\$)	Vietnam	VNM	77,414,425,532
GDP (current US\$)	Bangladesh	BGD	79,611,888,213
GDP (current US\$)	Angola	AGO	60,448,921,272
GDP (current US\$)	Libya	LYB	67,516,236,338
GDP (current US\$)	Tunisia	TUN	38,908,069,299
GDP (current US\$)	Sudan	SDN	45,898,948,564
GDP (current US\$)	Cote d'Ivoire	CIV	20,343,635,320
GDP (current US\$)	Lithuania	LTU	39,738,180,077
GDP (current US\$)	Cuba	CUB	58,603,900,000
GDP (current US\$)	Ecuador	ECU	51,007,777,000
GDP (current US\$)	Sri Lanka	LKA	32,350,248,411
GDP (current US\$)	Ghana	GHA	24,758,819,718
GDP (current US\$)	Luxembourg	LUX	50,888,134,410
GDP (current US\$)	Belarus	BLR	45,275,747,861
GDP (current US\$)	Slovenia	SVN	48,114,688,201
GDP (current US\$)	Myanmar	MMR	20,182,477,481
GDP (current US\$)	Uzbekistan	UZB	22,311,393,928
GDP (current US\$)	Dominican Republic	DOM	44,169,678,153
GDP (current US\$)	Latvia	LVA	30,901,399,261
GDP (current US\$)	Oman	OMN	42,085,305,592
GDP (current US\$)	Guatemala	GTM	34,113,107,086
GDP (current US\$)	Yemen, Rep.	YEM	21,656,517,484
GDP (current US\$)	Serbia	SRB	40,289,556,656
GDP (current US\$)	Costa Rica	CRI	26,743,874,287
GDP (current US\$)	Macao SAR, China	MAC	18,340,447,243
GDP (current US\$)	Bolivia	BOL	13,120,159,976
GDP (current US\$)	Croatia	HRV	60,093,155,533
GDP (current US\$)	Jordan	JOR	17,110,587,447
GDP (current US\$)	Tanzania	TZA	21,501,741,757
GDP (current US\$)	Cyprus	CYP	24,077,470,572
GDP (current US\$)	Azerbaijan	AZE	33,050,343,783
GDP (current US\$)	El Salvador	SLV	20,104,900,000
GDP (current US\$)	Estonia	EST	22,237,061,730
GDP (current US\$)	Panama	PAN	20,958,000,000
GDP (current US\$)	Kenya	KEN	31,958,195,182
GDP (current US\$)	Bahrain	BHR	21,730,000,000
GDP (current US\$)	Lebanon	LBN	24,577,114,428
GDP (current US\$)	Congo, Dem. Rep.	COD	16,364,029,327
GDP (current US\$)	Uruguay	URY	23,410,572,622
GDP (current US\$)	Trinidad and Tobago	TTO	21,642,304,046
GDP (current US\$)	Paraguay	PRY	13,794,910,634
GDP (current US\$)	Jamaica	JAM	12,824,094,990
GDP (current US\$)	Turkmenistan	TKM	12,664,165,103
GDP (current US\$)	Equatorial Guinea	GNQ	13,071,718,759
GDP (current US\$)	Ethiopia	ETH	19,707,616,773
GDP (current US\$)	Zambia	ZMB	14,056,957,976
GDP (current US\$)	Brunei Darussalam	BRN	12,247,694,247
GDP (current US\$)	Uganda	UGA	12,292,813,603
GDP (current US\$)	Bosnia and Herzegovina	BIH	15,776,422,673
GDP (current US\$)	Georgia	GEO	10,172,869,680
GDP (current US\$)	Honduras	HND	12,275,501,784
GDP (current US\$)	Senegal	SEN	11,284,603,071

GDP (current US\$)	Armenia	ARM	9,206,301,700
GDP (current US\$)	Nepal	NPL	10,325,618,017
GDP (current US\$)	Chad	TCD	8,638,711,443
GDP (current US\$)	Papua New Guinea	PNG	9,545,071,325
GDP (current US\$)	Iceland	ISL	21,295,012,099
GDP (current US\$)	Mauritius	MUS	8,150,138,757
GDP (current US\$)	Malta	MLT	7,880,509,171
GDP (current US\$)	Gabon	GAB	12,438,956,756
GDP (current US\$)	Albania	ALB	10,701,011,897
GDP (current US\$)	Cambodia	KHM	8,639,235,842
GDP (current US\$)	Cameroon	CMR	22,365,265,026
GDP (current US\$)	Congo, Rep.	COG	8,394,688,284
GDP (current US\$)	Madagascar	MDG	7,342,923,489
GDP (current US\$)	Mozambique	MOZ	9,366,742,309
GDP (current US\$)	Botswana	BWA	10,939,053,367
GDP (current US\$)	Isle of Man	IMN	5,685,988,395
GDP (current US\$)	Namibia	NAM	8,740,865,600
GDP (current US\$)	Afghanistan	AFG	9,843,842,455
GDP (current US\$)	Mali	MLI	8,145,694,632
GDP (current US\$)	Liechtenstein	LIE	4,601,299,567
GDP (current US\$)	Macedonia, FYR	MKD	8,336,478,142
GDP (current US\$)	Bahamas, The	BHS	8,318,996,000
GDP (current US\$)	Nicaragua	NIC	7,423,377,429
GDP (current US\$)	Moldova	MDA	4,401,154,128
GDP (current US\$)	Benin	BEN	5,969,535,132
GDP (current US\$)	Tajikistan	TJK	3,719,497,371
GDP (current US\$)	Burkina Faso	BFA	6,771,277,871
GDP (current US\$)	Rwanda	RWA	3,824,811,913
GDP (current US\$)	Monaco	MCO	5,974,371,696
GDP (current US\$)	Montenegro	MNE	3,668,857,104
GDP (current US\$)	Guam	GUM	4,375,000,000
GDP (current US\$)	Bermuda	BMU	5,895,048,000
GDP (current US\$)	Virgin Islands (U.S.)	VIR	4,803,000,000
GDP (current US\$)	West Bank and Gaza	PSE	5,505,800,000
GDP (current US\$)	Lao PDR	LAO	4,222,962,988
GDP (current US\$)	Kyrgyz Republic	KGZ	3,802,566,171
GDP (current US\$)	Kosovo	XKX	4,833,561,456
GDP (current US\$)	Zimbabwe	ZWE	5,291,950,100
GDP (current US\$)	Haiti	HTI	5,885,321,656
GDP (current US\$)	Mongolia	MNG	4,234,999,823
GDP (current US\$)	Guinea	GIN	6,281,695,536
GDP (current US\$)	Barbados	BRB	4,523,750,000
GDP (current US\$)	Malawi	MWI	4,432,192,844
GDP (current US\$)	Swaziland	SWZ	3,469,363,996
GDP (current US\$)	Fiji	FJI	3,405,050,612
GDP (current US\$)	Mauritania	MRT	3,356,757,497
GDP (current US\$)	Suriname	SUR	2,936,612,022
GDP (current US\$)	Aruba	ABW	2,623,726,257
GDP (current US\$)	Andorra	AND	4,016,972,351
GDP (current US\$)	Maldives	MDV	1,868,383,460
GDP (current US\$)	Eritrea	ERI	1,317,974,491
GDP (current US\$)	Central African Republic	CAF	1,698,125,618
GDP (current US\$)	Burundi	BDI	1,356,078,278
GDP (current US\$)	Faroe Islands	FRO	2,278,229,880
GDP (current US\$)	Guyana	GUY	1,740,334,782
GDP (current US\$)	Greenland	GRL	2,049,139,372
GDP (current US\$)	Sierra Leone	SLE	2,158,496,873
GDP (current US\$)	Lesotho	LSO	1,820,811,281

GDP (current US\$)	San Marino	SMR	2,488,365,727
GDP (current US\$)	Togo	TGO	2,523,462,557
GDP (current US\$)	Cabo Verde	CPV	1,513,934,037
GDP (current US\$)	Antigua and Barbuda	ATG	1,311,401,319
GDP (current US\$)	Belize	BLZ	1,290,573,400
GDP (current US\$)	Bhutan	BTN	1,196,091,805
GDP (current US\$)	St. Lucia	LCA	1,277,494,148
GDP (current US\$)	Gambia, The	GMB	798,870,874
GDP (current US\$)	Liberia	LBR	739,027,200
GDP (current US\$)	Samoa	WSM	550,970,656
GDP (current US\$)	Northern Mariana Islands	MNP	938,000,000
GDP (current US\$)	Seychelles	SYC	1,033,561,654
GDP (current US\$)	Djibouti	DJI	847,918,929
GDP (current US\$)	Timor-Leste	TLS	531,260,865
GDP (current US\$)	American Samoa	ASM	520,000,000
GDP (current US\$)	Guinea-Bissau	GNB	695,606,289
GDP (current US\$)	St. Kitts and Nevis	KNA	674,008,481
GDP (current US\$)	Vanuatu	VUT	526,428,310
GDP (current US\$)	Grenada	GRD	758,683,599
GDP (current US\$)	St. Vincent and the Grenadines	VCT	651,833,333
GDP (current US\$)	Comoros	COM	462,453,583
GDP (current US\$)	Solomon Islands	SLB	516,074,229
GDP (current US\$)	Dominica	DMA	421,375,852
GDP (current US\$)	Tonga	TON	300,143,057
GDP (current US\$)	Micronesia, Fed. Sts.	FSM	256,548,100
GDP (current US\$)	Marshall Islands	MHL	150,776,500
GDP (current US\$)	Palau	PLW	194,767,100
GDP (current US\$)	Kiribati	KIR	130,754,916
GDP (current US\$)	Sao Tome and Principe	STP	145,827,430
GDP (current US\$)	Tuvalu	TUV	27,030,374
GDP (current US\$)	Nauru	NRU	20,432,742



2008 [YR2008]	2009 [YR2009]	2010 [YR2010]	2011 [YR2011]
54,409,138,498 ..	14,418,739,000,000	14,964,372,000,000	15,517,926,000,000
14,718,582,000,000	5,109,953,609,257	6,100,620,488,868	7,572,553,836,875
5,037,908,465,114	3,418,005,001,389	3,417,094,562,649	6,157,459,594,824
3,752,365,607,148	2,693,827,452,070	2,646,837,111,795	3,757,698,281,118
4,598,206,091,384	2,382,825,985,356	2,441,173,394,730	2,862,680,142,625
1,695,824,517,396	1,667,019,605,882	2,208,871,646,203	2,619,700,404,733
1,635,015,380,108	1,323,940,295,875	1,656,617,073,124	2,616,201,578,192
2,923,465,651,091	2,185,160,183,384	2,125,058,244,243	2,276,292,404,601
1,101,275,278,669	927,168,311,000	1,142,876,772,659	2,051,661,732,060
2,890,564,338,235	1,499,099,749,931	1,431,616,749,640	1,823,049,927,771
1,660,844,408,500	1,222,643,696,992	1,524,916,112,079	1,788,647,906,048
2,390,729,163,615	1,371,153,004,986	1,613,464,422,811	1,488,067,258,325
1,549,131,208,997	901,934,953,365	1,094,499,338,703	1,390,557,034,408
1,186,952,757,636	894,948,748,437	1,051,128,603,514	1,202,463,682,634
1,055,334,825,425	857,932,759,100	836,389,937,229	1,171,187,519,661
1,002,219,052,968	644,639,902,581	771,876,791,232	893,757,287,202
764,335,657,318	541,506,500,414	583,782,977,866	892,969,107,923
543,253,873,102	574,505,139,225	755,094,160,363	832,546,270,784
519,796,800,000	429,097,866,667	528,207,200,000	699,579,638,638
533,815,789,474	440,346,575,958	479,257,883,742	671,238,840,107
518,625,897,173	386,622,457,580	429,130,952,709	583,500,357,530
554,363,487,120	484,552,792,442	483,548,031,197	563,109,663,291
513,965,650,650	400,172,297,861	391,892,746,545	530,163,281,575
462,554,432,624	414,059,094,949	487,069,570,464	528,725,113,046
936,228,211,513	429,657,033,108	488,377,689,565	527,008,453,887
283,742,493,042	329,787,628,928	393,190,682,070	498,831,558,926
354,460,802,549	332,976,484,578	423,627,422,092	431,120,310,089
430,294,287,388	321,241,396,034	321,995,350,347	416,878,162,441
179,992,405,832	168,334,599,538	199,590,775,190	411,743,801,712
406,070,949,554	330,000,252,153	299,361,576,558	370,818,747,397
315,474,615,739	253,547,358,747	289,880,430,197	350,908,390,034
315,953,388,511	281,710,095,725	341,105,009,515	344,003,209,696
287,099,991,517	243,745,748,819	238,303,443,425	335,415,162,156
208,064,753,766	169,481,317,540	369,062,464,570	316,482,190,800
353,361,056,080	236,311,338,427	221,951,353,967	297,951,960,784
361,558,037,110	297,216,730,669	375,298,134,440	287,797,822,093
162,818,181,818	188,982,374,701	218,888,324,505	275,599,459,374
262,007,590,450	233,821,670,220	287,018,179,194	273,674,236,773
219,279,678,430	207,419,370,241	233,609,522,091	261,628,548,084
235,718,586,901	206,179,982,164	207,477,857,919	252,251,992,029
230,813,597,938	192,408,387,762	236,421,782,178	248,513,617,677
243,982,436,734	202,257,586,268	255,016,609,233	244,895,101,712
291,383,081,232	251,499,027,508	247,799,815,768	239,018,540,057
215,840,354,627	172,389,498,445	218,537,551,220	236,001,858,960
275,020,018,163	214,046,415,026	228,637,697,575	227,948,349,666
192,225,881,688	168,152,775,283	177,406,854,515	224,143,083,707
208,181,626,901	167,422,949,529	167,998,080,493	213,587,413,184
147,395,833,333	115,308,661,143	148,047,348,241	200,019,057,308
174,195,135,053	130,593,960,612	130,922,638,689	192,626,507,972
115,270,054,945	97,798,351,648	125,122,306,346	185,749,664,444
170,077,814,106	137,211,039,898	161,207,268,655	185,362,855,081
131,613,661,510	111,660,855,043	138,516,722,650	171,761,737,047
171,000,691,878	121,337,372,728	146,580,949,349	168,461,998,741
133,279,679,483	96,385,638,000	98,381,268,000	167,775,274,725
179,638,496,279	117,227,769,792	136,013,155,905	163,159,671,670

157,998,423,132	105,899,930,507	115,419,050,942	154,027,536,232
133,441,612,247	120,822,986,521	147,528,937,029	140,782,064,609
93,639,316,000	106,014,659,770	115,931,749,697	135,539,438,560
100,324,627,215	102,477,791,472	115,279,077,465	128,637,938,711
92,507,257,784	63,028,320,702	74,773,444,901	104,115,923,083
120,550,599,815	88,945,625,174	89,501,012,916	101,370,474,295
99,130,304,099	92,897,320,376	93,216,746,662	100,351,670,000
91,631,278,239	75,492,384,801	82,470,913,121	98,181,259,740
84,178,032,716	62,080,000,000	64,328,000,000	79,276,664,000
87,140,405,361	62,703,095,751	59,665,427,465	68,990,000,000
44,856,586,316	44,291,490,421	52,902,703,376	67,937,307,412
54,526,580,232	48,388,296,489	58,641,621,847	67,327,289,320
24,224,903,100	36,906,181,381	49,540,813,342	65,951,627,200
47,850,551,149	37,733,994,976	41,338,595,381	65,292,741,297
60,806,300,000	53,150,209,168	65,634,109,237	62,236,751,773
61,762,635,000	51,370,543,206	53,212,476,812	61,757,788,945
40,713,812,310	42,066,217,872	56,725,745,039	60,004,630,234
28,526,891,010	33,689,223,673	39,332,770,929	59,977,326,086
55,849,686,539	51,884,481,410	50,610,031,136	57,746,684,847
60,763,483,146	49,209,523,810	57,222,490,769	57,418,391,042
55,589,849,128	48,376,555,306	53,954,579,004	51,290,792,018
31,862,554,102	25,977,847,814	32,174,772,956	47,962,439,293
29,549,438,884	31,660,911,290	40,284,481,662	47,654,841,113
48,288,967,303	43,454,935,940	44,050,929,160	46,466,728,667
35,596,016,664	30,562,361,123	37,268,635,287	45,915,191,189
60,905,331,599	50,244,793,832	48,013,606,745	45,810,626,509
39,136,893,345	37,021,512,049	39,999,659,234	43,476,878,139
26,910,851,362	28,573,777,052	31,407,908,612	42,262,697,840
49,259,526,053	42,616,653,300	39,460,357,731	41,953,433,591
30,612,932,803	35,477,118,070	38,419,626,628	40,075,674,163
20,917,444,920	23,820,230,000	26,425,379,437	39,566,292,433
16,674,324,634	20,214,385,965	22,583,157,895	36,709,860,068
70,481,451,814	62,519,686,000	69,555,367,000	34,699,395,524
21,972,004,086	32,437,389,116	29,933,790,334	34,373,820,500
27,368,386,358	25,130,274,124	30,906,749,533	33,878,631,649
27,839,460,964	22,938,218,085	25,713,271,277	32,726,417,878
48,852,482,960	37,440,673,478	37,120,517,694	31,952,763,089
21,430,950,000	21,475,520,709	28,123,640,999	29,337,006,833
24,194,039,256	20,661,030,000	21,418,330,000	29,233,333,333
24,522,200,000	24,277,493,862	24,884,505,035	28,840,263,380
35,895,153,328	26,169,854,045	23,757,368,290	28,776,595,745
25,710,877,660	26,593,500,000	28,917,200,000	28,223,552,825
29,227,350,570	26,017,925,552	26,143,818,510	27,427,161,523
19,206,060,270	15,328,342,304	20,265,556,274	25,433,011,405
30,366,213,095	25,942,622,951	25,562,251,656	25,381,616,734
27,870,257,894	19,652,492,637	19,490,936,349	25,099,681,461
18,504,130,753	17,339,992,165	19,649,631,308	23,963,033,444
13,678,606,692 ..			23,849,009,738
19,271,523,179	17,613,836,210	17,176,781,337	23,460,098,340
19,749,893,536 ..		20,523,285,374	23,170,239,901
27,066,912,635	19,175,196,446	22,157,948,396	23,139,040,000
17,910,858,638	15,027,795,173	16,298,542,028	21,329,395,901
14,393,099,069	18,168,902,154	20,186,496,527	20,176,751,242
14,239,026,630	14,587,496,229	15,839,344,592	18,913,574,371
19,112,739,664	15,929,902,138	20,030,528,043	18,644,723,861
12,795,044,473	12,044,212,904	11,926,953,259	18,525,319,978
13,789,715,133	10,732,366,286	13,707,370,737	18,186,479,173
13,439,023,281	12,814,961,485	12,948,906,289	17,984,816,533

11,662,040,714	11,619,541,940	14,250,726,290	17,930,239,400
12,545,438,605	12,854,985,464	16,002,656,434	17,710,315,006
10,351,932,604	8,876,191,121	11,282,192,605	15,682,926,896
11,670,678,864	12,486,943,506	15,936,800,636	14,674,650,435
17,640,375,722	12,038,829,246	13,191,645,686	14,439,910,353
9,990,370,016	9,593,537,551	12,007,880,439	14,434,619,982
8,977,149,553	10,181,021,770	10,678,749,467	14,425,607,180
15,508,574,820	12,065,138,273	14,358,585,196	14,390,776,644
12,881,352,688	10,267,133,178	12,786,654,366	13,131,168,012
10,351,914,093	10,401,851,851	11,242,275,199	12,978,107,561
26,409,781,215	12,887,072,301	13,254,818,331	12,890,867,539
11,859,013,281	10,766,809,099	11,638,536,834	12,829,541,141
9,413,002,921	9,128,843,109	10,003,670,690	12,409,629,836
11,494,837,053	10,911,698,208	10,154,238,250	12,156,380,425
10,945,070,442	8,647,936,748	9,260,284,938	12,098,450,749
5,827,468,750	8,621,573,608	10,141,859,710	11,518,393,367
8,486,721,917	8,298,695,145	8,758,622,329	10,724,063,458
10,190,529,882	9,253,484,108	10,657,705,536	10,494,632,699
9,750,822,511	7,820,000,000	7,910,000,000	10,465,400,000
5,081,432,924	4,781,000,000	4,895,000,000	10,409,797,649
9,909,548,411	9,401,731,496	9,407,168,702	10,142,111,334
8,247,000,000	8,369,175,126	8,979,966,766	9,892,702,358
8,496,965,842	8,528,202,278	8,741,059,603	9,774,316,692
6,054,806,101	7,268,200,000	8,913,100,000	9,504,797,627
7,132,787,397	6,716,817,572	6,861,546,076	8,749,241,114
5,161,336,170	6,190,991,712	6,959,697,194	8,003,300,198
8,369,637,065	8,550,363,975	8,729,936,136	7,890,000,000
4,860,576,609	4,583,850,368	7,189,481,824	7,814,081,156
6,919,241,412	7,097,198,712	6,970,240,895	7,516,834,160
4,545,674,528	5,379,378,135	5,774,003,744	7,015,206,498
4,621,000,000	5,832,915,387	7,127,792,630	6,785,188,889
6,109,928,000	5,487,083,658	5,920,177,689	6,649,291,076
4,250,000,000	4,979,481,980	5,642,178,580	6,522,732,203
6,673,500,000	5,806,378,000	5,744,414,000	6,491,683,832
5,443,915,121	4,504,549,214	5,082,366,478	6,197,766,119
5,139,957,785	5,439,422,031	5,811,604,052	6,142,169,524
5,687,488,209	5,653,792,720	5,829,933,775	6,074,884,389
4,415,702,800	4,690,062,255	4,794,357,795	5,739,977,477
6,548,530,572	6,584,649,419	6,622,541,529	5,550,771,000
5,623,216,449	4,203,000,000	4,339,000,000	5,179,690,136
6,963,961,726	5,557,245,122	5,350,674,803	4,928,000,000
4,607,300,000	3,660,530,703	3,355,695,364	4,820,499,924
5,320,925,102	4,434,050,000	4,461,650,000	4,660,900,000
3,294,093,485	3,875,409,836	4,368,398,048	4,538,198,499
3,523,185,920	3,670,515,288	4,343,665,075	4,422,276,622
3,978,425,881	3,580,417,067	4,438,778,424	4,239,000,000
3,532,969,035	2,870,624,636	3,140,508,836	3,774,530,616
2,791,960,894	3,163,000,529	3,172,945,645	3,756,023,160
4,007,353,157	4,159,330,370	4,139,192,053	3,442,062,830
2,271,646,188	2,345,294,879	2,588,176,058	2,942,546,781
1,380,188,800	1,856,695,551	2,117,039,512	2,788,022,889
1,985,239,277	1,865,963,015	2,385,950,664	2,774,351,758
1,611,634,332	1,739,781,489	2,026,864,469	2,607,739,837
2,413,251,996	2,489,985,963	2,616,610,911	2,584,463,687
1,922,598,121	2,061,323,854	2,273,225,042	2,576,024,116
2,310,743,218	2,324,870,824	2,306,502,374	2,515,245,776
2,505,458,705	2,257,083,699	2,301,168,187	2,468,754,075
1,870,722,801	1,981,728,141	1,986,014,846	2,355,652,126

2,752,307,016	2,363,156,432	2,139,072,848	2,212,699,747
3,163,416,242	2,498,932,961	2,467,703,911	2,054,489,853
1,789,333,749	1,711,817,182	1,664,310,770	1,864,824,081
1,368,431,037	1,336,957,250	1,397,113,450	1,820,207,626
1,368,625,150	1,224,253,000	1,152,469,074	1,545,400,000
1,258,332,337	1,264,758,198	1,585,472,534	1,486,712,300
1,282,215,407	1,262,973,407	1,381,968,259	1,437,684,815
965,769,128	1,049,110,685	1,128,611,700	1,239,144,502
850,040,500	1,155,147,400	1,292,697,100	1,142,042,926
644,132,489	785,961,959	894,400,000	1,099,385,895
939,000,000	900,628,061	951,804,227	1,065,826,670
967,199,594	795,000,000	799,000,000	1,053,500,000
999,105,339	847,397,850	969,936,525	898,283,478
659,561,789	560,959,528	643,046,733	886,498,371
563,000,000	597,765,363	671,585,343	792,149,701
864,136,713	771,278,111	771,015,889	778,648,667
738,942,556	723,209,111	705,015,370	753,225,963
607,958,616	678,000,000	576,000,000	739,785,122
825,977,889	825,828,704	850,633,310	733,000,000
695,428,852	674,922,481	681,225,963	676,129,407
523,134,897	524,157,261	530,493,353	586,281,767
608,293,860	610,066,629	700,804,286	574,000,000
458,190,185	489,074,333	493,824,407	501,025,303
349,484,428	318,166,563	369,485,199	423,011,844
262,868,600	279,966,700	296,525,300	310,502,100
152,788,700	187,821,029	197,454,053	233,213,523
196,711,500	186,891,100	183,335,100	200,066,900
139,125,482	130,465,372	153,275,913	177,142,135
188,021,169	152,617,500	164,969,100	173,260,300
30,290,220	44,290,952	49,248,811	72,751,801
39,333,572	27,101,076	31,823,519	39,312,017

2012 [YR2012]	2013 [YR2013]	2014 [YR2014]	2015 [YR2015]
..	..	..	..
27,463,220,380	30,014,813,756	26,175,952,942	12,597,210,658
..	..	34,028,119,333	35,799,628,571
#####	16,691,517,000,000	3,890,606,893,347	1,197,789,902,774
6,203,213,121,334	5,155,717,056,271	3,022,827,781,881	1,552,807,652,015
8,560,547,314,679	9,607,224,481,533	2,849,305,322,685	2,089,865,410,868
3,543,983,909,148	3,752,513,503,278	2,151,732,868,243	1,345,383,143,356
2,681,416,108,537	2,808,511,203,185	2,455,993,200,170	1,365,864,126,833
2,662,085,168,499	2,739,818,680,930	1,376,910,811,041	679,289,166,858
2,072,823,157,060	2,130,491,320,659	2,063,662,665,172	1,382,764,027,114
2,465,188,674,415	2,472,806,919,902	1,792,883,225,804	757,999,453,314
1,336,018,949,806	1,361,854,206,549	879,635,084,125	651,757,333,333
1,824,288,757,448	1,842,628,005,830	1,411,333,926,201	861,256,351,277
1,827,637,859,136	1,856,722,121,395	1,459,597,906,913	859,794,177,118
2,210,256,976,945	2,297,128,039,058	2,035,393,459,979	1,152,263,780,658
1,538,194,473,087	1,567,178,619,062	1,298,461,494,903	455,200,045,096
1,222,807,284,485	1,305,604,981,272	934,167,809,302	477,279,647,755
1,186,598,324,462	1,261,981,728,469	890,814,755,233	497,918,109,302
828,946,812,397	866,680,000,367	545,075,908,846	195,541,761,243
873,981,786,532	950,595,270,314	709,182,559,935	382,065,930,308
917,869,910,106	912,524,136,718	531,075,861,047	..
668,043,614,123	688,504,173,431	756,350,347,333	385,874,474,399
497,884,216,569	520,925,468,953	237,029,579,261	122,879,042,002
500,284,003,684	524,201,151,607	499,338,534,779	317,610,719,411
543,880,647,757	578,742,001,488	434,474,616,832	232,439,324,530
735,974,843,360	746,647,127,413	573,817,719,109	386,663,139,403
598,853,401,276	467,414,852,231	352,993,633,221	309,403,880,389
409,425,234,155	430,068,712,972	351,119,102,947	299,096,404,729
510,229,136,227	523,502,127,660	526,319,673,732	301,298,464,861
545,982,375,701	552,025,140,252	441,885,415,806	357,949,199,755
245,670,666,639	239,862,011,450	284,584,522,899	481,066,152,889
381,286,237,848	371,006,299,120	229,629,822,122	189,212,096,470
327,148,899,962	343,584,385,594	378,195,707,612	291,519,596,339
396,332,598,448	366,810,014,300	258,099,015,104	177,911,101,680
397,559,992,407	420,528,737,877	406,521,561,093	199,420,256,050
374,817,974,105	390,427,289,204	403,197,682,886	290,617,006,704
256,706,466,091	269,980,111,643	568,498,937,588	584,711,485,367
216,368,178,659	226,073,492,966	200,696,291,790	195,078,665,828
225,571,857,948	239,389,337,003	244,360,888,751	165,874,330,876
369,659,697,843	380,191,876,349	272,609,288,690	292,774,099,014
262,629,441,493	275,696,879,835	305,529,656,458	332,698,041,031
257,296,579,579	292,489,185,194	207,818,330,724	179,640,210,726
207,376,427,021	209,402,444,996	133,503,411,376	..
314,443,149,443	323,277,158,907	291,459,356,985	242,517,905,162
289,162,118,909	302,510,668,904	308,416,982,140	296,434,003,329
279,372,758,362	288,586,231,502	338,061,963,396	186,829,940,546
267,122,320,057	278,384,332,694	308,142,766,948	296,840,704,102
460,953,836,444	514,966,287,207	482,359,318,768	399,234,547,137
250,092,093,548	271,836,123,724	260,990,299,051	270,556,126,820
224,383,620,830	231,218,567,179	140,118,140,455	102,962,245,247
171,664,638,717	191,549,024,911	186,204,652,922	..
209,058,991,952	209,755,003,251	201,049,665,375	114,567,298,106
127,856,647,108	135,215,704,419	100,948,236,941	97,156,119,150
176,192,886,551	190,521,142,196	162,631,763,879	87,501,423,882
192,648,999,090	201,217,661,646	221,415,572,820	91,030,959,455
175,781,379,051	183,310,146,378	172,885,454,931	101,187,079,463
207,998,568,866	236,634,552,078	199,493,490,983	164,641,483,516

218,000,986,223	234,648,370,497	213,810,022,462	184,388,432,149
155,820,001,920	171,222,025,117 ..		
174,070,025,009	174,161,495,063	206,224,725,275	193,241,108,710
133,355,749,482	149,990,451,022	110,081,248,587	99,290,381,000
186,833,516,484	198,727,747,253	234,648,370,497	175,562,976,175
101,080,738,000	103,134,778,000	57,080,369,368	59,687,373,958
98,266,306,615	106,825,649,872 ..		18,120,714,000,000
93,413,992,956	98,478,349,315	101,726,331,000	87,132,800,000
115,398,371,428	124,912,063,308	126,776,874,217	48,921,877,448
			36,188,521,107
56,485,301,967	57,769,872,075	44,210,806,366	19,676,167,240
87,924,544,000	95,129,659,000	80,656,100,000	43,072,415,017
73,141,000,000	77,148,000,000	56,732,006,512	49,459,296,463
68,125,631,150	72,065,940,086	81,034,395,059	57,784,495,265
53,903,028,252	55,758,744,571	48,545,251,796	52,132,289,700
56,677,961,787	61,739,352,212	75,244,166,773	68,102,618,092
46,352,802,766	48,116,256,926	55,612,228,234	66,903,804,143
65,685,102,555	75,527,984,234	66,327,344,189	53,074,370,486
76,689,583,355	78,938,585,176	82,151,588,419	50,199,117,547
60,613,645,121	61,965,942,057	65,231,032,303	37,160,332,465
69,684,317,719	74,164,435,946	78,813,839,984	69,831,770,871
45,044,112,939	46,251,061,734	49,165,773,100	45,628,320,606
40,742,313,861	45,519,650,911	34,942,948,737	26,052,340,000
68,434,399,083	74,317,806,755	49,904,928,335	54,840,103,850
50,388,454,861	53,851,058,955	65,446,402,659	43,156,708,809
42,847,900,766	46,473,646,002	48,197,218,327	27,009,231,911
50,412,754,822	55,097,343,448	61,445,345,999	63,767,597,194
59,937,797,559	60,269,734,045	47,587,913,059	37,543,361,204
43,868,565,282	46,014,226,808	31,419,072,948	27,059,447,775
51,821,573,338	57,690,453,461	79,356,456,990	56,454,734,397
43,310,721,414	47,648,211,133	50,656,002,896	53,274,304,215
51,264,390,121	57,531,233,351	58,722,323,918	41,402,022,148
46,473,128,286	49,745,088,112	63,067,077,179	80,611,989,527
39,087,748,240	44,333,456,245	23,359,294,149	16,783,714,958
39,954,761,200	44,856,189,500	38,616,536,132	37,517,410,282
28,119,996,053	30,314,363,219	26,224,622,451	21,154,394,546
29,104,437,355	32,348,149,947	55,347,998,648	64,464,547,915
41,939,728,979	47,805,069,495	57,236,013,078	63,767,539,357
25,041,372,222	24,084,572,491	19,756,494,435	11,335,264,967
35,393,148,127	40,415,233,436	43,228,583,935	33,145,096,414
27,040,562,587	31,273,049,200	25,054,230,000	20,844,284,855
30,937,277,606	33,593,843,662	35,826,925,775	31,125,851,064
30,749,308,511	32,539,547,872	33,387,712,766	22,566,956,982
43,031,577,366	51,552,075,902	47,833,413,749	30,916,218,544
23,813,600,000	24,350,930,000	21,736,500,713	13,640,668,374
35,164,210,526	39,197,543,860	35,372,603,446	45,361,678,147
23,043,864,510	25,137,153,149	30,881,166,852	16,209,702,864
25,694,164,489	26,436,159,315	32,996,187,988	23,559,224,762
23,132,149,257	24,599,553,472	27,150,630,607	27,282,581,336
17,226,849,297	18,178,503,835	13,228,244,357	9,744,243,420
27,084,497,540	30,659,338,929	43,524,210,526	37,733,919,936
24,595,319,574	28,965,906,502	27,295,207,928	33,000,198,263
25,503,370,699	28,045,460,442	18,558,343,508	14,186,886,643
22,389,627,294	21,942,597,765	17,178,962,757	14,798,439,527
18,528,506,894	18,496,438,641	18,179,717,776	21,060,901,604
14,218,575,093	15,479,256,845	17,098,342,541	13,993,546,732
18,851,513,891	19,271,168,018	20,616,104,298	19,215,562,179
14,225,310,519	14,851,057,085	14,177,437,982	11,692,287,066

20,536,542,737	20,264,253,974	15,304,363,138	10,051,659,161
17,171,446,922	17,590,745,689	23,003,575,201	21,410,840,909
12,319,784,787	12,776,277,515	11,609,512,940	8,767,143,623
14,800,165,407	14,274,983,016	11,362,272,838	8,724,656,126
21,295,834,133	21,261,305,413	20,002,968,838	14,262,032,471
14,534,278,446	16,018,848,991	16,509,305,828	14,430,573,505
15,846,474,596	16,140,047,012	16,961,127,046	12,930,394,938
19,048,495,519	18,093,829,923	13,897,723,431	10,553,337,673
14,038,383,450	15,449,630,419	16,259,445,053	13,100,058,100
14,686,278,707	14,915,780,539	14,388,360,064	10,888,798,114
12,442,747,897	13,246,412,031	12,803,445,934	10,285,547,954
13,677,930,124	14,085,851,348	13,922,223,234	11,571,141,027
9,745,251,126	10,817,712,139	8,791,353,805	6,792,417,112
12,368,071,039	12,949,854,263	12,786,078,004	10,419,303,761
11,668,685,524	12,129,642,296	12,377,391,463	11,240,000,000
13,016,272,899	12,717,790,501	15,891,049,236	8,553,154,580
10,619,320,049	11,121,465,767	12,715,600,000	12,747,741,540
14,242,490,252	15,451,768,659	16,777,820,333	18,049,954,289
9,919,780,071	10,601,690,872	6,054,750,320	4,584,150,000
9,203,729,739	10,145,944,324	13,268,458,232	16,304,667,807
11,166,063,467	11,947,176,342	11,880,438,824	8,290,986,804
10,532,001,130	10,982,972,256	9,707,432,016	6,440,501,275
10,720,500,000	10,677,200,000	8,776,360,623	6,512,899,540
11,279,400,000	12,476,000,000	11,217,780,149	6,373,201,160
8,152,554,487	9,156,748,441 ..		4,383,076,298,082
7,387,103,675	8,376,667,793	7,428,280,402	6,678,178,340
7,890,216,508	8,452,509,316 ..		11,064,666,282,626
6,028,470,989	5,518,901,971	3,624,000,000	1,569,258,068
10,191,350,120	11,942,230,508	10,843,800,000	14,390,391,264
5,537,537,000	5,573,710,000	4,608,350,000	2,811,489,409
6,473,724,785	7,072,092,406	5,531,000,000	3,765,000,000
..		17,393,103,000,000	2,885,570,309,161
6,433,357,030	6,754,330,155	7,468,096,567	5,697,000,000
7,284,686,576	7,985,349,731	7,983,271,111	7,853,450,374
7,315,702,176	7,622,526,429	8,016,288,347	8,261,034,258
7,633,049,792	8,506,674,783	7,386,891,336	11,749,620,620
5,199,000,000	5,337,000,000	4,587,928,884	4,020,275,298
6,605,139,933	7,335,027,592	9,236,309,138 ..	
12,292,770,631	12,582,122,604	10,673,516,673 ..	
5,456,009,385	6,391,735,894	12,226,514,722	12,673,000,000
4,656,350,000	4,612,500,000	3,350,736,367	4,006,531,188
4,095,000,000	3,764,000,000	5,015,180,977	4,844,223,107
4,087,724,528	4,464,260,489	4,482,880,424	4,087,628,276
4,980,000,000	5,145,757,576	5,240,606,061	4,826,587,058
5,225,533,500	5,724,227,185	6,657,170,923	6,289,165,410
3,164,615,187	3,281,585,236	3,697,351,594	4,251,869,870
4,823,831,657	4,560,713,074	4,377,293,816 ..	
3,866,617,463	4,080,929,201 ..		3,375,611,100,742
3,972,012,571	4,190,143,206	4,469,573,275	4,391,113,415
..		4,848,733,415,524	1,803,652,649,614
3,801,862,611	4,920,343,195	5,391,475,277	4,052,913,386
1,800,077,091	1,865,374,403	3,093,647,227	2,220,380,802
2,886,170,570	3,295,011,381	1,845,561,895	1,742,545,900
2,408,666,379	2,483,396,542	2,614,566,292	1,583,776,760
2,356,495,468	2,613,464,380	3,077,643,314	2,476,746,087
2,861,562,266	2,987,684,170	2,551,126,949	2,505,886,025
2,184,183,758	1,518,565,219	1,551,921,037	2,034,000,000
2,678,494,689	2,526,009,073	1,702,898,940	1,649,142,630

..		10,482,372,109,962	1,832,347,450,962
2,472,384,907	2,714,505,635	2,810,547,884	3,197,225,182
1,751,888,562	1,850,951,315	1,858,121,723	1,574,288,668
1,573,618,750	1,613,705,850	1,944,782,821	3,066,681,387
1,823,692,110	1,798,333,726	1,706,497,950	2,059,258,653
1,436,803,333	1,489,928,889	1,280,133,333	1,437,722,206
1,211,411,704	1,192,925,407	1,422,530,792	907,652,510
1,735,500,000	1,946,500,000 ..		2,433,562,015,516
1,353,632,942	1,455,000,000	2,013,000,000 ..	
910,026,287	898,957,683	1,450,600,000	1,727,000,000
1,134,267,367	1,411,061,261	1,588,000,000	1,364,863,037
989,875,559	1,046,117,071	845,000,000	878,281,508
751,000,000	784,000,000	814,954,307	755,205,756
1,188,900,000	1,410,000,000	833,240,809	659,000,000
799,882,148	842,620,111	911,481,481	1,606,500,000
734,462,667	788,163,889	727,230,735	1,129,164,719
644,000,000	641,000,000	803,589,512	742,432,131
692,933,741	721,207,148	1,156,563,123	1,036,130,507
781,702,874	801,787,556	643,000,000	565,689,765
1,025,125,082	1,059,695,156	1,055,186,196	933,000,000
801,168,622	804,808,526	847,778,185	997,007,926
570,865,941	618,663,922	647,720,707	803,985,809
485,997,988	501,979,277	523,666,347	535,095,846
472,358,251	450,686,354	443,911,052	435,438,217
326,128,700	316,040,600	317,999,400	315,880,811
252,560,557	302,925,490	348,899,846	315,179,700
215,095,100	228,012,200	246,436,300	297,645,400
185,210,500	190,800,800	183,121,300	179,697,900
188,045,662	187,153,601	178,869,341	169,140,539
103,811,959	108,601,538	117,020,382	100,459,783
39,875,751	38,322,360	37,259,690	32,673,278



zdroj: [http://databank.worldbank.org/data/reports.aspx?Code=NY.GDP.MKTP.CD&id=1ff4a498&report\\_nar](http://databank.worldbank.org/data/reports.aspx?Code=NY.GDP.MKTP.CD&id=1ff4a498&report_nar)

2016 hodnoty zdroj

[http://appsso.eurostat.ec.europa.eu/nui/show.do?dataset=nama\\_10\\_](http://appsso.eurostat.ec.europa.eu/nui/show.do?dataset=nama_10_)







ne=Popular-Indicators&populartype=series&ispopular=y#advancedDownloadOptions

\_gdp&lang=en

ČR	HDP	HDP rank	HDI	HDI rank	HPI	HPI rank	EPI
2007	0.465686275		8 0.832763		1 0.368005		2 0.622222
2008	0.381188119		6 0.835505		4 0.399041		4 0.543624
2009	0.168316832		3 0.83432		2.5 0.356643		1 0.697673
2010	0.31		5 0.83432		2.5 0.461112		5 0.826772
2011	0.265		4 0.855615		9 0.492148		6 0.773125
2012	0.136363636		2 0.849462		5 0.390728		3 0.863636
2013	0.116161616		1 0.850267		6.5 0.554219		8 0.848577
2014	0.408163265		7 0.850267		6.5 0.585254		9 0.97191
2015	0.81025641		10 0.851064		8 0.542857		7 0.924029
2016	0.470588235		9 0.857442		10 0.647326		10 0.848315
Slo							
2007	0.892156863		10 0.827343		10 0.463206		2 0.902238
2008	0.658415842		9 0.822875		9 0.478049		3 0.885906
2009	0.138613861		1 0.816568		8 0.48951		4 0.896529
2010	0.58		6 0.812834		6.5 0.507736		5 0.897638
2011	0.405		4 0.811828		5 0.52258		6 0.89082
2012	0.323232323		3 0.802139		4 0.410596		1 0.909091
2013	0.247474747		2 0.812834		6.5 0.552267		7 0.885111
2014	0.428571429		5 0.787234		2 0.56711		8 0.882022
2015	0.651282051		8 0.791604		3 0.578571		9 0.879402
2016	0.588235294		7 0.787136		1 0.596797		10 0.865169
PI							
2007	0.651960784		9 0.726467		1 0.484293		2 0.618595
2008	0.574257426		6 0.737497		2 0.500227		3 0.718121
2009	0.673267327		10 0.748527		3 0.461538		1 0.665026
2010	0.455		4 0.763314		5 0.532095		5 0.503937
2011	0.615		9 0.757396		4 0.548029		6 0.711458
2012	0.318181818		5 0.791444		7 0.529801		4 0.833333
2013	0.237373737		5 0.790323		6 0.579897		8 0.75789
2014	0.494897959		9 0.812834		9 0.595831		9 0.831461
2015	0.615384615		14 0.807487		8 0.557143		7 0.804321
2016	0.50802139		12 0.825739		10 0.627699		10 0.786517
Mad							
2007	0.06372549		1 0.799681		9 0.350839		2 0.761892
2008	0.207920792		5 0.796087		7 0.373591		4 0.845638
2009	0.089108911		2 0.781065		5 0.370629		3 0.771557
2010	0.14		4 0.786982		6 0.419096		5 0.740157
2011	0.25		6 0.796791		8 0.441848		6 0.781223
2012	0.090909091		3 0.801075		10 0.311258		1 0.659091
2013	0.308080808		7 0.770053		3 0.487352		7 0.790889
2014	0.62755102		10 0.764706		1 0.510105		9 0.842697
2015	0.569230769		9 0.771277		4 0.507143		8 0.800554
2016	0.385026738		8 0.767328		2 0.555609		10 0.842697

		ČR Spearman					
EPI rank	HDI	HPI	EPI		HDI aprox m	HDI aprox b	
2	0.213418602	0.321212	0.078788		0.002742179	-4.6707913	
1					HPI aprox m	HPI aprox b	
3					0.031035631	-61.920506	
5					EPI aprox m	EPI aprox b	
4					0.037725968	-75.093795	
8		HPI aprox		EPI aprox			
7		2006 0.356643		2008 0.543624			
10		2009 0.390728		2010 0.826772			
9		2012 0.542857		2012 0.863636			
6				2014 0.97191			
				2016 0.848315			
9					HDI aprox m	HDI aprox b	
5					-0.0044674	9.79341144	
7	Slo Spearman						
8	HDI	HPI	EPI		HPI aprox m	HPI aprox b	
6	0.139818275	0.018182	-0.15152		0.01484349	-29.327678	
10					EPI aprox m	EPI aprox b	
4					-0.00285452	6.63125187	
3							
2		2006 0.48951		2008 0.885906			
1		2009 0.410596		2010 0.897638			
		2012 0.578571		2012 0.909091			
				2014 0.882022	HDI aprox m	HDI aprox b	
2	PL Spearman			2016 0.865169	0.011030205	-21.411154	
5	HDI	HPI	EPI		HPI aprox m	HPI aprox b	
3	0.320078271	0.252693	0.20777		0.015934066	-31.495378	
1					EPI aprox m	EPI aprox b	
4					0.023215788	-45.975492	
10		2006 0.461538		2008 0.718121			
6		2009 0.529801		2010 0.503937			
9		2012 0.557143		2012 0.833333			
8				2014 0.831461			
7				2016 0.786517			
3	Mad Spearman						
10	HDI	HPI	EPI		HDI aprox m	HDI aprox b	
4	-0.76969697	0.915152	0.699091		-0.00359486	8.0145726	
2					HPI aprox m	HPI aprox b	
5					0.022752248	-45.312922	
1					EPI aprox m	EPI aprox b	
6		2006 0.370629		2008 0.845638	0.004832862	-8.9376625	
8.5		2009 0.311258		2010 0.740157			
7		2012 0.507143		2012 0.659091			
8.5				2014 0.842697			
				2016 0.842697			

Hladina významnosti

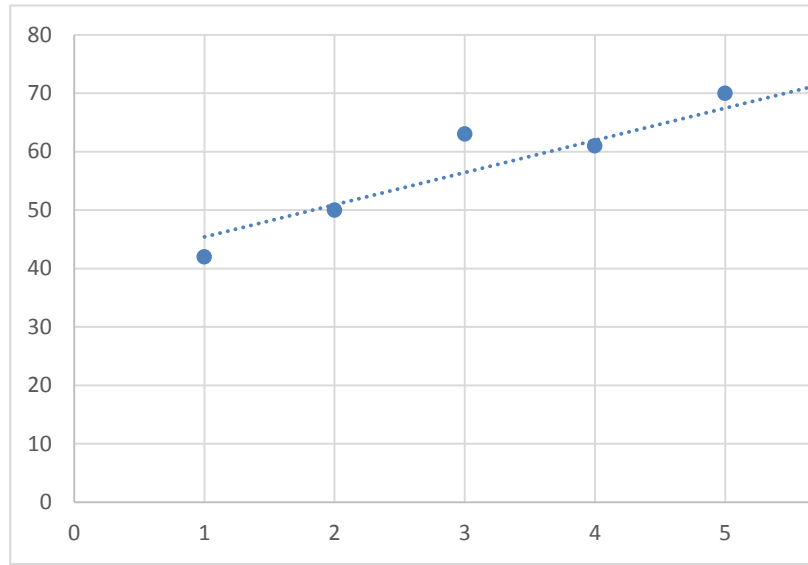
	HDI	HPI	EPI
w	1.542648		
dl+	0.316943		
dl-	-2.45494		
	0.8432		
	2.8432		
	0.135335		
	-4.7		
	-2.7		
	7.389259		

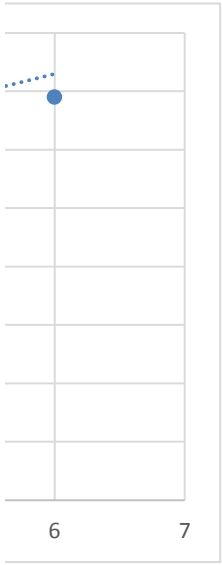
1.542588



x	y
1	42
2	50
3	63
4	61
5	70
6	69

alpha      beta  
5.514286   39.86667





	HDI d	HDI h	HPI d	HPI h	EPI d	EPI h
čr	0.7432	-0.4809	0.791	-0.3868	0.7655	-0.44
slo	0.673	-0.582	0.6302	-0.6301	0.5851	-0.6704
pol	0.8324	-0.4989	0.7097	-0.5335	0.6949	-0.5541
madarsko	0.4263	-0.7724	0.9625	0.4599	0.872	-0.1394