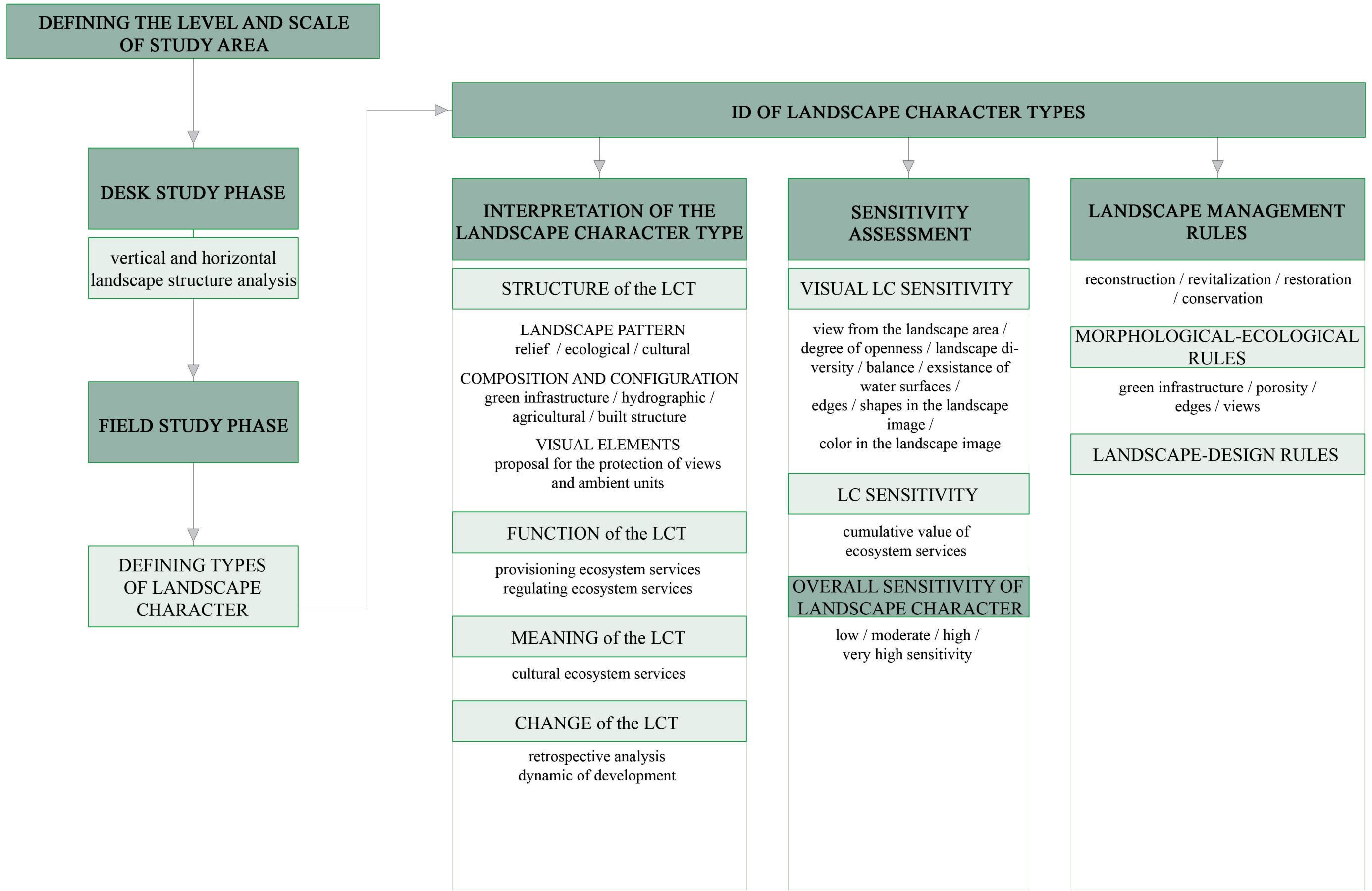


Appendix 1. Schematic representation of the Methodological Approach



DEFINING THE LEVEL AND SCALE OF STUDY AREA

DESK STUDY PHASE

vertical and horizontal
landscape structure analysis

FIELD STUDY PHASE

DEFINING TYPES OF LANDSCAPE CHARACTER

ID OF LANDSCAPE CHARACTER TYPES

INTERPRETATION OF THE LANDSCAPE CHARACTER TYPE

STRUCTURE of the LCT

LANDSCAPE PATTERN
relief / ecological / cultural
COMPOSITION AND CONFIGURATION
green infrastructure / hydrographic /
agricultural / built structure
VISUAL ELEMENTS
proposal for the protection of views
and ambient units

FUNCTION of the LCT

provisioning ecosystem services
regulating ecosystem services

MEANING of the LCT

cultural ecosystem services

CHANGE of the LCT

retrospective analysis
dynamic of development

SENSITIVITY ASSESSMENT

VISUAL LC SENSITIVITY

view from the landscape area /
degree of openness / landscape di-
versity / balance / exsistance of
water surfaces /
edges / shapes in the landscape
image /
color in the landscape image

LC SENSITIVITY

cumulative value of
ecosystem services

OVERALL SENSITIVITY OF LANDSCAPE CHARACTER

low / moderate / high /
very high sensitivity

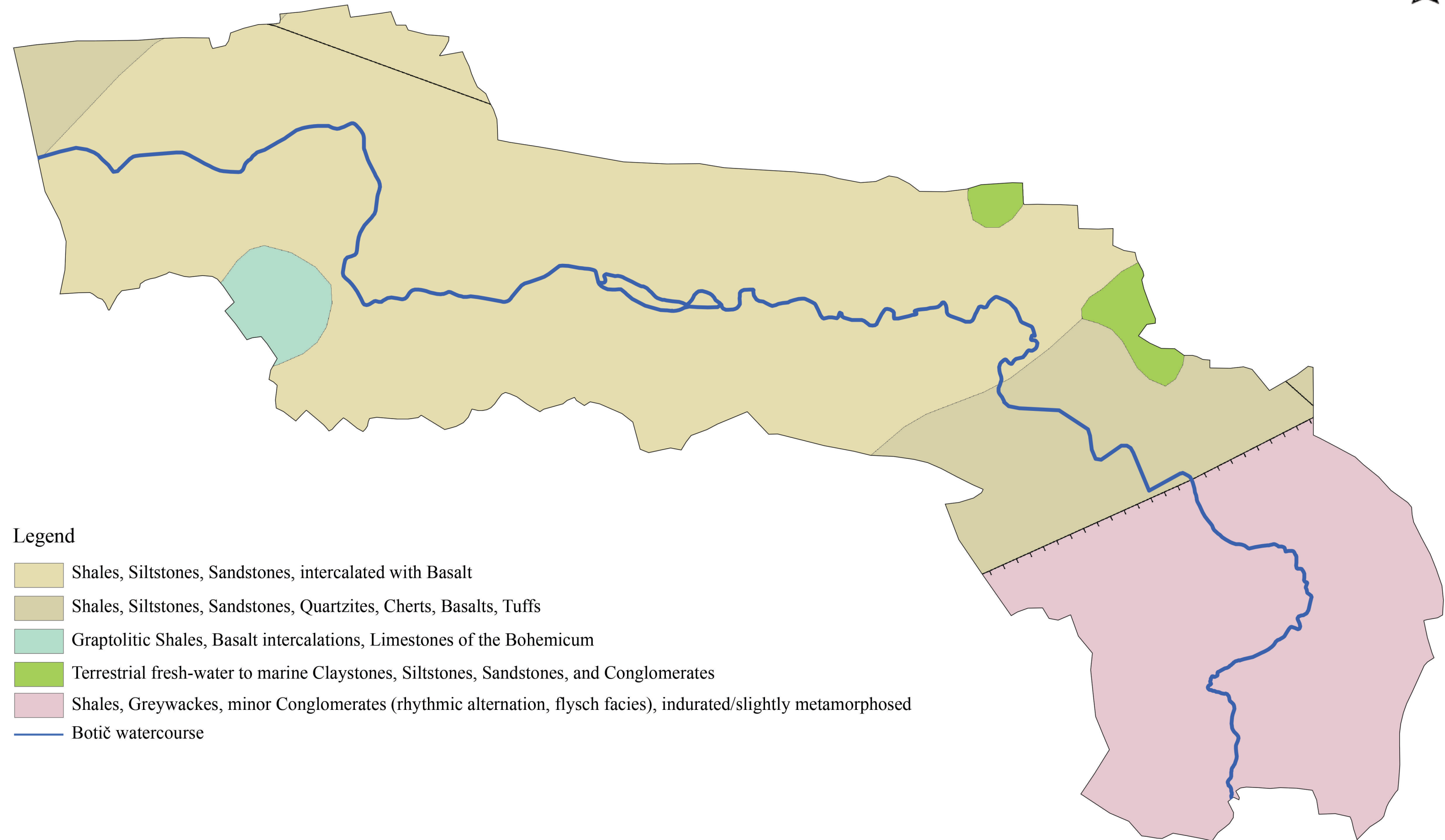
LANDSCAPE MANAGEMENT RULES

reconstruction / revitalization / restoration
/ conservation


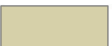


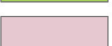

MORPHOLOGICAL-ECOLOGICAL RULES

green infrastructure / porosity /
edges / views

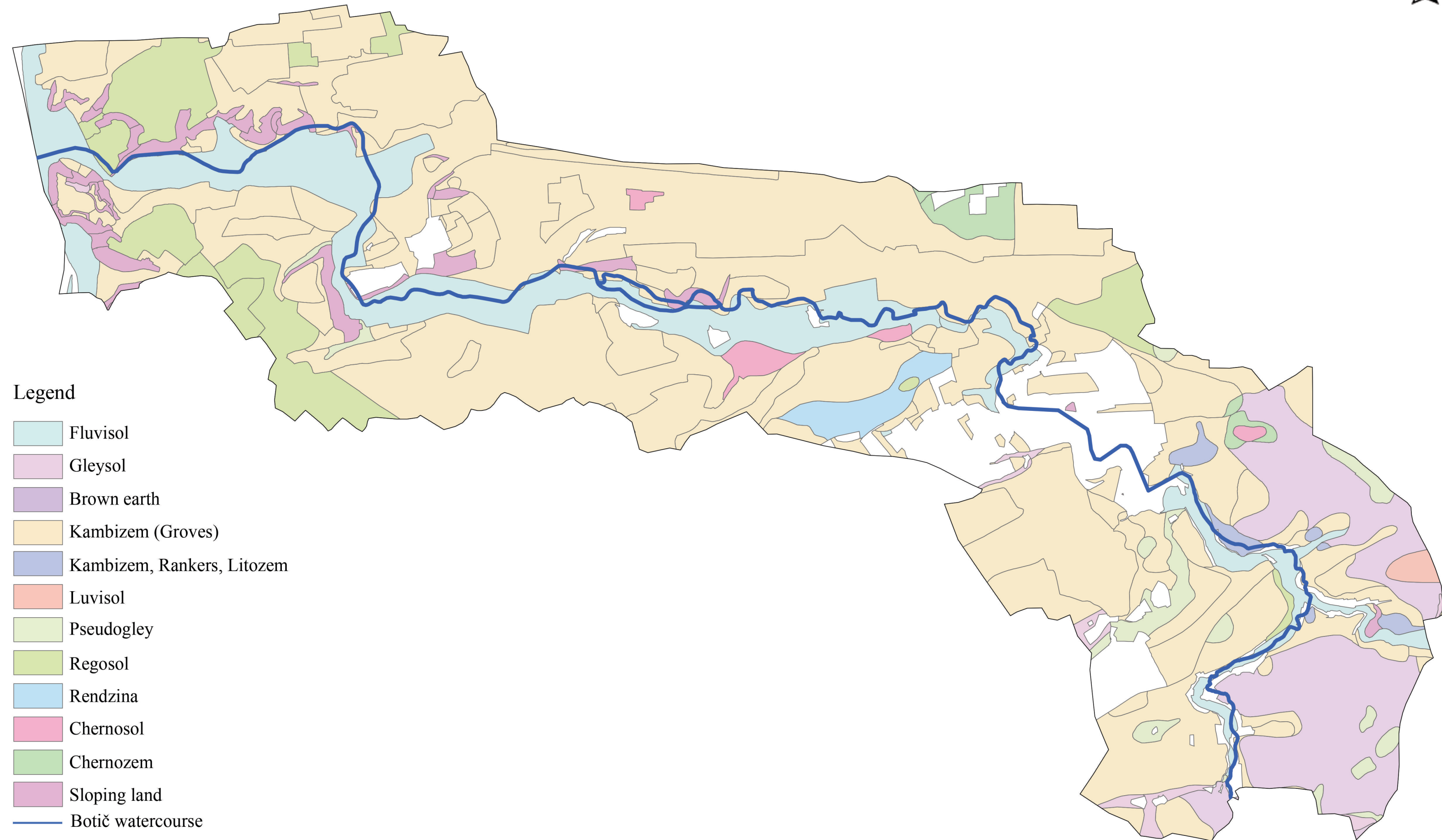
LANDSCAPE-DESIGN RULES



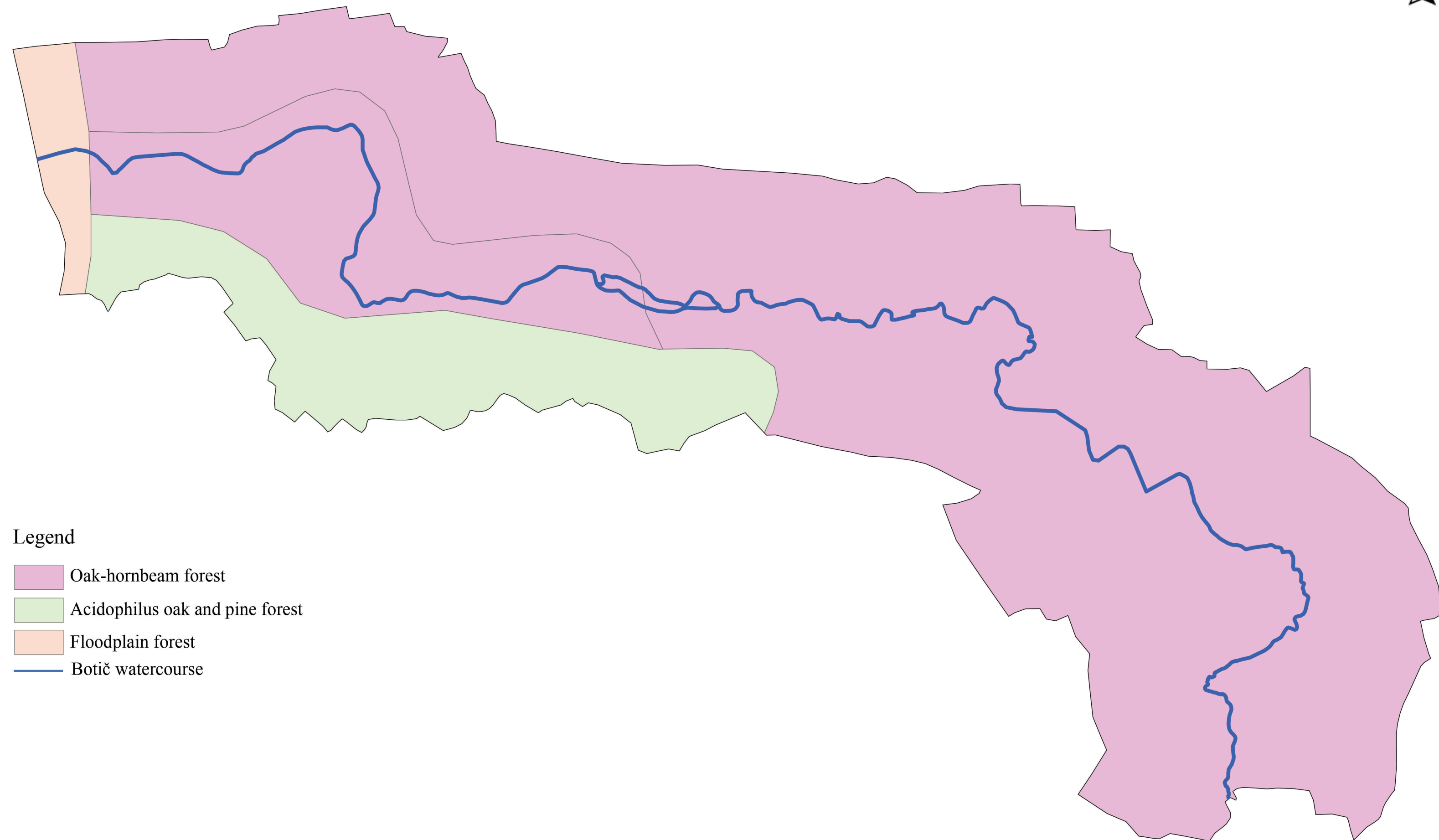
Legend

-  Shales, Siltstones, Sandstones, intercalated with Basalt
-  Shales, Siltstones, Sandstones, Quartzites, Cherts, Basalts, Tuffs
-  Graptolitic Shales, Basalt intercalations, Limestones of the Bohemicum
-  Terrestrial fresh-water to marine Claystones, Siltstones, Sandstones, and Conglomerates
-  Shales, Greywackes, minor Conglomerates (rhythmic alternation, flysch facies), indurated/slightly metamorphosed
-  Botič watercourse









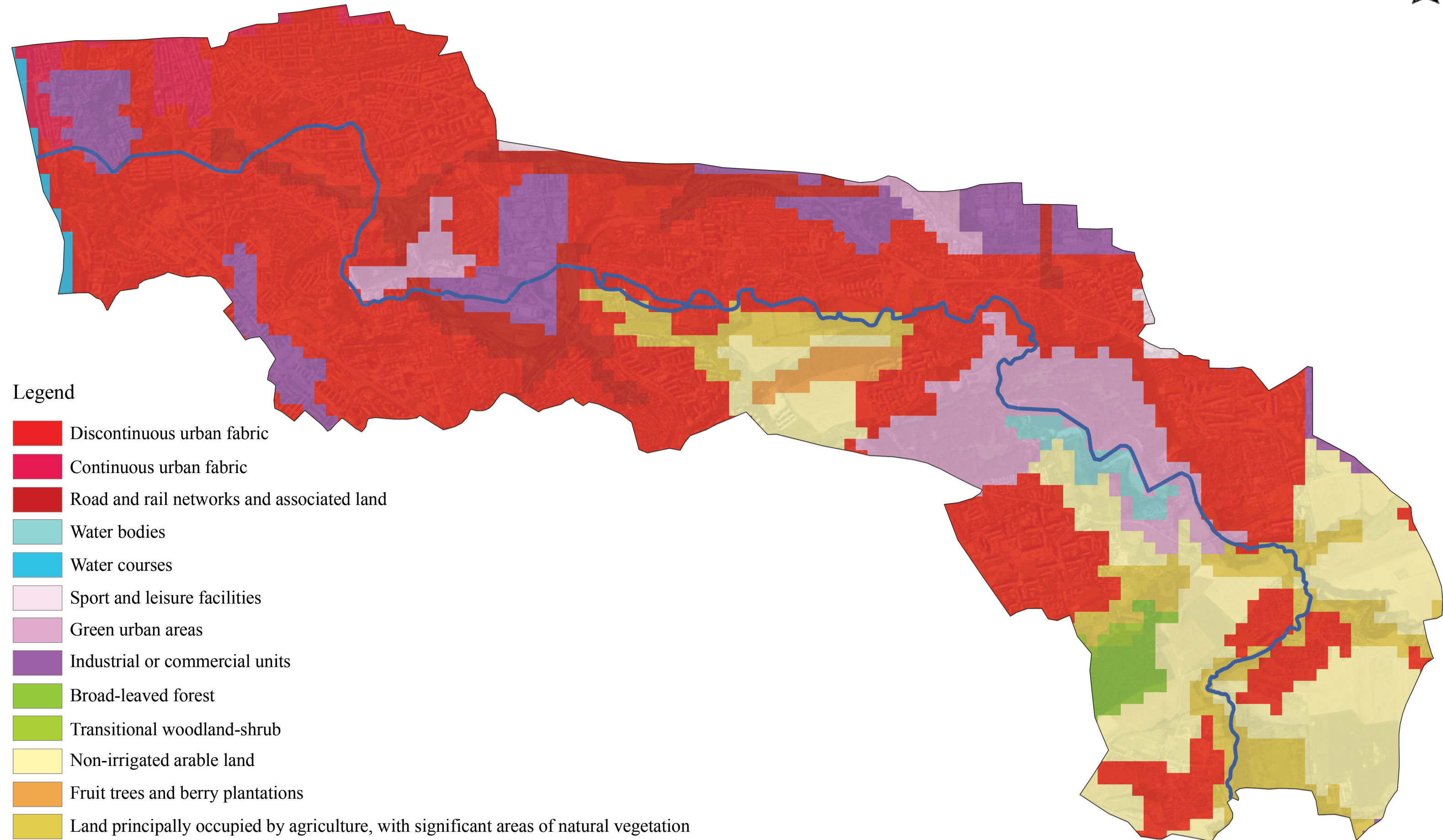
Appendix 4. Potential-Natural Vegetation, Wider zone of researched area












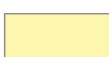




Legend

-  Oak-hornbeam forest
-  Acidophilus oak and pine forest
-  Floodplain forest
-  Botič watercourse

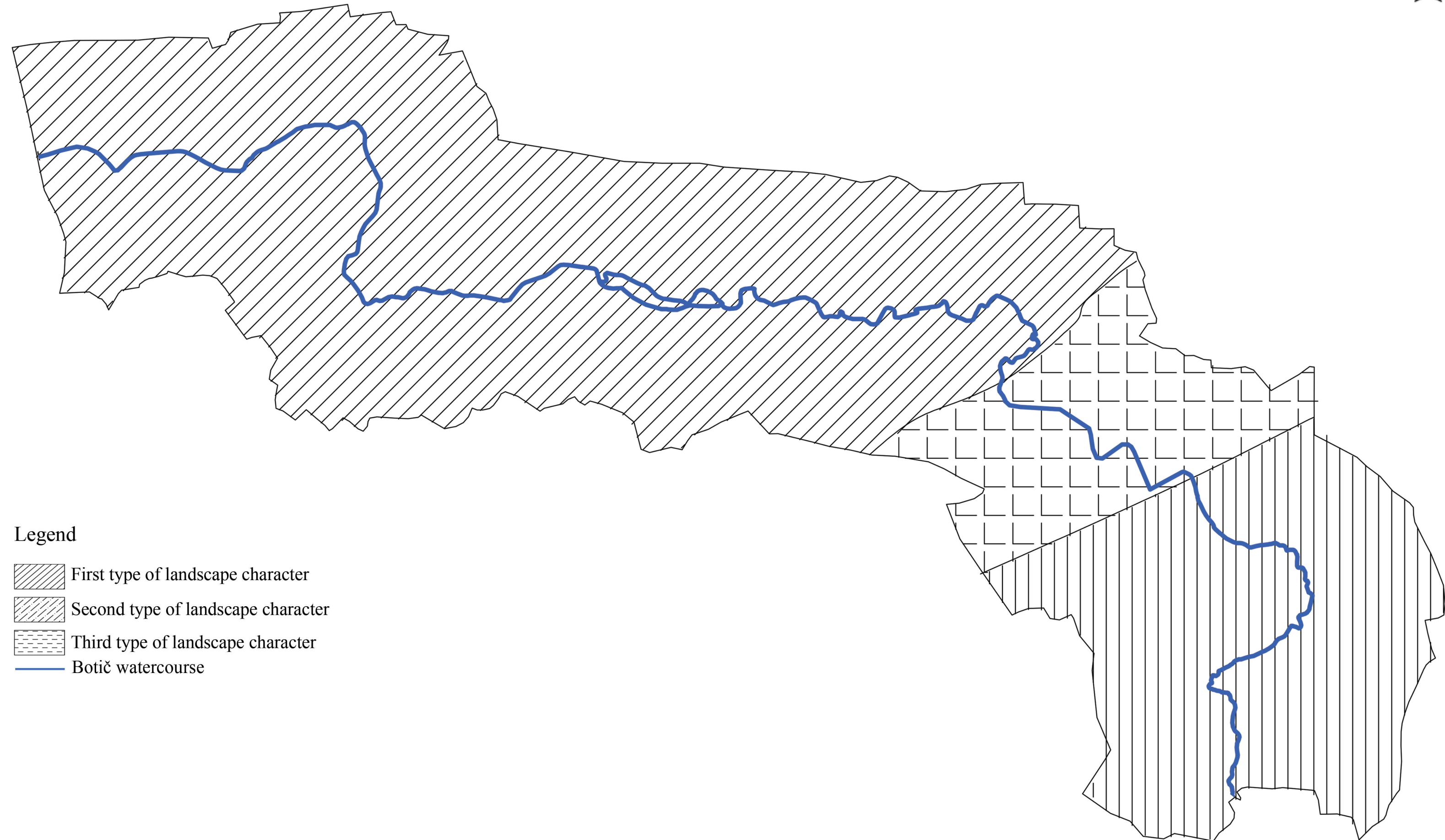




Legend

-  Discontinuous urban fabric
-  Continuous urban fabric
-  Road and rail networks and associated land
-  Water bodies
-  Water courses
-  Sport and leisure facilities
-  Green urban areas
-  Industrial or commercial units
-  Broad-leaved forest
-  Transitional woodland-shrub
-  Non-irrigated arable land
-  Fruit trees and berry plantations
-  Land principally occupied by agriculture, with significant areas of natural vegetation
-  Botič watercourse





Legend

- First type of landscape character
- Second type of landscape character
- Third type of landscape character
- Botič watercourse

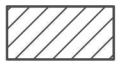













Legend

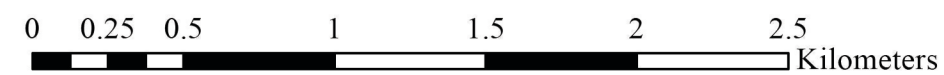
— Botič watercourse

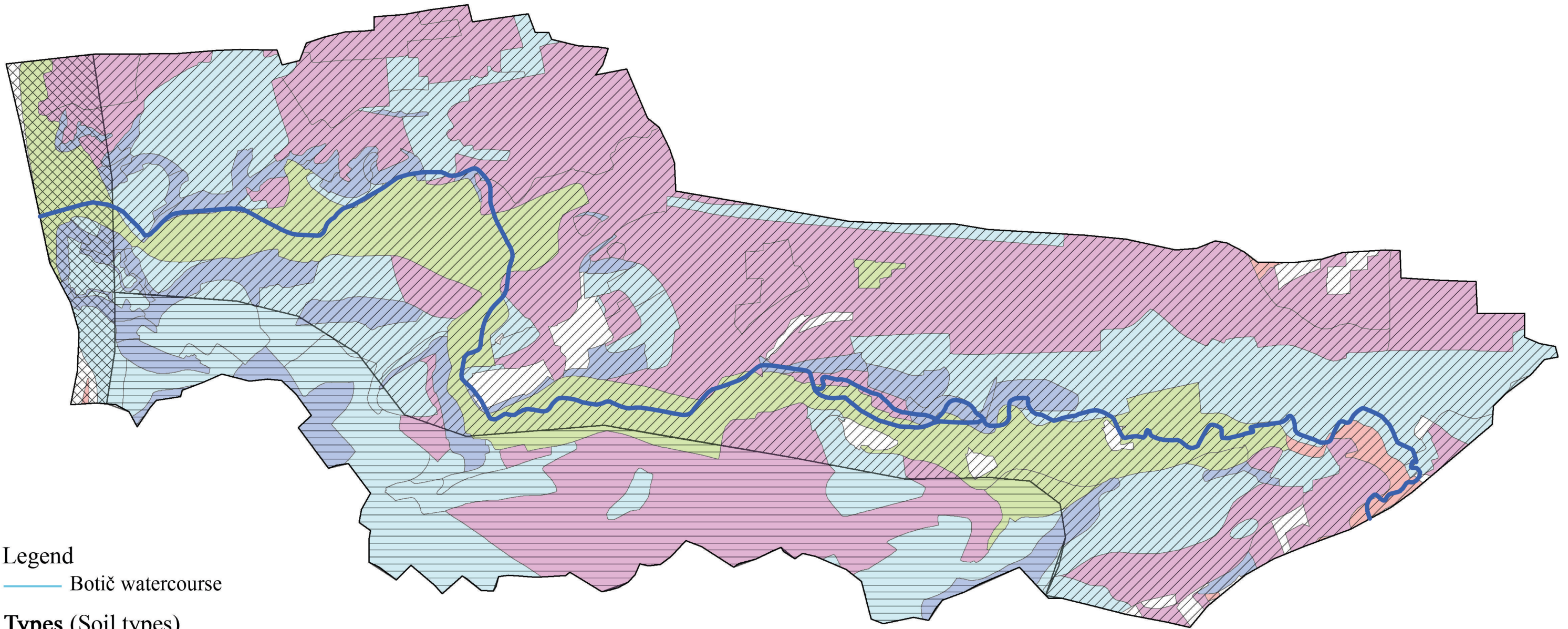
Types (Soil types)

-  Shales, Siltstones, Sandstones, intercalated with Basalt
-  Terrestrial fresh-water to marine Claystones, Siltstones, Sandstones, and Conglomerates
-  Graptolitic Shales, Basalt intercalations, Limestones of the Bohemicum
-  Shales, Siltstones, Sandstones, Quartzites, Cherts, Basalts, Tuffs

Subtypes Slope (° / %)

-  0 - 3° / 0 - 1%
-  3 - 8° / 1 - 2%
-  8 - 17° / 2 - 5%
-  17 - 27° / 5 - 8%
-  27 - 40° / 8 - 11%
-  > 40° / > 11%





Legend

— Botič watercourse

Types (Soil types)

 Oak-hornbeam forest

 Acidophilous oak and pine forest

 Floodplain forest

Subtypes Protection classes

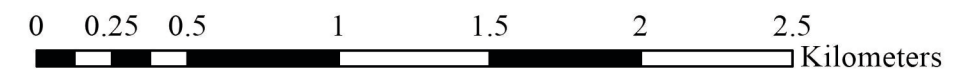
 I

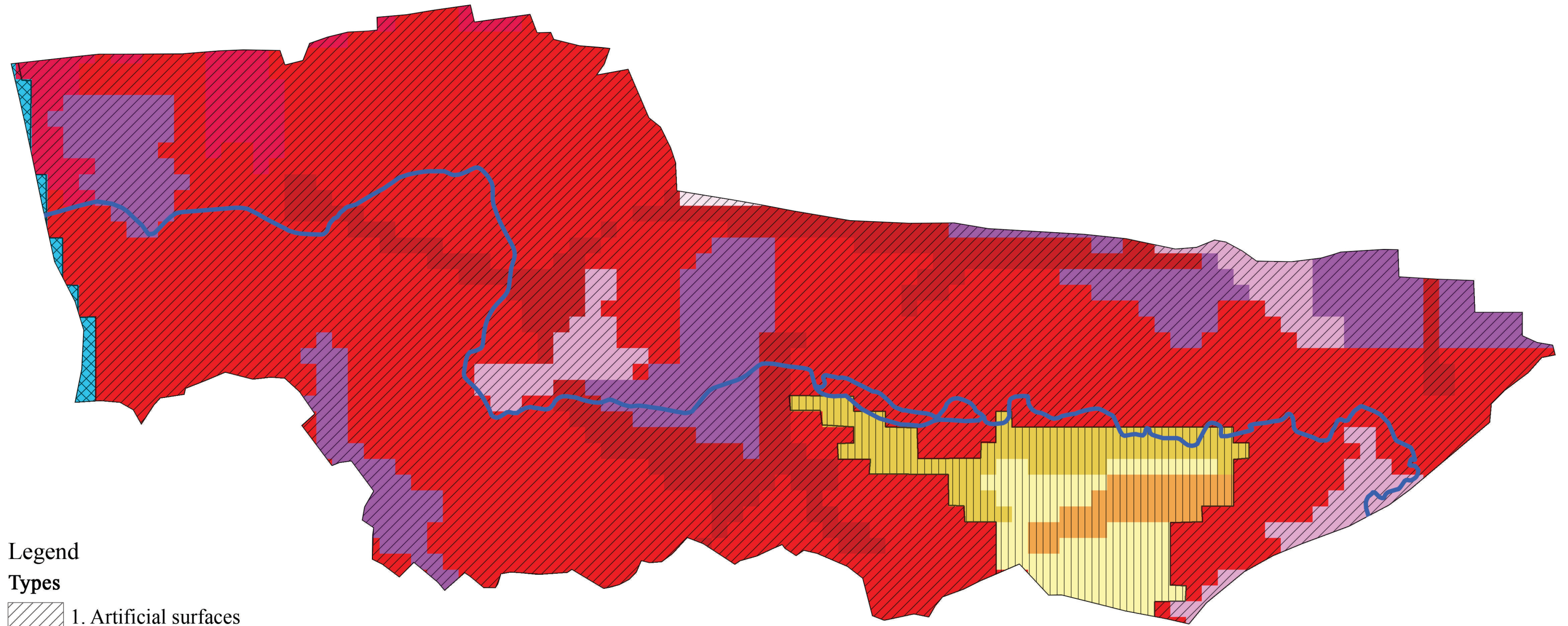
 II

 III

 IV

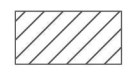


 V









Legend

Types


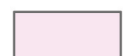
-  1. Artificial surfaces
-  2. Agricultural areas
-  5. Water bodies

Subtypes

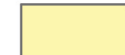
1.1. Urban fabric

-  1.1.1. Continuous urban fabric
-  1.1.2. Discontinuous urban fabric
- 1.2. Industrial, commercial and transport units
-  1.2.1. Industrial or commercial units
-  1.2.2. Road and rail networks and associated land

1.4. Artificial non-agricultural vegetated areas

-  1.4.1. Green urban areas
-  1.4.2. Sport and leisure facilities

2.1. Arable land

-  2.1.1. Non-irrigated arable land



2.2. Permanent crops

-  2.2.2. Fruit trees and berry plantations

2.4. Heterogeneous agricultural areas

-  2.4.3. Land principally occupied by agriculture, with significant areas of natural vegetation

5.1. Inland waters

-  5.1.1. Water courses
-  Botič watercourse

