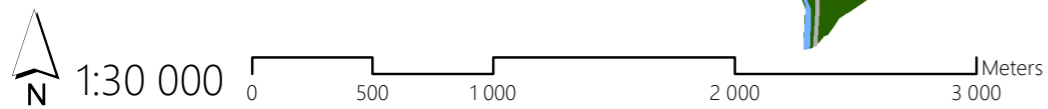
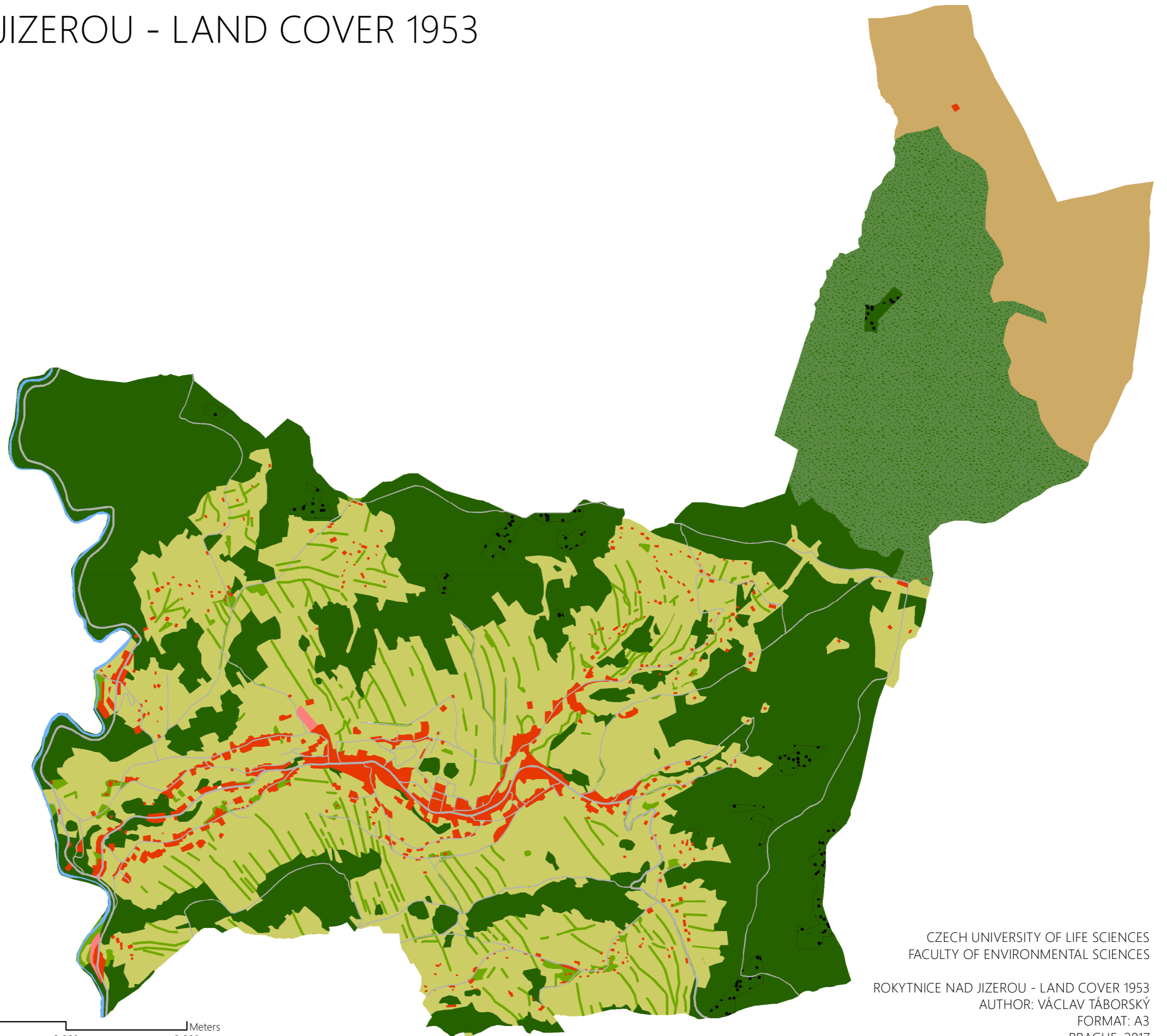


ROKYTNICE NAD JIZEROU - LAND COVER 1953

Land cover category

- Built-up and paved areas
- Other urban areas
- Grasslands
- Forests
- Mountainpine scrubs
- Scattered woody vegetation
- Deforested areas
- Roads
- Tundra
- Water areas



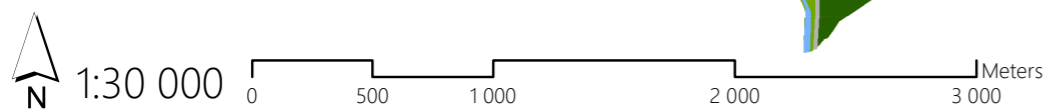
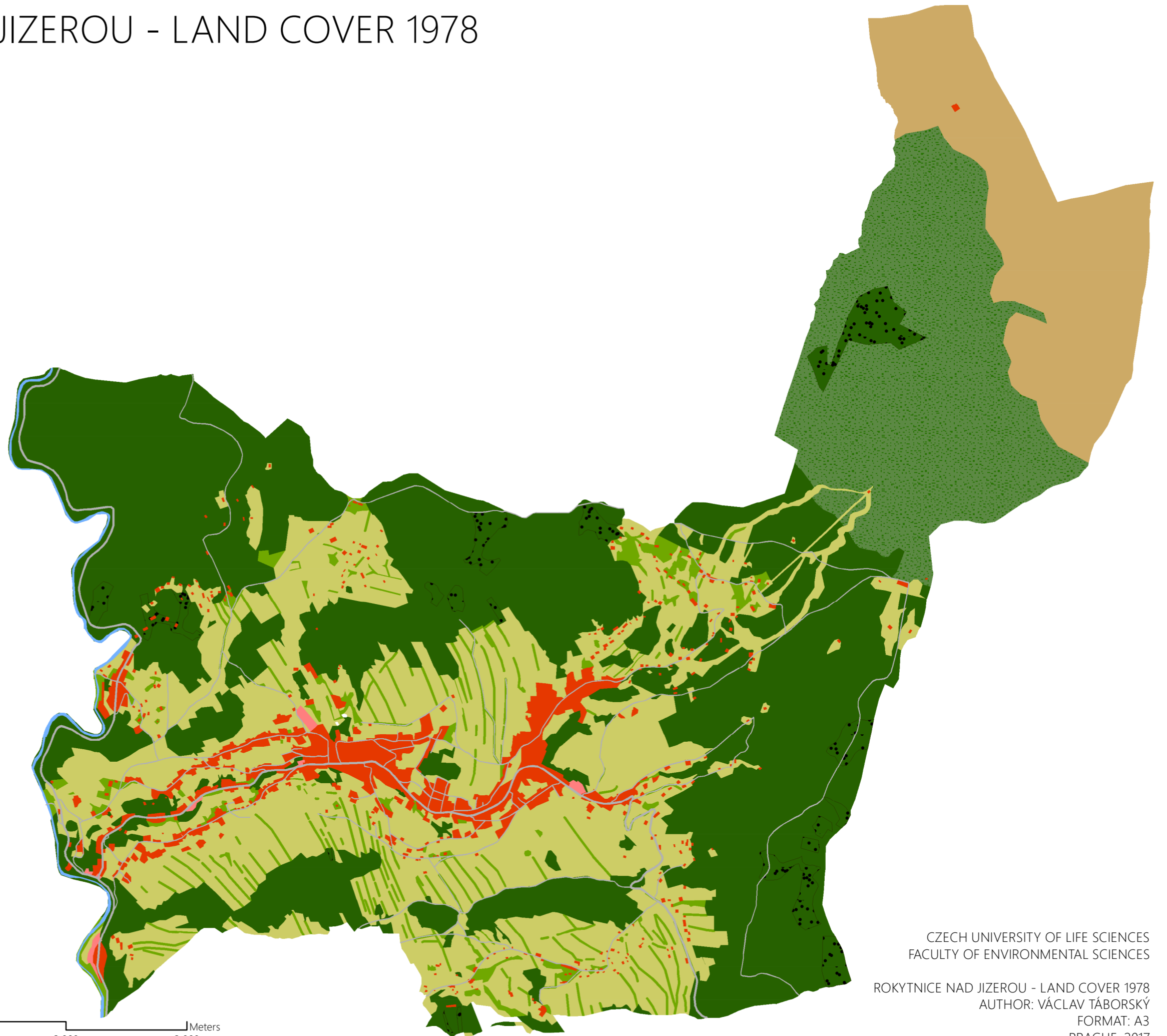
CZECH UNIVERSITY OF LIFE SCIENCES
FACULTY OF ENVIRONMENTAL SCIENCES

ROKYTNICE NAD JIZEROU - LAND COVER 1953
AUTHOR: VÁCLAV TÁBORSKÝ
FORMAT: A3
PRAGUE, 2017

ROKYTNICE NAD JIZEROU - LAND COVER 1978

Land cover category

- Built-up and paved areas
- Other urban areas
- Grasslands
- Forests
- Mountainpine scrubs
- Scattered woody vegetation
- Deforested areas
- Roads
- Tundra
- Water areas



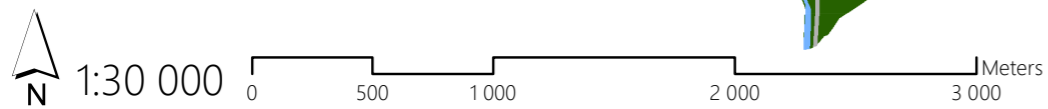
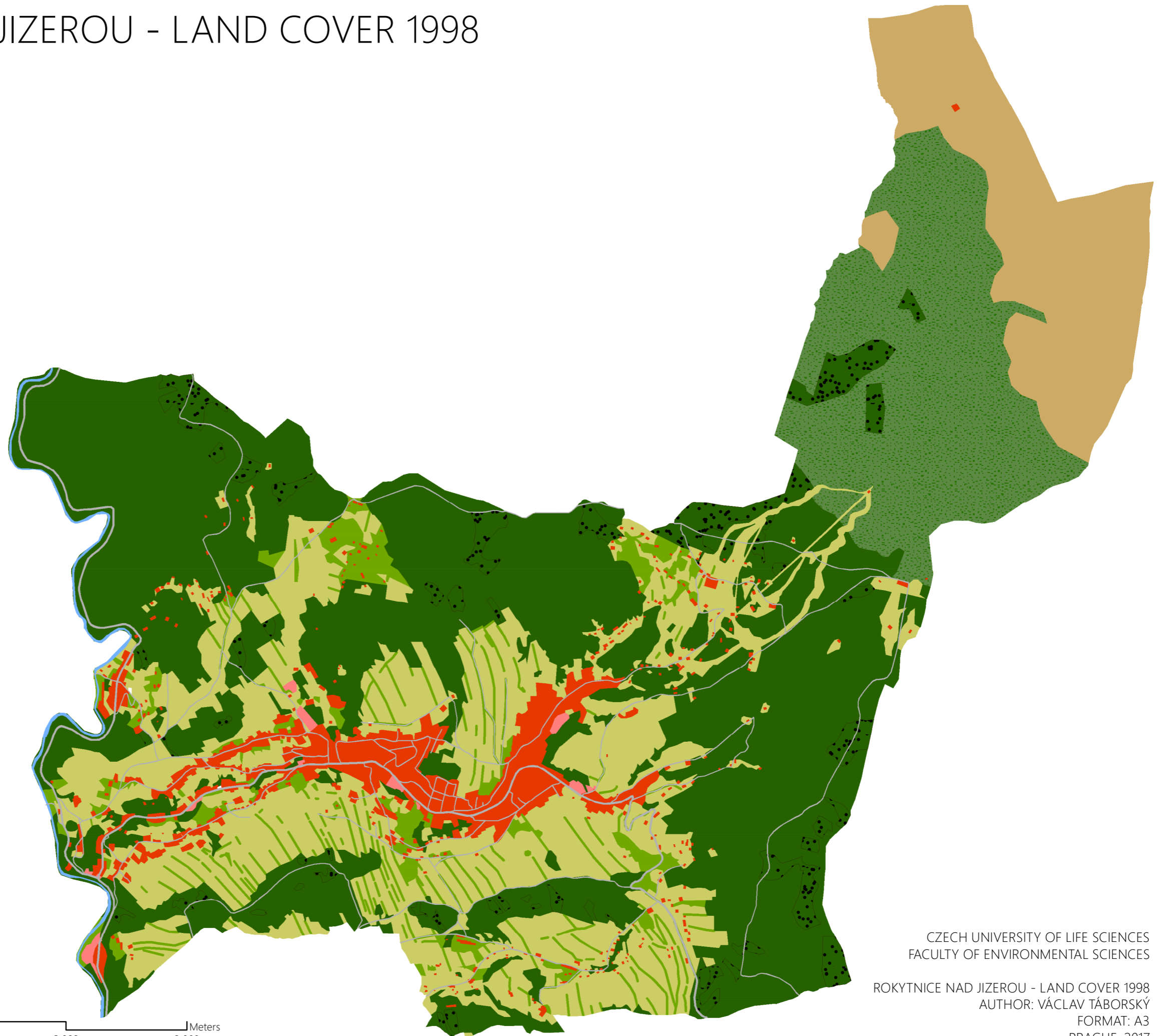
CZECH UNIVERSITY OF LIFE SCIENCES
FACULTY OF ENVIRONMENTAL SCIENCES

ROKYTNICE NAD JIZEROU - LAND COVER 1978
AUTHOR: VÁCLAV TÁBORSKÝ
FORMAT: A3
PRAGUE, 2017

ROKYTNICE NAD JIZEROU - LAND COVER 1998

Land cover category

- Built-up and paved areas
- Other urban areas
- Grasslands
- Forests
- Mountainpine scrubs
- Scattered woody vegetation
- Deforested areas
- Roads
- Tundra
- Water areas



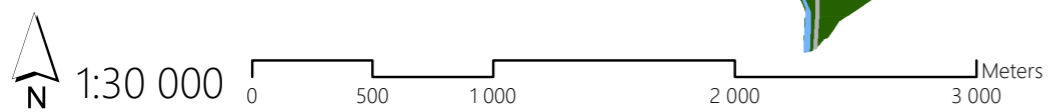
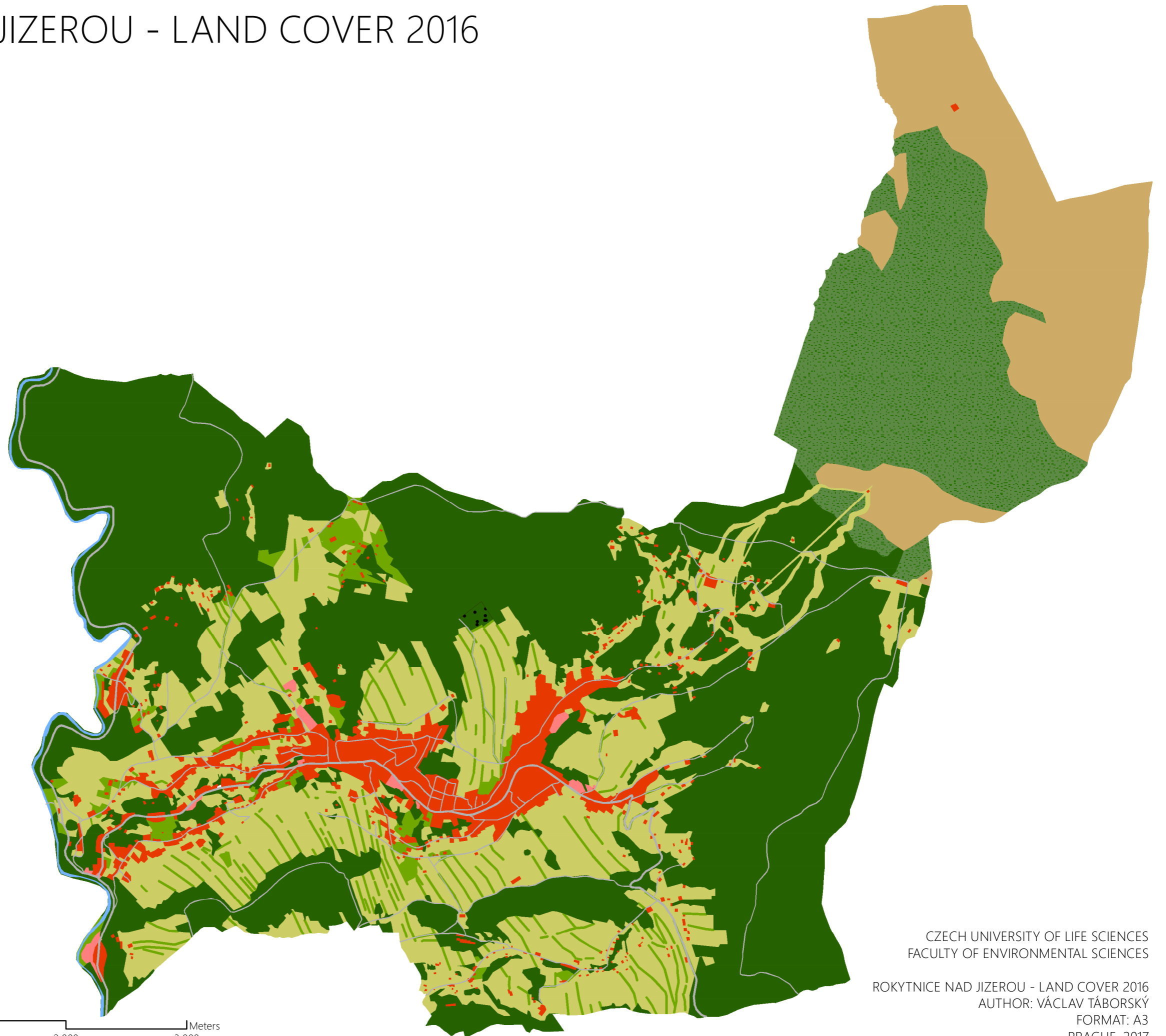
CZECH UNIVERSITY OF LIFE SCIENCES
FACULTY OF ENVIRONMENTAL SCIENCES

ROKYTNICE NAD JIZEROU - LAND COVER 1998
AUTHOR: VÁCLAV TÁBORSKÝ
FORMAT: A3
PRAGUE, 2017

ROKYTNICE NAD JIZEROU - LAND COVER 2016

Land cover category

- Built-up and paved areas
- Other urban areas
- Grasslands
- Forests
- Mountainpine scrubs
- Scattered woody vegetation
- Deforested areas
- Roads
- Tundra
- Water areas



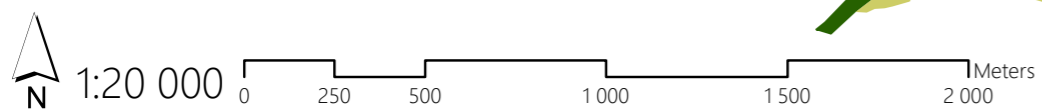
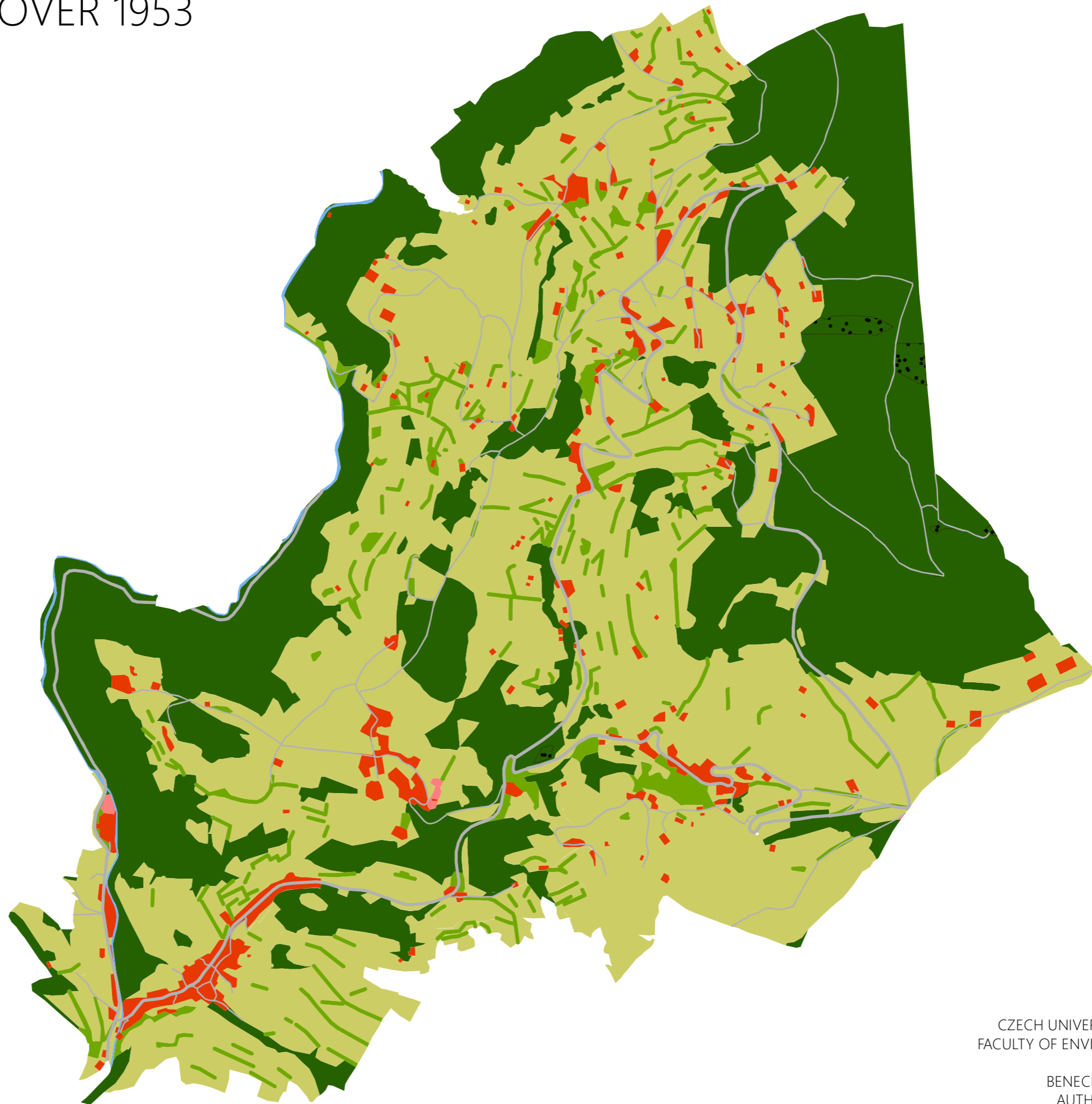
CZECH UNIVERSITY OF LIFE SCIENCES
FACULTY OF ENVIRONMENTAL SCIENCES

ROKYTNICE NAD JIZEROU - LAND COVER 2016
AUTHOR: VÁCLAV TÁBORSKÝ
FORMAT: A3
PRAGUE, 2017

BENECKO - LAND COVER 1953

Land cover category

- Built-up and paved areas
- Other urban areas
- Grasslands
- Forests
- Scattered woody vegetation
- Deforested areas
- Roads
- Water areas



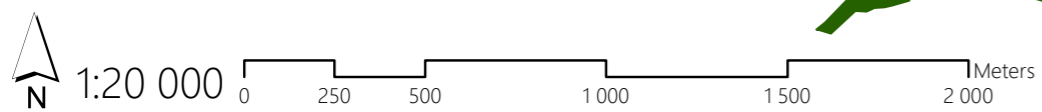
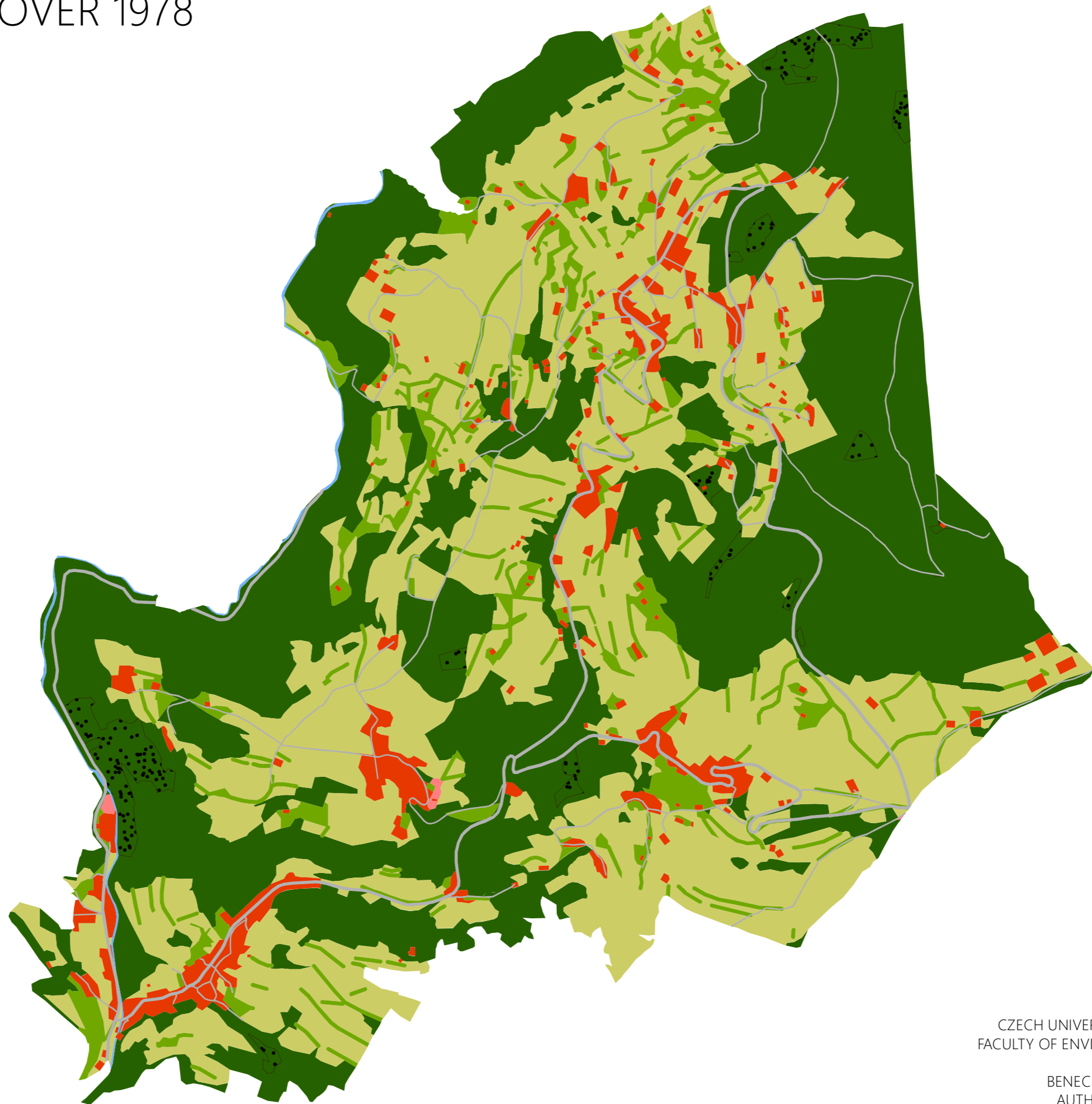
CZECH UNIVERSITY OF LIFE SCIENCES
FACULTY OF ENVIRONMENTAL SCIENCES

BENECKO - LAND COVER 1953
AUTHOR: VÁCLAV TÁBORSKÝ
FORMAT: A3
PRAGUE, 2017

BENECKO - LAND COVER 1978

Land cover category

-  Built-up and paved areas
-  Other urban areas
-  Grasslands
-  Forests
-  Scattered woody vegetation
-  Deforested areas
-  Roads
-  Water areas



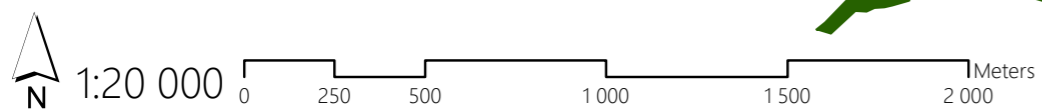
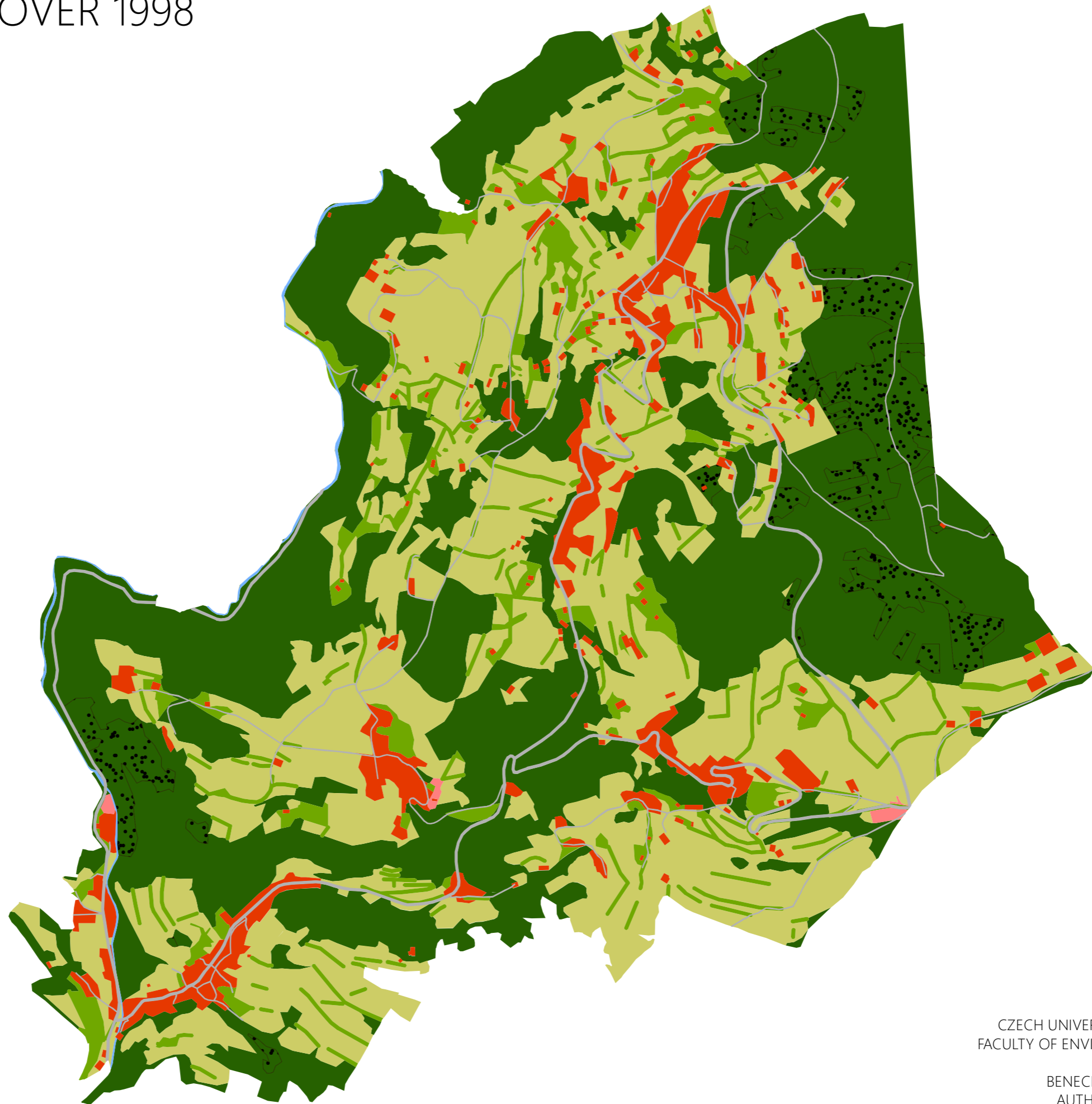
CZECH UNIVERSITY OF LIFE SCIENCES
FACULTY OF ENVIRONMENTAL SCIENCES

BENECKO - LAND COVER 1978
AUTHOR: VÁCLAV TÁBORSKÝ
FORMAT: A3
PRAGUE, 2017

BENECKO - LAND COVER 1998

Land cover category

-  Built-up and paved areas
-  Other urban areas
-  Grasslands
-  Forests
-  Scattered woody vegetation
-  Deforested areas
-  Roads
-  Water areas



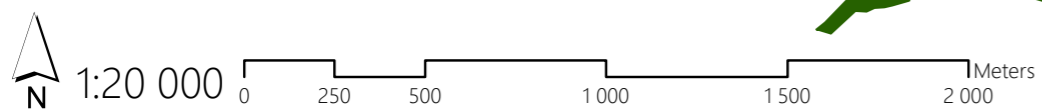
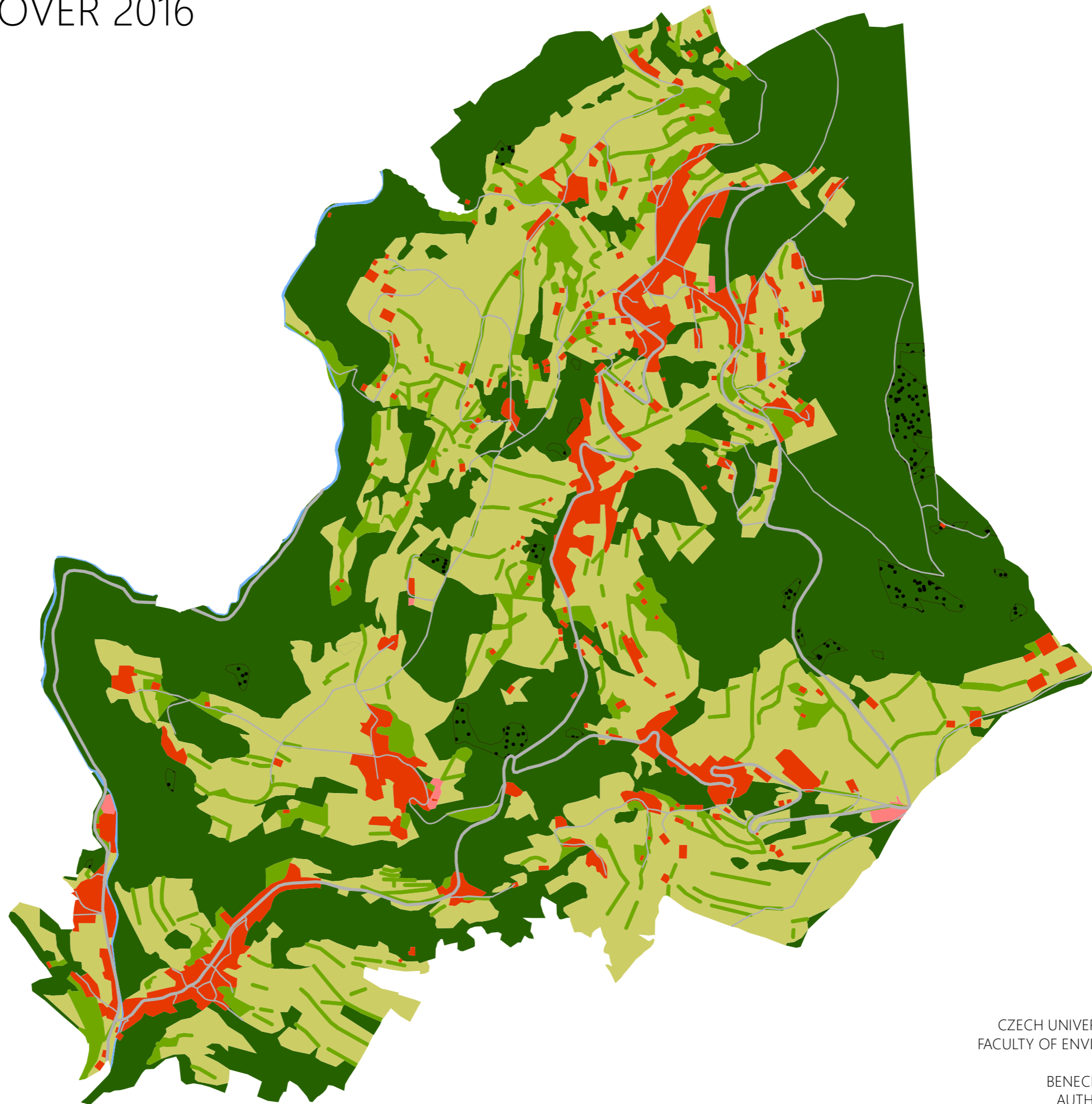
CZECH UNIVERSITY OF LIFE SCIENCES
FACULTY OF ENVIRONMENTAL SCIENCES

BENECKO - LAND COVER 1998
AUTHOR: VÁCLAV TÁBORSKÝ
FORMAT: A3
PRAGUE, 2017

BENECKO - LAND COVER 2016

Land cover category

-  Built-up and paved areas
-  Other urban areas
-  Grasslands
-  Forests
-  Scattered woody vegetation
-  Deforested areas
-  Roads
-  Water areas



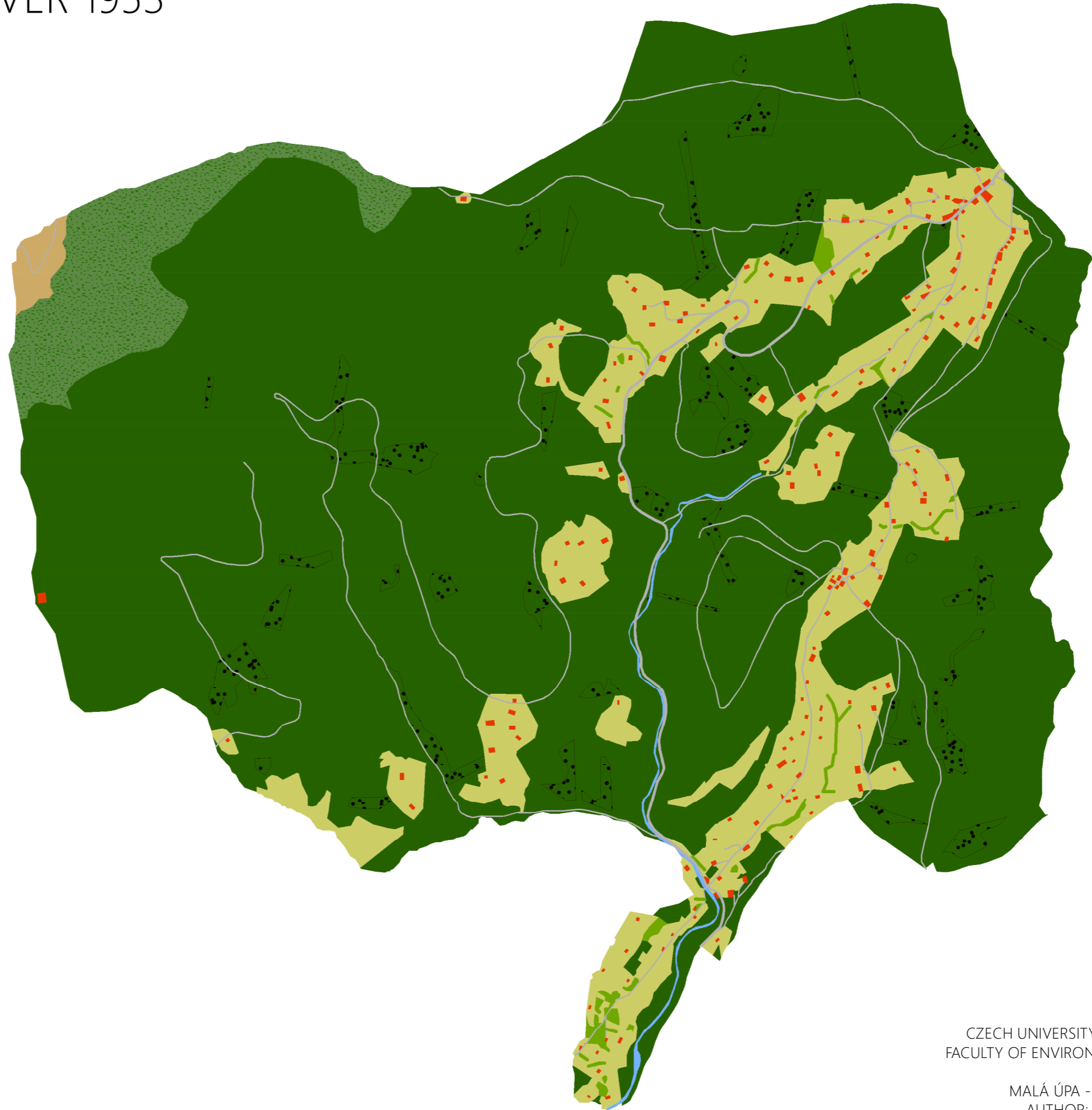
CZECH UNIVERSITY OF LIFE SCIENCES
FACULTY OF ENVIRONMENTAL SCIENCES

BENECKO - LAND COVER 2016
AUTHOR: VÁCLAV TÁBORSKÝ
FORMAT: A3
PRAGUE, 2017

MALÁ ÚPA - LAND COVER 1953

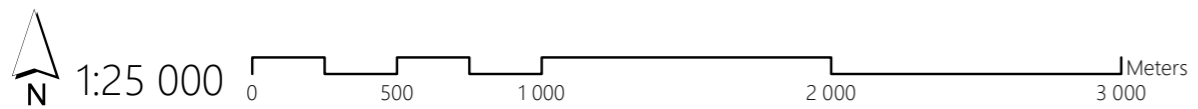
Land cover category

-  Built-up and paved areas
-  Other urban areas
-  Grasslands
-  Forests
-  Mountainpine scrubs
-  Scattered woody vegetation
-  Deforested areas
-  Roads
-  Tundra
-  Water areas



CZECH UNIVERSITY OF LIFE SCIENCES
FACULTY OF ENVIRONMENTAL SCIENCES

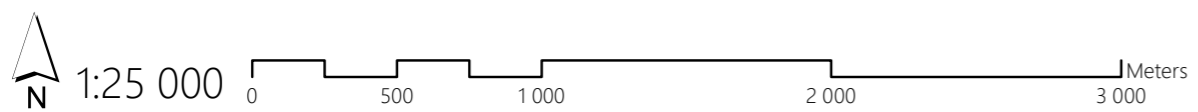
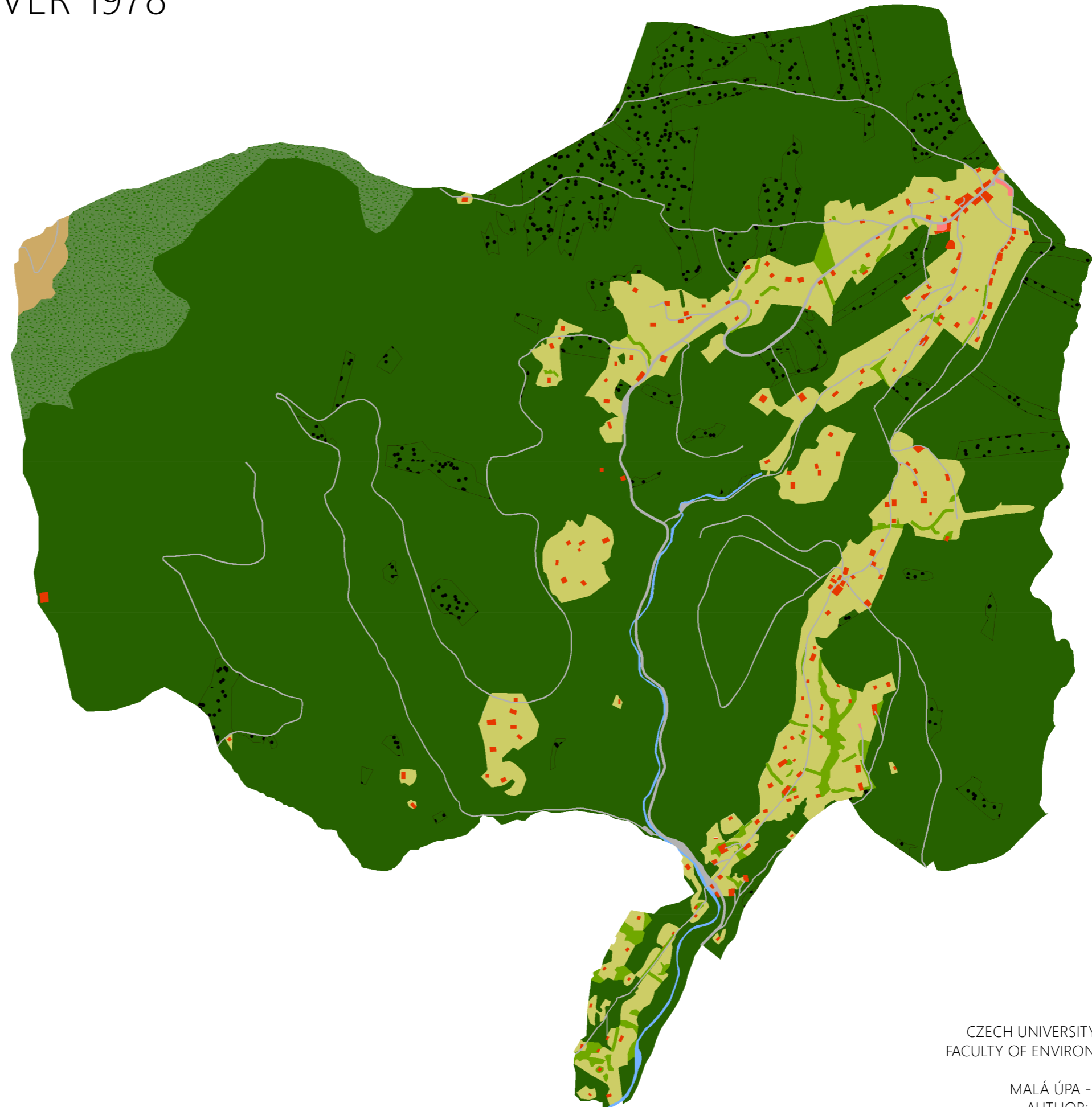
MALÁ ÚPA - LAND COVER 1953
AUTHOR: VÁCLAV TÁBORSKÝ
FORMAT: A3
PRAGUE, 2017



MALÁ ÚPA - LAND COVER 1978

Land cover category

- Built-up and paved areas
- Other urban areas
- Grasslands
- Forests
- Mountainpine scrubs
- Scattered woody vegetation
- Deforested areas
- Roads
- Tundra
- Water areas








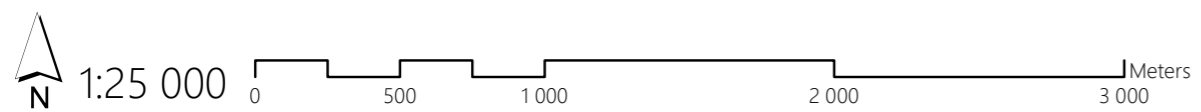
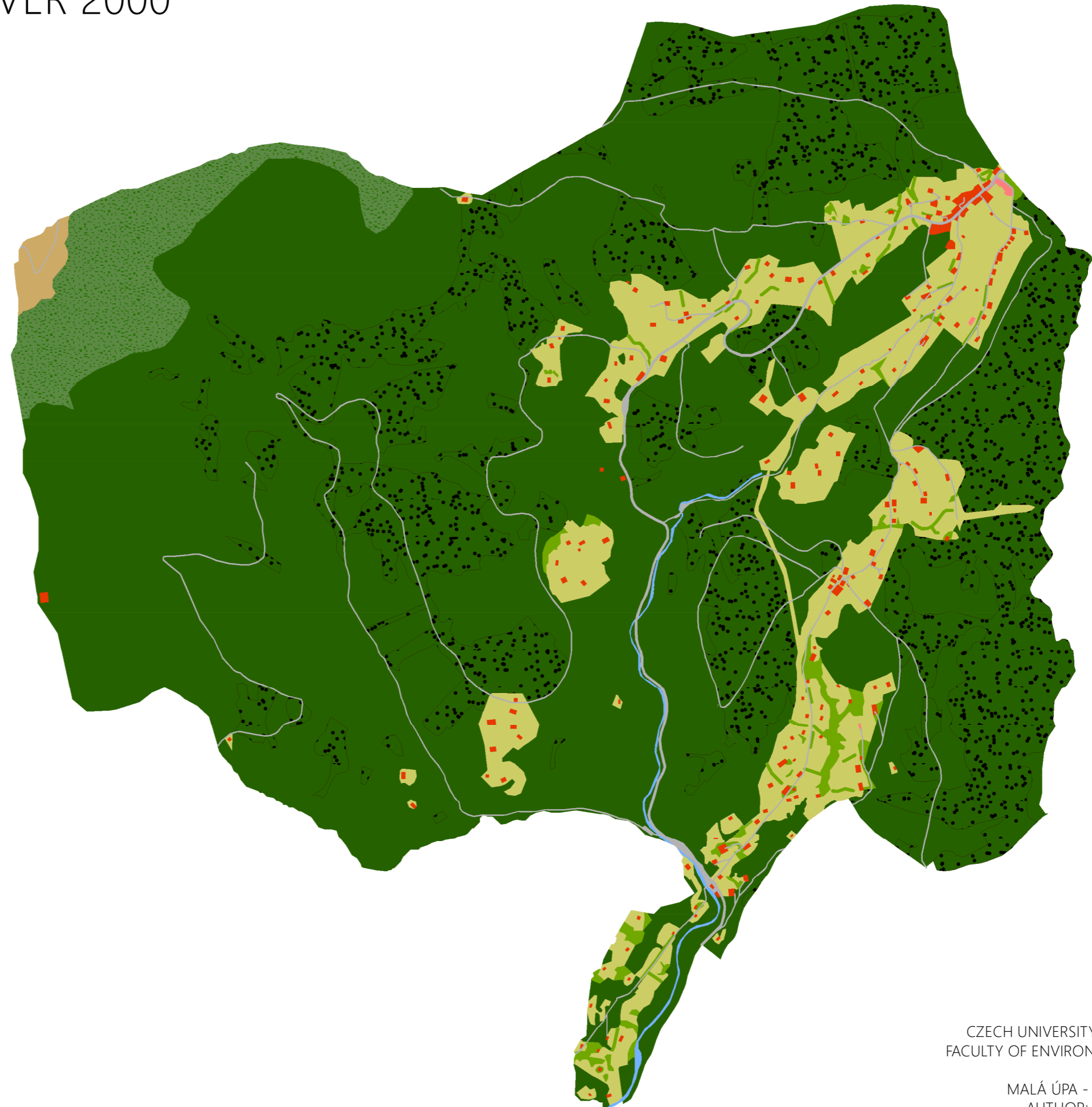
CZECH UNIVERSITY OF LIFE SCIENCES
FACULTY OF ENVIRONMENTAL SCIENCES

MALÁ ÚPA - LAND COVER 1978
AUTHOR: VÁCLAV TÁBORSKÝ
FORMAT: A3
PRAGUE, 2017

MALÁ ÚPA - LAND COVER 2000

Land cover category

-  Built-up and paved areas
-  Other urban areas
-  Grasslands
-  Forests
-  Mountainpine scrubs
-  Scattered woody vegetation
-  Deforested areas
-  Roads
-  Tundra
-  Water areas



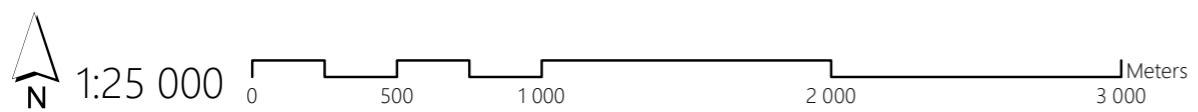
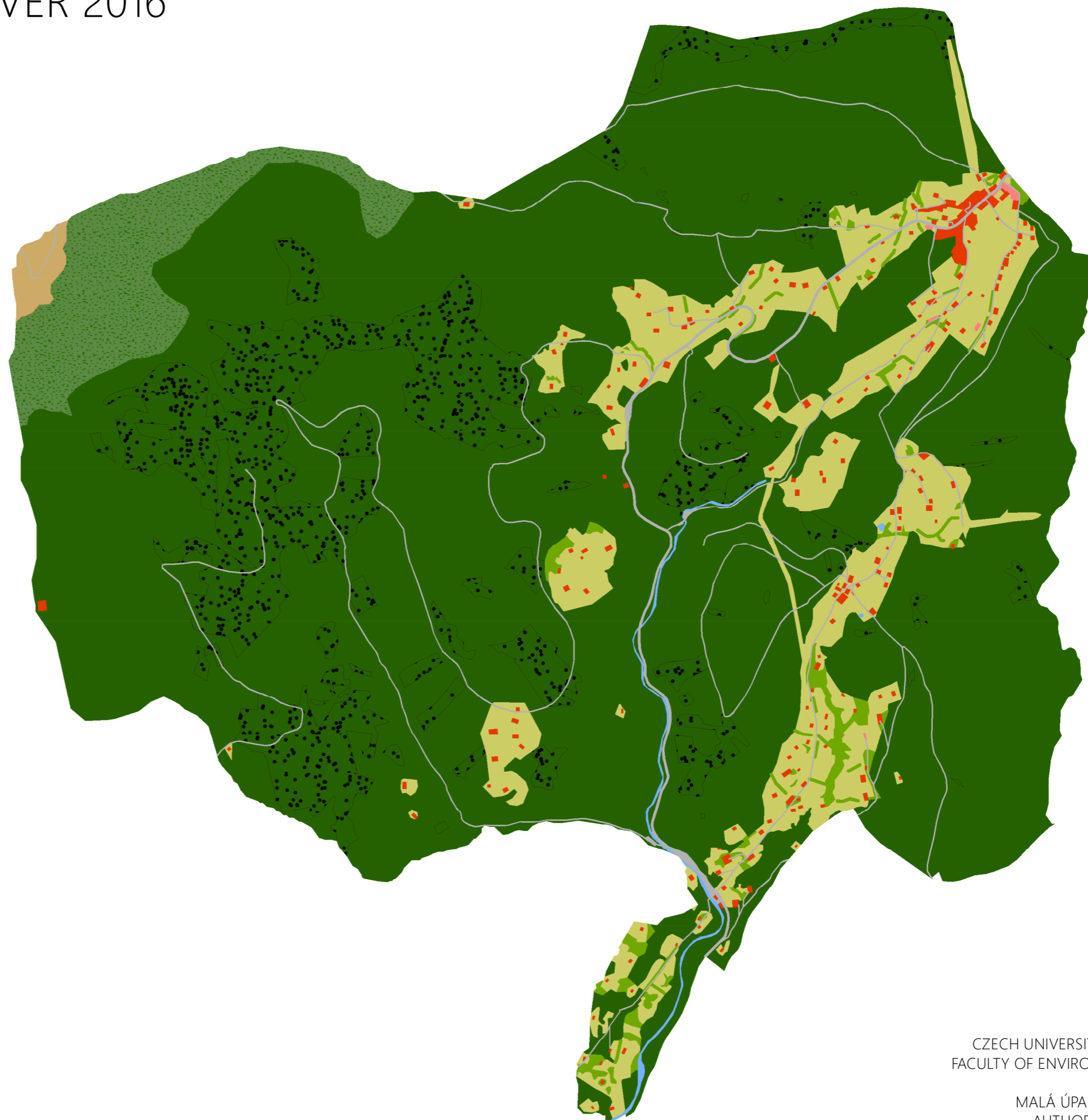
CZECH UNIVERSITY OF LIFE SCIENCES
FACULTY OF ENVIRONMENTAL SCIENCES

MALÁ ÚPA - LAND COVER 2000
AUTHOR: VÁCLAV TÁBORSKÝ
FORMAT: A3
PRAGUE, 2017

MALÁ ÚPA - LAND COVER 2016

Land cover category

-  Built-up and paved areas
-  Other urban areas
-  Grasslands
-  Forests
-  Mountainpine scrubs
-  Scattered woody vegetation
-  Deforested areas
-  Roads
-  Tundra
-  Water areas

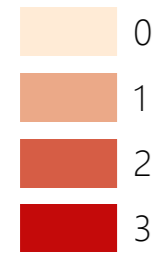


CZECH UNIVERSITY OF LIFE SCIENCES
FACULTY OF ENVIRONMENTAL SCIENCES

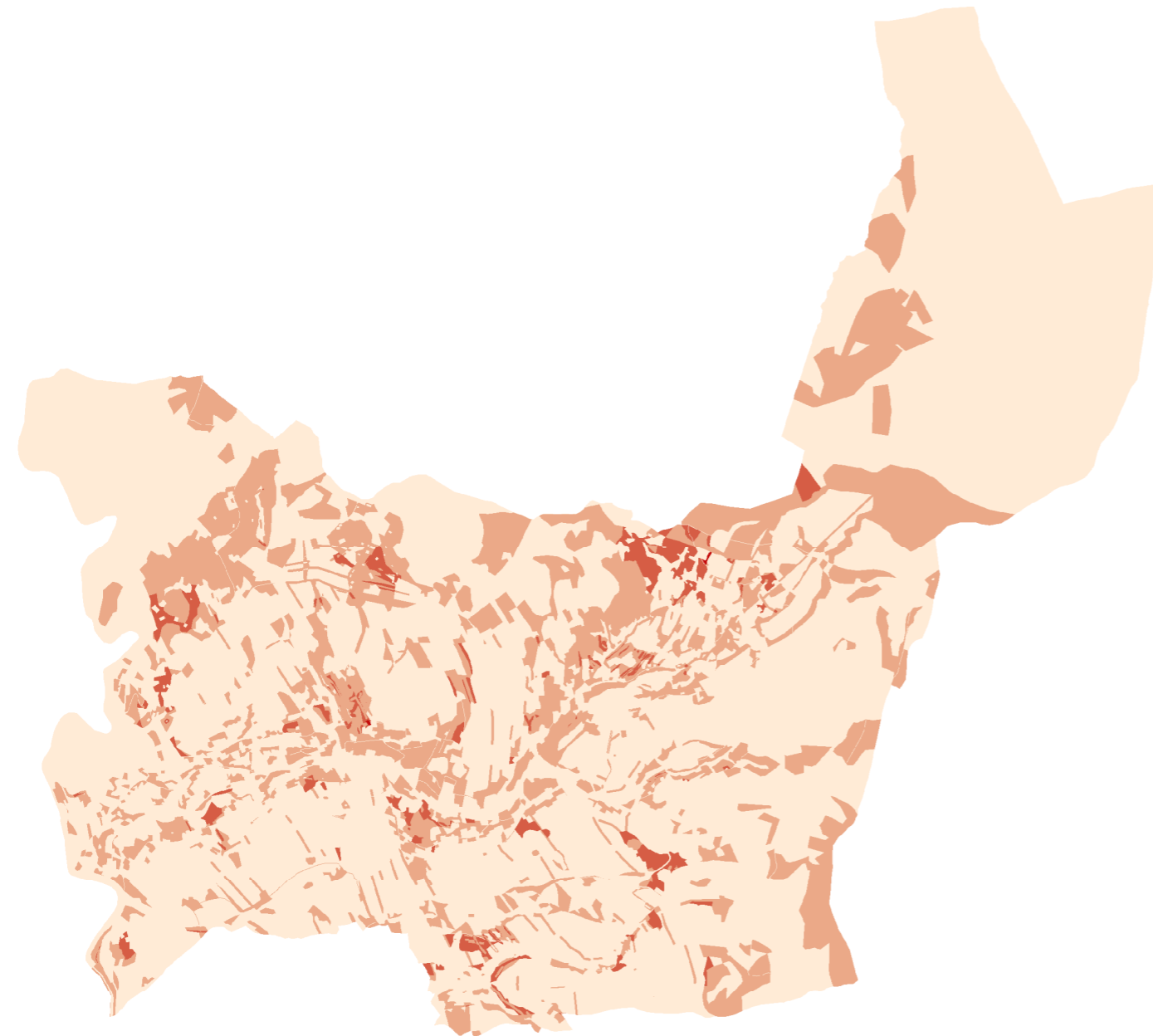
MALÁ ÚPA - LAND COVER 2016
AUTHOR: VÁCLAV TÁBORSKÝ
FORMAT: A3
PRAGUE, 2017

ROKYTNICE NAD JIZEROU - SPATIAL DYNAMICS OF LAND COVER CHANGE 1953 - 2016

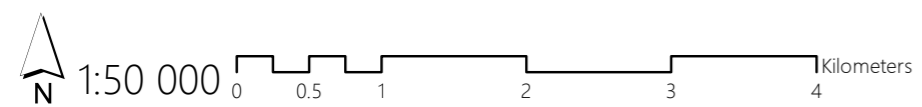
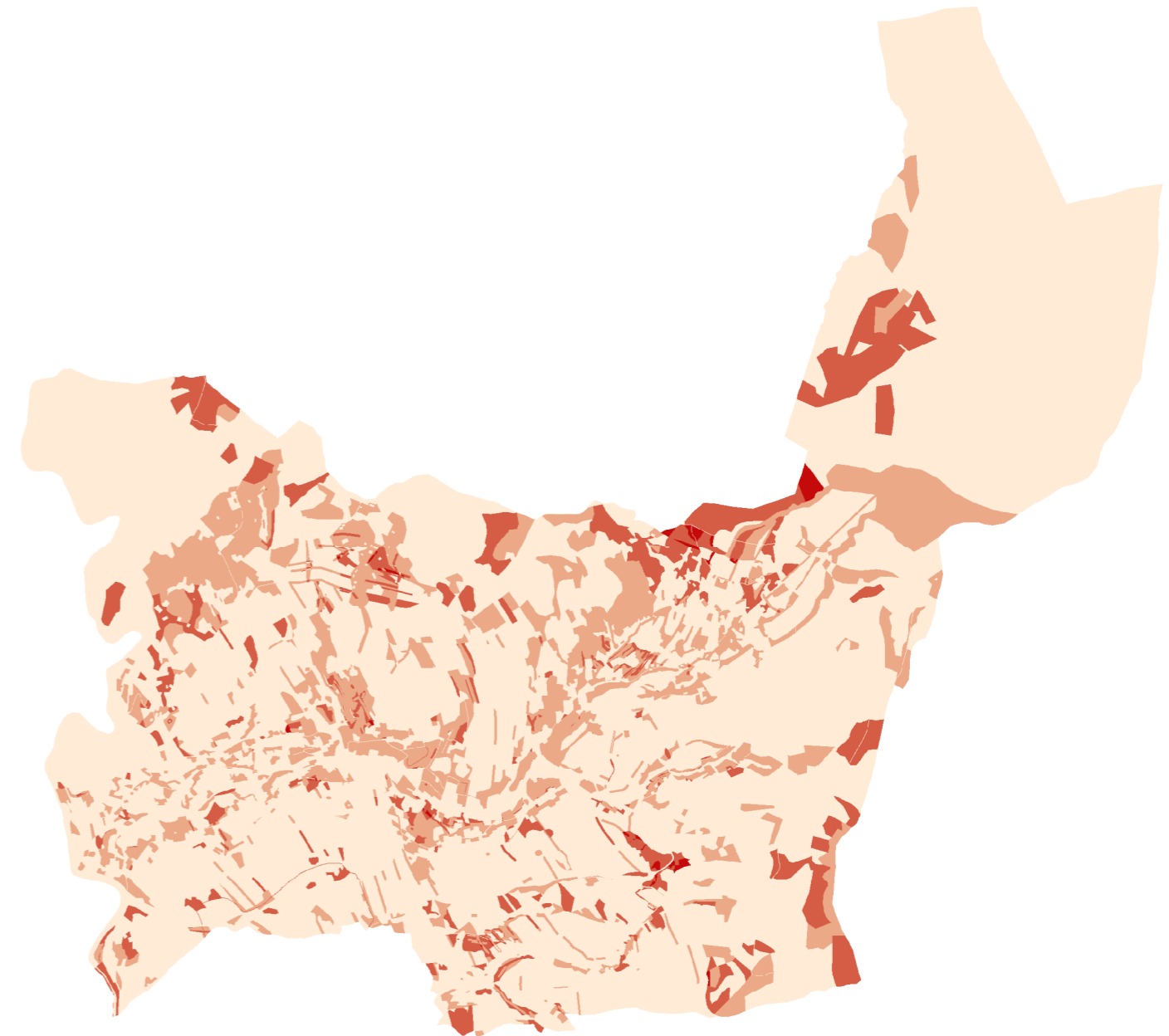
NUMBER OF CHANGES



FIRST METHOD



SECOND METHOD



CZECH UNIVERSITY OF LIFE SCIENCES
FACULTY OF ENVIRONMENTAL SCIENCES

ROKYTNICE NAD JIZEROU 1953-2016
NUMBER OF LAND COVER CHANGES
AUTHOR: VÁCLAV TÁBORSKÝ
FORMAT: A3
PRAGUE, 2017

BENECKO - SPATIAL DYNAMICS OF LAND COVER CHANGE 1953 - 2016

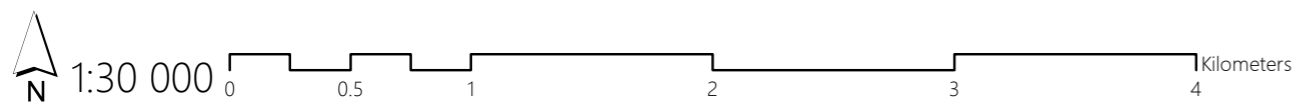
NUMBER OF CHANGES



FIRST METHOD



SECOND METHOD

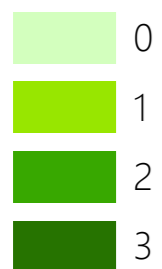


CZECH UNIVERSITY OF LIFE SCIENCES
FACULTY OF ENVIRONMENTAL SCIENCES

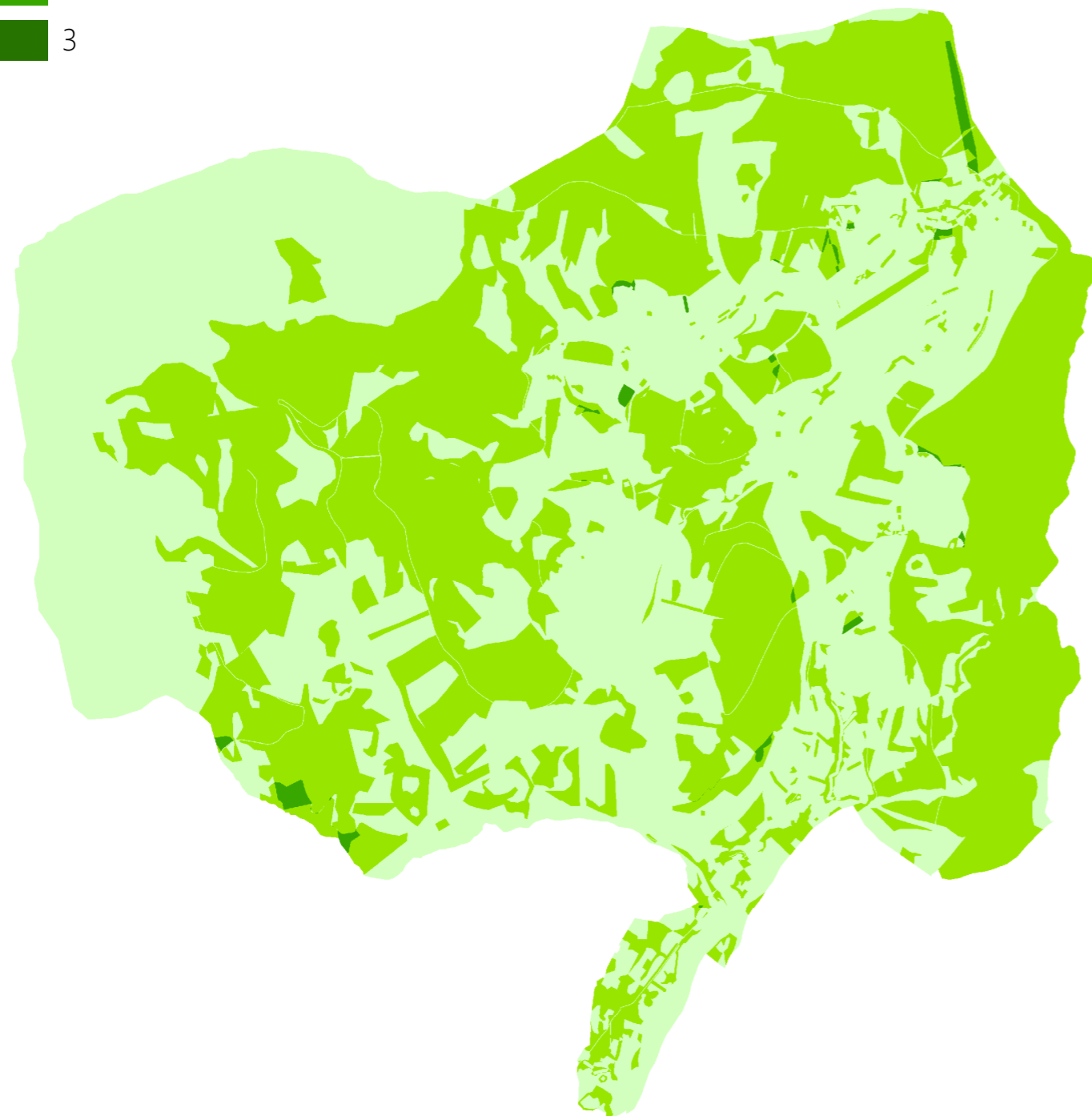
BENECKO 1953-2016
NUMBER OF LAND COVER CHANGES
AUTHOR: VÁCLAV TÁBORSKÝ
FORMAT: A3
PRAGUE, 2017

MALÁ ÚPA - SPATIAL DYNAMICS OF LAND COVER CHANGE 1953 - 2016

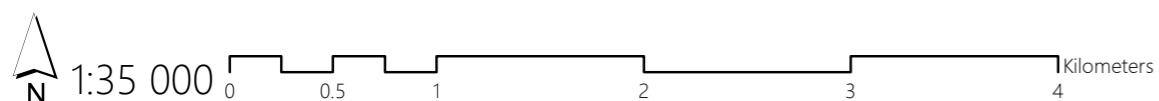
NUMBER OF CHANGES



FIRST METHOD



SECOND METHOD



CZECH UNIVERSITY OF LIFE SCIENCES
FACULTY OF ENVIRONMENTAL SCIENCES

MALÁ ÚPA 1953-2016
NUMBER OF LAND COVER CHANGES
AUTHOR: VÁCLAV TÁBORSKÝ
FORMAT: A3
PRAGUE, 2017