

## 9. APPENDICES

### Permaculture Flower

The permaculture journey begins with the Ethics and Design Principles and moves through the key domains required to create a sustainable culture. The spiral evolutionary path joins together these domains, initially at a personal and local level, and then proceeding to the collective and global level. Some of the specific fields, design systems and solutions that have been associated with the wider view of permaculture are listed below.

#### Land & Nature Stewardship

Bio-intensive gardening	Holistic Rangeland Management
Forest gardening	Natural Sequence Farming
Seed saving	Agroforestry
Organic agriculture	Nature-based Forestry
Biodynamics	Integrated aquaculture
Natural Farming	Wild harvesting & hunting
Keyline water harvesting	Gleaning

#### Building

Passive solar design	Earth sheltered construction
Natural construction materials	Natural disaster resistant construction
Water harvesting & Waste Reuse	Owner building
Biostucture	Pattern Language

#### Tools & Technology

Reuse & creative recycling	Bi-char from forest wastes
Hand Tools	Co-generation
Bicycles and electric bikes	Micro-hydro & small scale wind
Efficient & low pollution wood stoves	Grid-tied renewable power generation
Fuels from organic wastes	Energy storage
Wood Gasification	Transition engineering

#### Education & Culture

Home schooling	Social ecology
Waldorf education	Action Research
Participatory arts and music	Transition culture

#### Health & Spiritual Well-Being

Home birth & Breast feeding	Spirit of place, indigenous
Complementary & Wholistic Medicine	cultural revival
Yoga, Tai Chi & other	Dying with dignity
body/mind/spirit disciplines	

#### Finances & Economics

Local and regional currencies	WWOofing & similar networks
Carpooling, Ride sharing & Car share	Tradable Energy Quotas
Ethical Investment & Fair Trade	Life Cycle Analysis & Emergy
Farmers markets & Community Supported Agriculture (CSA)	Accounting

#### Land Tenure & Community Governance

Cooperatives & Body Corporates	Open Space Technology &
Cohousing & Ecovillages	Consensus Decision Making
Native Title and traditional use rights	



This work is licensed under the Creative Commons Attribution-NonCommercial-NoDerivatives 4.0 International License. To view a copy of this license, visit <http://creativecommons.org/licenses/by-nc-nd/4.0/> or send a letter to Creative Commons, 171 Second Street, Suite 300, San Francisco, California, 94105, USA. The Permaculture Flower has been adapted from David Holmgren's book Permaculture: Principles & Pathways Beyond Sustainability. Permaculture Flower Poster 1.0.

### Annex. 1 Permaculture flower (HOLMGREN, 2002)



### Annex. 2 3D model of Ridgedale farm, Sweden (PERKINS, 2014)



*Annex. 3 Ridgedale farm in Sweden (PERKINS, 2014)*



*Annex. 4 Ridgedale farm, Sweden (PERKINS, 2014)*



*Annex. 5 Historical orthophoto, 1953. The former structure of Czech landscape, southern Moravia (KONTAMINACE.CENIA.CZ, 2017)*



*Annex. 6 Šardice landscape. The example of historical pattern of landscape and the potential vision (photo author)*





*Annex. 7 Dammkultur at Bemagro farm (photo credit: Vojta Klusák)*

*Annex. 8 The graphics of furrow. The furrow width 45, 60 or 90 cm depends on chosen crop plant. (Dammkultur.info)*

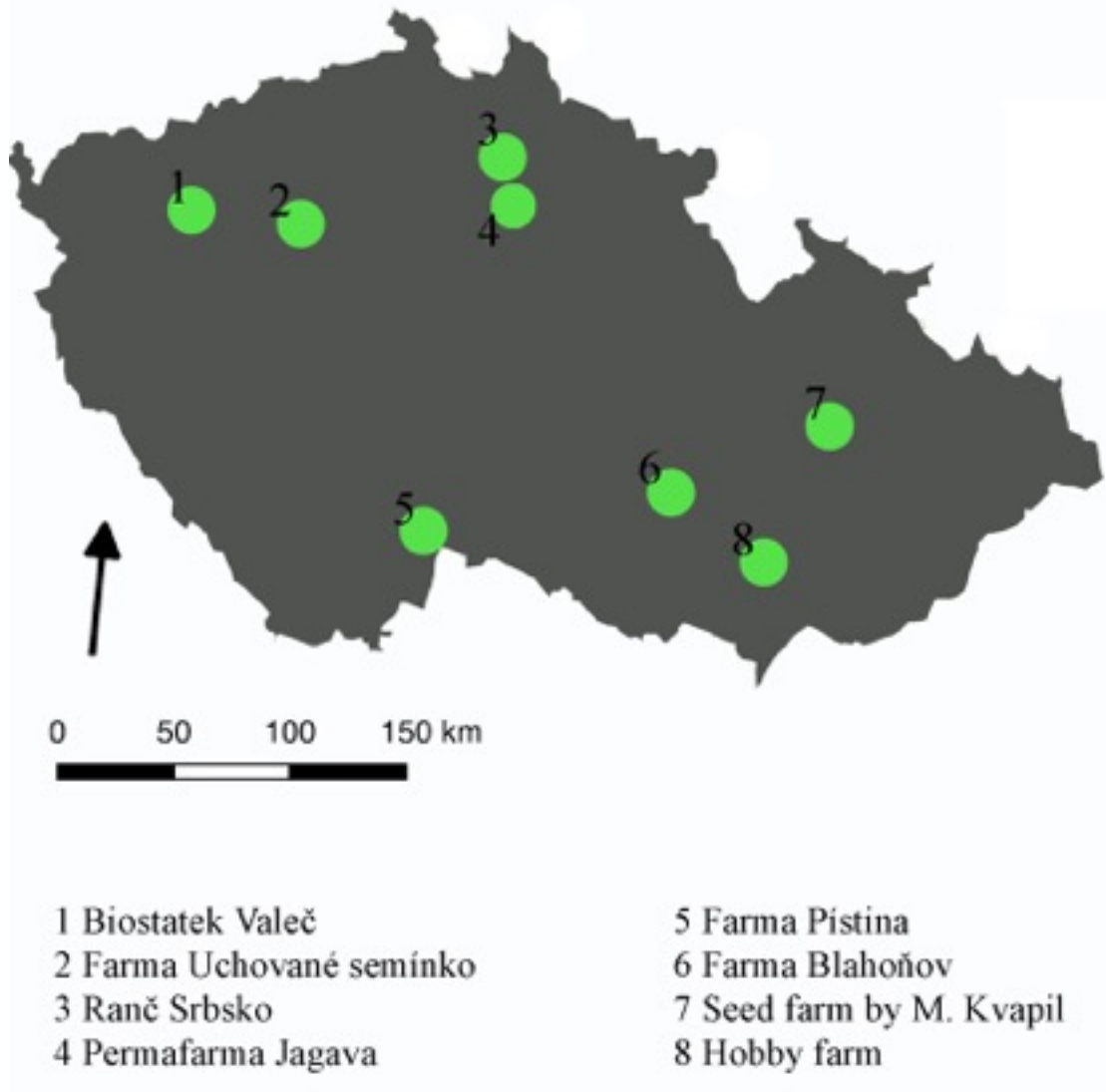


*Annex. 9 Backsbottom farm by Rod Everett, England. Forest garden (photo author)*



*Annex. 10 Backsbottom farm, England. Bank erosion occurring on the property, it is caused by floods after high amount of precipitation in a short period of time. The properties located upstream are not able to retain the excess water because of lack of natural vegetation (bogs), the water doesn't infiltrate on site and causes the erosion downstream. Outside bank of this stream meander is prone to erosion due to biggest concentration of energy on this spot. Rod Everett observed that and placed a couple of rows of large boulders that the water force is mitigated. This example shows that observe and interact with farm elements can solve some problems and also that a problem carries a solution within itself.*

Distribution of farms with permaculture aspects  
in the Czech Republic



*Annex. 11 Distribution of farms with permaculture aspects in the Czech Republic*

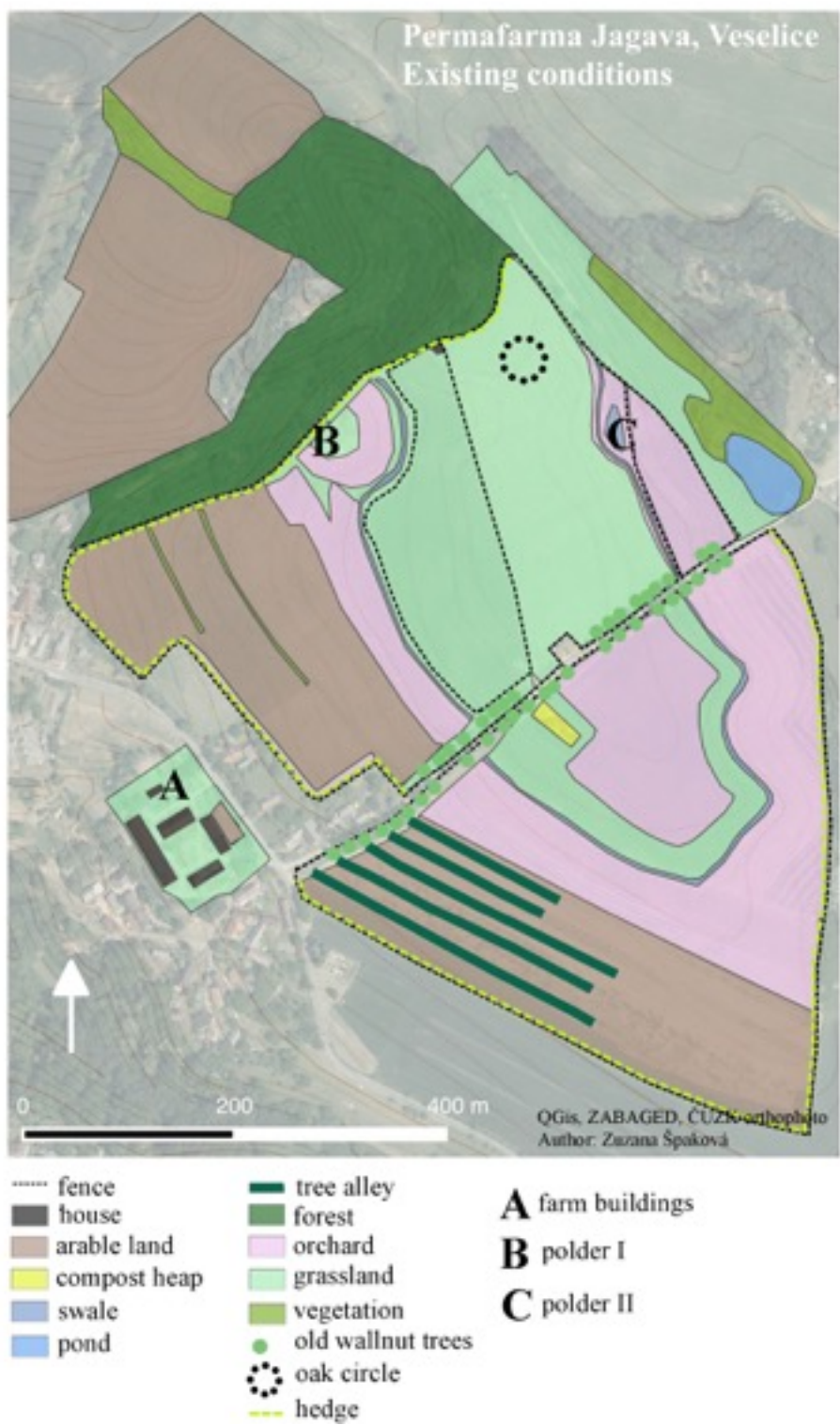




*Annex. 12 Farm Uchované semínko, edible forest (photo author)*

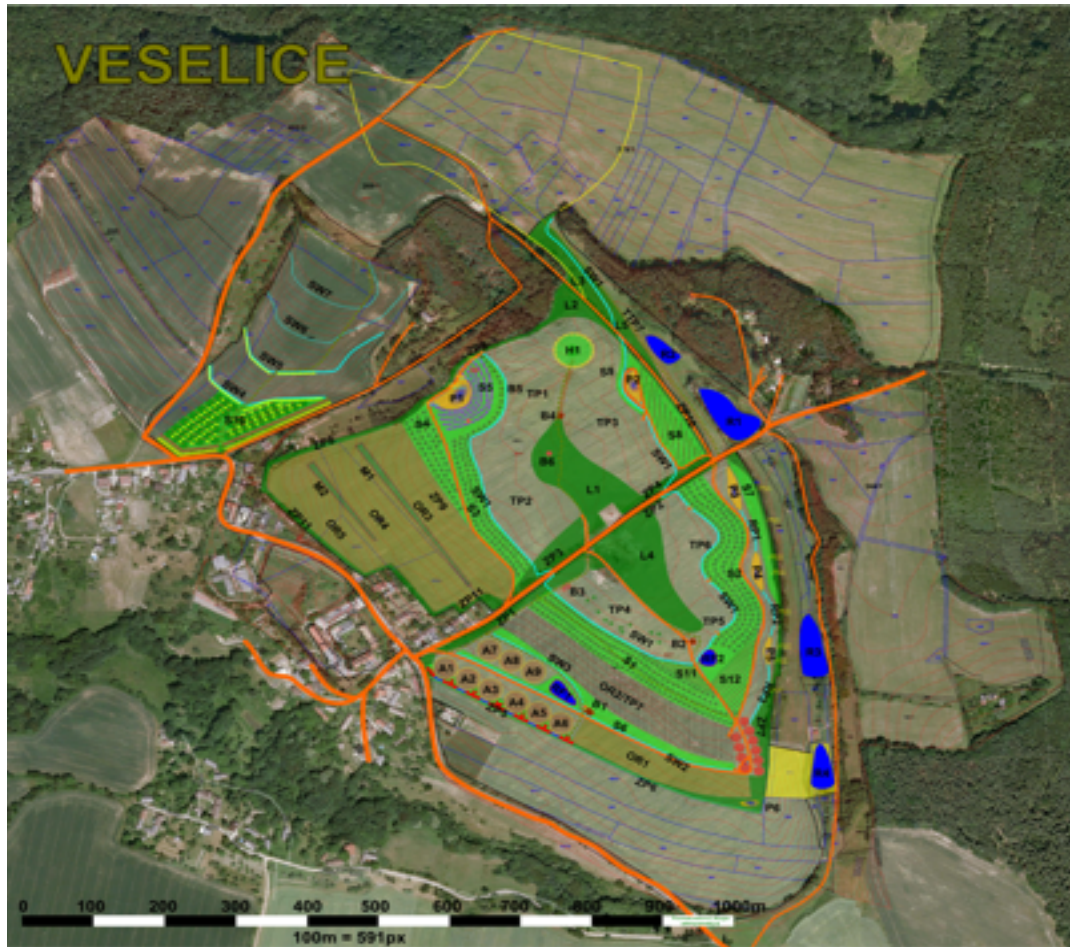


*Annex. 13 Silvipastoral system in Miskovice (photo author)*



*Annex. 14 Existing conditions of farm Jagava*





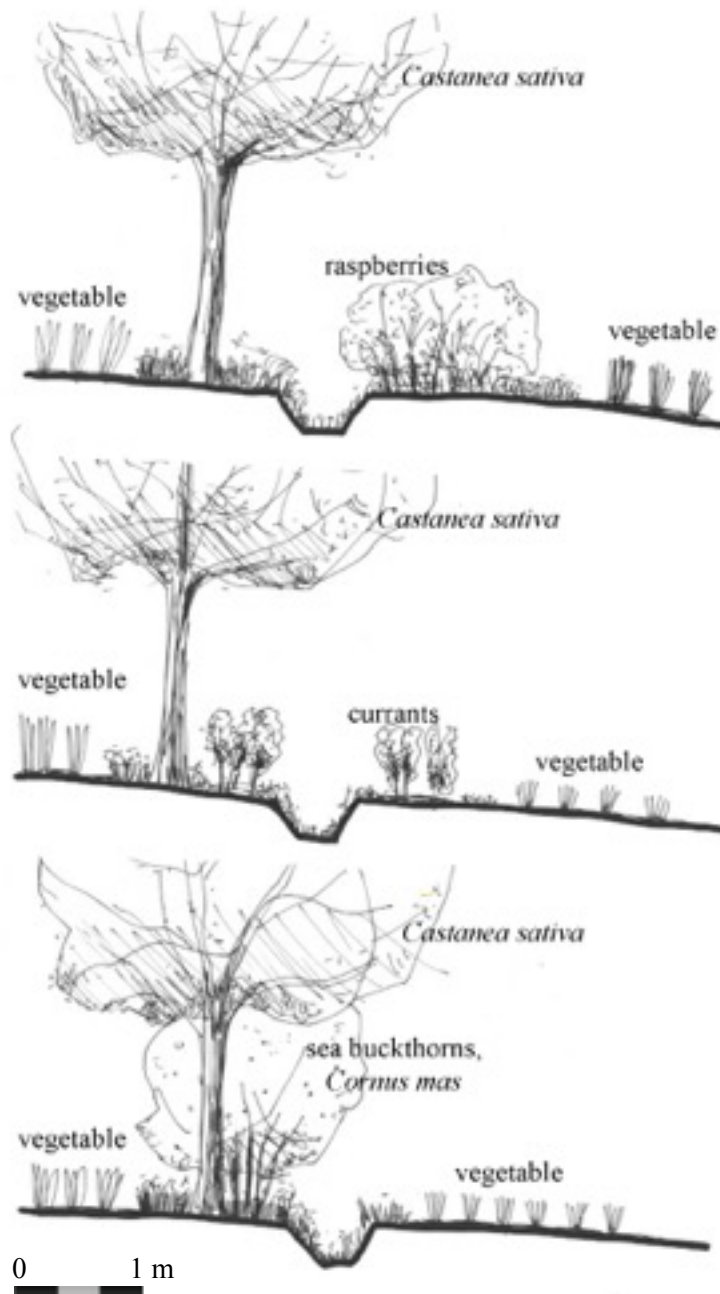
*Annex. 15 Original permaculture design by Zelenycarodej.cz (courtesy of Tomáš Franěk)*

Species for grasslands	Percentage
<i>Phleum pratense</i>	20%
<i>Trifolium repens</i>	3%
<i>Lolium perenne</i>	20%
<i>Lolium multiflorum</i>	10%
<i>Festuca rubra</i>	20%
<i>Festuca arundinacea</i>	20%
<i>Poa pratensis</i>	5%
<i>Agrostis gigantea</i>	2%

*Annex. 16 Sown mixture for grassland*

<b>Apple variety</b>	
<b>Heirloom varieties</b>	<b>Newer varieties</b>
Strýmka	Ametyst
Citrónové zimní	Julia
Gustavovo trvanlivé	Baya Marisa
Boskoopské	Vanda
Jadernička moravská	Nabella
Panenské české	Selena
Coxova reneta	Aneta
Krasokvět žlutý	Tábor
Smířické vzácné	Rosana
Parména zlatá	Rajka
Gascoygneho šarlatové	Orion
Vilémovo	Lipno
Landsberská reneta	Viktoria
Řehtáč soudkovitý	Rozela
Matčino (syn. Nonnetit)	Sirius
Gdánský hranáč (Všebořice)	Rubinola
Malinové holovouské	Heliodor
Albrechtovo	Luna
Croncelské	Topaz
Oranienské	Goldstar
	Angold

*Annex. 17 Example of apple varieties grown at the farm Jagava*



*Annex. 18 Farm Jagava in Veselice. Scheme of existing tree alleys*





*Annex. 19 Farm Jagava in Veselice. Vegetable field with tree alley I. (photo author)*



*Annex. 20 Farm Jagava in Veselice. Vegetable field with tree alley II. (photo courtesy of Tomáš Franěk)*



*Annex. 21 Farm Jagava in Veselice. Vegetable production (photo courtesy of Tomáš Franěk)*



*Annex. 22 Farm Jagava in Veselice. Orchard (photo author)*



*Annex. 23 Farm Jagava in Veselice. Retention polder (photo author)*





*Annex. 24 Farm Jagava in Veselice. Arable land with green manure (buckwheat) (photo author)*