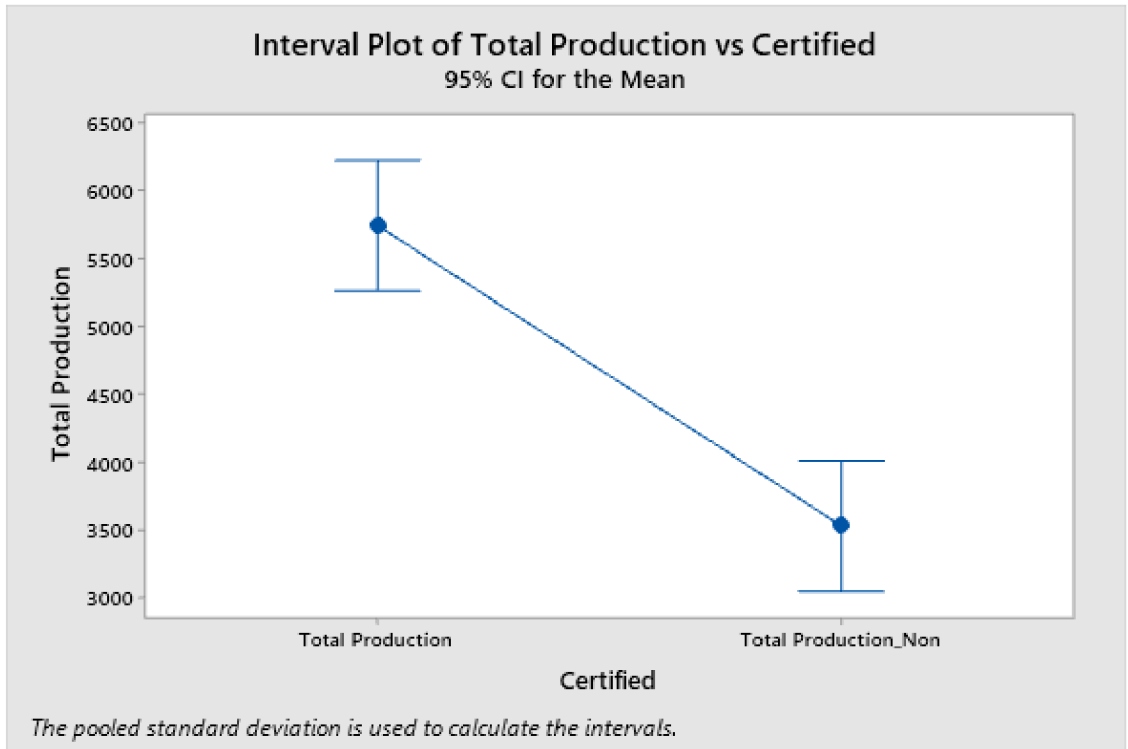
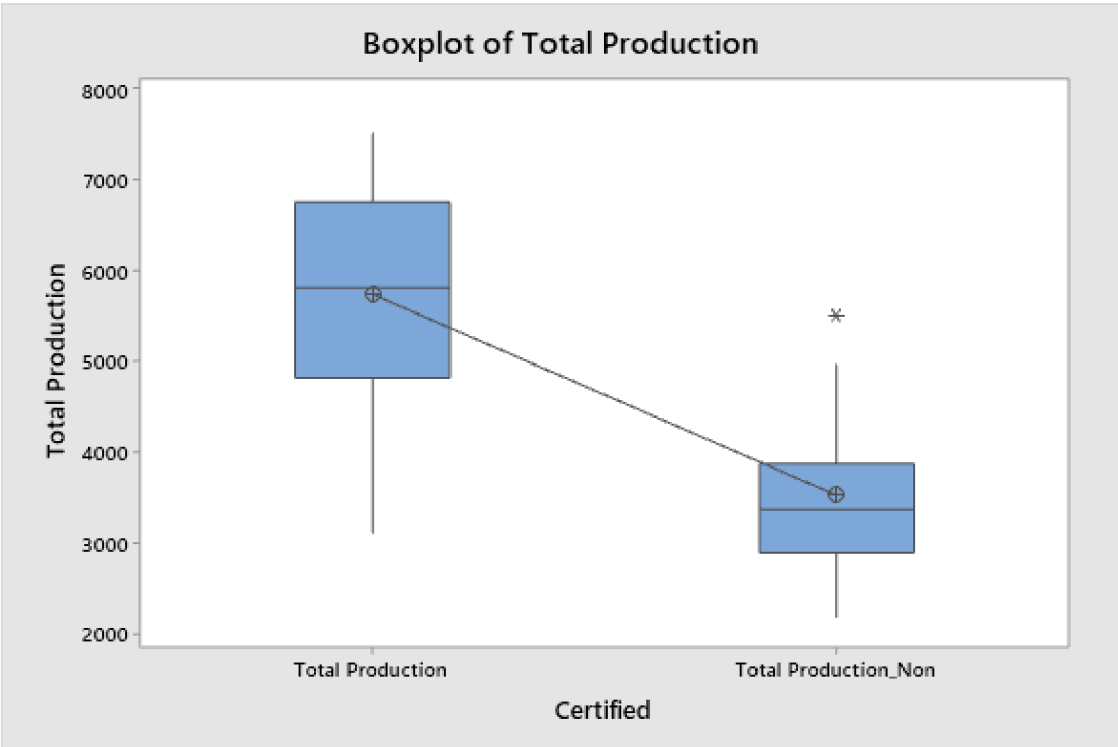
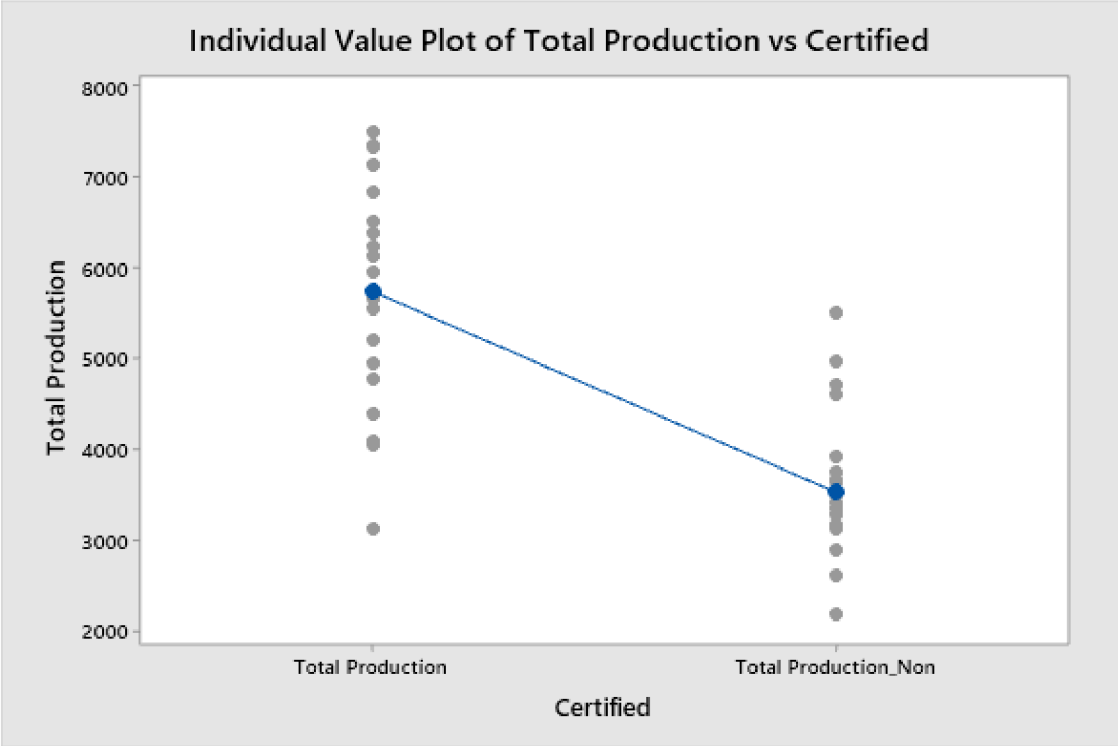
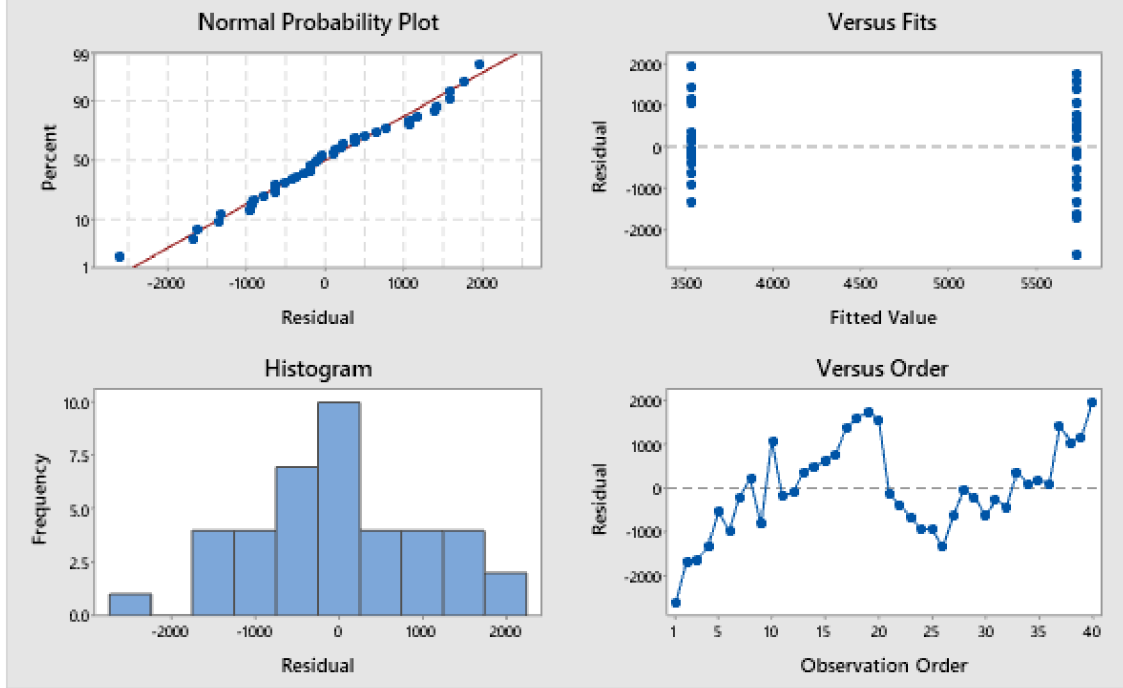


Year	Import_Non	Export_Non	Total Production_Non	Retail Prices_Non	Price paid to farmers_Non	Import	Export	Total Production	Retail Prices	Price paid to farmers
1990	1,344	3,075	3,401	61.09	19.92	1,257	1,418	3,115	61.09	22.92
2001	1,432	3,153	3,158	43.78	10.57	1,432	1,939	4,044	43.78	15.32
2002	1,463	2,610	2,990	26.69	12.76	1,447	2,277	4,094	26.69	16.27
2003	1,436	2,523	2,999	34.57	20.81	1,336	2,374	4,394	34.57	22.77
2004	1,495	2,489	2,613	46.65	26.26	1,539	2,620	5,213	46.65	21.91
2005	1,693	2,002	2,175	64.23	40.92	1,577	2,702	4,779	64.23	27.92
2006	1,600	2,704	2,994	58.32	47.02	1,601	2,770	5,551	58.32	44.72
2007	1,770	3,210	3,490	69.63	55.90	1,968	2,806	5,967	69.63	56.72
2008	1,804	3,054	3,335	71.71	71.09	1,901	1,868	4,949	71.71	76.94
2009	1,689	2,689	2,884	77.06	49.03	1,309	2,904	6,830	77.06	44.71
2010	1,727	3,150	3,267	86.46	65.61	1,369	3,022	5,560	86.46	42.36
2011	1,647	2,727	3,115	145.48	73.54	1,452	2,832	5,650	145.48	74.14
2012	1,680	3,583	3,914	102.79	71.80	1,559	3,166	6,132	102.79	68.50
2013	1,709	3,500	3,633	73.30	67.71	1,555	3,044	6,242	73.30	66.56
2014	2,198	3,455	3,744	83.24	70.18	1,525	2,672	6,383	83.24	59.58
2015	2121	3,316	3,850	76.03	60.22	1513	3,092	6,515	76.03	59.55
2016	2350	4,606	4,962	67.31	59.41	1495	3,497	7,143	67.31	65.73
2017	2306	4,359	4,597	81.51	63.95	1460	3,654	7,347	81.51	66.73
2018	2262	4,454	4,704	70.69	67.23	1429	3,691	7,511	70.69	70.93
2019	2340	5,355	5,509	69.31	64.61	1449	3,612	7,343	69.31	70.50





Residual Plots for Total Production

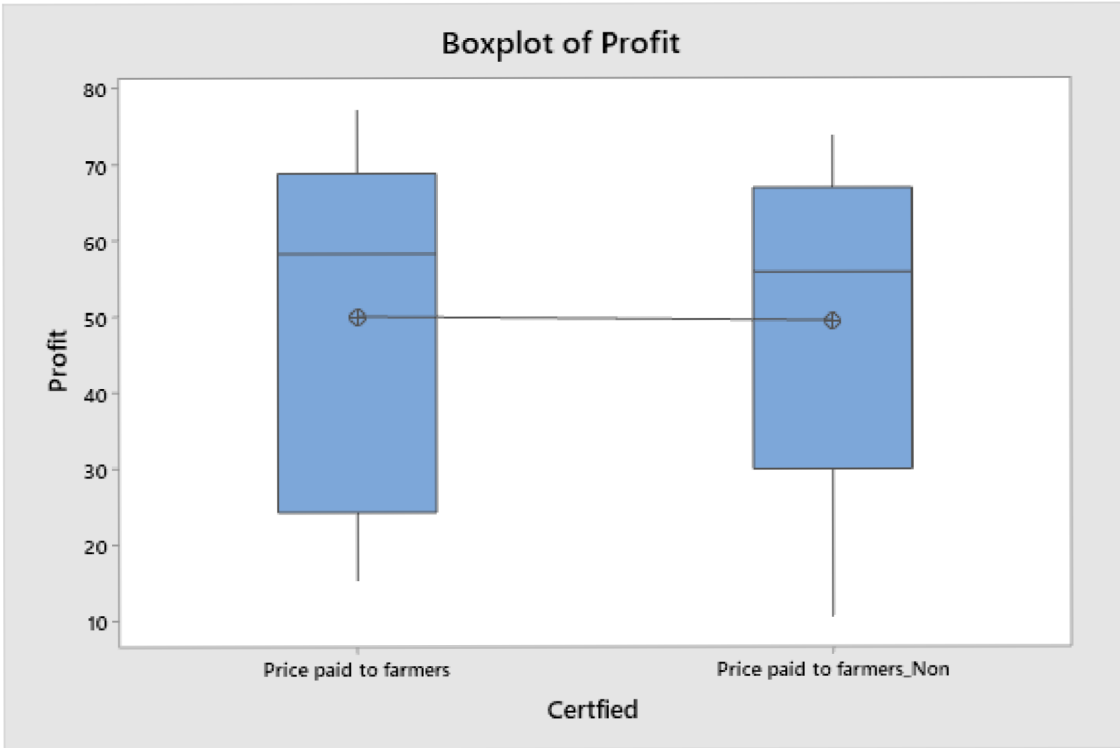
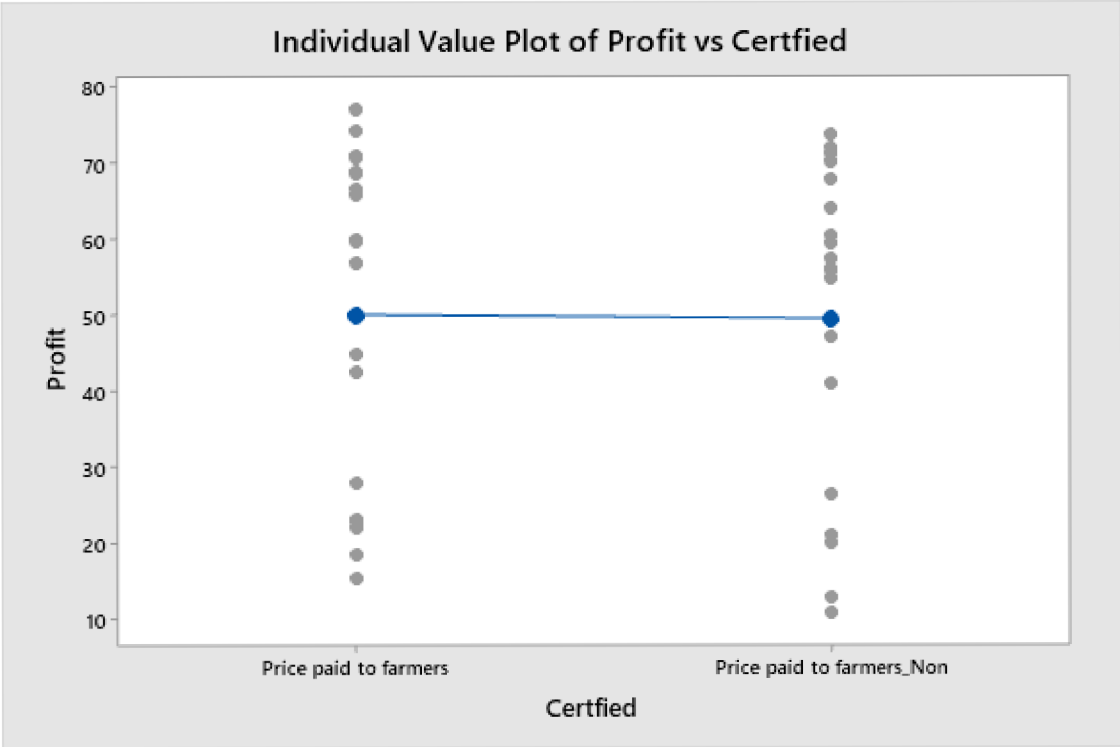


Interval Plot of Profit vs Certified

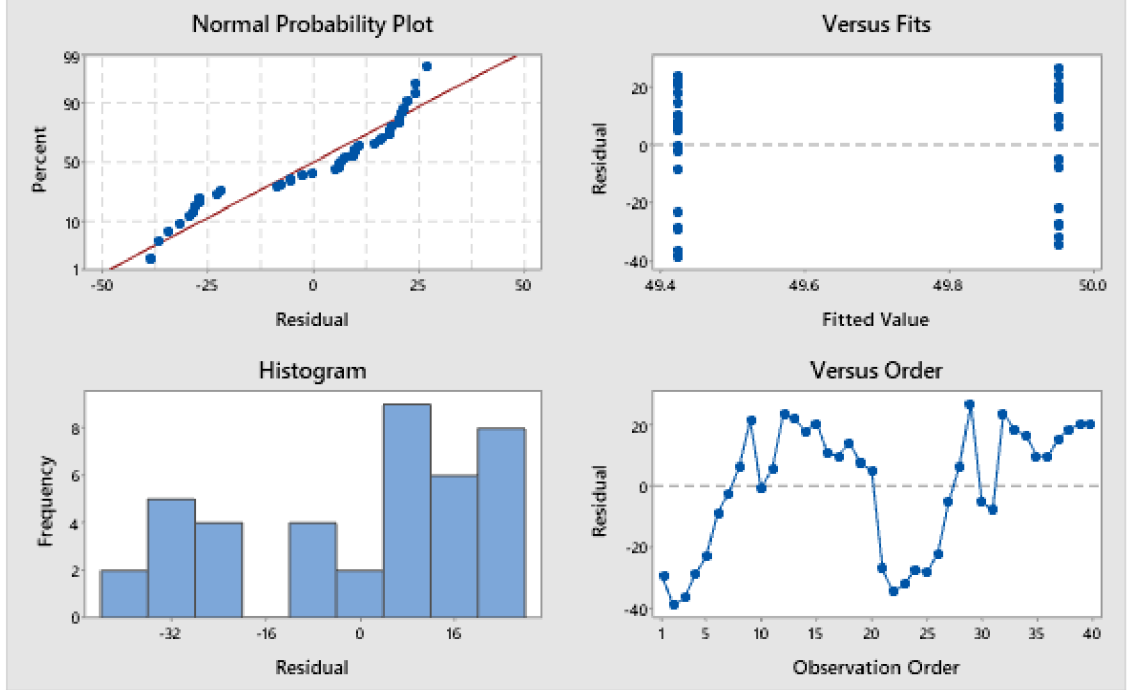
95% CI for the Mean



The pooled standard deviation is used to calculate the intervals.



Residual Plots for Profit



SUMMARY DASHBOARD OF COFFEE PRODUCTION AND SALES

Certified No. of Exports

56K

Certified No. of Imports

30K

UnCertified No. of Exports

66K

UnCertified No. of Imports

36K

Certified Profits

\$999.0572

UnCertified Profits

\$988.4496

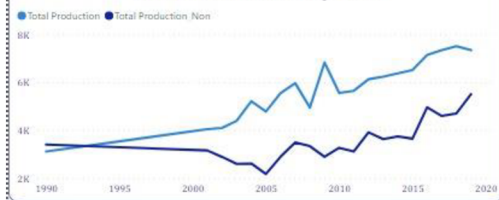
Certified Total Production

114.76K

UnCertified Total Production

70.54K

Total Production by Year



Total Production by Year

