

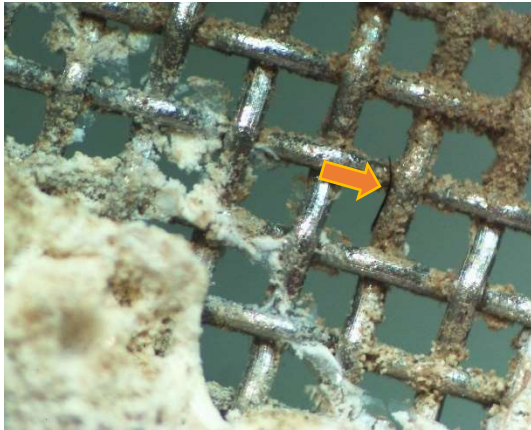
OBRAZOVÉ PŘÍLOHY

Během kvantitativní analýzy bylo provedeno 2310 fotografií díky binokulárnímu mikroskopu s videookulárem. Další 189 fotografií vybraných částic bylo vytvořeno Mgr. Martinem Lexou, Ph.D. během kvalitativní analýzy s identifikací díky Ramanově spektroskopii. Vzhledem k množství pořízených fotografií byly vybrány pouze reprezentativní kusy z každé řeky a uvedeny v příloze v pořadí:

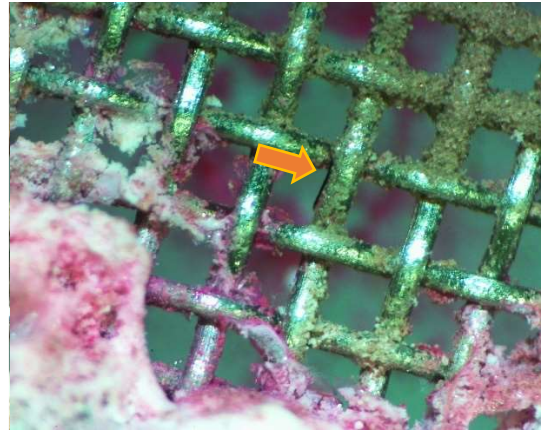
- vybrané dvojice fotografií pořízené binokulárním mikroskopem před a po obarvení,
- mikroplasty potvrzené Ramanovou spektroskopií.

Každá fotografie má své označení vzorkování, při kterém byl daný mikroplast získán: K (pasivní metodou, košík) či S (pasivní metodou, svorka), A (aktivní metodou), označení filtru 50 μm či 500 μm , zvětšení, pozice na mřížce, barvení bengálskou červení (BR) a roční období. Fotografie získané pomocí Ramanovy spektroskopie jsou buď charakterizovány přímo typem mikroplastu či jsou identifikovány jako „Potvrzený mikroplast“ – částice, která má mikroplastový charakter, ale kvůli změně povrchu jí nebylo možné jednoznačně identifikovat.

MORAVA



Léto K 500 3LSZ(20x)



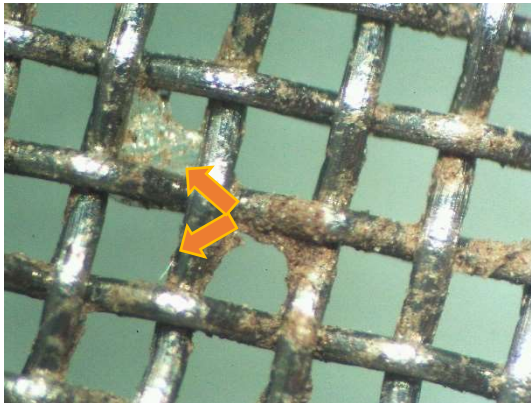
Léto K 500 3LSZ(20x) BR



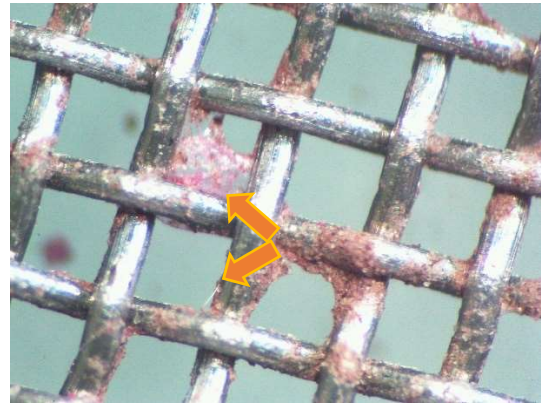
Léto_K_500_1PSS(20x)



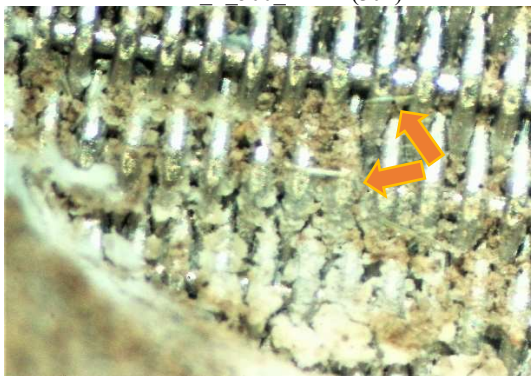
Léto_K_500_1PSS(20x)_BR



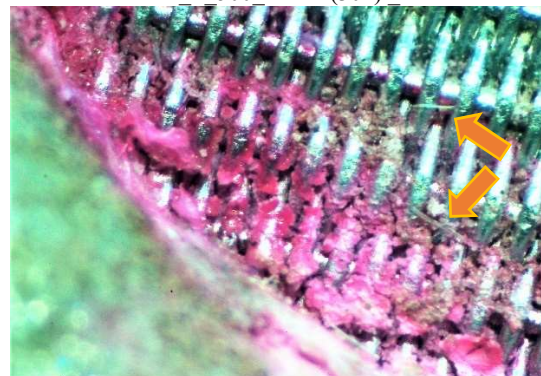
Podzim S 500 2PSSS(30x)



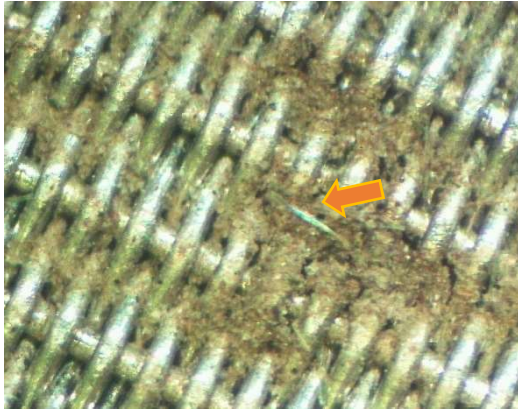
Podzim S 500 2PSSS(30x) BR



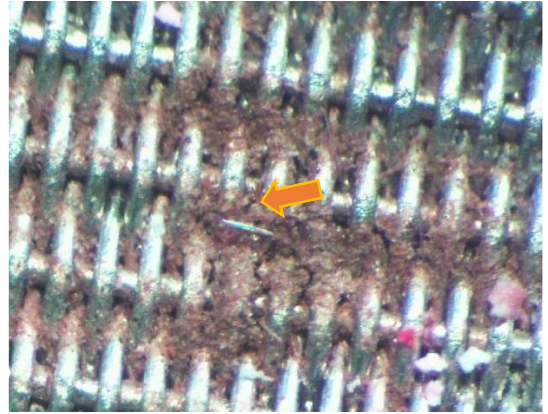
Podzim_S_50_2LSDO(30x)



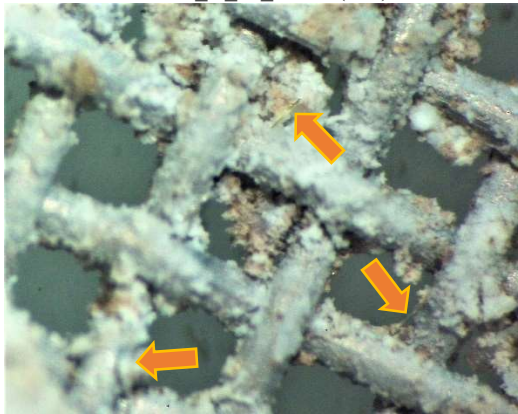
Podzim_S_50_2LSDO(30x)_BR



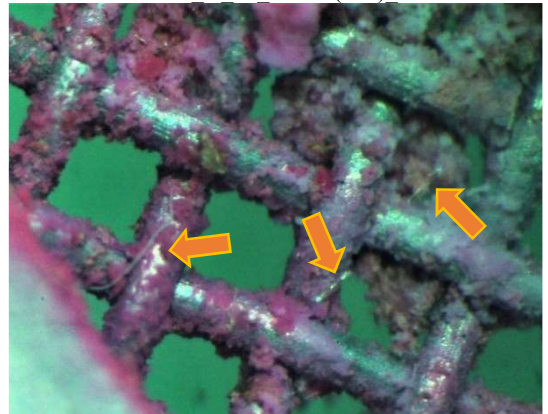
Podzim_K_50_3PSnS(30x)



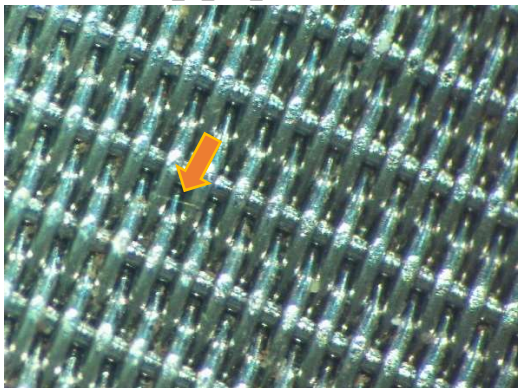
Podzim_K_50_3PSnS(30x)_BR



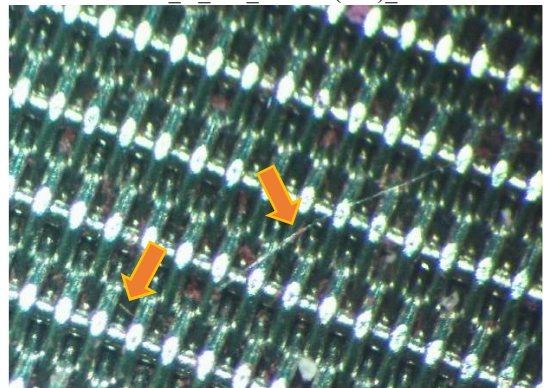
Zima_K_500_2LSDO(30x)



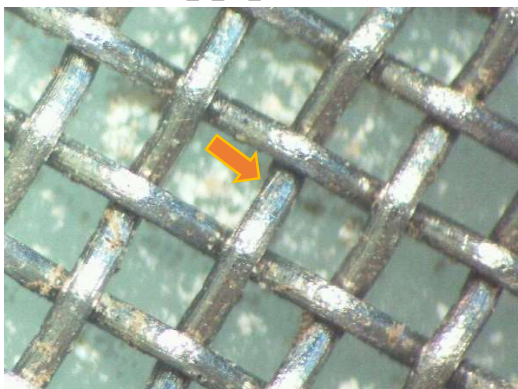
Zima_K_500_2LSDO(30x)_BR



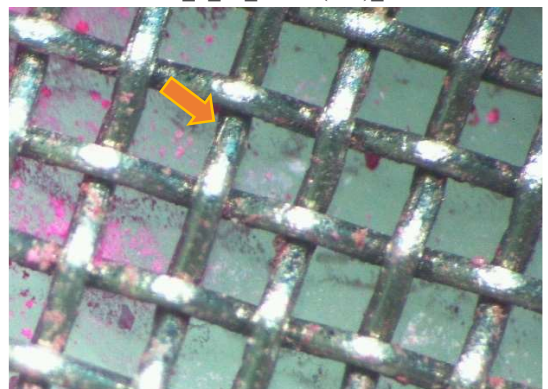
Zima_S_50_3LS2z(30x)



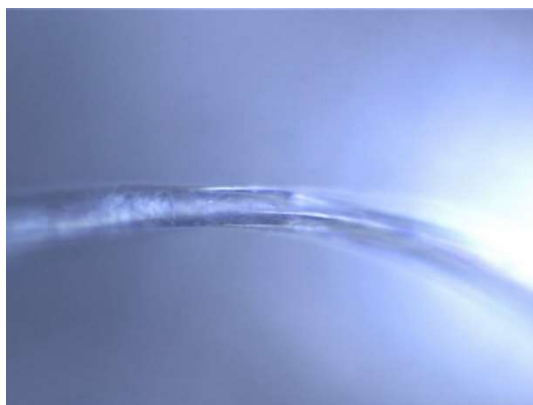
Zima_S_50_3LS2z(30x)_BR



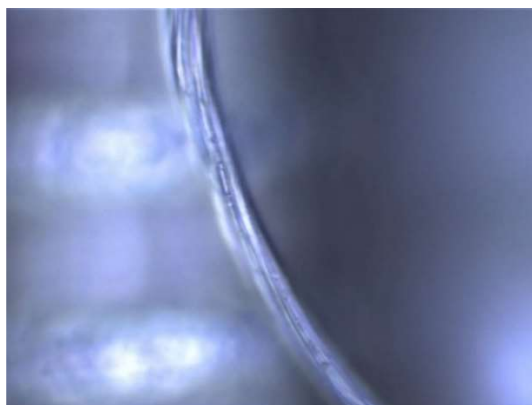
Zima_S_500_3PS2z(30x)



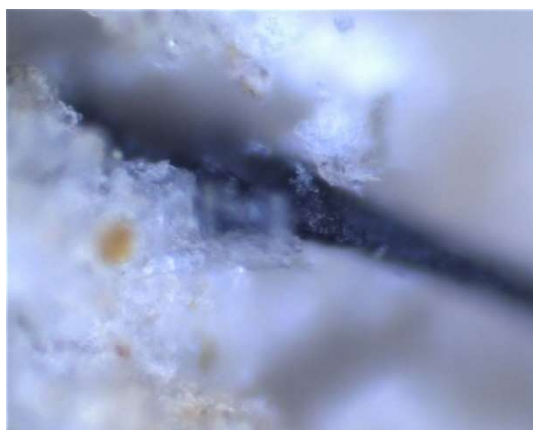
Zima_S_500_3PS2z(30x)_BR



Identifikace MP – **PET** (S_50_zima)



Potvrzený mikroplast (S_25_zima)



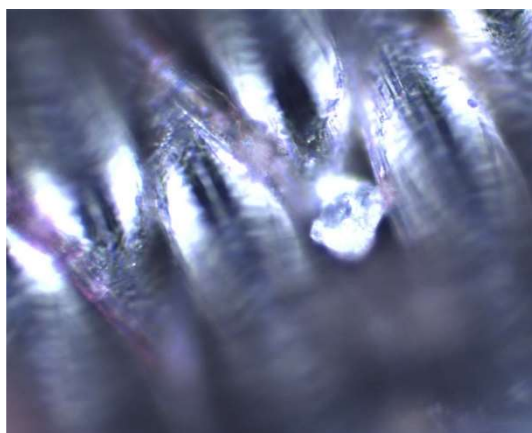
Potvrzený mikroplast (K_25_léto)



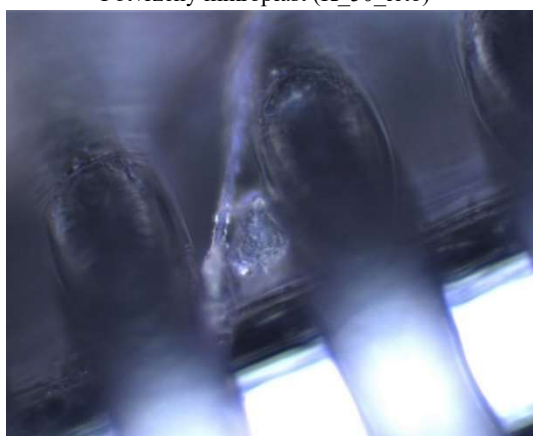
Potvrzený mikroplast (K_50_léto)



Potvrzený mikroplast (K_50_léto)



Potvrzený mikroplast (A_50_jaro)

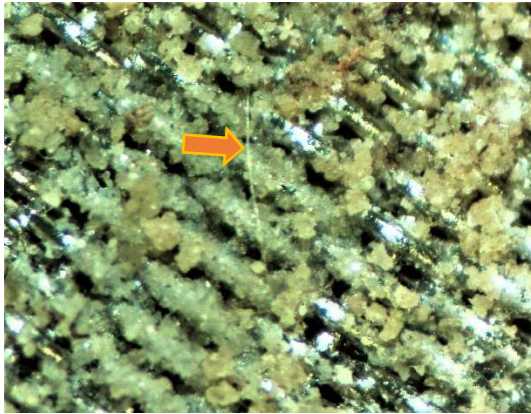


Potvrzený mikroplast (A_50_jaro)

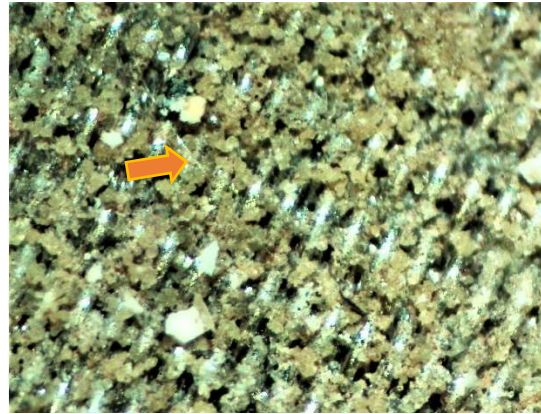


Potvrzený mikroplast (A_50_jaro)

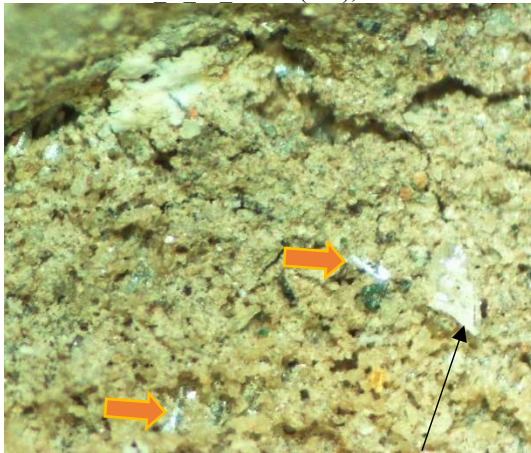
BEČVA



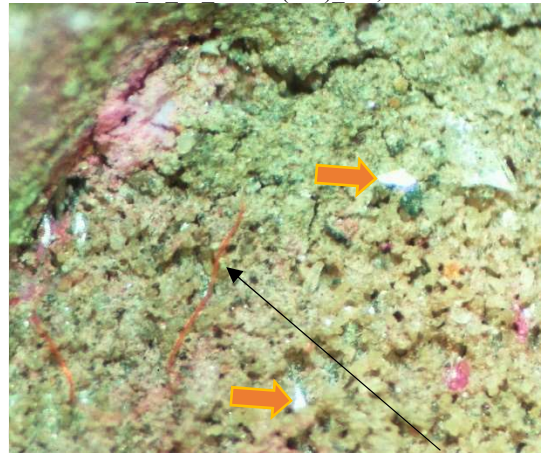
Léto K 50 3LS2Z(30x), nános



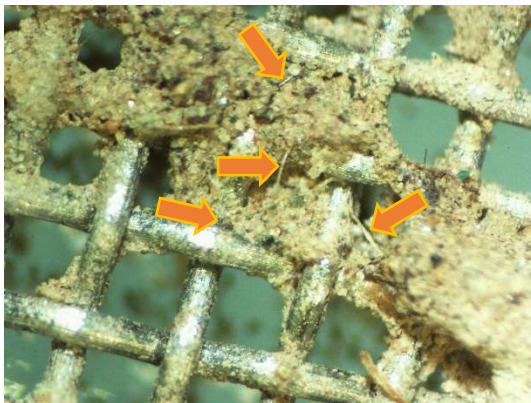
Léto K 50 3LS2Z(30x) BR, nános



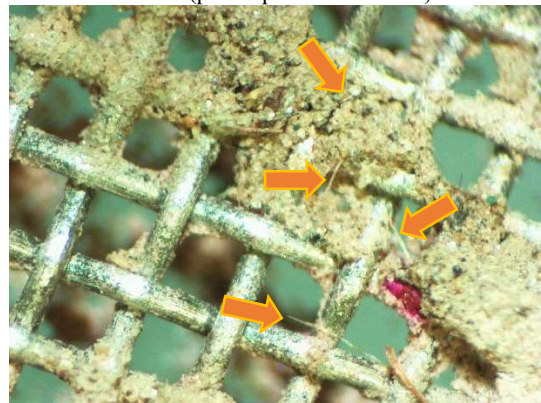
Léto S 50 2LS1Z(30x), nános; úlomek Al filtru



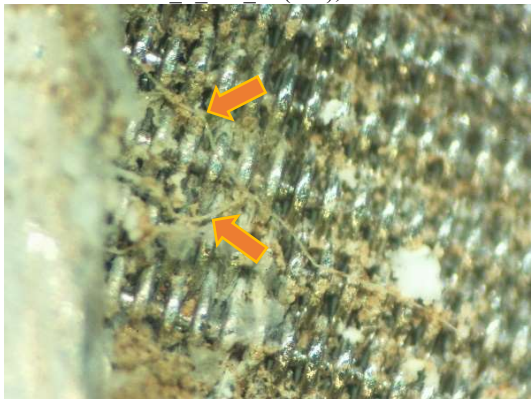
Léto S 50 2LS1Z(30x) BR, nános; organický materiál (pravděpodobně kořínků)



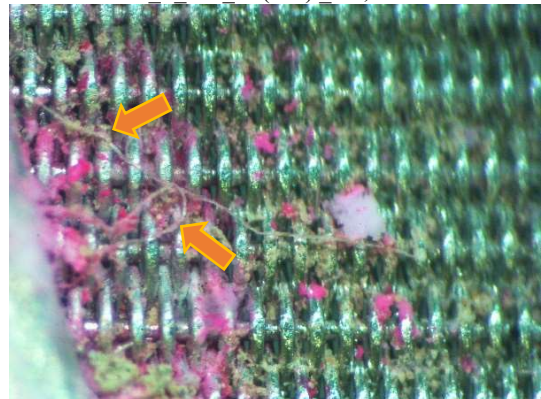
Léto S 500 SS(30x), nános



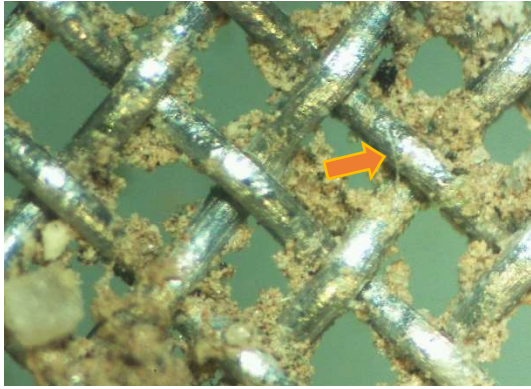
Léto S 500 SS(30x) BR, nános



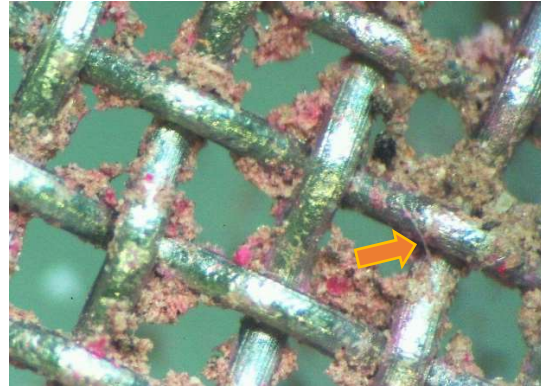
Podzim K 50 1LS2Z(30x)



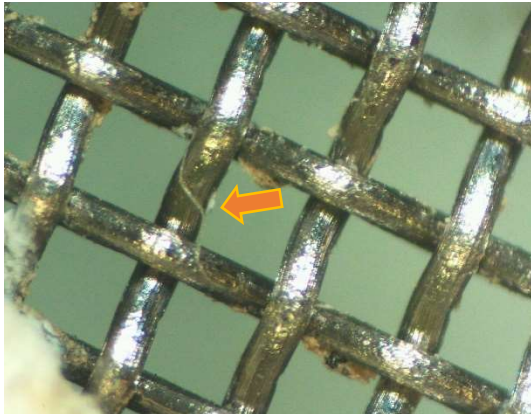
Podzim K 50 1LS2Z(30x)_BR



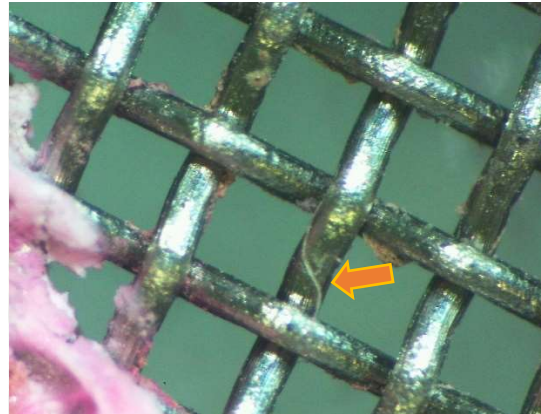
Podzim_K_500_2PS2Z(30x)



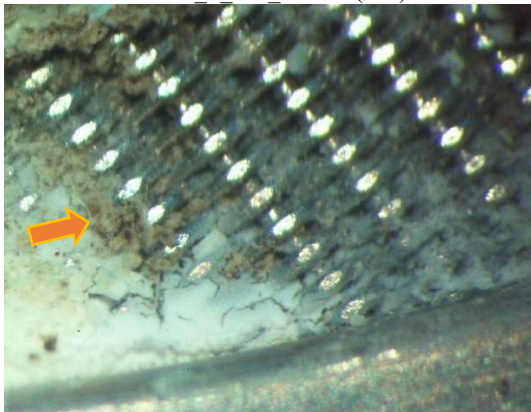
Podzim_K_500_2PS2Z(30x)_BR



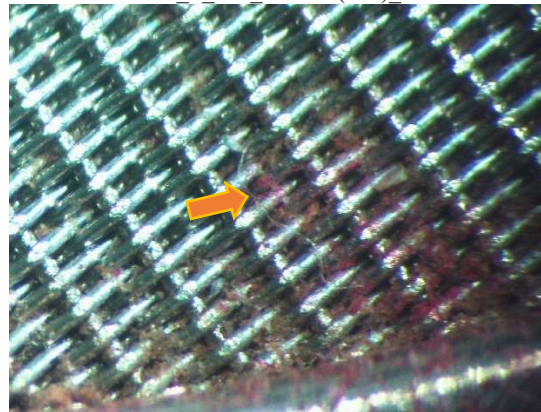
Podzim_S_500_3LSDO(30x)



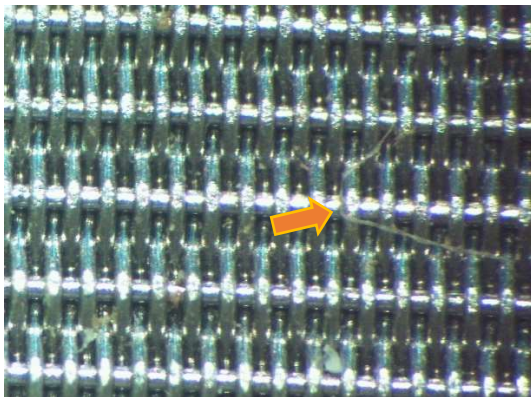
Podzim_S_500_3LSDO(30x)_BR



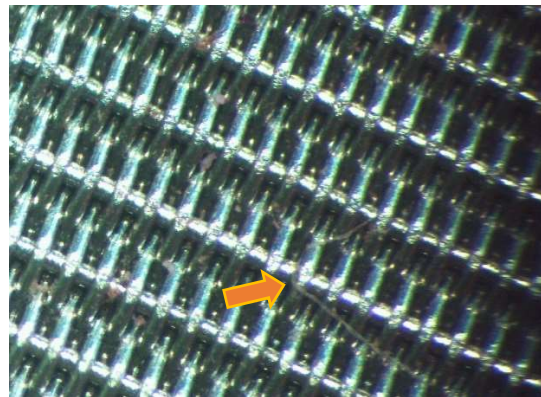
Zima_K_50_1PSDO(30x)



Zima_K_50_1PSDO(30x)_BR



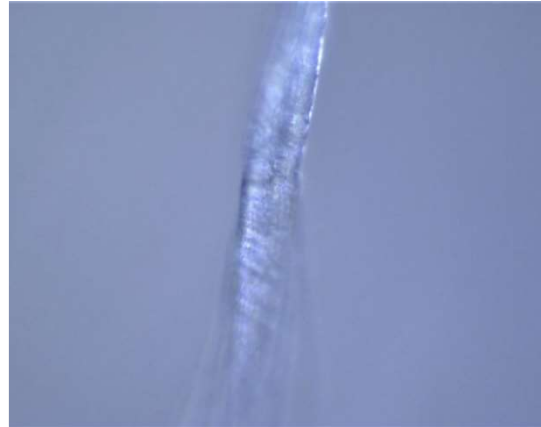
Zima_S_50_2PSS(30x)



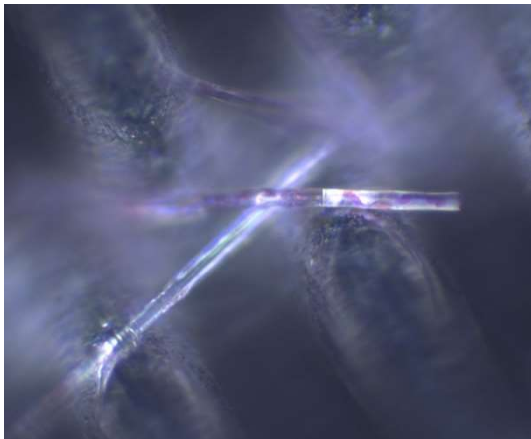
Zima_S_50_2PSS(30x)



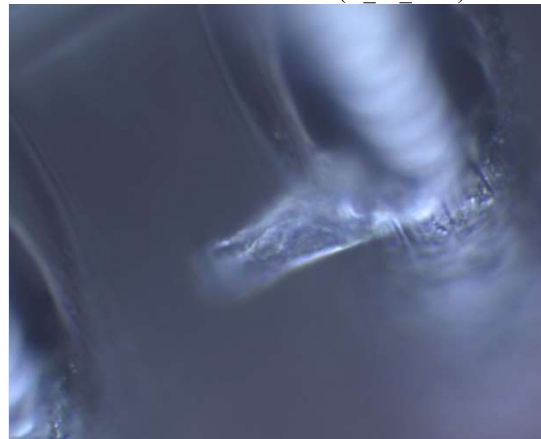
Identifikace MP – **PET** (K_25_zima)



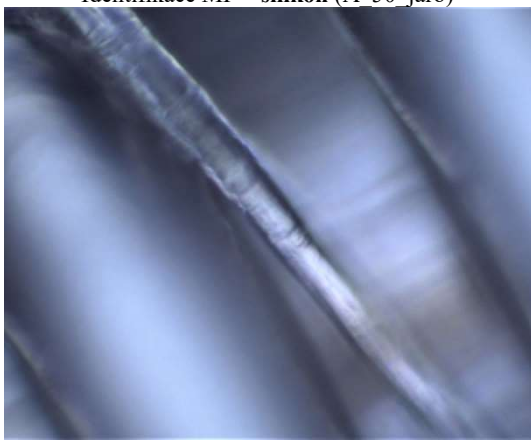
Identifikace MP – **celulóza** (K_25_zima)



Identifikace MP – **silikon** (A_50_jaro)



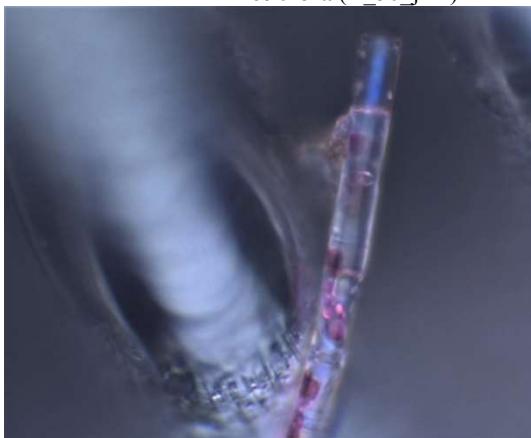
Identifikace MP – **nylon** (A_50_jaro)



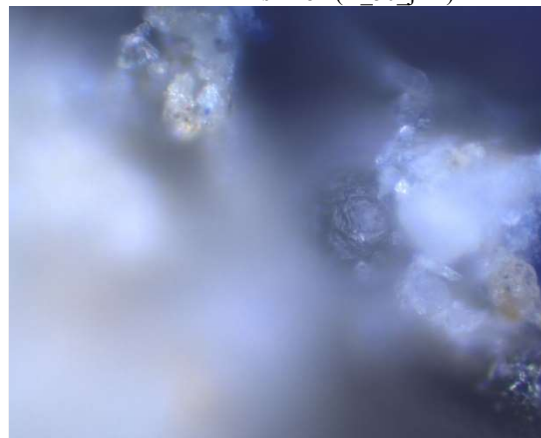
Identifikace MP – **celulóza** (A_50_jaro)



Identifikace MP – **silikon** (A_50_jaro)



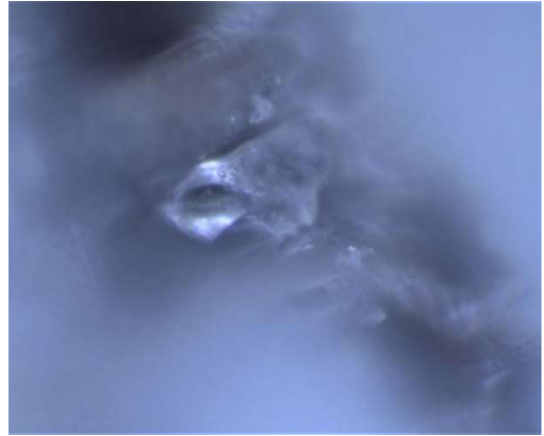
Identifikace MP – **silikon** (A_50_jaro)



Identifikace MP - **PE** (S_25_léto)



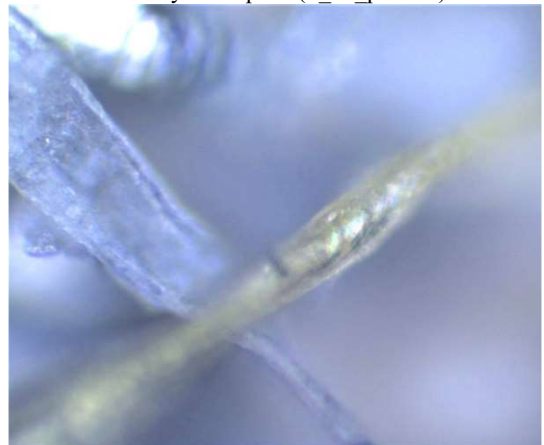
Potvrzený mikroplast (S_50_zima)



Potvrzený mikroplast (S_25_podzim)

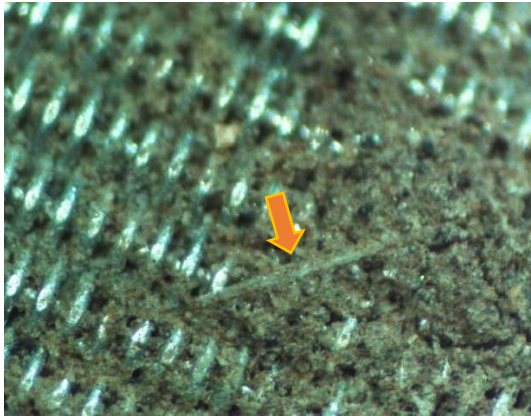


Potvrzený mikroplast (K_25_léto)

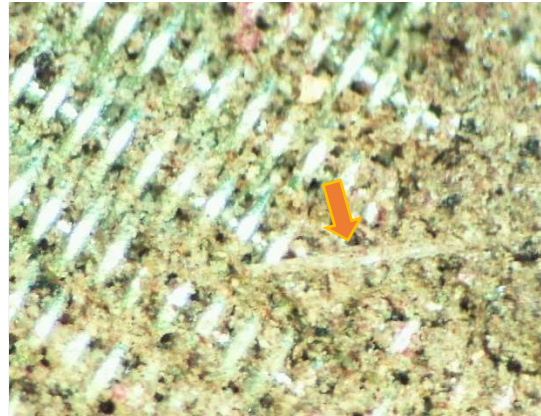


Potvrzený mikroplast (S_25_léto)

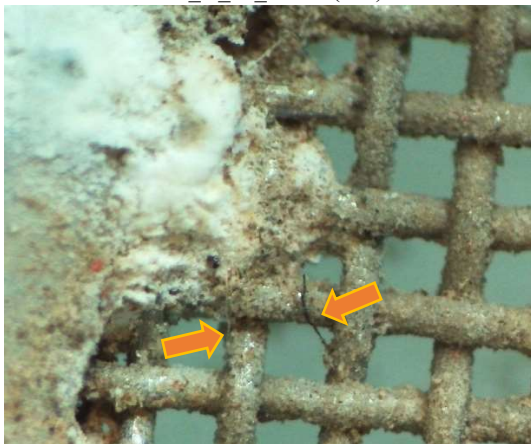
HANÁ



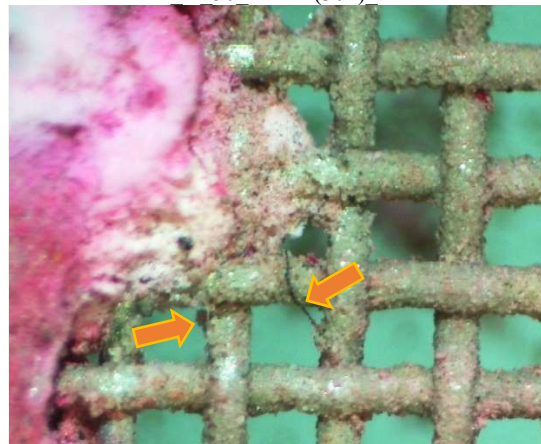
Léto_K_50_2PS2Z(30x)



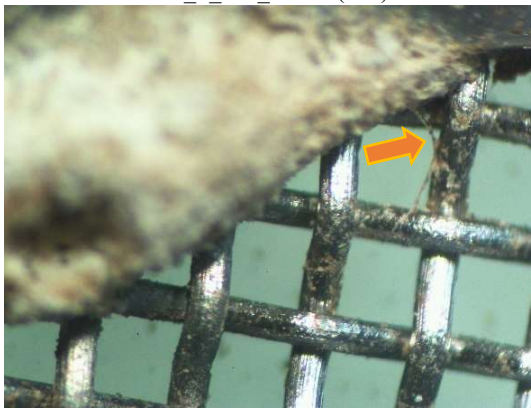
Léto K 50 2PS2Z(30x) BR



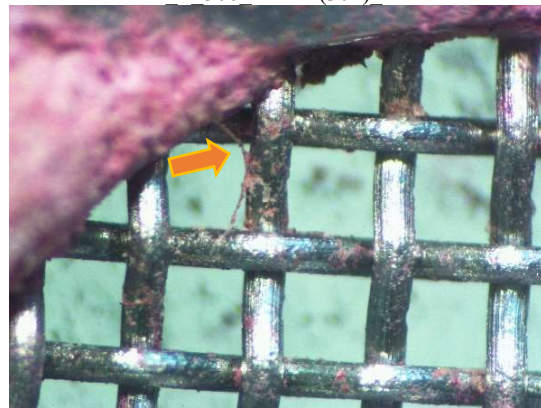
Léto_S_500_1LS1Z(30x)



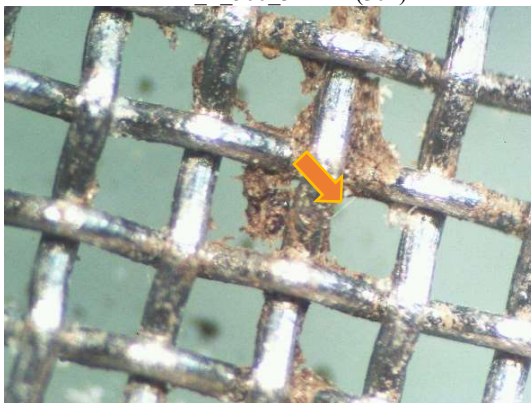
Léto S 500 1LS1Z(30x) BR



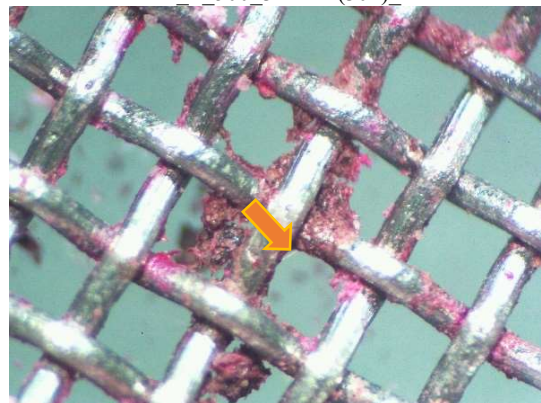
Podzim_S_500_3LSVO(30x)



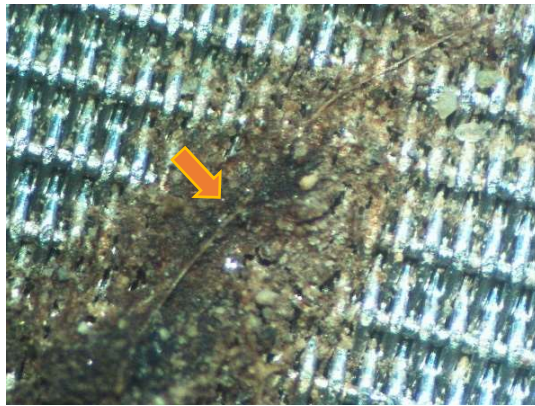
Podzim S 500 3LSVO(30x) BR



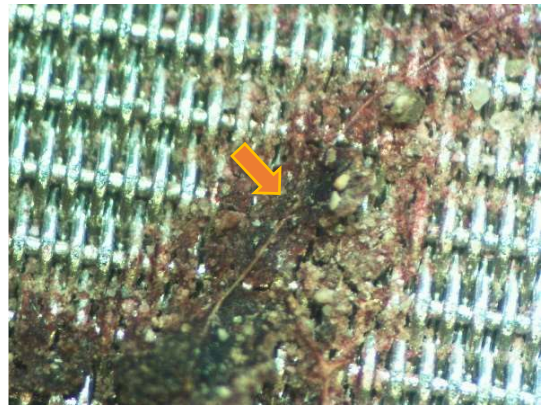
Podzim_S_500_S2Z(30x)



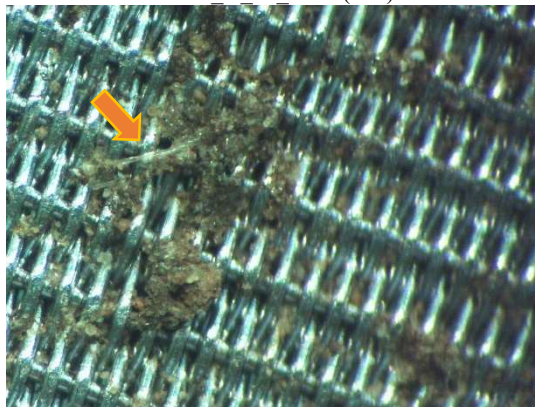
Podzim_S_500_S2Z(30x)_BR



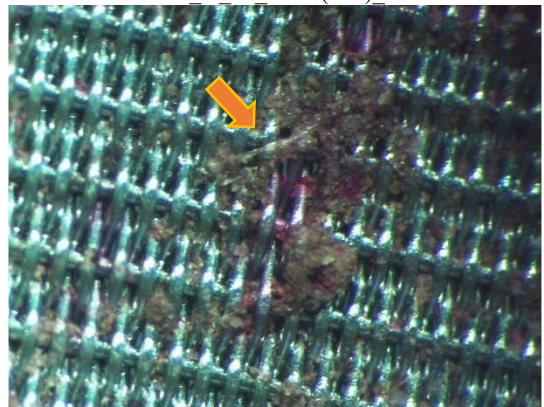
Podzim K 50 2LSS(30x)



Podzim K 50 2LSS(30x) BR



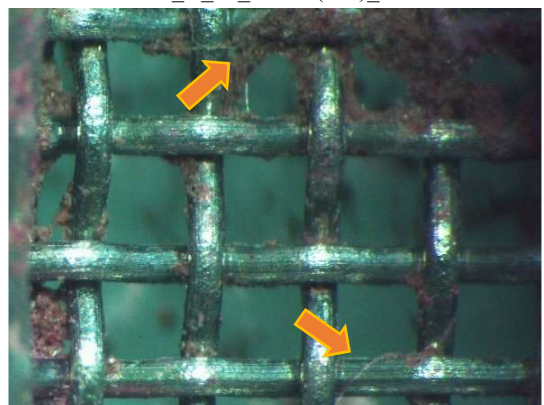
Zima K 50 2LSnS(30x)



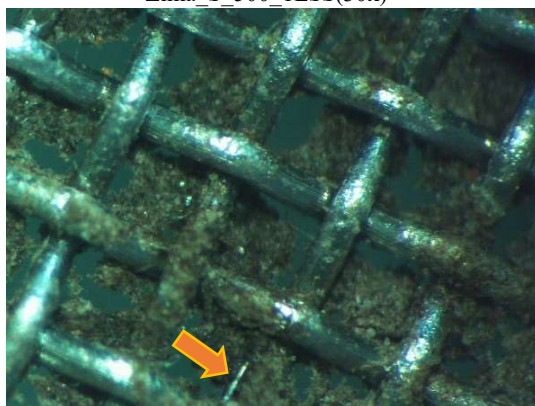
Zima K 50 2LSnS(30x) BR



Zima S 500 1LSS(30x)



Zima K 50 1LSS(30x) BR



Zima S 500 2LS2Z(30x)



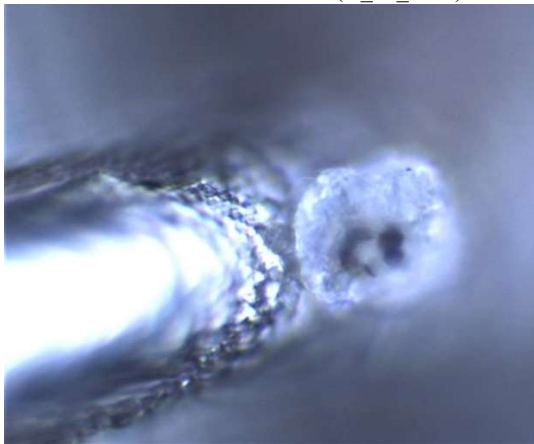
Zima S 500 2LS2Z(30x) BR



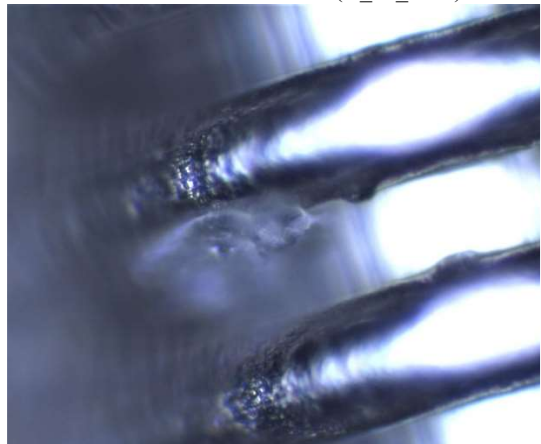
Identifikace MP – **celulóza** (K_25_zima)



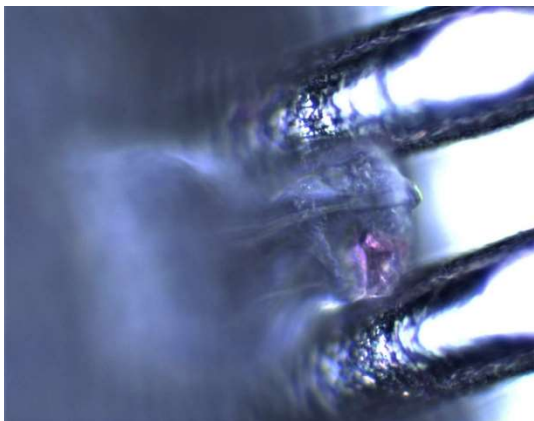
Identifikace MP – **celulóza** (K_25_zima)



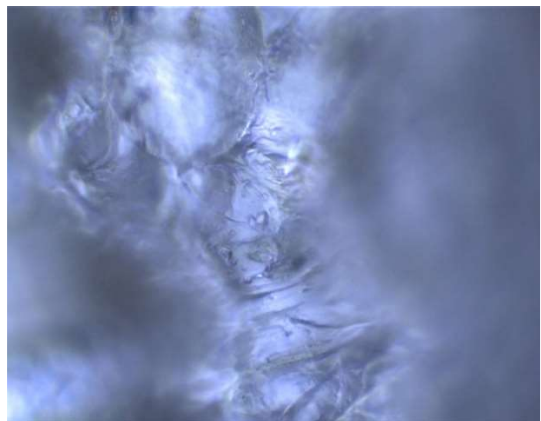
Identifikace MP – **PET** (A_50_jaro)



Identifikace MP – **PET** (A_50_jaro)



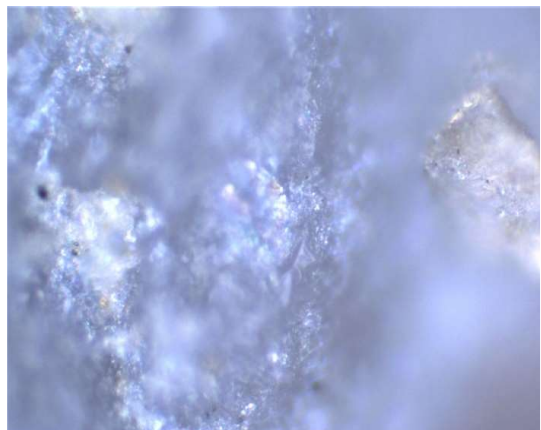
Identifikace MP – **silikon** (A_50_jaro)



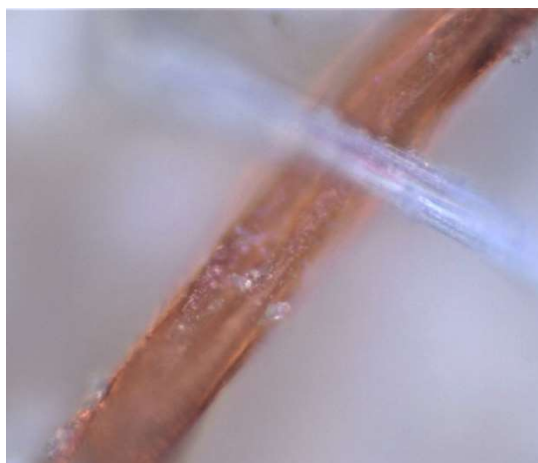
Identifikace MP – **PVC** (A_50_jaro)



Potvrzený mikroplast (K_50_zima)



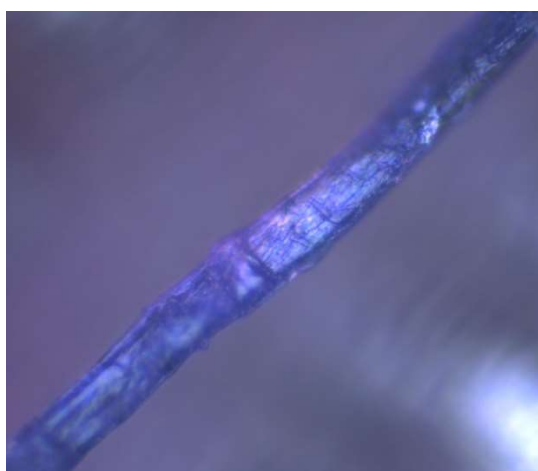
Potvrzený mikroplast (K_50_zima)



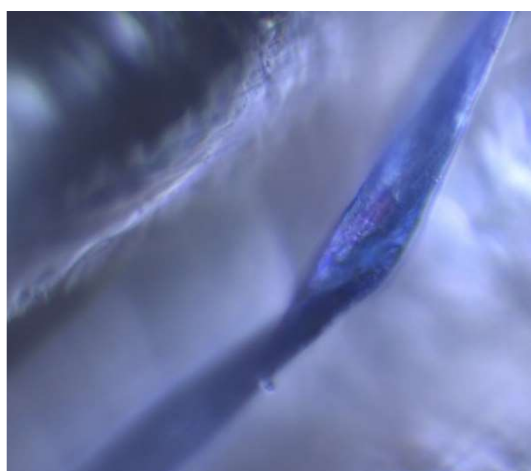
Potvrzený mikroplast (K_25_léto)



Potvrzený mikroplast (A_25_jaro)



Potvrzený mikroplast (A_25_jaro)

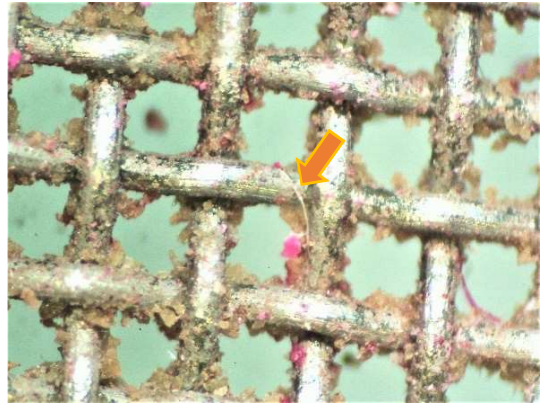


Potvrzený mikroplast (A_50_jaro)

LABE



Léto K 500 S1Z(30x)



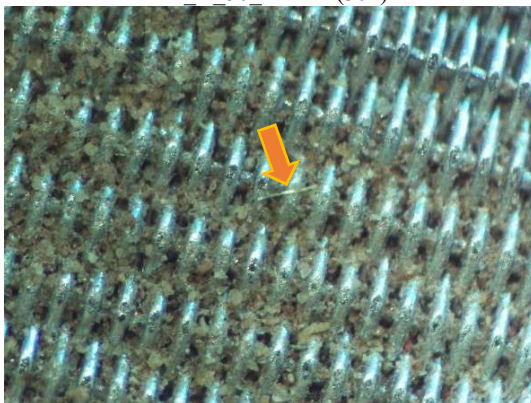
Léto K 500 S1Z(30x) BR



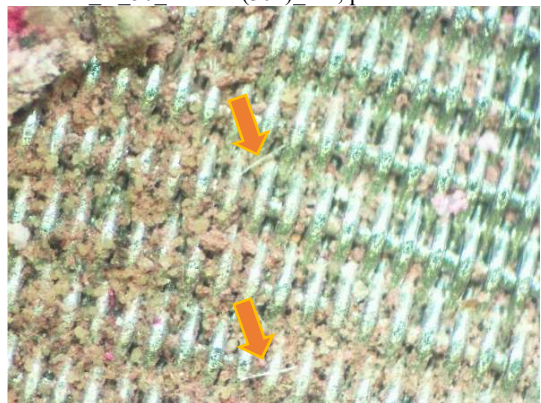
Léto K 50 2LSDO(30x)



Léto K 50 2LSDO(30x) BR, přesun nánosů



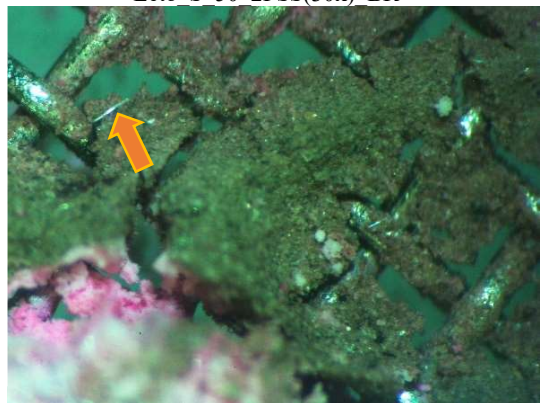
Léto S 50 2PSS(30x)



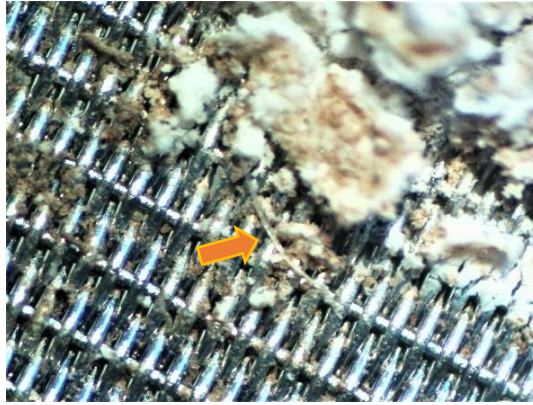
Léto S 50 2PSS(30x) BR



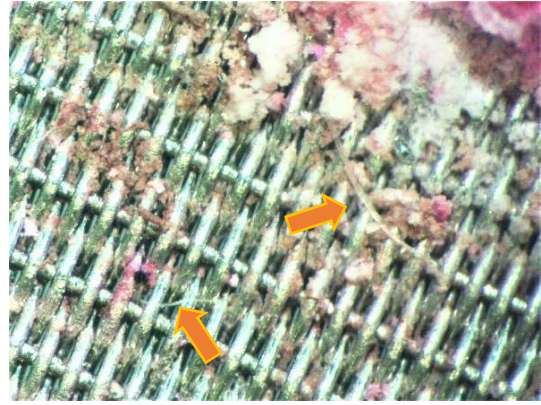
Podzim_K_500_3PSDO(30x)



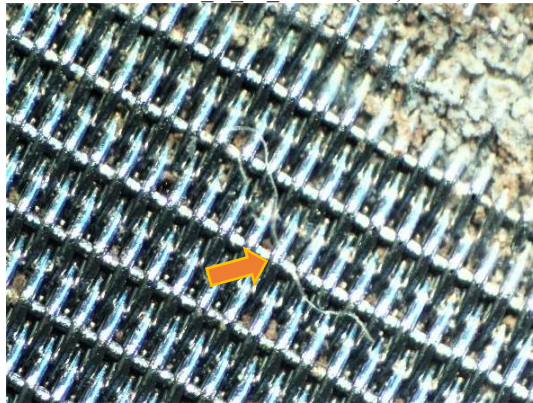
Podzim_K_500_3PSDO(30x)_BR



Podzim K 50 3PSVO(30x)



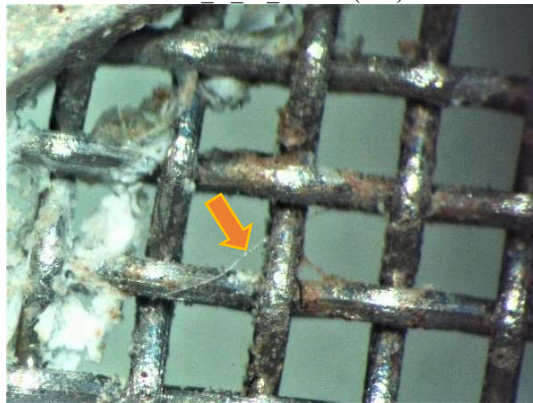
Podzim K 50 3PSVO(30x) BR



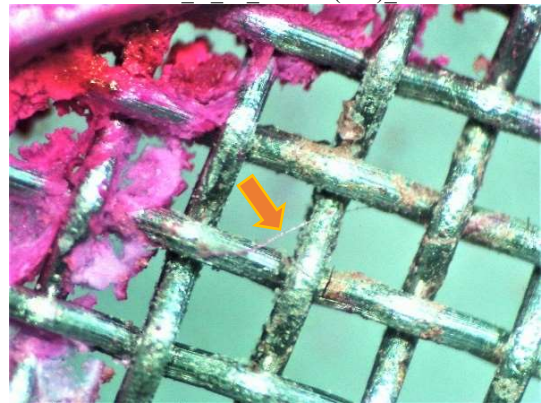
Podzim K 50 2PSVO(30x)



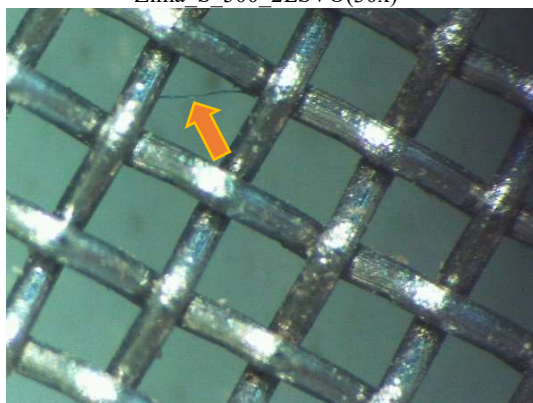
Podzim K 50 2PSVO(30x) BR



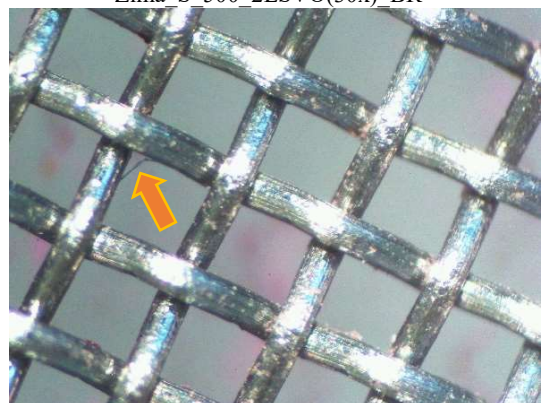
Zima S 500 2LSVO(30x)



Zima S 500 2LSVO(30x) BR



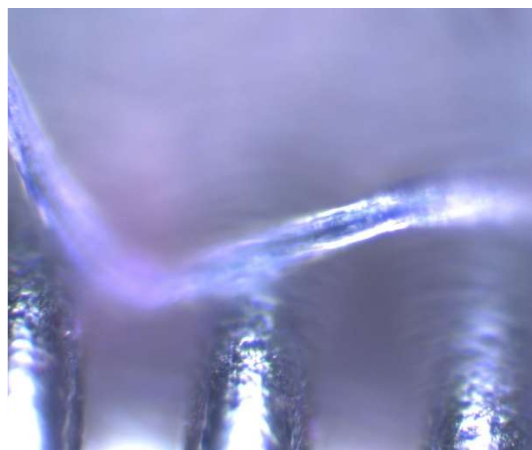
Zima_S_500_2PS1Z(30x)



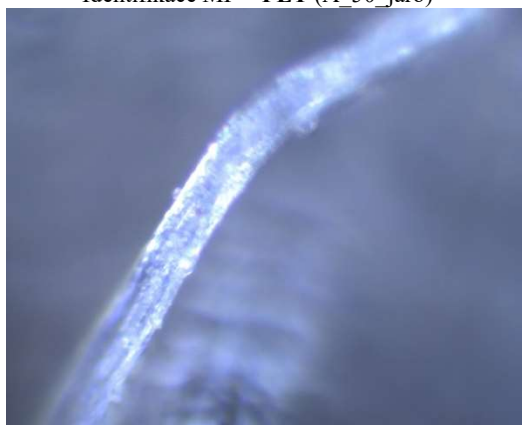
Zima_S_500_2PS1Z(30x)_BR



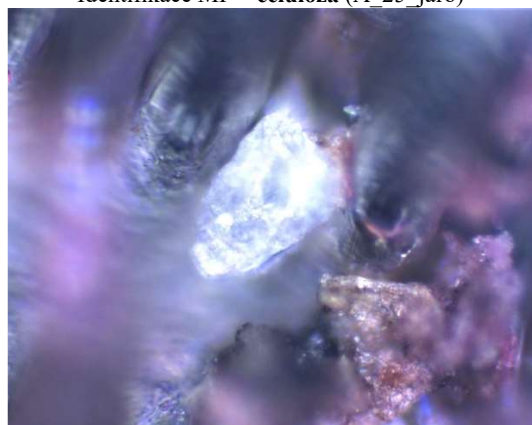
Identifikace MP – **PET** (A_50_jaro)



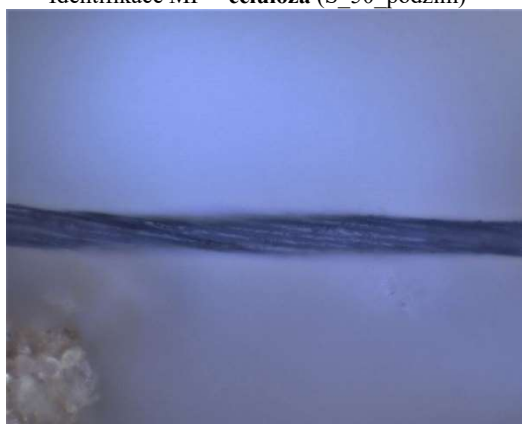
Identifikace MP – **celulóza** (A_25_jaro)



Identifikace MP – **celulóza** (S_50_podzim)



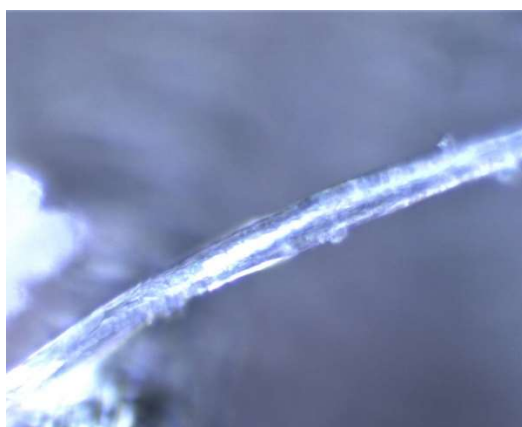
Potvrzený mikroplast (A_50_jaro)



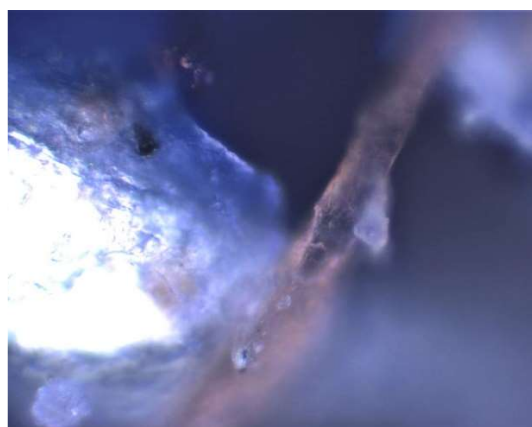
Potvrzený mikroplast (S_25_léto)



Potvrzený mikroplast (K_25_podzim)



Potvrzený mikroplast (S_50_podzim)

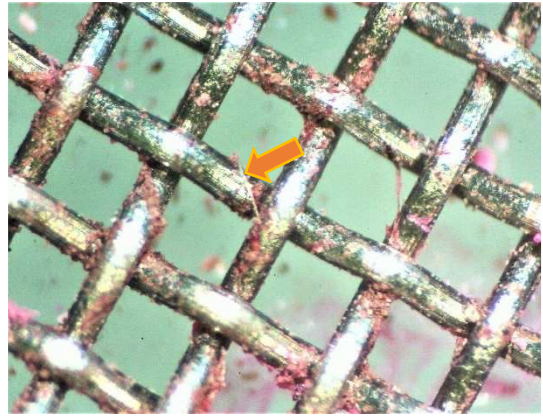


Potvrzený mikroplast (K_50_zima)

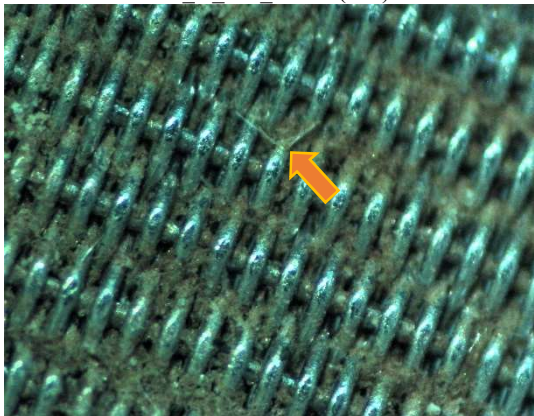
JIZERA



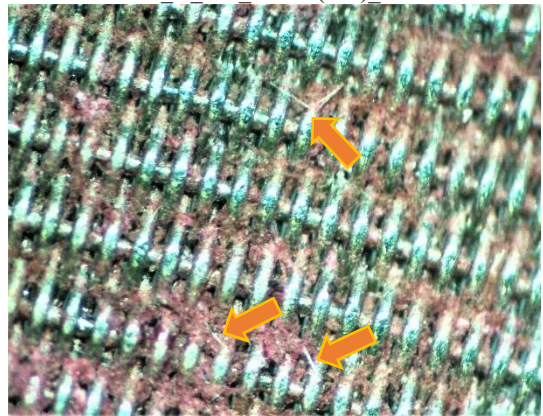
Léto K 500 2PS2Z(30x)



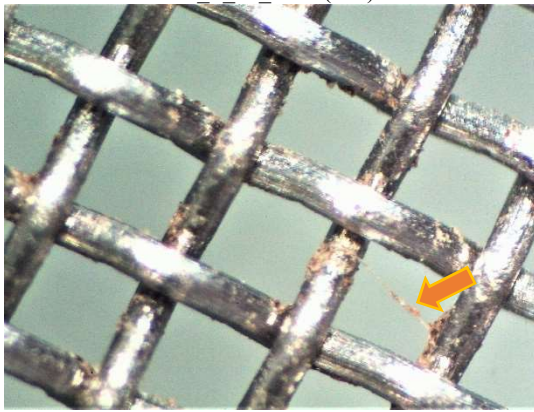
Léto K 500 2PS2Z(30x) BR



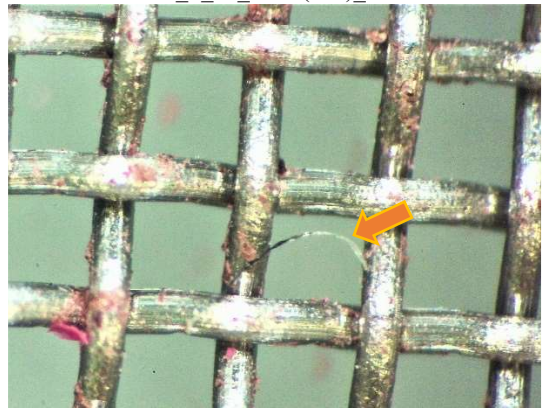
Léto S 50 3PSS(30x)



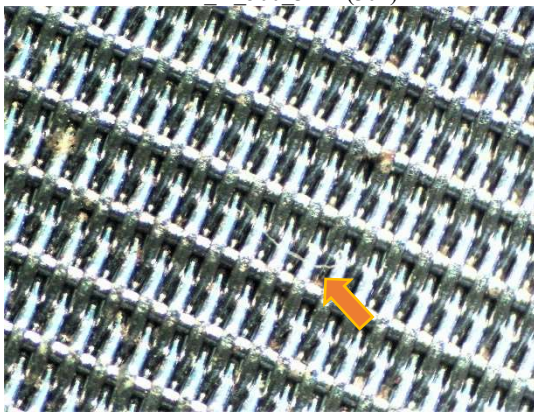
Léto S 50 3PSS(30x) BR



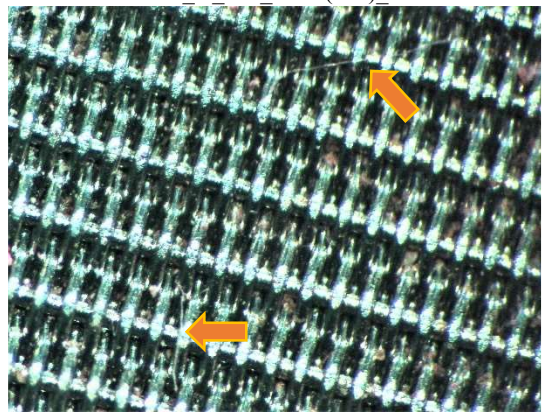
Podzim K 500 3PSS(30x)



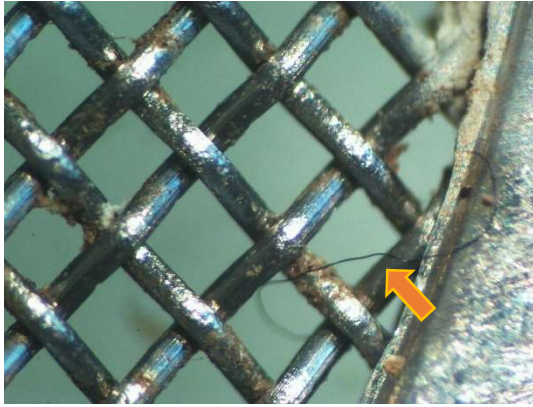
Podzim K 500 3PSS(30x) BR



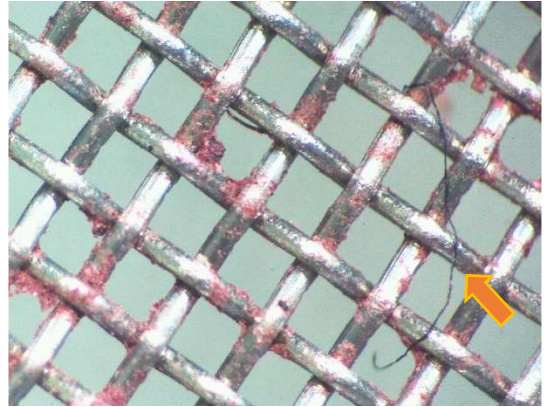
Podzim K 50 3PSS(30x)



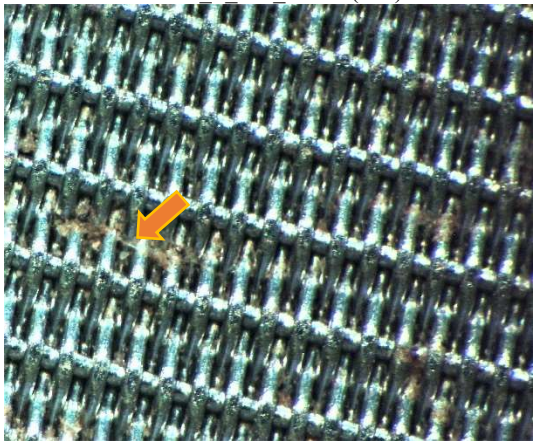
Podzim K 50 3PSS(30x) BR



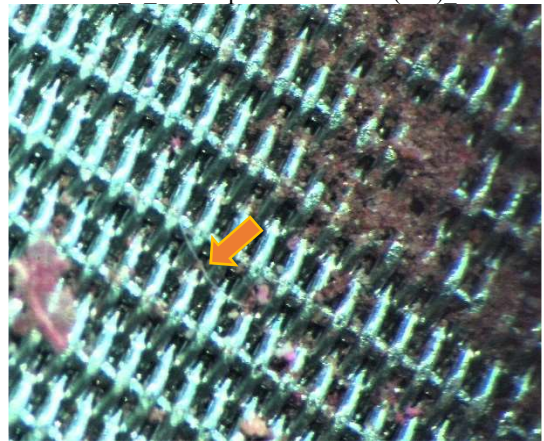
Podzim S 500 1PS1Z(30x)



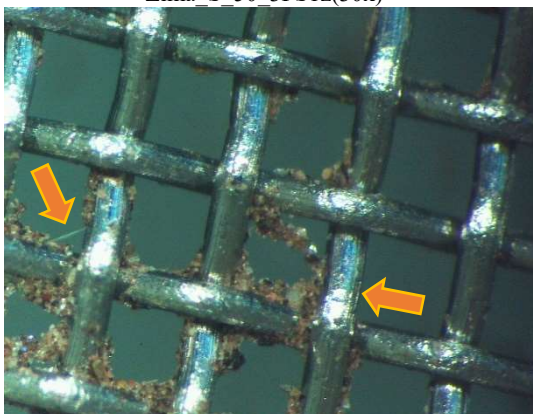
Podzim S 500 odplaven na 3PS1Z(20x) BR



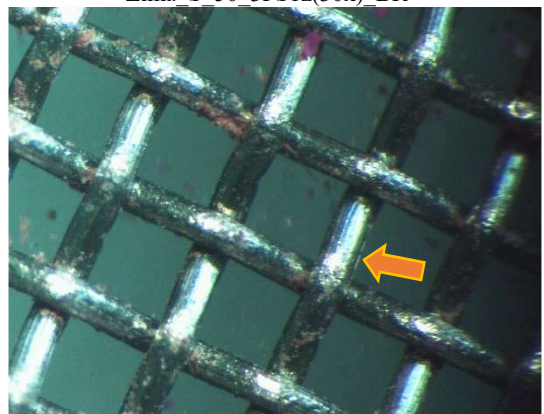
Zima S 50 3PS1z(30x)



Zima S 50 3PS1z(30x) BR



Zima K 500 3LSpS(30x)



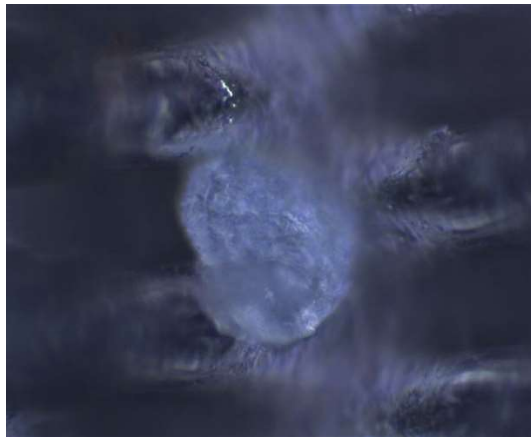
Zima K 500 3LSpS(30x) BR



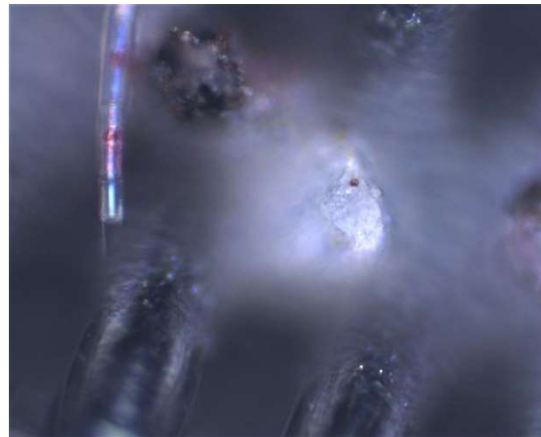
Zima_K_500_3PSVO(30x)



Zima_K_500_3PSVO(30x)_BR



Identifikace MP – PE (A_50_jaro)



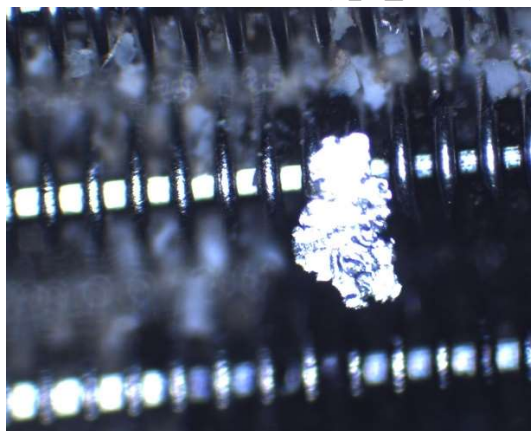
Identifikace MP – PET (A_50_jaro)



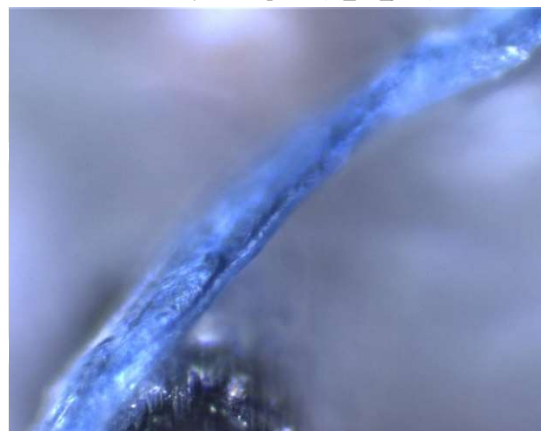
Identifikace MP – celulóza (K_25_podzim)



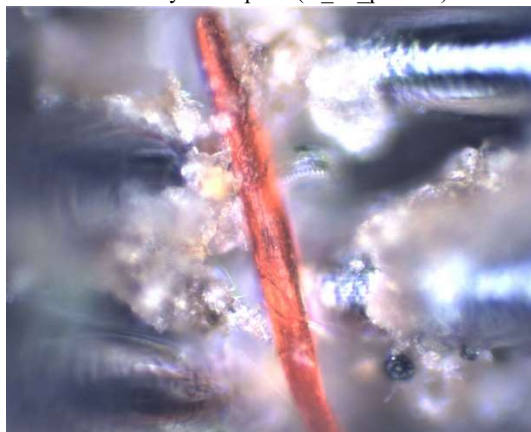
Potvrzený mikroplast (A_50_jaro)



Potvrzený mikroplast (K_25_podzim)



Potvrzený mikroplast (S_50_podzim)



Potvrzený mikroplast (A_25_jaro)



Potvrzený mikroplast (K_50_léto)