

## OBRAZOVÉ PŘÍLOHY

Během kvantitativní analýzy bylo provedeno 2310 fotografií díky binokulárnímu mikroskopu s videookulárem. Další 189 fotografií vybraných částic bylo vytvořeno Mgr. Martinem Lexou, Ph.D. během kvalitativní analýzy s identifikací díky Ramanově spektroskopii. Vzhledem k množství pořízených fotografií byly vybrány pouze reprezentativní kusy z každé řeky a uvedeny v příloze v pořadí:

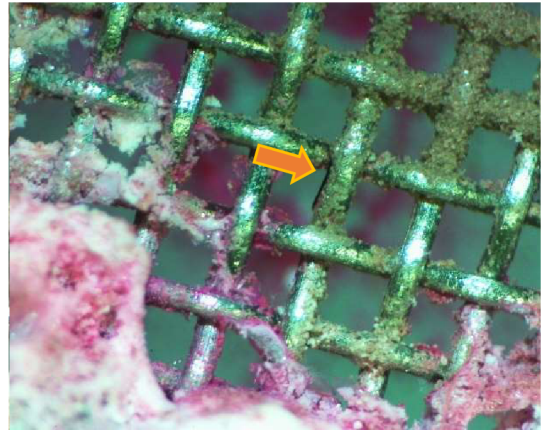
- vybrané dvojice fotografií pořízené binokulárním mikroskopem před a po obarvení,
- mikroplasty potvrzené Ramanovou spektroskopií.

Každá fotografie má své označení vzorkování, při kterém byl daný mikroplast získán: K (pasivní metodou, košík) či S (pasivní metodou, svorka), A (aktivní metodou), označení filtru 50  $\mu\text{m}$  či 500  $\mu\text{m}$ , zvětšení, pozice na mřížce, barvení bengálskou červení (BR) a roční období. Fotografie získané pomocí Ramanovy spektroskopie jsou buď charakterizovány přímo typem mikroplastu či jsou identifikovány jako „Potvrzený mikroplast“ – částice, která má mikroplastový charakter, ale kvůli změně povrchu jí nebylo možné jednoznačně identifikovat.

# MORAVA



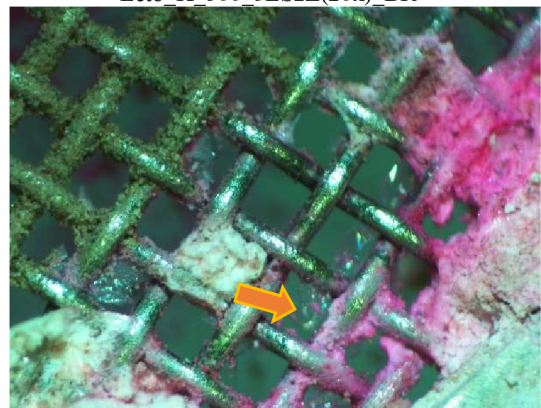
Léto\_K\_500\_3LS2Z(20x)



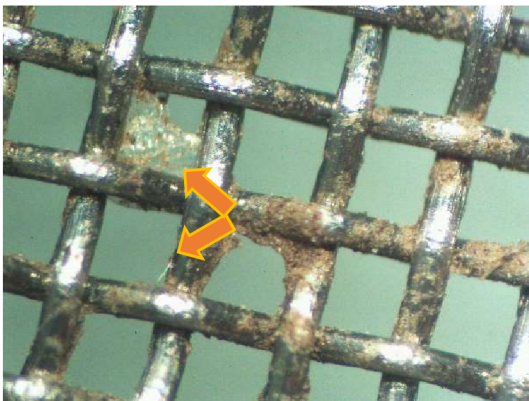
Léto\_K\_500\_3LS2Z(20x)\_BR



Léto\_K\_500\_1PSS(20x)



Léto\_K\_500\_1PSS(20x)\_BR



Podzim\_S\_500\_2PSSS(30x)



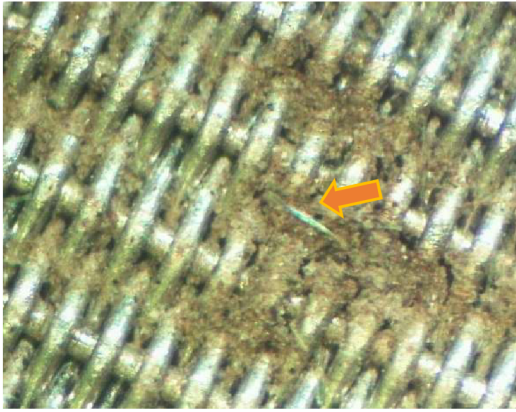
Podzim\_S\_500\_2PSSS(30x)\_BR



Podzim\_S\_50\_2LSDO(30x)



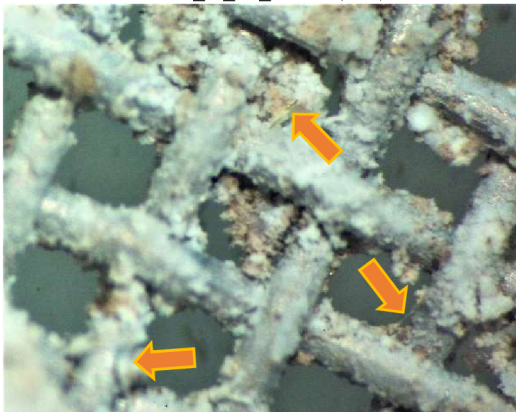
Podzim\_S\_50\_2LSDO(30x)\_BR



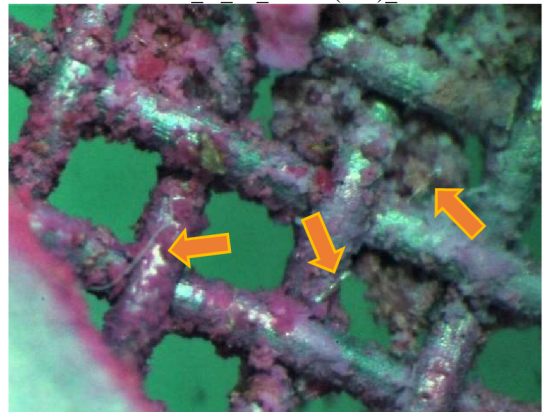
Podzim\_K\_50\_3PSnS(30x)



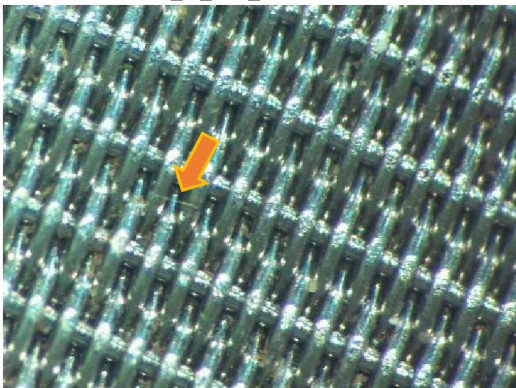
Podzim\_K\_50\_3PSnS(30x)\_BR



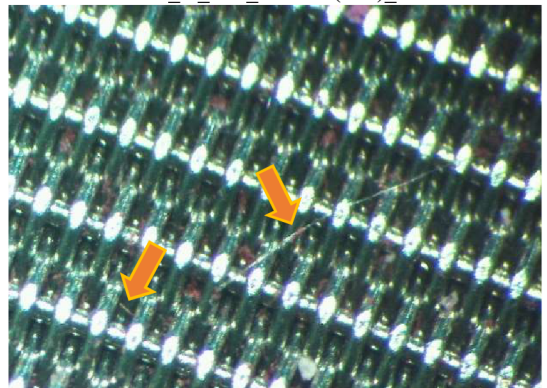
Zima\_K\_500\_2LSDO(30x)



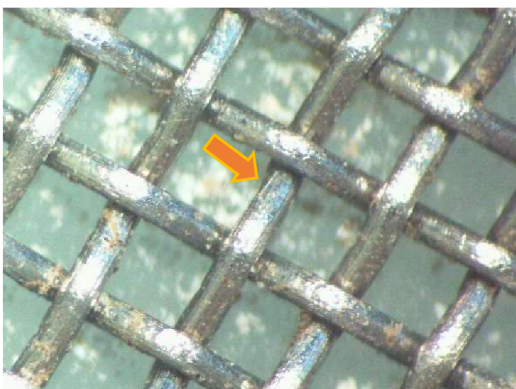
Zima\_K\_500\_2LSDO(30x)\_BR



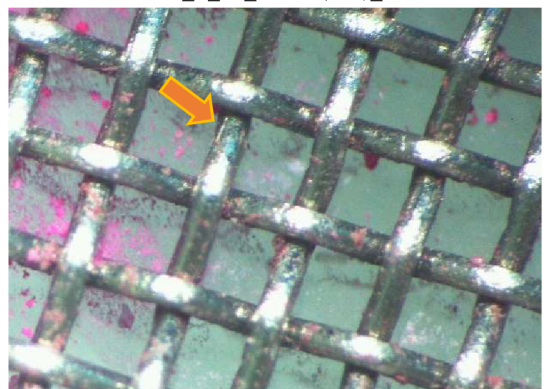
Zima\_S\_50\_3LS2z(30x)



Zima\_S\_50\_3LS2z(30x)\_BR



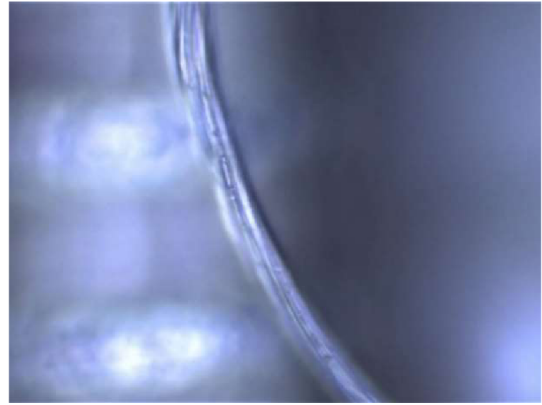
Zima\_S\_500\_3PS2z(30x)



Zima\_S\_500\_3PS2z(30x)\_BR



Identifikace MP – **PET** (S\_50\_zima)



Potvrzený mikroplast (S\_25\_zima)



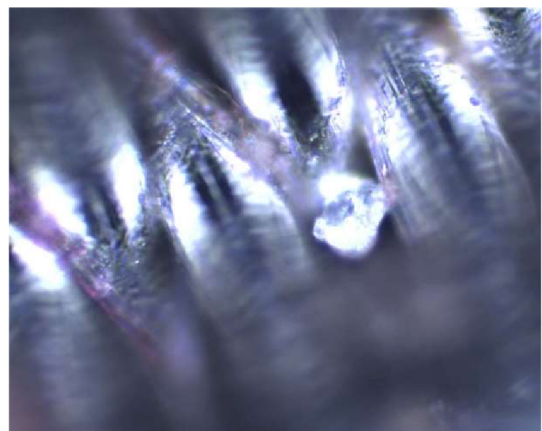
Potvrzený mikroplast (K\_25\_léto)



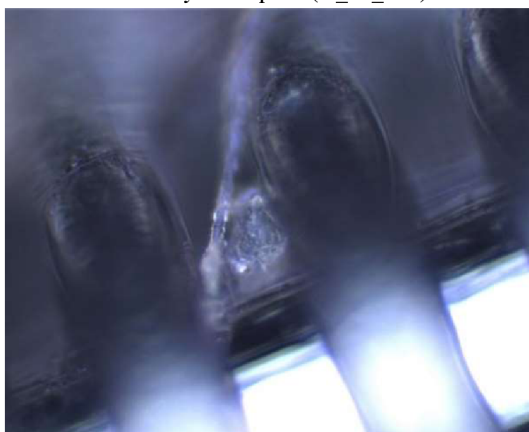
Potvrzený mikroplast (K\_50\_léto)



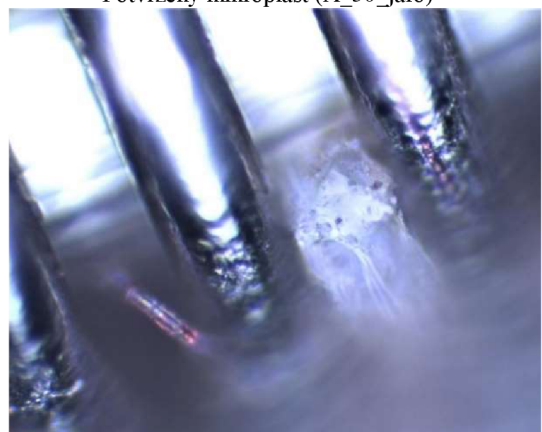
Potvrzený mikroplast (K\_50\_léto)



Potvrzený mikroplast (A\_50\_jaro)

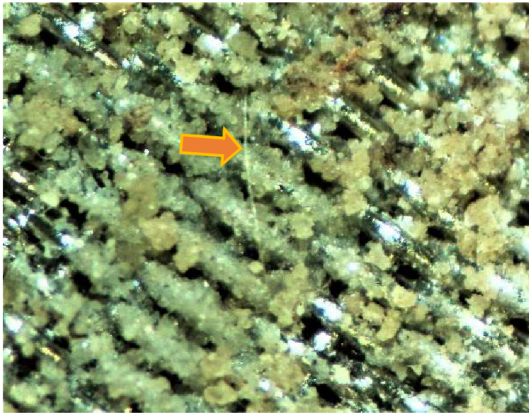


Potvrzený mikroplast (A\_50\_jaro)

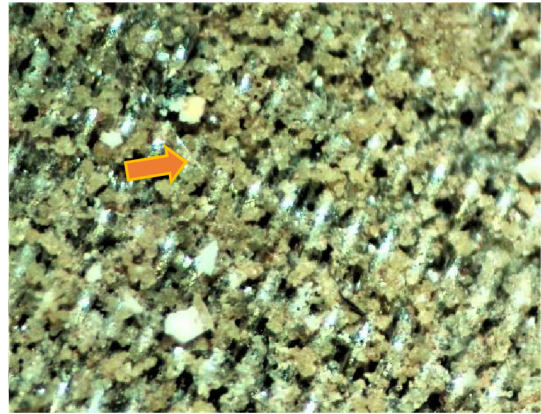


Potvrzený mikroplast (A\_50\_jaro)

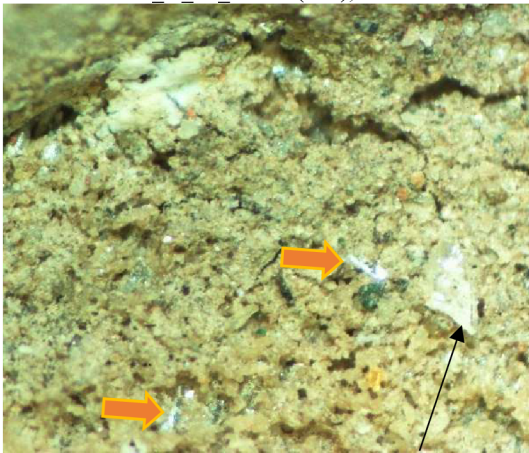
# BEČVA



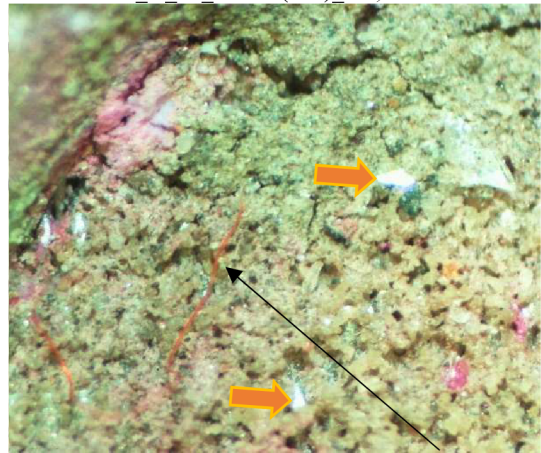
Létó\_K\_50\_3LS2Z(30x), nános



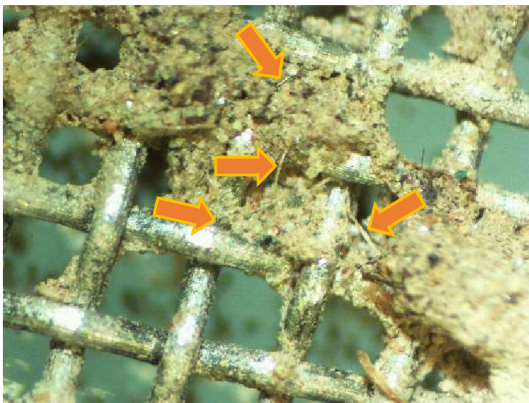
Létó\_K\_50\_3LS2Z(30x)\_BR, nános



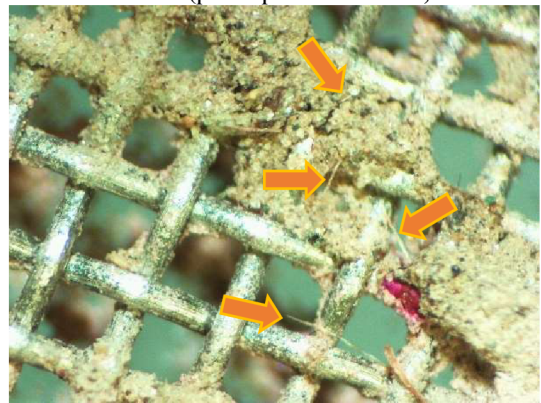
Létó\_S\_50\_2LS1Z(30x), nános; úloček Al filtru



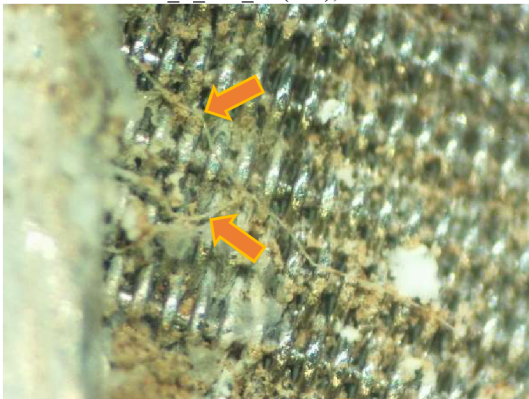
Létó\_S\_50\_2LS1Z(30x)\_BR, nános; organický materiál (pravděpodobně kořinek)



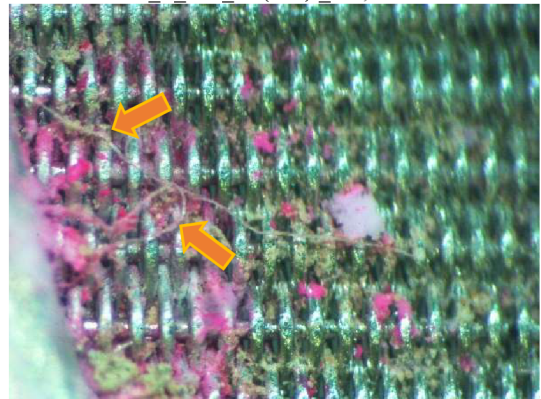
Létó\_S\_500\_SS(30x), nános



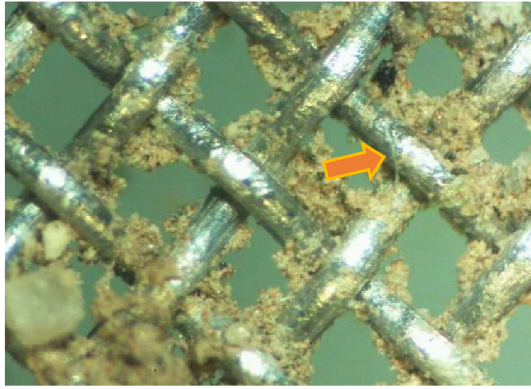
Létó\_S\_500\_SS(30x)\_BR, nános



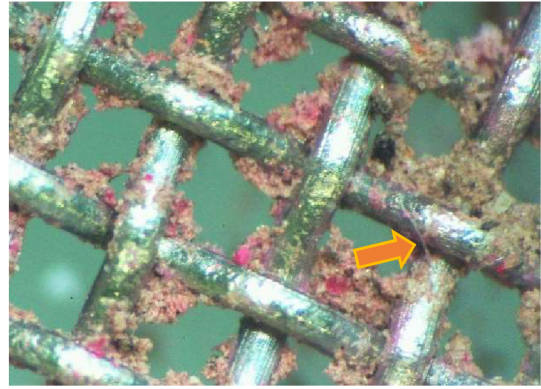
Podzim\_K\_50\_ILS2Z(30x)



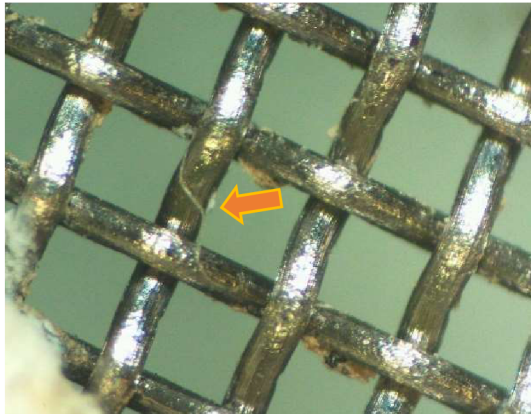
Podzim\_K\_50\_ILS2Z(30x)\_BR



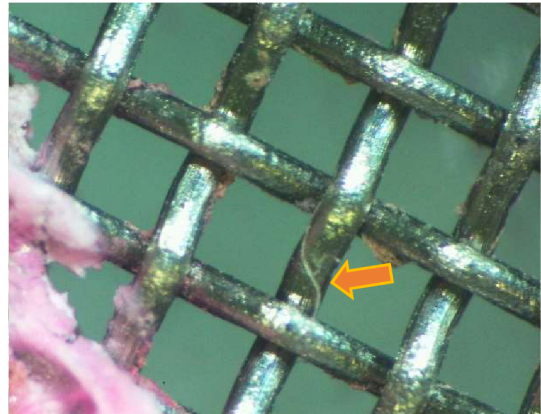
Podzim\_K\_500\_2PS2Z(30x)



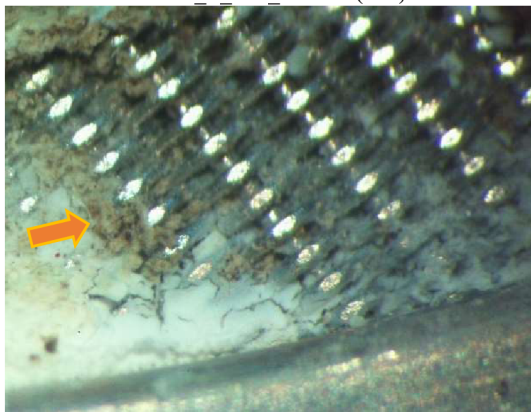
Podzim\_K\_500\_2PS2Z(30x)\_BR



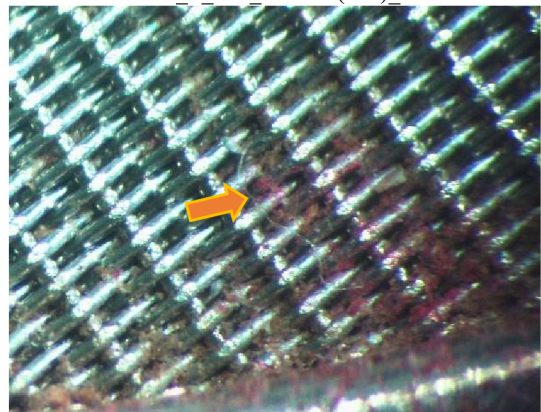
Podzim\_S\_500\_3LSDO(30x)



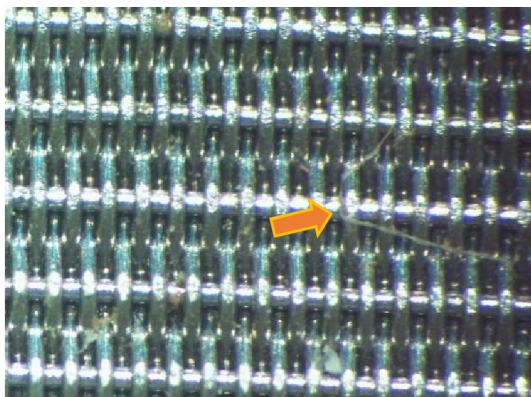
Podzim\_S\_500\_3LSDO(30x)\_BR



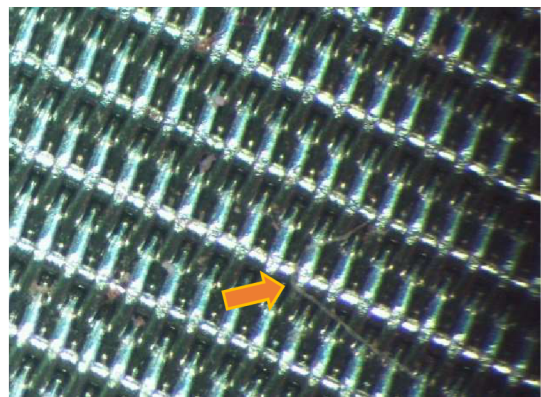
Zima\_K\_50\_1PSDO(30x)



Zima\_K\_50\_1PSDO(30x)\_BR



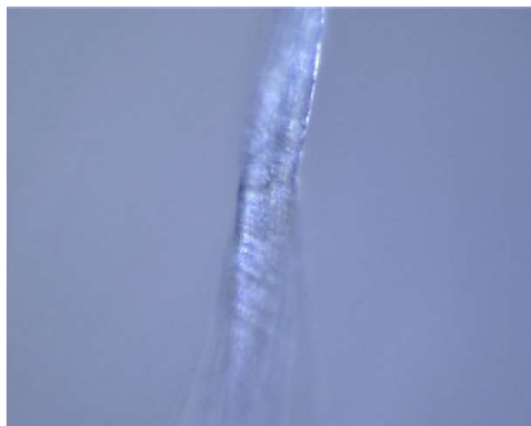
Zima\_S\_50\_2PSS(30x)



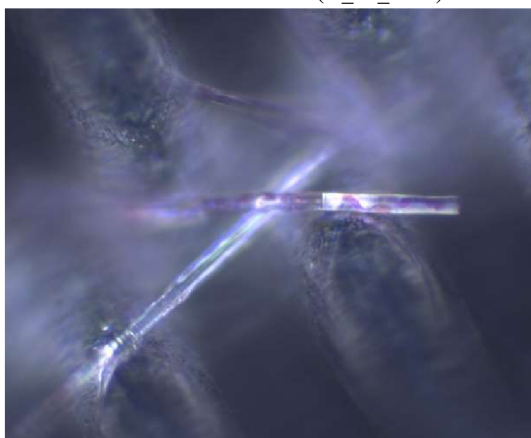
Zima\_S\_50\_2PSS(30x)



Identifikace MP – **PET** (K\_25\_zima)



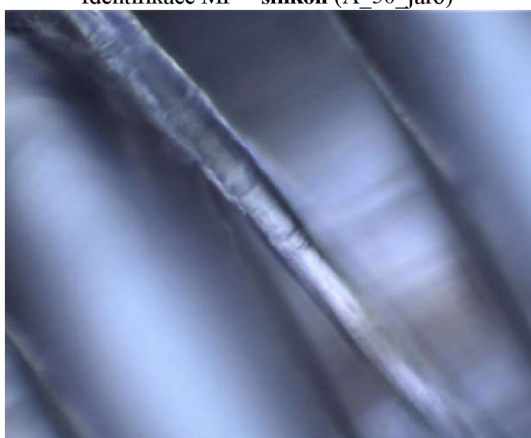
Identifikace MP – **celulóza** (K\_25\_zima)



Identifikace MP – **silikon** (A\_50\_jaro)



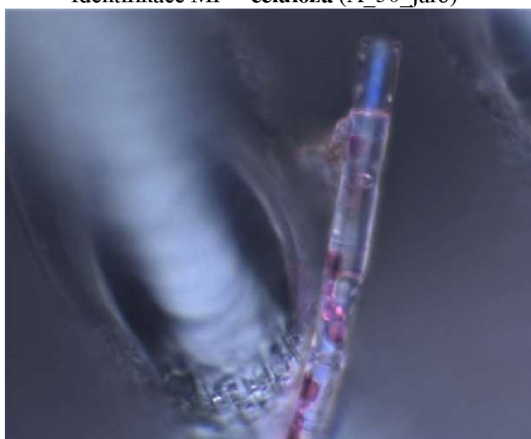
Identifikace MP – **nylon** (A\_50\_jaro)



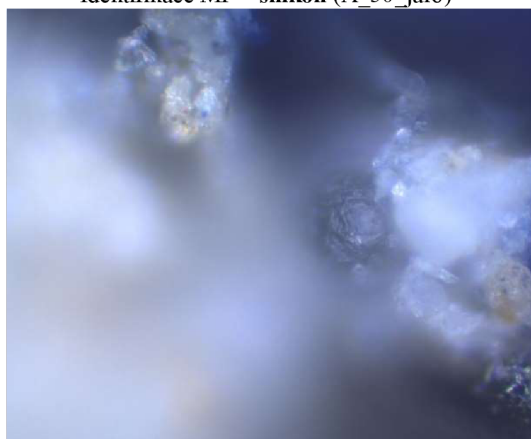
Identifikace MP – **celulóza** (A\_50\_jaro)



Identifikace MP – **silikon** (A\_50\_jaro)



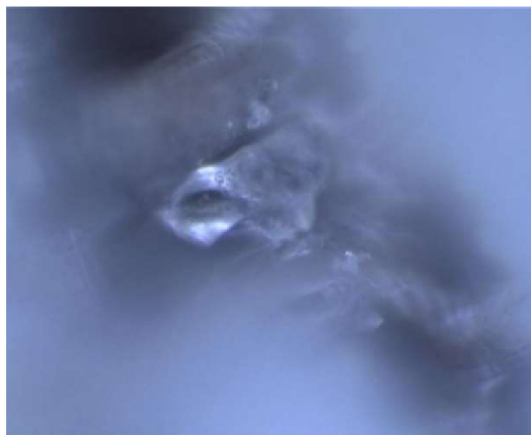
Identifikace MP – **silikon** (A\_50\_jaro)



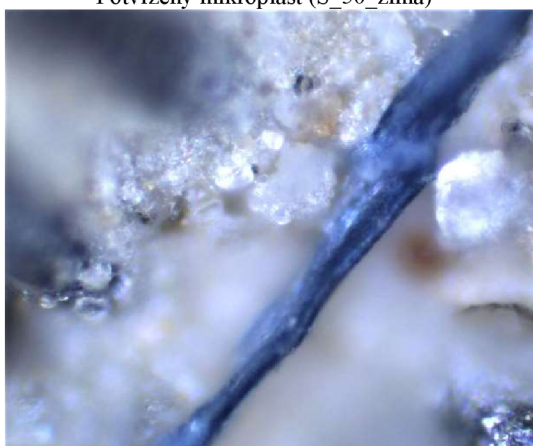
Identifikace MP - **PE** (S\_25\_léto)



Potvrzený mikroplast (S\_50\_zima)



Potvrzený mikroplast (S\_25\_podzim)



Potvrzený mikroplast (K\_25\_léto)



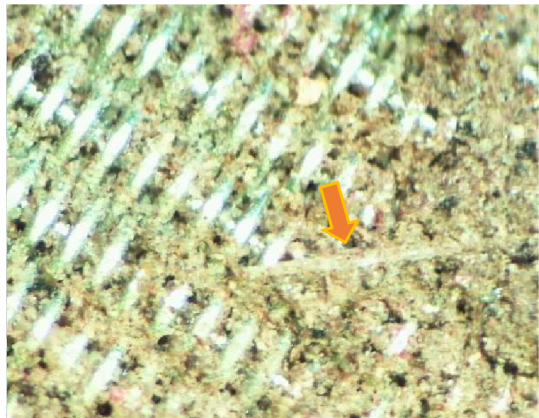
Potvrzený mikroplast (S\_25\_léto)



# HANÁ



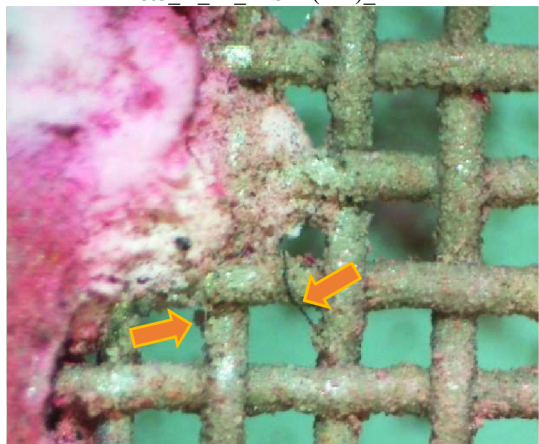
Léto\_K\_50\_2PS2Z(30x)



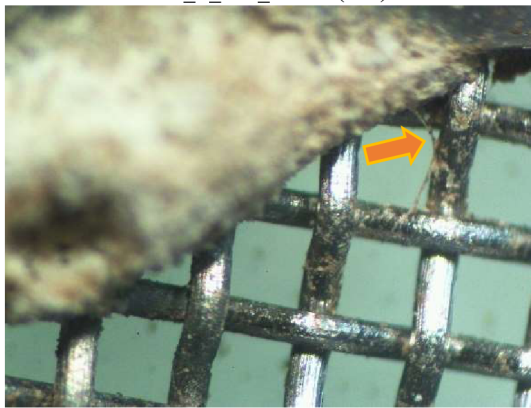
Léto\_K\_50\_2PS2Z(30x)\_BR



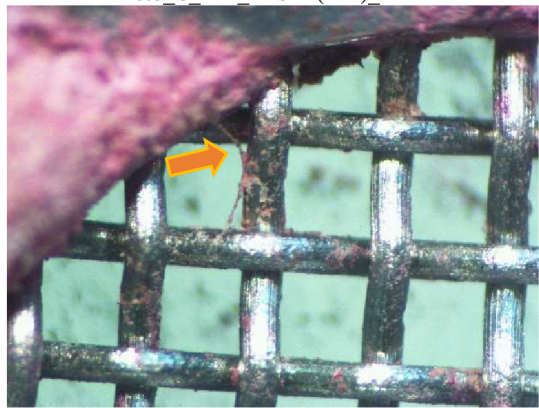
Léto\_S\_500\_1LS1Z(30x)



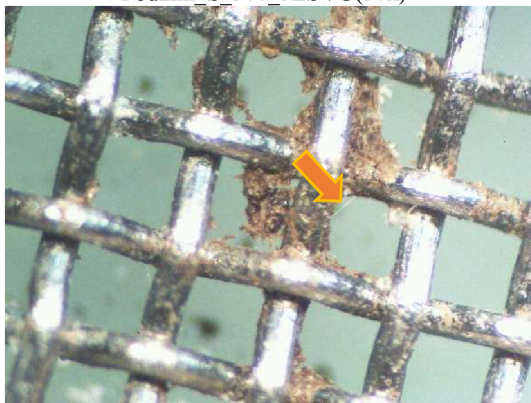
Léto\_S\_500\_1LS1Z(30x)\_BR



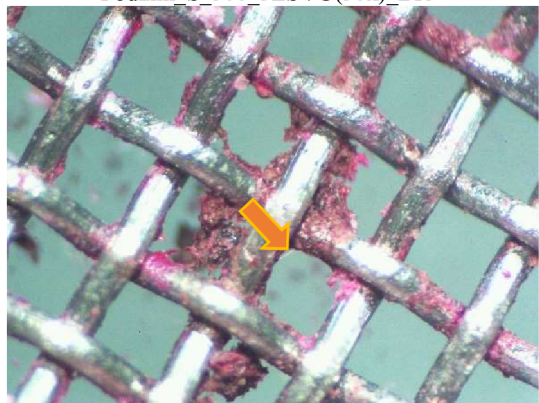
Podzim\_S\_500\_3LSVO(30x)



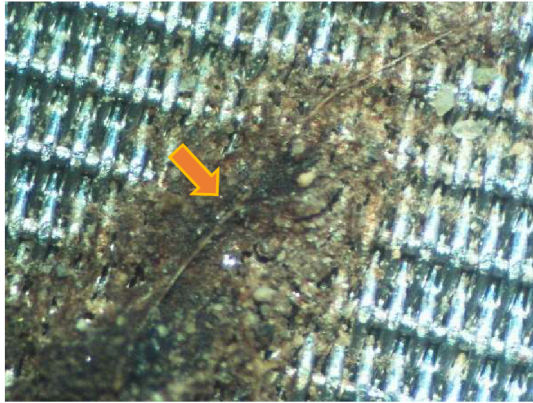
Podzim\_S\_500\_3LSVO(30x)\_BR



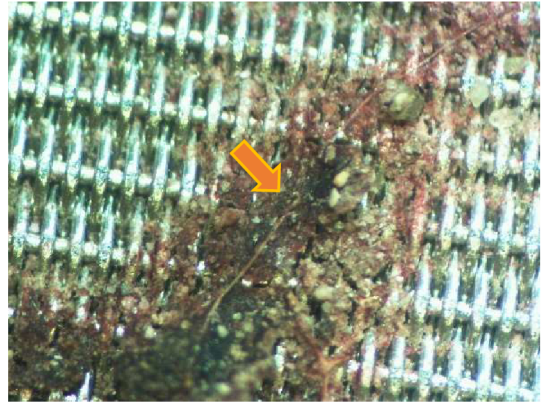
Podzim\_S\_500\_S2Z(30x)



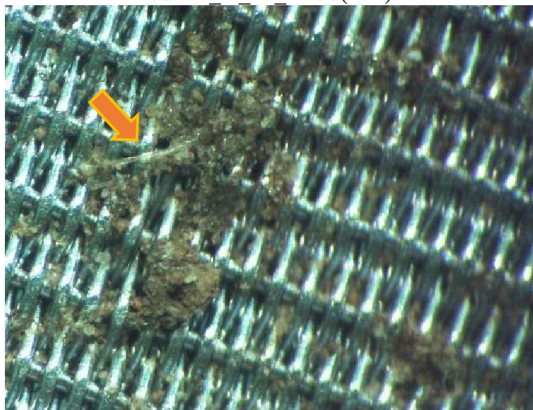
Podzim\_S\_500\_S2Z(30x)\_BR



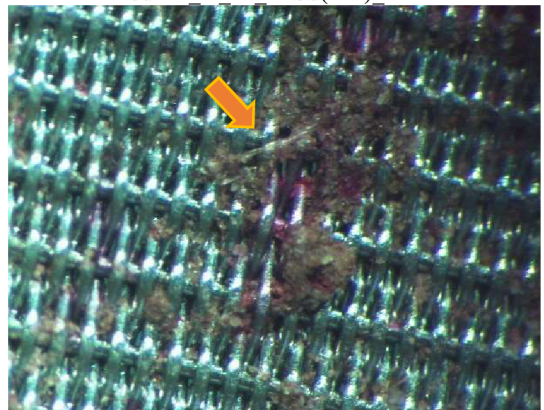
Podzim K 50 2LSS(30x)



Podzim K 50 2LSS(30x)\_BR



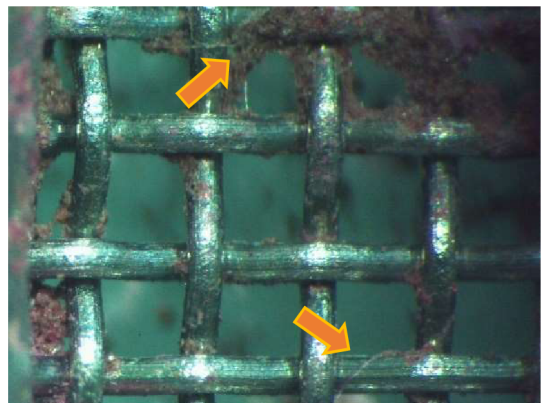
Zima K 50 2LSnS(30x)



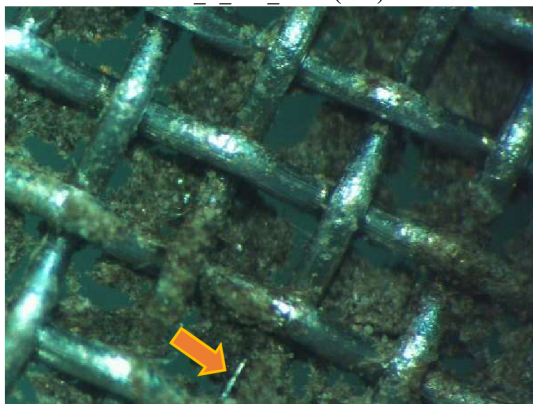
Zima K 50 2LSnS(30x)\_BR



Zima S 500 1LSS(30x)



Zima K 50 1LSS(30x)\_BR



Zima S 500 2LS2Z(30x)



Zima S 500 2LS2Z(30x)\_BR



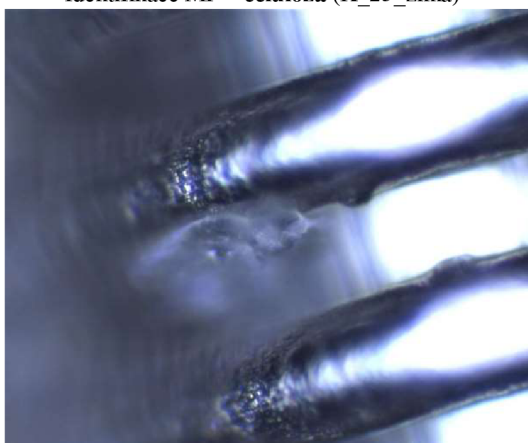
Identifikace MP – **celulóza** (K\_25\_zima)



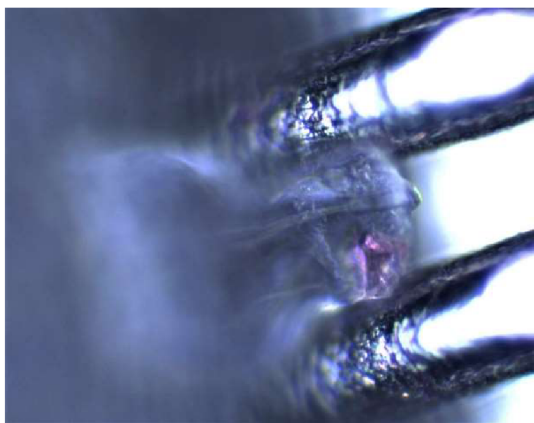
Identifikace MP – **celulóza** (K\_25\_zima)



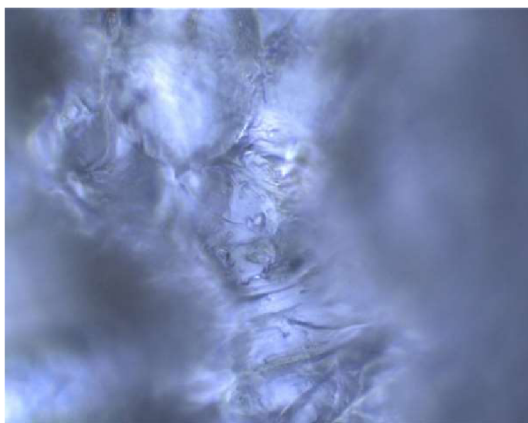
Identifikace MP – **PET** (A\_50\_jaro)



Identifikace MP – **PET** (A\_50\_jaro)



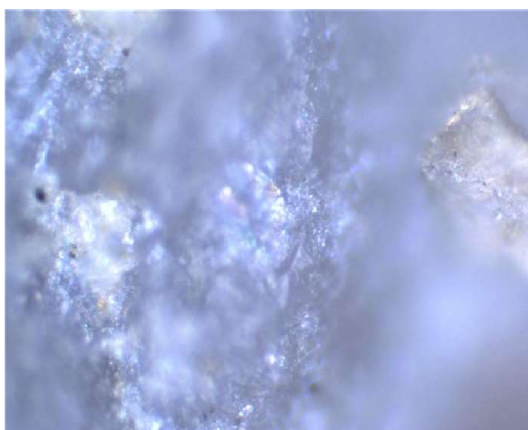
Identifikace MP – **silikon** (A\_50\_jaro)



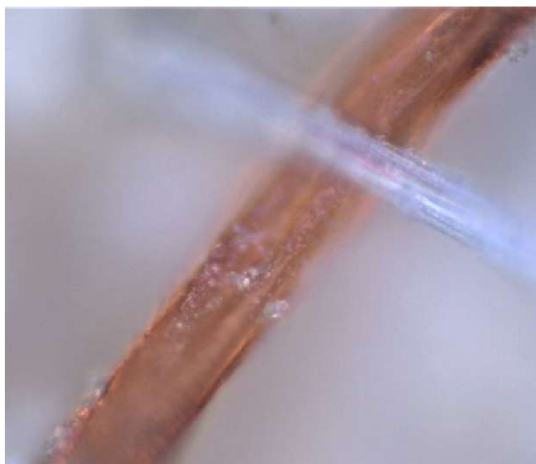
Identifikace MP – **PVC** (A\_50\_jaro)



Potvrzený mikroplast (K\_50\_zima)



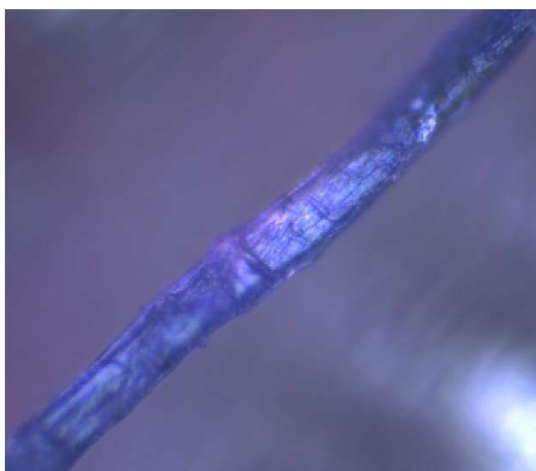
Potvrzený mikroplast (K\_50\_zima)



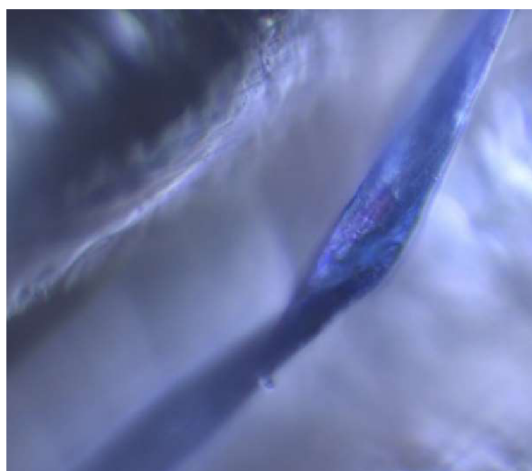
Potvrzený mikroplast (K\_25\_léto)



Potvrzený mikroplast (A\_25\_jaro)

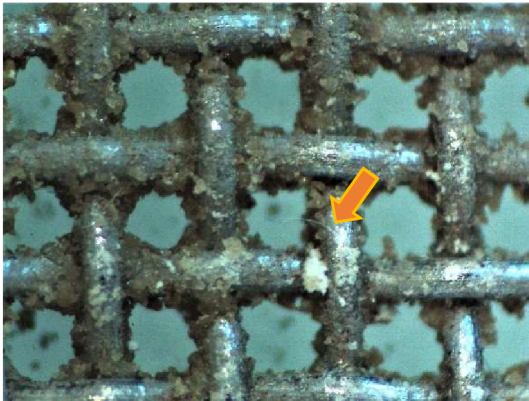


Potvrzený mikroplast (A\_25\_jaro)



Potvrzený mikroplast (A\_50\_jaro)

# LABE



Léto K 500 S1Z(30x)



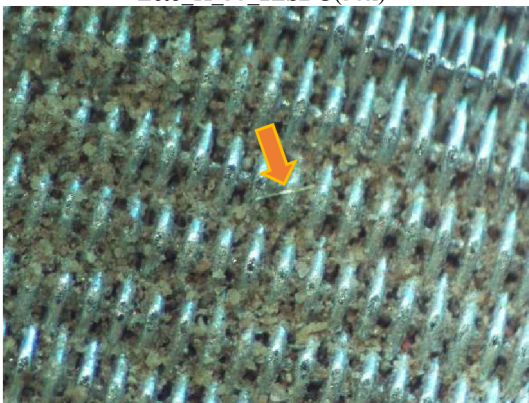
Léto K 500 S1Z(30x)\_BR



Léto K 50 2LSDO(30x)



Léto K 50 2LSDO(30x)\_BR, přesun nánosů



Léto S 50 2PSS(30x)



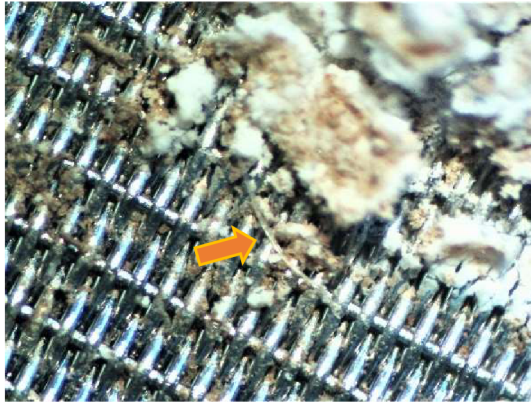
Léto S 50 2PSS(30x)\_BR



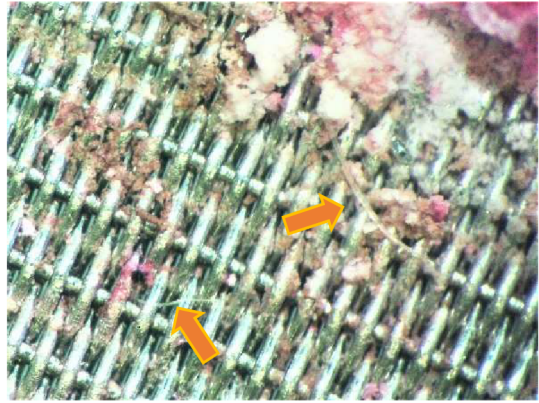
Podzim K 500 3PSDO(30x)



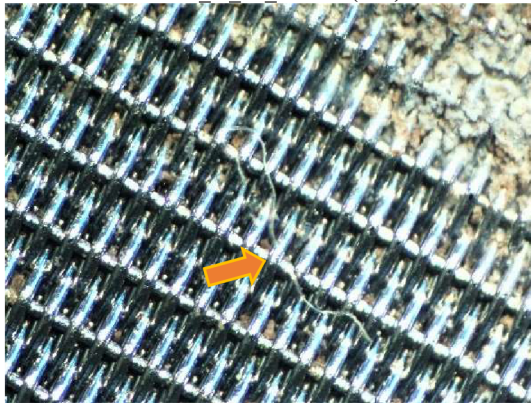
Podzim K 500 3PSDO(30x)\_BR



Podzim\_K\_50\_3PSVO(30x)



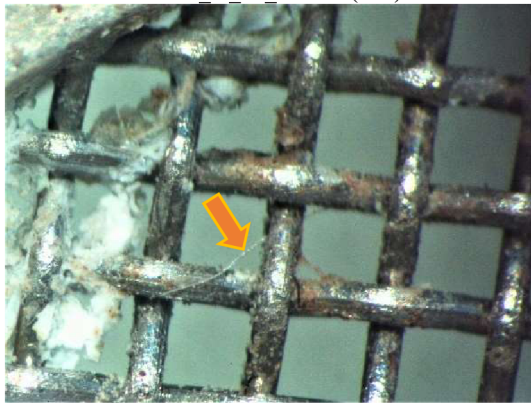
Podzim\_K\_50\_3PSVO(30x)\_BR



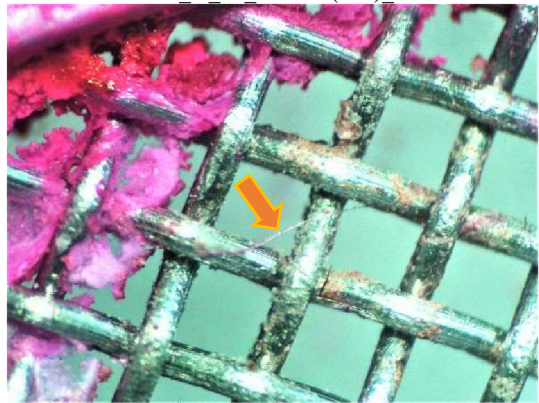
Podzim\_K\_50\_2PSVO(30x)



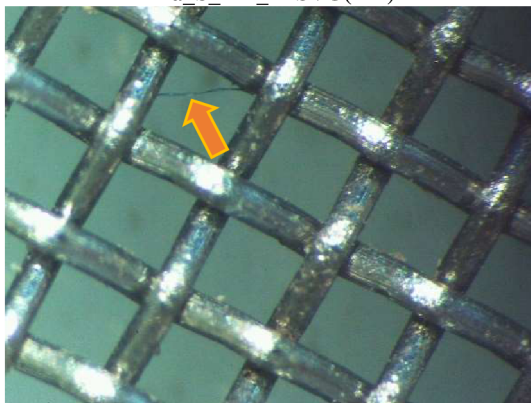
Podzim\_K\_50\_2PSVO(30x)\_BR



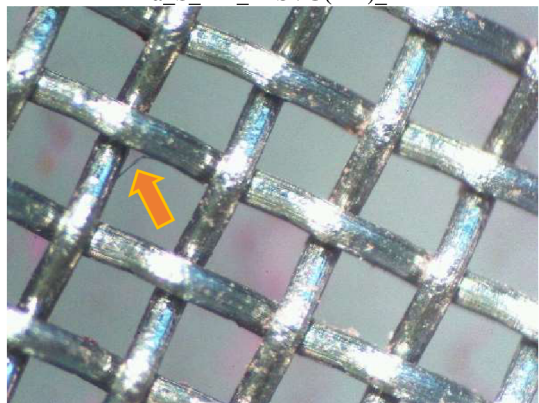
Zima\_S\_500\_2LSVO(30x)



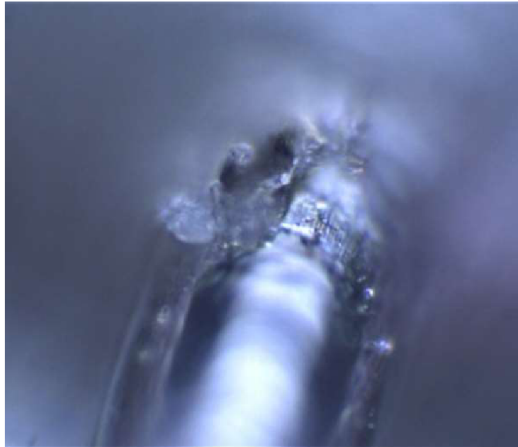
Zima\_S\_500\_2LSVO(30x)\_BR



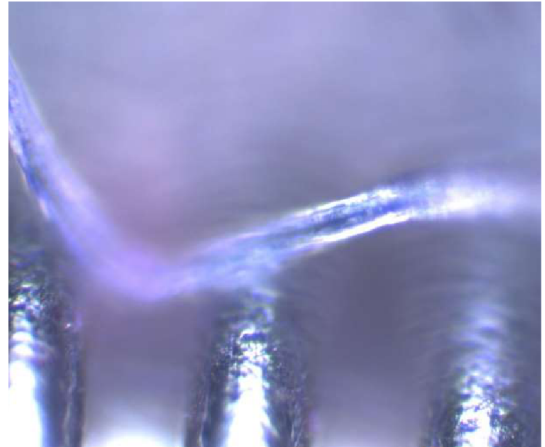
Zima\_S\_500\_2PSIZ(30x)



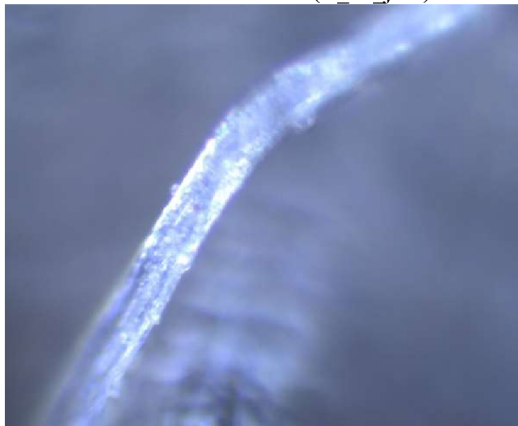
Zima\_S\_500\_2PSIZ(30x)\_BR



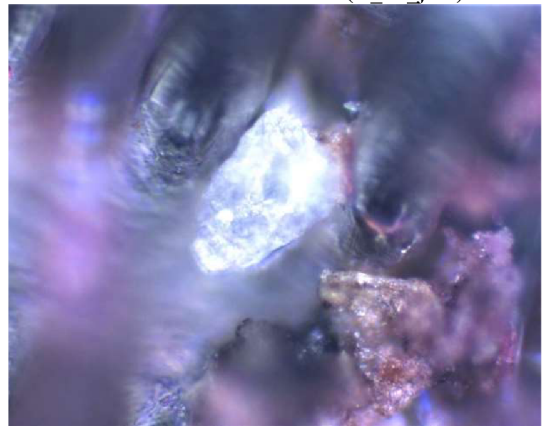
Identifikace MP – **PET** (A\_50\_jaro)



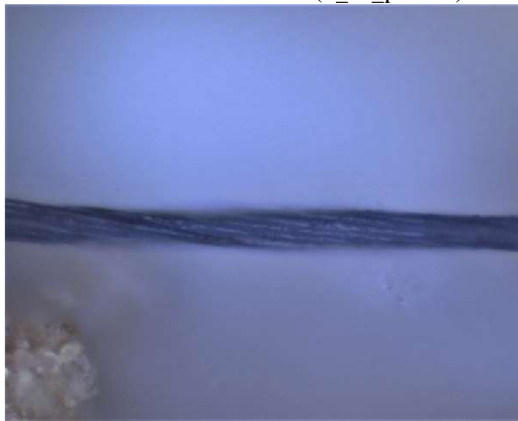
Identifikace MP – **celulóza** (A\_25\_jaro)



Identifikace MP – **celulóza** (S\_50\_podzim)



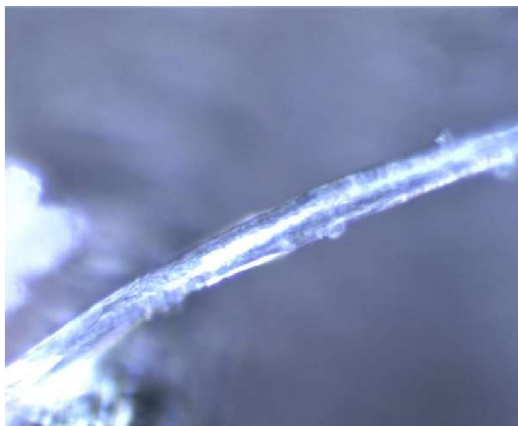
Potvrzený mikroplast (A\_50\_jaro)



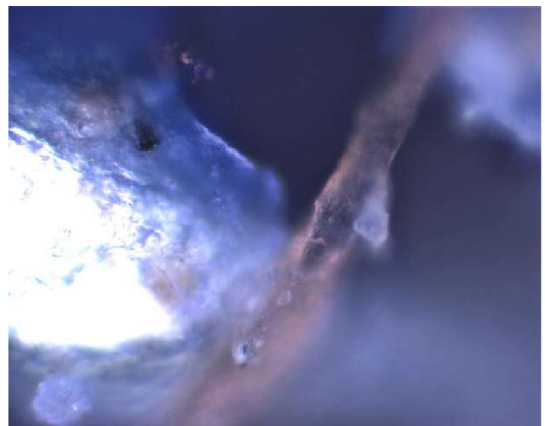
Potvrzený mikroplast (S\_25\_léto)



Potvrzený mikroplast (K\_25\_podzim)



Potvrzený mikroplast (S\_50\_podzim)

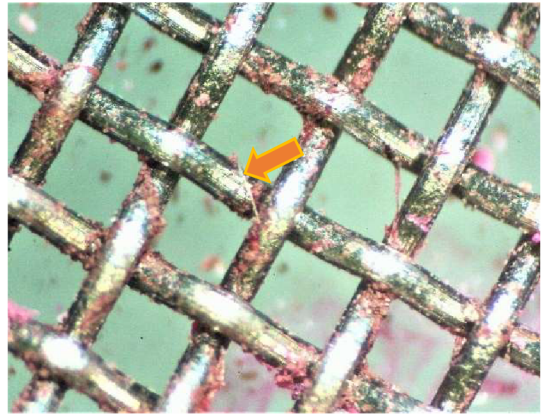


Potvrzený mikroplast (K\_50\_zima)

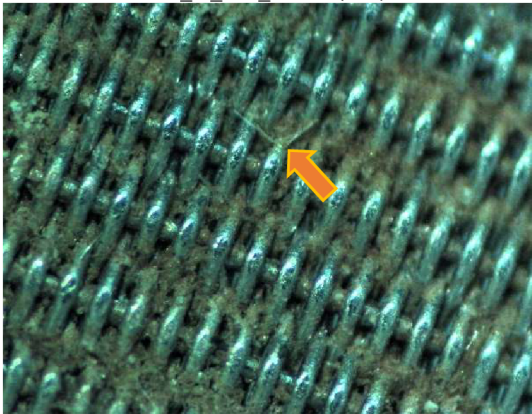
# JIZERA



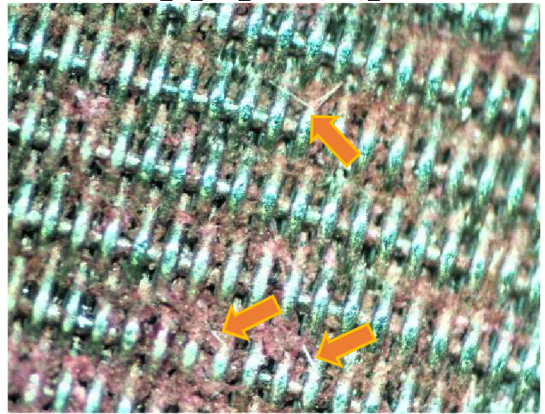
Léto\_K\_500\_2PS2Z(30x)



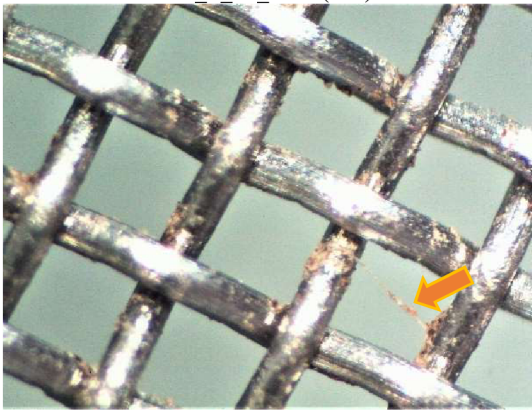
Léto\_K\_500\_2PS2Z(30x)\_BR



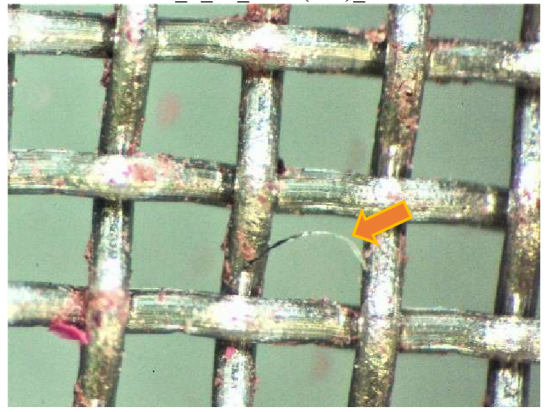
Léto\_S\_50\_3PSS(30x)



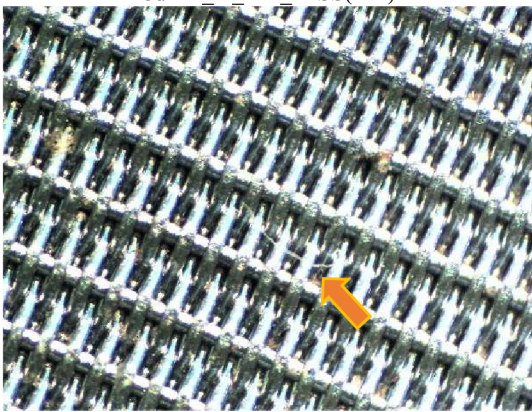
Léto\_S\_50\_3PSS(30x)\_BR



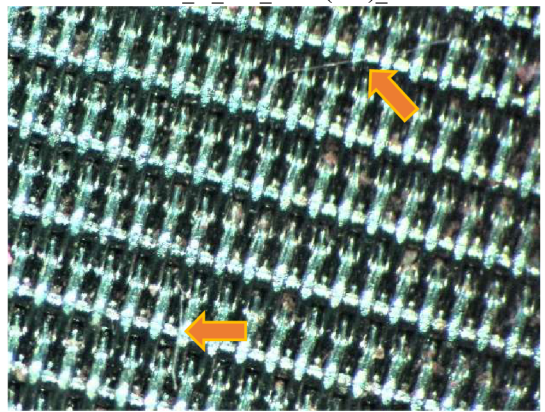
Podzim\_K\_500\_3PSS(30x)



Podzim\_K\_500\_3PSS(30x)\_BR

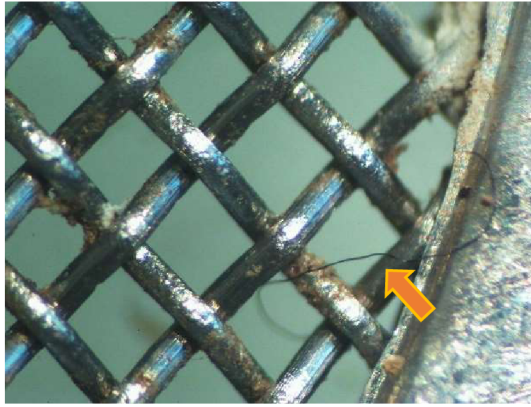


Podzim\_K\_50\_3PSS(30x)

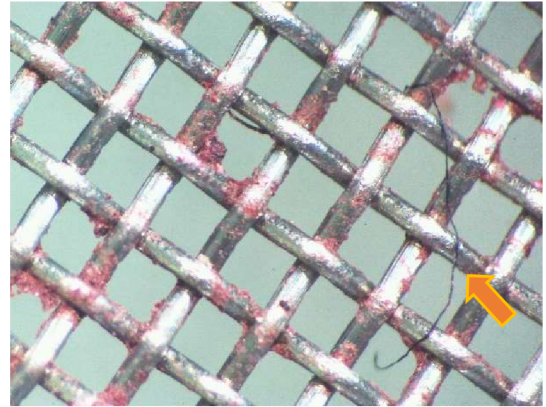


Podzim\_K\_50\_3PSS(30x)\_BR

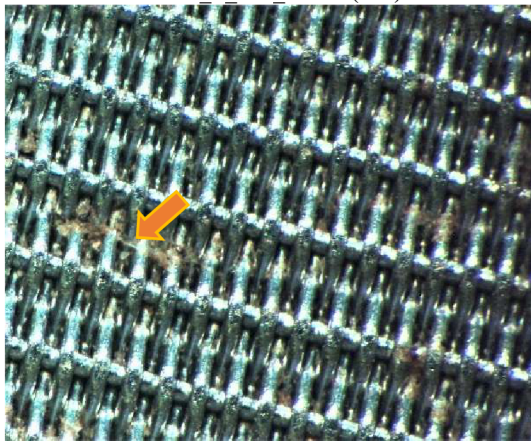




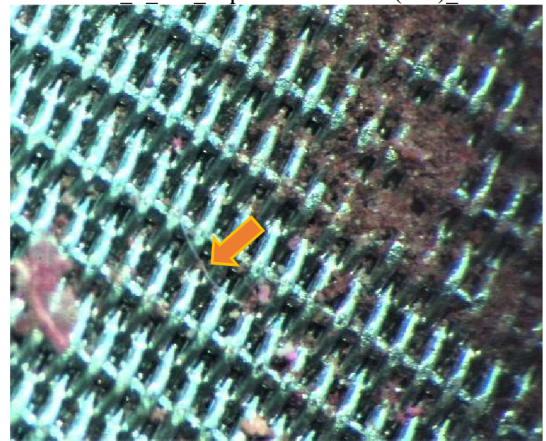
Podzim\_S\_500\_1PS1Z(30x)



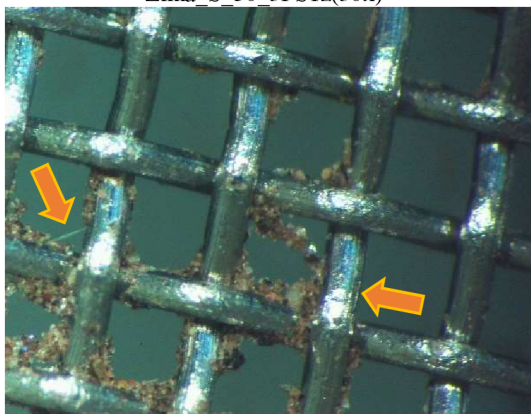
Podzim\_S\_500\_odplaven\_na\_3PS1Z(20x)\_BR



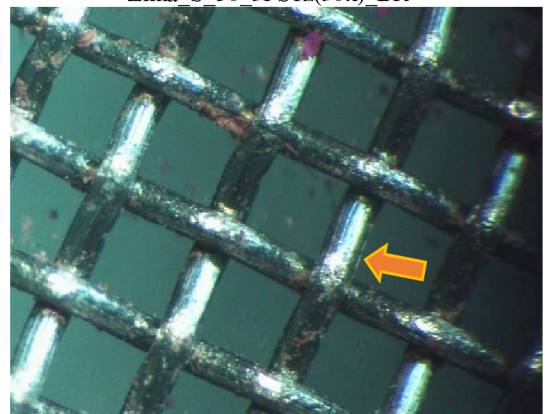
Zima\_S\_50\_3PS1z(30x)



Zima\_S\_50\_3PS1z(30x)\_BR



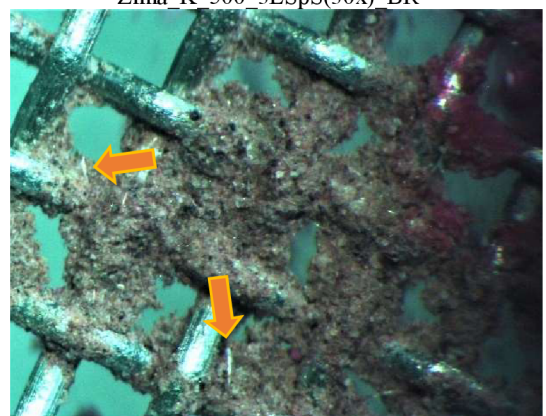
Zima\_K\_500\_3LSpS(30x)



Zima\_K\_500\_3LSpS(30x)\_BR



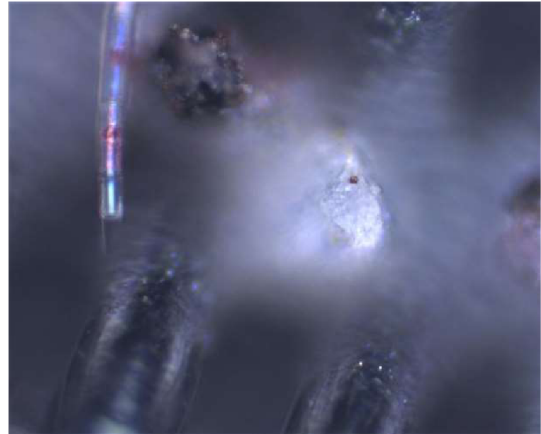
Zima\_K\_500\_3PSVO(30x)



Zima\_K\_500\_3PSVO(30x)\_BR



Identifikace MP – **PE** (A\_50\_jaro)



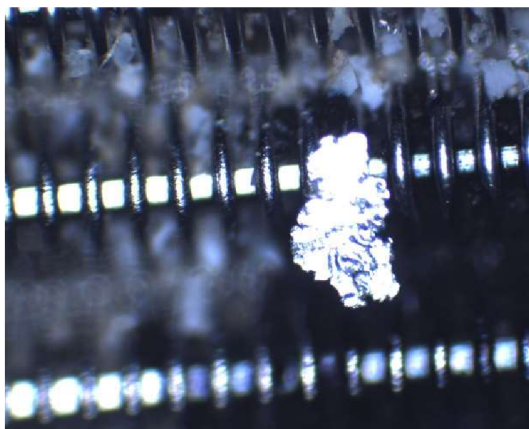
Identifikace MP – **PET** (A\_50\_jaro)



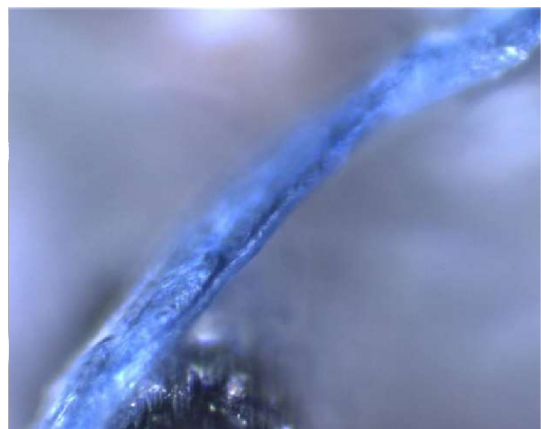
Identifikace MP – **celulóza** (K\_25\_podzim)



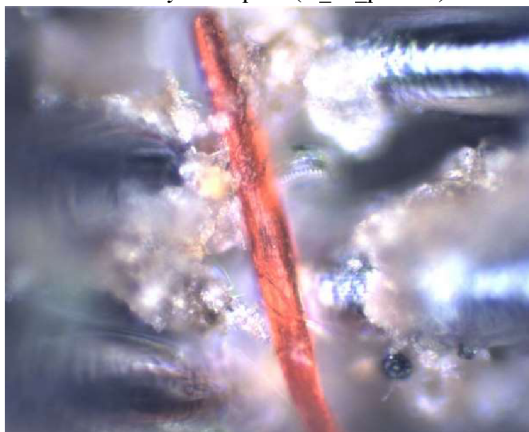
Potvrzený mikroplast (A\_50\_jaro)



Potvrzený mikroplast (K\_25\_podzim)



Potvrzený mikroplast (S\_50\_podzim)



Potvrzený mikroplast (A\_25\_jaro)



Potvrzený mikroplast (K\_50\_léto)