

Symbol Datum odberu TOC TC IC TN

Lucany 1

konec Srpna	3.946	10.583	6.637	0.772
září	4.652	12.543	7.891	0.580
15.10.	5.310	10.360	5.060	0.760
13.11.	7.160	16.020	8.860	2.880
26.12.	7.270	11.250	3.980	1.890
prům	5.668	12.151	6.486	1.376
odchylka	1.336	2.079	1.786	0.884

Nova Ves 2

konec Srpna	5.283	13.925	8.643	1.211
září	6.310	14.670	8.360	0.980
15.10.	7.200	15.450	8.240	1.450
13.11.	7.760	17.700	9.940	2.920
26.12.	6.960	9.500	2.540	1.650
	6.703	14.249	7.545	1.642
	0.849	2.690	2.574	0.677

Tirs. Sad 3

konec Srpna	3.755	8.321	4.566	1.686
září	5.840	15.640	9.800	2.250
15.10.	6.390	11.530	5.140	1.560
13.11.	8.220	24.650	16.430	6.570
26.12.	4.690	6.900	2.200	1.590
	5.779	13.408	7.627	2.731
	1.524	6.374	5.044	1.936

Paseky 4

konec Srpna	3.408	9.209	5.801	1.326
září	4.820	12.650	7.830	1.590
15.10.	4.630	10.390	5.760	1.520
13.11.	5.760	18.800	13.040	5.980
26.12.	4.260	6.600	2.340	1.860
	4.576	11.530	6.954	2.455
	0.765	4.126	3.517	1.771

Prosec 5

konec Srpna	3.758	6.131	2.374	1.395
září	5.18	13.65	8.47	1.54
15.10.	6.05	12.47	6.42	2.34
13.11.	7.23	19.66	12.43	5.32
26.12.	4.22	6.33	2.1	1.71

F- Cl- NO2- NO3- PO43- SO42- pH NH4+ CHSK

0.164	16.31	0.052	2.947	0.000	15.342	7.41	0.0	23.00
0.148	13.32	0.010	2.750	0.110	14.300	6.950	0.1	5.00
0.150	15.260	0.000	2.670	0.000	18.080	6.990	0.0	5.00
0.180	37.740	0.040	10.060	0.000	34.160	7.390	0.0	19.10
0.136	16.52	0	6.93	0.000	18.89	7.040	0.0	18.70
0.156	19.830	0.020	5.072	0.022	20.154	7.156	0.030	14.160
0.015	9.026	0.022	2.967	0.044	7.204	0.201	0.036	7.629

0.253	34.059	0.096	3.833	0.000	16.268	7.91	0.1	24.70
0.192	29.92	0.073	4.060	0.020	16.700	7.720	0.3	11.25
0.230	32.500	0.060	4.430	0.000	22.860	7.060	0.2	6.20
0.260	51.400	0.040	10.350	0.110	41.810	7.510	0.5	14.50
0.166	25.409	0.02	6.42	0.000	18.38	6.820	0.1	17.80
0.220	34.658	0.058	5.819	0.026	23.204	7.404	0.220	14.890
0.036	8.869	0.026	2.444	0.043	9.591	0.407	0.144	6.223

0.181	15.888	0.148	6.212	0.000	53.501	8.76	0.2	19.60
0.21	24.33	0.100	4.920	0.000	27.530	7.440	0.2	3.50
0.190	28.810	0.080	4.530	0.140	27.690	7.040	0.1	6.40
0.300	70.380	0.040	18.560	0.200	86.290	7.640	0.4	16.10
0.14	47.82	0.04	4.86	0.00	11.74	7.020	0.2	11.80
0.205	37.445	0.082	7.816	0.068	41.350	7.580	0.214	11.480
0.052	19.512	0.040	5.402	0.085	26.160	0.636	0.100	5.948

0.212	13.531	0.066	5.218	0.118	11.364	8.83	0.0	18.10
0.21	19.1	0.033	8.130	0.000	16.600	7.380	0.1	0.52
0.210	14.780	0.000	5.730	0.130	15.340	7.120	0.0	4.80
0.280	10.410	0.100	19.560	0.200	34.400	7.680	0.1	4.14
0.20	33.83	0.04	6.07	0.00	9.72	7.070	0.1	9.57
0.222	18.330	0.047	8.942	0.090	17.484	7.616	0.044	7.426
0.029	8.236	0.034	5.400	0.078	8.824	0.645	0.036	6.065

0.138	36.381	0.097	6.476	0.203	16.331	8.08	0.0	25.00
0.195	23.56	0.135	5.67	0	22.83	7.39	0.2	5
0.18	32.09	0.16	8.06	0.19	19.31	7.21	0.11	4.8
24	57.8	0.090	15.230	0.230	32.740	7.630	0.2	8.26
0.155	44.02	0.06	6.12	0.08	11.42	7.12	0.1	10.30

P mg/L

0.025
0.034
0.028
0.023
0.008
0.024
0.009

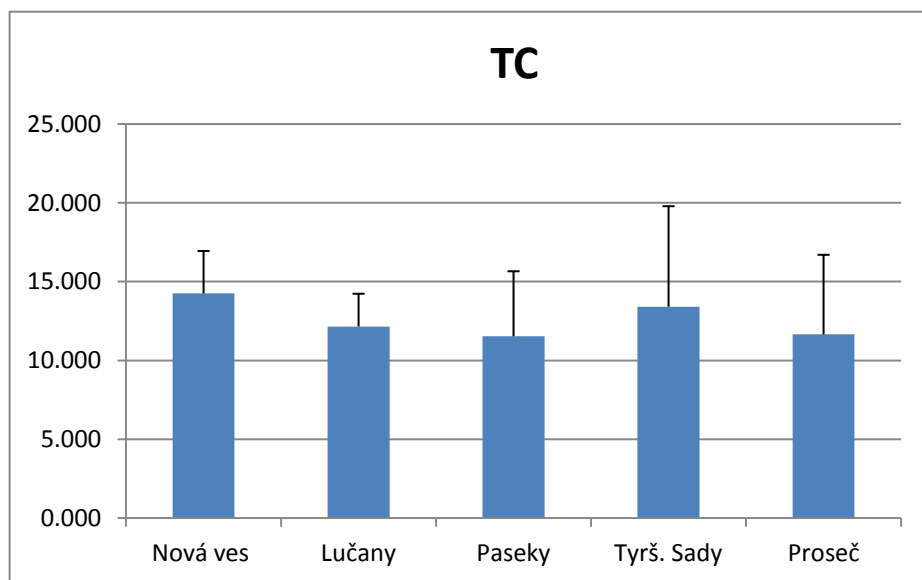
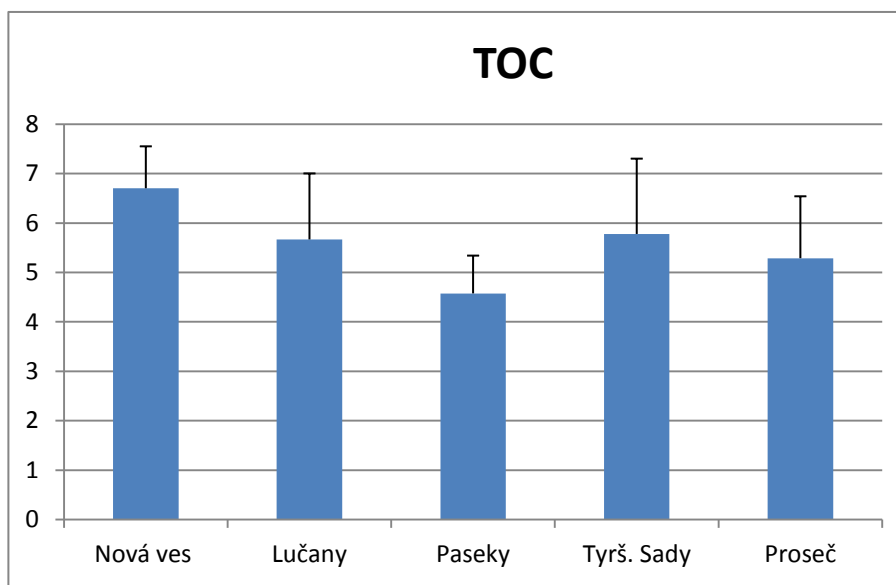
0.025
0.042
0.030
0.029
0.060
0.037
0.013

0.03
0.048
0.034
0.033
0.029
0.035
0.007

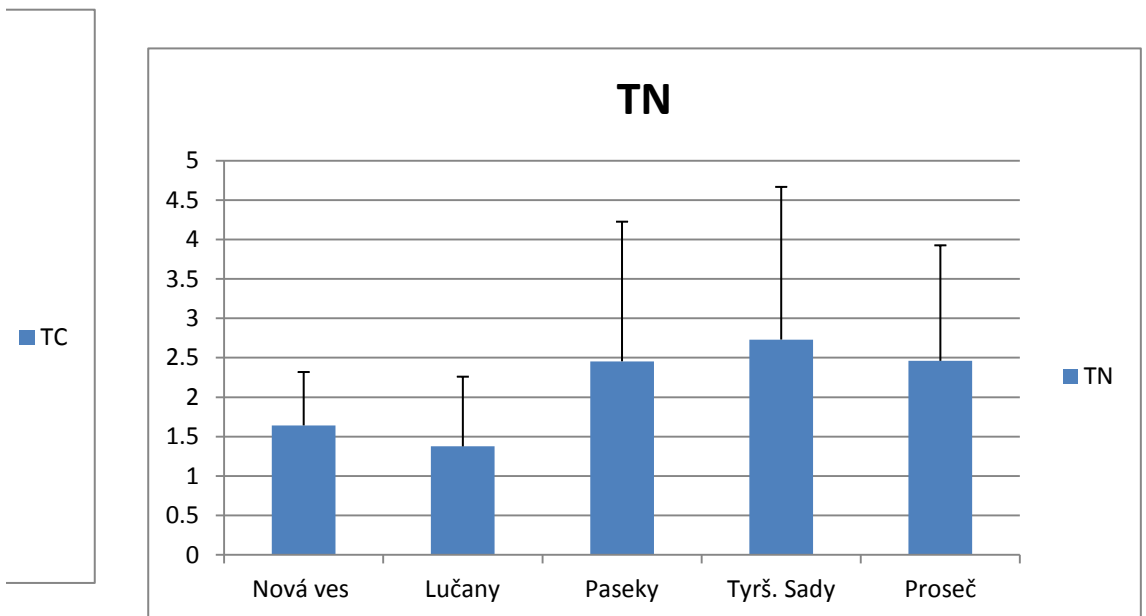
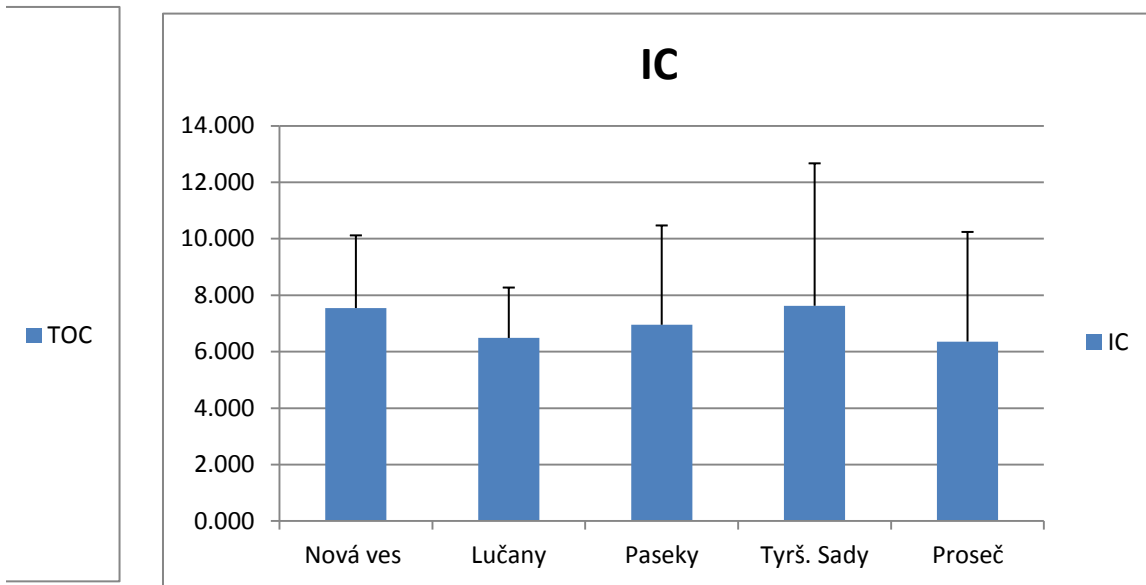
0.031
0.040
0.035
0.025
0.013
0.029
0.009

0.058
0.052
0.037
0.035
0.03

	TOC	sm. Odch.	TC	sm. Odch.
Nová ves	6.703	0.849	14.249	2.690
Lučany	5.668	1.336	12.151	2.079
Paseky	4.576	0.765	11.530	4.126
Tyrš. Sady	5.779	1.524	13.408	6.374
Proseč	5.288	1.253	11.648	5.052
prům. hodnota	5.603		12.597	
kvalita vody	1. tř. kval.			



IC	sm. Odch.	TN	sm. Odch.	F-	sm. Odch.	Cl-	sm. Odch.	NO ₂ ⁻
7.545	2.574	1.642	0.677	0.22	0.036	34.658	8.869	0.058
6.486	1.786	1.376	0.884	0.156	0.015	19.83	9.026	0.020
6.954	3.517	2.455	1.771	0.222	0.029	18.33	8.236	0.047
7.627	5.044	2.731	1.936	0.025	0.052	37.445	19.512	0.082
6.359	3.882	2.461	1.465	4.934	9.533	38.77	11.588	0.107
6.994		2.133		1.1114		29.8066		0.063
mění se		1. tř. kval.		optimální		1. tř. kval.		4. tř. kval.



sm. Odch.	NO ₃ ⁻	sm. Odch.	PO ₄ ³⁻	sm. Odch.	SO ₄ ²⁻	sm. Odch.	pH	sm. Odch.
0.026	5.819	2.444	0.026	0.043	23.204	9.591	7.404	0.407
0.022	5.072	2.967	0.022	0.044	20.154	7.204	7.156	0.201
0.034	8.942	5.400	0.090	0.078	17.484	8.824	7.616	0.645
0.040	7.816	5.402	0.068	0.085	41.35	26.160	7.580	0.636
0.037	8.31	3.552	0.140	0.088	26.526	7.162	7.486	0.344

7.19

0.069

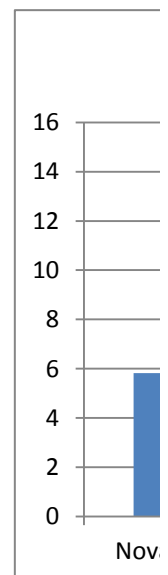
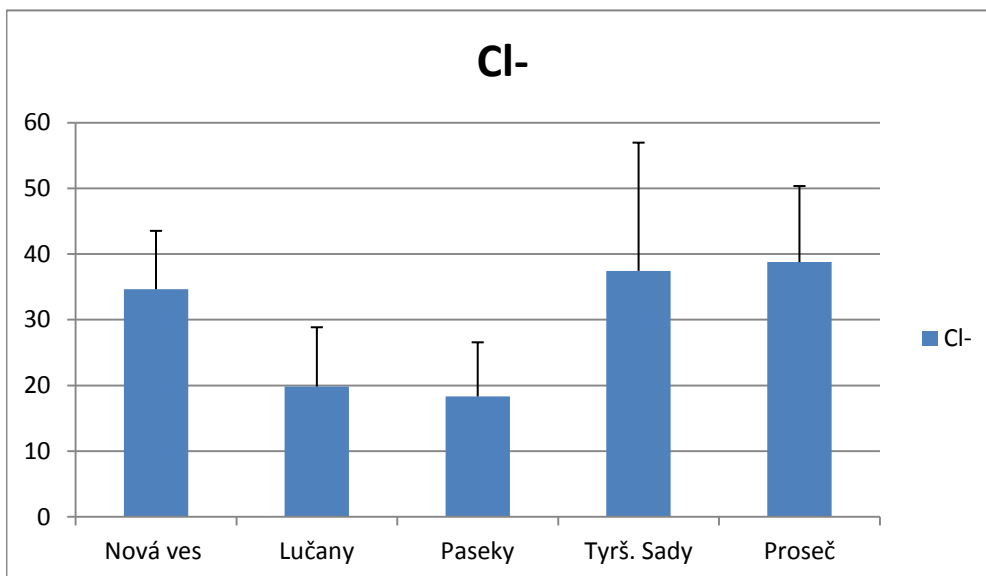
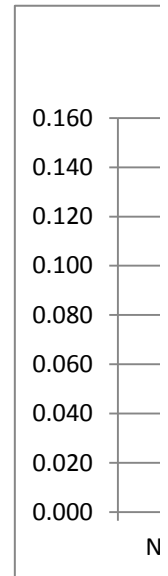
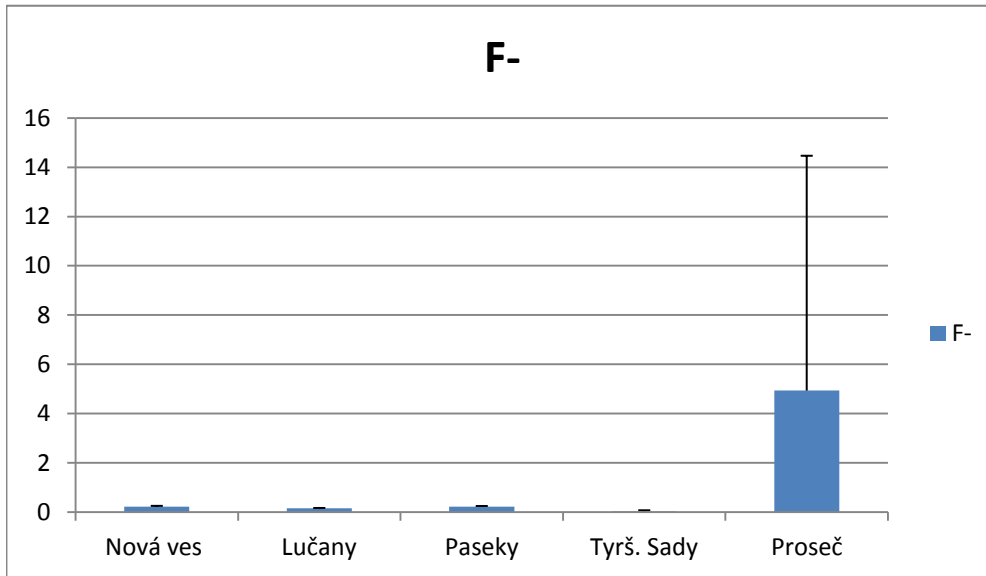
25.74

7.448

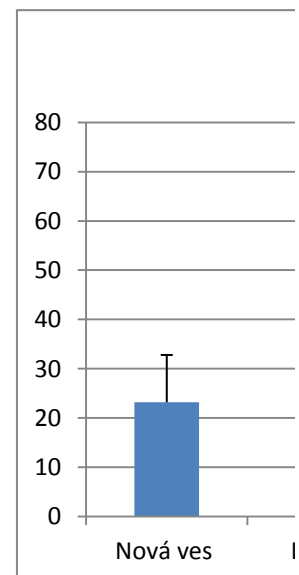
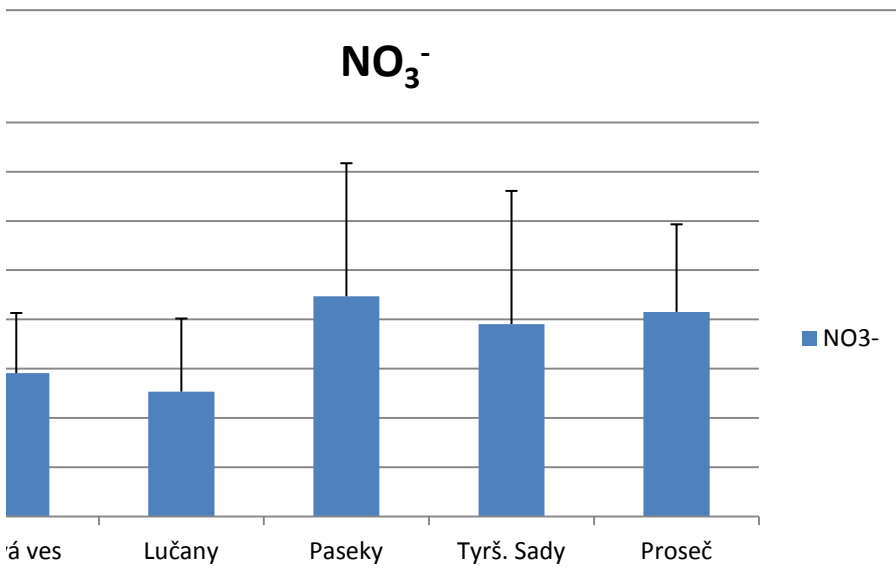
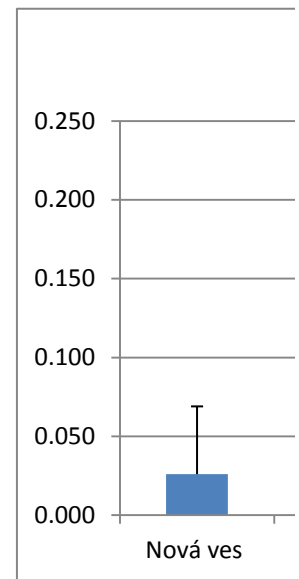
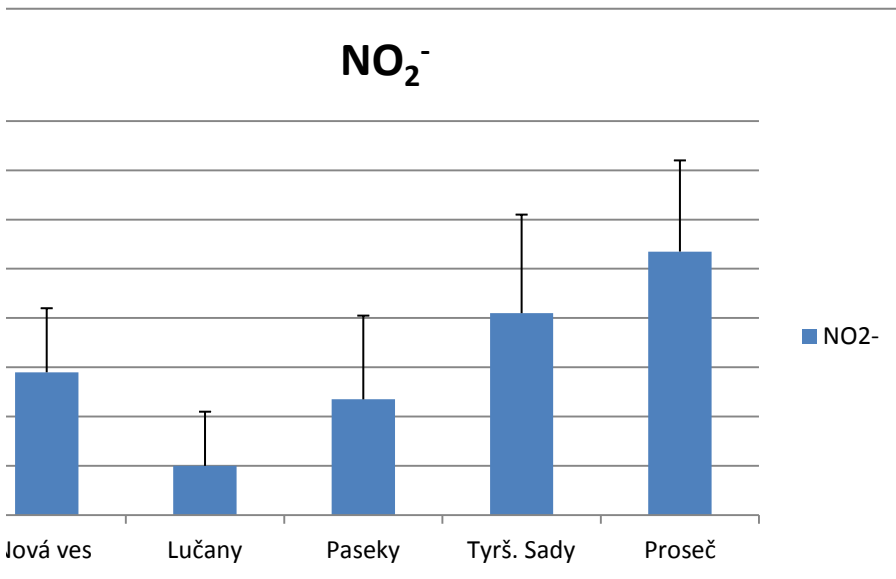
2. tř. kval.

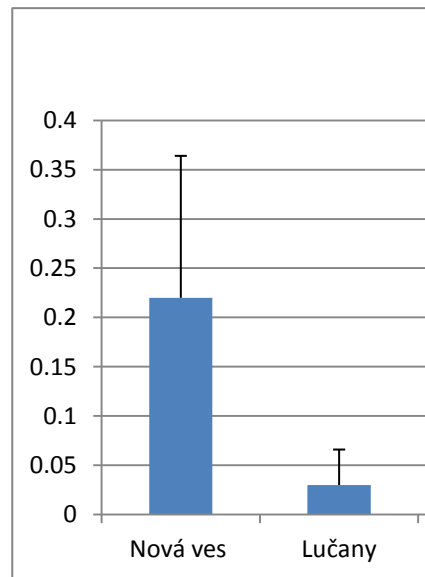
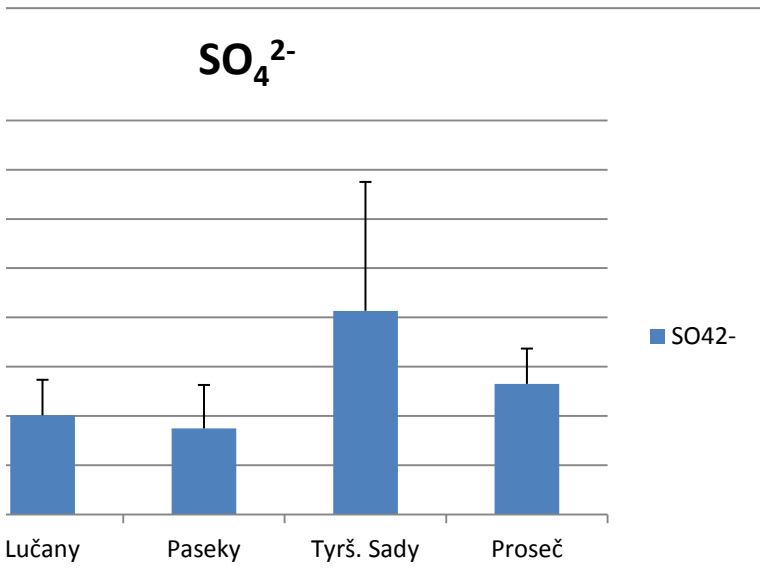
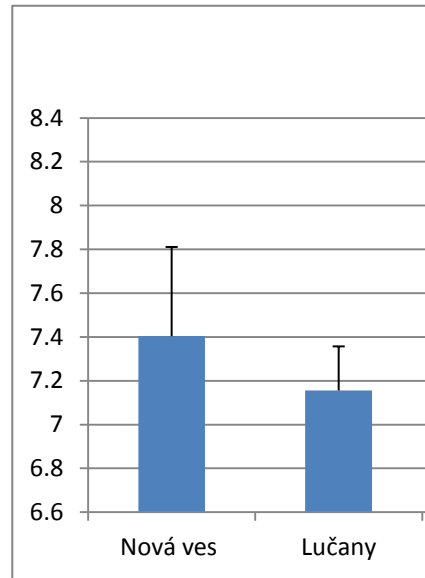
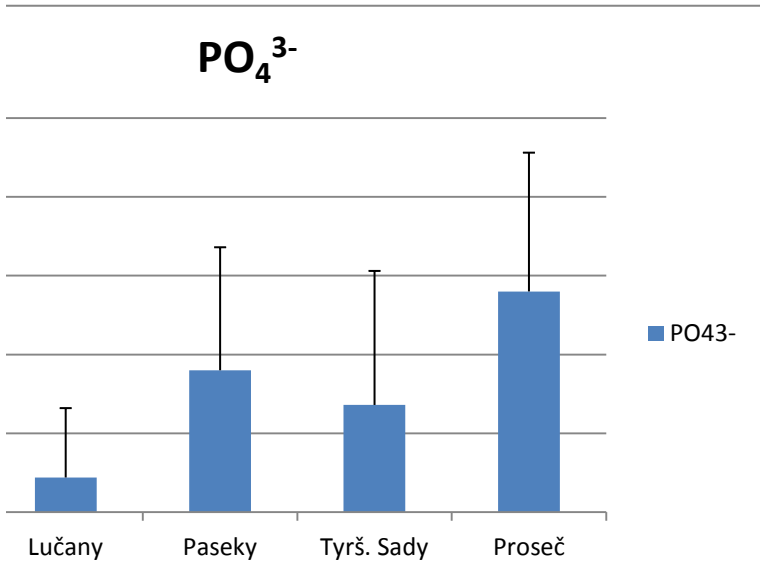
1. tř. kval.

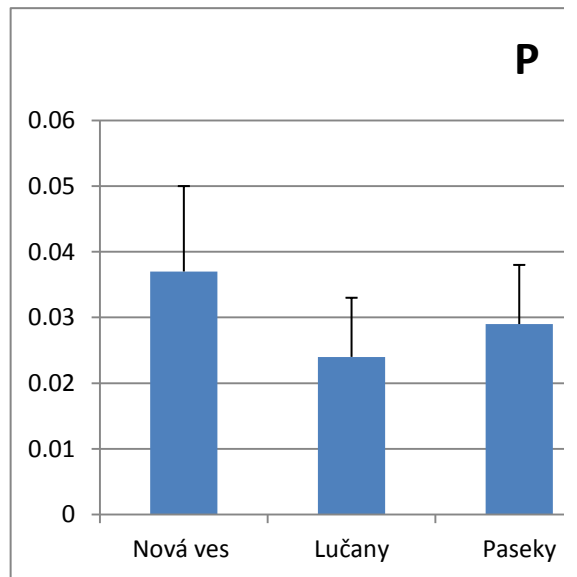
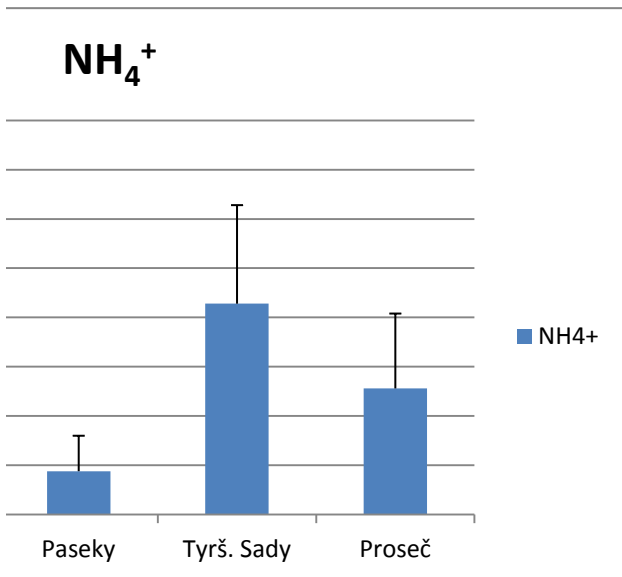
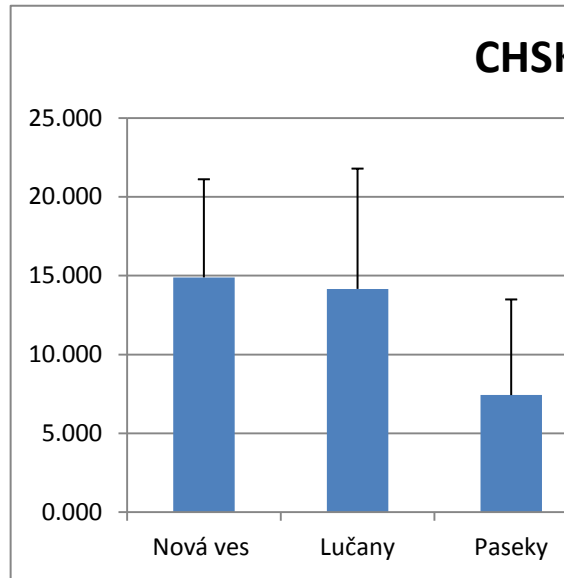
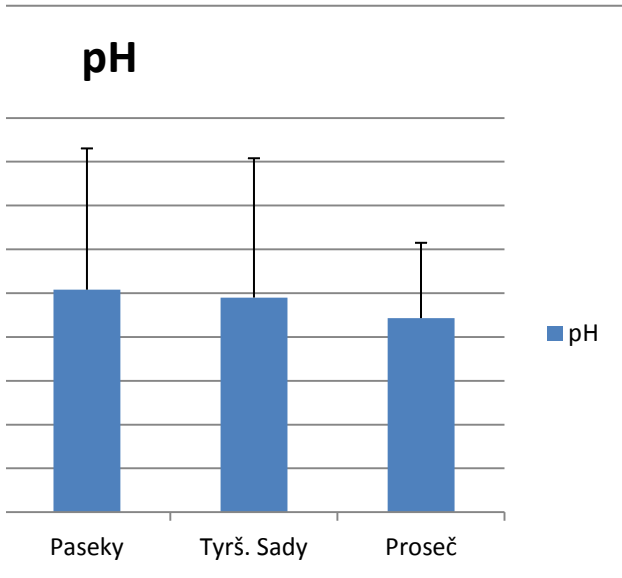
optimální



NH4+	sm. Odch.	CHSK	sm. Odch.	P	sm. Odch.
0.22	0.144	14.890	6.223	0.037	0.013
0.03	0.036	14.16	7.629	0.024	0.009
0.044	0.036	7.426	6.065	0.029	0.009
0.214	0.100	11.48	5.948	0.035	0.007
0.128	0.076	10.672	7.455	0.042	0.011
0.127		11.726		0.033	
1. tř. kval.		1. tř. kval.		1 tř.kval.	







K

