


YEAR	y	exchrate_x	gdp_ger	avgprice_dk	avgprice_cz
2004	31619.000	32.398	2262520.000	1.604	0.386
2005	35279.000	30.361	2288310.000	0.920	0.377
2006	49058.000	29.030	2385080.000	0.824	0.490
2007	44630.000	27.525	2499550.000	0.824	0.446
2008	51274.000	26.364	2546490.000	0.803	0.512
2009	50230.000	26.825	2445730.000	0.582	0.364
2010	40673.000	26.285	2564400.000	0.588	0.357
2011	39078.000	25.088	2693560.000	0.610	0.384
2012	43862.000	25.505	2745310.000	0.650	0.487
2013	46508.000	25.218	2811350.000	0.620	0.533
2014	48418.000	27.481	2927430.000	0.584	0.540
2015	52953.000	27.693	3026180.000	0.647	0.561
2016	55923.000	27.023	3134740.000	0.607	0.575
2017	54100.000	27.021	3267160.000	0.619	0.568
2018	58102.000	25.494	3365450.000	0.623	0.556
2019	65072.000	25.752	3474110.000	0.615	0.613
2020	57071.000	25.411	3403730.000	0.611	0.524
2021	54888.000	26.141	3617450.000	0.601	0.498
2022	53172.000	24.818	3876800.000	0.569	0.487

totcons_ger_x	diff_exchr
94269340.680	0.808
93637629.704	-2.037
94166267.720	-1.331
90763521.940	-1.505
90232622.502	-1.161
89061634.040	0.461
89132298.640	-0.540
88995752.154	-1.197
87498391.245	0.417
87071510.006	-0.287
87507083.925	2.263
84453349.554	0.212
82907742.961	-0.670
80971886.520	-0.002
82067729.040	-1.527
80487400.488	0.258
76995984.912	-0.341
74567247.276	0.730
76533515.874	-1.323

YEAR	y	exchrates_x	gdp_ger	totcons_ger_x	avgprice_dk
2004	31619.000	32.398	2262520.000	94269340.680	1.604
2005	35279.000	30.361	2288310.000	93637629.704	0.920
2006	49058.000	29.030	2385080.000	94166267.720	0.824
2007	44630.000	27.525	2499550.000	90763521.940	0.824
2008	51274.000	26.364	2546490.000	90232622.502	0.803
2009	50230.000	26.825	2445730.000	89061634.040	0.582
2010	40673.000	26.285	2564400.000	89132298.640	0.588
2011	39078.000	25.088	2693560.000	88995752.154	0.610
2012	43862.000	25.505	2745310.000	87498391.245	0.650
2013	46508.000	25.218	2811350.000	87071510.006	0.620
2014	48418.000	27.481	2927430.000	87507083.925	0.584
2015	52953.000	27.693	3026180.000	84453349.554	0.647
2016	55923.000	27.023	3134740.000	82907742.961	0.607
2017	54100.000	27.021	3267160.000	80971886.520	0.619
2018	58102.000	25.494	3365450.000	82067729.040	0.623
2019	65072.000	25.752	3474110.000	80487400.488	0.615
2020	57071.000	25.411	3403730.000	76995984.912	0.611
2021	54888.000	26.141	3617450.000	74567247.276	0.601
2022	53172.000	24.818	3876800.000	76533515.874	0.569

 gret! model 1

File Edit Tests Save Graphs Analysis LaTeX

Model 1: OLS, using observations 2004-2022 (T = 19)
 Dependent variable: y

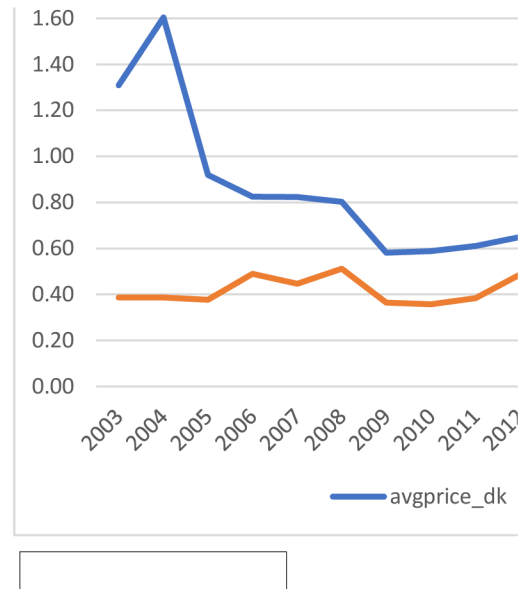
	coefficient	std. error	t-ratio
const	13677.3	10498.2	1.303
gdp_ger	0.00492869	0.00303073	1.626
avgprice_dk	-9035.66	5062.11	-1.785
avgprice_cz	56044.4	16839.2	3.328
diff_exchr	-357.843	972.476	-0.3680

Mean dependent var	49047.89	S.D. dependent var	8382.0
Sum squared resid	2.57e+08	S.E. of regression	4288.0
R-squared	0.796410	Adjusted R-squared	0.730
F(4, 14)	13.69146	P-value (F)	0.000
Log-likelihood	-182.9695	Akaike criterion	375.9
Schwarz criterion	380.6612	Hannan-Quinn	376.7
rho	0.447654	Durbin-Watson	1.100

Excluding the constant, p-value was highest for variable 'avgprice_dk'

	avgprice_dk	avgprice_cz
2003	1.31	0.39
2004	1.604	0.386
2005	0.920	0.377
2006	0.824	0.490
2007	0.824	0.446

2008	0.803	0.512
2009	0.582	0.364
2010	0.588	0.357
2011	0.610	0.384
2012	0.650	0.487
2013	0.620	0.533
2014	0.584	0.540
2015	0.647	0.561
2016	0.607	0.575
2017	0.619	0.568
2018	0.623	0.556
2019	0.615	0.613
2020	0.611	0.524
2021	0.601	0.498
2022	0.569	0.487



per liter /kg
EUR

avgprice_cz	diff_exchr
0.386	0.808
0.377	-2.037
0.490	-1.331
0.446	-1.505
0.512	-1.161
0.364	0.461
0.357	-0.540
0.384	-1.197
0.487	0.417
0.533	-0.287
0.540	2.263
0.561	0.212
0.575	-0.670
0.568	-0.002
0.556	-1.527
0.613	0.258
0.524	-0.341
0.498	0.730
0.487	-1.323

Correlation Coefficients, using the observati
Two-tailed critical values for n = 19: 5% 0.4

exchrte_x	gdp_ger	totcons_ge
1.0000	-0.6104	0.6
	1.0000	-0.9
		1.0

avgprice_cz	exchrte_x	gdp_ger	totcons_ge	avgprice_dk	avgprice_cz
-0.3470	1.0000				
0.6450		1.0000			
-0.5703			1.0000		
-0.3732				1.0000	
1.0000					1.0000

Correlation Coefficients, using the observati
Two-tailed critical values for n = 19: 5% 0.4

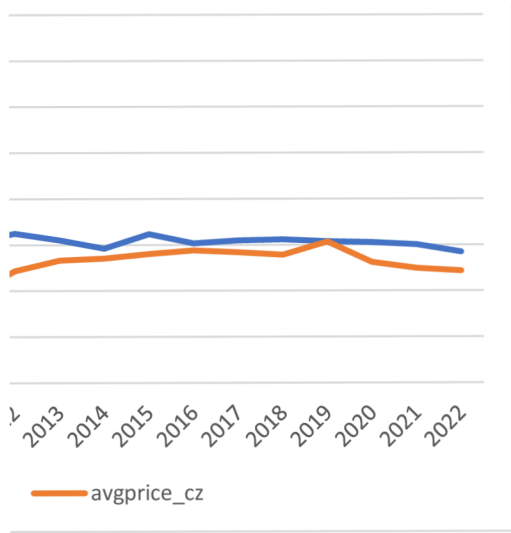
gdp_ger	avgprice_dk	avgprice_cz
1.0000	-0.5433	0.4
	1.0000	-0.3
		1.0

— □ ×



p-value
0.2137
0.1262
0.0959 *
0.0050 ***
0.7184
.433
.644
8242
0095
9390
7382
2626
7 (diff_exchr)

mby lagged exch rate



ions 2004 - 2022
4555, 1% 0.5751

er_x	avgprice_dk	
5250	0.8435	exchrte_x
9676	-0.5433	gdp_ger
0000	0.5651	totcons_ger_x
	1.0000	avgprice_dk

ions 2004 - 2022
4555, 1% 0.5751

e_cz	diff_exchr	
6450	0.1212	gdp_ger
3732	0.0031	avgprice_dk
0000	0.1948	avgprice_cz
	1.0000	diff_exchr

YEAR	y_EX	infl_cz	infl_ger	exch	gdp_ger	price_dk
2004	31619	2.8	1.67	32.398	2262520	1.604003345
2005	35279	1.9	1.55	30.361	2288310	0.919650462
2006	49058	2.5	1.58	29.03	2385080	0.824323613
2007	44630	2.8	2.3	27.525	2499550	0.823714108
2008	51274	6.3	2.63	26.364	2546490	0.8031676
2009	50230	1	0.31	26.825	2445730	0.581796686
2010	40673	1.5	1.1	26.285	2564400	0.587822095
2011	39078	1.9	2.08	25.088	2693560	0.610498559
2012	43862	3.3	2.01	25.505	2745310	0.649587885
2013	46508	1.4	1.5	25.218	2811350	0.620145141
2014	48418	0.4	0.91	27.481	2927430	0.583885341
2015	52953	0.3	0.51	27.693	3026180	0.646901982
2016	55923	0.7	0.49	27.023	3134740	0.607073556
2017	54100	2.5	1.51	27.021	3267160	0.618702733
2018	58102	2.1	1.73	25.494	3365450	0.622753825
2019	65072	2.8	1.45	25.752	3474110	0.615254999
2020	57071	3.2	0.14	25.411	3403730	0.610612208
2021	54888	3.8	3.07	26.141	3617450	0.601273993
2022	53172	15.1	6.86	24.818	3876800	0.569

diff_exch

0.808 gretl: correlation matrix - □
-2.037

-1.331
-1.505 Correlation Coefficients, using the observations 2004 - 2022
Two-tailed critical values for n = 19: 5% 0.4555, 1% 0.5751
-1.161
0.461 infl_ger gdp_ger price_dk diff_exch
-0.54 1.0000 0.3861 -0.0141 -0.2995 infl_ger
-1.197 1.0000 -0.5433 0.1212 gdp_ger
0.417 1.0000 0.0031 price_dk
-0.287 1.0000 diff_exch
2.263

gretl: model 1 - □

0.212 File Edit Tests Save Graphs Analysis LaTeX
-0.67
-0.002 Model 1: OLS, using observations 2004-2022 (T = 19)
Dependent variable: y_EX
-1.527
0.258 coefficient std. error t-ratio p-value

-0.341 const 15176.7 12730.8 1.192 0.2530
0.73 infl_ger -2018.90 1005.77 -2.007 0.0644 *
-1.323 gdp_ger 0.0142017 0.00349072 4.068 0.0012 ***
price_dk -5988.54 6267.21 -0.9555 0.3555
diff_exch -882.298 1244.20 -0.7091 0.4899

Mean dependent var 49047.89 S.D. dependent var 8382.433
Sum squared resid 3.58e+08 S.E. of regression 5057.881
R-squared 0.716827 Adjusted R-squared 0.635920
F(4, 14) 8.859914 P-value(F) 0.000879
Log-likelihood -186.1041 Akaike criterion 382.2081
Schwarz criterion 386.9303 Hannan-Quinn 383.0073
rho 0.219631 Durbin-Watson 1.548100

Excluding the constant, p-value was highest for variable 7 (diff_exch)

×



r
k
ch


×



r

ch)

YEAR	y	exchr_x	beercons_ger_x	avgprice_dk	avgprice_cz
2004	31619.000	32.398	94269340.680	1.604	0.386
2005	35279.000	30.361	93637629.704	0.920	0.377
2006	49058.000	29.030	94166267.720	0.824	0.490
2007	44630.000	27.525	90763521.940	0.824	0.446
2008	51274.000	26.364	90232622.502	0.803	0.512
2009	50230.000	26.825	89061634.040	0.582	0.364
2010	40673.000	26.285	89132298.640	0.588	0.357
2011	39078.000	25.088	88995752.154	0.610	0.384
2012	43862.000	25.505	87498391.245	0.650	0.487
2013	46508.000	25.218	87071510.006	0.620	0.533
2014	48418.000	27.481	87507083.925	0.584	0.540
2015	52953.000	27.693	84453349.554	0.647	0.561
2016	55923.000	27.023	82907742.961	0.607	0.575
2017	54100.000	27.021	80971886.520	0.619	0.568
2018	58102.000	25.494	82067729.040	0.623	0.556
2019	65072.000	25.752	80487400.488	0.615	0.613
2020	57071.000	25.411	76995984.912	0.611	0.524
2021	54888.000	26.141	74567247.276	0.601	0.498
2022	53172.000	24.818	76533515.874	0.569	0.487

 gretl: model 1

File Edit Tests Save Graphs Analysis LaTeX

Model 1: OLS, using observations 2004-2022 (T = 19)
Dependent variable: y

	coefficient	std. error	t-ratio
const	12440.3	12237.0	1.01
avgprice_dk	-7746.35	6050.02	-1.28
avgprice_cz	53002.1	19737.4	2.68
inf_cz	1.75870	487.656	0.00
gdp_ger	0.00572631	0.00434116	1.31
diff_exchr	-483.262	1141.18	-0.42
dummy_inf_ger	-1352.78	2627.83	-0.51

Mean dependent var	49047.89	S.D. dependent var	8
Sum squared resid	2.51e+08	S.E. of regression	4
R-squared	0.801265	Adjusted R-squared	0
F(6, 12)	8.063643	P-value (F)	0
Log-likelihood	-182.7402	Akaike criterion	3
Schwarz criterion	386.0916	Hannan-Quinn	3
rho	0.432543	Durbin-Watson	1

Excluding the constant, p-value was highest for variab

inf_cz	inf_ger_x	gdp_ger	diff_exchr	dummy_inf_ger
2.800	1.670	2262520.000	0.808	1
1.900	1.550	2288310.000	-2.037	0
2.500	1.580	2385080.000	-1.331	0
2.800	2.300	2499550.000	-1.505	1
6.300	2.630	2546490.000	-1.161	1
1.000	0.310	2445730.000	0.461	0
1.500	1.100	2564400.000	-0.540	0
1.900	2.080	2693560.000	-1.197	1
3.300	2.010	2745310.000	0.417	1
1.400	1.500	2811350.000	-0.287	0
0.400	0.910	2927430.000	2.263	0
0.300	0.510	3026180.000	0.212	0
0.700	0.490	3134740.000	-0.670	0
2.500	1.510	3267160.000	-0.002	0
2.100	1.730	3365450.000	-1.527	1
2.800	1.450	3474110.000	0.258	0
3.200	0.140	3403730.000	-0.341	0
3.800	3.070	3617450.000	0.730	1
15.100	6.860	3876800.000	-1.323	1

Correlation Coefficients, using the Two-tailed critical values for n =

avgprice_dk	avgprice_cz
1.0000	-0.3732
	1.0000

gdp_ger	diff_exchr
-0.5433	0.0031
0.6450	0.1948
0.4440	-0.2945
0.3861	-0.2995
1.0000	0.1212
	1.0000

gret: correlation matrix



Correlation Coefficients, using the Two-tailed critical values for n =

avgprice_dk	avgprice_cz
1.0000	-0.3732
	1.0000

diff_exchr	dummy_inf_ger
0.0031	0.2749
0.1948	-0.1962
-0.2945	0.4852
0.1212	0.0699
1.0000	-0.1963
	1.0000

— □ ×



atio p-value

17	0.3294	
80	0.2246	
85	0.0198	**
03606	0.9972	
19	0.2118	
235	0.6794	
148	0.6160	

8382.433
4576.707
0.701897
0.001188
379.4805
380.5993
1.132312

ble 6 (inf_cz)

e observations 2004 - 2022
19: 5% 0.4555, 1% 0.5751

inf_cz	inf_ger
-0.0316	-0.0141 avgprice_dk
0.0128	-0.0514 avgprice_cz
1.0000	0.9174 inf_cz
	1.0000 inf_ger

vgprice_dk
vgprice_cz
nf_cz
nf_ger
dp_ger
iff_exchr

- □ ×



: observations 2004 - 2022
19: 5% 0.4555, 1% 0.5751

inf_cz	gdp_ger
-0.0316	-0.5433 avgprice_dk
0.0128	0.6450 avgprice_cz
1.0000	0.4440 inf_cz
	1.0000 gdp_ger

vgprice_dk
vgprice_cz
nf_cz
lp_ger
.ff_exchr
ummy_inf_ger

YEAR	CZexportoGR	CZforExchRate	GDP CZ mil CZK	GRtotBeerCons
2003	27978	31.590	2823452	95826542.180
2004	31619	32.398	3079207	94269340.680
2005	35279	30.361	3285601	93637629.704
2006	49058	29.030	3530881	94166267.720
2007	44630	27.525	3859533	90763521.940
2008	51274	26.364	4042860	90232622.502
2009	50230	26.825	3954320	89061634.040
2010	40673	26.285	3992870	89132298.640
2011	39078	25.088	4062323	88995752.154
2012	43862	25.505	4088912	87498391.245
2013	46508	25.218	4142811	87071510.006
2014	48418	27.481	4345766	87507083.925
2015	52953	27.693	4625378	84453349.554
2016	55923	27.023	4796873	82907742.961
2017	54100	27.021	5110743	80971886.520
2018	58102	25.494	5410761	82067729.040
2019	65072	25.752	5791498	80487400.488
2020	57071	25.411	5709131	76995984.912
2021	54888	26.141	6108717	74567247.276
2022	53172	24.818	6785852	76533515.874

EUR (thous)

EUR/CZK

EUR

total, hl

GDP CZ : <https://www.czso.cz/csu/czso/vyvoj-hrubeho-domaciho-produktu-v-cr-ve-stalych-inflaceCZ>: <https://www.czso.cz/csu/czso/prumerna-rocni-mira-inflace-v-letech-1998-2022>

DKK

	beer vol exp to GR	correction	avg price
2003	78576	78576000	1.308795243
2004	77718	77718000	1.604003345
2005	128541	128541000	0.919650462
2006	147176	147176000	0.824323613
2007	120269	120269000	0.823714108
2008	144338	144338000	0.8031676
2009	184395	184395000	0.581796686
2010	195554	195554000	0.587822095
2011	197822	197822000	0.610498559
2012	204130	204130000	0.649587885
2013	219029	219029000	0.620145141
2014	237941	237941000	0.583885341
2015	198279	198279000	0.646901982
2016	208045	208045000	0.607073556
2017	197311	197311000	0.618702733
2018	177402	177402000	0.622753825
2019	172620	172620000	0.615254999

2020	128953	128953000	0.610612208
2021	130467	130467000	0.601273993
2022	133940	133940000	0.568801687

https://www.trademap.org/Bilateral_TS.aspx?nvpm=1%7c276%7c%7c208%7c%7c2203%7c
<https://www.statbank.dk/KN8Y>

<https://freecurrencyrates.com/en/exchange-rate-history/DKK-EUR/2004/cbr>

29.653	29.374	29.393	29.157
--------	--------	--------	--------

28.209

CompetitorPRice	AVGpriceCZbeertoGR	consum beer per ca
1.309	0.351	117.8
1.604	0.386	116
0.920	0.377	115.3
0.824	0.490	116
0.824	0.446	111.8
0.803	0.512	111.1
0.582	0.364	109.6
0.588	0.357	109.6
0.610	0.384	109.3
0.650	0.487	107.3
0.620	0.533	106.6
0.584	0.540	106.9
0.647	0.561	102.9
0.607	0.575	100.7
0.619	0.568	98
0.623	0.556	99
0.615	0.613	96.8
0.611	0.524	92.4
0.601	0.498	89.4
0.569	0.487	91.8

<https://www.statist>

avg exp price per liter / Kg

-cenach GDP GER: <https://de.statista.com/statistik/daten/studie/1251/umfrage>
inflace GR: <https://www.macrotrends.net/countries/DEU/germany/infl>

CompetitorPRice%	
41.5	2003
34.9	2004
42.6	2005
41.4	2006
38.2	2007
40.7	2008
46.3	2009
37.4	2010
38	2011
37.4	2012
39.1	2013
40	2014
35.7	2015
35.3	2016
34.8	2017
31.2	2018
31.2	2019

31.2	2020
31.2	2021
31.2	2022

c%7c%7c4%7c1%7c1%7c1%7c2%7c1%7c1%7c1%7c1%7c1

27.095	26.936	28.035	28.999	28.849
--------	--------	--------	--------	--------

population	consum of beer i	conum of beer in HL
81346810	9582654218	95826542.18
81266673	9426934068	94269340.68
81212168	9363762970	93637629.7
81177817	9416626772	94166267.72
81183830	9076352194	90763521.94
81217482	9023262250	90232622.5
81260615	8906163404	89061634.04
81325090	8913229864	89132298.64
81423378	8899575215	88995752.15
81545565	8749839125	87498391.25
81680591	8707151001	87071510.01
81858825	8750708393	87507083.93
82073226	8445334955	84453349.55
82331423	8290774296	82907742.96
82624374	8097188652	80971886.52
82896696	8206772904	82067729.04
83148141	8048740049	80487400.49
83328988	7699598491	76995984.91
83408554	7456724728	74567247.28
83369843	7653351587	76533515.87

<https://www.macrotrends.net/countries/DEU/germany/population>

/entwicklung-des-bruttoinlandsprodukts-seit-dem-jahr-1991/
ation-rate-cpi

Competitor	PRiceUSD	%	Exch DKK/EUR	DKK volum
	85.1	41.5	0.135	2003 761777
	92.9	34.9	0.134	2004 930298
	154	42.6	0.134	2005 882185
	177	41.4	0.134	2006 905378
	159	38.2	0.134	2007 739308
	206	40.7	0.135	2008 858723
	246	46.3	0.134	2009 800600
	184	37.4	0.134	2010 857843
	199	38	0.134	2011 901269
	197	37.4	0.135	2012 982225
	213	39.1	0.134	2013 1013655
	223	40	0.134	2014 1036793
	165	35.7	0.134	2015 957217
	166	35.3	0.134	2016 942527
	162	34.8	0.135	2017 904273
	154	31.2	0.134	2018 824461
	140	27.4	0.134	2019 792577

106	24.9	0.134	2020	587614
110	25.4	0.134	2021	585421
		0.134	2022	568547

total MIL

27.354	27.343	26.32
--------	--------	-------

Netto kg= L	stat hodnota EUR tis	hodnot EUR
79771014	27978	27978000
81814813	31619	31619000
93577154	35279	35279000
100099779	49058	49058000
100099779	44630	44630000
100099779	51274	51274000
138021044	50230	50230000
113816973	40673	40673000
101885177	39078	39078000
90105715	43862	43862000
87336950	46508	46508000
89596007	48418	48418000
94366880	52953	52953000
97237980	55923	55923000
95325125	54100	54100000
104520843	58102	58102000
106138639	65072	65072000
108822096	57071	57071000
110255068	54888	54888000
109104757	53172	53172000

avg dummy

100099778.6

100099779

DKK * 1000

COMP PRICE FINA COMP PRICE DKK CURRENCY VOLUME

761777000	630370370.4	630.3704	102839895.00
930298000	693283582.1	693.2836	124659932.00
882185000	1149253731	1149.254	118212790.00
905378000	1320895522	1320.896	121320652.00
739308000	1186567164	1186.567	99067272.00
858723000	1525925926	1525.926	115927605.00
800600000	1835820896	1835.821	107280400.00
857843000	1373134328	1373.134	114950962.00
901269000	1485074627	1485.075	120770046.00
982225000	1459259259	1459.259	132600375.00
1013655000	1589552239	1589.552	135829770.00
1036793000	1664179104	1664.179	138930262.00
957217000	1231343284	1231.343	128267078.00
942527000	1238805970	1238.806	126298618.00
904273000	1200000000	1200	122076855.00
824461000	1149253731	1149.254	110477774.00
792577000	1044776119	1044.776	106205318.00

587614000	791044776.1	791.0448	78740276.00
585421000	820895522.4	820.8955	78446414.00
568547000	123000000	123	76185298.00
TOTAL MIL			AVG

2022 dummy (dont need)

114889594.42

year	GER in bil USD	CZ in bil USD
2003	2501.64	100.09
2004	2814.35	119.81
2005	2846.86	137.14
2006	2994.7	156.26
2007	3425.58	190.18
2008	3745.26	236.82
2009	3411.26	207.43
2010	3399.67	209.07
2011	3749.31	229.56
2012	3527.14	208.86
2013	3733.8	211.69
2014	3889.09	209.36
2015	3357.59	188.03
2016	3469.85	196.27
2017	3690.85	218.63
2018	3974.44	249
2019	3888.23	252.55
2020	3889.67	245.97
2021	4259.93	281.79
2022	4072.19	290.92

YEAR	y_EX	infl_cz	infl_ger	exch	gdp_ger	price_dk	diff_exch
2003	27978	0.1	1.03	31.59	2211570	1.308795	
2004	31619	2.8	1.67	32.398	2262520	1.604003	0.808
2005	35279	1.9	1.55	30.361	2288310	0.91965	-2.037
2006	49058	2.5	1.58	29.03	2385080	0.824324	-1.331
2007	44630	2.8	2.3	27.525	2499550	0.823714	-1.505
2008	51274	6.3	2.63	26.364	2546490	0.803168	-1.161
2009	50230	1	0.31	26.825	2445730	0.581797	0.461
2010	40673	1.5	1.1	26.285	2564400	0.587822	-0.54
2011	39078	1.9	2.08	25.088	2693560	0.610499	-1.197
2012	43862	3.3	2.01	25.505	2745310	0.649588	0.417
2013	46508	1.4	1.5	25.218	2811350	0.620145	-0.287
2014	48418	0.4	0.91	27.481	2927430	0.583885	2.263
2015	52953	0.3	0.51	27.693	3026180	0.646902	0.212
2016	55923	0.7	0.49	27.023	3134740	0.607074	-0.67
2017	54100	2.5	1.51	27.021	3267160	0.618703	-0.002
2018	58102	2.1	1.73	25.494	3365450	0.622754	-1.527
2019	65072	2.8	1.45	25.752	3474110	0.615255	0.258
2020	57071	3.2	0.14	25.411	3403730	0.610612	-0.341
2021	54888	3.8	3.07	26.141	3617450	0.601274	0.73
2022	53172	15.1	6.86	24.818	3876800	0.569	-1.323

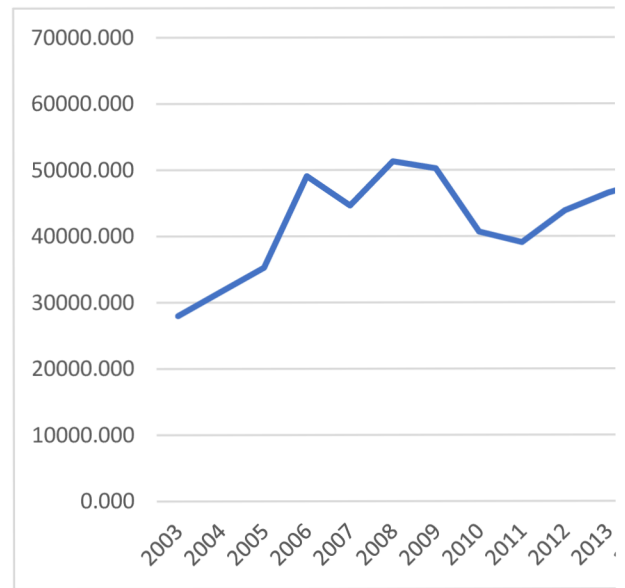
YEAR	y	exchrates	gdp_ger	totcons_ger	avgprice_dk
2003	27978.000	31.590	2211570.000	95826542.180	1.309
2004	31619.000	32.398	2262520.000	94269340.680	1.604
2005	35279.000	30.361	2288310.000	93637629.704	0.920
2006	49058.000	29.030	2385080.000	94166267.720	0.824
2007	44630.000	27.525	2499550.000	90763521.940	0.824
2008	51274.000	26.364	2546490.000	90232622.502	0.803
2009	50230.000	26.825	2445730.000	89061634.040	0.582
2010	40673.000	26.285	2564400.000	89132298.640	0.588
2011	39078.000	25.088	2693560.000	88995752.154	0.610
2012	43862.000	25.505	2745310.000	87498391.245	0.650
2013	46508.000	25.218	2811350.000	87071510.006	0.620
2014	48418.000	27.481	2927430.000	87507083.925	0.584
2015	52953.000	27.693	3026180.000	84453349.554	0.647
2016	55923.000	27.023	3134740.000	82907742.961	0.607
2017	54100.000	27.021	3267160.000	80971886.520	0.619
2018	58102.000	25.494	3365450.000	82067729.040	0.623
2019	65072.000	25.752	3474110.000	80487400.488	0.615
2020	57071.000	25.411	3403730.000	76995984.912	0.611
2021	54888.000	26.141	3617450.000	74567247.276	0.601
2022	53172.000	24.818	3876800.000	76533515.874	0.569

avgprice_cz	diff_exchr
	0.351
	0.386
	0.377
	0.490
	0.446
	0.512
	0.364
	0.357
	0.384
	0.487
	0.533
	0.540
	0.561
	0.575
	0.568
	0.556
	0.613
	0.524
	0.498
	0.487

YEAR	y	exchr_x	beercons_ger_x	avgprice_dk	avgprice_cz
2003	27978.000	31.590	95826542.180	1.309	0.351
2004	31619.000	32.398	94269340.680	1.604	0.386
2005	35279.000	30.361	93637629.704	0.920	0.377
2006	49058.000	29.030	94166267.720	0.824	0.490
2007	44630.000	27.525	90763521.940	0.824	0.446
2008	51274.000	26.364	90232622.502	0.803	0.512
2009	50230.000	26.825	89061634.040	0.582	0.364
2010	40673.000	26.285	89132298.640	0.588	0.357
2011	39078.000	25.088	88995752.154	0.610	0.384
2012	43862.000	25.505	87498391.245	0.650	0.487
2013	46508.000	25.218	87071510.006	0.620	0.533
2014	48418.000	27.481	87507083.925	0.584	0.540
2015	52953.000	27.693	84453349.554	0.647	0.561
2016	55923.000	27.023	82907742.961	0.607	0.575
2017	54100.000	27.021	80971886.520	0.619	0.568
2018	58102.000	25.494	82067729.040	0.623	0.556
2019	65072.000	25.752	80487400.488	0.615	0.613
2020	57071.000	25.411	76995984.912	0.611	0.524
2021	54888.000	26.141	74567247.276	0.601	0.498
2022	53172.000	24.818	76533515.874	0.569	0.487

inf_cz	inf_ger	gdp_ger	diff_exchr	growth rate
0.100	1.030	2211570.000		
2.800	1.670	2262520.000		2003
1.900	1.550	2288310.000		2004
2.500	1.580	2385080.000		2005
2.800	2.300	2499550.000		2006
6.300	2.630	2546490.000		2007
1.000	0.310	2445730.000		2008
1.500	1.100	2564400.000		2009
1.900	2.080	2693560.000		2010
3.300	2.010	2745310.000		2011
1.400	1.500	2811350.000		2012
0.400	0.910	2927430.000		2013
0.300	0.510	3026180.000		2014
0.700	0.490	3134740.000		2015
2.500	1.510	3267160.000		2016
2.100	1.730	3365450.000		2017
2.800	1.450	3474110.000		2018
3.200	0.140	3403730.000		2019
3.800	3.070	3617450.000		2020
15.100	6.860	3876800.000		2021
				2022

mer exports(EU)	port growth r
27978.000	0.900
31619.000	0.682
35279.000	0.507
49058.000	0.084
44630.000	0.191
51274.000	0.037
50230.000	0.059
40673.000	0.307
39078.000	0.361
43862.000	0.212
46508.000	0.143
48418.000	0.098
52953.000	0.004
55923.000	-0.049
54100.000	-0.017
58102.000	-0.085
65072.000	-0.183
57071.000	-0.068
54888.000	-0.031
53172.000	0.000



port growth r	Year
0.900	2003
0.682	2004
0.507	2005
0.084	2006
0.191	2007
0.037	2008
0.059	2009
0.307	2010
0.361	2011
0.212	2012
0.143	2013
0.098	2014
0.004	2015
-0.049	2016
-0.017	2017
-0.085	2018
-0.183	2019
-0.068	2020
-0.031	2021
0.000	2022

