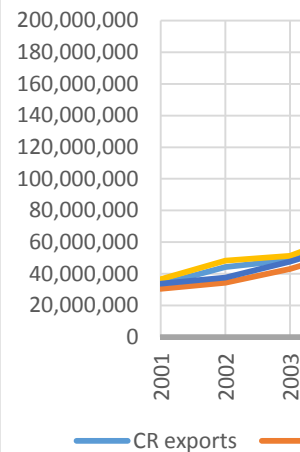


List of exporters for total export

	2001	2002	2003	2004	2005	2006
CR exports	33,384,210	44,263,576	48,720,350	65,771,587	78,208,548	95,140,986
Hungary ex	30,497,719	34,336,583	43,003,656	55,468,212	62,271,839	74,055,406
V4	111,884,993	133,331,478	166,396,472	222,882,761	261,710,590	320,466,752
World	6,114,505,660	6,403,660,225	7,463,286,864	9,086,813,784	10,3	

List of exporters for the selected product: Product 87 - Vehicles other than r

	2001	2002	2003	2004
CR	5,334,871	8,038,881	7,457,204	9,940,575
Hungary	2,716,046	2,984,815	3,526,725	4,402,909
V4	13,671,167	17,710,593	22,372,300	29,953,014
World	554,669,958	614,451,017	711,349,088	838,648,987

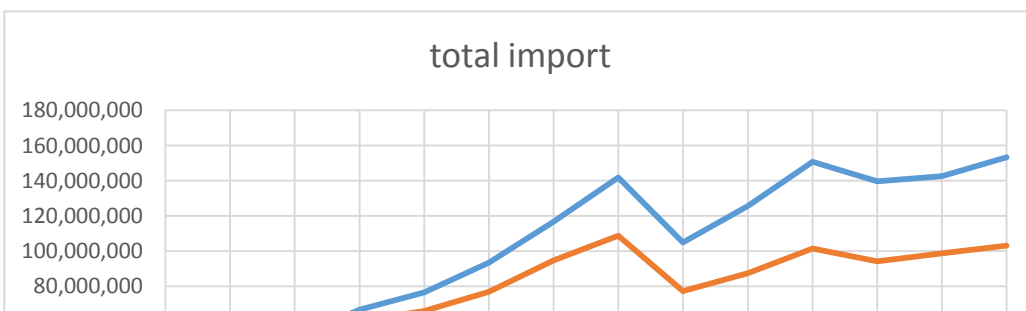
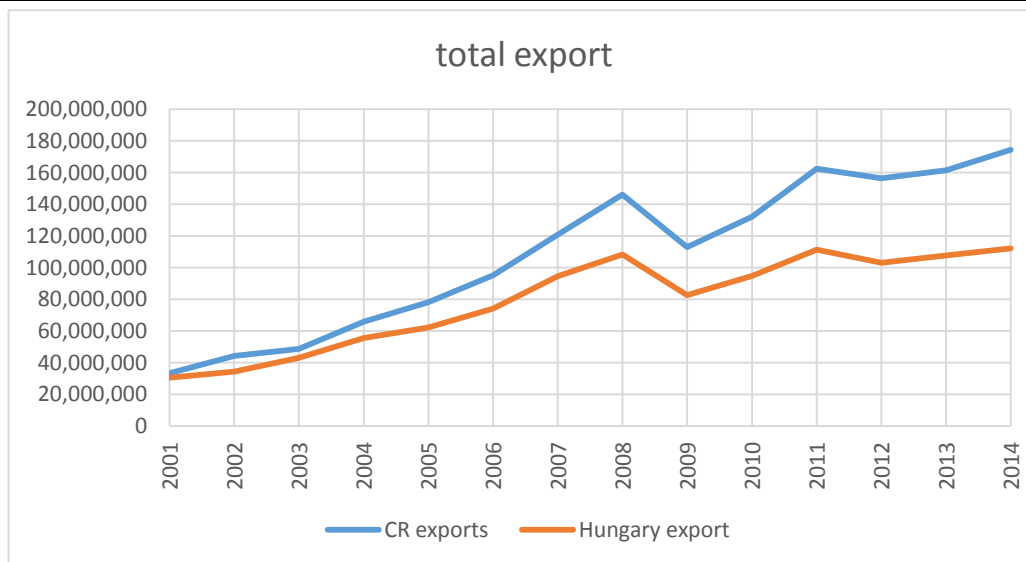


List of importers for total import

	2001	2002	2003	2004
CR import	36,476,654	48,230,794	51,239,343	66,705,682
Hungary in	33,681,734	37,611,572	47,674,542	60,248,602
V4	134,375,504	156,736,444	188,660,763	244,565,357
World	6,324,509,730	6,586,827,695	7,682,853,525	9,382,060,863

List of importers for the selected product: Product 87 - Vehicles other than railway, tramway

	2001	2002	2003	2004	2005	2006
CR	2,968,202	4,226,078	4,511,236	6,068,614	6,651,940	8,059,514
Hungary	2,533,611	3,144,375	4,078,617	5,050,277	5,234,158	6,389,591
V4	11,199,979	14,311,290	18,573,537	23,724,797	24,742,723	31,296,665
World	569,592,172	624,514,752	719,881,435	849,220,912	908,568,823	1,014,794,014



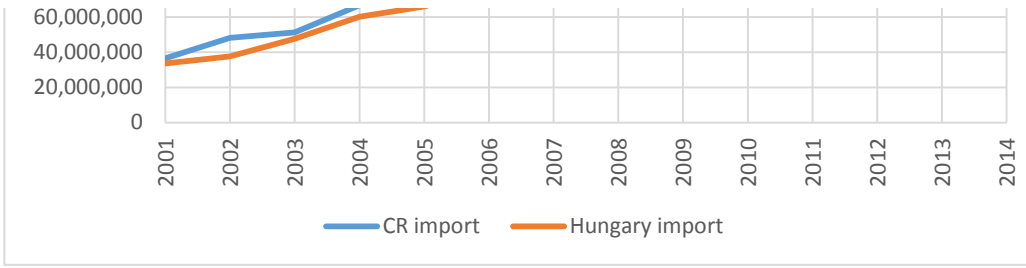
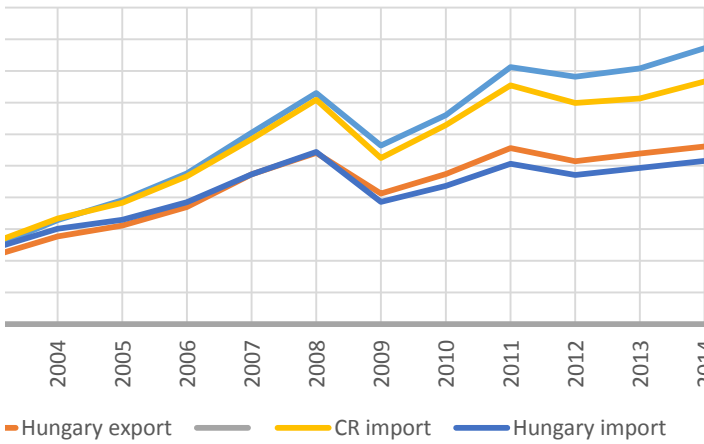


Table: own production, data taken from: <http://www.tradema>

2007	2008	2009	2010	2011	2012	2013
120,900,492	146,087,029	112,884,321	132,140,914	162,391,721	156,422,743	161,524,152
94,590,870	108,211,166	82,571,847	94,748,737	111,216,834	103,006,014	107,729,976
412,312,348	496,346,790	387,650,495	447,953,212	540,200,888	518,899,352	558,286,204

Název grafu



14,095,906,118	16,352,222,166	12,603,159,274	15,254,895,075	18,238,694,336	18,329,977,181	18,705,114,822
----------------	----------------	----------------	----------------	----------------	----------------	----------------

1	18,066,514,928	18,202,308,765	18,684,466,211
---	----------------	----------------	----------------

	2011	2012	2013
--	------	------	------

0	27,823,701	27,177,786	28,857,732
---	------------	------------	------------

1	10,464,760	10,261,439	13,473,898
---	------------	------------	------------

2	79,049,303	76,763,162	85,259,691
---	------------	------------	------------

0	1,272,811,929	1,296,513,102	1,343,434,315
---	---------------	---------------	---------------

	2011	2012	2013
--	------	------	------

0	150,813,416	139,726,824	142,525,808
---	-------------	-------------	-------------

8	101,369,997	94,266,239	98,661,803
---	-------------	------------	------------

5	538,065,223	502,282,527	528,096,513
---	-------------	-------------	-------------

4	18,238,694,336	18,329,977,181	18,705,114,822
---	----------------	----------------	----------------

2007	2008	2009	2010	2011	2012	2013
10,477,541	12,222,173	8,639,981	9,637,740	11,913,138	11,537,469	12,121,773
8,351,815	9,664,425	4,775,326	5,640,265	6,835,185	6,721,255	7,947,695
43,461,322	53,110,604	32,167,850	36,967,073	44,633,630	42,132,951	46,256,544
1,192,117,811	1,233,913,357	855,324,556	1,071,555,294	1,256,263,546	1,287,888,735	1,334,059,087

export 87

5,334,871

import 87

2,968,202

*

total export

33,384,210

total import

36,476,654

z

x

100 0.329301068

y

0.118851565

#REF!

p.org, ths. USD

2014
174,279,452
112,196,295
586,928,830
18,686,070,183

2014
33,152,488
17,810,931
94,922,897
1,381,625,672

2014
153,225,461
103,110,997
554,377,917
18,729,446,763

2014
14,110,946
9,847,504
51,861,953
1,381,365,529

List of exporters for the selected product: Product 87 - Vehicles other than railway, tramway

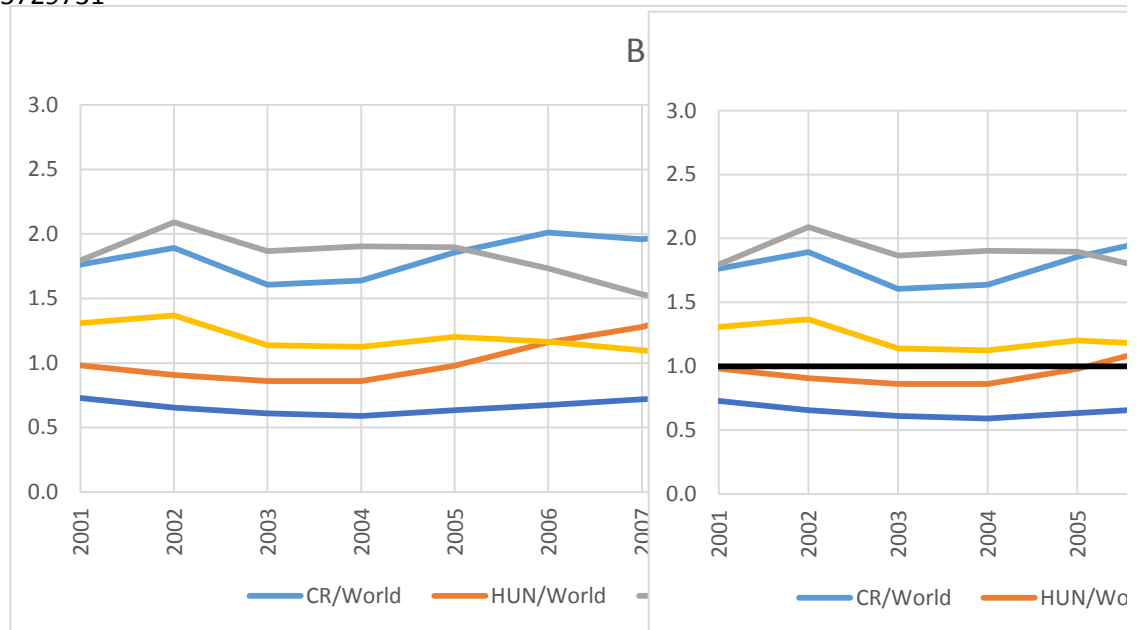
	2001	2002	2003	2004	2005	2006	2007
CR	5,334,871	8,038,881	7,457,204	9,940,575	12,804,246	16,132,165	20,336,387
Hungary	2,716,046	2,984,815	3,526,725	4,402,909	5,376,165	7,248,728	10,390,335
V4	13,671,167	17,710,593	22,372,300	29,953,014	35,639,009	46,618,425	63,102,728
World	554,669,958	614,451,017	711,349,088	838,648,987	912,376,879	1,007,963,152	1,182,991,622

List of exporters for total export

	2001	2002	2003	2004	2005	2006	2007
CR	33,384,210	44,263,576	48,720,350	65,771,587	78,208,548	95,140,986	120,900,492
Hungary	30,497,719	34,336,583	43,003,656	55,468,212	62,271,839	74,055,406	94,590,870
V4	111,884,993	133,331,478	166,396,472	222,882,761	261,710,590	320,466,752	412,312,348
World	6,114,505,660	6,403,660,225	7,463,286,864	9,086,813,784	10,342,460,927	11,952,387,109	13,772,780,256

Ballasa_RCA=Export of product from countryA/total export from countryA/World_total export of the product

	2001	2002	2003	2004	2005	2006	2007
CR/World	1.762	1.893	1.606	1.638	1.856	2.011	1.958
HUN/Worl	0.982	0.906	0.860	0.860	0.979	1.161	1.279
CR/HUN	1.794	2.089	1.866	1.904	1.896	1.732	1.531
CR/V4	1.308	1.367	1.138	1.125	1.202	1.166	1.099
HUN/V4	0.729	0.654	0.610	0.591	0.634	0.673	0.718
RCA	1	1	1	1	1	1	1
HUN/CZE	0.55729731						

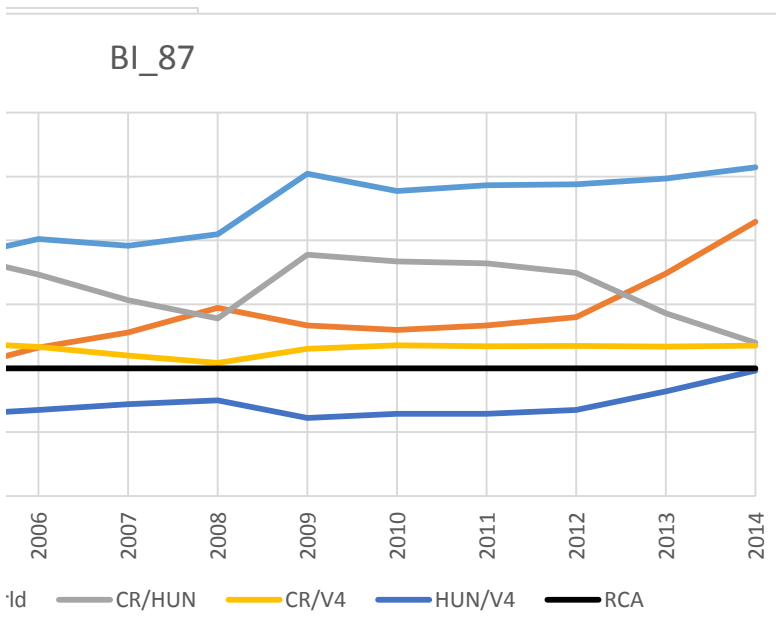


2008	2009	2010	2011	2012	2013	2014
23,226,774	19,575,454	22,732,961	27,823,701	27,177,786	28,857,732	33,152,488
12,370,806	7,583,324	8,878,641	10,464,760	10,261,439	13,473,898	17,810,931
75,852,791	58,394,562	65,393,262	79,049,303	76,763,162	85,259,691	94,922,897
1,239,400,208	847,123,316	1,084,874,170	1,272,811,929	1,296,513,102	1,343,434,315	1,381,625,672

2008	2009	2010	2011	2012	2013	2014
146,087,029	112,884,321	132,140,914	162,391,721	156,422,743	161,524,152	174,279,452
108,211,166	82,571,847	94,748,737	111,216,834	103,006,014	107,729,976	112,196,295
496,346,790	387,650,495	447,953,212	540,200,888	518,899,352	558,286,204	586,928,830
15,972,312,416	12,314,697,361	15,057,105,841	18,066,514,928	18,202,308,765	18,684,466,211	18,686,070,183

ct/world_total export

2008	2009	2010	2011	2012	2013	2014
2.049	2.521	2.388	2.432	2.439	2.485	2.573
1.473	1.335	1.301	1.336	1.399	1.739	2.147
1.391	1.888	1.836	1.821	1.744	1.428	1.198
1.040	1.151	1.178	1.171	1.174	1.170	1.176
0.748	0.610	0.642	0.643	0.673	0.819	0.982
1	1	1	1	1	1	1



B3/B10 je

List of importers for the selected product: Product 87 - Vehicles other than railway, tramway

	2001	2002	2003	2004	2005	2006
CR	2,968,202	4,226,078	4,511,236	6,068,614	6,651,940	8,059,514
Hungary	2,533,611	3,144,375	4,078,617	5,050,277	5,234,158	6,389,591
V4	11,199,979	14,311,290	18,573,537	23,724,797	24,742,723	31,296,665
World	569,592,172	624,514,752	719,881,435	849,220,912	908,568,823	1,014,794,014

List of importers for total import

	2001	2002	2003	2004	2005	2006
CR	36,476,654	48,230,794	51,239,343	66,705,682	76,527,310	93,429,474
Hungary	33,681,734	37,611,572	47,674,542	60,248,602	65,919,579	76,978,511
V4	134,375,504	156,736,444	188,660,763	244,565,357	278,211,527	340,811,915
World	6,324,509,730	6,586,827,695	7,682,853,525	9,382,060,863	10,607,834,908	12,245,802,740

Vollrath_import_RMA=Import of product from countryA/total import from countryA/World_total import

	2001	2002	2003	2004	2005	2006
CR/World	0.904	0.924	0.940	1.005	1.015	1.041
HUN/Worl	0.835	0.882	0.913	0.926	0.927	1.002
CR/V4	0.976	0.960	0.894	0.938	0.977	0.939
HUN/V4	0.903	0.916	0.869	0.864	0.893	0.904

In_RMA

	2001	2002	2003	2004	2005	2006
CR/World	-0.101	-0.079	-0.062	0.005	0.015	0.040
HUN/Worl	-0.180	-0.126	-0.091	-0.077	-0.076	0.002
CR/V4	-0.024	-0.041	-0.112	-0.064	-0.023	-0.063
HUN/V4	-0.103	-0.088	-0.140	-0.146	-0.113	-0.101

RXA(RCA)

	2001	2002	2003	2004	2005	2006
CR/World	1.762	1.893	1.606	1.638	1.856	2.011
HUN/Worl	0.982	0.906	0.860	0.860	0.979	1.161
CR/V4	1.308	1.367	1.138	1.125	1.202	1.166
HUN/V4	0.729	0.654	0.610	0.591	0.634	0.673

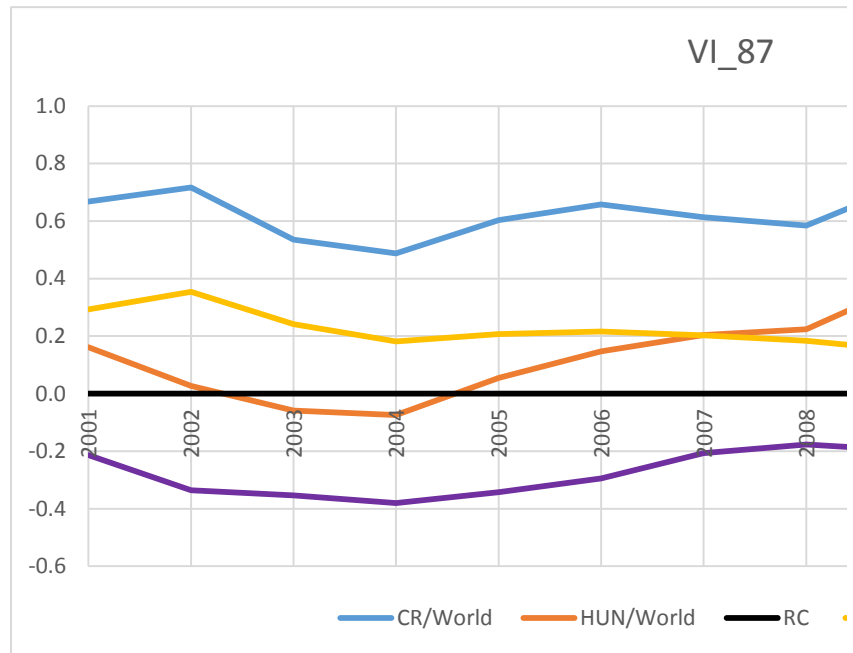
In_RXA(RCA)

	2001	2002	2003	2004	2005	2006
CR/World	0.566	0.638	0.474	0.493	0.618	0.698
HUN/Worl	-0.018	-0.099	-0.150	-0.151	-0.022	0.149
CR/V4	0.268	0.313	0.130	0.117	0.184	0.153
HUN/V4	-0.316	-0.424	-0.494	-0.527	-0.456	-0.396

RC = In_RXA - In_RMA

	2001	2002	2003	2004	2005	2006
CR/World	0.668	0.717	0.536	0.488	0.604	0.658
HUN/Worl	0.162	0.027	-0.059	-0.074	0.054	0.147

RC	0.000	0.000	0.000	0.000	0.000	0.000
CR/V4	0.292	0.354	0.241	0.182	0.207	0.216
HUN/V4	-0.214	-0.336	-0.354	-0.380	-0.342	-0.295



2007	2008	2009	2010	2011	2012
10,477,541	12,222,173	8,639,981	9,637,740	11,913,138	11,537,469
8,351,815	9,664,425	4,775,326	5,640,265	6,835,185	6,721,255
43,461,322	53,110,604	32,167,850	36,967,073	44,633,630	42,132,951
1,192,117,811	1,233,913,357	855,324,556	1,071,555,294	1,256,263,546	1,287,888,735

2007	2008	2009	2010	2011	2012
116,822,197	141,833,836	104,849,536	125,690,658	150,813,416	139,726,824
94,659,727	108,784,724	77,272,443	87,432,095	101,369,997	94,266,239
434,862,199	533,708,631	386,851,760	451,632,314	538,065,223	502,282,527
14,095,906,118	16,352,222,166	12,603,159,274	15,254,895,075	18,238,694,336	18,329,977,181

of the product/world_total import

2007	2008	2009	2010	2011	2012
1.060	1.142	1.214	1.092	1.147	1.175
1.043	1.177	0.911	0.918	0.979	1.015
0.897	0.866	0.991	0.937	0.952	0.984
0.883	0.893	0.743	0.788	0.813	0.850

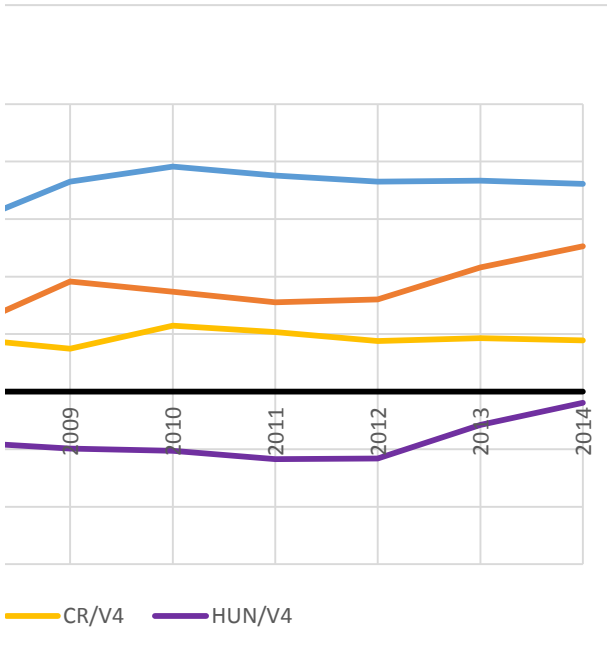
2007	2008	2009	2010	2011	2012
0.059	0.133	0.194	0.088	0.137	0.161
0.042	0.163	-0.094	-0.085	-0.021	0.015
-0.108	-0.144	-0.009	-0.065	-0.049	-0.016
-0.125	-0.113	-0.297	-0.238	-0.207	-0.163

2007	2008	2009	2010	2011	2012
1.958	2.049	2.521	2.388	2.432	2.439
1.279	1.473	1.335	1.301	1.336	1.399
1.099	1.040	1.151	1.178	1.171	1.174
0.718	0.748	0.610	0.642	0.643	0.673

2007	2008	2009	2010	2011	2012
0.672	0.717	0.925	0.870	0.889	0.892
0.246	0.387	0.289	0.263	0.289	0.335
0.094	0.040	0.141	0.164	0.158	0.161
-0.332	-0.290	-0.495	-0.443	-0.442	-0.395

2007	2008	2009	2010	2011	2012
0.613	0.585	0.731	0.783	0.752	0.730
0.204	0.224	0.383	0.348	0.311	0.321

0.000	0.000	0.000	0.000	0.000	0.000
0.203	0.184	0.150	0.230	0.207	0.177
-0.207	-0.177	-0.198	-0.205	-0.234	-0.233



2013	2014
12,121,773	14,110,946
7,947,695	9,847,504
46,256,544	51,861,953
1,334,059,087	1,381,365,529

2013	2014
142,525,808	153,225,461
98,661,803	103,110,997
528,096,513	554,377,917
18,705,114,822	18,729,446,763

2013	2014
1.192	1.249
1.129	1.295
0.971	0.984
0.920	1.021

2013	2014
0.176	0.222
0.122	0.258
-0.029	-0.016
-0.084	0.021

2013	2014
2.485	2.573
1.739	2.147
1.170	1.176
0.819	0.982

2013	2014
0.910	0.945
0.554	0.764
0.157	0.162
-0.200	-0.019

2013	2014
0.734	0.723
0.432	0.506

0.000	0.000
0.186	0.178
-0.116	-0.039

List of exporters for the selected product: Product 87 - Vehicles other than railway, tramway

	2001	2002	2003	2004	2005	2006	2007
CR	5,334,871	8,038,881	7,457,204	9,940,575	12,804,246	16,132,165	20,336,387
Hungary	2,716,046	2,984,815	3,526,725	4,402,909	5,376,165	7,248,728	10,390,335

List of exporters for all products export, USD, 2001-2014 <http://www.trademap.org/tradestat/Cour>

	2001	2002	2003	2004	2005	2006	2007
CR	33,384,210	44,263,576	48,720,350	65,771,587	78,208,548	95,140,986	120,900,492
Hungary	30,497,719	34,336,583	43,003,656	55,468,212	62,271,839	74,055,406	94,590,870

List of importers for the selected product: Product 87 - Vehicles other than railway, tramway

	2001	2002	2003	2004	2005	2006	2007
CR	2,968,202	4,226,078	4,511,236	6,068,614	6,651,940	8,059,514	10,477,541
Hungary	2,533,611	3,144,375	4,078,617	5,050,277	5,234,158	6,389,591	8,351,815

List of importers for all products import, USD, 2001-2014

	2001	2002	2003	2004	2005	2006	2007
CR	36,476,654	48,230,794	51,239,343	66,705,682	76,527,310	93,429,474	116,822,197
Hungary	33,681,734	37,611,572	47,674,542	60,248,602	65,919,579	76,978,511	94,659,727

	2001	2002	2003	2004	2005	2006	2007
CR	3.914	4.691	3.249	3.008	3.839	4.165	3.925
HUN	0.690	0.166	-0.177	-0.222	0.346	0.744	1.081
CA	0	0	0	0	0	0	0



2008	2009	2010	2011	2012	2013	2014
23,226,774	19,575,454	22,732,961	27,823,701	27,177,786	28,857,732	33,152,488
12,370,806	7,583,324	8,878,641	10,464,760	10,261,439	13,473,898	17,810,931

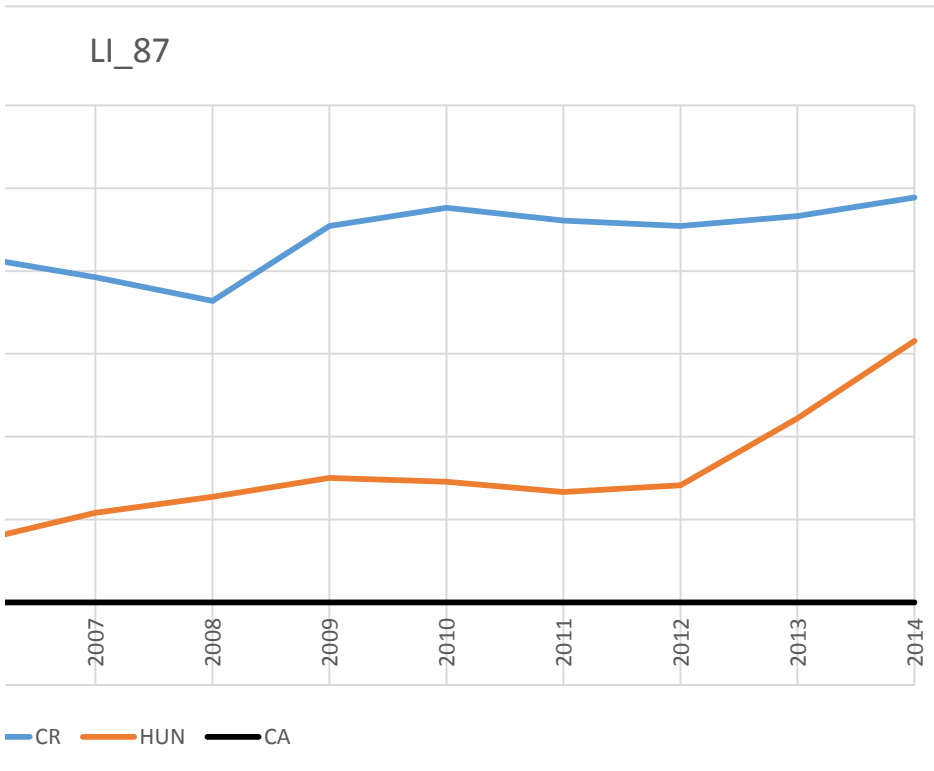
try_SelProduct_TS.aspx

2008	2009	2010	2011	2012	2013	2014
146,087,029	112,884,321	132,140,914	162,391,721	156,422,743	161,524,152	174,279,452
108,211,166	82,571,847	94,748,737	111,216,834	103,006,014	107,729,976	112,196,295

2008	2009	2010	2011	2012	2013	2014
12,222,173	8,639,981	9,637,740	11,913,138	11,537,469	12,121,773	14,110,946
9,664,425	4,775,326	5,640,265	6,835,185	6,721,255	7,947,695	9,847,504

2008	2009	2010	2011	2012	2013	2014
141,833,836	104,849,536	125,690,658	150,813,416	139,726,824	142,525,808	153,225,461
108,784,724	77,272,443	87,432,095	101,369,997	94,266,239	98,661,803	103,110,997

2008	2009	2010	2011	2012	2013	2014
3.640	4.544	4.765	4.611	4.544	4.662	4.886
1.274	1.500	1.457	1.330	1.413	2.222	3.157
0	0	0	0	0	0	0



List of exporters for total export

	2001	2002	2003	2004	2005	2006
CR	33,384,210	44,263,576	48,720,350	65,771,587	78,208,548	95,140,986
Hungary	30,497,719	34,336,583	43,003,656	55,468,212	62,271,839	74,055,406
V4	111,884,993	133,331,478	166,396,472	222,882,761	261,710,590	320,466,752
World	6,114,505,660	6,403,660,225	7,463,286,864	9,086,813,784	10,342,460,927	11,952,387,109

List of exporters for the selected product: Product 8703_Cars

	2001	2002	2003	2004	2005	2006
CR	2,921,265	4,815,258	3,488,865	4,592,023	6,313,166	8,429,659
Hungary	1,466,579	1,481,168	1,513,335	1,837,554	2,221,874	3,292,610
V4	7,563,892	9,844,759	11,273,140	14,850,945	17,737,033	25,038,493
World	308,879,731	343,980,175	393,151,878	455,122,971	487,083,729	535,949,517

List of importers for total import

	2001	2002	2003	2004	2005	2006
CR	36,476,654	48,230,794	51,239,343	66,705,682	76,527,310	93,429,474
Hungary	33,681,734	37,611,572	47,674,542	60,248,602	65,919,579	76,978,511
V4	134,375,504	156,736,444	188,660,763	244,565,357	278,211,527	340,811,915
World	6,324,509,730	6,586,827,695	7,682,853,525	9,382,060,863	10,607,834,908	12,245,802,740

List of importers for the selected product: Product 8703_Cars

	2001	2002	2003	2004	2005	2006
CR	746,507	1,590,556	1,391,749	2,065,817	1,834,756	2,158,615
Hungary	880,001	1,198,899	1,720,343	2,435,607	2,429,516	2,683,429
V4	4,132,654	5,858,006	7,163,939	8,968,511	8,326,438	10,126,154
World	318,930,298	346,784,770	396,246,613	462,354,398	486,449,094	540,707,657

--	--	--	--	--	--	--

2007	2008	2009	2010	2011	2012	2013
120,900,492	146,087,029	112,884,321	132,140,914	162,391,721	156,422,743	161,524,152
94,590,870	108,211,166	82,571,847	94,748,737	111,216,834	103,006,014	107,729,976
412,312,348	496,346,790	387,650,495	447,953,212	540,200,888	518,899,352	558,286,204
13,772,780,256	15,972,312,416	12,314,697,361	15,057,105,841	18,066,514,928	18,202,308,765	18,684,466,211

2007	2008	2009	2010	2011	2012	2013
10,062,434	10,863,019	10,596,240	12,489,973	15,512,077	15,197,220	15,345,240
5,786,675	6,760,917	3,932,818	4,146,002	4,898,437	5,093,635	7,399,122
33,735,586	38,469,796	31,818,220	34,526,213	41,676,900	40,300,149	44,092,159
623,929,846	636,796,500	435,443,393	556,215,423	637,319,425	645,766,656	673,047,456

2007	2008	2009	2010	2011	2012	2013
116,822,197	141,833,836	104,849,536	125,690,658	150,813,416	139,726,824	142,525,808
94,659,727	108,784,724	77,272,443	87,432,095	101,369,997	94,266,239	98,661,803
434,862,199	533,708,631	386,851,760	451,632,314	538,065,223	502,282,527	528,096,513
14,095,906,118	16,352,222,166	12,603,159,274	15,254,895,075	18,238,694,336	18,329,977,181	18,705,114,822

2007	2008	2009	2010	2011	2012	2013
2,716,646	3,303,294	2,409,953	2,339,422	2,835,413	2,460,863	2,519,236
3,411,895	3,277,693	1,049,531	1,498,758	2,043,562	1,905,477	1,947,572
13,636,657	17,300,434	10,344,167	10,934,188	11,738,844	10,734,895	11,276,908
628,125,937	634,219,116	442,346,194	551,841,346	634,763,355	647,560,310	671,542,859

--	--	--	--	--	--	--

2014
174,279,452
112,196,295
586,928,830
18,686,070,183

2014	1,381,625,672
17,811,636	0.50740019
11,031,183	
50,280,701	
701,037,129	

2014
153,225,461
103,110,997
554,377,917
18,729,446,763

2014
3,040,384
2,316,747
13,421,777
701,266,596

--

List of exporters for the selected product: Product 8703_Cars

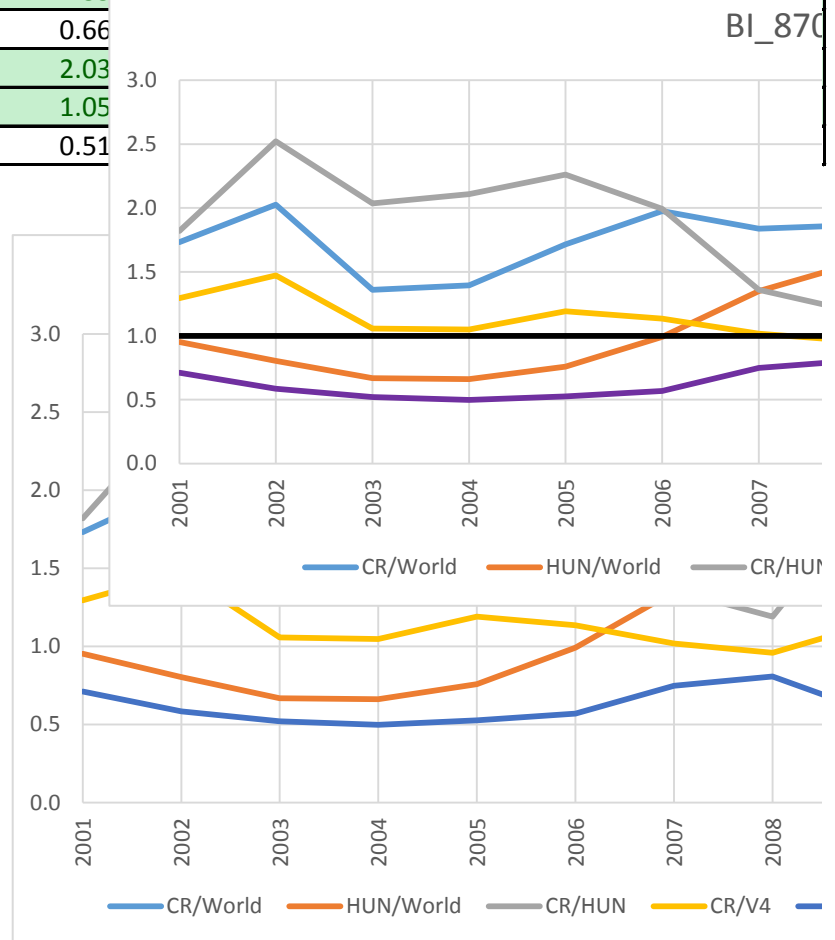
	2001	2002	2003	2004	2005	2006	2007
CR	2,921,265	4,815,258	3,488,865	4,592,023	6,313,166	8,429,659	10,062,434
Hungary	1,466,579	1,481,168	1,513,335	1,837,554	2,221,874	3,292,610	5,786,675
V4	7,563,892	9,844,759	11,273,140	14,850,945	17,737,033	25,038,493	33,735,586
World	308,879,731	343,980,175	393,151,878	455,122,971	487,083,729	535,949,517	623,929,846

List of exporters for total export

	2001	2002	2003	2004	2005	2006	2007
CR	33,384,210	44,263,576	48,720,350	65,771,587	78,208,548	95,140,986	120,900,492
Hungary	30,497,719	34,336,583	43,003,656	55,468,212	62,271,839	74,055,406	94,590,870
V4	111,884,993	133,331,478	166,396,472	222,882,761	261,710,590	320,466,752	412,312,348
World	6,114,505,660	6,403,660,225	7,463,286,864	9,086,813,784	10,342,460,927	11,952,387,109	13,772,780,256

Ballasa_RCA=Export of product from countryA/total export from countryA/World_total export of the produ

	2001	2002	2003	2004	2005	2006	2007
CR/World	1.732	2.025	1.35				
HUN/Worl	0.952	0.803	0.66				
CR/HUN	1.820	2.522	2.03				
CR/V4	1.294	1.473	1.05				
HUN/V4	0.711	0.584	0.51				
RCA	1	1					



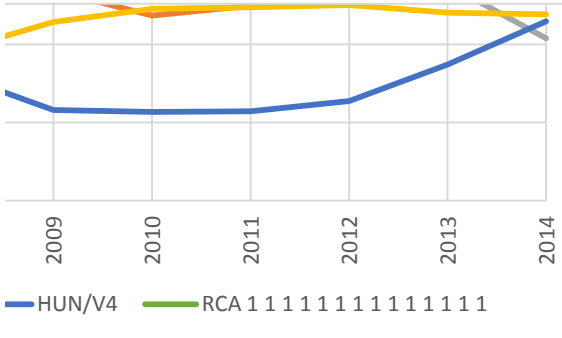
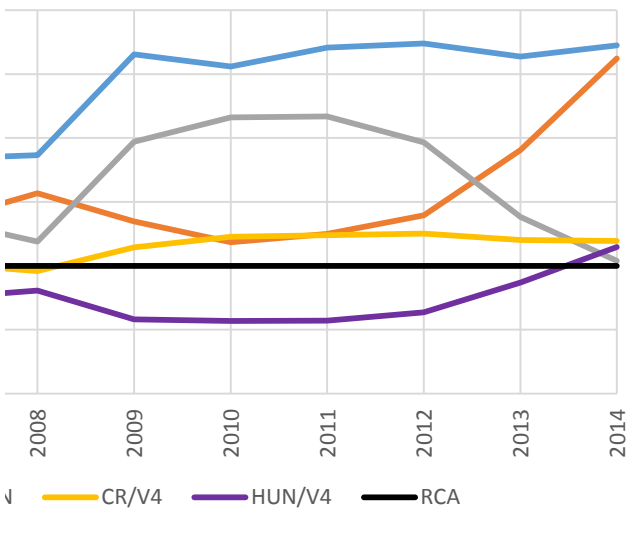
2008	2009	2010	2011	2012	2013	2014
10,863,019	10,596,240	12,489,973	15,512,077	15,197,220	15,345,240	17,811,636
6,760,917	3,932,818	4,146,002	4,898,437	5,093,635	7,399,122	11,031,183
38,469,796	31,818,220	34,526,213	41,676,900	40,300,149	44,092,159	50,280,701
636,796,500	435,443,393	556,215,423	637,319,425	645,766,656	673,047,456	701,037,129

2008	2009	2010	2011	2012	2013	2014
146,087,029	112,884,321	132,140,914	162,391,721	156,422,743	161,524,152	174,279,452
108,211,166	82,571,847	94,748,737	111,216,834	103,006,014	107,729,976	112,196,295
496,346,790	387,650,495	447,953,212	540,200,888	518,899,352	558,286,204	586,928,830
15,972,312,416	12,314,697,361	15,057,105,841	18,066,514,928	18,202,308,765	18,684,466,211	18,686,070,183

ct/world_total export

2008	2009	2010	2011	2012	2013	2014
			2.708	2.739	2.637	2.724
			1.249	1.394	1.907	2.621
			2.169	1.965	1.383	1.039
			1.238	1.251	1.203	1.193
			0.571	0.637	0.870	1.148
			1	1	1	1

13



List of importers for the selected product: Product 8703_Cars

	2001	2002	2003	2004	2005	2006
CR	746,507	1,590,556	1,391,749	2,065,817	1,834,756	2,158,615
Hungary	880,001	1,198,899	1,720,343	2,435,607	2,429,516	2,683,429
V4	4,132,654	5,858,006	7,163,939	8,968,511	8,326,438	10,126,154
World	318,930,298	346,784,770	396,246,613	462,354,398	486,449,094	540,707,657

List of importers for total import

	2001	2002	2003	2004	2005	2006
CR	36,476,654	48,230,794	51,239,343	66,705,682	76,527,310	93,429,474
Hungary	33,681,734	37,611,572	47,674,542	60,248,602	65,919,579	76,978,511
V4	134,375,504	156,736,444	188,660,763	244,565,357	278,211,527	340,811,915
World	6,324,509,730	6,586,827,695	7,682,853,525	9,382,060,863	10,607,834,908	12,245,802,740

Vollrath_import_RMA=Import of product from countryA/total import from countryA/World

	2001	2002	2003	2004	2005	2006
CR/World	0.406	0.626	0.527	0.628	0.523	0.523
HUN/Worl	0.518	0.605	0.700	0.820	0.804	0.789
CR/V4	0.665	0.882	0.715	0.845	0.801	0.778
HUN/V4	0.850	0.853	0.950	1.102	1.231	1.173

In_RMA

	2001	2002	2003	2004	2005	2006
CR/World	-0.902	-0.468	-0.641	-0.465	-0.649	-0.648
HUN/Worl	-0.658	-0.502	-0.357	-0.198	-0.219	-0.236
CR/V4	-0.407	-0.125	-0.335	-0.169	-0.222	-0.252
HUN/V4	-0.163	-0.159	-0.051	0.097	0.208	0.160

RXA(RCA)

	2001	2002	2003	2004	2005	2006
CR/World	1.732	2.025	1.359	1.394	1.714	1.976
HUN/Worl	0.952	0.803	0.668	0.661	0.758	0.992
CR/V4	1.294	1.473	1.057	1.048	1.191	1.134
HUN/V4	0.711	0.584	0.519	0.497	0.526	0.569

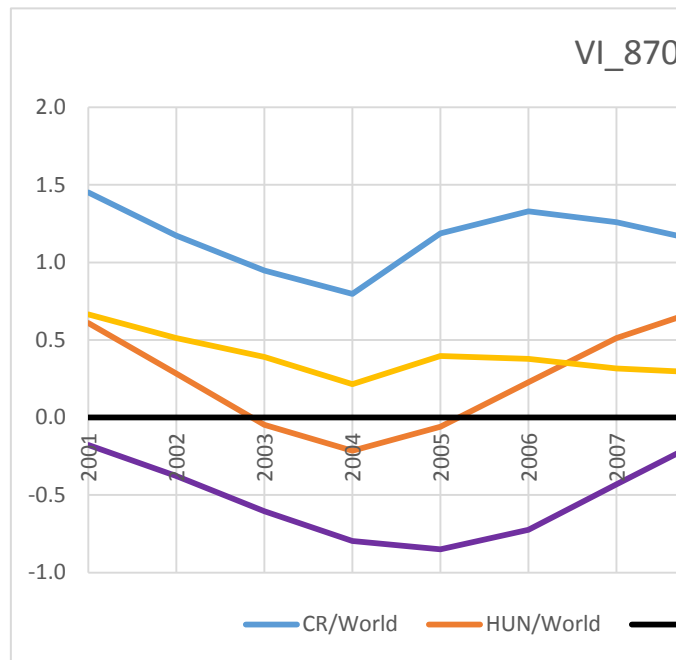
In_RXA(RCA)

	2001	2002	2003	2004	2005	2006
CR/World	0.549	0.706	0.307	0.332	0.539	0.681
HUN/Worl	-0.049	-0.219	-0.403	-0.413	-0.278	-0.008
CR/V4	0.258	0.388	0.055	0.047	0.175	0.126
HUN/V4	-0.341	-0.537	-0.655	-0.699	-0.642	-0.564

RC = In_RXA - In_RMA

	2001	2002	2003	2004	2005	2006
CR/World	1.451	1.173	0.948	0.797	1.187	1.329
HUN/Worl	0.608	0.282	-0.046	-0.215	-0.059	0.228

RC	0	0	0	0	0	0
CR/V4	0.665	0.513	0.390	0.216	0.397	0.377
HUN/V4	-0.178	-0.378	-0.604	-0.796	-0.850	-0.724



2007	2008	2009	2010	2011	2012	2013
2,716,646	3,303,294	2,409,953	2,339,422	2,835,413	2,460,863	2,519,236
3,411,895	3,277,693	1,049,531	1,498,758	2,043,562	1,905,477	1,947,572
13,636,657	17,300,434	10,344,167	10,934,188	11,738,844	10,734,895	11,276,908
628,125,937	634,219,116	442,346,194	551,841,346	634,763,355	647,560,310	671,542,859

2007	2008	2009	2010	2011	2012	2013
116,822,197	141,833,836	104,849,536	125,690,658	150,813,416	139,726,824	142,525,808
94,659,727	108,784,724	77,272,443	87,432,095	101,369,997	94,266,239	98,661,803
434,862,199	533,708,631	386,851,760	451,632,314	538,065,223	502,282,527	528,096,513
14,095,906,118	16,352,222,166	12,603,159,274	15,254,895,075	18,238,694,336	18,329,977,181	18,705,114,822

total import of the product/world_total import

2007	2008	2009	2010	2011	2012	2013
0.522	0.600	0.655	0.515	0.540	0.499	0.492
0.809	0.777	0.387	0.474	0.579	0.572	0.550
0.742	0.718	0.860	0.769	0.862	0.824	0.828
1.149	0.929	0.508	0.708	0.924	0.946	0.924

2007	2008	2009	2010	2011	2012	2013
-0.650	-0.510	-0.423	-0.665	-0.616	-0.696	-0.709
-0.212	-0.253	-0.949	-0.747	-0.546	-0.558	-0.598
-0.299	-0.331	-0.151	-0.263	-0.149	-0.194	-0.189
0.139	-0.073	-0.677	-0.345	-0.079	-0.056	-0.079

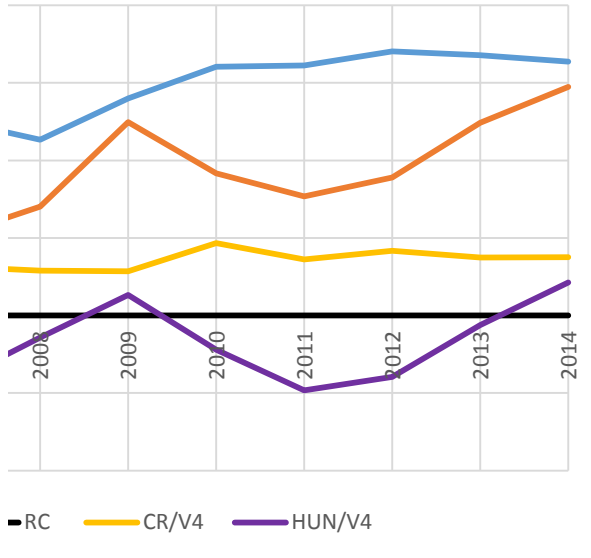
2007	2008	2009	2010	2011	2012	2013
1.837	1.865	2.655	2.559	2.708	2.739	2.637
1.350	1.567	1.347	1.185	1.249	1.394	1.907
1.017	0.959	1.144	1.226	1.238	1.251	1.203
0.748	0.806	0.580	0.568	0.571	0.637	0.870

2007	2008	2009	2010	2011	2012	2013
0.608	0.623	0.976	0.940	0.996	1.007	0.970
0.300	0.449	0.298	0.169	0.222	0.332	0.645
0.017	-0.041	0.134	0.204	0.214	0.224	0.185
-0.291	-0.216	-0.544	-0.566	-0.561	-0.451	-0.140

2007	2008	2009	2010	2011	2012	2013
1.259	1.133	1.400	1.604	1.612	1.704	1.678
0.513	0.702	1.247	0.916	0.768	0.890	1.244

0	0	0	0	0	0	0
0.316	0.289	0.286	0.467	0.362	0.417	0.374
-0.430	-0.142	0.133	-0.221	-0.482	-0.396	-0.061

)3



2014
3,040,384
2,316,747
13,421,777
701,266,596

2014
153,225,461
103,110,997
554,377,917
18,729,446,763

2014
0.530
0.600
0.820
0.928

2014
-0.635
-0.511
-0.199
-0.075

2014
2.724
2.621
1.193
1.148

2014
1.002
0.963
0.176
0.138

2014
1.637
1.474

0
0.375
0.212

List of exporters for the selected product: Product 8703

	2001	2002	2003	2004	2005	2006	2007	2008
CR	2,921,265	4,815,258	3,488,865	4,592,023	6,313,166	8,429,659	10,062,434	10,863,019
Hungary	1,466,579	1,481,168	1,513,335	1,837,554	2,221,874	3,292,610	5,786,675	6,760,917

List of exporters for all products export

	2001	2002	2003	2004	2005	2006	2007	2008
CR	33,384,210	44,263,576	48,720,350	65,771,587	78,208,548	95,140,986	120,900,492	146,087,029
Hungary	30,497,719	34,336,583	43,003,656	55,468,212	62,271,839	74,055,406	94,590,870	108,211,166

List of importers for the selected product: Product 8703

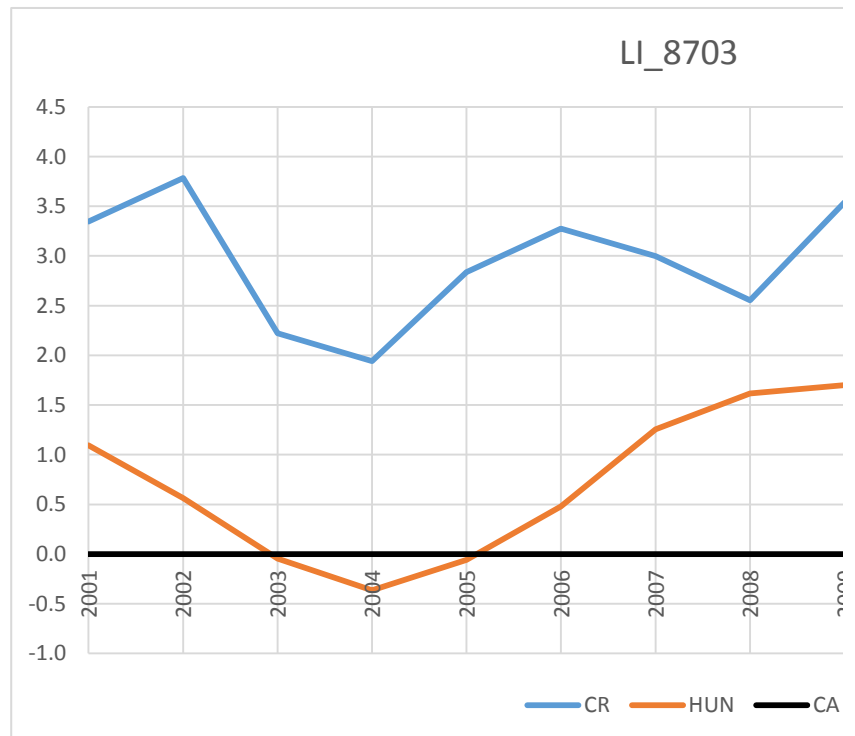
	2001	2002	2003	2004	2005	2006	2007	2008
CR	746,507	1,590,556	1,391,749	2,065,817	1,834,756	2,158,615	2,716,646	3,303,294
Hungary	880,001	1,198,899	1,720,343	2,435,607	2,429,516	2,683,429	3,411,895	3,277,693

List of importers for all products import

	2001	2002	2003	2004	2005	2006	2007	2008
CR	36,476,654	48,230,794	51,239,343	66,705,682	76,527,310	93,429,474	116,822,197	141,833,836
Hungary	33,681,734	37,611,572	47,674,542	60,248,602	65,919,579	76,978,511	94,659,727	108,784,724

LFI_8703

	2001	2002	2003	2004	2005	2006	2007	2008
CR	3.345	3.783	2.221	1.942	2.837	3.275	2.998	2.553
HUN	1.095	0.562	-0.045	-0.364	-0.059	0.480	1.257	1.617
CA	0	0	0	0	0	0	0	0



2009	2010	2011	2012	2013	2014
10,596,240	12,489,973	15,512,077	15,197,220	15,345,240	17,811,636
3,932,818	4,146,002	4,898,437	5,093,635	7,399,122	11,031,183

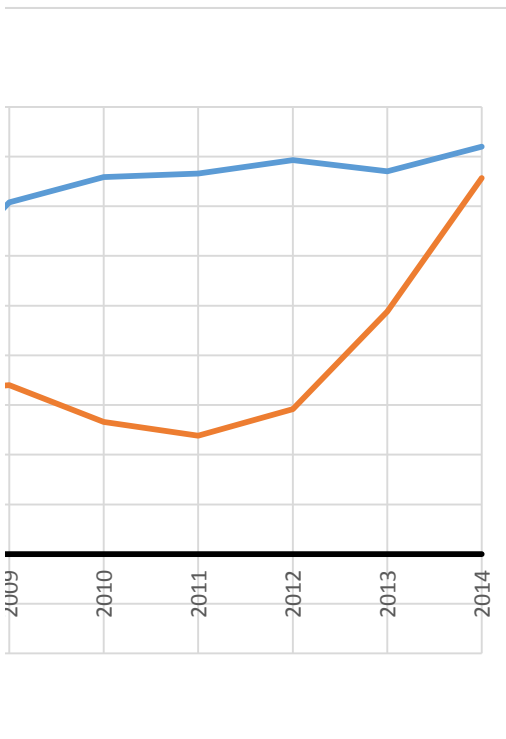
2009	2010	2011	2012	2013	2014
112,884,321	132,140,914	162,391,721	156,422,743	161,524,152	174,279,452
82,571,847	94,748,737	111,216,834	103,006,014	107,729,976	112,196,295

2009	2010	2011	2012	2013	2014
2,409,953	2,339,422	2,835,413	2,460,863	2,519,236	3,040,384
1,049,531	1,498,758	2,043,562	1,905,477	1,947,572	2,316,747

2009	2010	2011	2012	2013	2014
104,849,536	125,690,658	150,813,416	139,726,824	142,525,808	153,225,461
77,272,443	87,432,095	101,369,997	94,266,239	98,661,803	103,110,997

2009	2010	2011	2012	2013	2014
3.539	3.793	3.831	3.965	3.851	4.101
1.700	1.329	1.192	1.459	2.442	3.786

0 0 0 0 0 0



List of exporters for total export

	2001	2002	2003	2004	2005	2006	2007
CR	33,384,210	44,263,576	48,720,350	65,771,587	78,208,548	95,140,986	120,900,492
Hungary	30,497,719	34,336,583	43,003,656	55,468,212	62,271,839	74,055,406	94,590,870
V4	111,884,993	133,331,478	166,396,472	222,882,761	261,710,590	320,466,752	412,312,348
World	6,114,505,660	6,403,660,225	7,463,286,864	9,086,813,784	10,342,460,927	11,952,387,109	13,772,780,256

List of exporters for the selected product: Product 8708_Parts&access_of_motor_vehicles

	2001	2002	2003	2004	2005	2006	2007
CR	1,939,291	2,708,158	3,401,700	4,529,481	5,396,907	6,312,726	8,146,485
Hungary	892,108	1,152,913	1,593,352	1,961,451	2,304,183	2,891,178	3,556,939
V4	4,325,836	5,878,137	8,371,669	10,746,938	12,372,508	14,987,694	20,142,056
World	132,748,310	147,988,273	172,782,675	205,685,650	225,747,107	248,690,278	284,164,315

List of importers for total import

	2001	2002	2003	2004	2005	2006	2007
CR	36,476,654	48,230,794	51,239,343	66,705,682	76,527,310	93,429,474	116,822,197
Hungary	33,681,734	37,611,572	47,674,542	60,248,602	65,919,579	76,978,511	94,659,727
V4	134,375,504	156,736,444	188,660,763	244,565,357	278,211,527	340,811,915	434,862,199
World	6,324,509,730	6,586,827,695	7,682,853,525	9,382,060,863	10,607,834,908	12,245,802,740	14,095,906,118

List of importers for the selected product: Product 8708_Parts&access_of_motor_vehicles

	2001	2002	2003	2004	2005	2006	2007
CR	1,484,515	1,720,666	2,065,420	2,483,467	3,164,902	3,947,483	5,015,058
Hungary	761,282	858,590	1,007,255	1,109,060	1,229,959	1,490,793	2,800,030
V4	4,140,829	4,703,927	6,608,009	8,465,192	9,496,358	12,399,533	17,464,903
World	135,378,134	150,469,918	174,200,307	206,258,778	222,166,841	246,010,165	283,715,986

2008	2009	2010	2011	2012	2013	2014
146,087,029	112,884,321	132,140,914	162,391,721	156,422,743	161,524,152	174,279,452
108,211,166	82,571,847	94,748,737	111,216,834	103,006,014	107,729,976	112,196,295
496,346,790	387,650,495	447,953,212	540,200,888	518,899,352	558,286,204	586,928,830
15,972,312,416	12,314,697,361	15,057,105,841	18,066,514,928	18,202,308,765	18,684,466,211	18,686,070,183

2008	2009	2010	2011	2012	2013	2014
9,573,396	7,409,185	8,530,155	10,571,578	10,147,817	11,564,263	13,176,052
3,690,338	2,660,385	3,380,935	4,217,499	3,855,282	4,576,025	5,301,671
23,762,778	18,517,074	22,108,492	26,818,721	25,280,807	29,350,715	32,958,498
295,975,678	219,230,891	290,600,413	341,542,610	344,826,248	362,394,472	371,935,936

2008	2009	2010	2011	2012	2013	2014
141,833,836	104,849,536	125,690,658	150,813,416	139,726,824	142,525,808	153,225,461
108,784,724	77,272,443	87,432,095	101,369,997	94,266,239	98,661,803	103,110,997
533,708,631	386,851,760	451,632,314	538,065,223	502,282,527	528,096,513	554,377,917
16,352,222,166	12,603,159,274	15,254,895,075	18,238,694,336	18,329,977,181	18,705,114,822	18,729,446,763

2008	2009	2010	2011	2012	2013	2014
5,653,605	4,854,550	5,673,963	7,091,503	7,300,866	7,479,028	8,544,654
2,976,034	2,018,806	2,378,062	2,893,601	2,587,260	3,862,642	5,232,050
20,221,639	15,079,392	18,157,304	22,875,777	22,084,410	24,642,974	27,518,511
293,561,240	215,585,445	280,374,450	332,307,678	337,401,442	357,064,350	370,796,259

1,381,625,672

0.26920167

List of exporters for the selected product: Product 8708

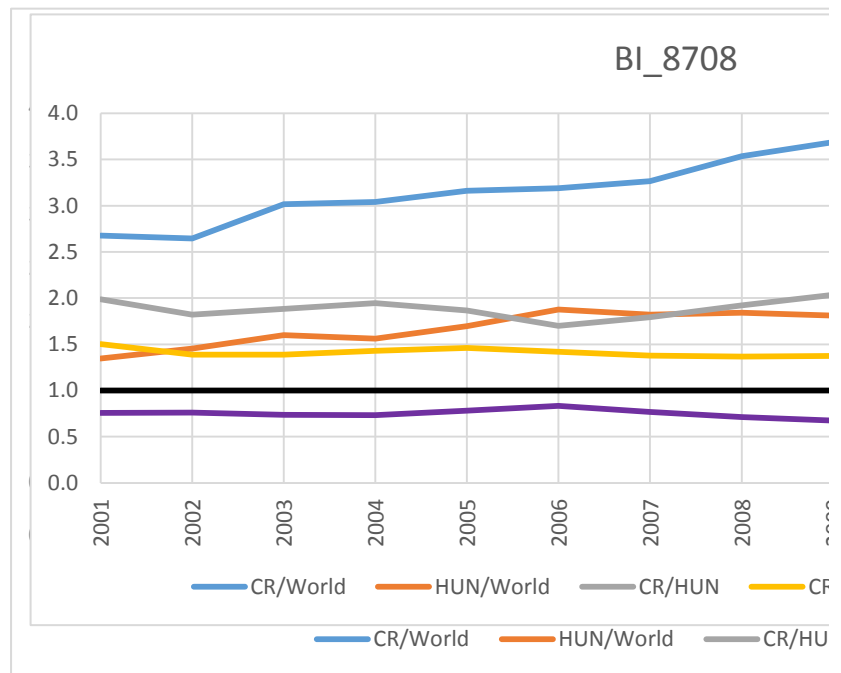
	2001	2002	2003	2004	2005	2006	2007
CR	1,939,291	2,708,158	3,401,700	4,529,481	5,396,907	6,312,726	8,146,485
Hungary	892,108	1,152,913	1,593,352	1,961,451	2,304,183	2,891,178	3,556,939
V4	4,325,836	5,878,137	8,371,669	10,746,938	12,372,508	14,987,694	20,142,056
World	132,748,310	147,988,273	172,782,675	205,685,650	225,747,107	248,690,278	284,164,315

List of exporters for total export

	2001	2002	2003	2004	2005	2006	2007
CR	33,384,210	44,263,576	48,720,350	65,771,587	78,208,548	95,140,986	120,900,492
Hungary	30,497,719	34,336,583	43,003,656	55,468,212	62,271,839	74,055,406	94,590,870
V4	111,884,993	133,331,478	166,396,472	222,882,761	261,710,590	320,466,752	412,312,348
World	6,114,505,660	6,403,660,225	7,463,286,864	9,086,813,784	10,342,460,927	11,952,387,109	13,772,780,256

Ballasa_RCA=Export of product from countryA/total export from countryA/World_total export of the produ

	2001	2002	2003	2004	2005	2006	2007
CR/World	2.676	2.647	3.016	3.042	3.161	3.189	3.266
HUN/Worl	1.347	1.453	1.600	1.562	1.695	1.876	1.823
CR/HUN	1.986	1.822	1.884	1.947	1.865	1.700	1.792
CR/V4	1.502	1.388	1.388	1.428	1.460	1.419	1.379
HUN/V4	0.757	0.762	0.736	0.733	0.783	0.835	0.770
RCA	1	1	1	1	1	1	1

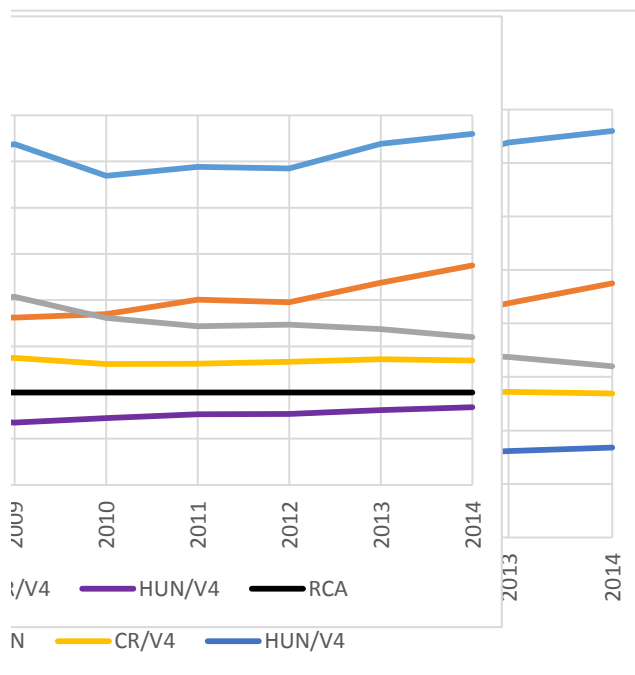


2008	2009	2010	2011	2012	2013	2014
9,573,396	7,409,185	8,530,155	10,571,578	10,147,817	11,564,263	13,176,052
3,690,338	2,660,385	3,380,935	4,217,499	3,855,282	4,576,025	5,301,671
23,762,778	18,517,074	22,108,492	26,818,721	25,280,807	29,350,715	32,958,498
295,975,678	219,230,891	290,600,413	341,542,610	344,826,248	362,394,472	371,935,936

2008	2009	2010	2011	2012	2013	2014
146,087,029	112,884,321	132,140,914	162,391,721	156,422,743	161,524,152	174,279,452
108,211,166	82,571,847	94,748,737	111,216,834	103,006,014	107,729,976	112,196,295
496,346,790	387,650,495	447,953,212	540,200,888	518,899,352	558,286,204	586,928,830
15,972,312,416	12,314,697,361	15,057,105,841	18,066,514,928	18,202,308,765	18,684,466,211	18,686,070,183

ct/world_total export

2008	2009	2010	2011	2012	2013	2014
3.536	3.687	3.345	3.444	3.425	3.691	3.798
1.840	1.810	1.849	2.006	1.976	2.190	2.374
1.922	2.037	1.809	1.717	1.733	1.685	1.600
1.369	1.374	1.308	1.311	1.332	1.362	1.346
0.712	0.674	0.723	0.764	0.768	0.808	0.841
1	1	1	1	1	1	1



List of importers for the selected product: Product 8708_Parts&access_of_motor_vehicles

	2001	2002	2003	2004	2005	2006	2007
CR	1,484,515	1,720,666	2,065,420	2,483,467	3,164,902	3,947,483	5,015,058
Hungary	761,282	858,590	1,007,255	1,109,060	1,229,959	1,490,793	2,800,030
V4	4,140,829	4,703,927	6,608,009	8,465,192	9,496,358	12,399,533	17,464,903
World	135,378,134	150,469,918	174,200,307	206,258,778	222,166,841	246,010,165	283,715,986

List of importers for total import

	2001	2002	2003	2004	2005	2006	2007
CR	36,476,654	48,230,794	51,239,343	66,705,682	76,527,310	93,429,474	116,822,197
Hungary	33,681,734	37,611,572	47,674,542	60,248,602	65,919,579	76,978,511	94,659,727
V4	134,375,504	156,736,444	188,660,763	244,565,357	278,211,527	340,811,915	434,862,199
World	6,324,509,730	6,586,827,695	7,682,853,525	9,382,060,863	10,607,834,908	12,245,802,740	14,095,906,118

Vollrath_import_RMA=Import of product from countryA/total import from countryA/World_total import of

	2001	2002	2003	2004	2005	2006	2007
CR/World	1.901	1.562	1.778	1.693	1.975	2.103	2.133
HUN/Worl	1.056	0.999	0.932	0.837	0.891	0.964	1.470
CR/V4	1.321	1.189	1.151	1.076	1.212	1.161	1.069
HUN/V4	0.733	0.761	0.603	0.532	0.547	0.532	0.737

In_RMA

	2001	2002	2003	2004	2005	2006	2007
CR/World	0.643	0.446	0.575	0.527	0.680	0.743	0.757
HUN/Worl	0.054	-0.001	-0.071	-0.178	-0.116	-0.037	0.385
CR/V4	0.278	0.173	0.140	0.073	0.192	0.150	0.067
HUN/V4	-0.310	-0.274	-0.506	-0.631	-0.604	-0.631	-0.306

RXA(RCA)

	2001	2002	2003	2004	2005	2006	2007
CR/World	2.676	2.647	3.016	3.042	3.161	3.189	3.266
HUN/Worl	1.347	1.453	1.600	1.562	1.695	1.876	1.823
CR/V4	1.502	1.388	1.388	1.428	1.460	1.419	1.379
HUN/V4	0.757	0.762	0.736	0.733	0.783	0.835	0.770

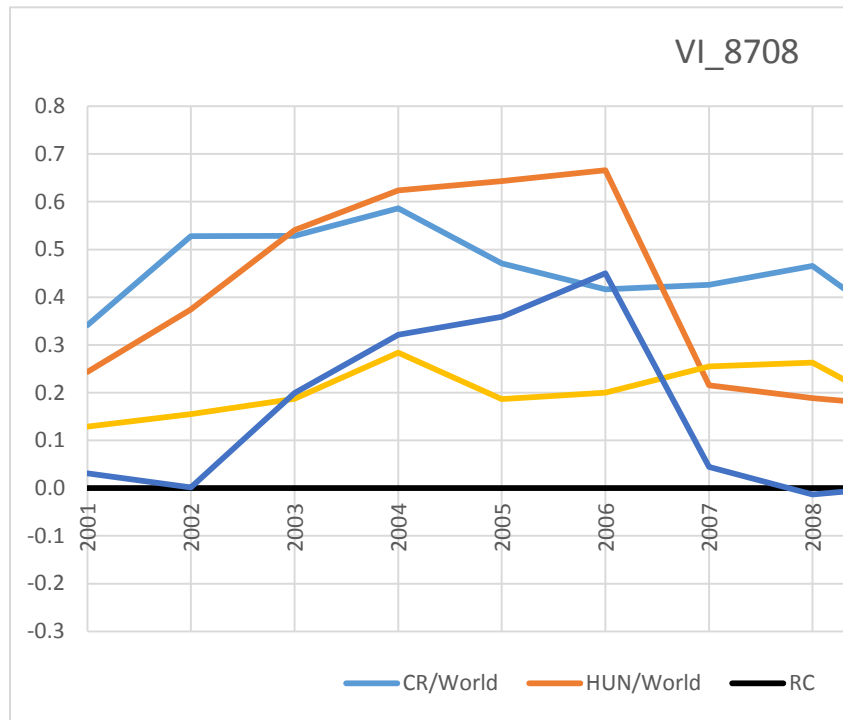
In_RXA(RCA)

	2001	2002	2003	2004	2005	2006	2007
CR/World	0.984	0.974	1.104	1.113	1.151	1.160	1.184
HUN/Worl	0.298	0.374	0.470	0.446	0.528	0.629	0.600
CR/V4	0.407	0.328	0.328	0.356	0.378	0.350	0.322
HUN/V4	-0.279	-0.272	-0.306	-0.310	-0.245	-0.181	-0.262

RC = In_RXA - In_RMA

	2001	2002	2003	2004	2005	2006	2007
CR/World	0.342	0.528	0.529	0.586	0.471	0.416	0.426
HUN/Worl	0.244	0.374	0.541	0.624	0.643	0.666	0.215

RC	0	0	0	0	0	0	0
CR/V4	0.129	0.155	0.187	0.284	0.186	0.200	0.255
HUN/V4	0.031	0.001	0.200	0.321	0.359	0.450	0.044



2008	2009	2010	2011	2012	2013	2014
5,653,605	4,854,550	5,673,963	7,091,503	7,300,866	7,479,028	8,544,654
2,976,034	2,018,806	2,378,062	2,893,601	2,587,260	3,862,642	5,232,050
20,221,639	15,079,392	18,157,304	22,875,777	22,084,410	24,642,974	27,518,511
293,561,240	215,585,445	280,374,450	332,307,678	337,401,442	357,064,350	370,796,259

2008	2009	2010	2011	2012	2013	2014
141,833,836	104,849,536	125,690,658	150,813,416	139,726,824	142,525,808	153,225,461
108,784,724	77,272,443	87,432,095	101,369,997	94,266,239	98,661,803	103,110,997
533,708,631	386,851,760	451,632,314	538,065,223	502,282,527	528,096,513	554,377,917
16,352,222,166	12,603,159,274	15,254,895,075	18,238,694,336	18,329,977,181	18,705,114,822	18,729,446,763

f the product/world_total import

2008	2009	2010	2011	2012	2013	2014
2.220	2.707	2.456	2.581	2.839	2.749	2.817
1.524	1.527	1.480	1.567	1.491	2.051	2.563
1.052	1.188	1.123	1.106	1.188	1.125	1.123
0.722	0.670	0.677	0.671	0.624	0.839	1.022

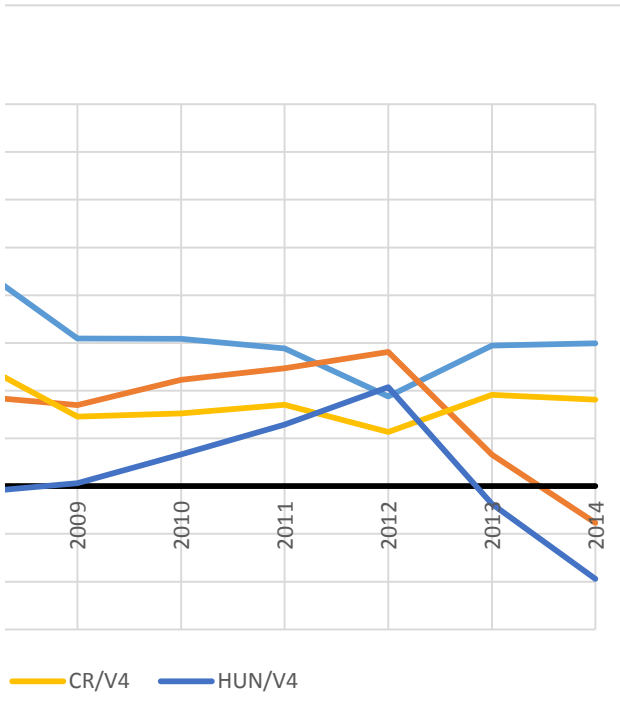
2008	2009	2010	2011	2012	2013	2014
0.798	0.996	0.899	0.948	1.043	1.011	1.036
0.421	0.424	0.392	0.449	0.399	0.718	0.941
0.051	0.172	0.116	0.101	0.173	0.117	0.116
-0.326	-0.400	-0.391	-0.398	-0.471	-0.176	0.022

2008	2009	2010	2011	2012	2013	2014
3.536	3.687	3.345	3.444	3.425	3.691	3.798
1.840	1.810	1.849	2.006	1.976	2.190	2.374
1.369	1.374	1.308	1.311	1.332	1.362	1.346
0.712	0.674	0.723	0.764	0.768	0.808	0.841

2008	2009	2010	2011	2012	2013	2014
1.263	1.305	1.207	1.237	1.231	1.306	1.335
0.610	0.593	0.615	0.696	0.681	0.784	0.865
0.314	0.318	0.268	0.271	0.286	0.309	0.297
-0.339	-0.394	-0.324	-0.269	-0.264	-0.213	-0.173

2008	2009	2010	2011	2012	2013	2014
0.465	0.309	0.309	0.288	0.188	0.295	0.299
0.189	0.170	0.223	0.247	0.281	0.066	-0.077

0	0	0	0	0	0	0
0.263	0.146	0.153	0.170	0.114	0.191	0.181
-0.014	0.006	0.066	0.129	0.208	-0.038	-0.195



List of exporters for the selected product: Product 8708

	2001	2002	2003	2004	2005	2006	2007	2008
CR	1,939,291	2,708,158	3,401,700	4,529,481	5,396,907	6,312,726	8,146,485	9,573,396
Hungary	892,108	1,152,913	1,593,352	1,961,451	2,304,183	2,891,178	3,556,939	3,690,338

List of exporters for all products export, USD, 2001-2014 http://www.trademap.org/tradestat/Country_Sel

	2001	2002	2003	2004	2005	2006	2007	2008
CR	33,384,210	44,263,576	48,720,350	65,771,587	78,208,548	95,140,986	120,900,492	146,087,029
Hungary	30,497,719	34,336,583	43,003,656	55,468,212	62,271,839	74,055,406	94,590,870	108,211,166

List of importers for the selected product: Product 8708

	2001	2002	2003	2004	2005	2006	2007	2008
CR	1,484,515	1,720,666	2,065,420	2,483,467	3,164,902	3,947,483	5,015,058	5,653,605
Hungary	761,282	858,590	1,007,255	1,109,060	1,229,959	1,490,793	2,800,030	2,976,034

List of importers for all products import, USD, 2001-2014

	2001	2002	2003	2004	2005	2006	2007	2008
CR	36,476,654	48,230,794	51,239,343	66,705,682	76,527,310	93,429,474	116,822,197	141,833,836
Hungary	33,681,734	37,611,572	47,674,542	60,248,602	65,919,579	76,978,511	94,659,727	108,784,724

LFI_8708

	2001	2002	2003	2004	2005	2006	2007	2008
CR	0.868	1.273	1.475	1.582	1.382	1.205	1.222	1.283
HUN	0.332	0.536	0.794	0.846	0.916	0.983	0.401	0.337

CA

0

0

0

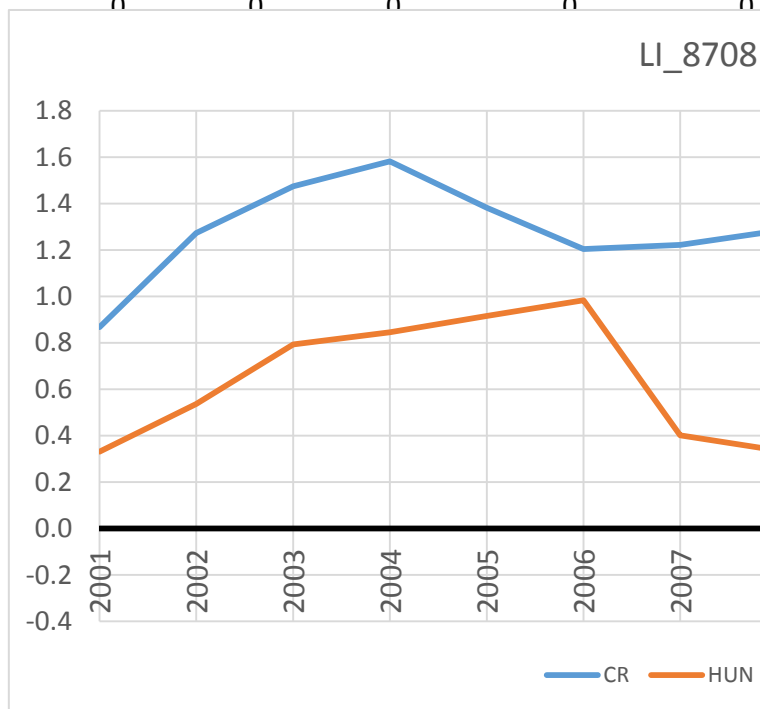
0

0

0

0

0



List of exporters for total export

	2001	2002	2003	2004	2005	2006	2007
CR	33,384,210	44,263,576	48,720,350	65,771,587	78,208,548	95,140,986	120,900,492
Hungary	30,497,719	34,336,583	43,003,656	55,468,212	62,271,839	74,055,406	94,590,870
V4	111,884,993	133,331,478	166,396,472	222,882,761	261,710,590	320,466,752	412,312,348
World	6,114,505,660	6,403,660,225	7,463,286,864	9,086,813,784	10,342,460,927	11,952,387,109	13,772,780,256

List of exporters for the selected product: Product 8701_tractors

	2001	2002	2003	2004	2005	2006	2007
CR	54,573	65,949	93,555	125,366	183,026	235,890	305,067
Hungary	6,694	9,177	11,052	24,011	23,389	45,060	74,163
V4	130,995	143,819	167,057	234,239	345,428	565,409	872,978
World	16,248,865	19,298,769	23,636,730	31,772,599	34,714,895	39,251,419	47,292,203

List of importers for total import

	2001	2002	2003	2004	2005	2006	2007
CR	36,476,654	48,230,794	51,239,343	66,705,682	76,527,310	93,429,474	116,822,197
Hungary	33,681,734	37,611,572	47,674,542	60,248,602	65,919,579	76,978,511	94,659,727
V4	134,375,504	156,736,444	188,660,763	244,565,357	278,211,527	340,811,915	434,862,199
World	6,324,509,730	6,586,827,695	7,682,853,525	9,382,060,863	10,607,834,908	12,245,802,740	14,095,906,118

List of importers for the selected product: Product 8701_tractors

	2001	2002	2003	2004	2005	2006	2007
CR	219,488	253,678	226,375	418,577	482,901	623,318	914,475
Hungary	140,719	184,424	291,784	309,436	274,081	338,069	530,493
V4	641,663	889,072	1,268,314	1,829,143	1,935,331	2,561,763	4,159,282
World	15,180,015	17,566,564	21,139,455	28,046,240	30,623,620	36,027,357	43,353,596

2008	2009	2010	2011	2012	2013	2014
146,087,029	112,884,321	132,140,914	162,391,721	156,422,743	161,524,152	174,279,452
108,211,166	82,571,847	94,748,737	111,216,834	103,006,014	107,729,976	112,196,295
496,346,790	387,650,495	447,953,212	540,200,888	518,899,352	558,286,204	586,928,830
15,972,312,416	12,314,697,361	15,057,105,841	18,066,514,928	18,202,308,765	18,684,466,211	18,686,070,183

2008	2009	2010	2011	2012	2013	2014
348,262	204,526	205,094	274,332	312,115	317,967	313,253
116,692	57,756	97,207	115,552	111,665	104,104	90,604
1,443,633	755,003	854,141	1,234,403	1,251,259	1,311,060	1,236,940
57,072,395	28,951,153	36,816,345	54,295,163	54,519,177	54,410,928	56,326,763

2008	2009	2010	2011	2012	2013	2014
141,833,836	104,849,536	125,690,658	150,813,416	139,726,824	142,525,808	153,225,461
108,784,724	77,272,443	87,432,095	101,369,997	94,266,239	98,661,803	103,110,997
533,708,631	386,851,760	451,632,314	538,065,223	502,282,527	528,096,513	554,377,917
16,352,222,166	12,603,159,274	15,254,895,075	18,238,694,336	18,329,977,181	18,705,114,822	18,729,446,763

2008	2009	2010	2011	2012	2013	2014
949,807	270,685	436,149	730,619	597,285	730,247	907,954
670,811	238,518	172,825	382,269	384,818	478,773	614,493
4,125,539	1,421,368	2,102,005	3,375,571	3,105,837	3,618,261	3,754,663
51,120,903	27,423,333	33,000,268	47,457,859	48,164,549	49,970,911	52,399,221

1,381,625,672

0.040768469

List of exporters for the selected product: Product 8701_tractors

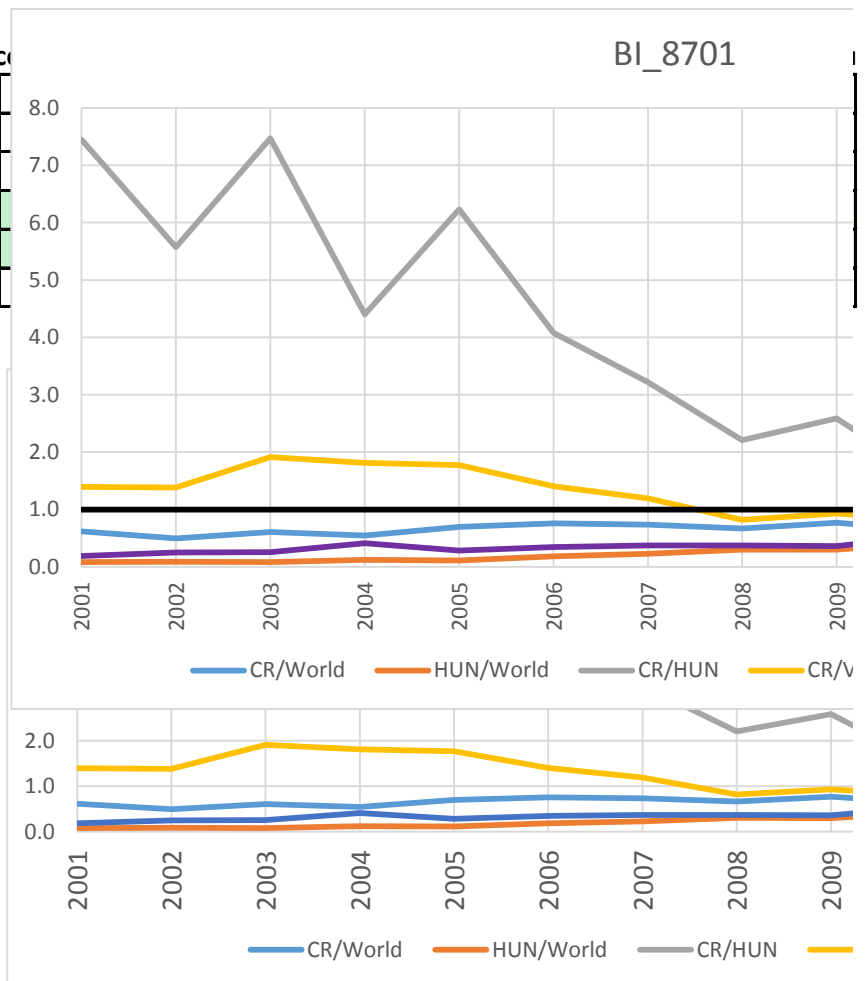
	2001	2002	2003	2004	2005	2006	2007
CR	54,573	65,949	93,555	125,366	183,026	235,890	305,067
Hungary	6,694	9,177	11,052	24,011	23,389	45,060	74,163
V4	130,995	143,819	167,057	234,239	345,428	565,409	872,978
World	16,248,865	19,298,769	23,636,730	31,772,599	34,714,895	39,251,419	47,292,203

List of exporters for total export

	2001	2002	2003	2004	2005	2006	2007
CR	33,384,210	44,263,576	48,720,350	65,771,587	78,208,548	95,140,986	120,900,492
Hungary	30,497,719	34,336,583	43,003,656	55,468,212	62,271,839	74,055,406	94,590,870
V4	111,884,993	133,331,478	166,396,472	222,882,761	261,710,590	320,466,752	412,312,348
World	6,114,505,660	6,403,660,225	7,463,286,864	9,086,813,784	10,342,460,927	11,952,387,109	13,772,780,256

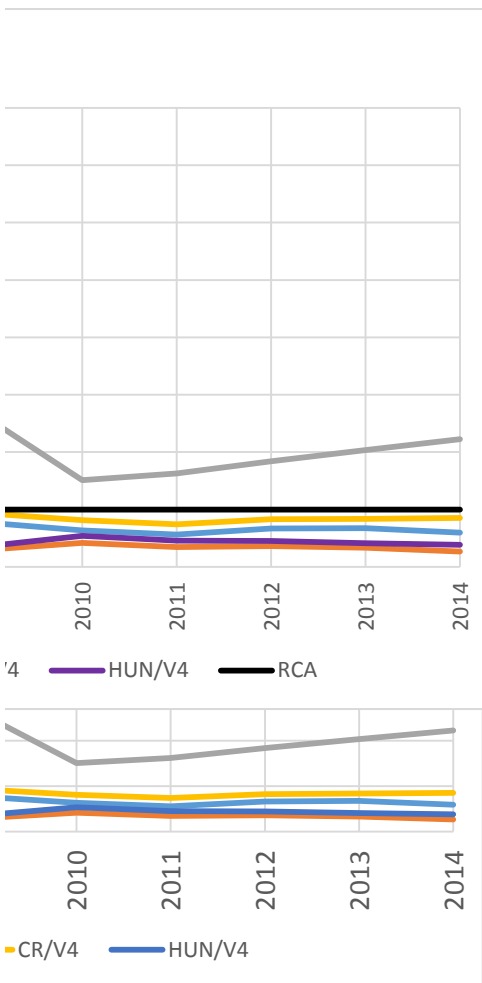
Ballasa_RCA=Export of product from c

	2001	2002
CR/World	0.615	0.494
HUN/Worl	0.083	0.089
CR/HUN	7.448	5.575
CR/V4	1.396	1.381
HUN/V4	0.187	0.248
RCA	1	1



2008	2009	2010	2011	2012	2013	2014
348,262	204,526	205,094	274,332	312,115	317,967	313,253
116,692	57,756	97,207	115,552	111,665	104,104	90,604
1,443,633	755,003	854,141	1,234,403	1,251,259	1,311,060	1,236,940
57,072,395	28,951,153	36,816,345	54,295,163	54,519,177	54,410,928	56,326,763

2008	2009	2010	2011	2012	2013	2014
146,087,029	112,884,321	132,140,914	162,391,721	156,422,743	161,524,152	174,279,452
108,211,166	82,571,847	94,748,737	111,216,834	103,006,014	107,729,976	112,196,295
496,346,790	387,650,495	447,953,212	540,200,888	518,899,352	558,286,204	586,928,830
15,972,312,416	12,314,697,361	15,057,105,841	18,066,514,928	18,202,308,765	18,684,466,211	18,686,070,183



2010	2011	2012	2013	2014
535	0.562	0.666	0.676	0.596
420	0.346	0.362	0.332	0.268
513	1.626	1.841	2.037	2.226
314	0.739	0.827	0.838	0.853
538	0.455	0.450	0.411	0.383
1	1	1	1	1

List of importers for the selected product: Product 8701_tractors

	2001	2002	2003	2004	2005	2006	2007
CR	219,488	253,678	226,375	418,577	482,901	623,318	914,475
Hungary	140,719	184,424	291,784	309,436	274,081	338,069	530,493
V4	641,663	889,072	1,268,314	1,829,143	1,935,331	2,561,763	4,159,282
World	15,180,015	17,566,564	21,139,455	28,046,240	30,623,620	36,027,357	43,353,596

List of importers for total import

	2001	2002	2003	2004	2005	2006	2007
CR	36,476,654	48,230,794	51,239,343	66,705,682	76,527,310	93,429,474	116,822,197
Hungary	33,681,734	37,611,572	47,674,542	60,248,602	65,919,579	76,978,511	94,659,727
V4	134,375,504	156,736,444	188,660,763	244,565,357	278,211,527	340,811,915	434,862,199
World	6,324,509,730	6,586,827,695	7,682,853,525	9,382,060,863	10,607,834,908	12,245,802,740	14,095,906,118

Vollrath_import_RMA=Import of product from countryA/total import from countryA/World_total import of

	2001	2002	2003	2004	2005	2006	2007
CR/World	2.507	1.972	1.606	2.099	2.186	2.268	2.545
HUN/Worl	1.741	1.839	2.224	1.718	1.440	1.493	1.822
CR/V4	1.260	0.927	0.657	0.839	0.907	0.888	0.818
HUN/V4	0.875	0.864	0.910	0.687	0.598	0.584	0.586

In_RMA

	2001	2002	2003	2004	2005	2006	2007
CR/World	0.919	0.679	0.474	0.742	0.782	0.819	0.934
HUN/Worl	0.554	0.609	0.799	0.541	0.365	0.401	0.600
CR/V4	0.231	-0.076	-0.420	-0.176	-0.097	-0.119	-0.200
HUN/V4	-0.134	-0.146	-0.094	-0.376	-0.515	-0.537	-0.535

RXA(RCA)

	2001	2002	2003	2004	2005	2006	2007
CR/World	0.615	0.494	0.606	0.545	0.697	0.755	0.735
HUN/Worl	0.083	0.089	0.081	0.124	0.112	0.185	0.228
CR/V4	1.396	1.381	1.913	1.814	1.773	1.405	1.192
HUN/V4	0.187	0.248	0.256	0.412	0.285	0.345	0.370

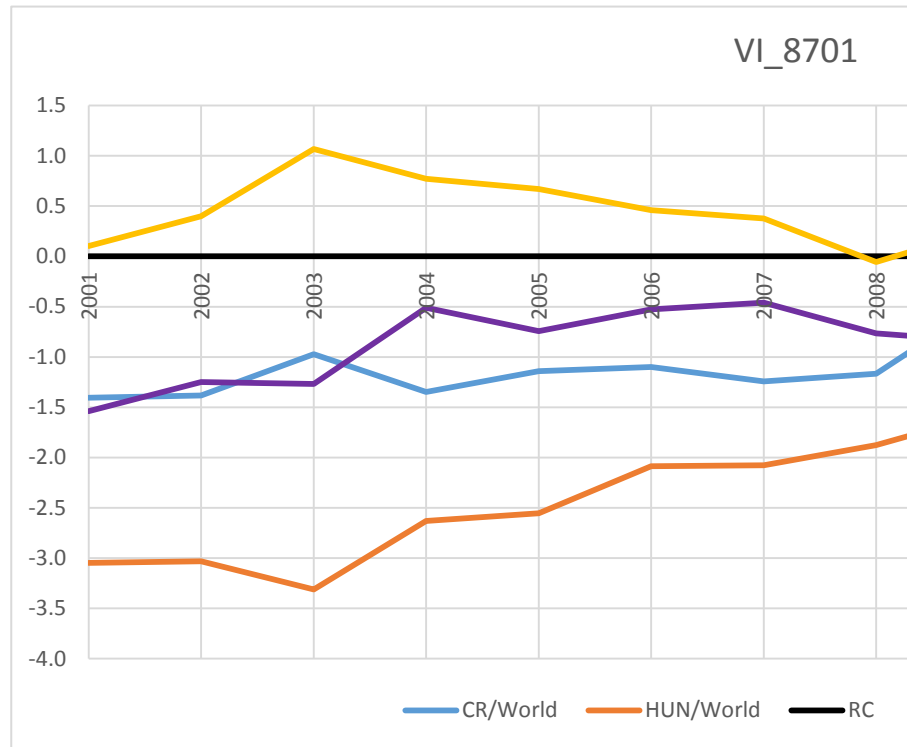
In_RXA(RCA)

	2001	2002	2003	2004	2005	2006	2007
CR/World	-0.486	-0.704	-0.500	-0.607	-0.361	-0.281	-0.308
HUN/Worl	-2.494	-2.423	-2.511	-2.089	-2.190	-1.686	-1.477
CR/V4	0.334	0.323	0.648	0.595	0.573	0.340	0.175
HUN/V4	-1.674	-1.395	-1.363	-0.887	-1.257	-1.065	-0.993

RC = In_RXA - In_RMA

	2001	2002	2003	2004	2005	2006	2007
CR/World	-1.405	-1.384	-0.974	-1.348	-1.143	-1.100	-1.242
HUN/Worl	-3.048	-3.032	-3.311	-2.630	-2.555	-2.087	-2.077

RC	0.000	0.000	0.000	0.000	0.000	0.000	0.000
CR/V4	0.103	0.399	1.068	0.771	0.670	0.460	0.376
HUN/V4	-1.541	-1.250	-1.269	-0.511	-0.742	-0.527	-0.459



2008	2009	2010	2011	2012	2013	2014
949,807	270,685	436,149	730,619	597,285	730,247	907,954
670,811	238,518	172,825	382,269	384,818	478,773	614,493
4,125,539	1,421,368	2,102,005	3,375,571	3,105,837	3,618,261	3,754,663
51,120,903	27,423,333	33,000,268	47,457,859	48,164,549	49,970,911	52,399,221

2008	2009	2010	2011	2012	2013	2014
141,833,836	104,849,536	125,690,658	150,813,416	139,726,824	142,525,808	153,225,461
108,784,724	77,272,443	87,432,095	101,369,997	94,266,239	98,661,803	103,110,997
533,708,631	386,851,760	451,632,314	538,065,223	502,282,527	528,096,513	554,377,917
16,352,222,166	12,603,159,274	15,254,895,075	18,238,694,336	18,329,977,181	18,705,114,822	18,729,446,763

f the product/world_total import

2008	2009	2010	2011	2012	2013	2014
2.142	1.186	1.604	1.862	1.627	1.918	2.118
1.972	1.419	0.914	1.449	1.554	1.816	2.130
0.866	0.703	0.746	0.772	0.691	0.748	0.875
0.798	0.840	0.425	0.601	0.660	0.708	0.880

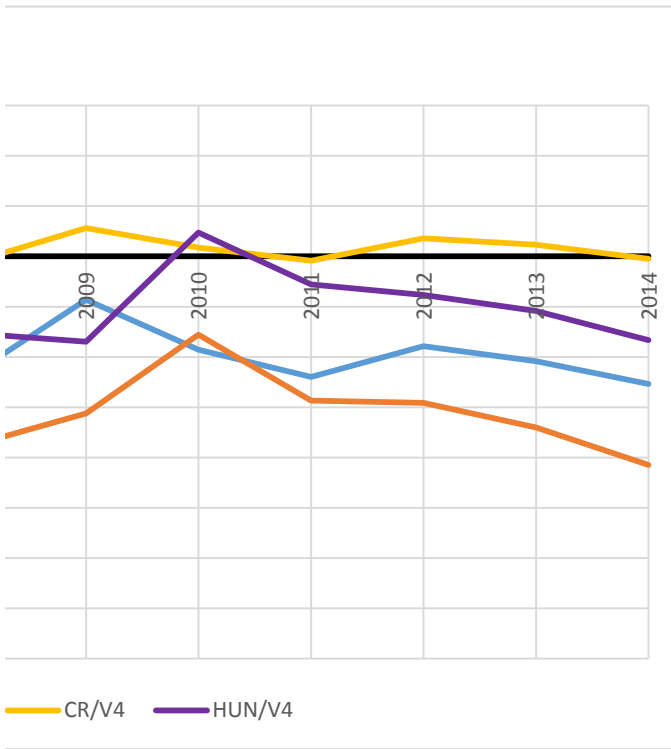
2008	2009	2010	2011	2012	2013	2014
0.762	0.171	0.473	0.622	0.487	0.651	0.750
0.679	0.350	-0.090	0.371	0.441	0.597	0.756
-0.143	-0.353	-0.294	-0.258	-0.369	-0.291	-0.134
-0.226	-0.174	-0.856	-0.509	-0.415	-0.345	-0.128

2008	2009	2010	2011	2012	2013	2014
0.667	0.771	0.635	0.562	0.666	0.676	0.596
0.302	0.298	0.420	0.346	0.362	0.332	0.268
0.820	0.930	0.814	0.739	0.827	0.838	0.853
0.371	0.359	0.538	0.455	0.450	0.411	0.383

2008	2009	2010	2011	2012	2013	2014
-0.405	-0.260	-0.454	-0.576	-0.406	-0.392	-0.517
-1.198	-1.212	-0.868	-1.062	-1.016	-1.103	-1.317
-0.199	-0.072	-0.206	-0.302	-0.189	-0.176	-0.159
-0.992	-1.024	-0.620	-0.788	-0.799	-0.888	-0.959

2008	2009	2010	2011	2012	2013	2014
-1.166	-0.431	-0.927	-1.198	-0.893	-1.043	-1.268
-1.877	-1.562	-0.778	-1.433	-1.457	-1.700	-2.073

0.000	0.000	0.000	0.000	0.000	0.000	0.000
-0.055	0.281	0.088	-0.044	0.180	0.114	-0.026
-0.766	-0.850	0.237	-0.279	-0.384	-0.543	-0.831



List of exporters for the selected product: Product 8701

	2001	2002	2003	2004	2005	2006	2007	2008
CR	54,573	65,949	93,555	125,366	183,026	235,890	305,067	348,262
Hungary	6,694	9,177	11,052	24,011	23,389	45,060	74,163	116,692

List of exporters for all products export, USD, 2001-2014 http://www.trademap.org/tradestat/Country_Sel

	2001	2002	2003	2004	2005	2006	2007	2008
CR	33,384,210	44,263,576	48,720,350	65,771,587	78,208,548	95,140,986	120,900,492	146,087,029
Hungary	30,497,719	34,336,583	43,003,656	55,468,212	62,271,839	74,055,406	94,590,870	108,211,166

List of importers for the selected product: Product 8701

	2001	2002	2003	2004	2005	2006	2007	2008
CR	219,488	253,678	226,375	418,577	482,901	623,318	914,475	949,807
Hungary	140,719	184,424	291,784	309,436	274,081	338,069	530,493	670,811

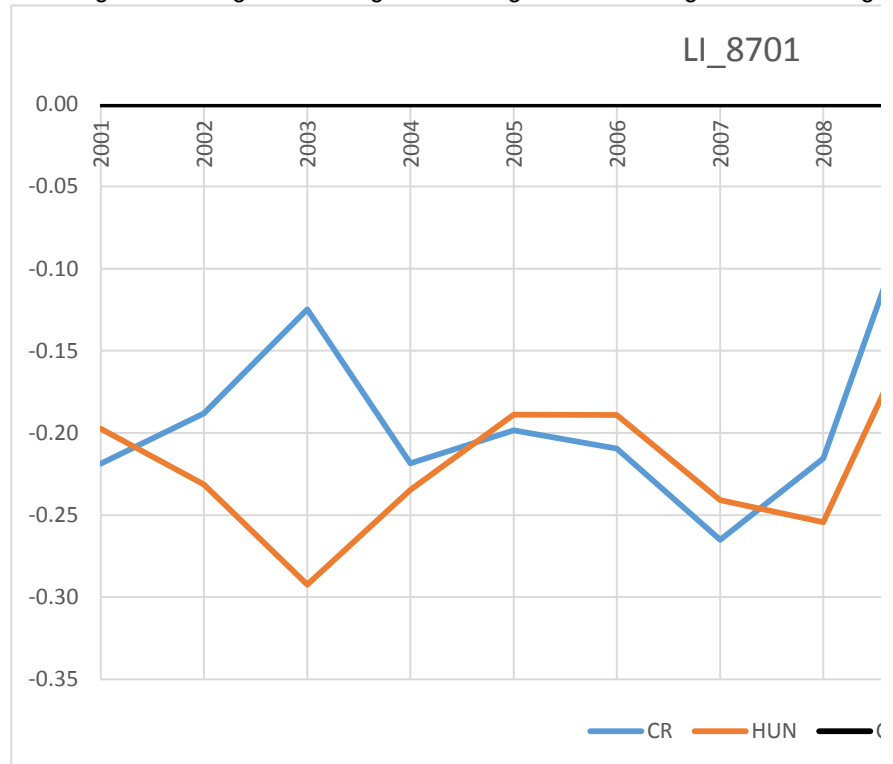
List of importers for all products import, USD, 2001-2014

	2001	2002	2003	2004	2005	2006	2007	2008
CR	36,476,654	48,230,794	51,239,343	66,705,682	76,527,310	93,429,474	116,822,197	141,833,836
Hungary	33,681,734	37,611,572	47,674,542	60,248,602	65,919,579	76,978,511	94,659,727	108,784,724

LF1_8701

	2001	2002	2003	2004	2005	2006	2007	2008
CR	-0.219	-0.188	-0.125	-0.218	-0.198	-0.210	-0.265	-0.216
HUN	-0.197	-0.231	-0.292	-0.235	-0.189	-0.189	-0.241	-0.254

CA 0 0 0 0 0 0 0 0 0



2009	2010	2011	2012	2013	2014
204,526	205,094	274,332	312,115	317,967	313,253
57,756	97,207	115,552	111,665	104,104	90,604

Product_TS.aspx

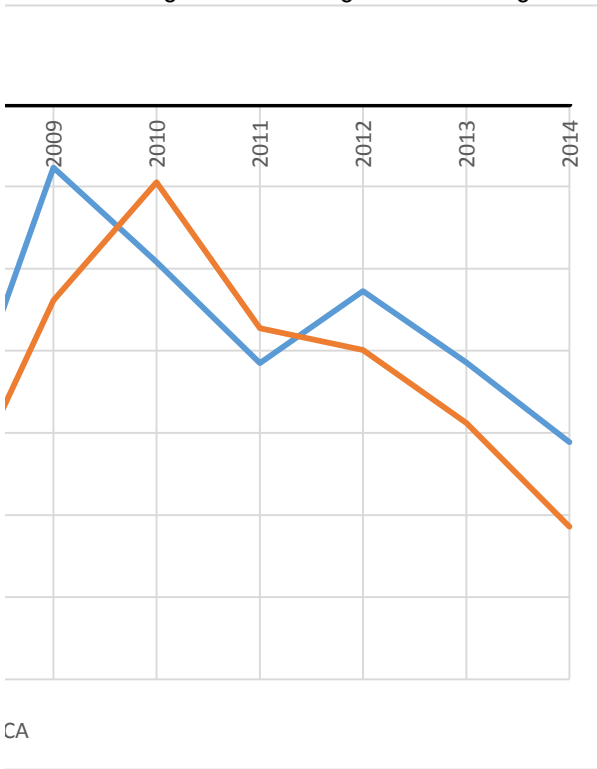
2009	2010	2011	2012	2013	2014
112,884,321	132,140,914	162,391,721	156,422,743	161,524,152	174,279,452
82,571,847	94,748,737	111,216,834	103,006,014	107,729,976	112,196,295

2009	2010	2011	2012	2013	2014
270,685	436,149	730,619	597,285	730,247	907,954
238,518	172,825	382,269	384,818	478,773	614,493

2009	2010	2011	2012	2013	2014
104,849,536	125,690,658	150,813,416	139,726,824	142,525,808	153,225,461
77,272,443	87,432,095	101,369,997	94,266,239	98,661,803	103,110,997

2009	2010	2011	2012	2013	2014
-0.038	-0.096	-0.158	-0.114	-0.157	-0.206
-0.119	-0.047	-0.136	-0.150	-0.194	-0.257

0 0 0 0 0 0



CA

List of exporters for the selected product: Product 8702_public_transport

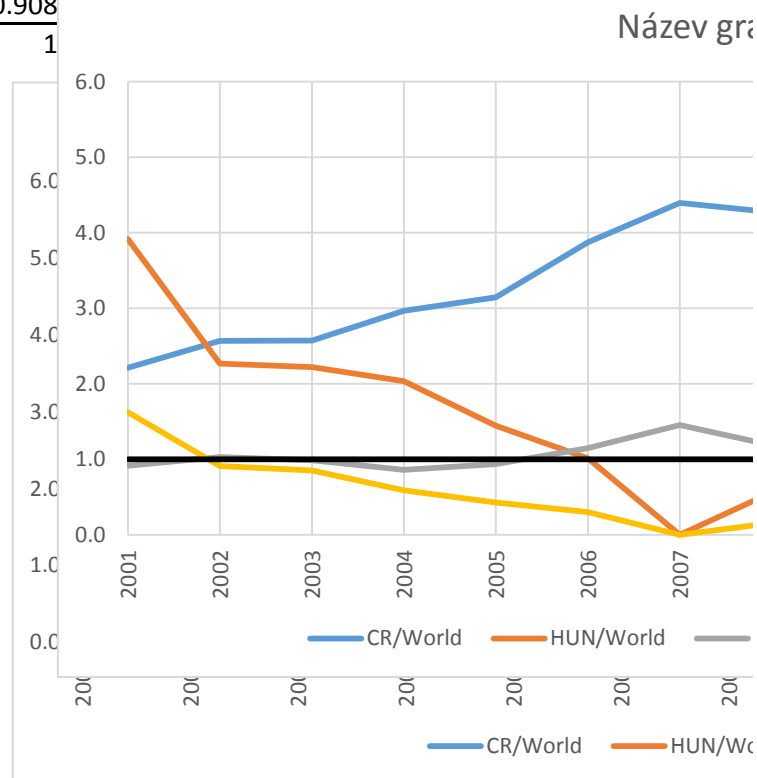
	2001	2002	2003	2004	2005	2006
CR	72,317	105,655	124,287	190,385	230,750	326,809
Hungary	117,089	72,319	94,602	110,099	84,341	66,409
V4	264,643	309,173	430,260	750,296	827,510	961,269
World	5,994,654	5,955,935	7,401,193	8,864,633	9,702,825	10,603,964

List of exporters for total export

	2001	2002	2003	2004	2005	2006
CR	33,384,210	44,263,576	48,720,350	65,771,587	78,208,548	95,140,986
Hungary	30,497,719	34,336,583	43,003,656	55,468,212	62,271,839	74,055,406
V4	111,884,993	133,331,478	166,396,472	222,882,761	261,710,590	320,466,752
World	6,114,505,660	6,403,660,225	7,463,286,864	9,086,813,784	10,342,460,927	11,952,387,109

Ballasa_RCA=Export of product from countryA/total export from countryA/World_total export

	2001	2002	2003	2004	2005	2006
CR/World	2.210	2.566	2.572	2.967	3.145	3.872
HUN/Worl	3.916	2.265	2.218	2.035	1.444	1.011
CR/HUN	0.564	1.133	1.160	1.458	2.178	3.831
CR/V4	0.916	1.029	0.987	0.860	0.933	1.145
HUN/V4	1.623	0.908				
RCA	1	1				



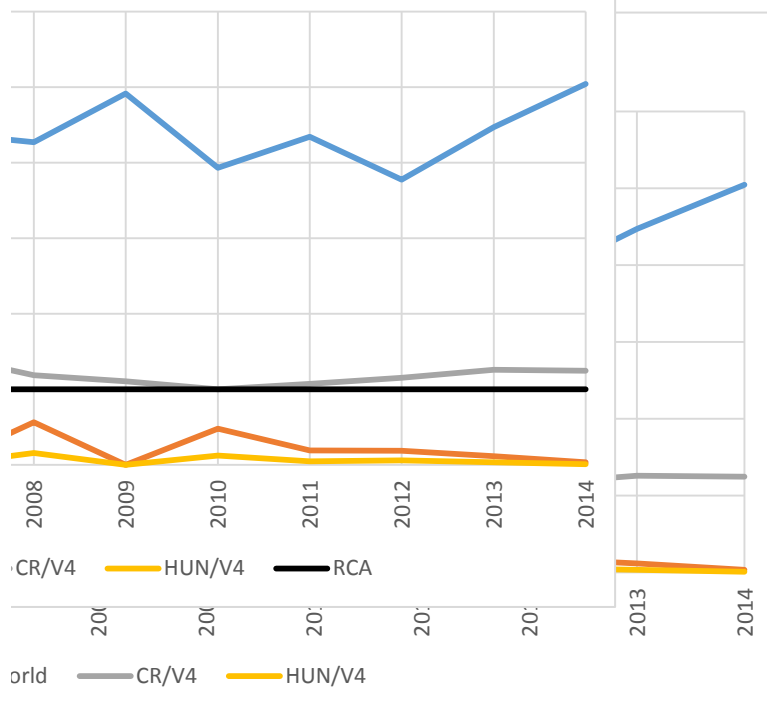
2007	2008	2009	2010	2011	2012
509,984	660,448	543,365	442,272	572,228	496,369
0	64,181	0	38,564	17,013	15,836
1,197,420	1,890,651	1,691,159	1,502,389	1,777,072	1,431,985
13,222,214	16,905,878	12,057,527	12,817,987	14,654,171	15,303,021

2007	2008	2009	2010	2011	2012
120,900,492	146,087,029	112,884,321	132,140,914	162,391,721	156,422,743
94,590,870	108,211,166	82,571,847	94,748,737	111,216,834	103,006,014
412,312,348	496,346,790	387,650,495	447,953,212	540,200,888	518,899,352
13,772,780,256	15,972,312,416	12,314,697,361	15,057,105,841	18,066,514,928	18,202,308,765

of the product/world_total export

2007	2008	2009	2010	2011	2012
4.394	4.271	4.916	3.932	4.344	3.774
0.000	0.560	0.000	0.478	0.189	0.183
0.000	7.622	0.000	8.223	23.035	20.641
1.452	1.187	1.103	0.998	1.071	1.150
0.000	0.121	0.047	0.056		

afu



2013	2014	1,381,625,672
607,039	779,493	0.0119913
10,358	3,039	
1,667,337	2,107,131	
15,705,698	16,567,473	

2013	2014
161,524,152	174,279,452
107,729,976	112,196,295
558,286,204	586,928,830
18,684,466,211	18,686,070,183

2013	2014
4.471	5.045
0.114	0.031
39.088	165.125
1.258	1.246
0.032	0.008
1	1

8702_import

	2001	2002	2003	2004	2005	2006	2007
CR	49,888	46,957	57,637	79,919	75,181	87,491	114,675
Hungary	30,232	50,291	52,912	68,442	69,797	92,919	0
V4	167,178	186,827	184,975	273,781	290,683	367,578	317,456
World	6,152,223	6,324,589	7,196,224	8,964,787	10,317,157	11,305,466	14,421,963

List of importers for total import

	2001	2002	2003	2004	2005	2006	2007
CR	36,476,654	48,230,794	51,239,343	66,705,682	76,527,310	93,429,474	116,822,197
Hungary	33,681,734	37,611,572	47,674,542	60,248,602	65,919,579	76,978,511	94,659,727
V4	134,375,504	156,736,444	188,660,763	244,565,357	278,211,527	340,811,915	434,862,199
World	6,324,509,730	6,586,827,695	7,682,853,525	9,382,060,863	10,607,834,908	12,245,802,740	14,095,906,118

Vollrath_import_RMA=Import of product from countryA/total import from countryA/World_total import of

	2001	2002	2003	2004	2005	2006	2007
CR/World	1.406	1.014	1.201	1.254	1.010	1.014	0.959
HUN/Worl	0.923	1.393	1.185	1.189	1.089	1.307	0.000
CR/V4	1.099	0.817	1.147	1.070	0.940	0.868	1.345
HUN/V4	0.721	1.122	1.132	1.015	1.013	1.119	0.000

In_RMA

	2001	2002	2003	2004	2005	2006	2007
CR/World	0.341	0.014	0.183	0.226	0.010	0.014	-0.041
HUN/Worl	-0.080	0.331	0.170	0.173	0.085	0.268	0.000
CR/V4	0.095	-0.202	0.137	0.068	-0.062	-0.141	0.296
HUN/V4	-0.326	0.115	0.124	0.015	0.013	0.113	0.000

RXA(RCA)

	2001	2002	2003	2004	2005	2006	2007
CR/World	2.210	2.566	2.572	2.967	3.145	3.872	4.394
HUN/Worl	3.916	2.265	2.218	2.035	1.444	1.011	0.000
CR/V4	0.916	1.029	0.987	0.860	0.933	1.145	1.452
HUN/V4	1.623	0.908	0.851	0.590	0.428	0.299	0.000

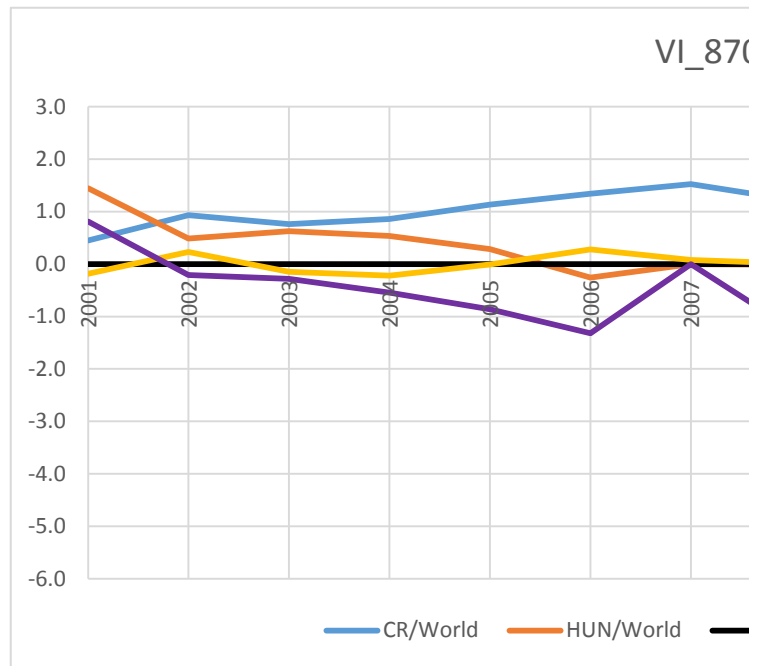
In_RXA(RCA)

	2001	2002	2003	2004	2005	2006	2007
CR/World	0.793	0.942	0.945	1.088	1.146	1.354	1.480
HUN/Worl	1.365	0.817	0.797	0.710	0.367	0.011	0.000
CR/V4	-0.088	0.029	-0.014	-0.151	-0.069	0.136	0.373
HUN/V4	0.484	-0.096	-0.162	-0.528	-0.848	-1.207	0.000

RC = In_RXA - In_RMA

	2001	2002	2003	2004	2005	2006	2007
CR/World	0.452	0.929	0.762	0.861	1.136	1.339	1.522
HUN/Worl	1.446	0.486	0.627	0.537	0.282	-0.257	0.000

RC	0.000	0.000	0.000	0.000	0.000	0.000	0.000
CR/V4	-0.183	0.231	-0.151	-0.219	-0.008	0.277	0.077
HUN/V4	0.811	-0.211	-0.286	-0.543	-0.861	-1.320	0.000



2008	2009	2010	2011	2012	2013	2014
184,139	105,355	51,311	59,915	80,993	107,707	127,329
63,993	46,345	10,997	18,023	10,959	78,541	103,306
588,523	422,387	256,571	275,427	284,029	385,269	489,371
16,885,632	13,622,253	13,916,550	15,658,206	15,380,296	15,938,365	16,386,153

2008	2009	2010	2011	2012	2013	2014
141,833,836	104,849,536	125,690,658	150,813,416	139,726,824	142,525,808	153,225,461
108,784,724	77,272,443	87,432,095	101,369,997	94,266,239	98,661,803	103,110,997
533,708,631	386,851,760	451,632,314	538,065,223	502,282,527	528,096,513	554,377,917
16,352,222,166	12,603,159,274	15,254,895,075	18,238,694,336	18,329,977,181	18,705,114,822	18,729,446,763

f the product/world_total import

2008	2009	2010	2011	2012	2013	2014
1.257	0.930	0.447	0.463	0.691	0.887	0.950
0.570	0.555	0.138	0.207	0.139	0.934	1.145
1.177	0.920	0.719	0.776	1.025	1.036	0.941
0.533	0.549	0.221	0.347	0.206	1.091	1.135

2008	2009	2010	2011	2012	2013	2014
0.229	-0.073	-0.804	-0.771	-0.370	-0.120	-0.051
-0.563	-0.589	-1.981	-1.575	-1.977	-0.068	0.136
0.163	-0.083	-0.330	-0.253	0.025	0.035	-0.060
-0.628	-0.599	-1.508	-1.057	-1.582	0.087	0.127

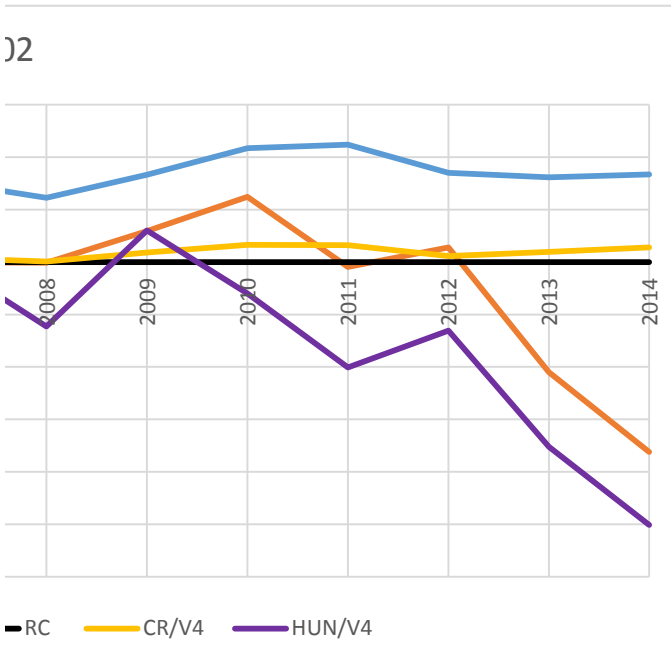
2008	2009	2010	2011	2012	2013	2014
4.271	4.916	3.932	4.344	3.774	4.471	5.045
0.560	0.000	0.478	0.189	0.183	0.114	0.031
1.187	1.103	0.998	1.071	1.150	1.258	1.246
0.156	0.000	0.121	0.047	0.056	0.032	0.008

2008	2009	2010	2011	2012	2013	2014
1.452	1.593	1.369	1.469	1.328	1.498	1.618
-0.579	0.000	-0.738	-1.668	-1.699	-2.168	-3.488
0.171	0.098	-0.002	0.069	0.140	0.230	0.220
-1.860	0.000	-2.109	-3.068	-2.888	-3.436	-4.887

2008	2009	2010	2011	2012	2013	2014
1.223	1.665	2.173	2.239	1.698	1.618	1.670
-0.016	0.589	1.244	-0.094	0.278	-2.100	-3.624

0.000	0.000	0.000	0.000	0.000	0.000	0.000
0.008	0.181	0.328	0.322	0.115	0.195	0.280
-1.231	0.599	-0.601	-2.011	-1.306	-3.523	-5.014

02



List of exporters for the selected product: Product 8702

	2001	2002	2003	2004	2005	2006	2007	2008
CR	72,317	105,655	124,287	190,385	230,750	326,809	509,984	660,448
Hungary	117,089	72,319	94,602	110,099	84,341	66,409	0	64,181

List of exporters for all products export, USD, 2001-2014_ http://www.trademap.org/tradestat/Country_SelPr

	2001	2002	2003	2004	2005	2006	2007	2008
CR	33,384,210	44,263,576	48,720,350	65,771,587	78,208,548	95,140,986	120,900,492	146,087,029
Hungary	30,497,719	34,336,583	43,003,656	55,468,212	62,271,839	74,055,406	94,590,870	108,211,166

List of importers for the selected product: Product 8702

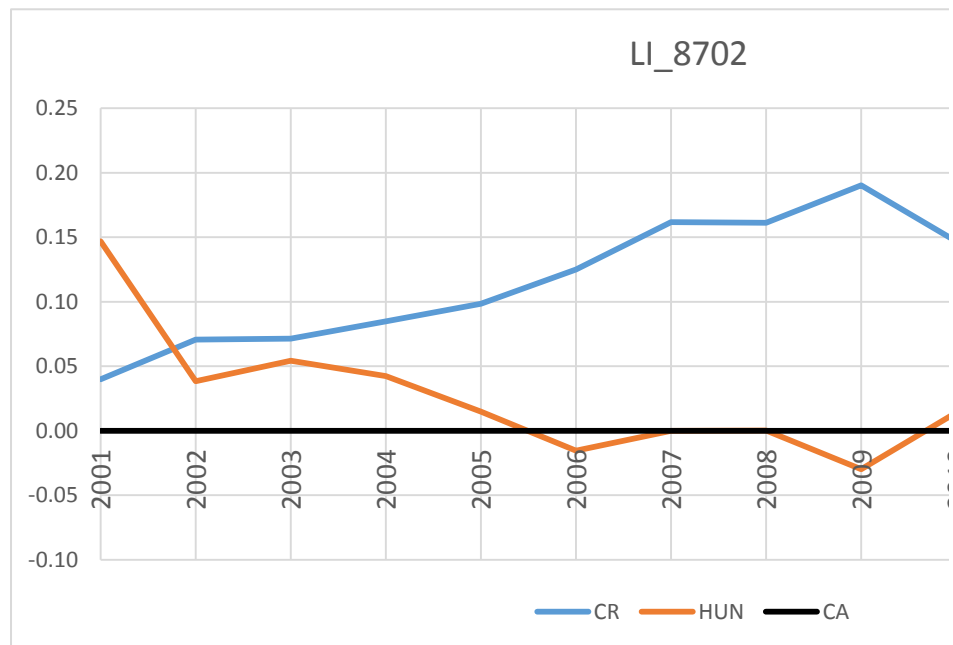
	2001	2002	2003	2004	2005	2006	2007	2008
CR	49,888	46,957	57,637	79,919	75,181	87,491	114,675	184,139
Hungary	30,232	50,291	52,912	68,442	69,797	92,919	0	63,993

List of importers for all products import, USD, 2001-2014

	2001	2002	2003	2004	2005	2006	2007	2008
CR	36,476,654	48,230,794	51,239,343	66,705,682	76,527,310	93,429,474	116,822,197	141,833,836
Hungary	33,681,734	37,611,572	47,674,542	60,248,602	65,919,579	76,978,511	94,659,727	108,784,724

LFI_8702

	2001	2002	2003	2004	2005	2006	2007	2008
CR	0.040	0.071	0.071	0.085	0.098	0.125	0.162	0.161
HUN	0.147	0.038	0.054	0.042	0.015	-0.016	0.000	0.000
CA	0	0	0	0	0	0	0	0



2009	2010	2011	2012	2013	2014
543,365	442,272	572,228	496,369	607,039	779,493
0	38,564	17,013	15,836	10,358	3,039

oduct_TS.aspx

2009	2010	2011	2012	2013	2014
112,884,321	132,140,914	162,391,721	156,422,743	161,524,152	174,279,452
82,571,847	94,748,737	111,216,834	103,006,014	107,729,976	112,196,295

2009	2010	2011	2012	2013	2014
105,355	51,311	59,915	80,993	107,707	127,329
46,345	10,997	18,023	10,959	78,541	103,306

2009	2010	2011	2012	2013	2014
104,849,536	125,690,658	150,813,416	139,726,824	142,525,808	153,225,461
77,272,443	87,432,095	101,369,997	94,266,239	98,661,803	103,110,997

2009	2010	2011	2012	2013	2014
0.190	0.147	0.156	0.129	0.150	0.181
-0.030	0.014	-0.001	0.002	-0.035	-0.049
0	0	0	0	0	0

