

Target	300		
Number of Evaluation	#NÁZEV?		
Number of Wins (Winner)	9	green sheets+ orange	
%	#NÁZEV?		
Taget of training	80%		240
Target of examine	20%		60
Season 2022/23			
Competitions			
Chinese Superleague			
Swedish Allsvenskan			

Number of Wins (Goals Scored)	...
%	#####

#	Team	Pl	W	D	L	F	A	GD	Pts
1	Wuhan Three Towns	10	9	1	0	33	6	27	28
2	Shandong Luneng	10	8	0	2	19	8	11	24
3	Henan Jianye	10	7	2	1	23	9	14	23
4	Shanghai Shenhua	10	6	3	1	17	10	7	21
5	Beijing Guoan	10	4	4	2	15	11	4	16
6	Shanghai SIPG	10	5	1	4	10	9	1	16
7	Shenzen	10	5	1	4	15	15	0	16
8	Hangzhou Greentown	10	4	3	3	13	9	4	15
9	Tianjin Teda	10	4	2	4	14	11	3	14
10	Meizhou Hakka	10	3	5	2	12	9	3	14
11	Wuhan Zall	10	4	1	5	11	18	-7	13
12	Chengdu Rongcheng	10	2	6	2	10	11	-1	12
13	Changchun Yatai	10	2	5	3	14	18	-4	11
14	Dalian Yifang	10	1	4	5	10	19	-9	7
15	Shijiazhuang Ever Bright	10	1	4	5	7	16	-9	7
16	Guangzhou Evergrande	10	2	0	8	5	16	-11	6
17	Guangzhou R&F	10	1	0	9	8	24	-16	3
18	Hebei China Fortune FC	10	1	0	9	5	22	-17	3

13.38888889 13.38888889

<https://www.skysports.com/chinese-super-league-table>

Last 6

avg scored	avg against	w%
3.3	0.6	93.33%
1.9	0.8	80.00%
2.3	0.9	76.67%
1.7	1	70.00%
1.5	1.1	53.33%
1	0.9	53.33%
1.5	1.5	53.33%
1.3	0.9	50.00%
1.4	1.1	46.67%
1.2	0.9	46.67%
1.1	1.8	43.33%
1	1.1	40.00%
1.4	1.8	36.67%
1	1.9	23.33%
0.7	1.6	23.33%
0.5	1.6	20.00%
0.8	2.4	10.00%
0.5	2.2	10.00%

1.338889 1.338889

Column1	2	Team	P	W	D	L	F	A	GD	Pts
1	team hasn't moved	BK Häcken	13	8	4	1	27	18	9	28
2	team hasn't moved	Djurgårdens IF	14	8	3	3	28	10	18	27
3	team hasn't moved	AIK	14	7	4	3	20	17	3	25
4	team hasn't moved	Hammarby IF	13	7	3	3	24	11	13	24
5	team hasn't moved	Malmö FF	14	7	3	4	17	12	5	24
6	team hasn't moved	Kalmar FF	13	6	3	4	16	11	5	21
7	team hasn't moved	IF Elfsborg	13	5	5	3	26	15	11	20
8	team hasn't moved	IFK Göteborg	13	6	2	5	15	14	1	20
9	team hasn't moved	Mjällby AIF	13	5	4	4	13	12	1	19
10	team hasn't moved	IK Sirius	13	5	3	5	15	20	-5	18
11	team hasn't moved	IFK Norrköping	13	4	4	5	16	15	1	16
12	team hasn't moved	Varbergs BoIS	13	4	2	7	11	22	-11	14
13	team hasn't moved	IFK Värnamo	13	3	4	6	12	17	-5	13
14	team hasn't moved	GIF Sundsvall	13	3	1	9	14	31	-17	10
15	team hasn't moved	Degerfors IF	13	2	2	9	10	27	-17	8
16	team hasn't moved	Helsingborgs IF	14	1	3	10	11	23	-12	6

17 17

<https://www.bbc.com/sport/football/swedish-allsvenskan/table>

avg scored avg against w%

2.076923	1.384615	71.79%
2	0.714286	64.29%
1.428571	1.214286	59.52%
1.846154	0.846154	61.54%
1.214286	0.857143	57.14%
1.230769	0.846154	53.85%
2	1.153846	51.28%
1.153846	1.076923	51.28%
1	0.923077	48.72%
1.153846	1.538462	46.15%
1.230769	1.153846	41.03%
0.846154	1.692308	35.90%
0.923077	1.307692	33.33%
1.076923	2.384615	25.64%
0.769231	2.076923	20.51%
0.785714	1.642857	14.29%

1.296016 1.300824

TESTER

4/2/2023 7:48

HgA	1.792560
AgA	1.253824

	0	1	2	3
H	0.166533	0.298521	0.267558	0.159871
A	0.285411	0.357856	0.224344	0.093763

		HG			
		0	1	2	3
AG	0	4.75%	8.52%	7.64%	4.56%
	1	5.96%	10.68%	9.57%	5.72%
	2	3.74%	6.70%	6.00%	3.59%
	3	1.56%	2.80%	2.51%	1.50%
	4	0.49%	0.88%	0.79%	0.47%
	5	0.12%	0.22%	0.20%	0.12%

Total check	98.80%
-------------	--------

Transfer to 100%	
HW%	49.63%
Draw%	23.45%
AW%	26.92%

0.5-	4.75%	4.81%
0.5+	94.04%	95.19%
1.5+	79.56%	80.53%
2.5+	57.51%	58.21%
3.5+	35.11%	35.54%
4.5+	18.06%	18.28%

4	5
0.071645	0.025686
0.02939	0.00737

4	5
2.04%	0.73%
2.56%	0.92%
1.61%	0.58%
0.67%	0.24%
0.21%	0.08%
0.05%	0.02%

HAS	0.97
HxG	1.490
LxGHT	1.536
HDS	1.04
HxGA	1.420
LxGAHT	1.365
AAS	0.88
AxG	1.200
LxGAT	1.364
ADS	1.2
AxGA	1.830
LxGAAT	1.525
LAAG	1.370
LAHG	1.540

6/15/2022 11:35

HgA	1.778889
AgA	0.000000

	0	1	2
H	0.168826	0.300322	0.26712
A	1	0	0

		0	1	H 2
AG	0	16.88%	30.03%	26.71%
	1	0.00%	0.00%	0.00%
	2	0.00%	0.00%	0.00%
	3	0.00%	0.00%	0.00%
	4	0.00%	0.00%	0.00%
	5	0.00%	0.00%	0.00%

Total check 99.02%

Transfer to 100%

HW%	82.13%	82.95%
Draw%	16.88%	17.05%
AW%	0.00%	0.00%

0.5-	16.88%	17.05%
0.5+	82.13%	82.95%
1.5+	52.10%	52.62%
2.5+	25.39%	25.64%
3.5+	9.55%	9.65%
4.5+	2.51%	2.53%



Shanghai Port

15.06.2022 11:30

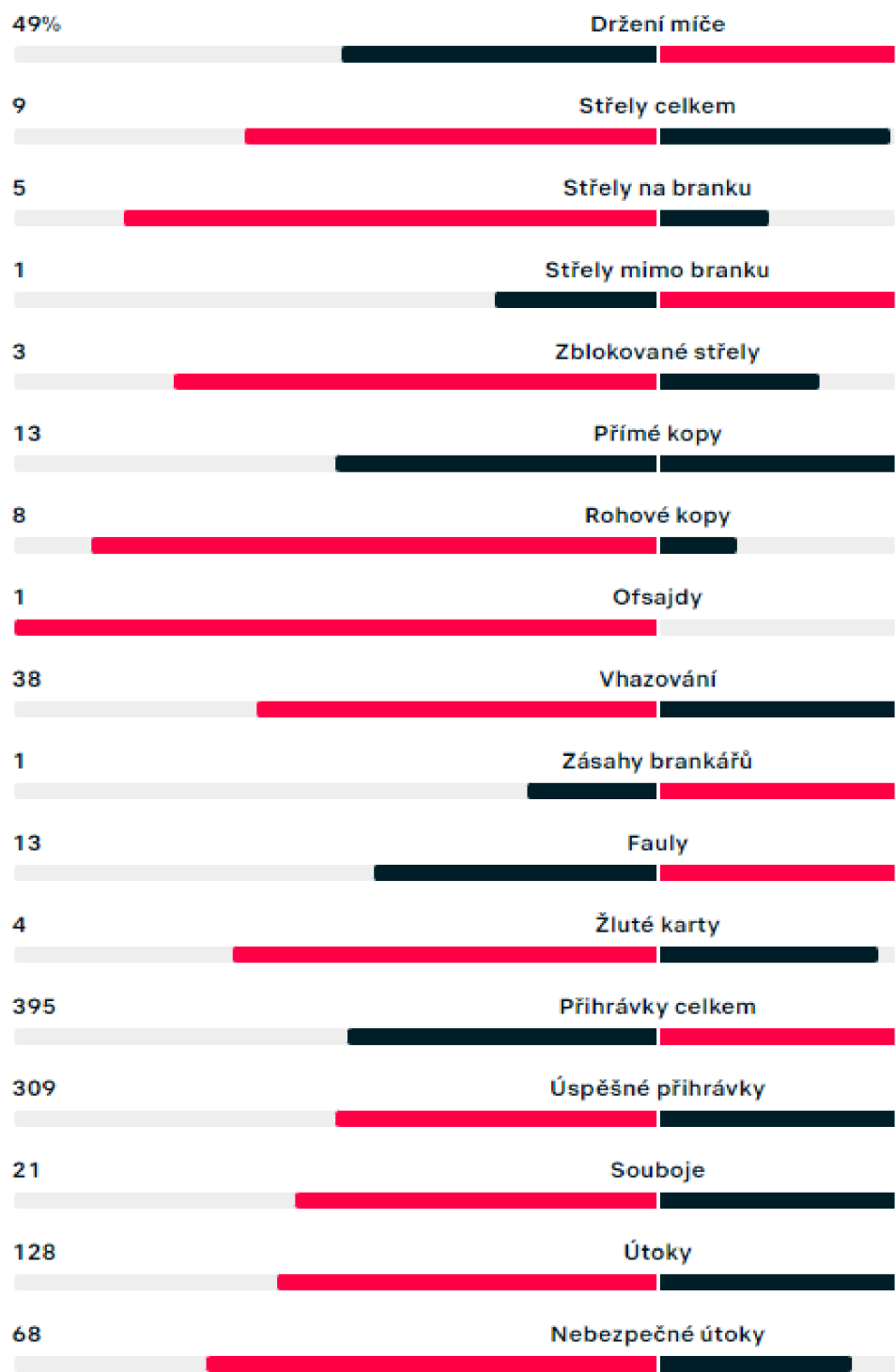
1-0

KONEC

ZÁPAS
KURZY
H2H
TABULKA

PŘEHLED ZÁPASU
STATISTIKY
SESTAVY


ZÁPAS
1. POLOČAS
2. POLOČAS



3	4	5
0.158392	0.070441	0.025061
0	0	0

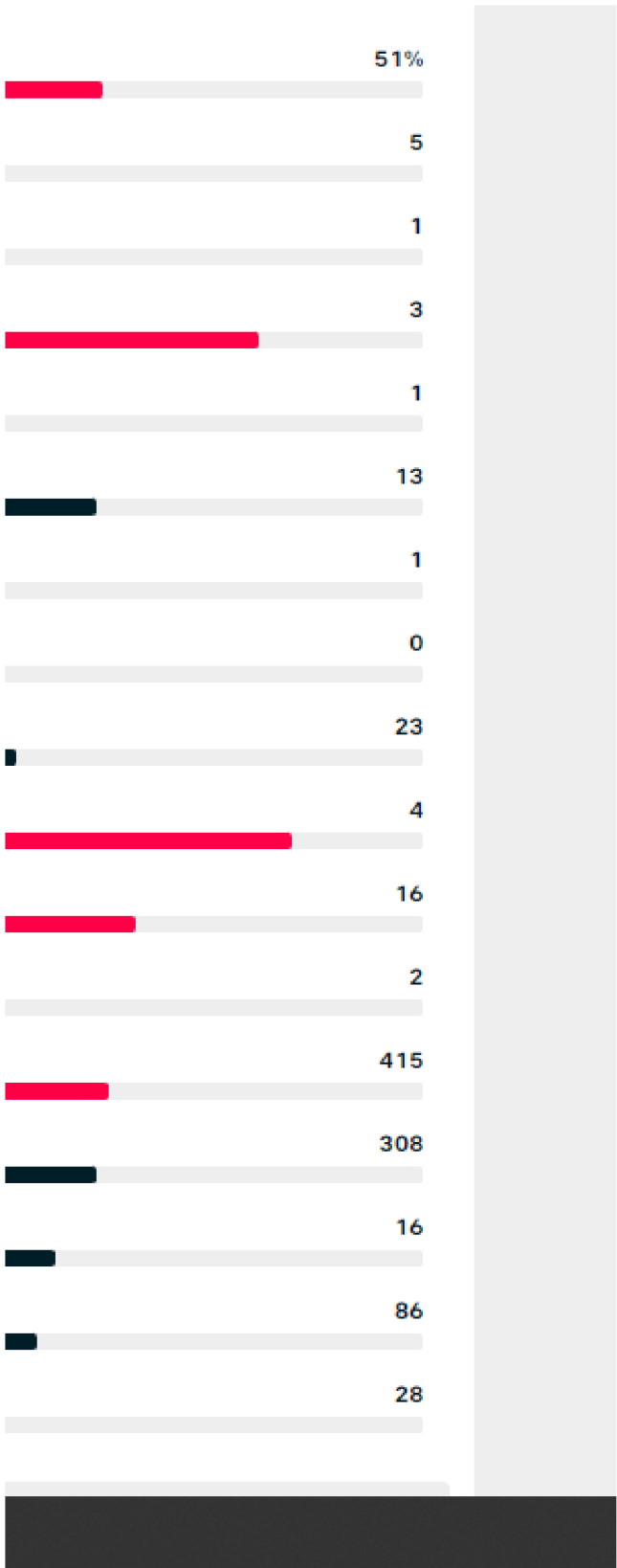
G	3	4	5
	15.84%	7.04%	2.51%
	0.00%	0.00%	0.00%
	0.00%	0.00%	0.00%
	0.00%	0.00%	0.00%
	0.00%	0.00%	0.00%
	0.00%	0.00%	0.00%

HAS	0.667	
HxG	0.667	3G avg
LxGHT	1.000	
HDS	1	
HxGA	1.000	3G avg
LxGAHT	1.000	
AAS	0	
AxG	0.000	3G avg
LxGAT	1.000	
ADS	2.667	
AxGA	2.667	3G avg
LxGAAT	1.000	
LAAG	1.000	
LAHG	1.000	



★

Guangzhou FC



6/24/2022 12:21

HgA	0.568720
AgA	2.211690

	0	1	2
H	0.56625	0.322038	0.091575
A	0.109515	0.242214	0.267851


		0	1	H 2
AG	0	6.20%	3.53%	1.00%
	1	13.72%	7.80%	2.22%
	2	15.17%	8.63%	2.45%
	3	11.18%	6.36%	1.81%
	4	6.18%	3.52%	1.00%
	5	2.73%	1.56%	0.44%

Total check 97.45%

		Transfer to 100%
HW%	8.05%	8.26%
Draw%	16.83%	17.27%
AW%	72.57%	74.47%

0.5-	6.20%	6.36%
0.5+	91.25%	93.64%
1.5+	74.01%	75.94%
2.5+	50.04%	51.35%
3.5+	27.82%	28.55%
4.5+	12.38%	12.70%

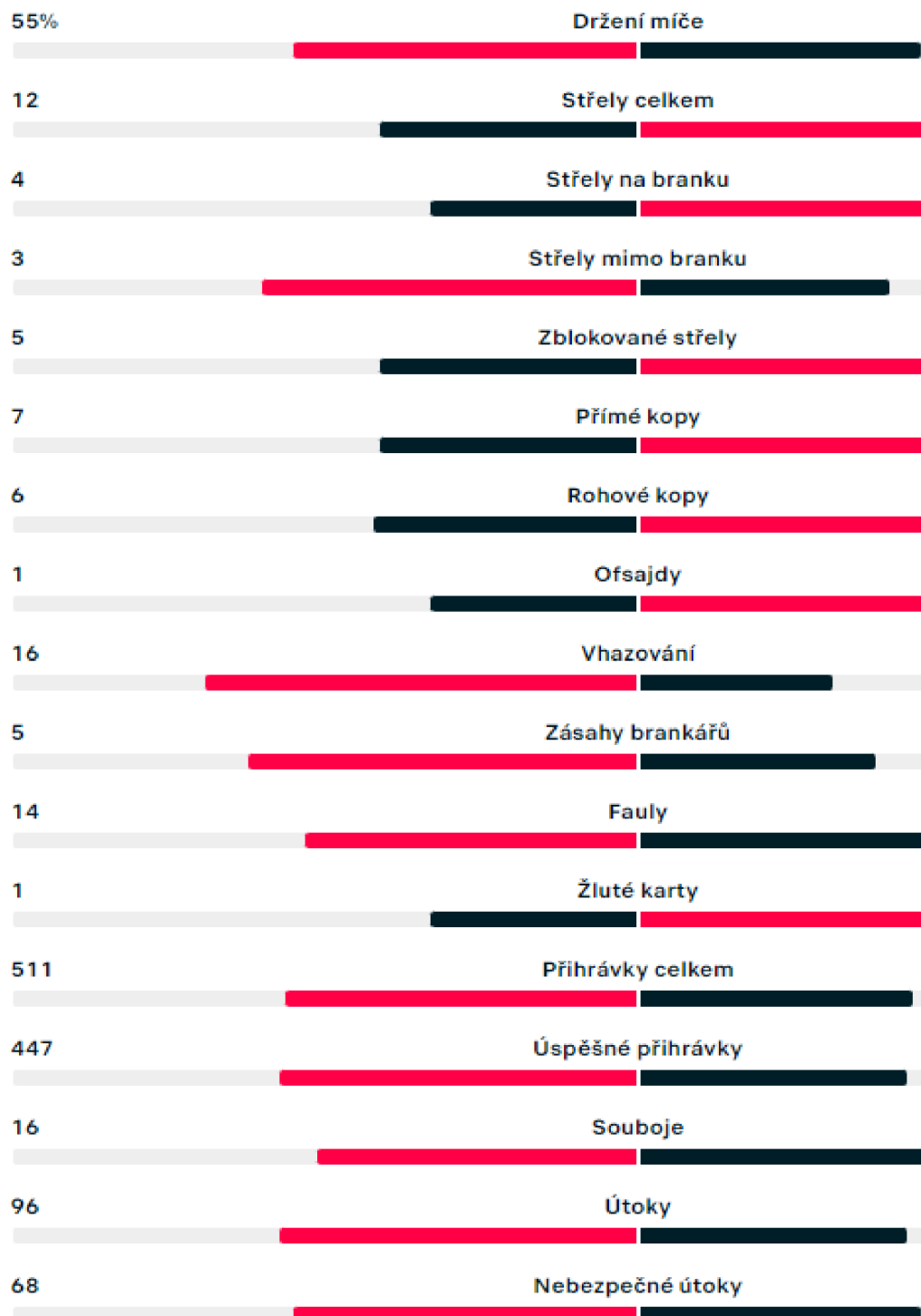
24.06.2022 12:30

 **1-3**
KONEC

Guangzhou City

ZÁPAS KURZY H2H TABULKA

PŘEHLED ZÁPASU **STATISTIKY** SESTAVY



3	4	5
0.01736	0.002468	0.000281
0.197468	0.109185	0.048296

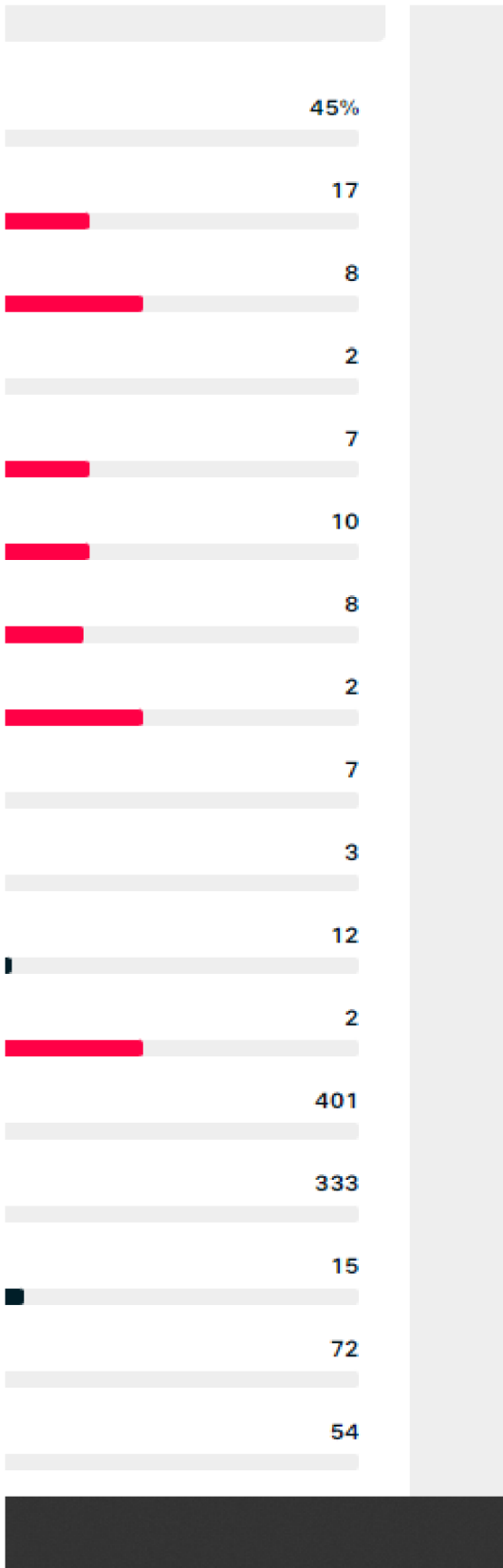
G		
3	4	5
0.19%	0.03%	0.00%
0.42%	0.06%	0.01%
0.46%	0.07%	0.01%
0.34%	0.05%	0.01%
0.19%	0.03%	0.00%
0.08%	0.01%	0.00%

HAS	0.473933649
HxG	0.600
LxGHT	1.266
HDS	2.211690363
HxGA	2.800
LxGAHT	1.266
AAS	0.789889415
AxG	1.000
LxGAT	1.266
ADS	0.947867299
AxGA	1.200
LxGAAT	1.266
LAAG	1.266
LAHG	1.266

1.06796
1.316775
1.94758
3.502768
7.872368



Changchun Yatai



5	16	3	3.200	0.600
5	9	2	1.800	0.400
5	10	4	2.000	0.800
5	12	4	2.400	0.800
5	11	7	2.200	1.400
5	7	7	1.400	1.400
5	5	6	1.000	1.200
5	6	5	1.200	1.000
5	6	7	1.200	1.400
5	5	6	1.000	1.200
5	4	5	0.800	1.000
5	5	5	1.000	1.000
5	6	7	1.200	1.400
5	3	5	0.600	1.000
5	3	6	0.600	1.200
5	1	9	0.200	1.800
5	2	12	0.400	2.400
5	3	14	0.600	2.800

7/4/2022 8:28

HgA	1.397015
AgA	0.460554

	0	1	2
H	0.247334	0.34553	0.241355
A	0.630934	0.290579	0.066914


		0	1	H 2
AG	0	15.61%	21.80%	15.23%
	1	7.19%	10.04%	7.01%
	2	1.66%	2.31%	1.61%
	3	0.25%	0.35%	0.25%
	4	0.03%	0.04%	0.03%
	5	0.00%	0.00%	0.00%

Total check 99.68%

Transfer to 100%

HW%	60.17%	60.36%
Draw%	27.38%	27.47%
AW%	12.13%	12.17%

0.5-	15.61%	15.65%
0.5+	84.08%	84.35%
1.5+	55.09%	55.27%
2.5+	28.17%	28.26%
3.5+	11.50%	11.53%
4.5+	3.75%	3.77%




Wuhan FC

04.07.2022 09:30

2-1

KONEC



Guang

① Neutrální hřiště - Jinzhou Stadium.

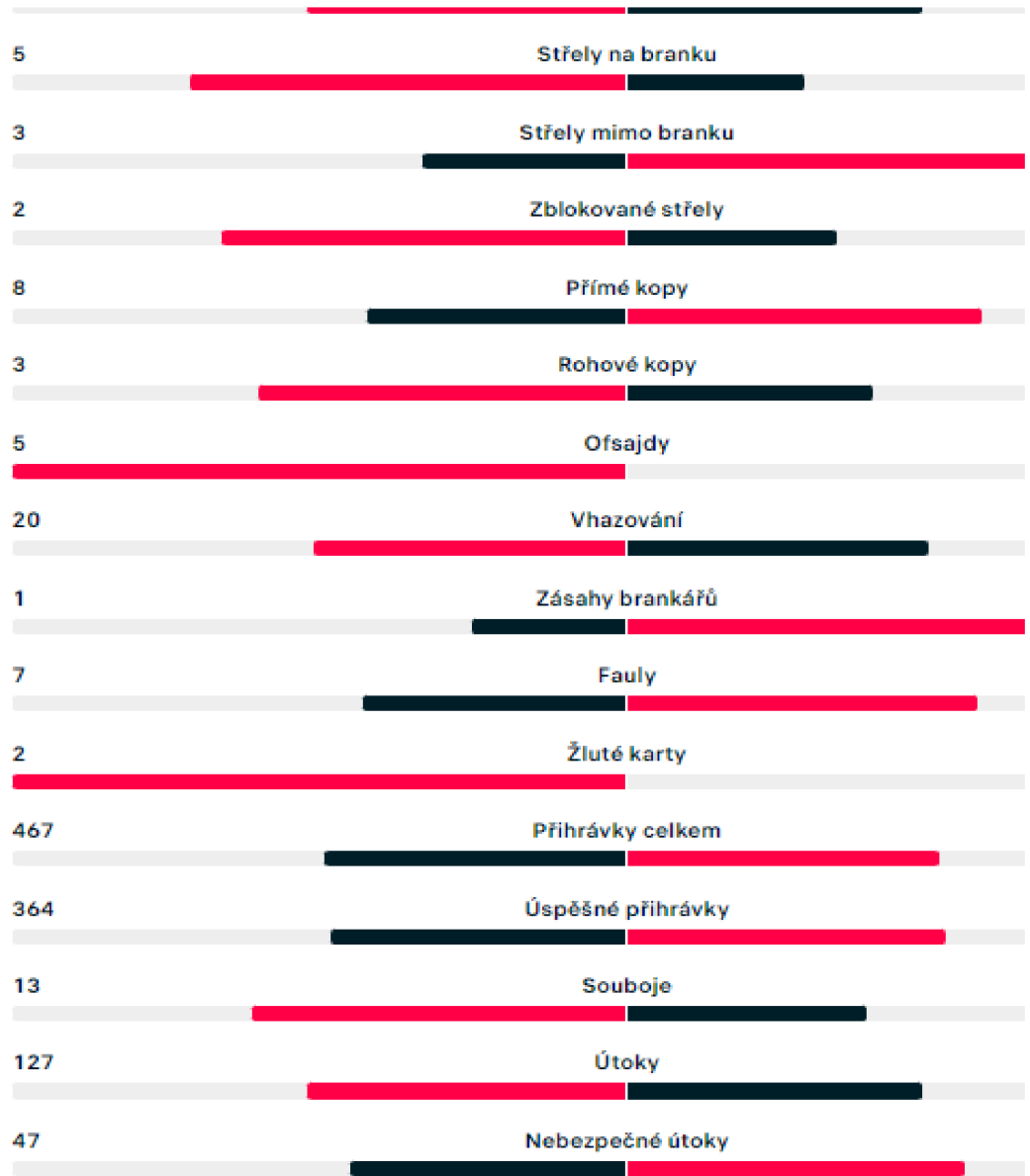
ZÁPAS
KURZY
H2H
TABULKA

PŘEHLED ZÁPASU
STATISTIKY
SESTAVY

ZÁPAS
1. POLOČAS
2. POLOČAS

48% Držení míče


10 Střely celkem



3	4	5
0.112392	0.039253	0.010968
0.010272	0.001183	0.000109

G			
	3	4	5
	7.09%	2.48%	0.69%
	3.27%	1.14%	0.32%
	0.75%	0.26%	0.07%
	0.12%	0.04%	0.01%
	0.01%	0.00%	0.00%
	0.00%	0.00%	0.00%

HAS	0.772413793
HxG	1.000
LxGHT	1.295
HDS	1.074626866
HxGA	1.429
LxGAHT	1.329
AAS	0.331034483
AxG	0.429
LxGAT	1.295
ADS	1.397014925
AxGA	1.857
LxGAAT	1.329
LAAG	1.295
LAHG	1.295

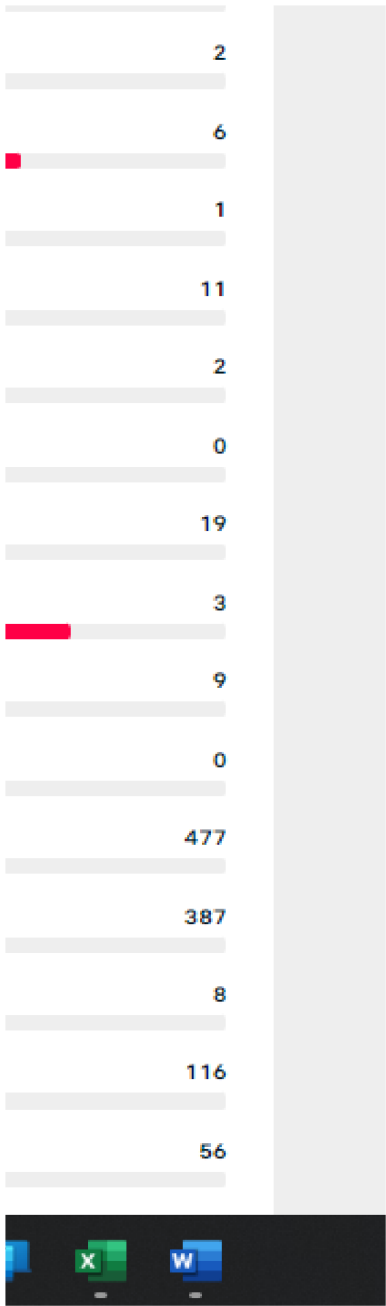


☆

zhou FC

52%

9



8	27	6	3.375	0.750
8	14	6	1.750	0.750
8	15	6	1.875	0.750
8	14	8	1.750	1.000
8	14	9	1.750	1.125
8	11	7	1.375	0.875
7	7	10	1.000	1.429
8	11	10	1.375	1.250
8	10	9	1.250	1.125
8	11	11	1.375	1.375
7	7	7	1.000	1.000
8	11	13	1.375	1.625
8	9	9	1.125	1.125
7	5	10	0.714	1.429
7	5	8	0.714	1.143
7	3	13	0.429	1.857
7	4	18	0.571	2.571
8	4	22	0.500	2.750
			1.295	1.329

7/4/2022 11:28

HgA	1.934328
AgA	0.429851

	0	1	2
H	0.144521	0.279552	0.270372
A	0.650606	0.279664	0.060107

			0	1	2
AG	0	9.40%	18.19%	17.59%	
	1	4.04%	7.82%	7.56%	
	2	0.87%	1.68%	1.63%	
	3	0.12%	0.24%	0.23%	
	4	0.01%	0.03%	0.03%	
	5	0.00%	0.00%	0.00%	


Total check 98.57%

Transfer to 100%


HW%	72.29%	73.34%
Draw%	19.00%	19.28%
AW%	7.28%	7.38%

0.5-	9.40%	9.54%
0.5+	89.17%	90.46%
1.5+	66.94%	67.91%
2.5+	40.66%	41.25%
3.5+	19.95%	20.24%
4.5+	7.71%	7.82%

04.07.2022 11:30

 **2-1**

Shanghai Port **KONEC**

 Neutrální hřiště - Puwan Stadium.

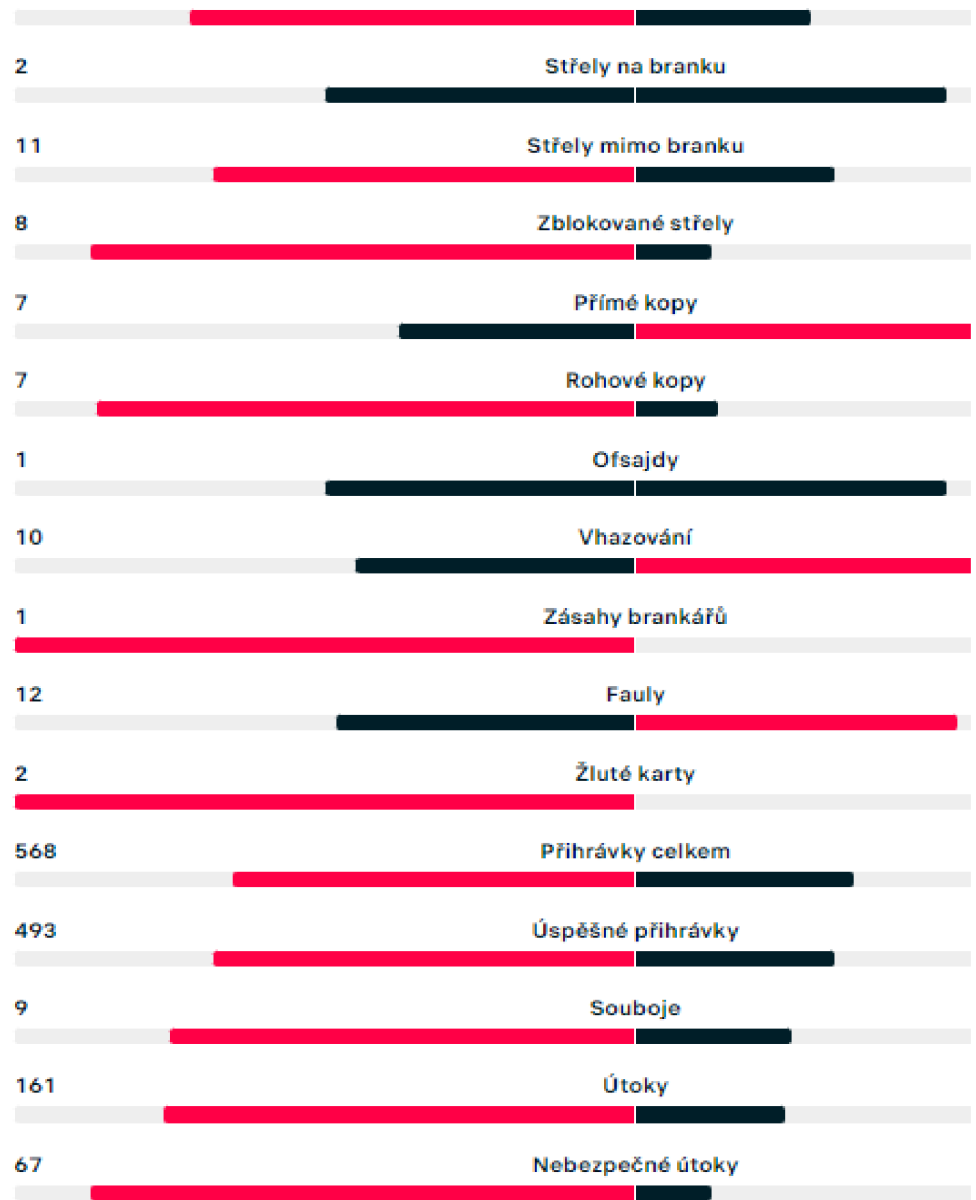
ZÁPAS KURZY H2H TABULKA

PŘEHLED ZÁPASU **STATISTIKY** SESTAVY

ZÁPAS 1. POLOČAS 2. POLOČAS

66% **Držení míče**


21 **Střely celkem**



3	4	5
0.17433	0.084303	0.032614
0.008612	0.000926	7.96E-05

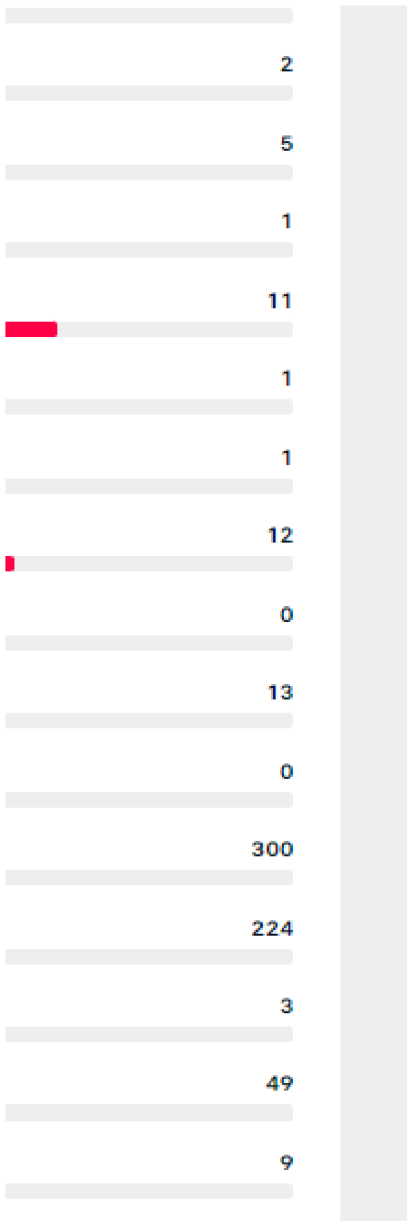
G	3	4	5
	11.34%	5.48%	2.12%
	4.88%	2.36%	0.91%
	1.05%	0.51%	0.20%
	0.15%	0.07%	0.03%
	0.02%	0.01%	0.00%
	0.00%	0.00%	0.00%

HAS	0.772413793
HxG	1.000
LxGHT	1.295
HDS	0.752238806
HxGA	1.000
LxGAHT	1.329
AAS	0.44137931
AxG	0.571
LxGAT	1.295
ADS	1.934328358
AxGA	2.571
LxGAAT	1.329
LAAG	1.295
LAHG	1.295


☆

Hebei

34%



1.329	1.295								
2.750	0.500	22	4	8					
2.571	0.571	18	4	7					V
1.857	0.429	13	3	7					V
1.143	0.714	8	5	7					D
1.429	0.714	10	5	7					V
1.125	1.125	9	9	8					
1.625	1.375	13	11	8					
1.000	1.000	7	7	7					D
1.375	1.375	11	11	8					
1.125	1.250	9	10	8					
1.250	1.375	10	11	8					
1.429	1.000	10	7	7					D
0.875	1.375	7	11	8					
1.125	1.750	9	14	8					
1.000	1.750	8	14	8					
0.750	1.875	6	15	8					
0.750	1.750	6	14	8					
0.750	3.375	6	27	8					

7/4/2022 11:28

HgA	0.767591
AgA	0.614072

	0	1	2
H	0.46413	0.356262	0.136732
A	0.541143	0.332301	0.102028


		0	1	H 2
AG	0	25.12%	19.28%	7.40%
	1	15.42%	11.84%	4.54%
	2	4.74%	3.63%	1.40%
	3	0.97%	0.74%	0.29%
	4	0.15%	0.11%	0.04%
	5	0.02%	0.01%	0.01%

Total check 99.98%

		Transfer to 100%
HW%	35.41%	35.41%
Draw%	38.42%	38.43%
AW%	26.15%	26.15%

0.5-	25.12%	25.12%
0.5+	74.86%	74.88%
1.5+	40.16%	40.17%
2.5+	16.19%	16.19%
3.5+	5.15%	5.15%
4.5+	1.33%	1.34%

04.07.2022 13:30



Chengdu Rongcheng

1-1

KONEC

(i) Neutrální hřiště - Wuhua County Olympic Sports Centre

ZÁPAS
KURZY
H2H
TABULKA

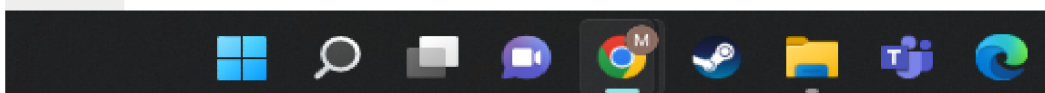
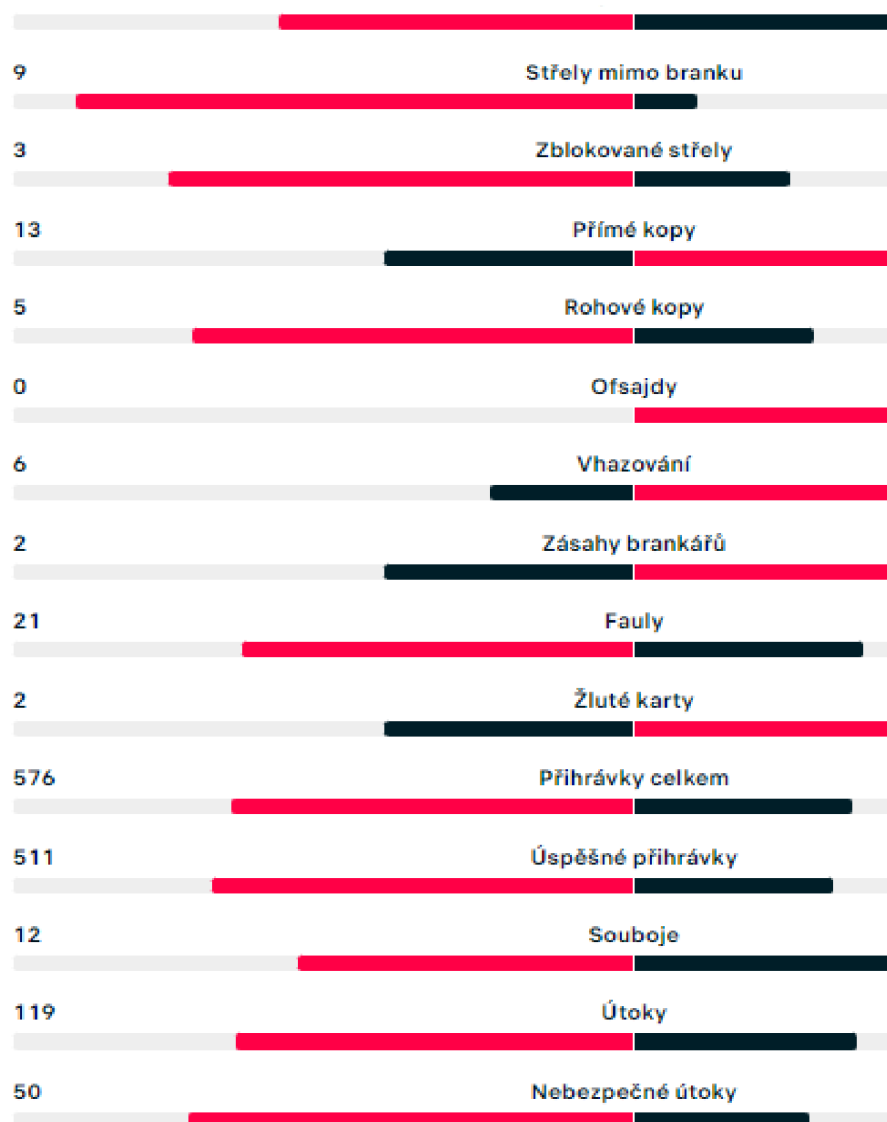
PŘEHLED ZÁPASU
STATISTIKY
SESTAVY

ZÁPAS
1. POLOČAS
2. POLOČAS

66% Držení míče

16 Střely celkem


Střely na branku



3	4	5
0.034985	0.006713	0.001031
0.020884	0.003206	0.000394

G	3	4	5
	1.89%	0.36%	0.06%
	1.16%	0.22%	0.03%
	0.36%	0.07%	0.01%
	0.07%	0.01%	0.00%
	0.01%	0.00%	0.00%
	0.00%	0.00%	0.00%

HAS	0.551724138
HxG	0.714
LxGHT	1.295
HDS	0.859701493
HxGA	1.143
LxGAHT	1.329
AAS	0.551724138
AxG	0.714
LxGAT	1.295
ADS	1.074626866
AxGA	1.429
LxGAAT	1.329
LAAG	1.295
LAHG	1.295

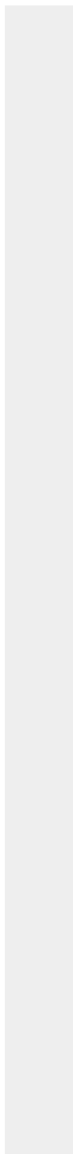
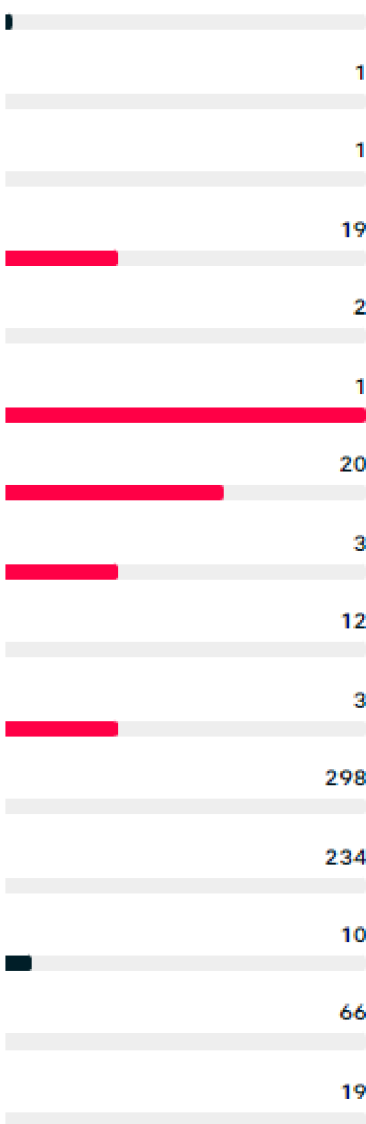

☆

Cangzhou

34%

5

a



	8	27	6	3.375	0.750
	8	14	6	1.750	0.750
	8	15	6	1.875	0.750
	8	14	8	1.750	1.000
	8	14	9	1.750	1.125
	8	11	7	1.375	0.875
D	7	7	10	1.000	1.429
	8	11	10	1.375	1.250
	8	10	9	1.250	1.125
	8	11	11	1.375	1.375
D	7	7	7	1.000	1.000
	8	11	13	1.375	1.625
	8	9	9	1.125	1.125
V	7	5	10	0.714	1.429
D	7	5	8	0.714	1.143
V	7	3	13	0.429	1.857
V	7	4	18	0.571	2.571
	8	4	22	0.500	2.750
				1.295	1.329

7/4/2022 16:31

HgA	1.974608
AgA	0.626558

	0	1	2
H	0.138816	0.274107	0.270627
A	0.534428	0.33485	0.104902

		0	1	2
AG	0	7.42%	14.65%	14.46%
	1	4.65%	9.18%	9.06%
	2	1.46%	2.88%	2.84%
	3	0.30%	0.60%	0.59%
	4	0.05%	0.09%	0.09%
	5	0.01%	0.01%	0.01%


Total check 98.43%

Transfer to 100%

HW%	67.76%	68.84%
Draw%	19.86%	20.18%
AW%	10.81%	10.99%

0.5-	7.42%	7.54%
0.5+	91.01%	92.46%
1.5+	71.71%	72.86%
2.5+	46.62%	47.36%
3.5+	24.85%	25.25%
4.5+	10.70%	10.87%

04.07.2022 19:00



Göteborg

2-0

KONEC

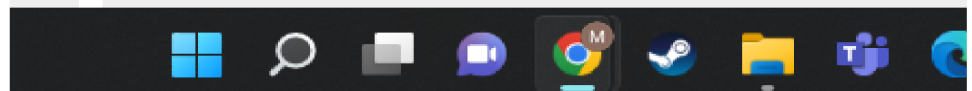
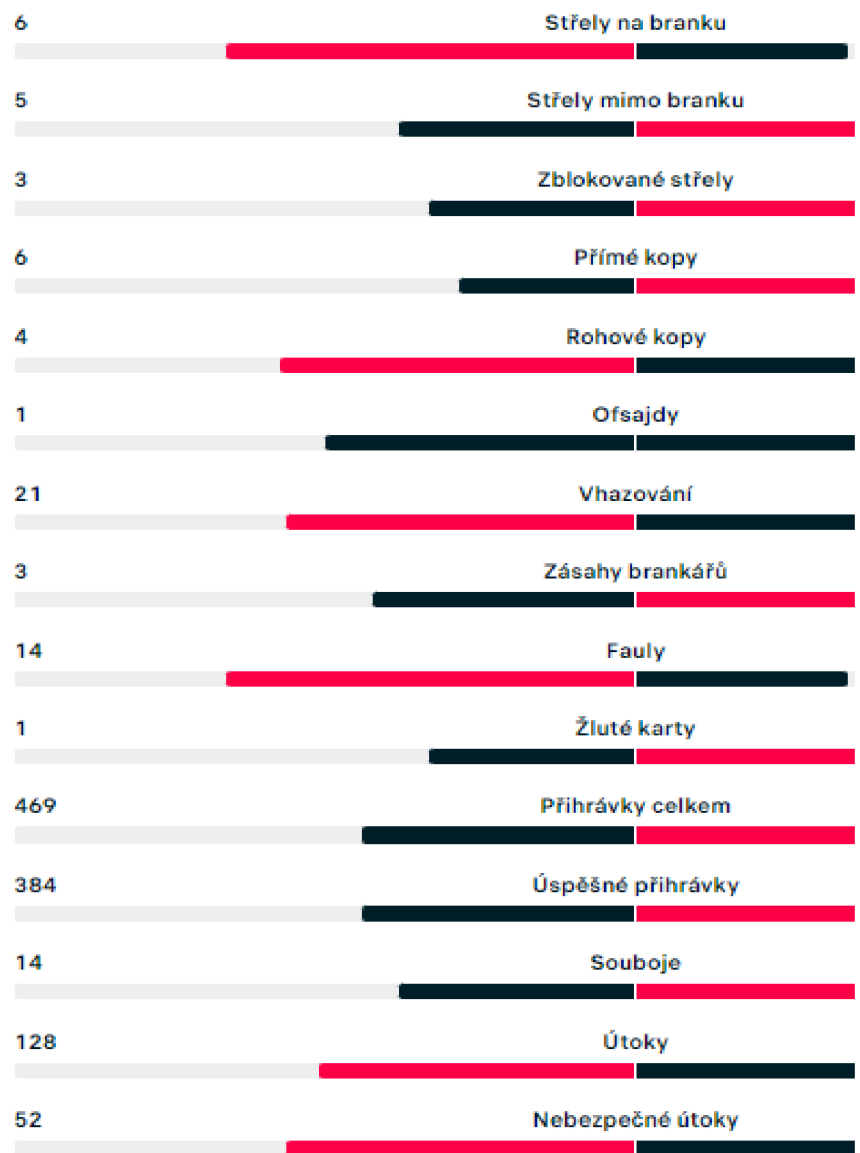
ZÁPAS
KURZY
H2H
TABULKA

PŘEHLED ZÁPASU
STATISTIKY
SESTAVY

ZÁPAS
1. POLOČAS
2. POLOČAS

44% Držení míče


14 Střely celkem



	3	4	5
	0.178127	0.087933	0.034727
	0.021909	0.003432	0.00043

G	3	4	5
	9.52%	4.70%	1.86%
	5.96%	2.94%	1.16%
	1.87%	0.92%	0.36%
	0.39%	0.19%	0.08%
	0.06%	0.03%	0.01%
	0.01%	0.00%	0.00%

HAS	0.912408964
HxG	1.182
LxGHT	1.295
HDS	0.765793657
HxGA	1.000
LxGAHT	1.306
AAS	0.631667745
AxG	0.818
LxGAT	1.295
ADS	1.670822525
AxGA	2.182
LxGAAT	1.306
LAAG	1.295
LAHG	1.295

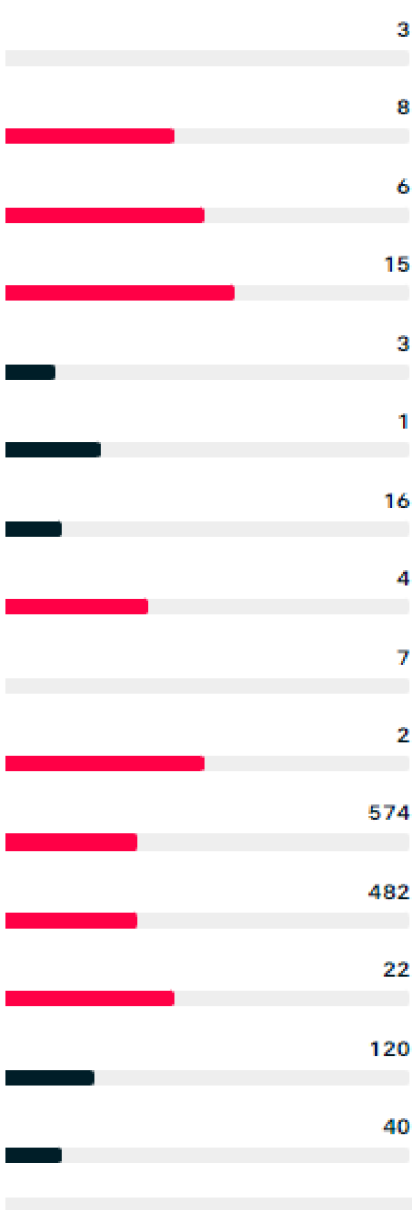

☆

Degerfors

56%

17

- 12
- 13
- 13
- 12
- 13
- 12
- 12
- 12
- 12
- 12
- D 11
- 12
- 12
- 12
- 12
- 12
- V 11
- 13



25	17	2.083333	1.416667
26	10	2	0.769231
18	15	1.384615	1.153846
21	11	1.75	0.916667
14	12	1.076923	0.923077
15	10	1.25	0.833333
24	13	2	1.083333
12	10	1	0.833333
13	11	1.181818	1
14	19	1.166667	1.583333
15	14	1.25	1.166667
11	19	0.916667	1.583333
11	16	0.916667	1.333333
13	30	1.083333	2.5
9	24	0.818182	2.181818
11	21	0.846154	1.615385
15.75	15.75	1.295272	1.305835

7/11/2022 12:53

HgA	0.754361
AgA	0.792079

	0	1	2
H	0.470311	0.354784	0.133818
A	0.452902	0.358734	0.142073

		H		
		0	1	2
AG	0	21.30%	16.07%	6.06%
	1	16.87%	12.73%	4.80%
	2	6.68%	5.04%	1.90%
	3	1.76%	1.33%	0.50%
	4	0.35%	0.26%	0.10%
	5	0.06%	0.04%	0.02%

Total check 99.97%



Transfer to 100%		
HW%	30.86%	30.87%
Draw%	36.06%	36.07%
AW%	33.05%	33.06%

0.5-	21.30%	21.31%
0.5+	78.67%	78.69%
1.5+	45.73%	45.74%
2.5+	20.26%	20.27%
3.5+	7.13%	7.13%
4.5+	2.05%	2.05%

LIVESPORT

FOTBAL > ČINA: SUPERLIGA - 10. KOLO

11.07.2022 13:30

☆  Hebei **0-1**  Guangzhou F

KONEC

Neutrální hřiště - Puwan Stadium. Bez diváků.

ZÁPAS H2H TABULKA

PŘEHLED ZÁPASU **STATISTIKY** SESTAVY

ZÁPAS 1. POLOČAS 2. POLOČAS

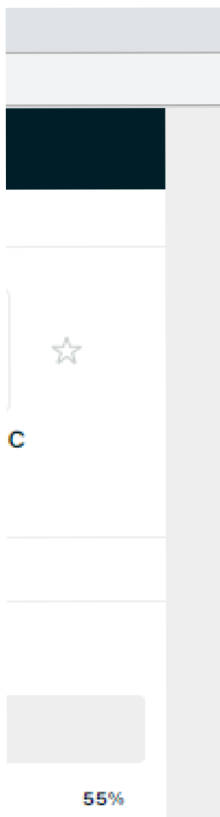
45% Držení míče



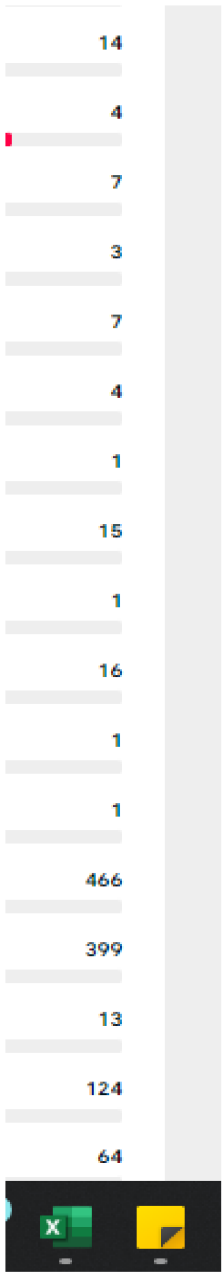
	3	4	5
	0.033649	0.006346	0.000957
	0.037511	0.007428	0.001177

G	3	4	5
	1.52%	0.29%	0.04%
	1.21%	0.23%	0.03%
	0.48%	0.09%	0.01%
	0.13%	0.02%	0.00%
	0.02%	0.00%	0.00%
	0.00%	0.00%	0.00%

HAS	0.422733678
HxG	0.556
LxGHT	1.314
HDS	1.782178218
HxGA	2.333
LxGAHT	1.309
AAS	0.338186942
AxG	0.444
LxGAT	1.314
ADS	1.357850071
AxGA	1.778
LxGAAT	1.309
LAAG	1.314
LAHG	1.314



	Wuhan TT	9
	Shandong L	10
H	Henan Longmen	9
	Shanghai Shen	9
A	Beijing Guoan	9
	Shanghai Port	9
	Zhejiang	10
	Meizhou	10
H	Shenzhen	9
	Chengdu	10
	Wuhan FC	9
A	Changchun	9
	Tianjin Tiger	9
	Dalian Pro	10
	Cangzhou	9
A	Guangzhou FC	9
H	Hebei	9
	Guangzhou City	10



32	6	3.555556	0.666667
19	8	1.9	0.8
17	7	1.888889	0.777778
15	8	1.666667	0.888889
14	9	1.555556	1
10	8	1.111111	0.888889
13	9	1.3	0.9
12	9	1.2	0.9
13	14	1.444444	1.555556
10	11	1	1.1
9	16	1	1.777778
12	12	1.333333	1.333333
11	11	1.222222	1.222222
12	16	1.2	1.6
7	13	0.777778	1.444444
4	16	0.444444	1.777778
5	21	0.555556	2.333333
5	26	0.5	2.6
12.22222	12.22222	1.314198	1.309259

7/11/2022 13:04

HgA	1.103253
AgA	1.848185

	0	1	2
H	0.33179	0.366048	0.201922
A	0.157523	0.291131	0.269032

		0	1	H 2
AG	0	5.23%	5.77%	3.18%
	1	9.66%	10.66%	5.88%
	2	8.93%	9.85%	5.43%
	3	5.50%	6.07%	3.35%
	4	2.54%	2.80%	1.55%
	5	0.94%	1.04%	0.57%

Total check 98.73%

Transfer to 100%

HW%	22.40%	22.69%
Draw%	22.72%	23.01%
AW%	53.62%	54.31%

0.5-	5.23%	5.29%
0.5+	93.51%	94.71%
1.5+	78.08%	79.08%
2.5+	55.32%	56.03%
3.5+	32.92%	33.35%
4.5+	16.40%	16.61%

LIVESPORT

FOTBAL > ČINA: SUPERLIGA - 10. KOLO

11.07.2022 13:30

Shenzhen 2-1 Beijing Guoan

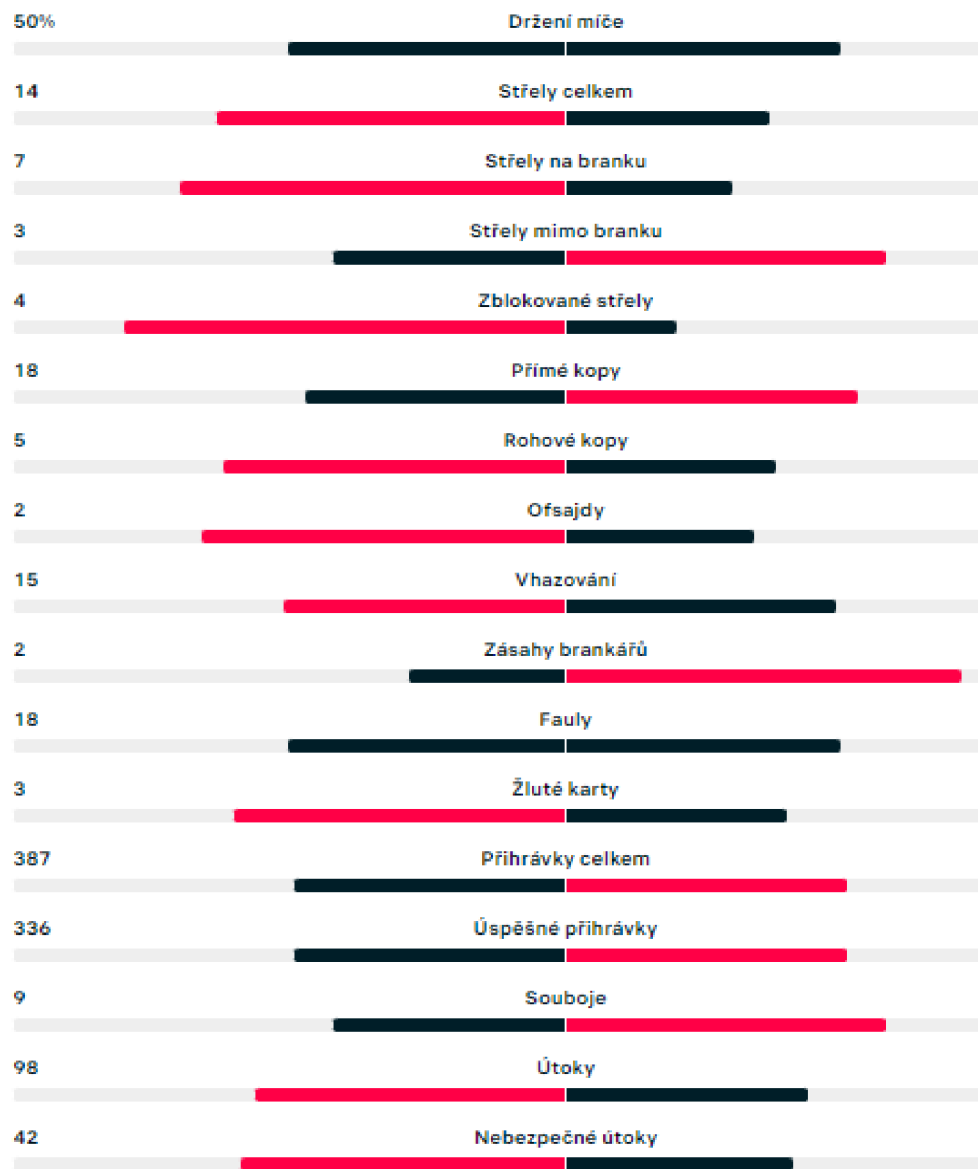
KONEC

Neutrální hřiště - Wuhua County Olympic Sports Centre. Bez diváků.

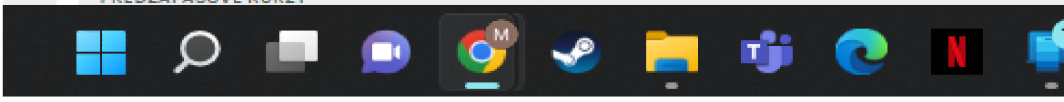
ZÁPAS H2H TABULKA

PŘEHLED ZÁPASU STATISTIKY SESTAVY

ZÁPAS 1. POLOČAS 2. POLOČAS



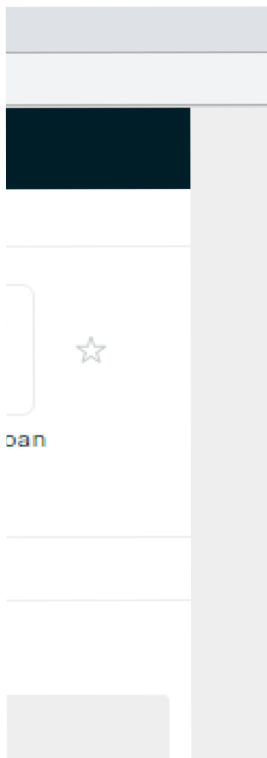
PŘEDZÁPASOVÉ KURZY



	3	4	5
	0.074257	0.020481	0.004519
	0.16574	0.07658	0.028307

G	3	4	5
	1.17%	0.32%	0.07%
	2.16%	0.60%	0.13%
	2.00%	0.55%	0.12%
	1.23%	0.34%	0.07%
	0.57%	0.16%	0.03%
	0.21%	0.06%	0.01%

HAS	1.099107562
HxG	1.444
LxGHT	1.314
HDS	1.188118812
HxGA	1.556
LxGAHT	1.309
AAS	1.183654298
AxG	1.556
LxGAT	1.314
ADS	0.763790665
AxGA	1.000
LxGAAT	1.309
LAAG	1.314
LAHG	1.314



	Wuhan TT	9
	Shandong L	10
H	Henan Longmen	9
	Shanghai Shen	9
A	Beijing Guoan	9
	Shanghai Port	9
	Zhejiang	10
	Meizhou	10
H	Shenzhen	9
	Chengdu	10
	Wuhan FC	9
A	Changchun	9
	Tianjin Tiger	9
	Dalian Pro	10
	Cangzhou	9
A	Guangzhou FC	9
H	Hebei	9
	Guangzhou City	10



32	6	3.555556	0.666667
19	8	1.9	0.8
17	7	1.888889	0.777778
15	8	1.666667	0.888889
14	9	1.555556	1
10	8	1.111111	0.888889
13	9	1.3	0.9
12	9	1.2	0.9
13	14	1.444444	1.555556
10	11	1	1.1
9	16	1	1.777778
12	12	1.333333	1.333333
11	11	1.222222	1.222222
12	16	1.2	1.6
7	13	0.777778	1.444444
4	16	0.444444	1.777778
5	21	0.555556	2.333333
5	26	0.5	2.6
12.22222	12.22222	1.314198	1.309259

7/11/2022 13:07

HgA	1.923621
AgA	0.792079

	0	1	2
H	0.146077	0.280997	0.270266
A	0.452902	0.358734	0.142073


		0	1	H 2
AG	0	6.62%	12.73%	12.24%
	1	5.24%	10.08%	9.70%
	2	2.08%	3.99%	3.84%
	3	0.55%	1.05%	1.01%
	4	0.11%	0.21%	0.20%
	5	0.02%	0.03%	0.03%

Total check 98.59%


Transfer to 100%

HW%	62.65%	63.55%
Draw%	21.25%	21.56%
AW%	14.68%	14.89%

0.5-	6.62%	6.71%
0.5+	91.97%	93.29%
1.5+	74.00%	75.06%
2.5+	49.61%	50.32%
3.5+	27.52%	27.92%
4.5+	12.53%	12.71%



FOTBAL > ČINA: SUPERLIGA - 10. KOLO




Henan Songshan Longmen

11.07.2022 13:30

6-2

KONEC



Changchun

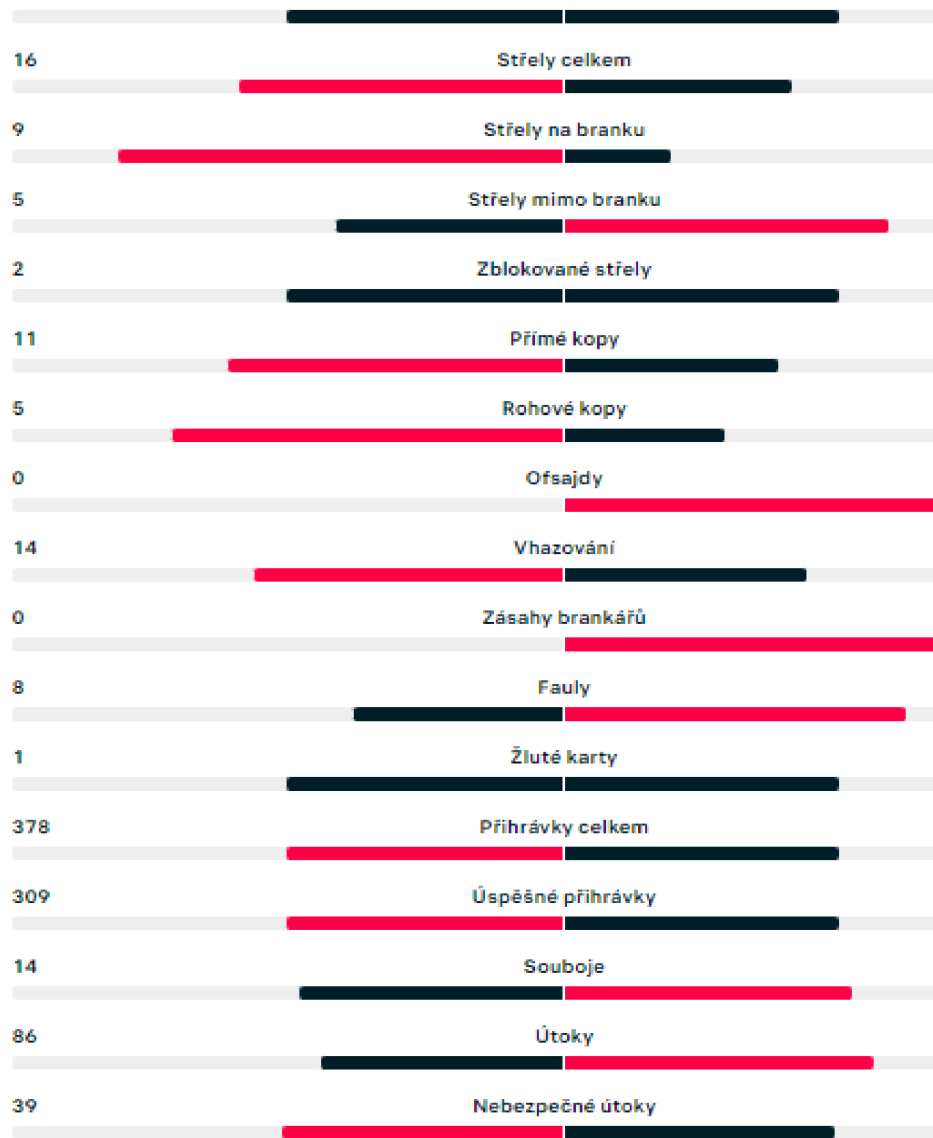
Neutrální hřiště - Wuyuan River Stadium. Bez diváků.

ZÁPAS
H2H
TABULKA

PŘEHLED ZÁPASU
STATISTIKY
SESTAVY

ZÁPAS
1. POLOČAS
2. POLOČAS

50%
Držení míče



PŘEDZÁPASOVÉ KURZY

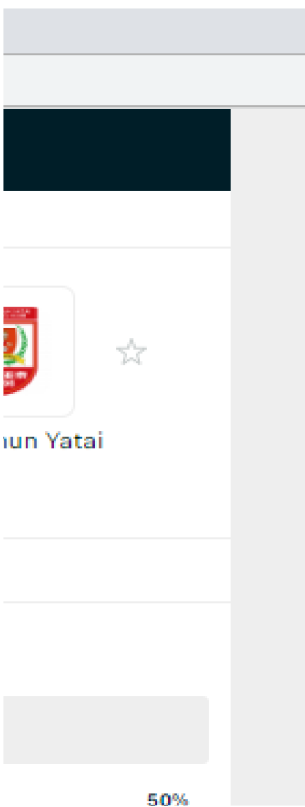


3	4	5	6
0.173296	0.083339	0.032063	0.010279
0.037511	0.007428	0.001177	0.000155

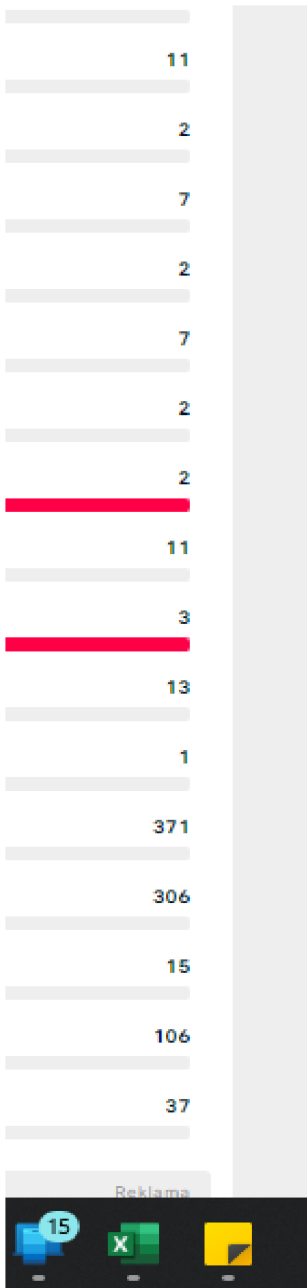
G	3	4	5
	7.85%	3.77%	1.45%
	6.22%	2.99%	1.15%
	2.46%	1.18%	0.46%
	0.65%	0.31%	0.12%
	0.13%	0.06%	0.02%
	0.02%	0.01%	0.00%

0.15%

HAS	1.437294504
HxG	1.889
LxGHT	1.314
HDS	0.594059406
HxGA	0.778
LxGAHT	1.309
AAS	1.014560827
AxG	1.333
LxGAT	1.314
ADS	1.018387553
AxGA	1.333
LxGAAT	1.309
LAAG	1.314
LAHG	1.314



	Wuhan TT	9
	Shandong L	10
H	Henan Longmen	9
	Shanghai Shen	9
A	Beijing Guoan	9
	Shanghai Port	9
	Zhejiang	10
	Meizhou	10
H	Shenzhen	9
	Chengdu	10
	Wuhan FC	9
A	Changchun	9
	Tianjin Tiger	9
	Dalian Pro	10
	Cangzhou	9
A	Guangzhou FC	9
H	Hebei	9
	Guangzhou City	10



32	6	3.555556	0.666667
19	8	1.9	0.8
17	7	1.888889	0.777778
15	8	1.666667	0.888889
14	9	1.555556	1
10	8	1.111111	0.888889
13	9	1.3	0.9
12	9	1.2	0.9
13	14	1.444444	1.555556
10	11	1	1.1
9	16	1	1.777778
12	12	1.333333	1.333333
11	11	1.222222	1.222222
12	16	1.2	1.6
7	13	0.777778	1.444444
4	16	0.444444	1.777778
5	21	0.555556	2.333333
5	26	0.5	2.6
12.22222	12.22222	1.314198	1.309259

7/12/2022 12:25

HgA	0.558140
AgA	2.381395

	0	1	2
H	0.572273	0.319408	0.089137
A	0.092422	0.220092	0.262063

		0	1	H 2
AG	0	5.29%	2.95%	0.82%
	1	12.60%	7.03%	1.96%
	2	15.00%	8.37%	2.34%
	3	11.90%	6.64%	1.85%
	4	7.09%	3.96%	1.10%
	5	3.38%	1.88%	0.53%

Total check 96.54%



Transfer to 100%		
HW%	6.90%	7.14%
Draw%	15.03%	15.57%
AW%	74.62%	77.29%

0.5-	5.29%	5.48%
0.5+	91.25%	94.52%
1.5+	75.70%	78.42%
2.5+	52.85%	54.75%
3.5+	30.46%	31.55%
4.5+	14.01%	14.51%

LIVESPORT

FOTBAL > ČINA: SUPERLIGA - 10. KOLO

12.07.2022 12:30

☆  0-1  KONEC

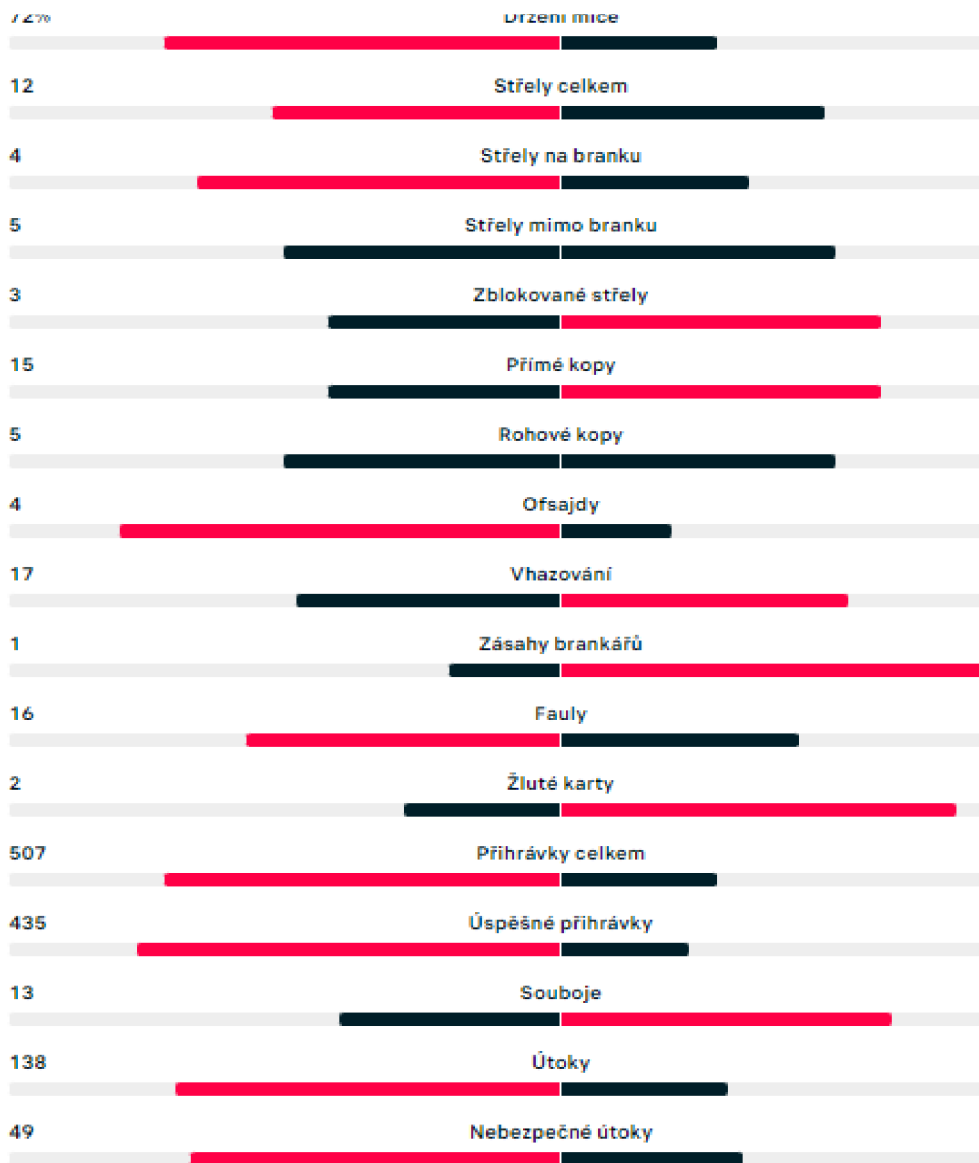
Shanghai Port Wuhan Three T

Neutrální hřiště - Puwan Stadium. Bez diváků.

ZÁPAS H2H TABULKA

PŘEHLED ZÁPASU **STATISTIKY** SESTAVY

ZÁPAS 1. POLOČAS 2. POLOČAS



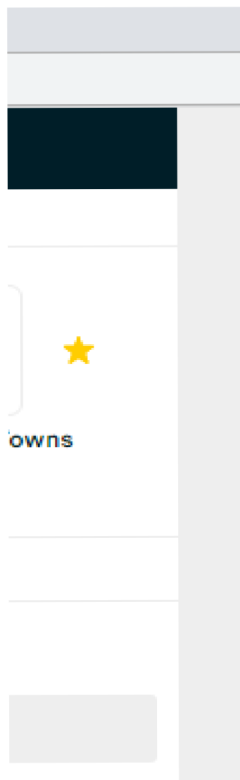
PŘEDZÁPASOVÉ KURZY



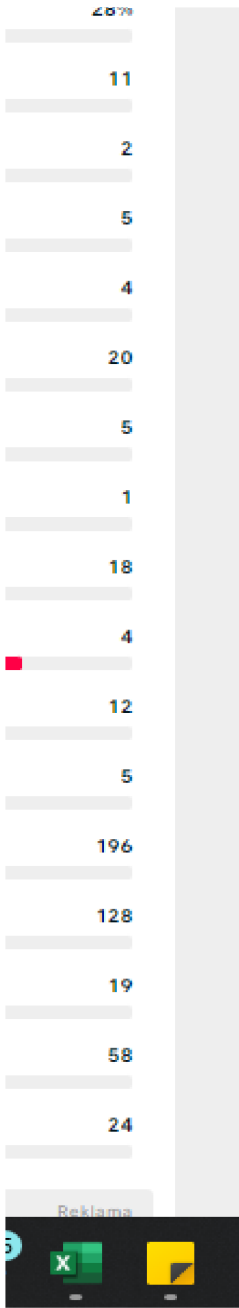
	3	4	5
	0.016584	0.002314	0.000258
	0.208025	0.123848	0.058986

G	3	4	5
	0.15%	0.02%	0.00%
	0.36%	0.05%	0.01%
	0.43%	0.06%	0.01%
	0.34%	0.05%	0.01%
	0.21%	0.03%	0.00%
	0.10%	0.01%	0.00%

HAS	0.828729282
HxG	1.111
LxGHT	1.341
HDS	0.669767442
HxGA	0.889
LxGAHT	1.327
AAS	2.651933702
AxG	3.556
LxGAT	1.341
ADS	0.502325581
AxGA	0.667
LxGAAT	1.327
LAAG	1.341
LAHG	1.341



A	1 Wuhan TT	9
	2 Shandong L	10
	3 Henan Longmen	10
	4 Shanghai Shen	9
	5 Beijing Guoan	10
	6 Shenzhen	10
H	7 Shanghai Port	9
	8 Zhejiang	10
	9 Meizhou	10
	10 Chengdu	10
	11 Wuhan FC	9
H	12 Tianjin Tiger	9
	13 Changchun	10
	14 Dalian Pro	10
A	15 Cangzhou	9
	16 Guangzhou FC	10
	17 Hebei	10
	18 Guangzhou City	10



32	6	3.555556	0.666667
19	8	1.9	0.8
23	9	2.3	0.9
15	8	1.666667	0.888889
15	11	1.5	1.1
15	15	1.5	1.5
10	8	1.111111	0.888889
13	9	1.3	0.9
12	9	1.2	0.9
10	11	1	1.1
9	16	1	1.777778
11	11	1.222222	1.222222
14	18	1.4	1.8
12	16	1.2	1.6
7	13	0.777778	1.444444
5	16	0.5	1.6
5	22	0.5	2.2
5	26	0.5	2.6
12.88889	12.88889	1.340741	1.32716

7/12/2022 12:25

HgA	1.330233
AgA	0.716279

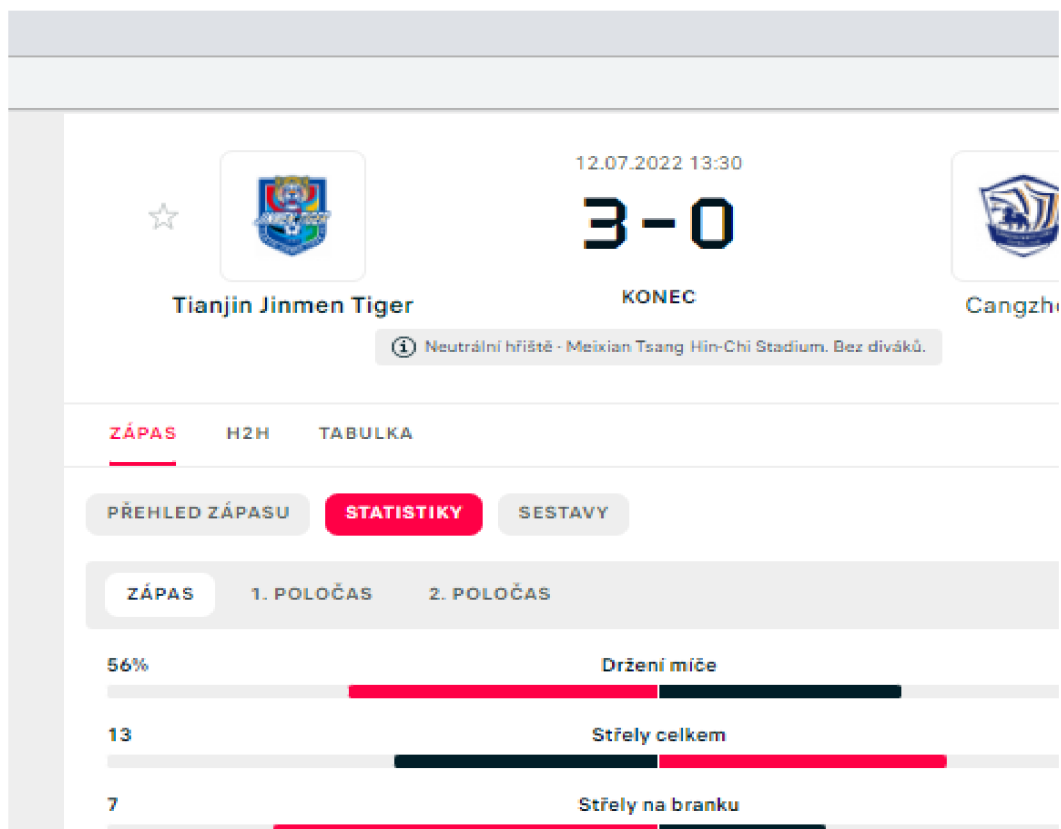
	0	1	2
H	0.264416	0.351734	0.233944
A	0.488567	0.34995	0.125331

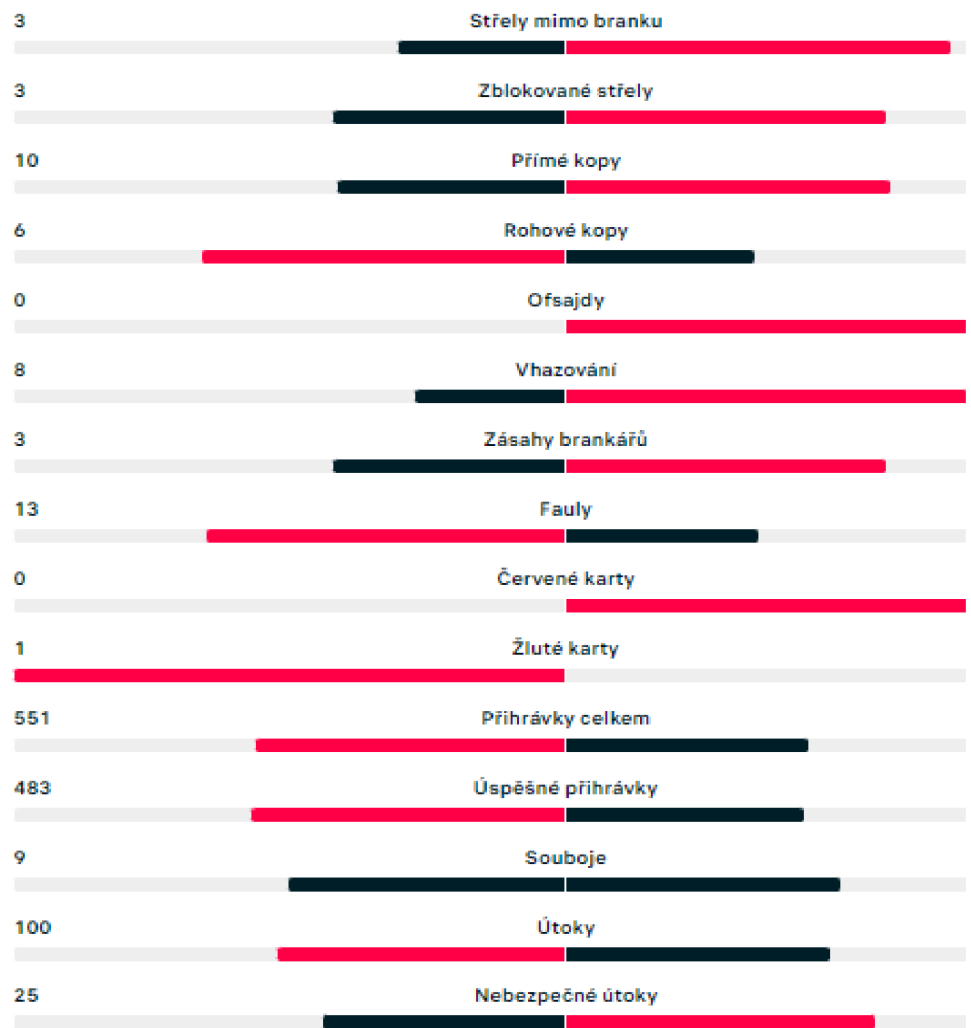
		0	1	H 2
AG	0	12.92%	17.18%	11.43%
	1	9.25%	12.31%	8.19%
	2	3.31%	4.41%	2.93%
	3	0.79%	1.05%	0.70%
	4	0.14%	0.19%	0.13%
	5	0.02%	0.03%	0.02%

Total check 99.74%

		Transfer to 100%
HW%	51.14%	51.28%
Draw%	28.49%	28.56%
AW%	20.11%	20.16%

0.5-	12.92%	12.95%
0.5+	86.82%	87.05%
1.5+	60.38%	60.54%
2.5+	33.33%	33.42%
3.5+	14.88%	14.92%
4.5+	5.43%	5.45%





PŘEDZÁPASOVÉ KURZY

1 ↓ 1.90

0 ↑ 3.50

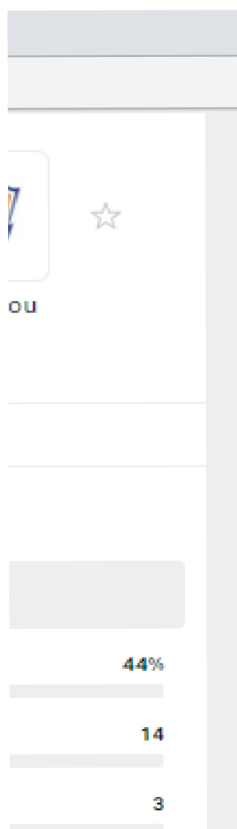


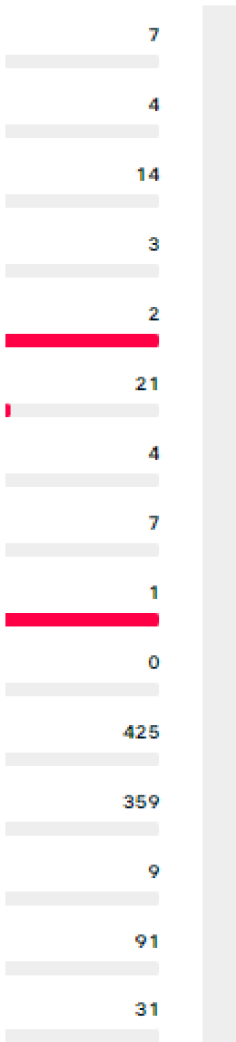
3	4	5
0.103733	0.034497	0.009178
0.029924	0.005358	0.000768

G	3	4	5
	5.07%	1.69%	0.45%
	3.63%	1.21%	0.32%
	1.30%	0.43%	0.12%
	0.31%	0.10%	0.03%
	0.06%	0.02%	0.00%
	0.01%	0.00%	0.00%

HAS	0.91160221
HxG	1.222
LxGHT	1.341
HDS	0.920930233
HxGA	1.222
LxGAHT	1.327
AAS	0.580110497
AxG	0.778
LxGAT	1.341
ADS	1.088372093
AxGA	1.444
LxGAAT	1.327
LAAG	1.341
LAHG	1.341

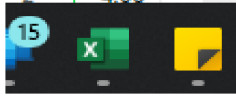
A	1 Wuhan TT	9
	2 Shandong L	10
	3 Henan Longmen	10
	4 Shanghai Shen	9
	5 Beijing Guoan	10
	6 Shenzhen	10
H	7 Shanghai Port	9
	8 Zhejiang	10
	9 Meizhou	10
	10 Chengdu	10
	11 Wuhan FC	9
H	12 Tianjin Tiger	9
	13 Changchun	10
	14 Dalian Pro	10
A	15 Cangzhou	9
	16 Guangzhou FC	10
	17 Hebei	10
	18 Guangzhou City	10





Reklama

2 ↑ 4.00



32	6	3.555556	0.666667
19	8	1.9	0.8
23	9	2.3	0.9
15	8	1.666667	0.888889
15	11	1.5	1.1
15	15	1.5	1.5
10	8	1.111111	0.888889
13	9	1.3	0.9
12	9	1.2	0.9
10	11	1	1.1
9	16	1	1.777778
11	11	1.222222	1.222222
14	18	1.4	1.8
12	16	1.2	1.6
7	13	0.777778	1.444444
5	16	0.5	1.6
5	22	0.5	2.2
5	26	0.5	2.6
12.88889	12.88889	1.340741	1.32716