

Česká zemědělská univerzita v Praze

Fakulta lesnická a dřevařská

Katedra zpracování dřeva a biomateriálů



Fakulta lesnická
a dřevařská

Příloha č. 2

Architektonická studie

k návrhu rodinného domu na bázi dřeva

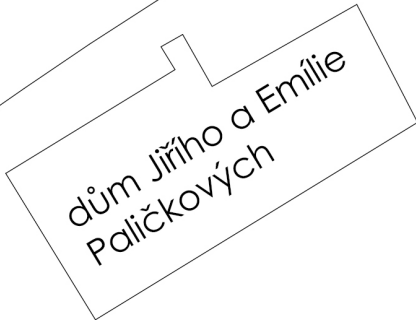
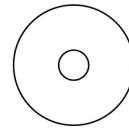




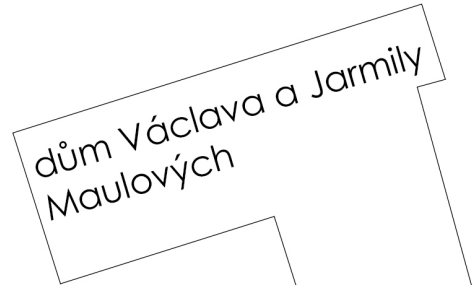
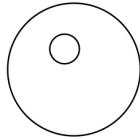
Na Babě



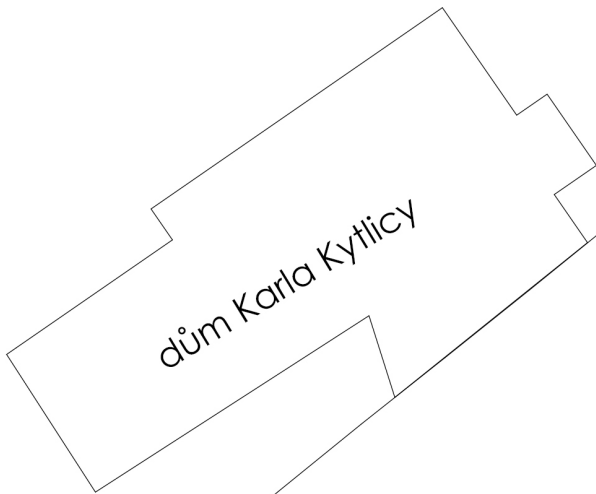
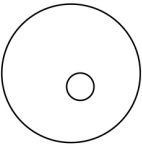
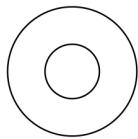
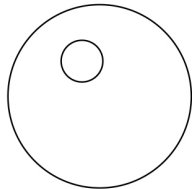
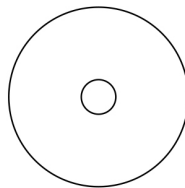
dům
Františka Heřmana



dům Jiřího a Emílie
Paličkových

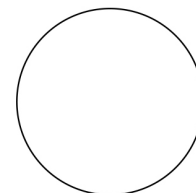
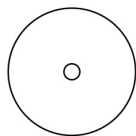
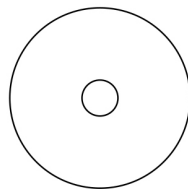
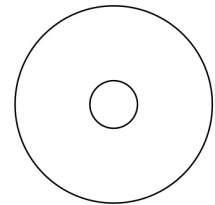
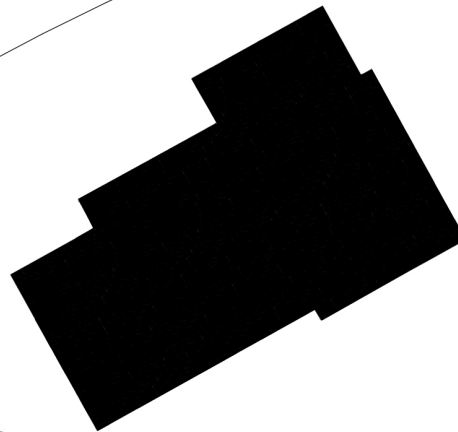


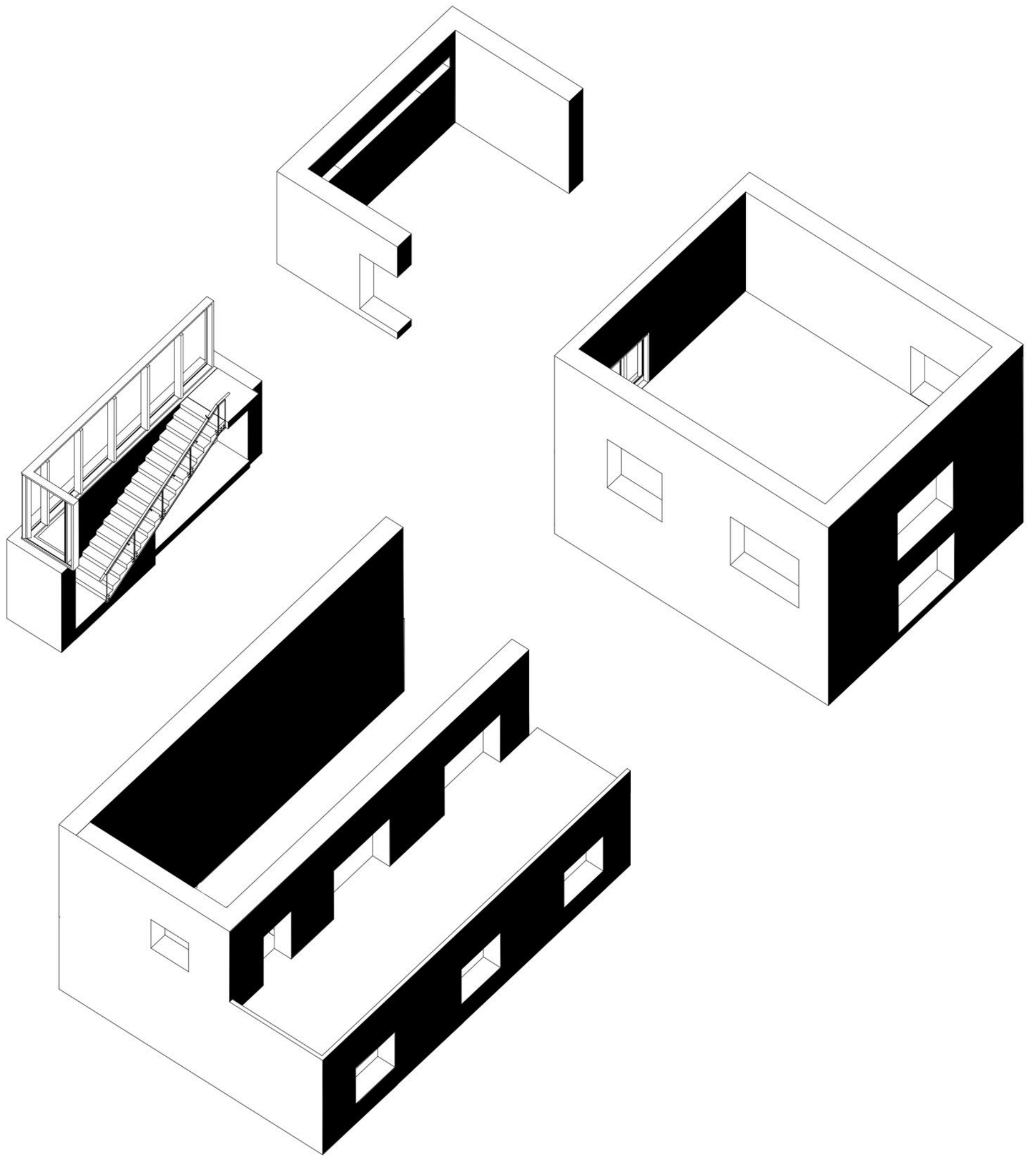
dům Václava a Jarmily
Maulových



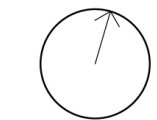
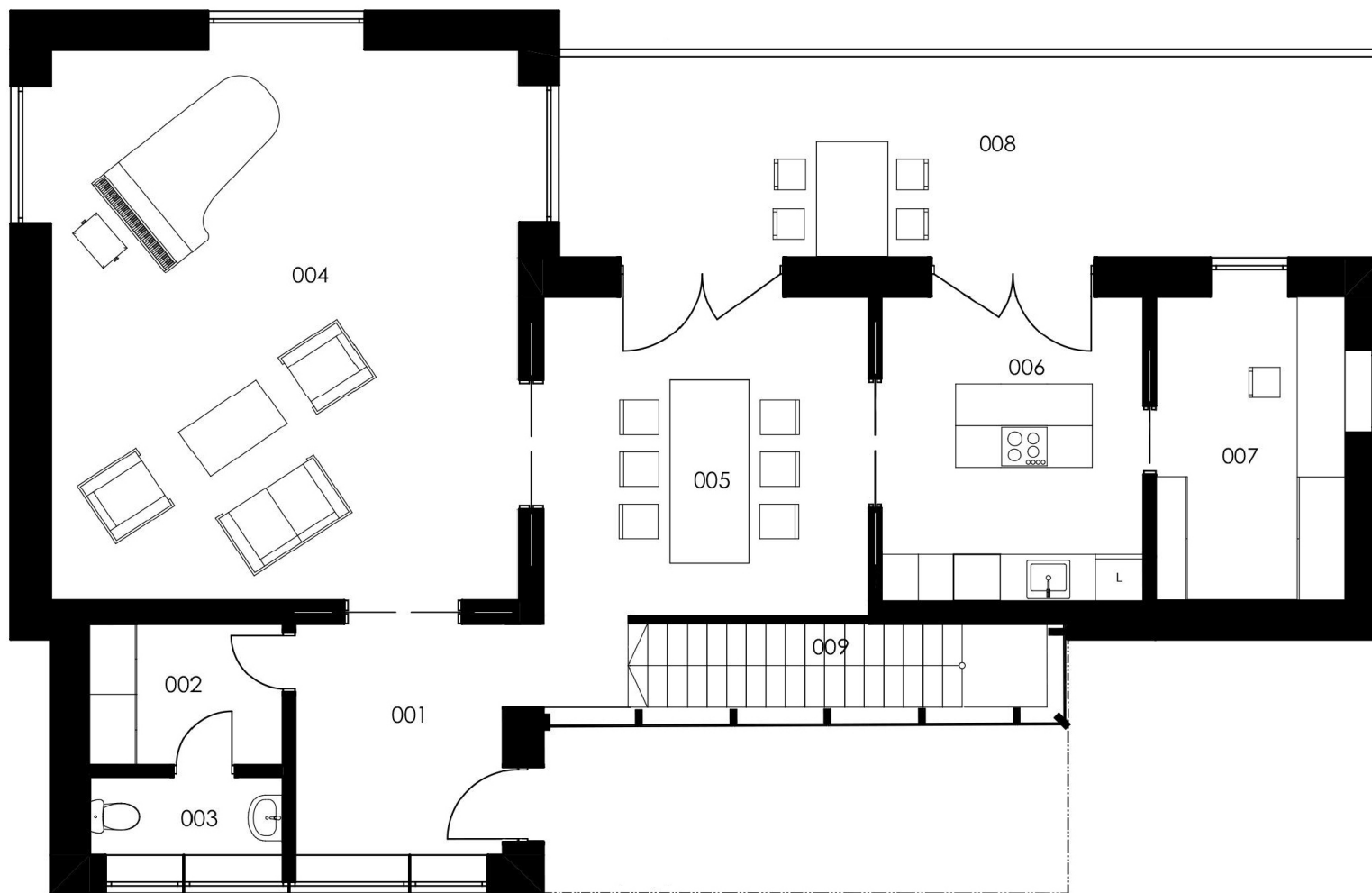
dům Karla Kytlicy

Nad Paťankou



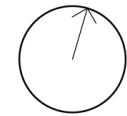
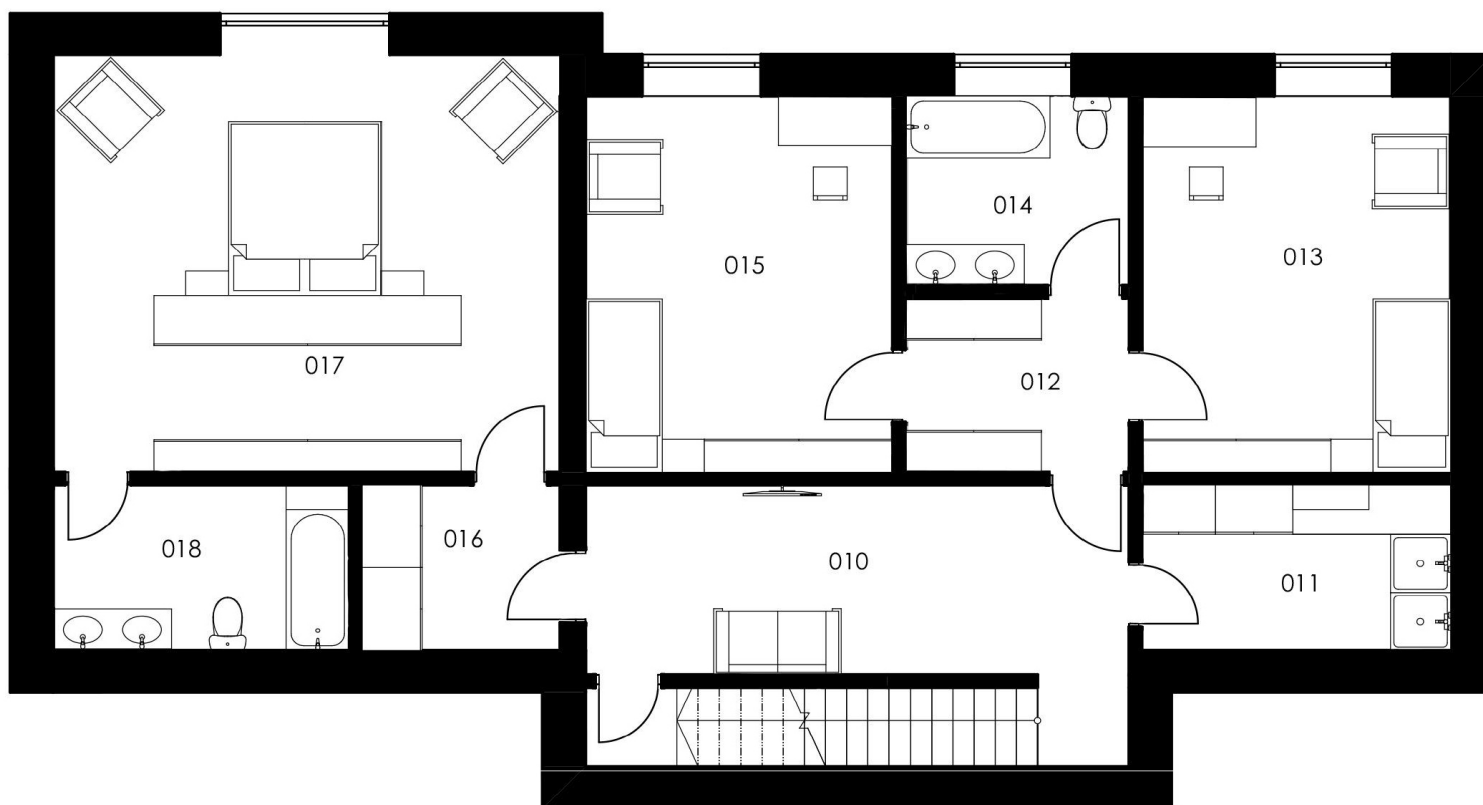


1.NP



- 001 Zádveří
- 002 Šatna
- 003 WC
- 004 Salón
- 005 Jídlna
- 006 Kuchyň
- 007 Pracovna
- 008 Terasa
- 009 Schodiště

1.PP



- 010 Chodba
- 011 Fotokomora
- 012 Šatna
- 013 Pokoj pro hosty
- 014 Koupelna
- 015 Dětský pokoj 1
- 016 Šatna
- 017 Ložnice rodičů
- 018 Koupelna





