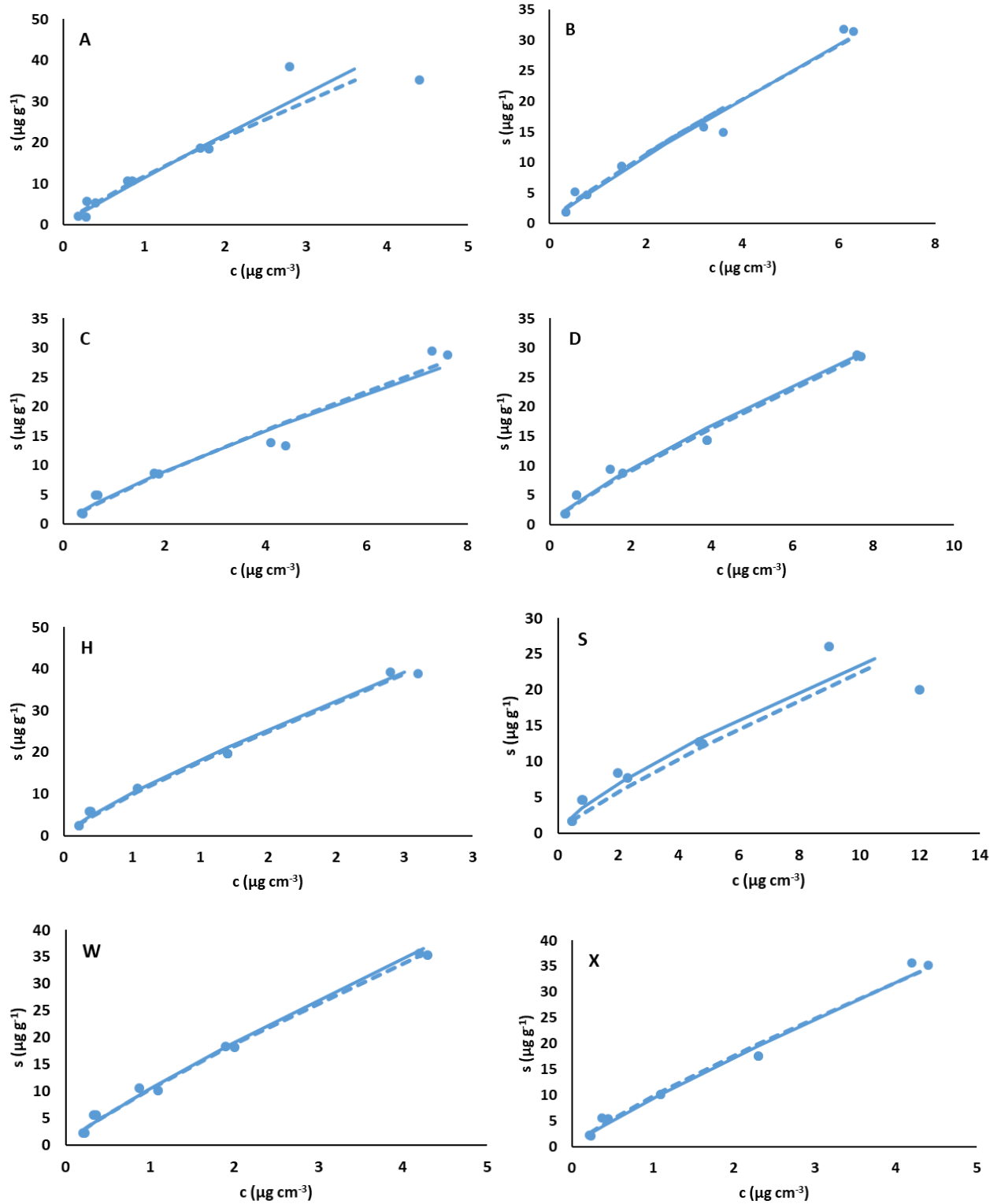


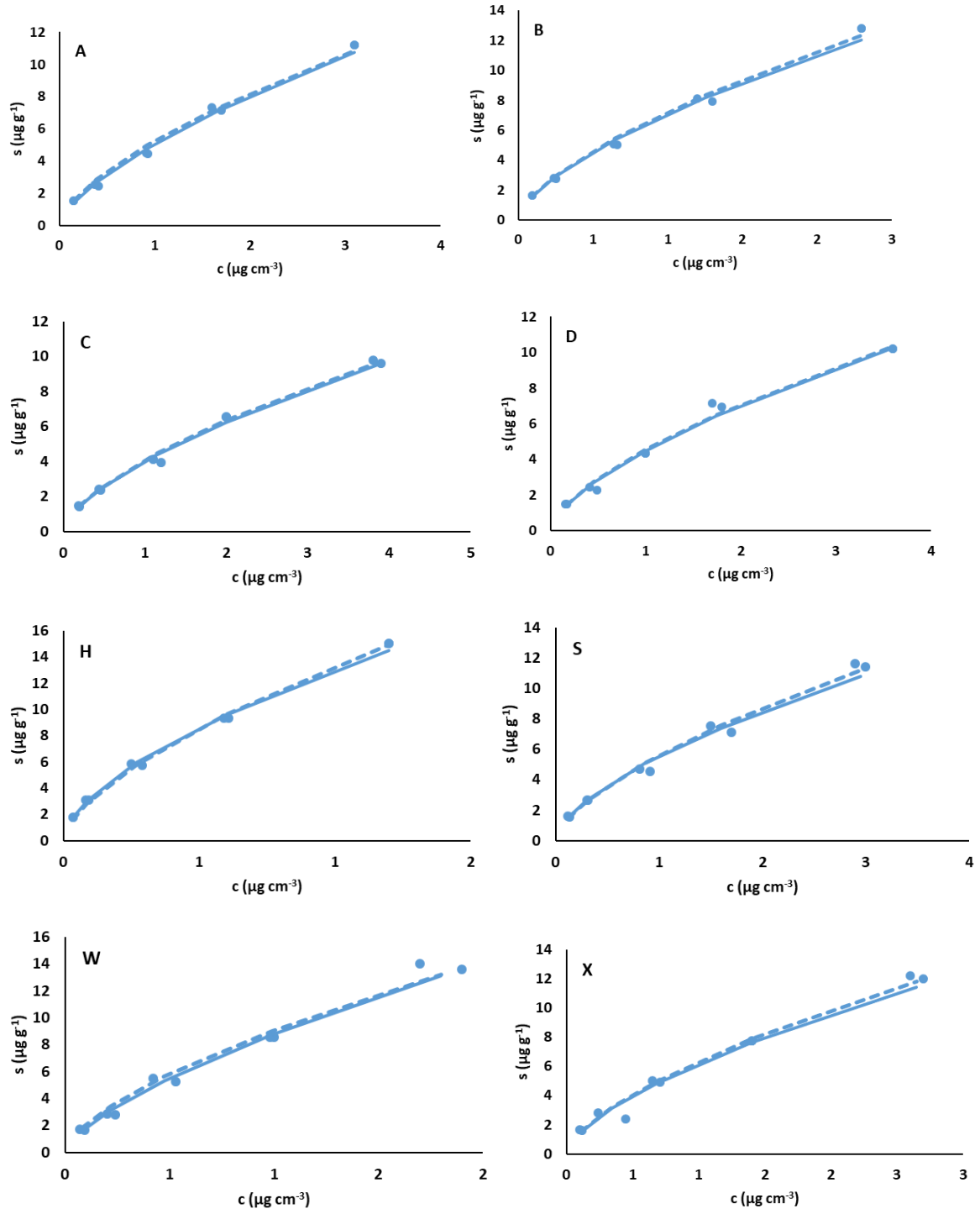
## 7. Appendix

Figure S1. The Freundlich sorption isotherms for 6 pharmaceutical substances in 8 soils. C - equilibrium concentration of a compound in solution ( $\mu\text{g cm}^{-3}$ ); s - Equilibrium compound concentration sorbed on solid ( $\mu\text{g g}^{-1}$ )

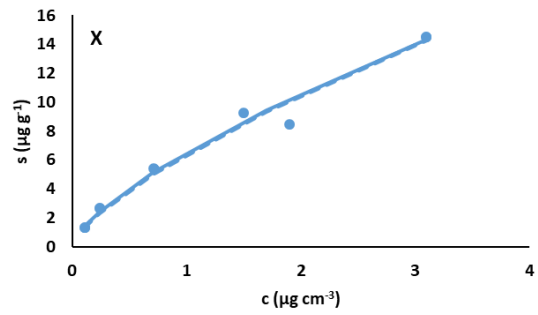
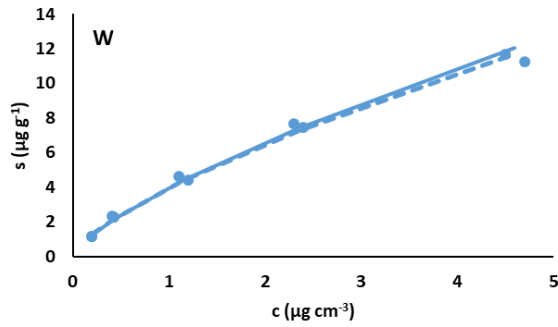
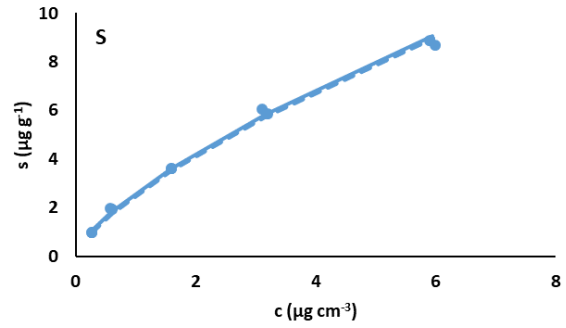
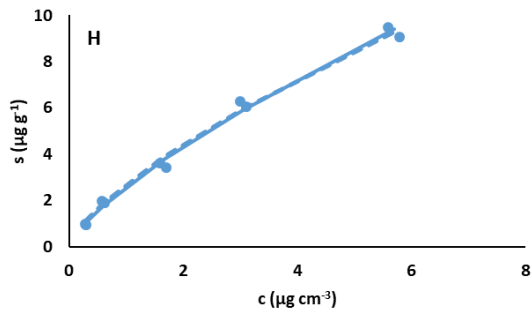
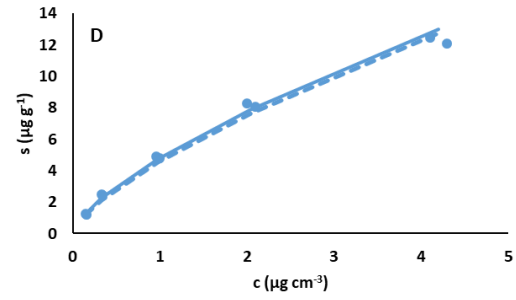
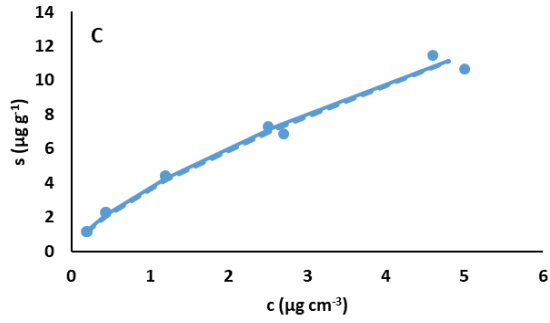
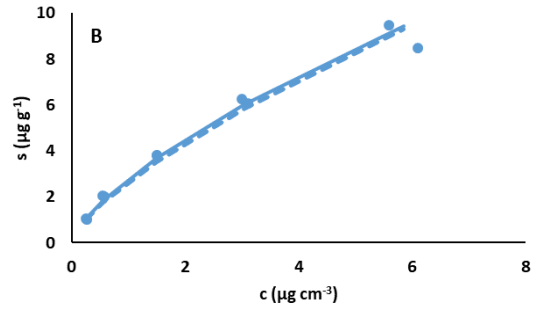
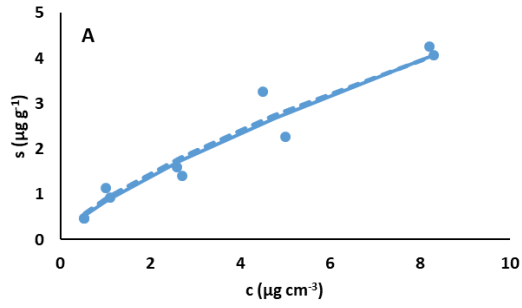
### Atorvastatin



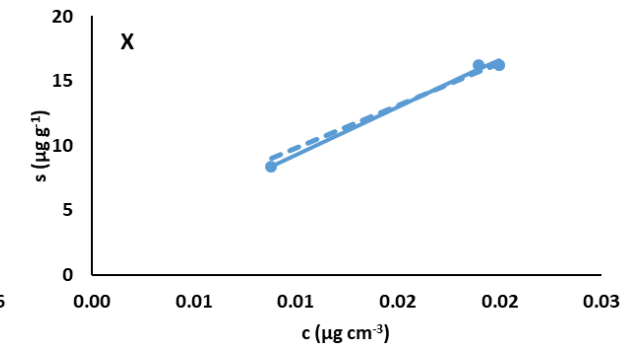
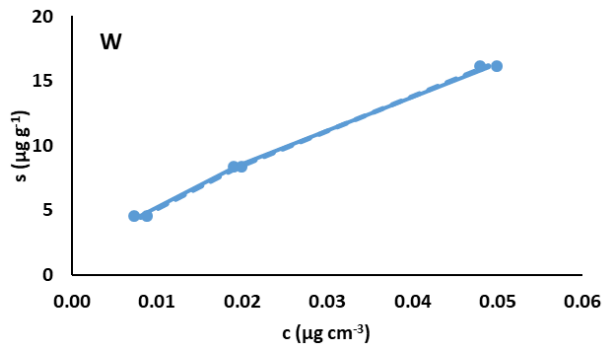
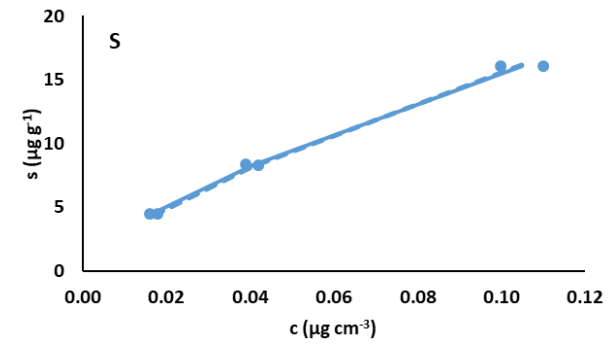
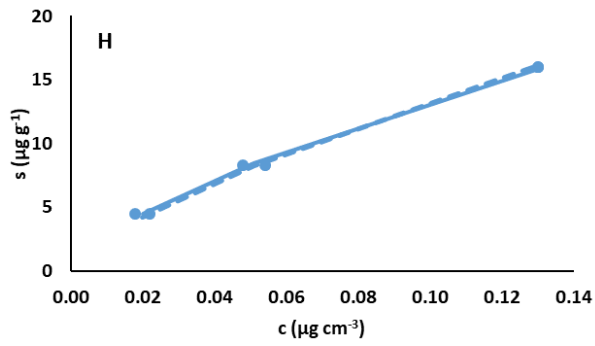
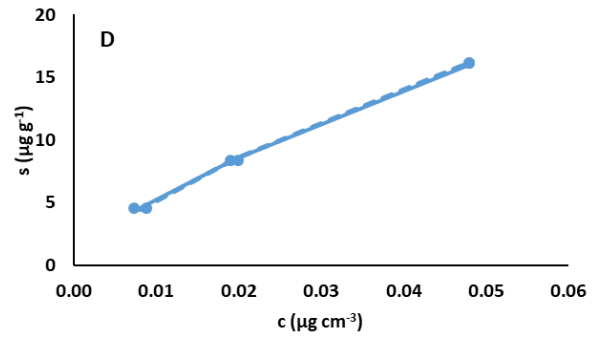
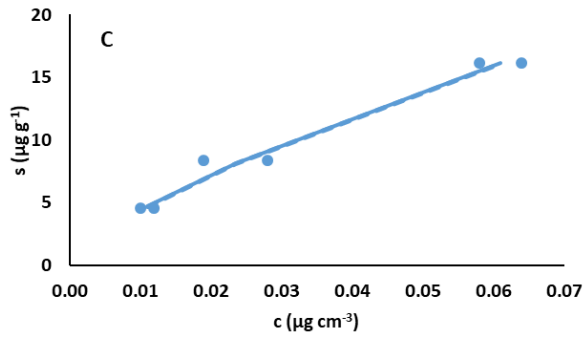
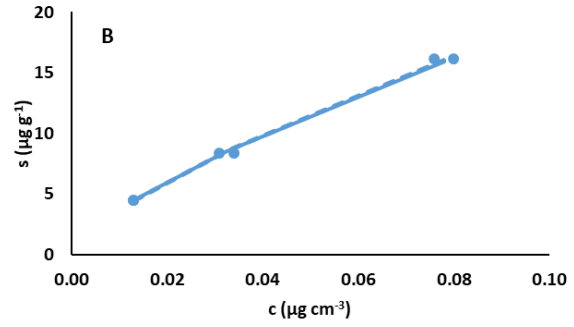
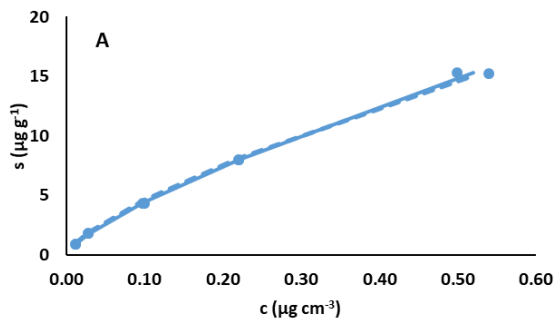
# Lamotrigine



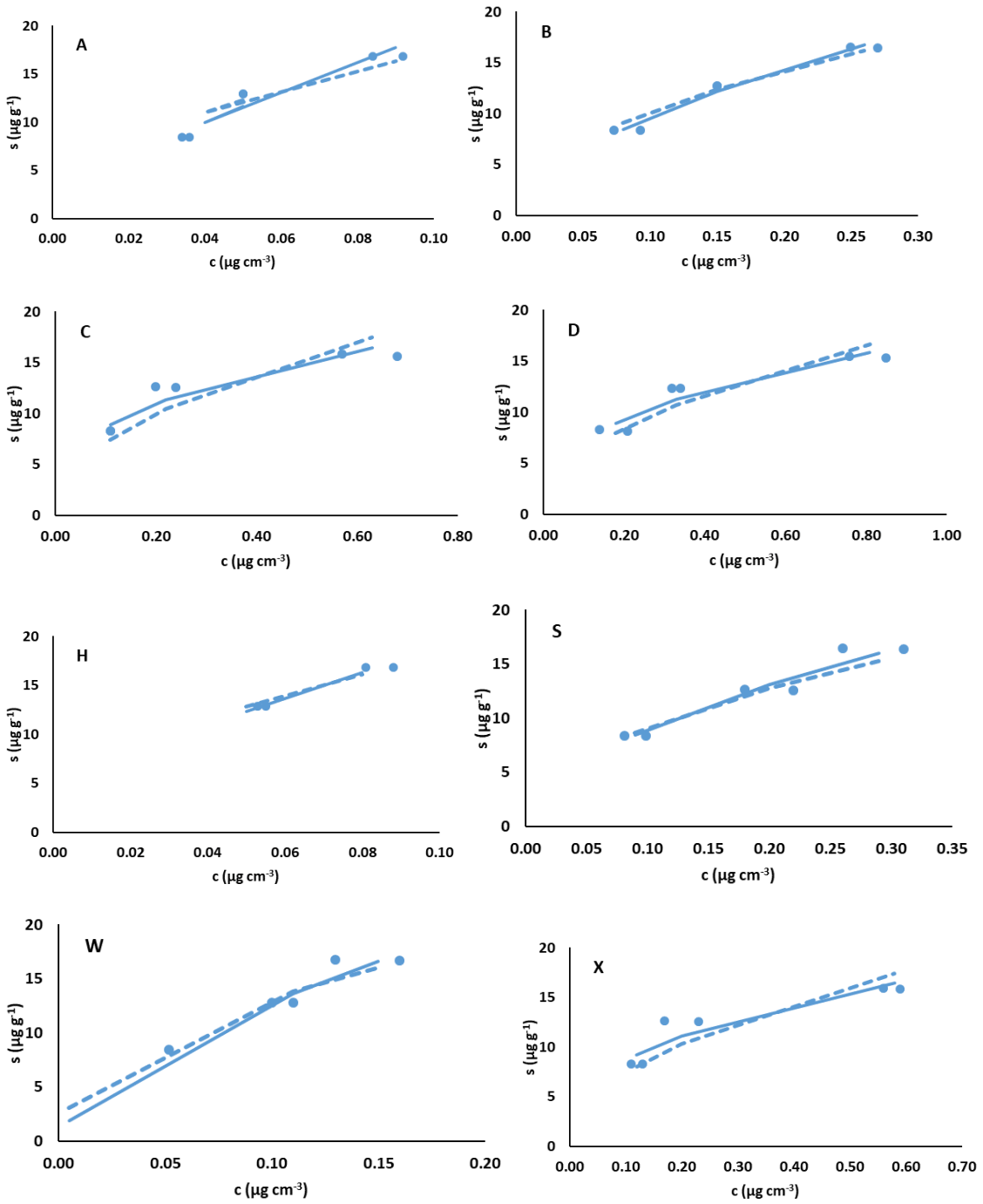
# Memantine



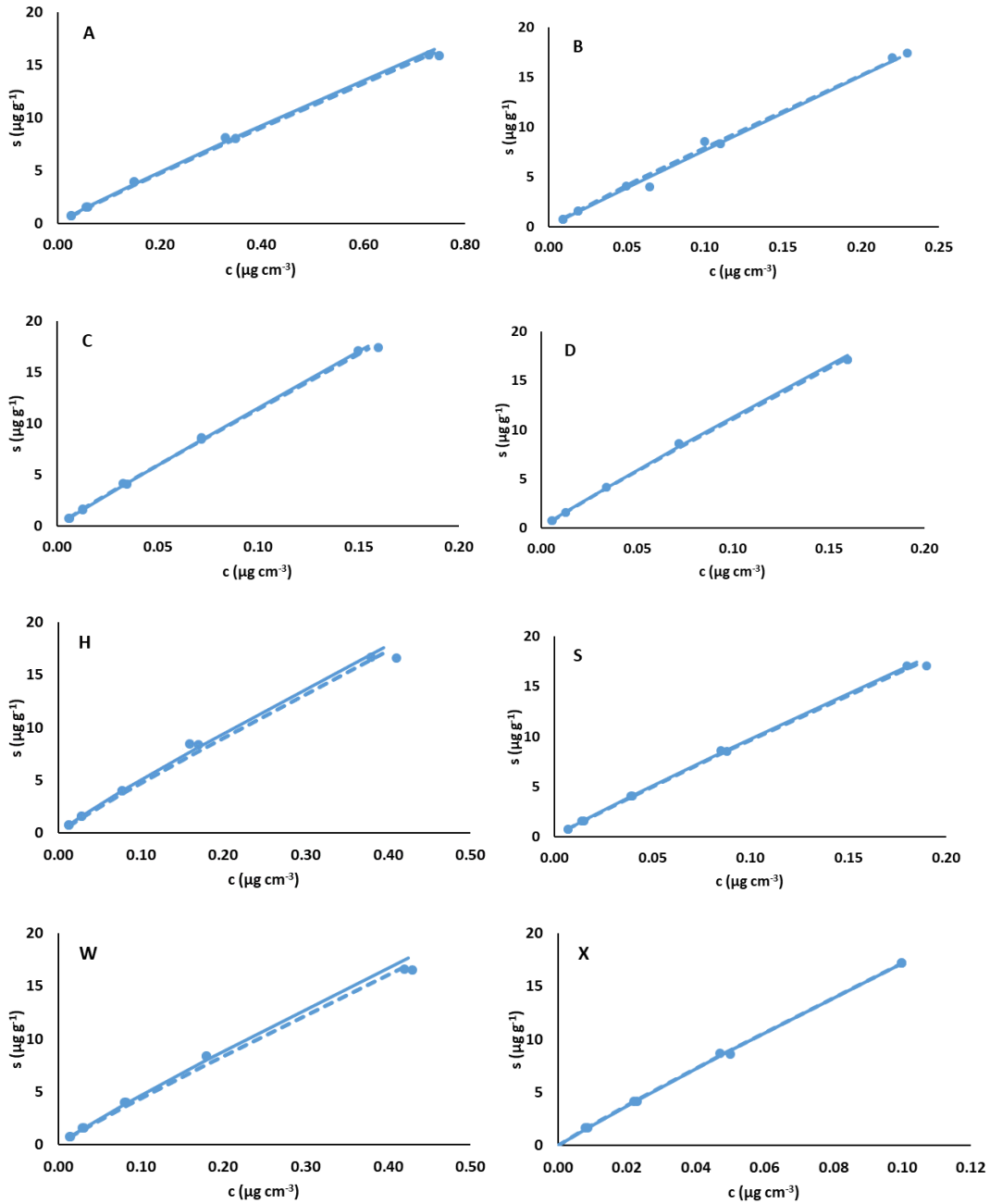
# Sertraline



# Telmisartan



## Venlafaxine



Data points - experimental data; dashed line - variable  $n$  value isotherms; line - the average  $n$  value for each compound.

sample	soil
A	Haplic Arenosol
B	Haplic Cambisol
C	Greyic Phaeozem
D	Haplic Chernozem

sample	soil
H	Haplic Cambisol
S	Haplic Luvisol
W	Dystric Cambisol
X	Stagnic Chernooem siltic