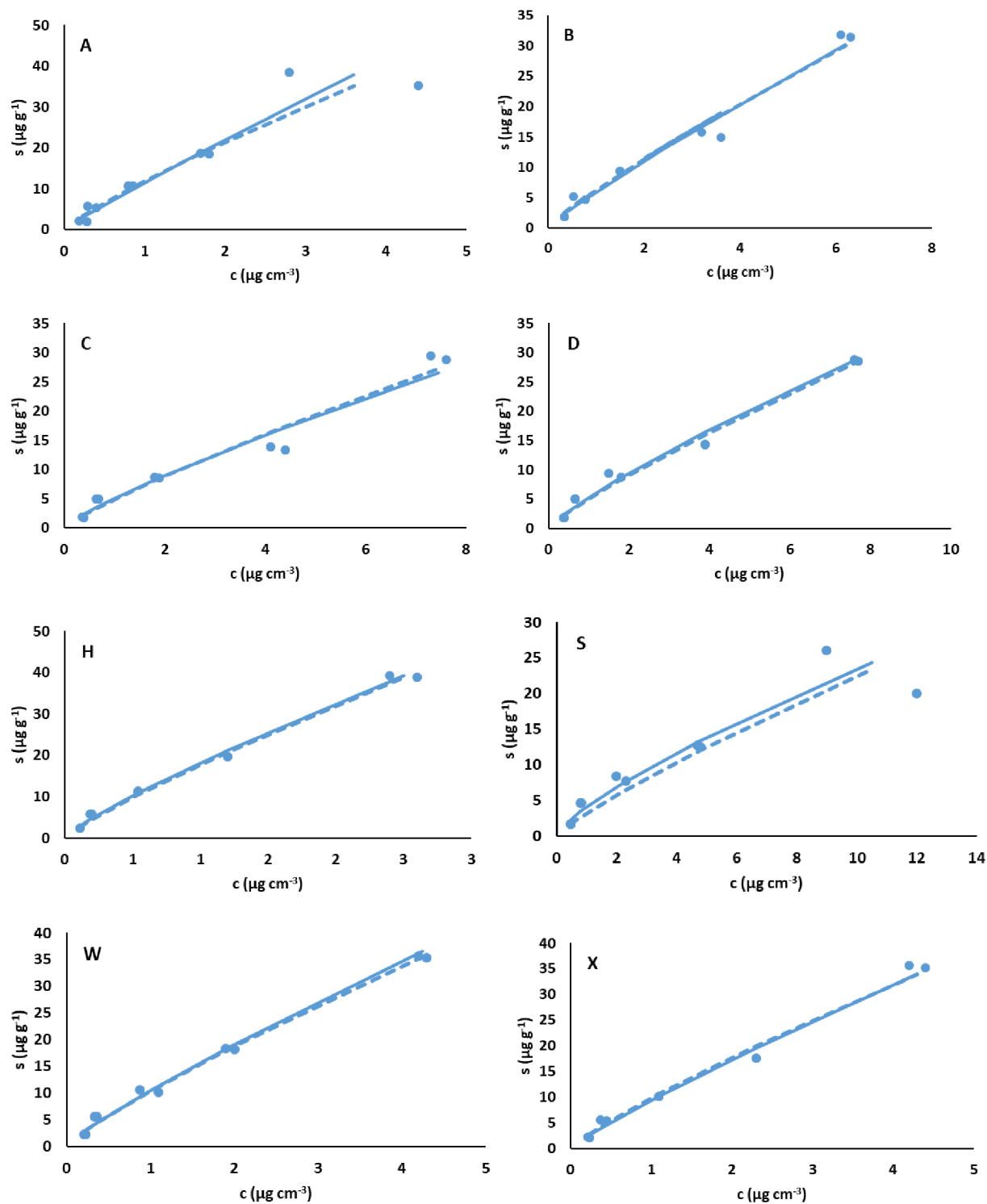


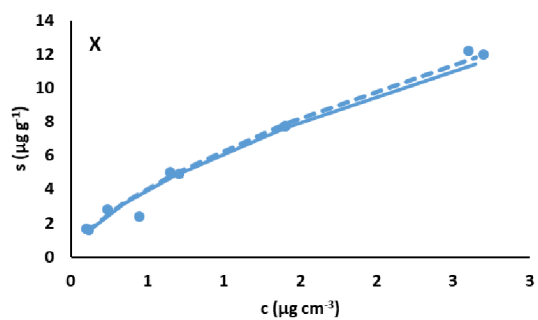
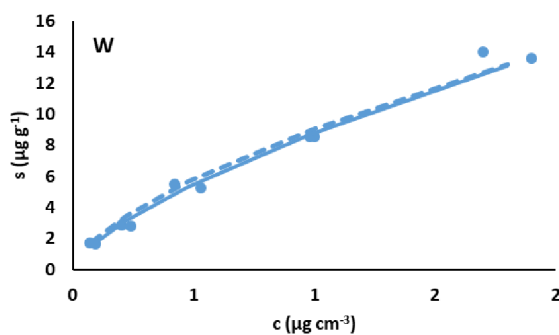
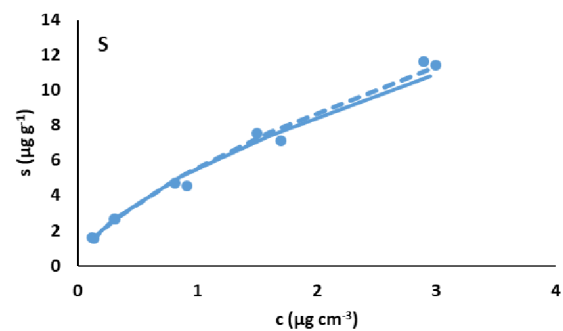
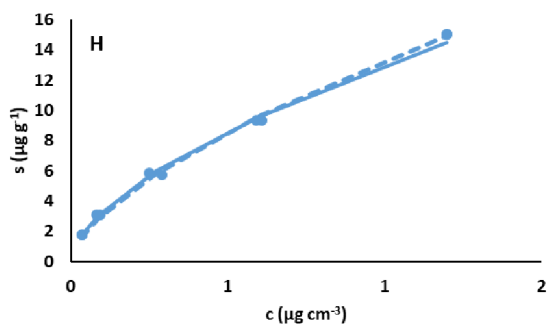
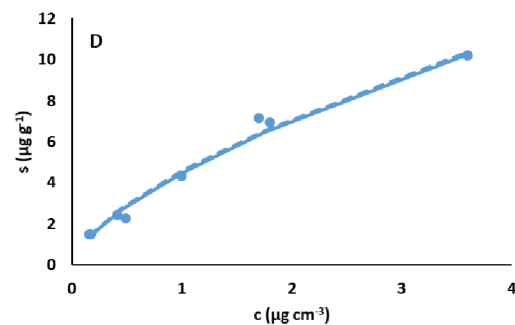
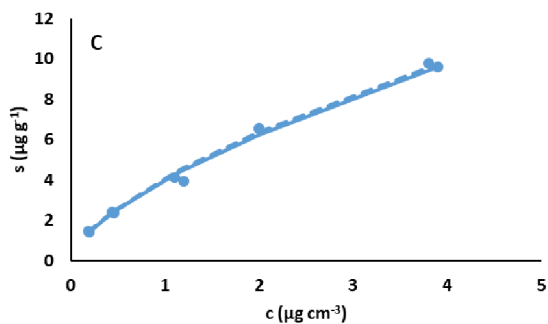
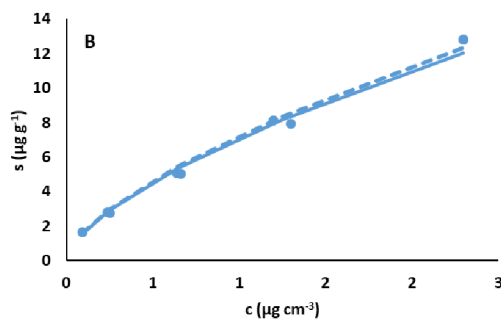
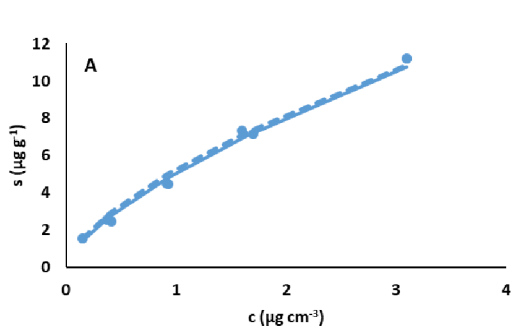
7. Appendix

Figure S1. The Freundlich sorption isotherms for 6 pharmaceutical substances in 8 soils. C - equilibrium concentration of a compound in solution ($\mu\text{g cm}^{-3}$); s - Equilibrium compound concentration sorbed on solid ($\mu\text{g g}^{-1}$)

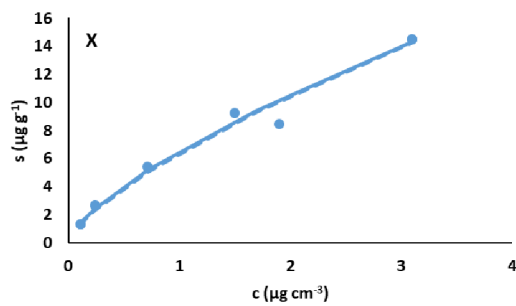
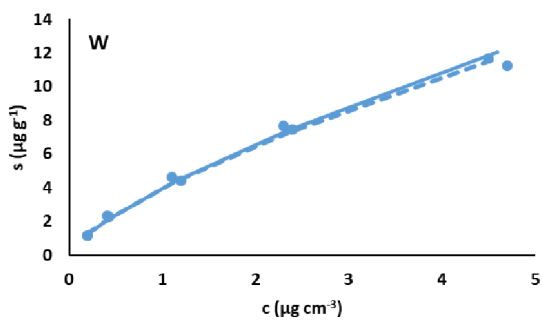
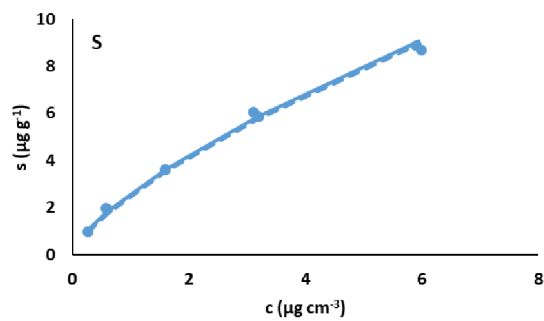
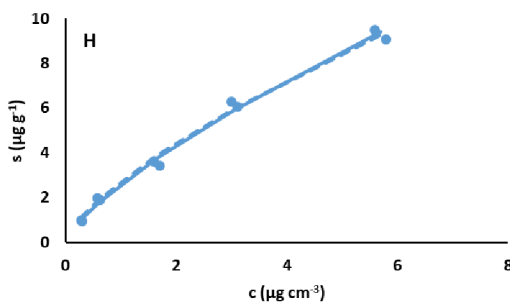
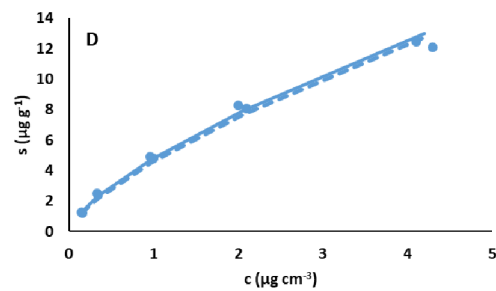
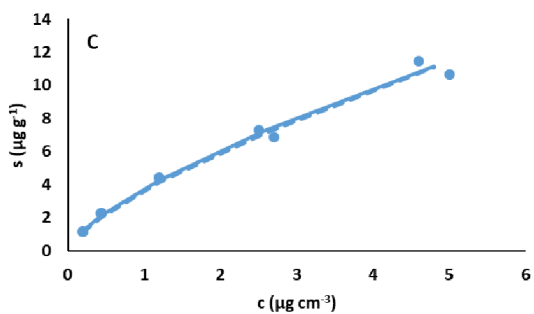
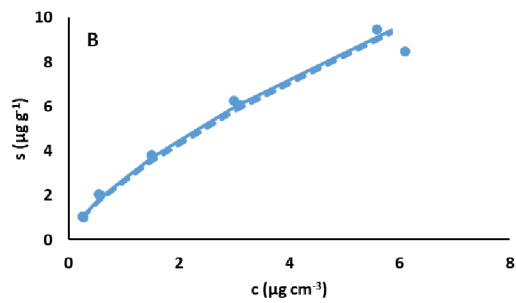
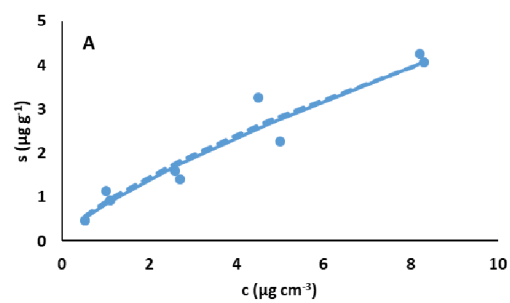
Atorvastatin



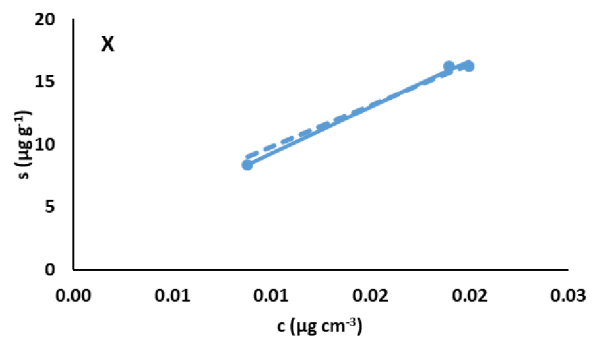
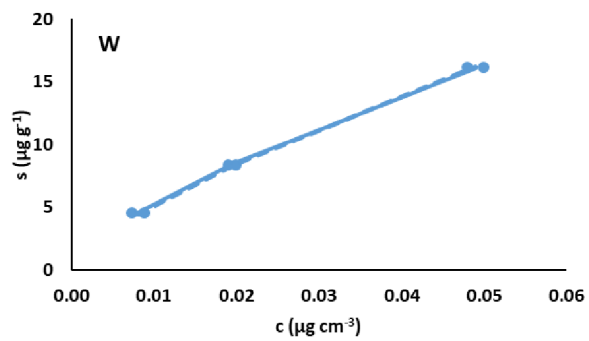
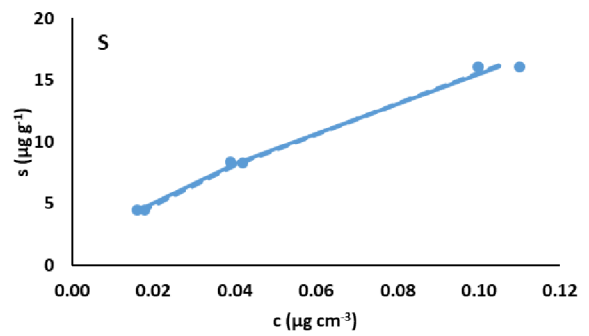
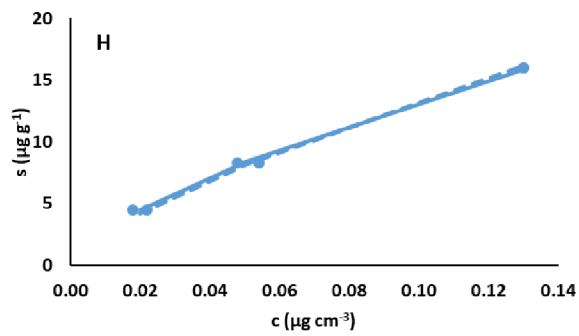
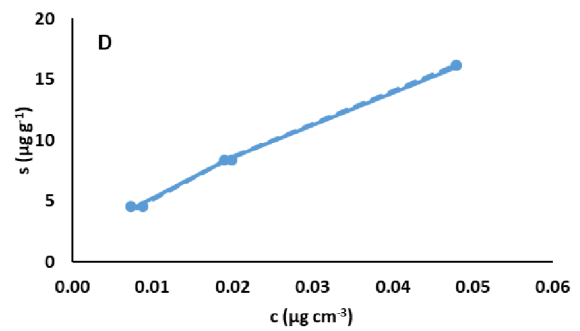
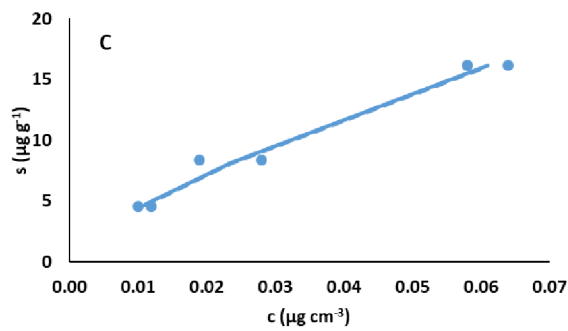
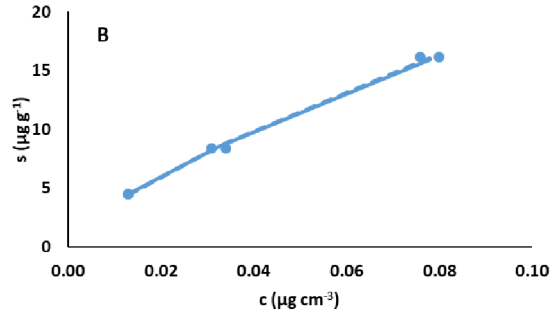
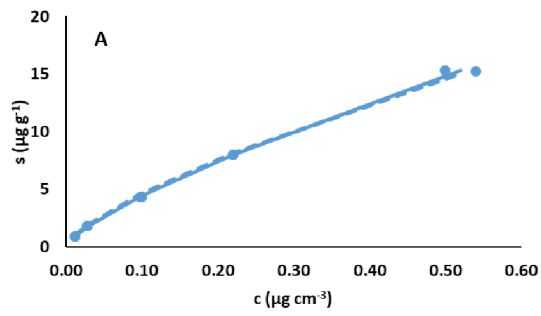
Lamotrigine



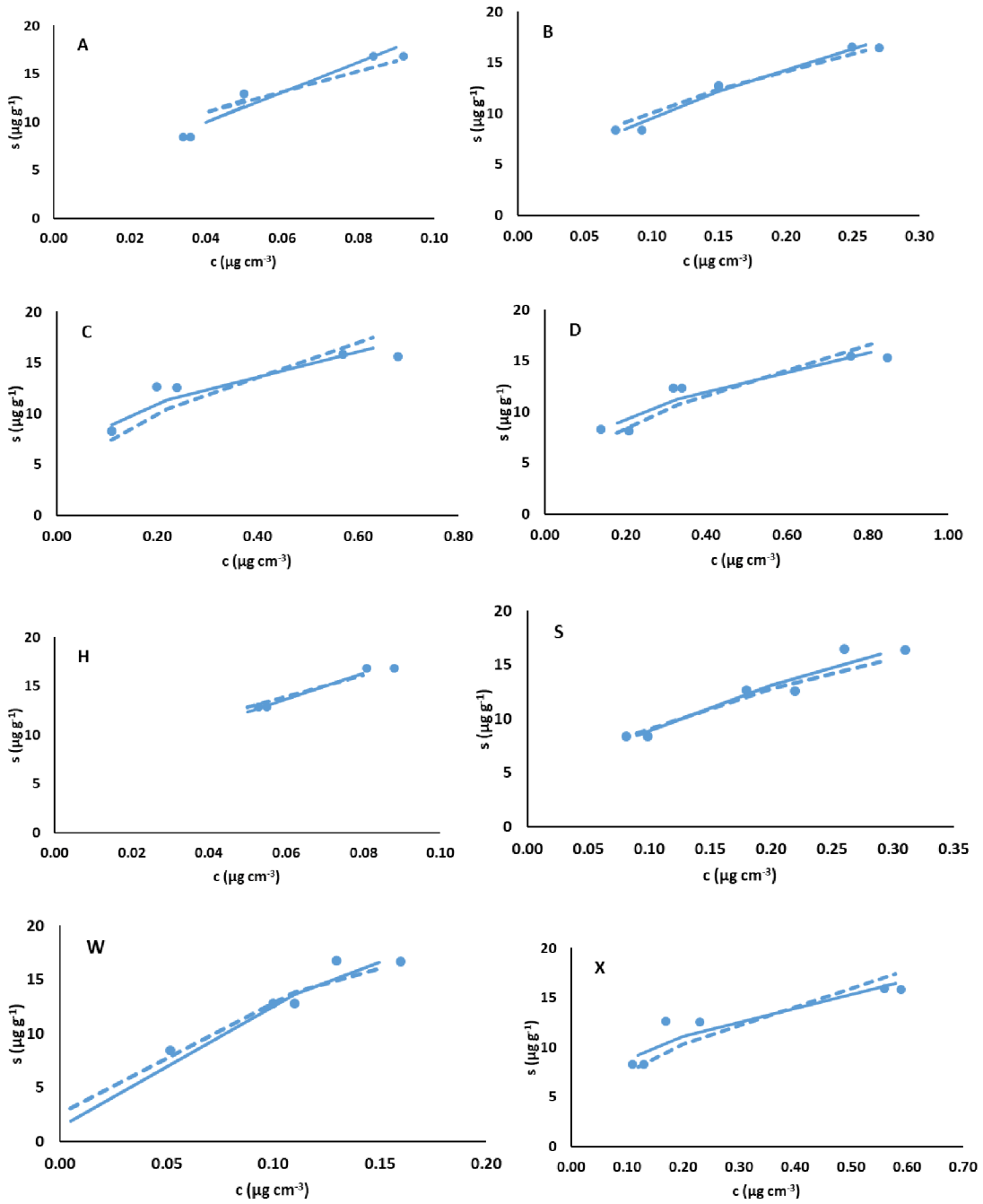
Memantine



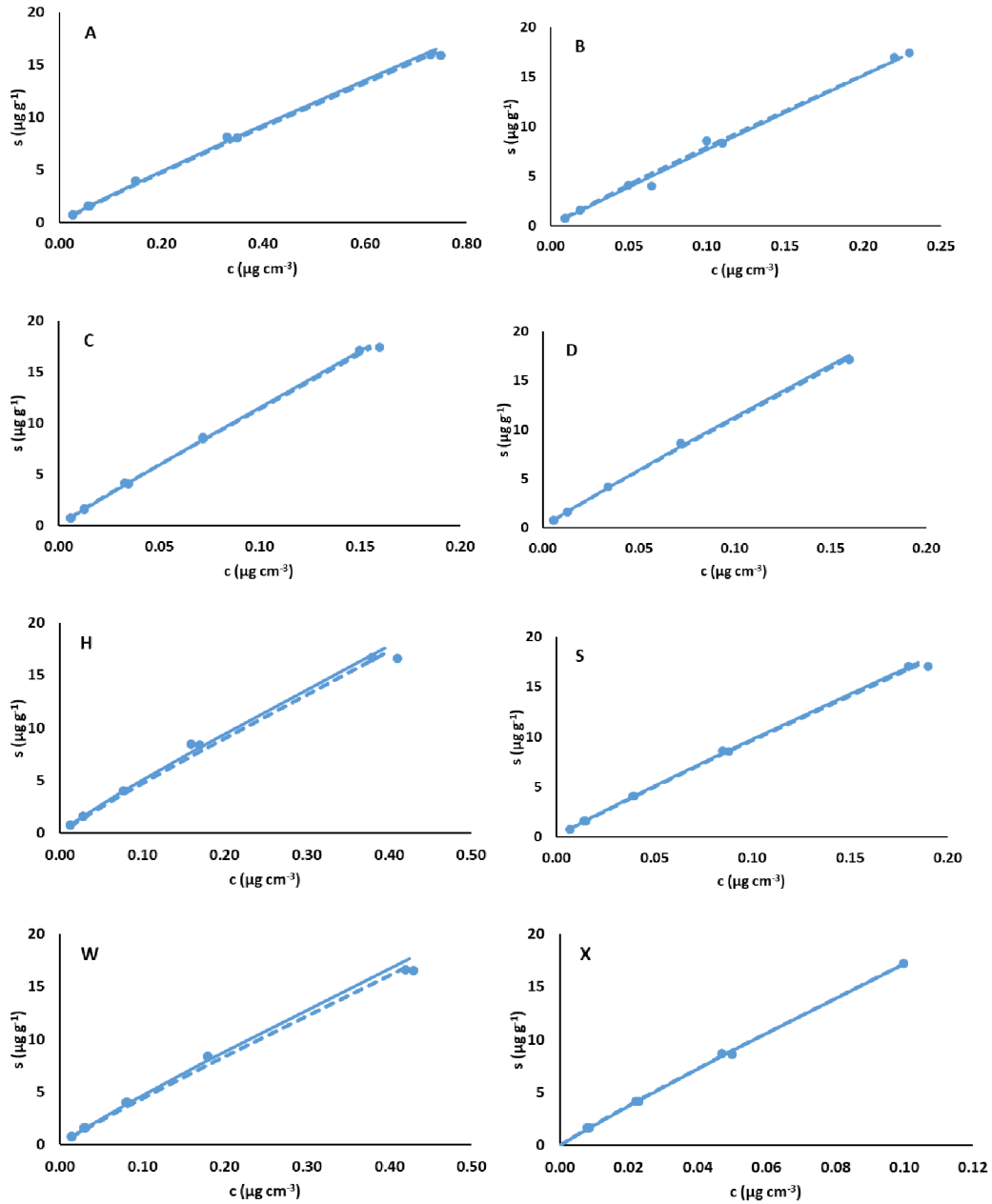
Sertraline



Telmisartan



Venlafaxine



Data points - experimental data; dashed line - variable n value isotherms; line - the average n value for each compound.

sample	soil
A	Haplic Arenosol
B	Haplic Cambisol
C	Greyic Phaeozem
D	Haplic Chernozem

sample	soil
H	Haplic Cambisol
S	Haplic Luvisol
W	Dystric Cambisol
X	Stagnic Chernooem siltic