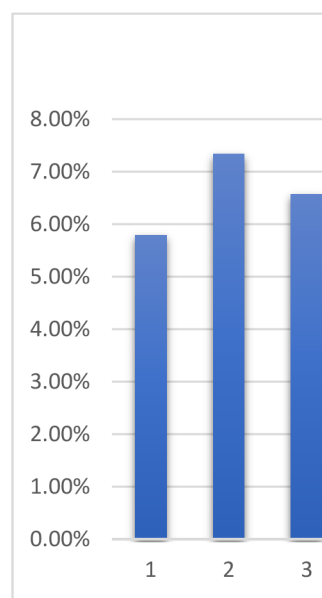
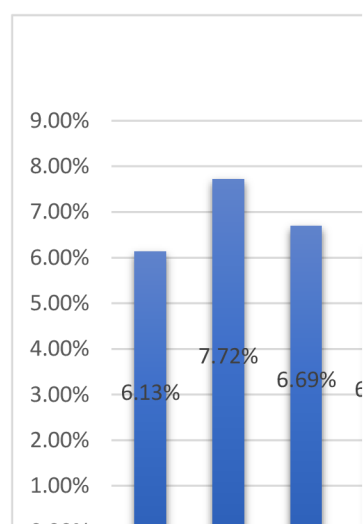


	2012	2013	2014	2015
<b>ROA</b>	5.79%	7.33%	6.57%	5.94%

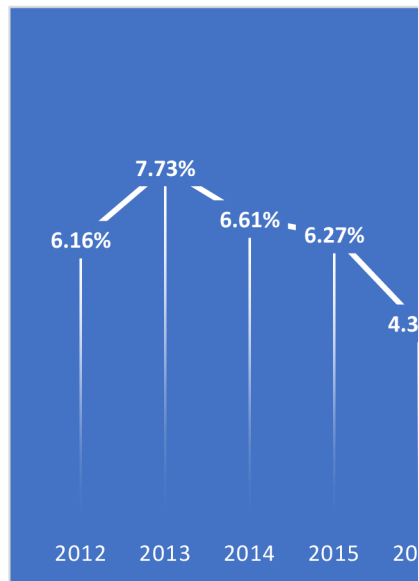


	2012	2013	2014	2015
<b>ROE</b>	6.13%	7.72%	6.69%	6.27%

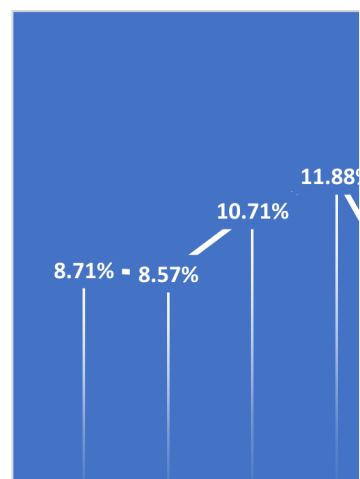




	2012	2013	2014	2015
<b>ROCE</b>	6.16%	7.73%	6.61%	6.27%

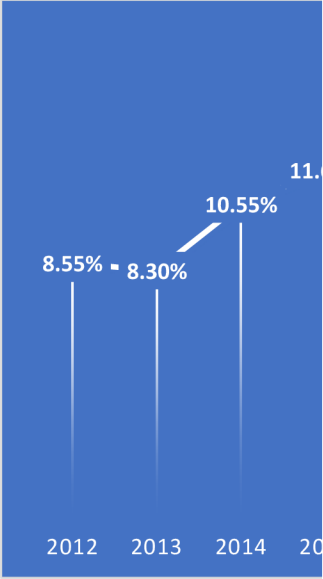


	2012	2013	2014	2015
<b>ROS</b>	8.71%	8.57%	10.71%	11.88%

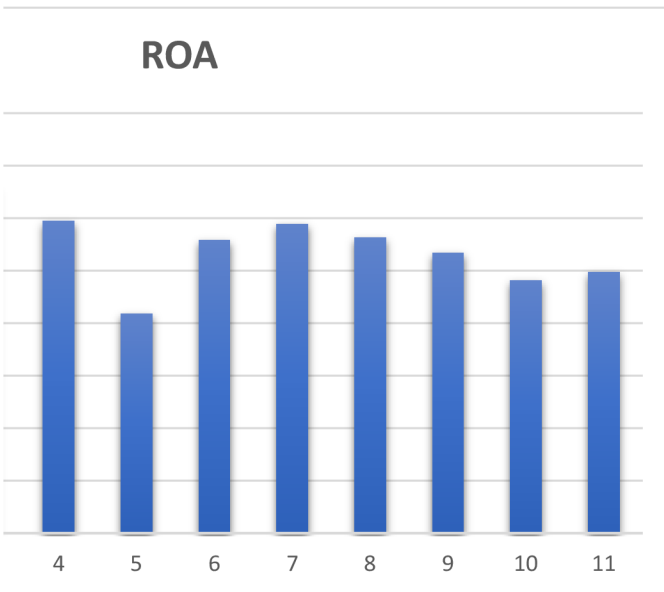




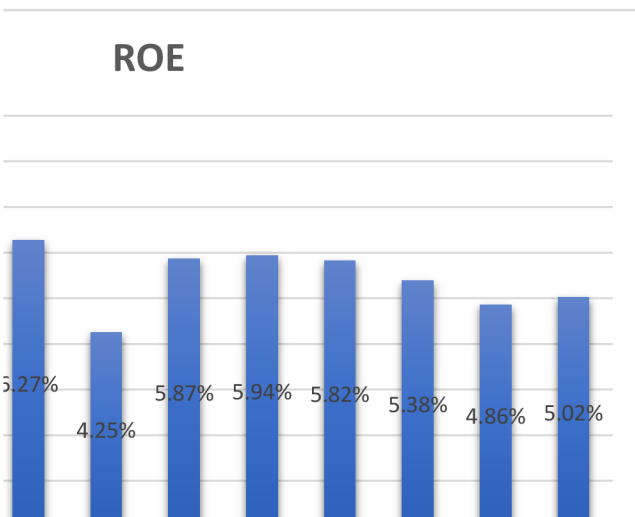
	2012	2013	2014	2015
ROC	8.55%	8.30%	10.55%	11.69%



2016	2017	2018	2019	2020	2021	2022
4.18%	5.58%	5.89%	5.63%	5.34%	4.81%	4.97%

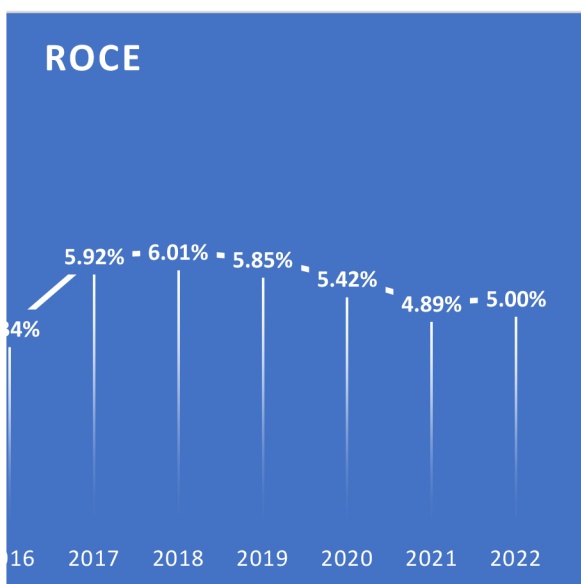


2016	2017	2018	2019	2020	2021	2022
4.25%	5.87%	5.94%	5.82%	5.38%	4.86%	5.02%

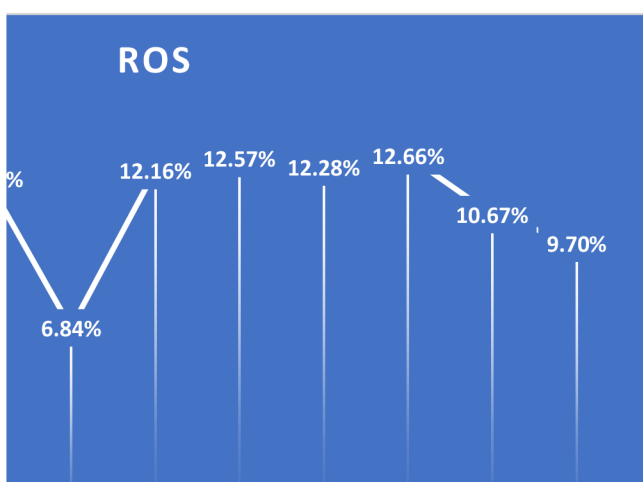


2015	2016	2017	2018	2019	2020	2021	2022
------	------	------	------	------	------	------	------

2016	2017	2018	2019	2020	2021	2022
4.34%	5.92%	6.01%	5.85%	5.42%	4.89%	5.00%

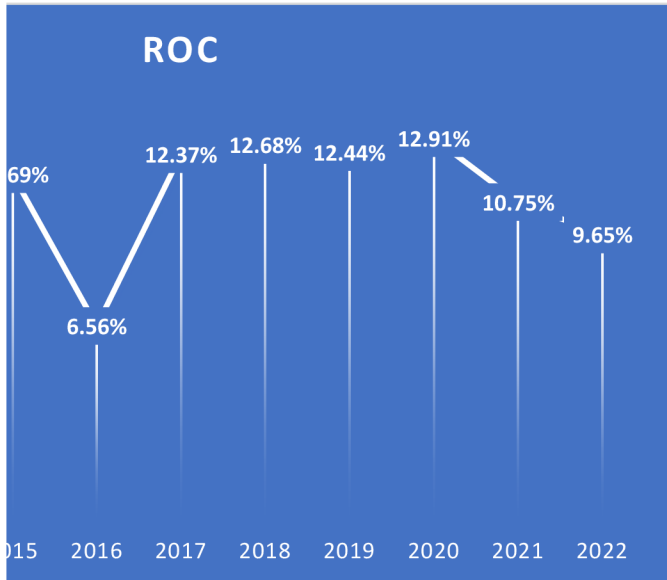


2016	2017	2018	2019	2020	2021	2022
6.84%	12.16%	12.57%	12.28%	12.66%	10.67%	9.70%

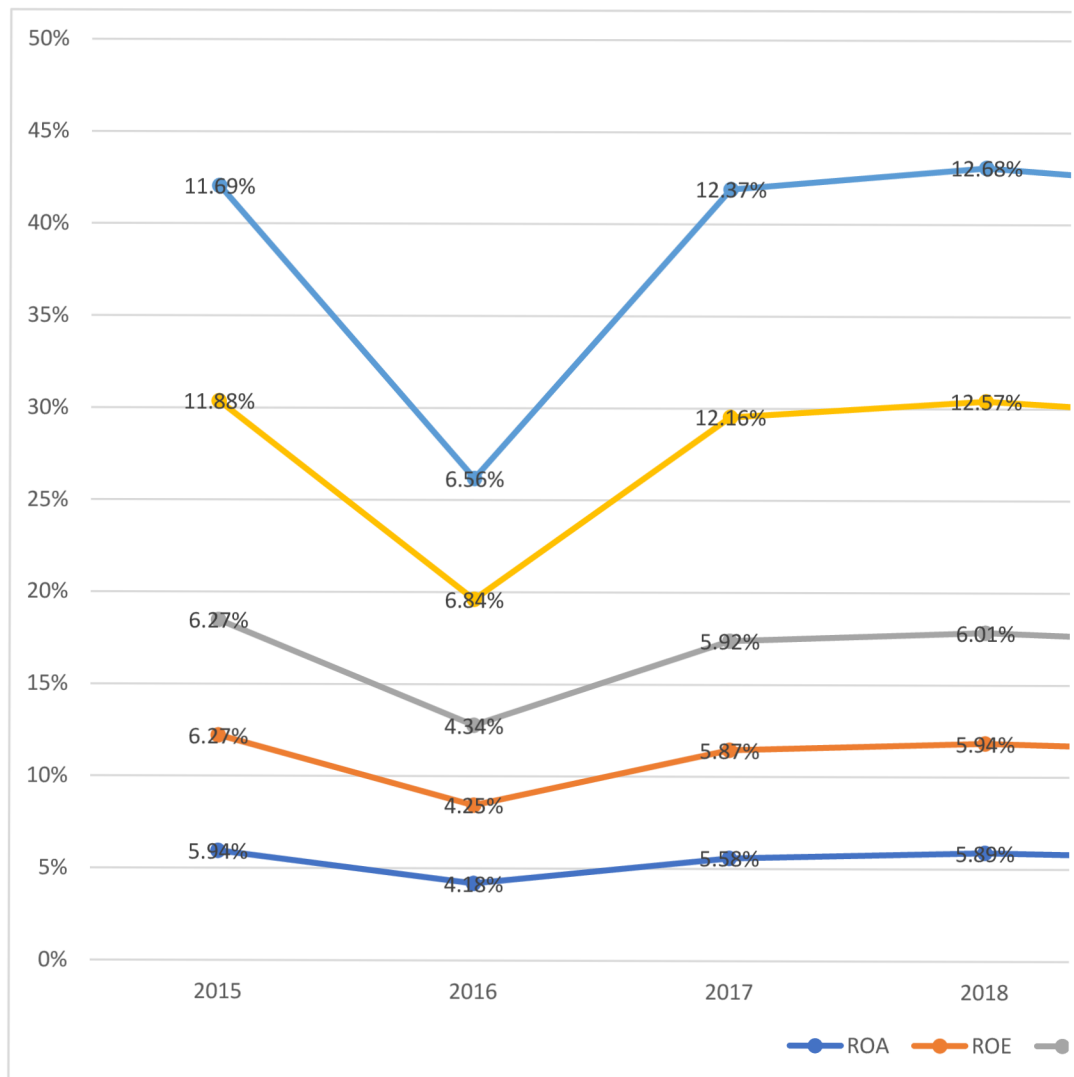


5 2016 2017 2018 2019 2020 2021 2022

2016	2017	2018	2019	2020	2021	2022
6.56%	12.37%	12.68%	12.44%	12.91%	10.75%	9.65%



	2015	2016	2017	2018
<b>ROA</b>	5.94%	4.18%	5.58%	5.89%
<b>ROE</b>	6.27%	4.25%	5.87%	5.94%
<b>ROCE</b>	6.27%	4.34%	5.92%	6.01%
<b>ROS</b>	11.88%	6.84%	12.16%	12.57%
<b>ROC</b>	11.69%	6.56%	12.37%	12.68%









2019	2020	2021	2022
5.63%	5.34%	4.81%	4.97%
5.82%	5.38%	4.86%	5.02%
5.85%	5.42%	4.89%	5.00%
12.28%	12.66%	10.67%	9.70%
12.44%	12.91%	10.75%	9.65%

