

Balance of Payments of the Republic of Kazakhstan: analytic presentation
(in USD million)

<i>Column1</i>	2005	2006	2007	2008	2009	2010	2011	2012	2013	2014	2015
Current Account	-1,036.0	-1,999.9	-8,372.3	6,250.1	-4,120.8	1,385.7	10,198.6	1,057.7	1,273.5	6,139.8	-5,134.4
Trade balance	10,361.5	14,691.7	15,226.2	33,612.0	15,003.9	28,500.2	44,844.1	38,145.2	34,792.3	36,245.5	12,671.4
Exports	28,299.2	38,761.4	48,348.1	71,964.2	43,923.4	61,391.7	85,193.9	86,931.1	85,595.4	80,309.5	46,515.9
Imports	17,937.7	24,069.7	33,121.9	38,352.2	28,919.5	32,891.5	40,349.8	48,785.8	50,803.2	44,064.0	33,844.4
Services	-5,434.0	-6,134.2	-8,443.2	-6,926.5	-5,978.0	-7,249.6	-6,635.2	-7,929.9	-7,073.7	-6,298.1	-5,106.3
Exports	2,087.3	2,676.9	3,424.8	4,292.4	4,103.7	4,119.0	4,337.7	4,828.2	5,384.7	6,618.1	6,476.0
Imports	7,521.3	8,811.1	11,868.1	11,218.9	10,081.7	11,368.5	10,972.9	12,758.1	12,458.4	12,916.2	11,582.2
Primary income	-5,555.5	-9,350.0	-12,945.7	-19,375.3	-12,417.5	-19,375.6	-27,745.1	-28,117.1	-25,147.7	-22,476.7	-11,149.4
Compensation of employees, net	-728.4	-948.4	-1,203.2	-1,452.0	-1,304.8	-1,406.4	-1,730.2	-1,927.8	-1,803.7	-1,785.3	-1,612.3
Investment income, net	-4,969.6	-8,544.1	-11,884.9	-18,063.1	-11,252.4	-18,109.0	-26,154.6	-26,329.0	-23,483.8	-20,831.2	-9,676.9
Income receivable	844.7	1,623.3	3,661.5	3,595.0	3,033.3	2,556.9	2,088.1	1,945.9	2,176.7	2,071.9	2,113.2
Income on direct investment	9.3	10.9	268.8	170.9	68.0	303.5	155.9	194.9	347.6	309.4	583.6
Income on portfolio investment	234.6	493.8	857.0	914.1	863.2	716.6	901.3	959.9	1,094.4	1,183.0	1,035.4
Income on other investment	600.8	1,118.6	2,535.7	2,510.0	2,102.2	1,536.8	1,031.0	791.1	734.7	579.5	494.1
<i>of which Interest on international reserves and assets of the National Fund</i>	410.0	822.3	1,461.1	1,189.1	820.9	827.8	1,006.4	1,028.0	1,162.1	1,176.8	1,027.5
Income payable	5,814.3	10,167.5	15,546.4	21,658.1	14,285.7	20,665.9	28,242.8	28,274.9	25,660.5	22,903.1	11,790.0
Income on direct investment	4,804.8	7,898.2	11,514.3	17,315.7	10,960.9	17,997.1	25,213.2	24,753.0	22,510.9	19,763.9	9,197.4
Income on portfolio investment	154.3	341.9	394.5	321.4	251.4	922.8	1,751.2	2,070.3	1,590.9	1,667.1	1,639.3
Income on other investment	855.2	1,927.4	3,637.6	4,021.0	3,073.4	1,746.1	1,278.4	1,451.6	1,558.7	1,472.1	953.3
Other primary income, net	142.5	142.5	142.5	139.8	139.8	139.8	139.8	139.8	139.8	139.8	139.8
Secondary income	-408.0	-1,207.4	-2,209.6	-1,060.1	-729.2	-489.2	-265.1	-1,040.6	-1,297.3	-1,330.8	-1,550.2
Capital account balance	4.5	30.8	35.8	19.3	31.4	7,898.0	31.8	15.4	-6.4	29.3	131.7
Financial account (excluding reserve assets)	2,293.8	-11,803.4	-1,993.6	1,680.5	-3,919.2	10,631.8	9,531.1	4,319.3	-303.2	-7,094.1	-9,324.4
Direct investment	-2,119.1	-6,689.4	-8,030.5	-13,114.7	-10,083.3	-3,665.2	-8,582.6	-11,855.9	-8,034.4	-4,591.1	-2,857.7
Net acquisition of financial assets	427.0	921.8	3,942.3	3,704.1	4,192.6	3,790.9	5,177.6	1,792.3	1,976.9	2,633.5	3,315.1
Net incurrence of liabilities	2,546.1	7,611.2	11,972.8	16,818.9	14,275.9	7,456.1	13,760.3	13,648.1	10,011.3	7,224.6	6,172.8
Portfolio investment	3,952.7	4,501.4	4,583.1	9,377.5	-3,093.1	-8,470.3	12,868.1	17,387.9	6,033.6	1,038.8	-5,887.9
Net acquisition of financial assets	5,157.1	9,176.7	4,101.3	7,277.6	-1,868.8	7,202.1	13,590.3	15,068.2	8,503.0	6,473.8	-9,524.5
Central bank and general government	2,970.9	5,847.6	6,144.8	6,408.8	-3,315.3	7,404.8	12,204.6	14,549.6	7,779.5	6,800.0	-8,358.4
Banks	1,762.5	1,883.0	-1,875.5	-335.6	163.1	61.7	179.6	238.6	556.6	-218.5	-819.8
Other sectors	423.7	1,446.1	-168.0	1,204.4	1,283.4	-264.4	1,206.1	280.0	167.0	-107.7	-346.3
Net incurrence of liabilities	1,204.4	4,675.4	-481.8	-2,099.9	1,224.3	15,672.4	722.1	-2,319.7	2,469.4	5,434.9	-3,636.6
Central bank and general government	39.6	773.8	-2,111.4	-136.3	334.8	-107.8	-241.6	-46.5	0.9	1,969.6	3,355.2
Banks	1,194.2	2,948.3	610.2	-1,540.7	526.0	8,025.9	-170.1	-1,980.9	-631.8	-809.9	-872.3
Other sectors	-29.4	953.2	1,019.4	-422.9	363.5	7,754.3	1,133.7	-292.3	3,100.3	4,275.2	-6,119.5
Financial derivatives, net	112.6	67.8	369.1	-163.7	-66.2	3.9	-126.7	108.9	103.7	-37.1	-106.8
Other investment	347.6	-9,683.2	1,084.7	5,581.5	9,323.3	22,763.5	5,372.3	-1,321.7	1,593.8	-3,504.8	-472.0
Other equity, net	3.7	217.3	193.7	96.8	104.3	4.5	8.2	14.7	195.1	208.7	86.3
Medium- and long term debt instruments	-2,273.9	-14,672.4	-11,622.0	-1,181.3	3,896.5	15,588.9	0.9	-4,130.1	-5,273.9	-2,506.1	-4,241.0
Net acquisition of financial assets	680.4	4,179.0	4,889.1	2,100.0	1,953.2	761.4	1,068.9	1,775.4	267.5	488.0	-2,108.1
Central bank and general government	0.0	-1.2	-1.2	-1.2	-1.2	-1.2	0.6	-2.7	5.5	235.4	-38.8
Banks	589.5	4,019.7	3,883.8	1,246.7	1,243.0	1,111.1	-278.5	-4.4	-227.1	-773.5	-179.7
Other sectors	90.8	160.5	1,006.6	854.5	711.4	-348.5	1,346.8	1,782.6	489.1	1,026.1	-1,889.6
Net incurrence of liabilities	2,954.3	18,851.5	16,511.1	3,281.2	-1,943.3	-14,827.4	1,068.0	5,905.5	5,541.4	2,994.0	2,132.9
Central bank and general government	-827.3	-0.5	-57.8	33.5	1,148.3	1,424.1	660.1	476.4	381.2	549.3	923.3
Banks	2,585.6	15,737.9	12,355.3	-2,925.4	-7,896.0	-17,854.5	-2,053.5	-414.3	-1,104.0	-214.2	-624.4
Other sectors	1,195.9	3,114.2	4,213.6	6,173.1	4,804.4	1,603.0	2,461.4	5,843.4	6,264.2	2,659.0	1,834.1
Short term debt instruments	2,617.7	4,771.9	12,513.0	6,666.0	5,322.5	7,170.1	5,363.1	2,793.7	6,672.6	-1,207.4	3,682.7
Net acquisition of financial assets	6,837.3	8,028.2	13,131.7	4,712.8	2,498.3	8,531.0	5,967.4	4,030.8	8,131.1	-62.2	1,784.4

Balance of payments of the Republic of Kazakhstan: absolute and comparative indicators

(in USD million)

	2005	2006	2007	2008	2009	2010	2011
Current account balance	-1,036.0	-1,999.9	-8,372.3	6,250.1	-4,120.8	1,385.7	10,198.6
<i>in % of GDP¹</i>	-1.8	-2.5	-8.0	4.7	-3.6	0.9	5.3
<i>in % of CAR¹</i>	-3.2	-4.5	-14.8	7.7	-7.9	2.0	10.8
Trade balance	10,361.5	14,691.7	15,226.2	33,612.0	15,003.9	28,500.2	44,844.1
<i>in % of GDP¹</i>	18.1	18.1	14.5	25.2	13.0	19.3	23.3
Export of goods on a balance of payments basis	28,299.2	38,761.4	48,348.1	71,964.2	43,923.4	61,391.7	85,193.9
<i>in % of GDP¹</i>	49.5	47.9	46.1	53.9	38.1	41.5	44.2
Import of goods on a balance of payments basis	17,937.7	24,069.7	33,121.9	38,352.2	28,919.5	32,891.5	40,349.8
<i>in % of GDP¹</i>	31.4	29.7	31.6	28.7	25.1	22.2	20.9
Export of goods and services	30,386.5	41,438.3	51,772.9	76,256.6	48,027.1	65,510.6	89,531.6
<i>in % of GDP¹</i>	53.2	51.2	49.4	57.1	41.7	44.2	46.5
Import of goods and services	25,459.0	32,880.8	44,990.0	49,571.1	39,001.2	44,260.0	51,322.8
<i>in % of GDP¹</i>	44.6	40.6	42.9	37.1	33.8	29.9	26.6
Foreign trade turnover	46,236.9	62,831.1	81,470.0	#####	72,842.9	94,283.2	#####
Foreign trade turnover (official statistics)	45,201.5	61,927.2	80,511.7	#####	71,604.4	91,397.5	#####
The openness of the economy (foreign trade turnover on the official statistics in % of GDP)	79.1	76.5	76.8	81.7	62.1	61.7	62.9
Primary income (net)	-5,555.5	-9,350.0	-12,945.7	-19,375.3	-12,417.5	-19,375.6	-27,745.1
<i>in % of GDP¹</i>	-9.7	-11.5	-12.3	-14.5	-10.8	-13.1	-14.4
Secondary income (net)	-408.0	-1,207.4	-2,209.6	-1,060.1	-729.2	-489.2	-265.1
<i>in % of GDP¹</i>	-0.7	-1.5	-2.1	-0.8	-0.6	-0.3	-0.1
CAR (current account receivables)	32,189.9	44,113.0	56,438.8	81,025.0	52,151.2	69,671.2	94,509.5
CAP (current account payable)	33,225.9	46,112.9	64,811.1	74,774.9	56,271.9	68,285.5	84,310.9

Capital account balance	4.5	30.8	35.8	19.3	31.4	7,898.0	31.8
Financial account (excluding reserve assets)	2,293.8	-11,803.4	-1,993.6	1,680.5	-3,919.2	10,631.8	9,531.1
<i>in % of GDP¹</i>	<i>4.0</i>	<i>-14.6</i>	<i>-1.9</i>	<i>1.3</i>	<i>-3.4</i>	<i>7.2</i>	<i>4.9</i>
Direct investment (net)	-2,119.1	-6,689.4	-8,030.5	-13,114.7	-10,083.3	-3,665.2	-8,582.6
<i>in % of GDP¹</i>	<i>-3.7</i>	<i>-8.3</i>	<i>-7.7</i>	<i>-9.8</i>	<i>-8.7</i>	<i>-2.5</i>	<i>-4.5</i>
Gross inflow of foreign direct investments in Kazakhstan	7,915.8	12,066.1	19,417.7	21,301.3	21,436.6	22,245.6	26,467.3
<i>in % of GDP¹</i>	<i>13.9</i>	<i>14.9</i>	<i>18.5</i>	<i>16.0</i>	<i>18.6</i>	<i>15.0</i>	<i>13.7</i>
Portfolio investment (net)	3,952.7	4,501.4	4,583.1	9,377.5	-3,093.1	-8,470.3	12,868.1
<i>in % of GDP¹</i>	<i>6.9</i>	<i>5.6</i>	<i>4.4</i>	<i>7.0</i>	<i>-2.7</i>	<i>-5.7</i>	<i>6.7</i>
Overall balance	1,943.8	-11,074.6	3,028.7	-2,165.2	-2,468.5	-4,706.4	-300.4
<i>in % of GDP¹</i>	<i>3.4</i>	<i>-13.7</i>	<i>2.9</i>	<i>-1.6</i>	<i>-2.1</i>	<i>-3.2</i>	<i>-0.2</i>
Reserve assets, end of period	7,069.7	19,127.0	17,629.3	19,848.6	23,074.6	28,245.6	29,299.5
<i>Reserve assets in months of import of goods and services</i>	<i>3.3</i>	<i>7.0</i>	<i>4.7</i>	<i>4.8</i>	<i>7.1</i>	<i>7.7</i>	<i>6.9</i>
<i>in % of GDP²</i>	<i>12.4</i>	<i>23.6</i>	<i>16.8</i>	<i>14.9</i>	<i>20.0</i>	<i>19.1</i>	<i>15.2</i>
<i>Reserve assets in months of CAP</i>	<i>2.6</i>	<i>5.0</i>	<i>3.3</i>	<i>3.2</i>	<i>4.9</i>	<i>5.0</i>	<i>4.2</i>
Foreign assets of the National Fund, end of period	8,073.5	14,092.8	20,986.8	27,409.4	24,352.3	31,025.1	43,694.1
<i>National Fund in months of import of goods and services</i>	<i>3.8</i>	<i>5.1</i>	<i>5.6</i>	<i>6.6</i>	<i>7.5</i>	<i>8.4</i>	<i>10.2</i>
<i>in % of GDP²</i>	<i>14.1</i>	<i>17.4</i>	<i>20.0</i>	<i>20.5</i>	<i>21.1</i>	<i>21.0</i>	<i>22.7</i>
Reserve assets + Foreign assets of the National Fund, end of period	15,143.2	33,219.8	38,616.0	47,258.0	47,426.9	59,270.7	72,993.7

<i>Reserve assets and National Fund in months of import of goods and services</i>	7.1	12.1	10.3	11.4	14.6	16.1	17.1
<i>in % of GDP²</i>	26.5	41.0	36.8	35.4	41.1	40.0	37.9

Reference:

GDP in bln. tenge ³	7,590.6	10,213.7	12,849.8	16,052.9	17,007.6	21,815.5	28,243.1
GDP in USD million ⁴	57,123.7	81,003.5	#####	#####	#####	#####	#####

¹ GDP in US dollars or CAR for the relevant period is used for calculating the comparative parameter

² For calculation the relative parameters at the end of the period (except for the value at year-end period) is used GDP in US dollars for all four quarters preceding the reporting date, which is defined as the sum of quarterly GDP values in US dollars calculated on the corresponding average quarterly exchange rate. For calculation the parameters of the end of the year is used GDP in US dollars for the calendar year (according to the data of the Committee on Statistics of Ministry of National Economy of the Republic of Kazakhstan) calculated at the average exchange rate for the year.

³ Data of the Committee on Statistics of Ministry of National Economy of the Republic of Kazakhstan. Data for 2011-2015 years was updated by the Committee on Statistics in 29 July 2016, for 2016 was updated 31 July 2017, data for 9 months 2017 was published 29 December 2017.

⁴ Information about GDP in USD for the calendar year is provided by the Committee on Statistics of Ministry of National Economy of the Republic of Kazakhstan. GDP in USD dollars for year are defined as the sum of data in USD on quarterly basis calculated at the average exchange rate for the quarter.

2012	2013	2014	2015
1,057.7	1,273.5	6,139.8	-5,134.4
<i>0.5</i>	<i>0.5</i>	<i>2.8</i>	<i>-2.8</i>
<i>1.1</i>	<i>1.3</i>	<i>6.7</i>	<i>-9.0</i>
38,145.2	34,792.3	36,245.5	12,671.4
<i>18.3</i>	<i>14.7</i>	<i>16.4</i>	<i>6.9</i>
86,931.1	85,595.4	80,309.5	46,515.9
<i>41.8</i>	<i>36.2</i>	<i>36.3</i>	<i>25.2</i>
48,785.8	50,803.2	44,064.0	33,844.4
<i>23.5</i>	<i>21.5</i>	<i>19.9</i>	<i>18.4</i>
91,759.3	90,980.2	86,927.6	52,991.9
<i>44.1</i>	<i>38.4</i>	<i>39.3</i>	<i>28.7</i>
61,543.9	63,261.6	56,980.2	45,426.7
<i>29.6</i>	<i>26.7</i>	<i>25.7</i>	<i>24.6</i>
#####	#####	#####	80,360.3
#####	#####	#####	76,523.5
<i>63.8</i>	<i>56.4</i>	<i>54.5</i>	<i>41.5</i>
-28,117.1	-25,147.7	-22,476.7	-11,149.4
<i>-13.5</i>	<i>-10.6</i>	<i>-10.2</i>	<i>-6.0</i>
-1,040.6	-1,297.3	-1,330.8	-1,550.2
<i>-0.5</i>	<i>-0.5</i>	<i>-0.6</i>	<i>-0.8</i>
96,477.3	96,350.8	91,733.3	57,000.8
95,419.7	95,077.3	85,593.4	62,135.3

15.4	-6.4	29.3	131.7
4,319.3	-303.2	-7,094.1	-9,324.4
2.1	-0.1	-3.2	-5.1
-11,855.9	-8,034.4	-4,591.1	-2,857.7
-5.7	-3.4	-2.1	-1.5
28,884.9	24,098.3	23,725.5	14,847.2
13.9	10.2	10.7	8.1
17,387.9	6,033.6	1,038.8	-5,887.9
8.4	2.5	0.5	-3.2
4,306.5	2,379.7	-4,254.9	767.7
2.1	1.0	-1.9	0.4
28,268.8	24,715.2	29,208.5	27,871.3
5.5	4.7	6.2	7.4
13.6	10.4	13.2	15.1
3.6	3.1	4.1	5.4
57,915.8	70,789.7	73,186.4	63,392.2
11.3	13.4	15.4	16.7
27.8	29.9	33.1	34.4
86,184.6	95,504.8	#####	91,263.4

<i>16.8</i>	<i>18.1</i>	<i>21.6</i>	<i>24.1</i>
<i>41.4</i>	<i>40.4</i>	<i>46.2</i>	<i>49.5</i>

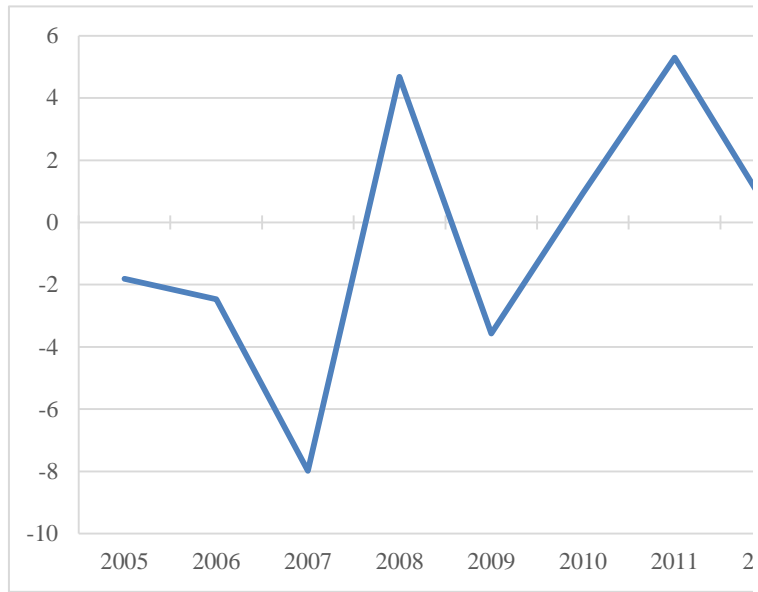
31,015.2	35,999.0	39,675.8	40,884.1
#####	#####	#####	#####

rs for the period

CA/HDP

	2005	2006	2007	2008	2009	2010	2011	2012
in % of GDP	<i>-1.8</i>	<i>-2.5</i>	<i>-8.0</i>	<i>4.7</i>	<i>-3.6</i>	<i>0.9</i>	<i>5.3</i>	<i>0.5</i>

2013	2014	2015
0.5	2.8	-2.8





Balance of Payments of the Republic of Kazakhstan: analytic presentation

(in USD million)

	2005	2006	2007	2008
Current Account	-1,036.0	-1,999.9	-8,372.3	6,250.1
Trade balance	10,361.5	14,691.7	15,226.2	33,612.0
Exports	28,299.2	38,761.4	48,348.1	71,964.2
Imports	-17,937.7	-24,069.7	-33,121.9	-38,352.2
Services	-5,434.0	-6,134.2	-8,443.2	-6,926.5
Exports	2,087.3	2,676.9	3,424.8	4,292.4
Imports	-7,521.3	-8,811.1	-11,868.1	-11,218.9
Primary income	-5,555.5	-9,350.0	-12,945.7	-19,375.3
Compensation of employees, net	-728.4	-948.4	-1,203.2	-1,452.0
Investment income, net	-4,969.6	-8,544.1	-11,884.9	-18,063.1
Income receivable	844.7	1,623.3	3,661.5	3,595.0
Income on direct investment	9.3	10.9	268.8	170.9
Income on portfolio investment	234.6	493.8	857.0	914.1
Income on other investment	600.8	1,118.6	2,535.7	2,510.0
<i>of which Interest on international reserves and assets of the National Fund</i>	410.0	822.3	1,461.1	1,189.1
Income payable	5,814.3	10,167.5	15,546.4	21,658.1
Income on direct investment	4,804.8	7,898.2	11,514.3	17,315.7
Income on portfolio investment	154.3	341.9	394.5	321.4
Income on other investment	855.2	1,927.4	3,637.6	4,021.0
Other primary income, net	142.5	142.5	142.5	139.8
Secondary income	-408.0	-1,207.4	-2,209.6	-1,060.1
Capital account balance	4.5	30.8	35.8	19.3
Financial account (excluding reserve assets)	2,293.8	-11,803.4	-1,993.6	1,680.5
Direct investment	-2,119.1	-6,689.4	-8,030.5	-13,114.7
Net acquisition of financial assets	427.0	921.8	3,942.3	3,704.1
Net incurrence of liabilities	-2,546.1	-7,611.2	-11,972.8	-16,818.9
Portfolio investment	3,952.7	4,501.4	4,583.1	9,377.5
Net acquisition of financial assets	5,157.1	9,176.7	4,101.3	7,277.6
Central bank and general government	2,970.9	5,847.6	6,144.8	6,408.8
Banks	1,762.5	1,883.0	-1,875.5	-335.6
Other sectors	423.7	1,446.1	-168.0	1,204.4
Net incurrence of liabilities	-1,204.4	-4,675.4	481.8	2,099.9
Central bank and general government	39.6	773.8	-2,111.4	-136.3
Banks	1,194.2	2,948.3	610.2	-1,540.7
Other sectors	-29.4	953.2	1,019.4	-422.9
Financial derivatives, net	112.6	67.8	369.1	-163.7
Other investment	347.6	-9,683.2	1,084.7	5,581.5
Other equity, net	3.7	217.3	193.7	96.8
Medium- and long term debt instruments	-2,273.9	-14,672.4	-11,622.0	-1,181.3
Net acquisition of financial assets	680.4	4,179.0	4,889.1	2,100.0
Central bank and general government	0.0	-1.2	-1.2	-1.2
Banks	589.5	4,019.7	3,883.8	1,246.7
Other sectors	90.8	160.5	1,006.6	854.5

Net incurrence of liabilities	2,954.3	18,851.5	16,511.1	3,281.2
Central bank and general government	-827.3	-0.5	-57.8	33.5
Banks	2,585.6	15,737.9	12,355.3	-2,925.4
Other sectors	1,195.9	3,114.2	4,213.6	6,173.1
Short term debt instruments	2,617.7	4,771.9	12,513.0	6,666.0
Net acquisition of financial assets	6,837.3	8,028.2	13,131.7	4,712.8
Net incurrence of liabilities	4,219.6	3,256.3	618.7	-1,953.1
Net errors and omissions	1,381.5	1,240.3	3,314.2	-2,423.7
Overall balance	1,943.8	-11,074.6	3,028.7	-2,165.2
Financing	-1,943.8	11,074.6	-3,028.7	2,165.2
Reserve assets NBK	-1,943.8	11,074.6	-3,028.7	2,165.2
IMF credits	0.0	0.0	0.0	0.0
Exceptional financing	0.0	0.0	0.0	0.0

2009	2010	2011	2012	2013	2014	2015
-4,120.8	1,385.7	10,198.6	1,057.7	1,273.5	6,139.8	-5,134.4
15,003.9	28,500.2	44,844.1	38,145.2	34,792.3	36,245.5	12,671.4
43,923.4	61,391.7	85,193.9	86,931.1	85,595.4	80,309.5	46,515.9
-28,919.5	-32,891.5	-40,349.8	-48,785.8	-50,803.2	-44,064.0	-33,844.4
-5,978.0	-7,249.6	-6,635.2	-7,929.9	-7,073.7	-6,298.1	-5,106.3
4,103.7	4,119.0	4,337.7	4,828.2	5,384.7	6,618.1	6,476.0
-10,081.7	-11,368.5	-10,972.9	-12,758.1	-12,458.4	-12,916.2	-11,582.2
-12,417.5	-19,375.6	-27,745.1	-28,117.1	-25,147.7	-22,476.7	-11,149.4
-1,304.8	-1,406.4	-1,730.2	-1,927.8	-1,803.7	-1,785.3	-1,612.3
-11,252.4	-18,109.0	-26,154.6	-26,329.0	-23,483.8	-20,831.2	-9,676.9
3,033.3	2,556.9	2,088.1	1,945.9	2,176.7	2,071.9	2,113.2
68.0	303.5	155.9	194.9	347.6	309.4	583.6
863.2	716.6	901.3	959.9	1,094.4	1,183.0	1,035.4
2,102.2	1,536.8	1,031.0	791.1	734.7	579.5	494.1
820.9	827.8	1,006.4	1,028.0	1,162.1	1,176.8	1,027.5
14,285.7	20,665.9	28,242.8	28,274.9	25,660.5	22,903.1	11,790.0
10,960.9	17,997.1	25,213.2	24,753.0	22,510.9	19,763.9	9,197.4
251.4	922.8	1,751.2	2,070.3	1,590.9	1,667.1	1,639.3
3,073.4	1,746.1	1,278.4	1,451.6	1,558.7	1,472.1	953.3
139.8	139.8	139.8	139.8	139.8	139.8	139.8
-729.2	-489.2	-265.1	-1,040.6	-1,297.3	-1,330.8	-1,550.2
31.4	7,898.0	31.8	15.4	-6.4	29.3	131.7
-3,919.2	10,631.8	9,531.1	4,319.3	-303.2	-7,094.1	-9,324.4
-10,083.3	-3,665.2	-8,582.6	-11,855.9	-8,034.4	-4,591.1	-2,857.7
4,192.6	3,790.9	5,177.6	1,792.3	1,976.9	2,633.5	3,315.1
-14,275.9	-7,456.1	-13,760.3	-13,648.1	-10,011.3	-7,224.6	-6,172.8
-3,093.1	-8,470.3	12,868.1	17,387.9	6,033.6	1,038.8	-5,887.9
-1,868.8	7,202.1	13,590.3	15,068.2	8,503.0	6,473.8	-9,524.5
-3,315.3	7,404.8	12,204.6	14,549.6	7,779.5	6,800.0	-8,358.4
163.1	61.7	179.6	238.6	556.6	-218.5	-819.8
1,283.4	-264.4	1,206.1	280.0	167.0	-107.7	-346.3
-1,224.3	-15,672.4	-722.1	2,319.7	-2,469.4	-5,434.9	3,636.6
334.8	-107.8	-241.6	-46.5	0.9	1,969.6	3,355.2
526.0	8,025.9	-170.1	-1,980.9	-631.8	-809.9	-872.3
363.5	7,754.3	1,133.7	-292.3	3,100.3	4,275.2	-6,119.5
-66.2	3.9	-126.7	108.9	103.7	-37.1	-106.8
9,323.3	22,763.5	5,372.3	-1,321.7	1,593.8	-3,504.8	-472.0
104.3	4.5	8.2	14.7	195.1	208.7	86.3
3,896.5	15,588.9	0.9	-4,130.1	-5,273.9	-2,506.1	-4,241.0
1,953.2	761.4	1,068.9	1,775.4	267.5	488.0	-2,108.1
-1.2	-1.2	0.6	-2.7	5.5	235.4	-38.8
1,243.0	1,111.1	-278.5	-4.4	-227.1	-773.5	-179.7
711.4	-348.5	1,346.8	1,782.6	489.1	1,026.1	-1,889.6

-1,943.3	-14,827.4	1,068.0	5,905.5	5,541.4	2,994.0	2,132.9
1,148.3	1,424.1	660.1	476.4	381.2	549.3	923.3
-7,896.0	-17,854.5	-2,053.5	-414.3	-1,104.0	-214.2	-624.4
4,804.4	1,603.0	2,461.4	5,843.4	6,264.2	2,659.0	1,834.1
5,322.5	7,170.1	5,363.1	2,793.7	6,672.6	-1,207.4	3,682.7
2,498.3	8,531.0	5,967.4	4,030.8	8,131.1	-62.2	1,784.4
-2,824.1	1,360.8	604.3	1,237.1	1,458.5	1,145.2	-1,898.3

2,638.7	6,054.4	-398.9	-1,060.3	-3,950.1	-9,008.4	-5,089.3
----------------	----------------	---------------	-----------------	-----------------	-----------------	-----------------

-2,468.5	-4,706.4	-300.4	4,306.5	2,379.7	-4,254.9	767.7
-----------------	-----------------	---------------	----------------	----------------	-----------------	--------------

2,468.5	4,706.4	300.4	-4,306.5	-2,379.7	4,254.9	-767.7
----------------	----------------	--------------	-----------------	-----------------	----------------	---------------

2,468.5	4,706.4	300.4	-4,306.5	-2,379.7	4,254.9	-767.7
---------	---------	-------	----------	----------	---------	--------

0.0	0.0	0.0	0.0	0.0	0.0	0.0
-----	-----	-----	-----	-----	-----	-----

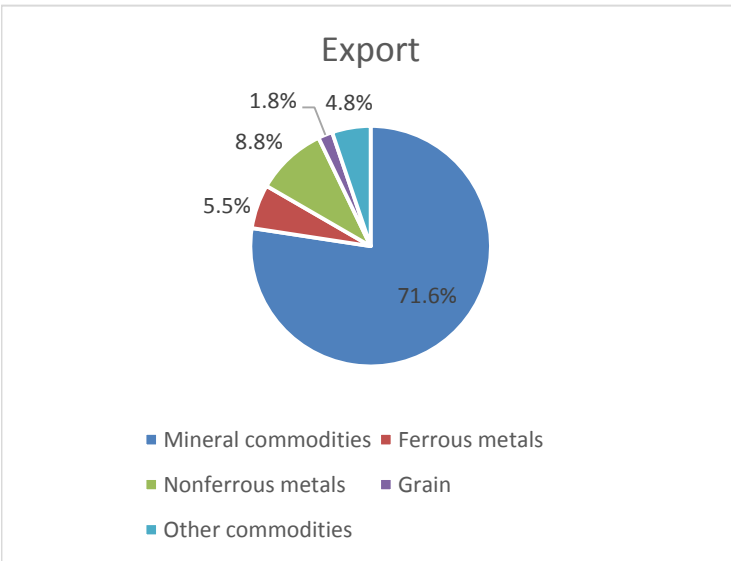
0.0	0.0	0.0	0.0	0.0	0.0	0.0
-----	-----	-----	-----	-----	-----	-----

Trade balance
Commodity structure

EXPORT

2015

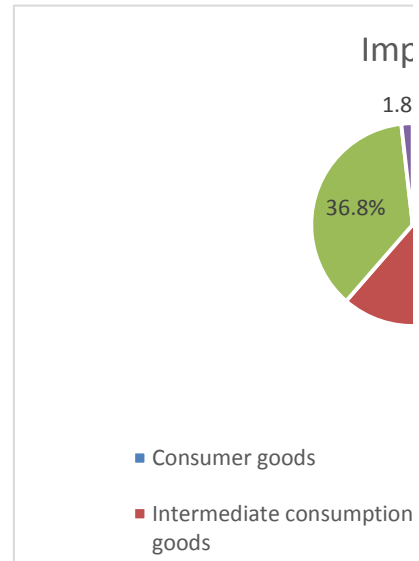
Mineral commodities	71.6%
Ferrous metals	5.5%
Nonferrous metals	8.8%
Grain	1.8%
Other commodities	4.8%



IMPORT

2015

	100%
Consumer goods	27.3%
Intermediate consumption	34.1%
Investment goods	36.8%
Other goods	1.8%
Food products	10.4%
Nonfood products	17.0%

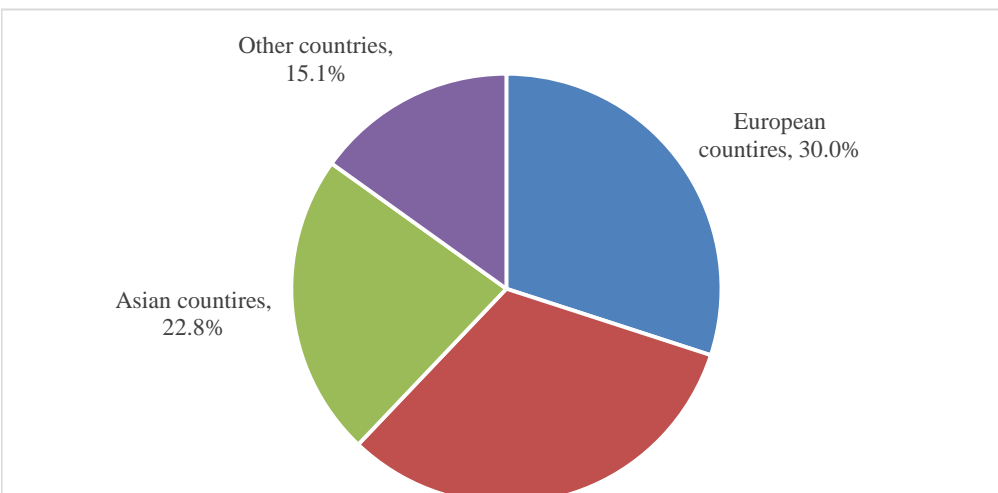


Services balance

Geographical structure

2015

European countries	30.0%
CIS countries	32.1%
Asian countries	22.8%
Other countries	15.1%

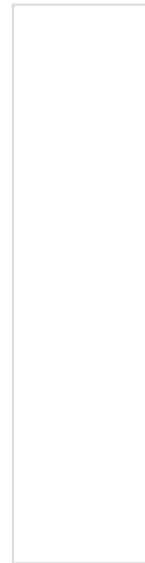


CIS countries,
32.1%

Geographical structure

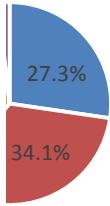
2015

European countries	45.1%
CIS countries	26.9%
Asian countries	24.0%
Other countries	4%

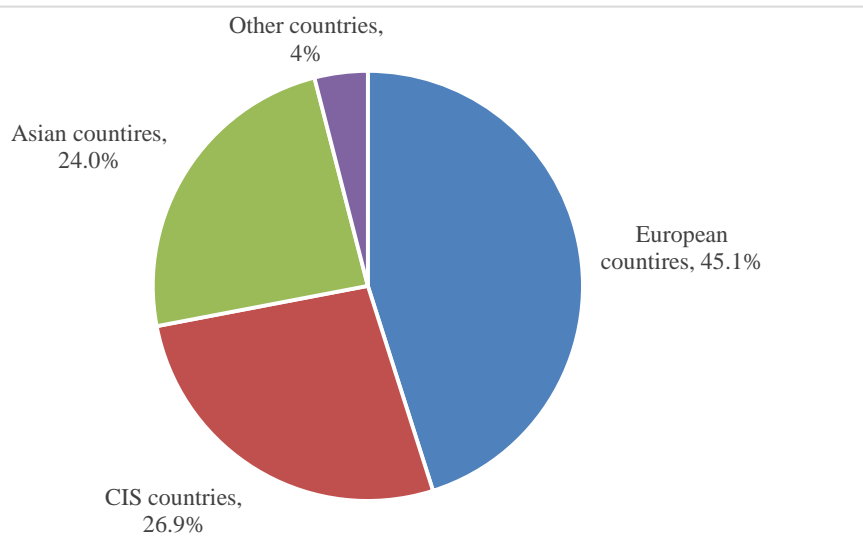


port

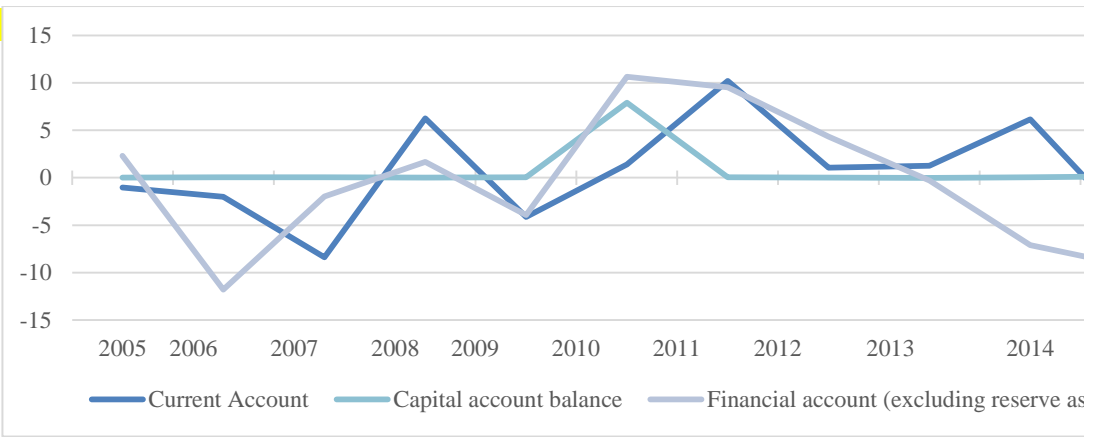
%



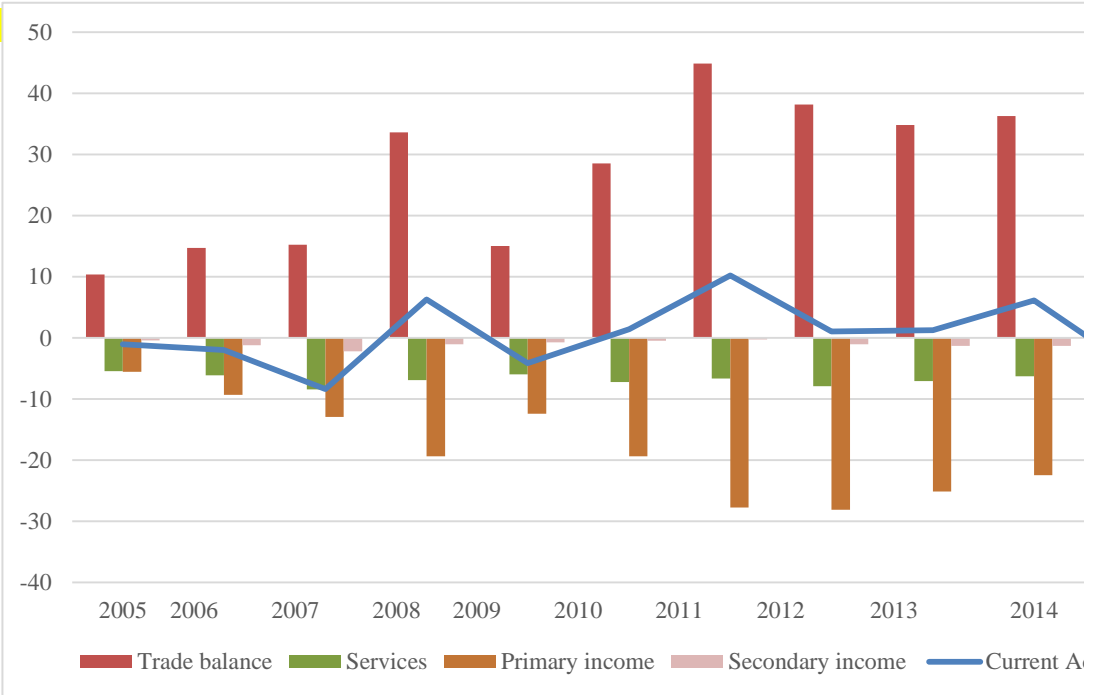
of manufactured



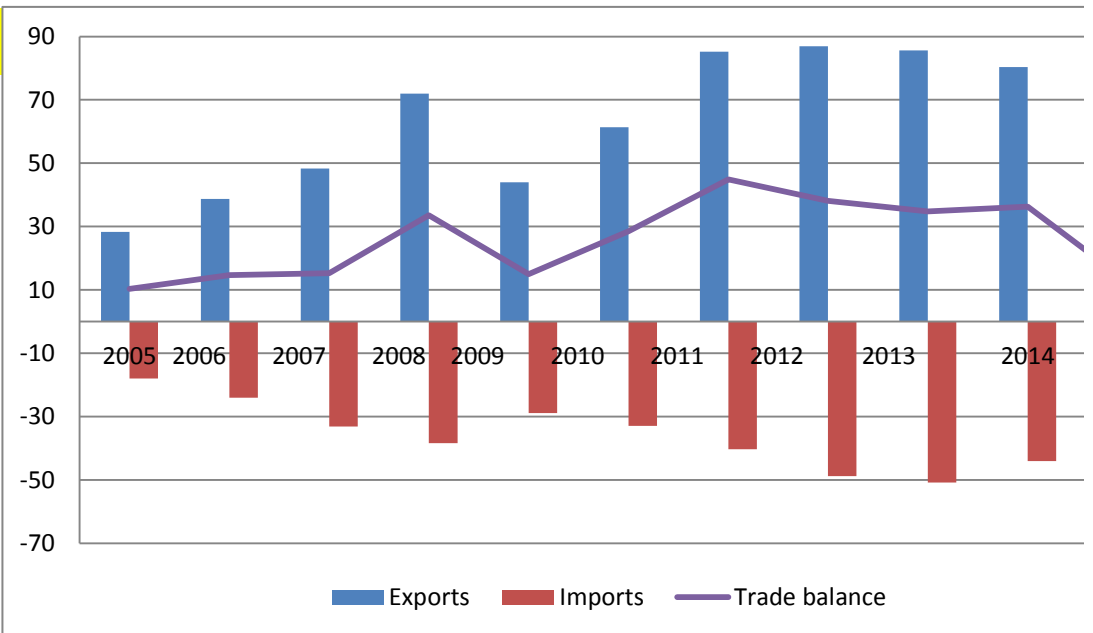
BOP



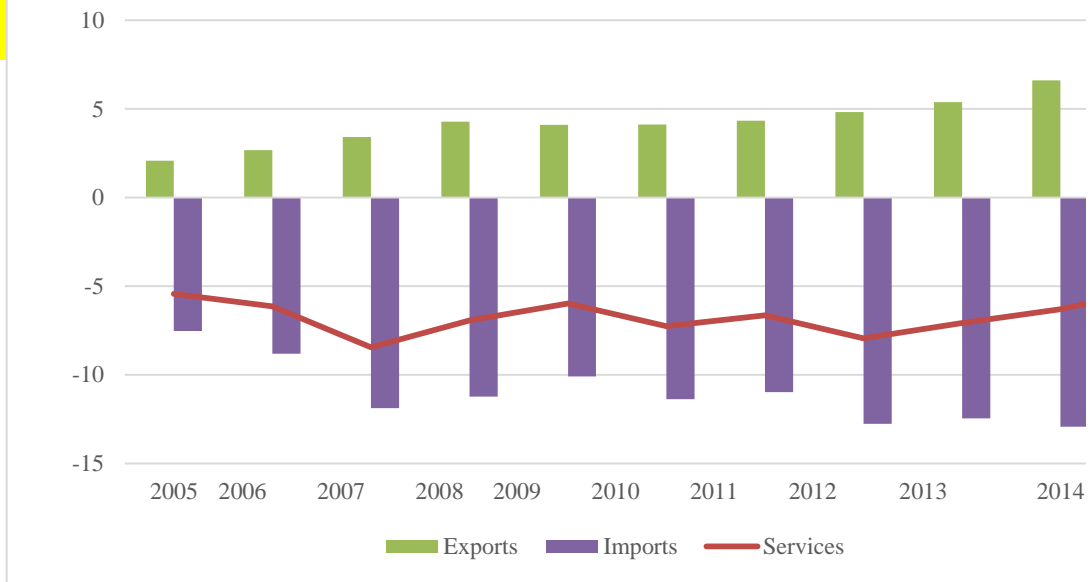
CA



Trade balance



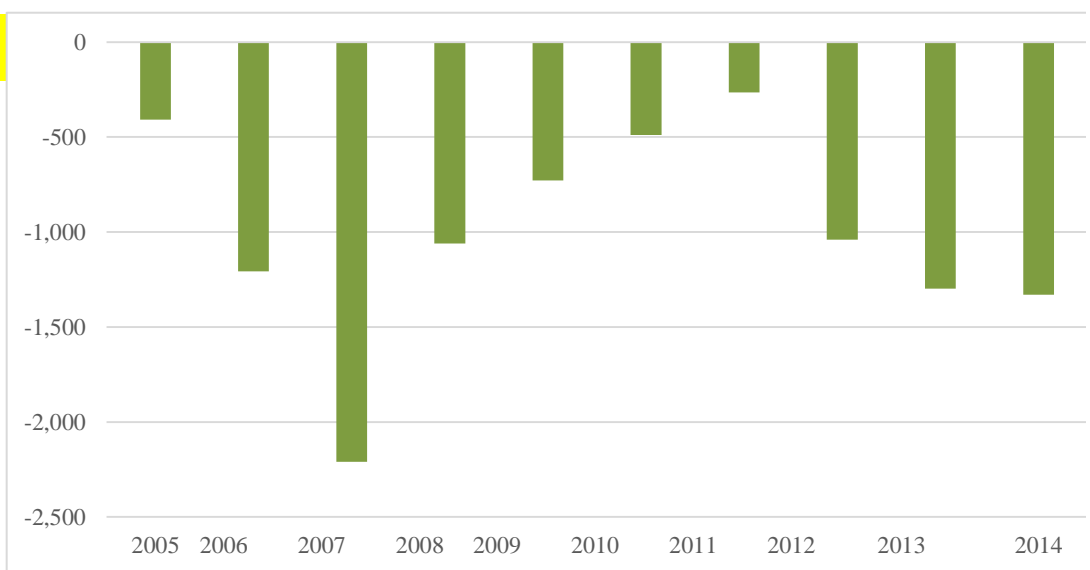
Services balance

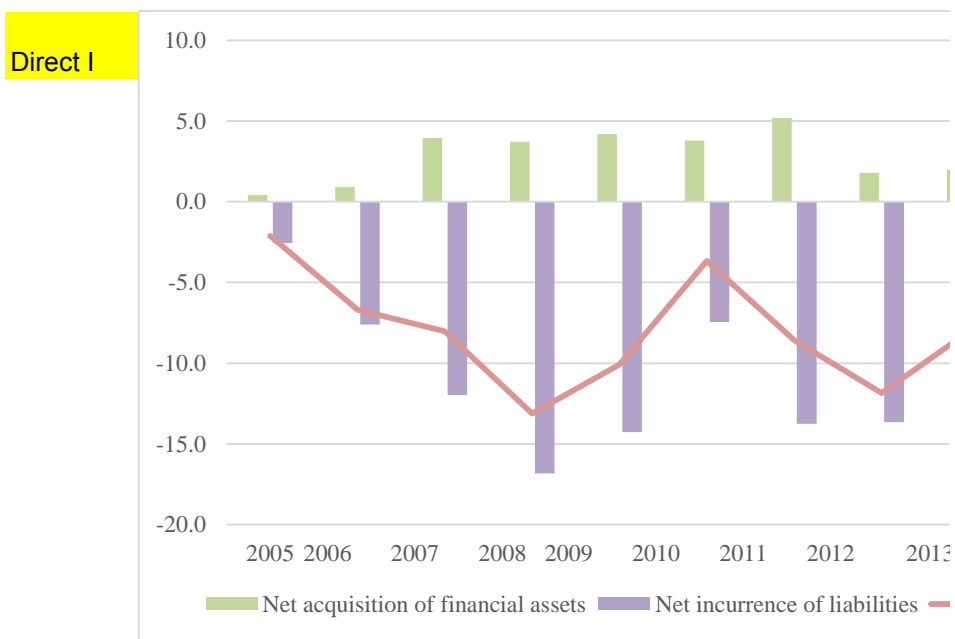
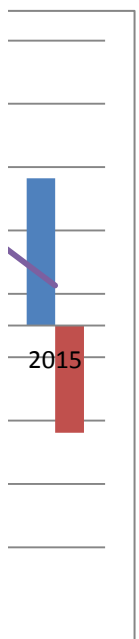
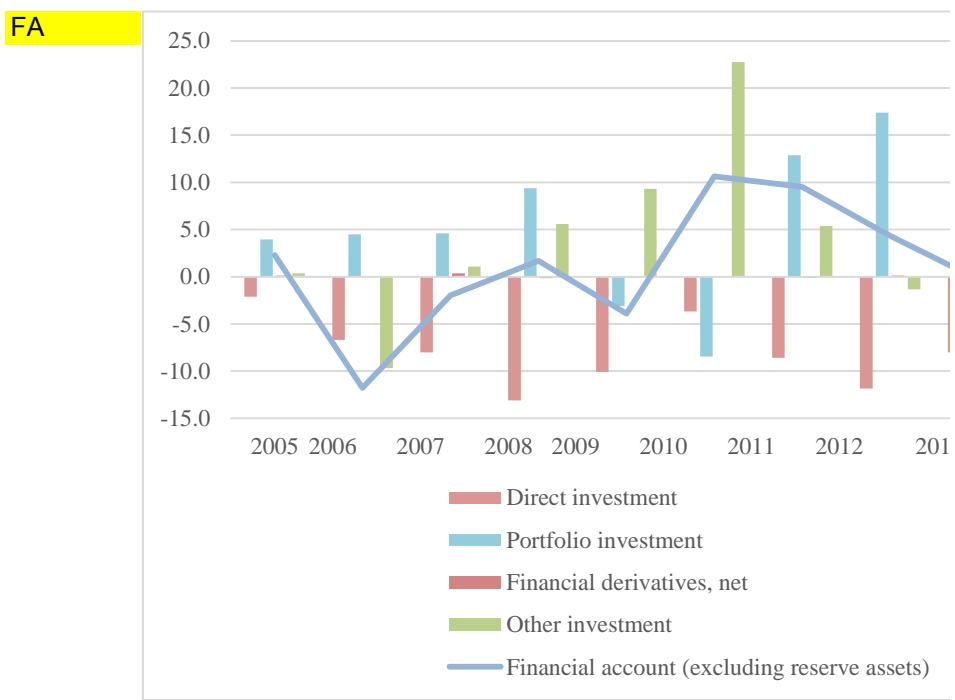
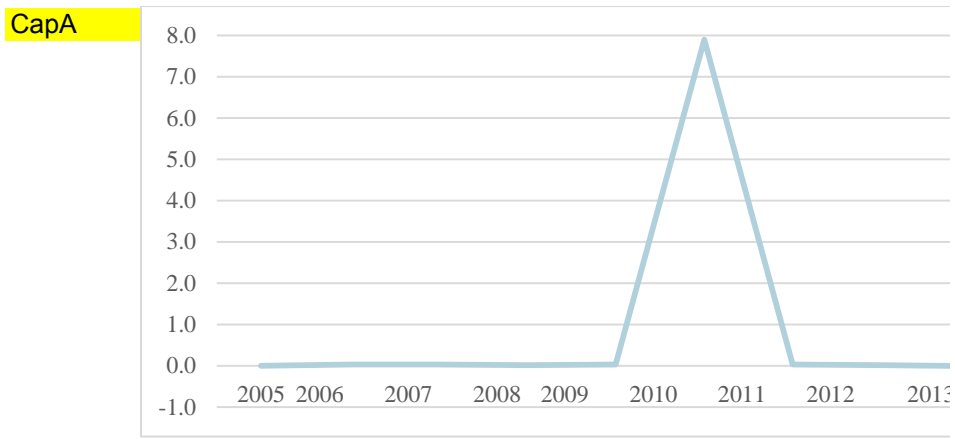


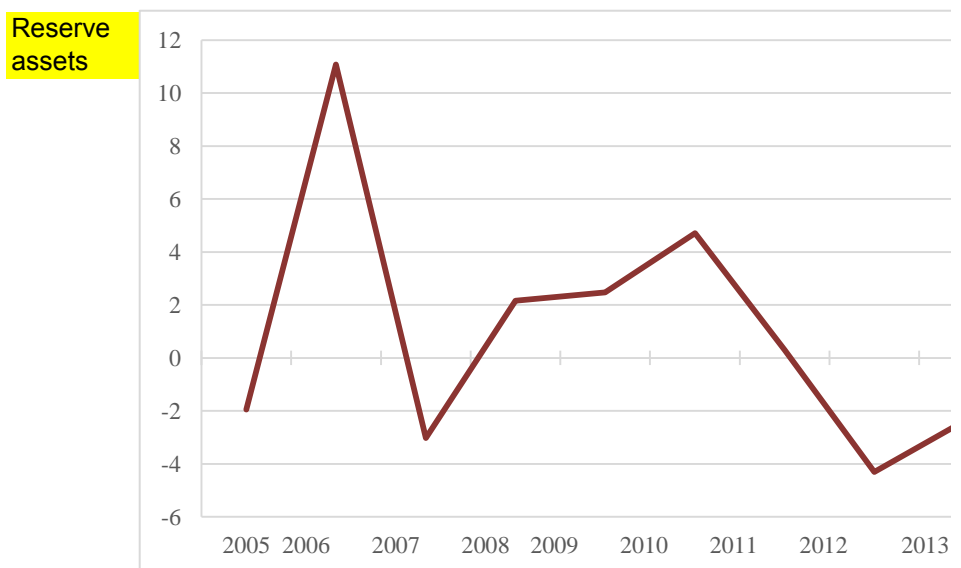
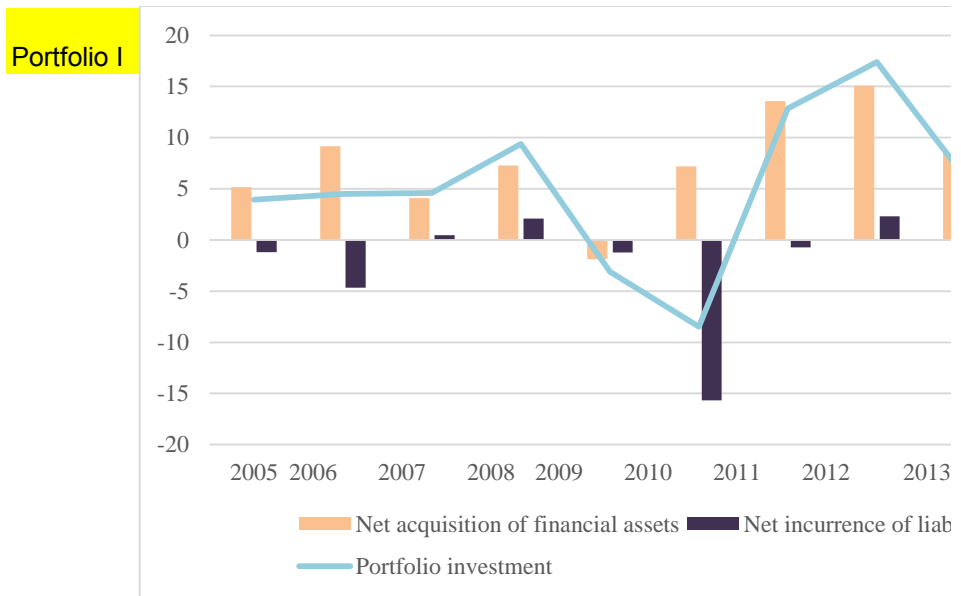
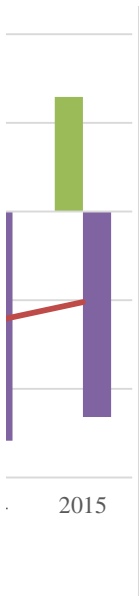
Primary income

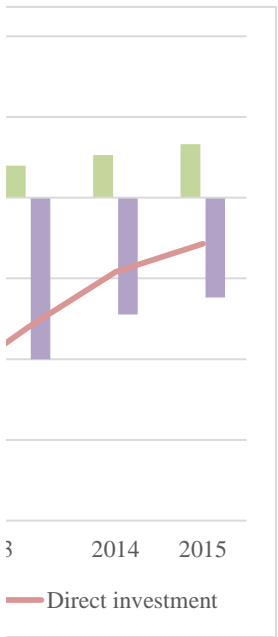
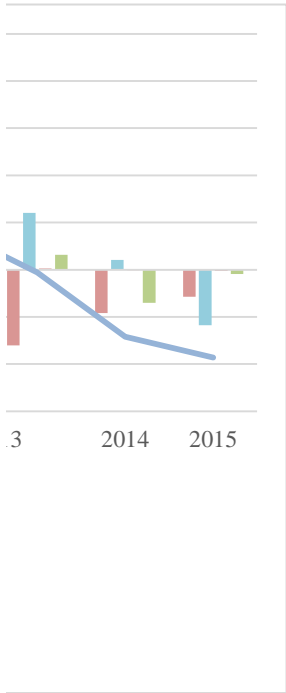


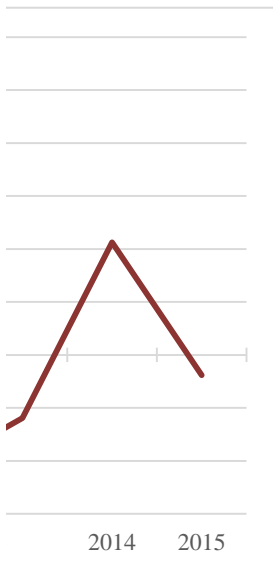
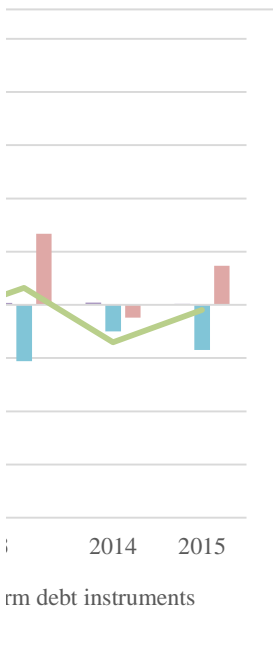
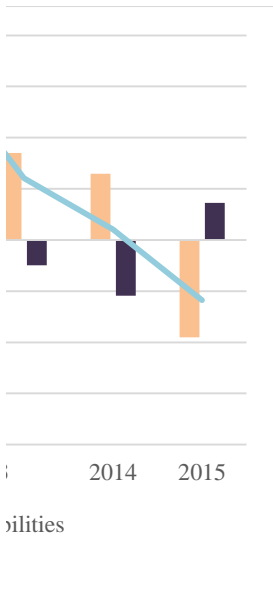
Secondary income



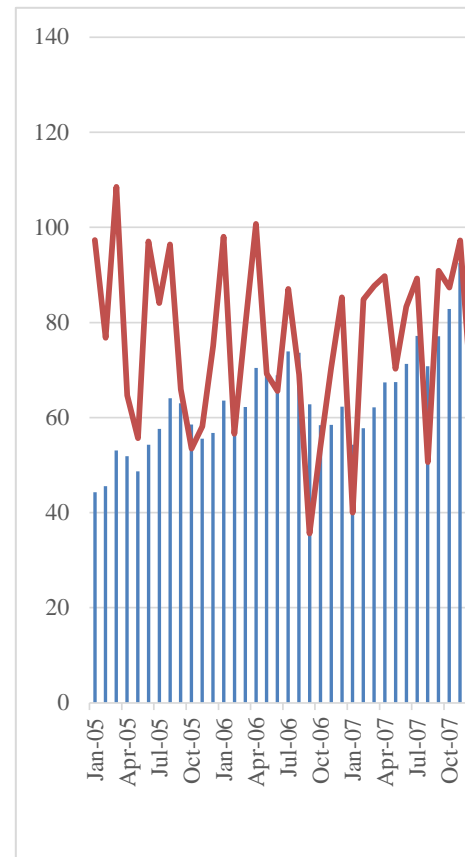








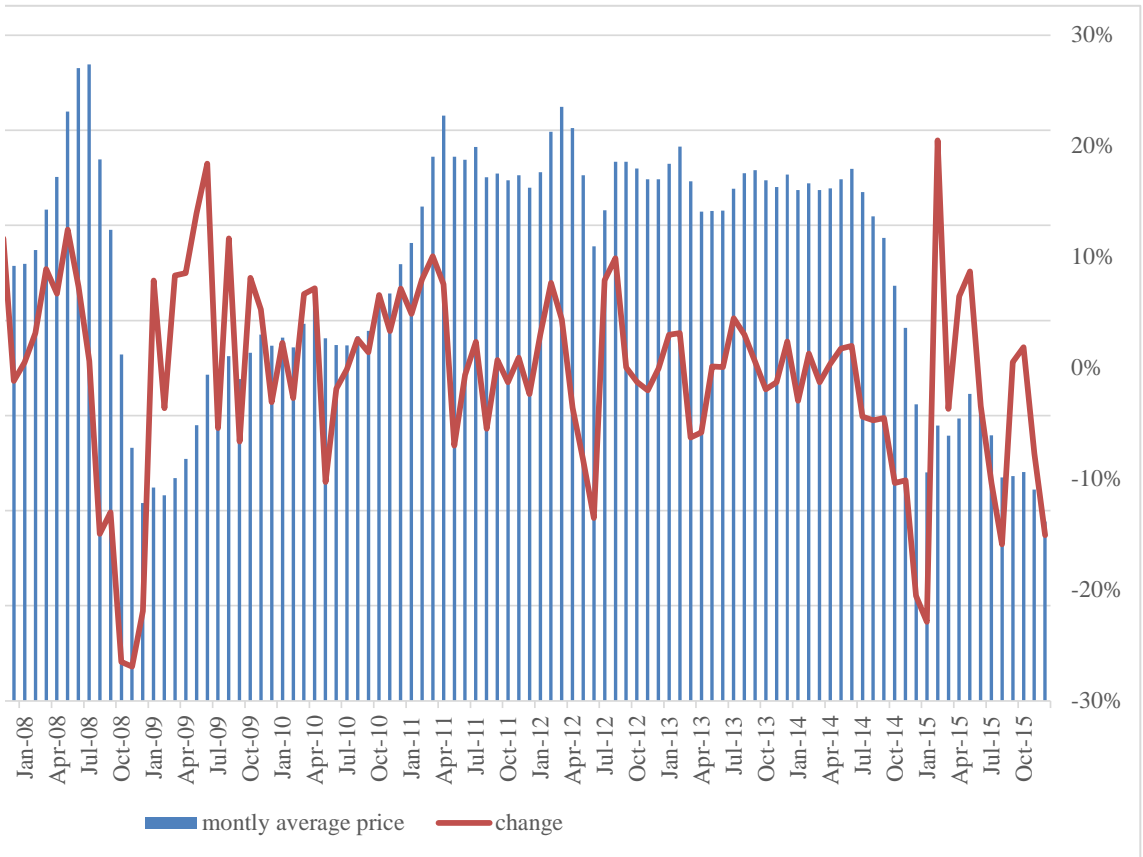
Month	monthly average price	change
Jan-05	44.28	11.71%
Feb-05	45.56	2.89%
Mar-05	53.08	16.51%
Apr-05	51.86	-2.30%
May-05	48.67	-6.15%
Jun-05	54.31	11.59%
Jul-05	57.58	6.02%
Aug-05	64.09	11.31%
Sep-05	62.98	-1.73%
Oct-05	58.52	-7.08%
Nov-05	55.54	-5.09%
Dec-05	56.75	2.18%
Jan-06	63.57	12.02%
Feb-06	59.92	-5.74%
Mar-06	62.25	3.89%
Apr-06	70.44	13.16%
May-06	70.19	-0.35%
Jun-06	68.86	-1.89%
Jul-06	73.9	7.32%
Aug-06	73.61	-0.39%
Sep-06	62.77	-14.73%
Oct-06	58.38	-6.99%
Nov-06	58.48	0.17%
Dec-06	62.31	6.55%
Jan-07	54.3	-12.86%
Feb-07	57.76	6.37%
Mar-07	62.14	7.58%
Apr-07	67.4	8.46%
May-07	67.48	0.12%
Jun-07	71.32	5.69%
Jul-07	77.2	8.24%
Aug-07	70.8	-8.29%
Sep-07	77.13	8.94%
Oct-07	82.86	7.43%
Nov-07	92.53	11.67%
Dec-07	91.45	-1.17%
Jan-08	91.92	0.51%
Feb-08	94.82	3.15%
Mar-08	103.28	8.92%
Apr-08	110.19	6.69%
May-08	123.94	12.48%
Jun-08	133.05	7.35%
Jul-08	133.87	0.62%
Aug-08	113.85	-14.95%
Sep-08	99.06	-12.99%
Oct-08	72.84	-26.47%
Nov-08	53.24	-26.91%
Dec-08	41.58	-21.90%
Jan-09	44.86	7.89%
Feb-09	43.24	-3.61%
Mar-09	46.84	8.33%



Apr-09	50.85	8.56%
May-09	57.94	13.94%
Jun-09	68.62	18.43%
Jul-09	64.91	-5.41%
Aug-09	72.5	11.69%
Sep-09	67.69	-6.63%
Oct-09	73.19	8.13%
Nov-09	77.04	5.26%
Dec-09	74.67	-3.08%
Jan-10	76.37	2.28%
Feb-10	74.31	-2.70%
Mar-10	79.27	6.67%
Apr-10	84.98	7.20%
May-10	76.25	-10.27%
Jun-10	74.84	-1.85%
Jul-10	74.74	-0.13%
Aug-10	76.69	2.61%
Sep-10	77.79	1.43%
Oct-10	82.92	6.59%
Nov-10	85.67	3.32%
Dec-10	91.8	7.16%
Jan-11	96.29	4.89%
Feb-11	103.96	7.97%
Mar-11	114.44	10.08%
Apr-11	123.07	7.54%
May-11	114.46	-7.00%
Jun-11	113.76	-0.61%
Jul-11	116.46	2.37%
Aug-11	110.08	-5.48%
Sep-11	110.88	0.73%
Oct-11	109.47	-1.27%
Nov-11	110.5	0.94%
Dec-11	107.91	-2.34%
Jan-12	111.16	3.01%
Feb-12	119.7	7.68%
Mar-12	124.93	4.37%
Apr-12	120.46	-3.58%
May-12	110.52	-8.25%
Jun-12	95.59	-13.51%
Jul-12	103.14	7.90%
Aug-12	113.34	9.89%
Sep-12	113.38	0.04%
Oct-12	111.97	-1.24%
Nov-12	109.71	-2.02%
Dec-12	109.68	-0.03%
Jan-13	112.97	3.00%
Feb-13	116.52	3.14%
Mar-13	109.24	-6.25%
Apr-13	102.88	-5.82%
May-13	103.03	0.15%
Jun-13	103.11	0.08%
Jul-13	107.72	4.47%
Aug-13	110.96	3.01%
Sep-13	111.62	0.59%



Oct-13	109.48	-1.92%
Nov-13	108.08	-1.28%
Dec-13	110.67	2.40%
Jan-14	107.42	-2.94%
Feb-14	108.81	1.29%
Mar-14	107.4	-1.30%
Apr-14	107.79	0.36%
May-14	109.68	1.75%
Jun-14	111.87	2.00%
Jul-14	106.98	-4.37%
Aug-14	101.92	-4.73%
Sep-14	97.34	-4.49%
Oct-14	87.27	-10.35%
Nov-14	78.44	-10.12%
Dec-14	62.33	-20.54%
Jan-15	48.07	-22.88%
Feb-15	57.93	20.51%
Mar-15	55.79	-3.69%
Apr-15	59.39	6.45%
May-15	64.56	8.71%
Jun-15	62.34	-3.44%
Jul-15	55.87	-10.38%
Aug-15	46.99	-15.89%
Sep-15	47.24	0.53%
Oct-15	48.12	1.86%
Nov-15	44.42	-7.69%
Dec-15	37.72	-15.08%



International Investment Position of Kazakhstan: standard presentation (position as of "date")

mln \$

	2005	2006	2007	2008
Net International Investment Position	-20,273.6	-28,958.4	-44,307.5	-38,830.4
Assets	32,722.5	63,326.9	82,428.7	98,662.7
Direct investment ²	1,400.8	2,857.0	6,873.3	9,055.0
Equity and investment fund shares	680.8	2,012.2	4,166.6	8,131.4
Direct investor in direct investment enterprises	671.8	1,968.6	4,125.1	8,085.6
Direct investment enterprises in direct investor (reverse investment)	9.0	43.6	41.5	45.8
Between fellow enterprises	0.0	0.0	0.0	0.0
Debt instruments	720.0	844.8	2,706.6	923.6
Direct investor in direct investment enterprises	231.4	277.6	398.0	418.6
Direct investment enterprises in direct investor (reverse investment)	488.6	567.2	2,308.7	505.0
Between fellow enterprises	0.0	0.0	0.0	0.0
Portfolio investment	10,962.2	20,104.8	24,842.0	31,591.1
Equity and investment fund shares	1,512.7	3,271.1	4,901.2	3,491.7
Central bank	0.0	0.0	0.0	0.0
Deposit-taking corporations, except the central bank	0.0	0.0	0.0	2.6
General government	1,439.5	3,205.0	4,229.4	2,698.9
Other sectors	73.2	66.2	671.8	790.3
Other financial corporations	69.8	37.7	612.0	510.3
Nonfinancial corporations, households, and NPISHs	3.4	28.4	59.8	279.9
Debt securities	9,449.5	16,833.6	19,940.8	28,099.4
Central bank	0.0	0.0	0.0	0.0
Short-term	0.0	0.0	0.0	0.0
Long-term	0.0	0.0	0.0	0.0
Deposit-taking corporations, except the central bank	2,584.0	4,493.1	2,671.4	2,301.6
Short-term	26.5	0.0	0.0	0.0
Long-term	2,557.4	4,493.1	2,671.4	2,301.6
General government	6,364.0	10,503.7	16,032.8	24,106.3
Short-term	2,634.1	2,614.8	3,090.4	9,999.2
Long-term	3,729.9	7,888.8	12,942.4	14,107.1
Other sectors	501.6	1,836.9	1,236.7	1,691.4
Other financial corporations	332.9	647.7	981.7	1,498.8
Short-term	0.0	0.0	0.0	0.0
Long-term	332.9	647.7	981.7	1,498.8
Nonfinancial corporations, households, and NPISHs	168.7	1,189.2	254.9	192.6
Short-term	0.0	0.0	10.0	0.0
Long-term	168.7	1,189.2	244.9	192.6
Financial derivatives (other than reserves) and employee stock options	164.3	258.1	865.4	1,296.9
Central bank	0.0	0.0	0.0	0.0
Deposit-taking corporations, except the central bank	1.9	77.8	696.2	948.9
General government	5.6	10.2	-1.1	31.7
Other sectors	156.9	170.1	170.4	316.3
Other financial corporations	0.0	0.0	0.3	122.4
Nonfinancial corporations, households, NPISHs	156.9	170.1	170.1	193.9
Other investment	13,125.5	20,980.0	32,218.7	36,871.1
Other equity	3.7	221.0	414.8	511.6
Currency and deposits	5,499.3	6,118.8	8,695.4	9,767.5
Central bank	1.6	3.1	20.8	5.2
Short-term	1.6	3.1	20.8	5.2
Long-term	0.0	0.0	0.0	0.0

Deposit-taking corporations, except the central bank	3,355.0	4,321.5	6,751.1	7,050.8
Short-term	3,320.3	4,192.2	6,552.1	6,773.1
Long-term	34.7	129.3	199.0	277.7
<i>Of which: Interbank positions</i>	3,045.5	3,858.5	6,070.4	6,447.3
General government	217.6	338.6	725.7	572.5
Short-term	217.6	338.6	725.7	572.5
Long-term	0.0	0.0	0.0	0.0
Other sectors	1,925.0	1,455.5	1,197.8	2,139.1
Other financial corporations	0.0	0.0	169.4	172.6
Short-term	0.0	0.0	169.4	172.6
Long-term	0.0	0.0	0.0	0.0
Nonfinancial corporations, households, NPISHs	1,925.0	1,455.5	1,028.4	1,966.5
Short-term	1,925.0	1,455.5	1,028.4	1,966.5
Long-term	0.0	0.0	0.0	0.0
Loans	3,054.5	8,395.7	13,896.6	17,398.5
Central bank	0.0	0.0	0.0	0.0
Credit and loans with the IMF (other than reserves)	0.0	0.0	0.0	0.0
Other short-term	0.0	0.0	0.0	0.0
Other long-term	0.0	0.0	0.0	0.0
Deposit-taking corporations, except the central bank	2,668.4	7,842.9	12,333.0	13,782.5
Short-term	632.8	1,886.8	2,505.4	2,833.5
Long-term	2,035.7	5,956.1	9,827.5	10,949.1
General government	39.9	38.7	37.5	36.3
Credit and loans with the IMF	0.0	0.0	0.0	0.0
Other short-term	0.0	0.0	0.0	0.0
Other long-term	39.9	38.7	37.5	36.3
Other sectors	346.1	514.1	1,526.1	3,579.7
Other financial corporations	4.6	59.5	119.4	171.4
Short-term	0.0	15.7	47.5	100.2
Long-term	4.6	43.8	72.0	71.2
Nonfinancial corporations, households, and NPISHs	341.5	454.6	1,406.7	3,408.4
Short-term	290.2	326.6	869.9	827.2
Long-term	51.4	127.9	536.8	2,581.2
Insurance, pension, and standardized guarantee schemes	0.0	0.0	0.0	0.0
Central bank	0.0	0.0	0.0	0.0
Deposit-taking corporations, except the central bank	0.0	0.0	0.0	0.0
General government	0.0	0.0	0.0	0.0
Other sectors	0.0	0.0	0.0	0.0
Other financial corporations	0.0	0.0	0.0	0.0
Nonfinancial corporations, households, NPISHs	0.0	0.0	0.0	0.0
Trade credit and advances	3,949.9	5,614.1	8,496.3	8,639.2
Central bank	0.0	0.0	0.0	0.0
Short-term	0.0	0.0	0.0	0.0
Long-term	0.0	0.0	0.0	0.0
Deposit-taking corporations, except central bank	0.0	0.0	0.0	0.0
Short-term	0.0	0.0	0.0	0.0
Long-term	0.0	0.0	0.0	0.0
General government	0.0	0.0	0.0	0.0
Short-term	0.0	0.0	0.0	0.0
Long-term	0.0	0.0	0.0	0.0
Other sectors	3,949.9	5,614.1	8,496.3	8,639.2
Other financial corporations	12.6	35.9	132.0	135.9
Short-term	12.2	34.9	131.3	91.7
Long-term	0.5	1.0	0.7	44.1
Nonfinancial corporations, households, and NPISHs	3,937.2	5,578.2	8,364.3	8,503.4
Short-term	3,635.9	5,223.7	7,252.8	7,346.8
Long-term	301.4	354.5	1,111.5	1,156.5

Other accounts receivable	618.2	630.3	715.6	554.3
Central bank	0.0	0.0	0.0	0.0
Short-term	0.0	0.0	0.0	0.0
Long-term	0.0	0.0	0.0	0.0
Deposit-taking corporations, except central bank	72.0	188.4	173.7	265.7
Short-term	72.0	188.4	173.7	265.7
Long-term	0.0	0.0	0.0	0.0
General government	46.8	35.3	0.0	0.0
Short-term	46.8	35.3	0.0	0.0
Long-term	0.0	0.0	0.0	0.0
Other sectors	499.3	406.6	541.9	288.5
Other financial corporations	0.1	0.6	4.6	3.7
Short-term	0.1	0.6	4.6	3.7
Long-term	0.0	0.0	0.0	0.0
Nonfinancial corporations, households, NPISHs	499.2	405.9	537.3	284.8
Short-term	499.2	405.9	537.3	284.8
Long-term	0.0	0.0	0.0	0.0
Reserve assets	7,069.7	19,127.0	17,629.3	19,848.6
Monetary gold	985.5	1,376.2	1,852.5	2,000.7
Gold bullion	340.9	422.3	550.0	574.1
Unallocated gold accounts	644.6	954.0	1,302.6	1,426.5
Special drawing rights	1.2	1.3	1.4	1.4
Reserve position in the IMF	0.0	0.0	0.0	0.0
Other reserve assets	6,083.0	17,749.5	15,775.4	17,846.5
Currency and deposits	671.1	6,230.2	6,490.9	6,547.4
Claims on monetary authorities	58.4	19.9	172.0	485.4
Claims on other entities	612.7	6,210.3	6,318.9	6,062.0
Securities	5,395.5	11,504.3	9,284.4	11,235.2
Debt securities	5,395.5	11,504.3	9,284.4	11,235.2
Short-term	1,103.4	2,946.6	2,192.0	2,713.0
Long-term	4,292.1	8,557.7	7,092.4	8,522.3
Equity and investment fund shares	0.0	0.0	0.0	0.0
Financial derivatives	2.9	4.2	0.0	63.8
Other claims	13.6	10.9	0.0	0.0
Liabilities	52,996.1	92,285.3	126,736.1	137,493.1
Direct investment	28,152.0	36,773.8	49,399.0	64,923.1
Equity and investment fund shares	8,930.1	11,260.8	19,318.4	24,724.3
Direct investor in direct investment enterprises	8,930.1	11,260.6	19,318.4	24,724.3
Direct investment enterprises in direct investor (reverse investment)	0.0	0.2	0.0	0.0
Between fellow enterprises	0.0	0.0	0.0	0.0
Debt instruments	19,222.0	25,513.0	30,080.6	40,198.8
Direct investor in direct investment enterprises	17,175.0	22,229.5	27,621.9	34,861.1
Direct investment enterprises in direct investor (reverse investment)	2,047.0	3,283.5	2,458.8	5,337.6
Between fellow enterprises	0.0	0.0	0.0	0.0
Portfolio investment	2,721.1	11,142.1	14,313.3	7,077.6
Equity and investment fund shares	593.2	6,942.5	10,212.2	3,923.4
Central bank	0.0	0.0	0.0	0.0
Deposit-taking corporations, except the central bank	476.9	5,466.0	5,915.0	1,898.1
General government	0.0	0.0	0.0	0.0
Other sectors	116.3	1,476.5	4,297.2	2,025.3
Other financial corporations	13.2	43.4	457.3	415.2
Nonfinancial corporations, households, and NPISHs	103.1	1,433.1	3,839.9	1,610.1

Debt securities	2,127.9	4,199.6	4,101.1	3,154.2
Central bank	99.8	1,073.0	104.8	10.0
Short-term	99.8	1,073.0	104.8	10.0
Long-term	0.0	0.0	0.0	0.0
Deposit-taking corporations, except the central bank	1,824.8	2,984.1	3,266.2	2,518.3
Short-term	0.0	0.0	0.0	0.0
Long-term	1,824.8	2,984.1	3,266.2	2,518.3
General government	52.3	53.1	60.3	23.8
Short-term	0.0	0.0	0.0	0.0
Long-term	52.3	53.1	60.3	23.8
Other sectors	151.0	89.4	669.8	602.2
Other financial corporations	3.2	50.7	620.1	540.2
Short-term	0.0	0.0	0.0	0.0
Long-term	3.2	50.7	620.1	540.2
Nonfinancial corporations, households, and NPISHs	147.8	38.7	49.7	62.0
Short-term	4.2	1.6	0.3	0.1
Long-term	143.6	37.1	49.4	61.9
Financial derivatives (other than reserves) and employee stock options	44.3	67.9	312.5	912.0
Central bank	0.0	0.0	0.0	0.0
Deposit-taking corporations, except the central bank	1.8	34.1	278.7	775.9
General government	0.0	0.0	0.0	0.0
Other sectors	42.5	33.8	33.8	136.1
Other financial corporations	0.0	0.0	0.0	94.6
Nonfinancial corporations, households, NPISHs	42.5	33.8	33.8	41.6
Other investment	22,078.7	44,301.5	62,711.3	64,580.4
Other equity	0.0	0.0	0.0	0.0
Currency and deposits	1,113.5	1,785.9	2,565.3	1,230.6
Central bank	1.0	0.8	0.0	0.3
Short-term	1.0	0.8	0.0	0.3
Long-term	0.0	0.0	0.0	0.0
Deposit-taking corporations, except the central bank	1,112.5	1,785.2	2,565.3	1,230.3
Short-term	804.2	1,297.9	1,863.9	702.7
Long-term	308.3	487.3	701.4	527.6
<i>Of which: Interbank positions</i>	595.2	1,191.8	1,132.0	603.8
General government	0.0	0.0	0.0	0.0
Short-term	0.0	0.0	0.0	0.0
Long-term	0.0	0.0	0.0	0.0
Other sectors	0.0	0.0	0.0	0.0
Other financial corporations	0.0	0.0	0.0	0.0
Short-term	0.0	0.0	0.0	0.0
Long-term	0.0	0.0	0.0	0.0
Nonfinancial corporations, households, NPISHs	0.0	0.0	0.0	0.0
Short-term	0.0	0.0	0.0	0.0
Long-term	0.0	0.0	0.0	0.0
Loans	18,393.7	38,173.3	54,081.7	57,020.6
Central bank	0.0	0.0	0.0	0.0
Credit and loans with the IMF	0.0	0.0	0.0	0.0
Other short-term	0.0	0.0	0.0	0.0
Other long-term	0.0	0.0	0.0	0.0
Deposit-taking corporations, except the central bank	12,204.2	28,187.9	39,623.3	35,092.9
Short-term	5,318.2	5,801.4	3,747.5	2,010.9
Long-term	6,885.9	22,386.5	35,875.9	33,082.0

General government	1,426.6	1,442.1	1,431.2	1,618.1
Credit and loans with the IMF	0.0	0.0	0.0	0.0
Other short-term	0.0	0.0	0.0	0.0
Other long-term	1,426.6	1,442.1	1,431.2	1,618.1
Other sectors	4,762.9	8,543.4	13,027.2	20,309.5
Other financial corporations	206.9	924.3	2,037.3	1,466.6
Short-term	57.7	12.8	107.1	7.7
Long-term	149.2	911.6	1,930.3	1,458.9
Nonfinancial corporations, households, and NPISHs	4,556.1	7,619.1	10,989.8	18,842.9
Short-term	311.5	1,149.9	1,330.3	2,239.4
Long-term	4,244.5	6,469.2	9,659.6	16,603.5
Insurance, pension, and standardized guarantee schemes	0.0	0.0	0.0	0.0
Central bank	0.0	0.0	0.0	0.0
Deposit-taking corporations except the central bank	0.0	0.0	0.0	0.0
General government	0.0	0.0	0.0	0.0
Other sectors	0.0	0.0	0.0	0.0
Other financial corporations	0.0	0.0	0.0	0.0
Nonfinancial corporations, households, NPISHs	0.0	0.0	0.0	0.0
Trade credit and advances	2,323.0	3,916.3	5,390.8	5,813.6
Central bank	0.0	0.0	0.0	0.0
Short-term	0.0	0.0	0.0	0.0
Long-term	0.0	0.0	0.0	0.0
Deposit-taking corporations, except the central bank	0.0	0.0	0.0	0.0
Short-term	0.0	0.0	0.0	0.0
Long-term	0.0	0.0	0.0	0.0
General government	0.0	0.0	0.0	0.0
Short-term	0.0	0.0	0.0	0.0
Long-term	0.0	0.0	0.0	0.0
Other sectors	2,323.0	3,916.3	5,390.8	5,813.6
Other financial corporations	22.4	46.6	69.3	43.4
Short-term	18.8	19.9	23.3	21.5
Long-term	3.6	26.8	46.0	21.9
Nonfinancial corporations, households, and NPISHs	2,300.5	3,869.7	5,321.4	5,770.2
Short-term	1,240.5	2,664.1	3,680.9	3,980.3
Long-term	1,060.0	1,205.6	1,640.5	1,789.9
Other accounts payable - other	248.5	425.9	673.6	515.7
Central bank	2.8	3.1	2.1	1.9
Short-term	0.9	1.2	0.2	0.0
Long-term	1.9	1.9	1.9	1.9
Deposit-taking corporations, except the central bank	174.8	366.2	491.4	379.7
Short-term	174.8	366.2	491.4	379.7
Long-term	0.0	0.0	0.0	0.0
General government	0.0	0.0	0.0	0.0
Short-term	0.0	0.0	0.0	0.0
Long-term	0.0	0.0	0.0	0.0
Other sectors	70.9	56.6	180.1	134.1
Other financial corporations	6.9	27.3	35.5	6.8
Short-term	6.9	27.3	35.5	6.8
Long-term	0.0	0.0	0.0	0.0
Nonfinancial corporations, households, NPISHs	64.1	29.3	144.6	127.3
Short-term	64.1	29.3	144.6	127.3
Long-term	0.0	0.0	0.0	0.0
Special drawing rights (Net incurrence of liabilities)	0.0	0.0	0.0	0.0

¹ Net means assets minus liabilities

² according to the asset/liability principle

2009	2010	2011	2012	2013	2014	2015
-43,024.2	-35,562.1	-32,817.2	-35,343.9	-33,291.1	-40,349.1	-41,471.8
104,037.9	120,221.8	145,533.5	162,809.3	176,789.1	177,748.4	157,167.9
14,008.7	19,294.0	27,805.3	28,229.9	28,841.1	29,835.1	29,757.4
10,692.0	18,443.4	24,726.5	25,560.3	26,360.5	24,688.7	23,948.7
10,637.5	18,088.6	24,098.0	25,086.5	25,709.1	24,658.6	23,918.6
54.5	354.8	628.5	473.8	651.4	0.0	0.0
0.0	0.0	0.0	0.0	0.0	30.1	30.1
3,316.7	850.6	3,078.8	2,669.6	2,480.6	5,146.3	5,808.7
3,089.5	676.0	995.0	1,071.3	573.9	2,364.3	755.0
227.2	174.6	748.7	550.0	881.0	2,137.5	4,274.6
0.0	0.0	1,335.1	1,048.3	1,025.7	644.4	779.1
28,076.2	33,989.4	47,095.1	62,811.8	72,797.6	77,045.2	64,893.1
4,400.2	5,143.1	5,246.6	7,047.9	11,235.0	11,653.8	9,195.0
0.0	0.0	0.0	0.0	0.0	0.0	0.0
26.0	38.2	30.1	12.2	4.0	4.2	0.7
3,460.9	4,321.0	4,734.8	6,606.4	10,820.9	11,313.0	9,023.8
913.2	783.9	481.7	429.3	410.0	336.6	170.5
596.2	543.4	372.9	307.9	286.7	257.3	109.0
317.0	240.5	108.8	121.3	123.4	79.3	61.5
23,676.1	28,846.3	41,848.5	55,763.9	61,562.7	65,391.4	55,698.1
114.0	0.0	0.0	0.0	49.4	49.5	99.3
0.0	0.0	0.0	0.0	49.4	20.2	26.2
114.0	0.0	0.0	0.0	0.0	29.3	73.1
955.9	778.7	977.5	1,274.7	1,505.5	1,144.1	340.0
0.0	0.0	0.0	0.0	0.0	0.0	0.0
955.9	778.7	977.5	1,274.7	1,505.5	1,144.1	340.0
20,198.5	26,140.9	37,782.2	50,652.8	56,274.5	60,668.0	53,028.0
5,725.6	8,323.3	17,365.3	16,503.2	19,659.8	22,261.7	13,998.7
14,472.9	17,817.6	20,416.9	34,149.6	36,614.6	38,406.2	39,029.4
2,407.6	1,926.6	3,088.8	3,836.4	3,733.3	3,529.9	2,230.8
2,272.6	1,890.2	3,058.1	2,851.6	3,687.0	3,465.9	2,163.2
1.7	2.8	22.0	371.3	419.6	434.4	340.2
2,270.9	1,887.4	3,036.0	2,480.3	3,267.4	3,031.5	1,823.0
135.1	36.4	30.7	984.8	46.3	64.0	67.5
0.9	0.0	0.0	0.0	0.0	7.6	6.0
134.2	36.4	30.7	984.8	46.3	56.4	61.6
581.6	213.7	116.9	136.7	161.7	96.0	70.8
0.0	0.0	0.0	0.0	0.0	0.0	0.0
583.8	205.3	115.6	140.9	139.9	85.1	59.6
-2.6	8.1	0.8	-4.5	20.5	8.4	9.5
0.4	0.3	0.6	0.3	1.3	2.4	1.7
0.3	0.3	0.6	0.3	0.3	0.4	0.1
0.1	0.0	0.0	0.0	1.0	2.1	1.6
38,296.9	38,479.1	41,216.6	43,362.1	50,273.5	41,563.6	34,575.2
615.9	620.4	628.6	645.0	860.2	1,158.2	1,219.5
10,048.1	11,611.4	12,848.0	11,506.0	15,050.9	10,688.8	8,766.8
2.4	7.4	9.0	12.6	5.8	300.7	380.5
2.4	7.4	9.0	12.6	5.8	65.4	182.8
0.0	0.0	0.0	0.0	0.0	235.3	197.7

2,357.1	2,439.6	2,789.0	2,810.9	4,038.8	3,027.6	1,347.9
0.0	0.0	1.6	0.0	0.1	0.0	0.0
0.0	0.0	1.6	0.0	0.1	0.0	0.0
0.0	0.0	0.0	0.0	0.0	0.0	0.0
1,837.1	1,764.6	1,773.4	1,704.8	2,962.9	2,795.9	82.1
1,837.1	1,764.6	1,773.4	1,704.8	2,962.9	2,795.9	82.1
0.0	0.0	0.0	0.0	0.0	0.0	0.0
0.0	0.0	0.0	0.0	0.0	0.0	0.0
0.0	0.0	0.0	0.0	0.0	0.0	0.0
0.0	0.0	0.0	0.0	0.0	0.0	0.0
520.0	675.0	1,014.0	1,106.1	1,075.8	231.6	1,265.8
54.2	47.6	63.0	77.5	76.5	45.9	1,057.0
54.2	47.6	63.0	77.5	76.5	8.8	999.0
0.0	0.0	0.0	0.0	0.0	37.1	58.0
465.8	627.4	951.0	1,028.6	999.4	185.7	208.8
465.8	627.4	951.0	1,028.6	999.4	9.9	83.5
0.0	0.0	0.0	0.0	0.0	175.8	125.3
23,074.6	28,245.6	29,299.5	28,268.8	24,715.2	29,208.5	27,871.3
2,500.7	3,052.2	4,150.8	6,148.4	5,551.2	7,394.7	7,576.1
724.0	922.9	1,032.9	3,793.0	3,603.4	4,588.4	5,085.8
1,776.7	2,129.3	3,117.9	2,355.3	1,947.8	2,806.3	2,490.3
538.2	530.6	527.3	531.2	536.4	504.5	504.6
0.0	0.0	0.0	0.0	0.0	0.0	0.0
20,035.8	24,662.7	24,621.4	21,589.2	18,627.6	21,309.3	19,790.6
8,871.4	4,552.4	1,925.8	4,227.5	4,636.8	6,196.6	10,469.5
2,551.9	3,317.9	244.2	115.5	240.6	513.3	837.4
6,319.6	1,234.5	1,681.5	4,112.0	4,396.3	5,683.3	9,632.1
11,172.9	20,082.9	22,711.9	17,372.2	13,988.0	15,106.4	9,308.8
11,172.9	20,082.9	22,711.9	16,759.3	12,880.7	14,413.0	9,308.8
1,567.3	514.9	2,673.4	0.0	126.4	4,721.3	1,562.2
9,605.6	19,568.0	20,038.5	16,759.3	12,754.3	9,691.7	7,746.6
0.0	0.0	0.0	612.9	1,107.2	693.5	0.0
-8.6	27.5	-16.3	-10.5	2.8	6.3	12.3
0.0	0.0	0.0	0.0	0.0	0.0	0.0
147,062.1	155,783.9	178,350.7	198,153.3	210,080.2	218,097.5	198,639.6
78,771.4	85,730.2	112,457.9	125,245.7	130,690.3	136,858.9	139,664.1
29,139.4	33,455.4	49,881.7	57,637.4	56,510.9	57,277.2	43,531.9
29,139.4	33,455.4	49,881.7	57,637.4	56,510.9	57,214.1	43,468.7
0.0	0.0	0.0	0.0	0.0	0.0	0.0
0.0	0.0	0.0	0.0	0.0	63.0	63.2
49,632.0	52,274.7	62,576.2	67,608.3	74,179.5	79,581.8	96,132.2
42,988.4	49,721.8	59,589.4	63,632.6	69,896.5	72,667.2	76,338.1
6,643.6	2,553.0	2,597.8	3,429.2	3,392.2	1,536.4	932.7
0.0	0.0	389.0	546.5	890.7	5,378.2	18,861.4
8,568.1	23,790.2	21,036.8	21,199.6	22,144.3	25,594.5	20,146.7
4,486.2	3,761.3	2,814.6	3,415.6	3,414.4	3,089.9	1,491.0
0.0	0.0	0.0	0.0	0.0	0.0	0.0
796.9	630.3	412.2	431.3	564.6	581.1	262.5
0.0	0.0	0.0	0.0	0.0	0.0	0.0
3,689.4	3,131.0	2,402.5	2,984.3	2,849.7	2,508.9	1,228.5
293.5	47.8	21.1	17.7	20.5	10.0	84.5
3,395.9	3,083.2	2,381.3	2,966.6	2,829.3	2,498.8	1,144.0

4,081.9	20,028.9	18,222.2	17,783.9	18,729.9	22,504.6	18,655.7
376.1	230.9	19.8	0.0	0.0	0.0	0.0
376.1	230.9	19.8	0.0	0.0	0.0	0.0
0.0	0.0	0.0	0.0	0.0	0.0	0.0
2,905.5	10,695.5	7,916.3	6,639.8	5,739.7	4,704.1	3,999.9
0.0	0.0	0.0	0.0	0.0	0.0	0.0
2,905.5	10,695.5	7,916.3	6,639.8	5,739.7	4,704.1	3,999.9
0.0	49.1	31.6	14.1	14.7	1,887.6	5,038.0
0.0	0.0	7.8	0.0	0.0	0.0	0.0
0.0	49.1	23.8	14.1	14.7	1,887.6	5,038.0
800.3	9,053.4	10,254.4	11,130.1	12,975.6	15,912.8	9,617.8
684.0	703.2	757.6	714.5	1,528.0	1,956.1	1,391.6
0.0	0.0	0.0	0.0	0.0	0.0	0.0
684.0	703.2	757.6	714.5	1,528.0	1,956.1	1,391.6
116.3	8,350.2	9,496.8	10,415.6	11,447.5	13,956.8	8,226.1
0.1	0.0	0.0	0.0	0.0	0.0	0.0
116.2	8,350.2	9,496.8	10,415.6	11,447.5	13,956.8	8,226.1
569.7	344.4	333.6	182.0	89.6	133.7	210.4
0.0	0.0	0.0	0.0	0.0	0.0	0.0
547.8	323.4	311.7	161.5	72.9	117.4	194.7
0.0	0.0	0.0	0.0	0.0	0.0	0.0
21.8	21.0	21.9	20.5	16.7	16.3	15.8
2.2	0.6	0.5	0.8	0.5	0.5	0.0
19.7	20.5	21.4	19.8	16.2	15.7	15.8
59,153.0	45,919.1	44,522.4	51,526.0	57,155.9	55,510.3	38,618.4
0.0	0.0	0.0	0.0	32.5	35.2	21.4
1,230.9	1,790.0	1,050.8	1,719.9	1,780.8	2,247.1	1,135.5
103.6	239.5	16.5	88.1	6.7	443.2	411.0
103.6	239.5	16.5	88.1	6.7	209.3	70.9
0.0	0.0	0.0	0.0	0.0	233.9	340.0
1,127.3	1,550.5	1,034.3	1,631.9	1,774.1	1,803.9	724.5
837.6	1,275.4	772.1	1,203.3	829.5	988.0	575.1
289.7	275.1	262.2	428.5	944.6	816.0	149.4
537.2	874.4	446.4	405.1	879.5	800.4	177.0
0.0	0.0	0.0	0.0	0.0	0.0	0.0
0.0	0.0	0.0	0.0	0.0	0.0	0.0
0.0	0.0	0.0	0.0	0.0	0.0	0.0
0.0	0.0	0.0	0.0	0.0	0.0	0.0
0.0	0.0	0.0	0.0	0.0	0.0	0.0
0.0	0.0	0.0	0.0	0.0	0.0	0.0
0.0	0.0	0.0	0.0	0.0	0.0	0.0
0.0	0.0	0.0	0.0	0.0	0.0	0.0
0.0	0.0	0.0	0.0	0.0	0.0	0.0
0.0	0.0	0.0	0.0	0.0	0.0	0.0
0.0	0.0	0.0	0.0	0.0	0.0	0.0
51,424.6	36,279.6	35,478.0	40,763.5	45,182.8	43,252.6	29,097.1
0.0	0.0	0.0	0.0	0.0	0.0	0.0
0.0	0.0	0.0	0.0	0.0	0.0	0.0
0.0	0.0	0.0	0.0	0.0	0.0	0.0
0.0	0.0	0.0	0.0	0.0	0.0	0.0
25,701.8	7,582.5	5,510.5	5,169.9	3,565.1	3,483.6	3,208.2
353.1	227.7	130.8	360.9	316.6	351.8	149.1
25,348.8	7,354.7	5,379.6	4,809.0	3,248.5	3,131.9	3,059.1

2,218.1	3,751.2	4,455.7	4,840.9	5,101.0	5,369.7	6,214.5
0.0	0.0	0.0	0.0	0.0	0.0	0.0
0.0	0.0	0.0	0.0	0.0	0.0	0.0
2,218.1	3,751.2	4,455.7	4,840.9	5,101.0	5,369.7	6,214.5
23,504.6	24,945.9	25,511.9	30,752.6	36,516.7	34,399.3	19,674.4
1,223.9	1,158.2	1,287.9	1,180.5	1,183.5	1,313.0	986.3
11.1	58.0	12.3	16.4	36.7	17.0	11.9
1,212.9	1,100.2	1,275.6	1,164.0	1,146.7	1,295.9	974.4
22,280.7	23,787.7	24,224.0	29,572.2	35,333.2	33,086.3	18,688.1
907.4	1,229.7	1,163.5	852.8	864.3	1,097.3	446.0
21,373.3	22,558.0	23,060.5	28,719.3	34,468.9	31,989.0	18,242.1
0.0	0.0	0.0	0.0	88.5	127.2	88.3
0.0	0.0	0.0	0.0	0.0	0.0	0.0
0.0	0.0	0.0	0.0	0.0	0.0	0.0
0.0	0.0	0.0	0.0	0.0	0.0	0.0
0.0	0.0	0.0	0.0	88.5	127.2	88.3
0.0	0.0	0.0	0.0	88.5	127.2	88.3
0.0	0.0	0.0	0.0	0.0	0.0	0.0
5,352.0	7,021.7	7,177.4	8,255.1	9,237.7	8,969.5	7,425.5
0.0	0.0	0.0	0.0	0.0	0.0	0.0
0.0	0.0	0.0	0.0	0.0	0.0	0.0
0.0	0.0	0.0	0.0	0.0	0.0	0.0
0.0	0.0	0.0	0.0	0.0	0.0	0.0
0.0	0.0	0.0	0.0	0.0	0.0	0.0
0.0	0.0	0.0	0.0	0.0	0.0	0.0
0.0	0.0	0.0	0.0	0.0	0.0	0.0
0.0	0.0	0.1	0.1	0.0	0.0	17.8
0.0	0.0	0.1	0.1	0.0	0.0	17.8
0.0	0.0	0.0	0.0	0.0	0.0	0.0
5,352.0	7,021.7	7,177.3	8,255.0	9,237.7	8,969.5	7,407.7
56.3	41.1	66.3	82.7	91.9	35.2	24.6
35.8	41.1	66.3	69.6	73.5	31.8	23.0
20.5	0.0	0.0	13.0	18.4	3.3	1.6
5,295.6	6,980.6	7,111.0	8,172.3	9,145.9	8,934.4	7,383.1
3,752.5	5,264.5	5,388.8	6,238.3	7,145.1	6,778.3	5,036.6
1,543.1	1,716.0	1,722.2	1,934.0	2,000.8	2,156.1	2,346.6
608.9	298.6	290.3	257.7	298.6	375.5	368.8
1.0	1.0	1.0	1.0	5.0	7.3	6.0
0.0	0.0	0.0	0.0	4.0	6.3	5.0
1.0	1.0	1.0	1.0	1.0	1.0	1.0
455.5	119.4	143.7	83.3	81.5	127.8	40.2
455.5	119.4	143.7	83.3	81.5	127.8	40.2
0.0	0.0	0.0	0.0	0.0	0.0	0.0
0.0	0.0	0.0	0.0	101.9	75.2	39.0
0.0	0.0	0.0	0.0	0.0	0.0	0.0
0.0	0.0	0.0	0.0	101.9	75.2	39.0
152.4	178.2	145.5	173.4	110.2	165.2	283.6
6.6	7.9	22.1	4.6	5.3	30.4	102.2
6.6	7.9	22.1	4.6	5.3	19.2	22.5
0.0	0.0	0.0	0.0	0.0	11.2	79.7
145.7	170.3	123.5	168.8	104.8	134.8	181.4
145.7	170.3	123.5	168.8	104.8	87.0	80.4
0.0	0.0	0.0	0.0	0.0	47.8	100.9
536.8	529.2	525.9	529.8	535.0	503.2	481.8

Row's code
1=2-141
2=3+12+37+44 +124
3=4+8
4=5+6+7
5
6
7
8=9+10+11
9
10
11
12=13+20
13=14+15+16+17
14
15
16
17=18+19
18
19
20=21+24+27+30
21=22+23
22
23
24=25+26
25
26
27=28+29
28
29
30=31+34
31=32+33
32
33
34=35+36
35
36
37=38+39+40+41
38
39
40
41=42+43
42
43
44=45+46+64+83+ 90+107
45
46=47+50+54+57
47=48+49
48
49

$50=51+52$
51
52
$53=\text{часть } 50$
$54=55+56$
55
56
$57=58+61$
$58=59+60$
59
60
$61=62+63$
62
63
$64=65+69+72+76$
$65=66+67+68$
66
67
68
$69=70+71$
70
71
$72=73+74+75$
73
74
75
$76=77+80$
$77=78+79$
78
79
$80=81+82$
81
82
$83=84+85+86+87$
84
85
86
$87=88+89$
88
89
$90=91+94+97+100$
$91=92+93$
92
93
$94=95+96$
95
96
$97=98+99$
98
99
$100=101+104$
$101=102+103$
102
103
$104=105+106$
105
106

107=108+111+114
108=109+110
109
110
111=112+113
112
113
114=115+116
115
116
117=118+121
118=119+120
119
120
121=122+123
122
123
124=125+128+129 +130
125=126+127
126
127
128
129
130=131+134+139 +140
131=132+133
132
133
134=135+138
135=136+137
136
137
138
139
140
141=142+151+176 +183
142=143+147
143=144+145+146
144
145
146
147=148+149+150
148
149
150
151=152+159
152=153+154+155
153
154
155
156=157+158
157
158

159=160+163+166 +169
160=161+162
161
162
163=164+165
164
165
166=167+168
167
168
169=170+173
170=171+172
171
172
173=174+175
174
175
176=177+178+179 +180
177
178
179
180=181+182
181
182
183=184+185+ 203+222+229+ 246+263
184
185=186+189+ 193+196
186=187+188
187
188
189=190+191
190
191
192=часть 189
193=194+195
194
195
196=197+200
197=198+199
198
199
200=201+202
201
202
203=204+208+ 211+215
204=205+206+207
205
206
207
208=209+210
209
210

211=212+213+214
212
213
214
215=216+219
216=217+218
217
218
219=220+221
220
221
222=223+224+ 225+226
223
224
225
226=227+228
227
228
229=230+233+ 236+239
230=231+232
231
232
233=234+235
234
235
236=237+238
237
238
239=240+243
240=241+242
241
242
243=244+245
244
245
246=247+250+ 253+256
247=248+249
248
249
250=251+252
251
252
253=254+255
254
255
256=257+260
257=258+259
258
259
260=261+262
261
262
263

International Investment Position of Kazakhstan by residents' economic sectors (positio

mln \$

	2005	2006	2007	2008
Net International Investment Position²	-20,273.6	-28,958.4	-44,307.5	-38,830.4
of which net external debt ³	13,411.3	16,876.1	25,362.3	23,340.3
<i>Net equity and investment fund shares</i>	-7,326.1	-12,698.9	-20,048.0	-16,513.0
<i>Net debt instruments</i>	-13,411.3	-16,876.1	-25,362.3	-23,340.3
<i>Net other claims and liabilities</i>	463.8	616.6	1,102.9	1,022.8
Central bank	6,967.8	18,053.3	17,543.2	19,841.6
of which net external debt	-6,624.0	-17,626.9	-16,993.2	-19,203.6
Assets	7,071.3	19,130.2	17,650.1	19,853.7
Equity and investment fund shares	0.0	0.0	0.0	0.0
Debt instruments	6,727.5	18,703.7	17,100.1	19,215.8
Other claims	343.8	426.4	550.0	637.9
Liabilities	103.5	1,076.8	106.9	12.1
Equity and investment fund shares	0.0	0.0	0.0	0.0
Debt instruments	103.5	1,076.8	106.9	12.1
Other liabilities	0.0	0.0	0.0	0.0
Banks	-7,250.1	-22,937.0	-33,227.5	-20,778.3
of which net external debt	6,636.9	16,477.4	24,017.1	15,820.5
Assets	8,731.9	17,052.1	23,101.9	25,342.7
Equity and investment fund shares	50.6	128.3	476.6	993.1
Debt instruments	8,679.4	16,846.0	21,929.1	23,400.7
Other claims	1.9	77.8	696.2	948.9
Liabilities	15,982.1	39,989.1	56,329.4	46,121.0
Equity and investment fund shares	664.0	6,631.6	10,104.5	6,123.9
Debt instruments	15,316.3	33,323.4	45,946.2	39,221.2
Other liabilities	1.8	34.1	278.7	775.9
General government	6,638.2	12,857.3	19,947.5	26,315.4
of which net external debt	-5,189.4	-9,421.1	-15,304.5	-23,073.2
Assets	8,117.1	14,352.5	21,439.0	27,957.3
Equity and investment fund shares	1,443.2	3,426.0	4,644.2	3,210.5
Debt instruments	6,668.4	10,916.3	16,796.0	24,715.1
Other claims	5.6	10.2	-1.1	31.7
Liabilities	1,478.9	1,495.2	1,491.5	1,641.9
Equity and investment fund shares	0.0	0.0	0.0	0.0
Debt instruments	1,478.9	1,495.2	1,491.5	1,641.9
Other liabilities	0.0	0.0	0.0	0.0
Other sectors	-26,629.4	-36,932.1	-48,570.7	-64,209.1
of which net external debt	18,587.9	27,446.7	33,642.9	49,796.6
where net intercompany lending	18,502.0	24,668.3	27,374.0	39,275.2
Assets	8,802.2	12,792.1	20,237.7	25,509.0
Equity and investment fund shares	703.4	1,950.0	4,361.8	7,931.2
Debt instruments	7,941.9	10,672.0	15,705.5	17,261.6
Other claims	156.9	170.1	170.4	316.3
Liabilities	35,431.6	49,724.2	68,808.4	89,718.1
Equity and investment fund shares	8,859.4	11,571.7	19,426.2	22,523.8

Debt instruments	26,529.8	38,118.7	49,348.4	67,058.2
Other liabilities	42.5	33.8	33.8	136.1
Other financial corporations	85.6	-456.1	-1,185.2	76.8
of which net external debt	-110.0	372.7	1,530.2	459.2
where net intercompany lending	0.8	67.5	175.1	384.6
Assets	444.9	846.4	2,585.5	3,450.9
Equity and investment fund shares	90.1	92.4	1,161.2	1,323.7
Debt instruments	354.8	754.0	1,424.0	2,004.8
Other claims	0.0	0.0	0.3	122.4
Liabilities	359.3	1,302.5	3,770.7	3,374.1
Equity and investment fund shares	114.5	175.8	816.5	815.6
Debt instruments	244.8	1,126.7	2,954.1	2,464.0
Other liabilities	0.0	0.0	0.0	94.6
Nonfinancial corporations, households, and NPISHs	-26,715.1	-36,476.0	-47,385.5	-64,285.8
of which net external debt	18,697.8	27,074.0	32,112.7	49,337.4
where net intercompany lending	18,501.2	24,600.7	27,198.9	38,890.5
Assets	8,357.3	11,945.7	17,652.2	22,058.1
Equity and investment fund shares	613.3	1,857.6	3,200.6	6,607.4
Debt instruments	7,587.1	9,918.0	14,281.5	15,256.8
Other claims	156.9	170.1	170.1	193.9
Liabilities	35,072.3	48,421.7	65,037.7	86,344.0
Equity and investment fund shares	8,744.9	11,395.9	18,609.6	21,708.2
Debt instruments	26,285.0	36,992.0	46,394.3	64,594.2
Other liabilities	42.5	33.8	33.8	41.6

¹ all types of investments were classified by economic sectors: direct, portfolio, other, derivatives, reserve assets

² net means assets minus liabilities

³ net external debt means liabilities minus debt instruments assets

⁴ include equity and investment fund shares

⁵ include currency and deposits, debt securities, loans, insurance, pension, and standardized guarantee schemes ,

⁶ include monetary gold, derivatives and employee stock options

on as of "date")¹

2009	2010	2011	2012	2013	2014	2015	Row's code
-43,024.2	-35,562.1	-32,817.2	-35,343.9	-33,291.1	-40,349.1	-41,471.8	1=3+4+5= 6+16+26+36
25,834.0	23,372.0	11,522.6	11,894.2	16,574.5	22,697.9	35,749.1	2=-4= 7+17+27+37
-17,917.5	-13,009.8	-22,094.6	-27,186.9	-20,394.9	-22,208.2	-10,681.2	3=9-13+19- 23+29-33+40- 44
-25,834.0	-23,372.0	-11,522.6	-11,894.2	-16,574.5	-22,697.9	-35,749.1	4=10-14+20- 24+30-34+41- 45
727.3	819.7	799.9	3,737.3	3,678.3	4,557.0	4,958.5	5=11-15+21- 25+31-35+42- 46
22,173.5	27,252.4	28,746.8	27,662.6	24,313.5	28,808.3	27,859.1	6=8-12
-21,458.1	-26,302.0	-27,730.2	-23,267.1	-19,600.1	-23,520.2	-22,606.5	7=14-10
23,191.0	28,253.0	29,310.1	28,281.5	24,860.2	29,762.0	28,757.9	8=9+10+11
0.0	0.0	0.0	612.9	1,107.2	693.5	154.4	9
22,475.6	27,302.6	28,293.5	23,886.0	20,146.8	24,473.8	23,505.4	10
715.4	950.4	1,016.6	3,782.5	3,606.2	4,594.7	5,098.1	11
1,017.5	1,000.6	563.3	618.9	546.7	953.7	898.8	12=13+14+15
0.0	0.0	0.0	0.0	0.0	0.0	0.0	13
1,017.5	1,000.6	563.3	618.9	546.7	953.7	898.8	14
0.0	0.0	0.0	0.0	0.0	0.0	0.0	15
-11,508.4	-4,359.7	3,432.4	4,588.9	12,385.9	6,623.1	-4,135.2	16=18-22
7,377.9	354.9	-7,074.4	-8,510.8	-14,416.9	-8,774.2	2,782.6	17=24-20
24,229.9	20,590.0	22,408.0	22,721.5	26,257.6	19,377.3	5,528.4	18=19+20+21
834.0	791.7	613.3	544.9	540.4	398.5	278.7	19
22,812.1	19,593.0	21,679.1	22,035.7	25,577.3	18,893.6	5,190.2	20
583.8	205.3	115.6	140.9	139.9	85.1	59.6	21
35,738.3	24,949.7	18,975.6	18,132.6	13,871.6	12,754.3	9,663.6	22=23+24+25
5,000.4	4,678.4	4,059.2	4,446.2	2,638.3	2,517.4	1,496.2	23
30,190.1	19,947.9	14,604.8	13,524.9	11,160.4	10,119.5	7,972.8	24
547.8	323.4	311.7	161.5	72.9	117.4	194.7	25
22,785.1	27,879.0	42,474.5	55,443.5	67,556.5	68,143.1	54,118.3	26=28-32
-18,710.9	-22,929.5	-34,511.2	-46,497.7	-54,778.8	-54,597.4	-43,170.0	27=34-30
25,003.2	31,679.3	46,961.9	60,298.6	72,774.1	75,475.6	65,427.7	28=29+30+31
4,076.9	4,941.4	7,962.5	8,950.3	12,757.3	13,537.3	10,938.9	29
20,929.0	26,729.8	38,998.6	51,352.8	59,996.4	61,930.0	54,479.3	30
-2.6	8.1	0.8	-4.5	20.5	8.4	9.5	31
2,218.1	3,800.3	4,487.4	4,855.1	5,217.6	7,332.5	11,309.3	32=33+34+35
0.0	0.0	0.0	0.0	0.0	0.0	0.0	33
2,218.1	3,800.3	4,487.4	4,855.1	5,217.6	7,332.5	11,309.3	34
0.0	0.0	0.0	0.0	0.0	0.0	0.0	35
-76,474.5	-86,333.8	-107,470.9	-123,038.8	-137,547.1	-143,923.6	-119,314.0	36=39- 43=47+58
58,625.1	72,248.5	80,838.4	90,169.9	105,370.3	109,589.7	98,743.0	37=45-41
46,315.4	51,424.2	59,497.4	64,938.7	71,698.9	74,435.5	90,323.5	38
31,613.7	39,699.5	46,853.5	51,507.8	52,897.2	53,133.4	57,453.9	39=40+41+42
10,797.2	18,473.8	22,026.0	23,758.1	25,158.0	23,564.8	22,991.3	40
20,816.1	21,225.4	24,827.0	27,749.4	27,737.9	29,566.2	34,460.9	41
0.4	0.3	0.6	0.3	1.3	2.4	1.7	42
108,088.3	126,033.3	154,324.4	174,546.6	190,444.3	197,057.0	176,767.9	43=44+45+46
28,625.2	32,538.3	48,637.1	56,606.8	57,319.4	57,884.9	43,548.2	44

79,441.2	93,473.9	105,665.3	117,919.3	133,108.2	139,155.8	133,203.9	45
21.8	21.0	21.9	20.5	16.7	16.3	15.8	46
1,090.4	758.7	1,578.1	-1,252.2	-157.8	-1,546.7	9,281.3	47=50-54
-414.5	-287.9	-1,305.8	-1,181.8	-1,100.5	-215.4	-10,107.9	48=56-52
304.3	229.0	104.8	191.1	231.9	178.2	145.7	49
4,011.3	3,539.1	4,518.1	4,021.0	6,046.7	5,267.7	14,160.9	50=51+52+53
1,296.3	1,090.3	931.5	648.2	1,748.1	1,180.5	1,070.1	51
2,714.8	2,448.5	3,586.1	3,372.5	4,298.3	4,086.8	13,090.7	52
0.3	0.3	0.6	0.3	0.3	0.4	0.1	53
2,920.9	2,780.4	2,940.0	5,273.1	6,204.5	6,814.3	4,879.6	54=55+56+57
618.5	619.2	659.2	3,081.7	3,006.2	2,942.5	1,896.8	55
2,300.2	2,160.6	2,280.3	2,190.7	3,197.8	3,871.3	2,982.8	56
2.2	0.6	0.5	0.8	0.5	0.5	0.0	57
-77,565.0	-87,092.5	-109,049.1	-121,786.6	-137,389.3	-142,376.9	-128,595.3	58=61-62
59,039.7	72,536.4	82,144.2	91,351.6	106,470.8	109,805.1	108,850.9	59=67-63
46,011.1	51,195.1	59,392.6	64,747.6	71,467.0	74,257.3	90,177.7	60
27,602.4	36,160.4	42,335.3	47,486.8	46,850.5	47,865.8	43,293.0	61=62+63+64
9,501.0	17,383.5	21,094.5	23,109.9	23,409.8	22,384.3	21,921.2	62
18,101.3	18,776.9	21,240.8	24,376.9	23,439.6	25,479.4	21,370.2	63
0.1	0.0	0.0	0.0	1.0	2.1	1.6	64
105,167.3	123,252.9	151,384.4	169,273.5	184,239.8	190,242.7	171,888.3	65=66+67+68
28,006.7	31,919.1	47,977.9	53,525.2	54,313.2	54,942.4	41,651.4	66
77,141.0	91,313.3	103,385.1	115,728.6	129,910.4	135,284.5	130,221.1	67
19.7	20.5	21.4	19.8	16.2	15.7	15.8	68

trade credit and advances, special drawing rights, other accounts receivable

International investment position (IIP) of Kazakhstan by countries

Country name	IIP, net ¹ as of 31/12/2015 (2-8)	total
		(3+4+5+6+7)
TOTAL	-41,756	156,696
United States of America	28,764.9	52,500.3
Not determined by country	7,671.0	8,693.7
Germany	4,021.5	4,989.5
Seychelles	2,646.2	2,841.4
Australia	2,376.1	2,409.8
Other countries	2,046.4	
CANADA	1,898.5	3,038.9
IRELAND	1,483.3	1,542.5
LUXEMBURG	1,283.4	2,141.8
CYPRUS	1,220.7	1,772.6
SOUTH KOREA	1,055.3	2,949.3
KYRGYZSTAN	648.5	755.7
SINGAPORE	601.9	1,449.8
FINLAND	491.3	548.7
TURKEY	456.3	1,288.9
NORWAY	448.8	461.3
BELGIUM	356.8	806.5
DENMARK	180.4	214.6
BAHAMAS	156.5	140.3
JERSEY	153.4	161.0
GEORGIA	151.9	237.9
MEXICO	127.4	127.9
VIRGIN ISLANDS OF THE US	125.1	125.3
INDONESIA	124.6	126.8
POLAND	113.9	183.7
BRAZIL	108.1	108.7
COLOMBIA	101.5	101.6
PHILIPPINES	88.4	88.6
SPAIN	84.7	166.7
REP. OF SOUTH AFRICA	79.8	92.8
TADJIKISTAN	79.8	117.7
LATVIA	74.9	156.5
QATAR	58.4	86.1
LIBERIA	41.3	41.3
PERU	37.6	37.6
CURACAO	36.7	42.7
NEW ZEALAND	29.7	32.1
ALBANIA	24.3	26.4
CHILE	24.2	25.0
SERBIA	23.9	26.4
PORTUGAL	17.6	21.7
CROATIA	14.4	17.4
ARMENIA	10.7	15.8
NAMIBIA	6.6	6.6
NIGERIA	5.7	5.7
THAILAND	5.6	8.2
MARSHALL ISLANDS	5.2	93.4
MONGOLIA	3.2	10.0
ECUADOR	2.4	2.6

MACAO	1.1	1.1
A	1	2
TANZANIA	0.5	0.5
CAMEROON	0.5	0.5
MONACO	0.4	0.4
ARGENTINA	0.4	0.7
GHANA	0.3	0.3
MOROCCO	0.3	0.3
BHUTAN	0.2	0.2
PUERTO RICO	0.1	0.1
ANGOLA	0.1	0.1
LIBYA	0.1	0.1
BOLIVIA	0.1	0.1
TRINIDAD & TOBAGO	0.0	0.1
UGANDA	0.0	0.0
PAPUA NEW GUINEA	0.0	0.0
EL SALVADOR	0.0	0.0
EASTERN SAMOA (USA)	0.0	0.0
SENEGAL	0.0	0.0
HAITI	0.0	0.0
HONDURAS	0.0	0.0
BRUNEI	0.0	0.0
CAMBODIA	0.0	0.0
PALESTINIAN TERRITORY, OCCUPIED	0.0	0.0
MYANMAR (BURMA)	0.0	0.0
NEPAL	0.0	0.0
KIRIBATI	0.0	0.0
SURINAME	0.0	0.0
MAURITANIA	0.0	0.0
NOTHERN MARIANA ISLANDS	0.0	0.0
YEMEN	0.0	0.0
FIJI	0.0	0.0
GREENLAND	0.0	0.0
ANDORRA	0.0	0.0
RWANDA	0.0	0.0
ZIMBABWE	0.0	0.0
CAPE VERDE	0.0	0.0
FEDERATED STATES OF MICRONESIA	0.0	0.0
TUVALU	0.0	0.0
BOSNIA-HERCEGOVINA	0.0	0.0
VATICAN CITI STATE	0.0	0.0
ETHIOPIA	0.0	0.0
GUAM	0.0	0.0
LESOTHO	0.0	0.0
COTE D'IVOIRY	0.0	0.0
MAKEDONIA	0.0	0.0
JAMAICA	0.0	0.0
BANGLADESH	0.0	0.1
MALI	0.0	0.0
TUNISIA	0.0	0.0
SUDAN	0.0	0.0
MONTENEGRO	0.0	0.0
SYRIA	0.0	0.0
GUATEMALA	-0.1	0.1
CONGO, THE DEMOCRATIC REPUBLIC OF THE	-0.1	0.0
MALDIVES	-0.1	0.0
COSTA RICA	-0.1	0.1
CUBA	-0.1	0.0

SRI LANKA	-0.1	0.0
VENEZUELA	-0.2	0.1
IRAQ	-0.3	0.2
VIETNAM	-0.3	0.2
ALGERIA	-0.3	0.0
WESTERN SAMOA	-0.6	0.0
ICELAND	-0.8	0.1
KENYA	-1.3	0.3
TAIWAN	-1.4	1.4
DOMINICA	-2.4	13.7
GREECE	-2.5	0.7
EGYPT	-3.1	0.5
UZBEKISTAN	-3.5	224.4
URUGUAY	-4.6	0.0
TURKMENISTAN	-5.5	6.7
JORDAN	-6.4	0.0
CHANNEL ISLANDS	-6.7	0.0
MALTA	-7.5	4.1
OMAN	-9.2	0.0
BARBADOS	-10.2	0.0
ANGUILLA	-10.5	0.0
AFGHANISTAN	-11.2	17.1
LITHUANIA	-11.5	90.6
BAHRAIN	-12.1	8.3
BULGARIA	-13.7	2.4
GIBRALTAR	-13.9	0.0
PAKISTAN	-16.4	1.3
IRAN	-16.9	24.6
DOMINICIAN REPUBLIC	-17.6	0.2
MAURITIUS	-18.5	4.9
ST VINCENT	-18.6	0.8
KUWAIT	-22.4	0.0
ESTONIA	-22.9	35.7
HUNGARY	-30.3	26.4
MOLDOVA	-31.5	4.1
CZECH REPUBLIC	-32.3	46.3
ISRAEL	-37.1	31.6
SLOVENIA	-48.0	2.2
PANAMA	-50.8	61.9
AZERBAIJAN	-53.6	24.2
BELARUS	-62.2	43.7
ITALY	-68.4	244.3
SLOVAKIA	-72.2	2.2
ISLE OF MAN	-76.1	18.1
UKRAINE	-82.9	93.5
BELIZE	-86.2	7.6
LEBANON	-89.2	2.0
SAUDA ARABIA	-102.9	0.5
LIECHTENSTEIN	-228.5	0.1
ST KITT & NEVIS	-242.2	22.3
ROMANIA	-248.8	187.1
INDIA	-255.4	35.6
SWEDEN	-397.1	448.5
ARUBA	-406.1	7.8
AUSTRIA	-407.4	838.0
UNITED ARAB EMIRATES	-445.4	867.8
GUERNSEY	-540.0	5.0
CAIMAN ISLANDS	-584.1	401.3

MALAYSIA	-772.6	35.4
BERMUDA	-860.8	15.4
SWITZERLAND	-1,020.2	2,090.9
JAPAN	-1,060.1	5,188.0
RUSSIA	-1,335.7	6,863.2
British Virgin Islands	-2,360.9	2,863.1
Hong Kong	-4,303.5	899.8
International organizations	-5,922.6	3,687.8
France	-8,315.9	4,520.5
United Kingdom	-10,186.0	15,612.5
China	-11,912.2	3,190.9
Netherlands	-46,280.0	17,023.5

¹ Net means assets minus liabilities

² according to the asset/liability principle

³ debt securities, issued according to the laws of other countries and on their territory, are presented by the

⁴ Not determined by country:

- in assets and liabilities: financial derivatives;

- in liabilities: syndicate of foreign banks, from which attracted government loans (Ministry of Finance of

- in reserve assets: monetary gold.

Assets					total (9+10+11+12)
including:					
direct investment ²	portfolio investment	financial derivatives	other investment	reserve assets	
29,140	64,908	71	34,702	27,876	198,453
708.2	34,394.8	1.6	3,740.5	13,655.0	23,735.4
0.0	0.0	69.1	1,019.9	7,604.6	1,022.7
106.1	3,316.1	0.0	886.2	681.1	968.0
139.1	0.0	0.0	2,702.3	0.0	195.2
2.1	2,229.7	0.0	12.9	165.1	33.6
72.0	2,381.8	0.0	305.8	279.3	1,140.3
7.8	1,374.0	0.0	4.7	156.0	59.2
843.5	270.4	0.0	1,012.2	15.7	858.4
326.9	0.2	0.0	1,445.5	0.0	551.8
0.3	2,297.3	0.0	409.8	241.9	1,894.0
288.6	0.0	0.0	467.1	0.0	107.2
954.5	72.0	0.0	418.5	4.9	848.0
0.2	420.8	0.0	16.4	111.3	57.4
266.7	75.5	0.0	832.3	114.4	832.6
0.0	364.9	0.0	1.3	95.1	12.6
9.8	99.6	0.0	346.6	350.4	449.7
4.2	139.4	0.0	23.7	47.4	34.3
40.3	100.0	0.0	0.0	0.0	-16.3
31.0	111.7	0.0	18.3	0.0	7.6
134.5	0.9	0.0	102.5	0.0	86.0
0.0	0.1	0.0	3.3	124.5	0.5
0.0	0.0	0.0	125.3	0.0	0.1
0.0	0.4	0.0	0.1	126.3	2.2
0.9	51.8	0.0	22.1	109.0	69.9
0.0	2.1	0.0	0.5	106.1	0.6
0.0	0.0	0.0	0.0	101.6	0.1
0.0	0.0	0.0	7.9	80.7	0.2
0.2	58.4	0.0	87.2	20.9	82.0
0.1	0.4	0.0	3.2	89.1	13.0
44.5	0.0	0.0	73.2	0.0	37.9
71.9	0.0	0.0	84.6	0.0	81.5
0.0	3.4	0.0	0.2	82.5	27.7
0.0	41.3	0.0	0.0	0.0	0.0
0.0	1.5	0.0	0.1	36.1	0.0
0.0	12.4	0.0	30.3	0.0	6.0
0.0	26.6	0.0	0.6	5.0	2.4
0.0	0.0	0.0	26.4	0.0	2.1
0.0	0.8	0.0	0.0	24.2	0.9
0.0	0.0	0.0	10.1	16.3	2.5
0.0	0.6	0.0	21.1	0.0	4.1
0.0	0.0	0.0	0.5	16.9	3.0
3.0	0.0	0.0	12.8	0.0	5.1
0.0	0.0	0.0	0.0	6.6	0.0
0.2	0.0	0.0	5.5	0.0	0.0
0.2	0.0	0.0	8.0	0.0	2.6
88.1	0.0	0.0	5.3	0.0	88.3
2.7	0.2	0.0	7.0	0.0	6.7
0.0	0.0	0.0	2.6	0.0	0.2

0.0	0.0	0.0	0.0	0.0	0.0	0.2
0.0	0.0	0.0	0.0	0.1	0.0	0.3
0.0	0.0	0.0	0.0	0.2	0.0	0.4
0.0	0.0	0.0	0.0	0.2	0.0	0.5
0.0	0.0	0.0	0.0	0.0	0.0	0.3
0.0	0.0	0.0	0.0	0.0	0.0	0.6
0.0	0.0	0.0	0.0	0.1	0.0	0.9
0.0	0.0	0.0	0.0	0.3	0.0	1.6
0.0	0.0	0.0	0.0	1.4	0.0	2.8
0.0	0.0	0.0	0.0	13.7	0.0	16.1
0.0	0.2	0.0	0.0	0.5	0.0	3.2
0.0	0.0	0.0	0.0	0.5	0.0	3.6
64.9	0.0	0.0	0.0	159.5	0.0	227.9
0.0	0.0	0.0	0.0	0.0	0.0	4.6
0.7	0.0	0.0	0.0	6.0	0.0	12.2
0.0	0.0	0.0	0.0	0.0	0.0	6.4
0.0	0.0	0.0	0.0	0.0	0.0	6.7
0.0	0.0	0.0	0.0	4.1	0.0	11.6
0.0	0.0	0.0	0.0	0.0	0.0	9.2
0.0	0.0	0.0	0.0	0.0	0.0	10.2
0.0	0.0	0.0	0.0	0.0	0.0	10.5
0.0	0.0	0.0	0.0	17.1	0.0	28.2
3.3	0.0	0.0	0.0	19.4	67.9	102.1
4.8	0.0	0.0	0.0	3.6	0.0	20.4
0.2	0.0	0.0	0.0	2.1	0.0	16.0
0.0	0.0	0.0	0.0	0.0	0.0	13.9
0.0	0.0	0.0	0.0	1.3	0.0	17.7
9.3	0.0	0.0	0.0	15.3	0.0	41.5
0.0	0.0	0.0	0.0	0.2	0.0	17.7
4.8	0.0	0.0	0.0	0.1	0.0	23.4
0.0	0.0	0.0	0.0	0.8	0.0	19.4
0.0	0.0	0.0	0.0	0.0	0.0	22.4
1.1	0.0	0.0	0.0	34.6	0.0	58.6
0.0	0.0	0.0	0.0	8.6	17.9	56.8
0.1	0.0	0.0	0.0	4.0	0.0	35.6
5.6	12.6	0.0	0.0	28.1	0.0	78.6
2.6	15.2	0.0	0.0	13.8	0.0	68.7
0.6	0.0	0.0	0.0	1.6	0.0	50.1
0.0	1.9	0.0	0.0	59.9	0.0	112.7
10.8	0.0	0.0	0.0	8.6	4.8	77.8
7.3	0.4	0.0	0.0	35.9	0.0	105.9
11.6	95.6	0.0	0.0	116.3	20.8	312.7
0.0	0.0	0.0	0.0	2.2	0.0	74.4
14.7	0.0	0.0	0.0	3.3	0.0	94.1
10.7	0.0	0.0	0.0	82.8	0.0	176.5
0.0	0.0	0.0	0.0	7.6	0.0	93.7
0.0	0.0	0.0	0.0	2.0	0.0	91.2
0.0	0.0	0.0	0.0	0.5	0.0	103.4
0.0	0.0	0.0	0.0	0.1	0.0	228.6
2.9	0.0	0.0	0.0	19.4	0.0	264.5
0.0	0.0	0.0	0.0	187.1	0.0	436.0
13.0	0.2	0.0	0.0	22.4	0.0	291.0
0.0	324.6	0.0	0.0	19.7	104.1	845.7
0.0	0.0	0.0	0.0	7.8	0.0	413.9
0.5	497.9	0.0	0.0	83.0	256.6	1,245.4
373.0	0.2	0.0	0.0	485.0	9.6	1,313.2
5.0	0.0	0.0	0.0	0.0	0.0	545.0
365.1	19.4	0.0	0.0	3.7	13.1	985.4

0.0	4.1	0.0	6.1	25.2	808.0
0.0	13.5	0.0	0.1	1.8	876.2
906.7	496.7	0.0	662.1	25.5	3,111.2
0.0	4,375.0	0.0	252.1	560.9	6,248.1
807.8	170.9	0.0	5,871.4	13.2	8,199.0
419.5	10.2	0.0	2,431.6	1.8	5,224.1
31.3	86.0	0.0	777.4	5.1	5,203.4
0.0	1,716.2	0.0	1,355.9	615.6	9,610.4
57.3	3,748.6	0.0	166.1	548.4	12,836.4
7,039.6	3,885.0	0.1	3,900.1	787.7	25,798.5
180.7	16.3	0.0	2,994.0	0.0	15,103.1
14,637.0	1,567.1	0.0	492.0	327.4	63,303.5

æ country of trustee-nonresidents

ƒ Kazakhstan); non-residents' deposits and accounts in Kazakhstan banks (excl. Russian Federation);

mln USD

Liabilities			
including:			
direct investment ²	portfolio investment ³	financial derivatives	other investment
125,122	20,138	210	52,983
21,002.2	1,964.1	0.0	769.0
0.0	0.0	194.7	828.0
384.6	0.1	14.7	568.6
6.8	0.0	0.0	188.4
16.1	0.0	0.0	17.5
778.4	0.0	0.0	362.0
19.7	0.0	0.0	39.5
648.7	90.2	0.0	119.6
246.6	1.9	0.0	303.4
1,513.8	5.4	0.0	374.8
14.4	0.0	0.0	92.8
433.9	0.4	0.0	413.7
39.3	0.0	0.0	18.0
457.2	0.3	0.0	375.2
4.3	0.0	0.0	8.3
312.1	2.6	0.0	135.0
9.4	0.0	0.0	24.9
-68.3	0.0	0.0	52.0
7.6	0.0	0.0	0.0
74.6	0.0	0.0	11.4
0.0	0.0	0.0	0.5
0.0	0.0	0.0	0.1
0.0	0.0	0.0	2.1
11.0	0.0	0.0	58.8
0.0	0.0	0.0	0.6
0.0	0.0	0.0	0.1
0.0	0.0	0.0	0.2
44.2	0.0	0.0	37.8
0.0	0.0	0.0	13.0
1.7	0.0	0.0	36.3
4.6	0.0	0.0	76.9
25.7	0.0	0.0	2.0
0.0	0.0	0.0	0.0
0.0	0.0	0.0	0.0
0.0	0.0	0.0	6.0
0.0	0.0	0.0	2.4
0.0	0.0	0.0	2.1
0.0	0.0	0.0	0.9
0.2	0.0	0.0	2.4
3.5	0.0	0.0	0.6
0.0	0.0	0.0	3.0
1.0	0.0	0.0	4.1
0.0	0.0	0.0	0.0
0.0	0.0	0.0	0.0
0.0	0.0	0.0	2.6
-4.2	0.0	0.0	92.5
0.1	0.0	0.0	6.6
0.0	0.0	0.0	0.2

0.0	0.0	0.0	0.2
0.0	0.0	0.0	0.3
0.4	0.0	0.0	0.0
0.1	0.0	0.0	0.4
0.3	0.0	0.0	0.0
0.6	0.0	0.0	0.0
0.2	0.0	0.0	0.7
0.0	0.0	0.0	1.6
0.0	0.0	0.0	2.8
0.0	0.0	0.0	16.1
0.0	0.0	0.0	3.2
0.1	0.0	0.0	3.5
6.9	0.0	0.0	221.0
0.0	0.0	0.0	4.6
0.0	0.0	0.0	12.2
5.9	0.0	0.0	0.5
0.7	0.0	0.0	6.0
3.3	0.0	0.0	8.4
7.3	0.0	1.0	0.9
0.0	0.0	0.0	10.2
0.1	0.0	0.0	10.4
0.0	0.0	0.0	28.2
5.2	0.0	0.0	97.0
0.0	0.0	0.0	20.4
7.1	0.0	0.0	8.9
7.2	0.0	0.0	6.7
15.5	0.0	0.0	2.2
7.8	0.0	0.0	33.7
0.0	0.0	0.0	17.7
12.5	0.0	0.0	10.9
6.2	0.0	0.0	13.2
15.1	0.0	0.0	7.4
16.0	0.1	0.0	42.5
30.6	0.0	0.0	26.2
12.9	0.0	0.0	22.7
22.7	0.0	0.0	55.9
8.8	0.0	0.0	59.9
5.2	0.0	0.0	44.9
38.9	0.0	0.0	73.8
48.1	0.0	0.0	29.7
19.5	0.0	0.0	86.3
110.4	0.0	0.0	202.3
1.4	0.0	0.0	73.0
39.2	0.0	0.0	55.0
21.1	0.0	0.0	155.3
20.6	0.0	0.0	73.1
47.2	0.0	0.0	44.0
79.2	0.3	0.0	23.9
181.4	0.0	0.0	47.2
253.0	0.0	0.0	11.5
432.5	0.0	0.0	3.4
148.5	0.0	0.0	142.5
577.1	0.0	0.0	268.5
1.0	0.0	0.0	412.9
1,017.7	0.9	0.0	226.8
784.1	0.0	0.0	529.1
545.0	0.0	0.0	0.0
16.2	5.3	0.0	963.9

61.1	35.5	0.0	711.4
869.9	0.3	0.0	5.9
2,177.7	2.3	0.0	931.2
5,351.8	0.4	0.0	895.8
3,269.8	19.5	0.0	4,909.6
2,655.4	2.7	0.0	2,566.0
775.9	0.4	0.0	4,427.1
81.1	30.7	0.0	9,498.7
12,134.5	0.0	0.0	701.9
3,226.6	17,941.4	0.0	4,630.5
2,847.5	2.9	0.0	12,252.7
61,100.7	30.3	0.0	2,172.6

IPP of government sector

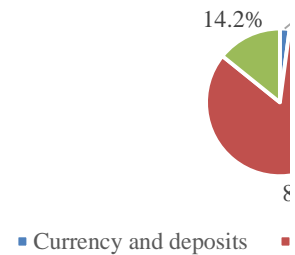
NFK assets 2015

Currency and deposits	2.1%
Debt securities	83.6%
Equity	14.2%
Other	0.0%

NBK reserve assets 2015

Monetary gold	27.2%
Currency and deposits	37.6%
SDRs	1.8%
Debt securities	33.4%

Composition assets o



IPP by fin instruments

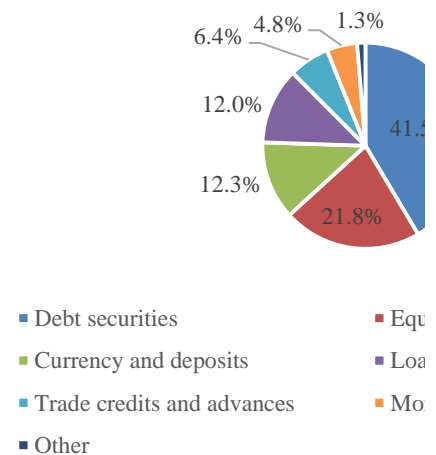
External assets 2015

Debt securities	41.5%
Equity and investment fund shares	21.8%
Currency and deposits	12.3%
Loans	12.0%
Trade credits and advances	6.4%
Monetary gold	4.8%
Other	1.3%

External liabilities 2015

Debt securities	9.4%
Equity and investment fund shares	22.6%
Loans	61.5%
Trade credits and advances	5.1%
Other	1.4%

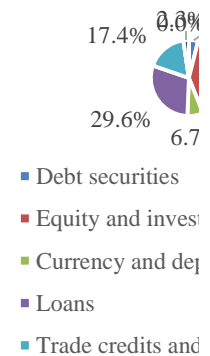
Structure of exter



IPP of other sectors

	External assets 2015	External liabilities 2015
Debt securities	3.9%	5.4%
Equity and investment fund shares	40.0%	24.5%
Currency and deposits	6.7%	0.0%
Loans	29.6%	44.6%
Trade credits and advances	17.4%	5.8%
Financial derivatives	0.0%	0.0%
Other accounts payable	2.3%	19.6%

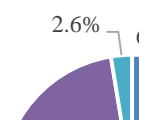
Structure of ex



IPP of Banks sector

	External assets 2015	External liabilities 2015
Debt securities	6.2%	41.4%
Equity and investment fund shares	4.4%	15.5%
Currency and deposits	58.1%	7.5%
Loans	28.7%	33.2%

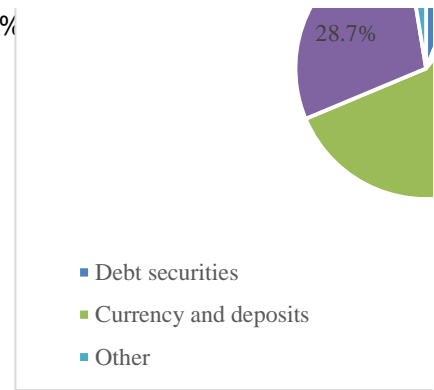
Structure of e



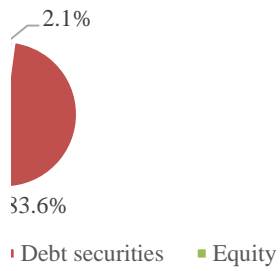
Other

2.6%

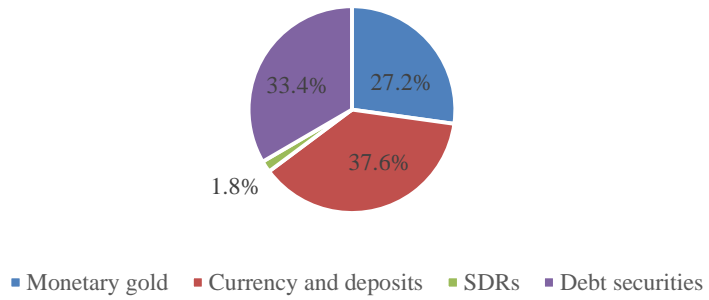
2.4%



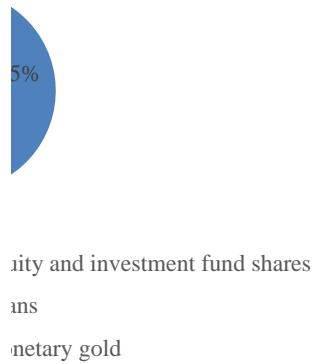
Composition of external assets of NFK



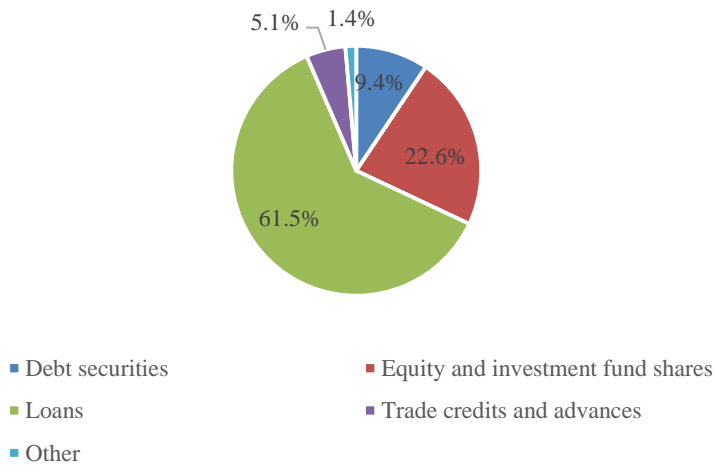
Composition of reserve assets of NBK



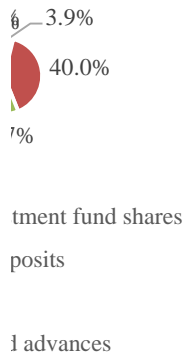
Structure of external assets



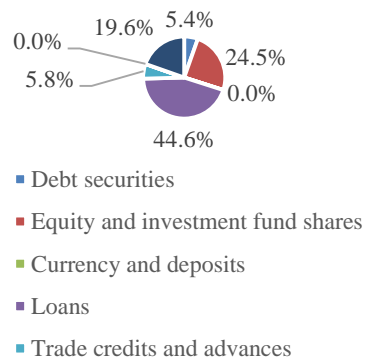
Structure of external liabilities



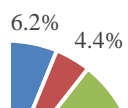
Structure of external assets



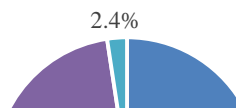
Structure of external liabilities

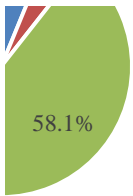


Structure of external assets

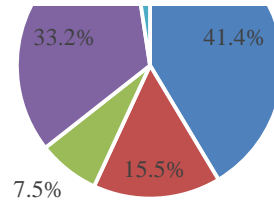


Structure of external liabilities



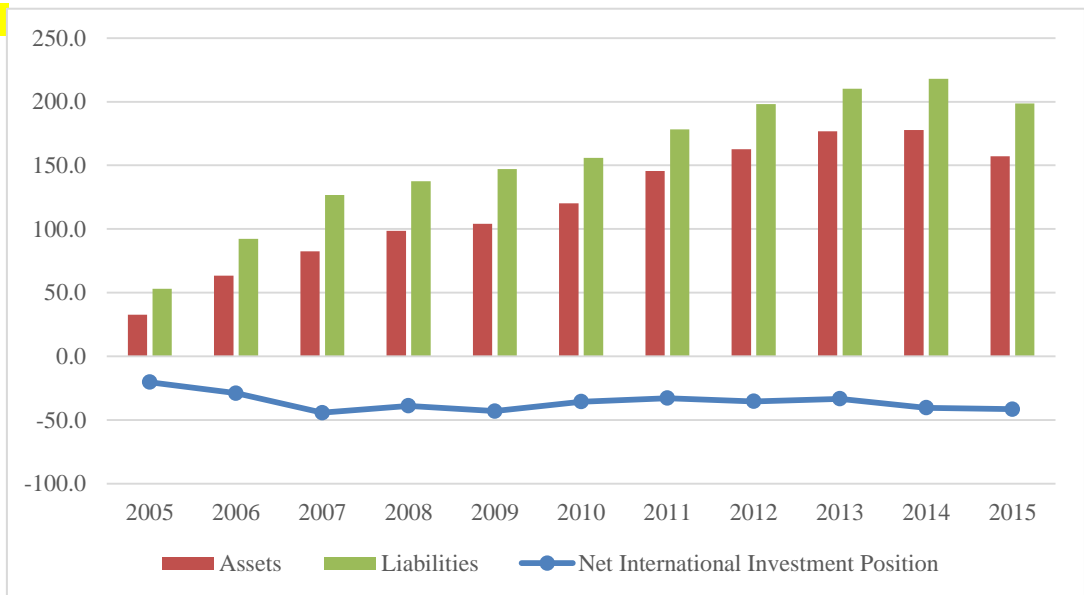


- Equity and investment fund shares
- Loans

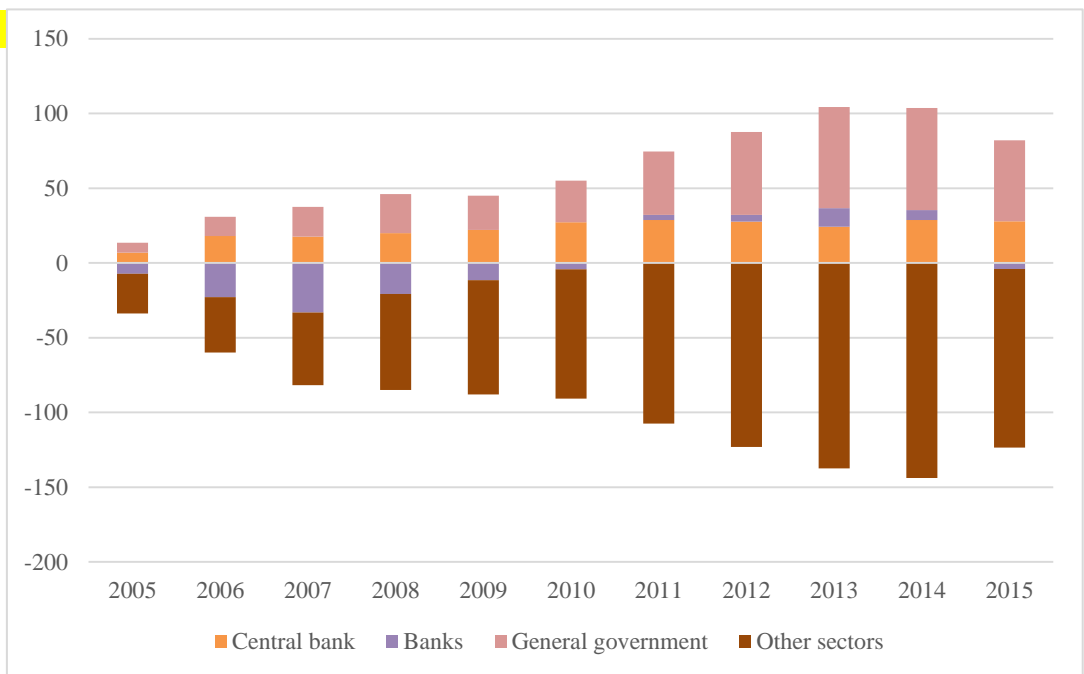


- Debt securities
- Equity and investment fund shares
- Currency and deposits
- Loans
- Other

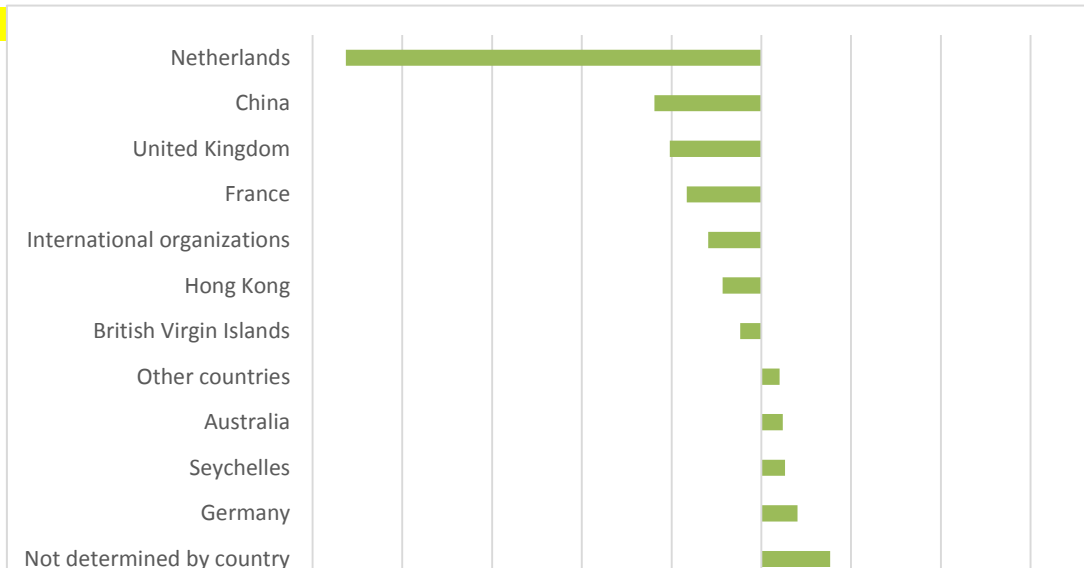
IPP

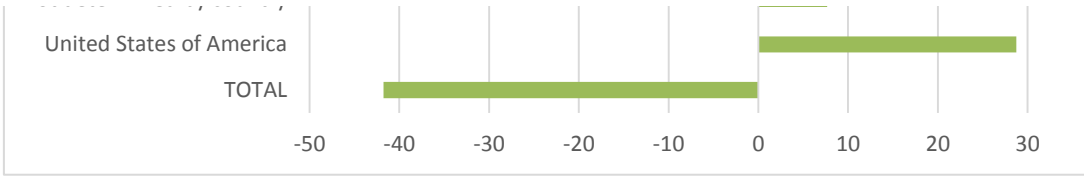


IPP by sectors



IPP by countries





External debt position: standard presentation
mln \$

	2005	2006	2007	2008
External debt	43,428.5	74,014.1	96,893.0	107,933.4
<i>Short-term</i>	8,102.4	12,445.2	11,529.7	9,486.8
<i>Long-term</i>	35,326.1	61,568.9	85,363.3	98,446.6
General Government	1,478.9	1,495.2	1,491.5	1,641.9
<i>Short-term</i>	0.0	0.0	0.0	0.0
Currency and deposits	0.0	0.0	0.0	0.0
Debt securities ¹	0.0	0.0	0.0	0.0
Loans	0.0	0.0	0.0	0.0
Trade credit and advances	0.0	0.0	0.0	0.0
Other debt liabilities	0.0	0.0	0.0	0.0
<i>Long-term</i>	1,478.9	1,495.2	1,491.5	1,641.9
Special Drawing Rights	0.0	0.0	0.0	0.0
Currency and deposits	0.0	0.0	0.0	0.0
Debt securities ¹	52.3	53.1	60.3	23.8
Loans	1,426.6	1,442.1	1,431.2	1,618.1
Trade credit and advances	0.0	0.0	0.0	0.0
Other debt liabilities ²	0.0	0.0	0.0	0.0
Central Bank	103.5	1,076.8	106.9	12.1
<i>Short-term</i>	101.6	1,074.9	105.0	10.2
Currency and deposits	1.0	0.8	0.0	0.3
Debt securities ¹	99.8	1,073.0	104.8	10.0
Loans	0.0	0.0	0.0	0.0
Trade credit and advances	0.0	0.0	0.0	0.0
Other debt liabilities	0.9	1.2	0.2	0.0
<i>Long-term</i>	1.9	1.9	1.9	1.9
Special Drawing Rights	0.0	0.0	0.0	0.0
Currency and deposits	0.0	0.0	0.0	0.0
Debt securities ¹	0.0	0.0	0.0	0.0
Loans	0.0	0.0	0.0	0.0
Trade credit and advances	0.0	0.0	0.0	0.0
Other debt liabilities ²	1.9	1.9	1.9	1.9
Banks	15,316.3	33,323.4	45,946.2	39,221.2
<i>Short-term</i>	6,297.2	7,465.5	6,102.8	3,093.4
Currency and deposits	804.2	1,297.9	1,863.9	702.7
Debt securities ¹	0.0	0.0	0.0	0.0
Loans	5,318.2	5,801.4	3,747.5	2,010.9
Trade credit and advances	0.0	0.0	0.0	0.0
Other debt liabilities	174.8	366.2	491.4	379.7
<i>Long-term</i>	9,019.1	25,857.9	39,843.4	36,127.8
Currency and deposits	308.3	487.3	701.4	527.6
Debt securities ¹	1,824.8	2,984.1	3,266.2	2,518.3
Loans	6,885.9	22,386.5	35,875.9	33,082.0
Trade credit and advances	0.0	0.0	0.0	0.0
Other debt liabilities ²	0.0	0.0	0.0	0.0
Other Sectors	7,307.8	12,605.7	19,267.8	26,859.4
<i>Short-term</i>	1,703.6	3,904.8	5,321.9	6,383.2
Currency and deposits	0.0	0.0	0.0	0.0
Debt securities ¹	4.2	1.6	0.3	0.1

Loans	369.2	1,162.7	1,437.3	2,247.2
Trade credit and advances	1,259.4	2,684.0	3,704.2	4,001.8
Other debt liabilities	70.9	56.6	180.1	134.1
<i>Long-term</i>	<i>5,604.2</i>	<i>8,700.9</i>	<i>13,945.9</i>	<i>20,476.2</i>
Currency and deposits	0.0	0.0	0.0	0.0
Debt securities ¹	146.8	87.8	669.5	602.1
Loans	4,393.7	7,380.7	11,589.8	18,062.4
Trade credit and advances	1,063.6	1,232.3	1,686.5	1,811.7
Other debt liabilities ²	0.0	0.0	0.0	0.0
Other financial corporations	239.4	1,049.0	2,762.2	2,057.0
<i>Short-term</i>	83.3	59.9	165.9	36.0
<i>Long-term</i>	156.0	989.1	2,596.4	2,020.9
Nonfinancial corporations, households, and NPISHs	7,068.5	11,556.7	16,505.6	24,802.5
<i>Short-term</i>	1,620.3	3,844.9	5,156.1	6,347.2
<i>Long-term</i>	5,448.2	7,711.8	11,349.5	18,455.3
Direct investment: Intercompany lending	19,222.0	25,513.0	30,080.6	40,198.8
Debt liabilities of direct investment enterprises to direct investors	17,175.0	22,229.5	27,621.9	34,861.1
Debt liabilities of direct investors to direct investment enterprises (reverse investment)	2,047.0	3,283.5	2,458.8	5,337.6
Debt liabilities between fellow enterprises				
Memorandum Items				
Debt securities (nominal value)		3,569.0	3,389.3	2,871.4
General Government		52.8	60.3	23.8
Central Bank		1,073.0	104.8	10.0
Banks		2,357.9	2,561.6	2,219.7
Other Sectors ³		85.3	662.7	618.0

¹ Debt securities are recorded at market value (at its existence)

² Including insurance and pension programs, standardized guarantees as well as other long-term liabilities listed

³ The article "Other sectors" does not include intercompany lending which is presented as an independent component

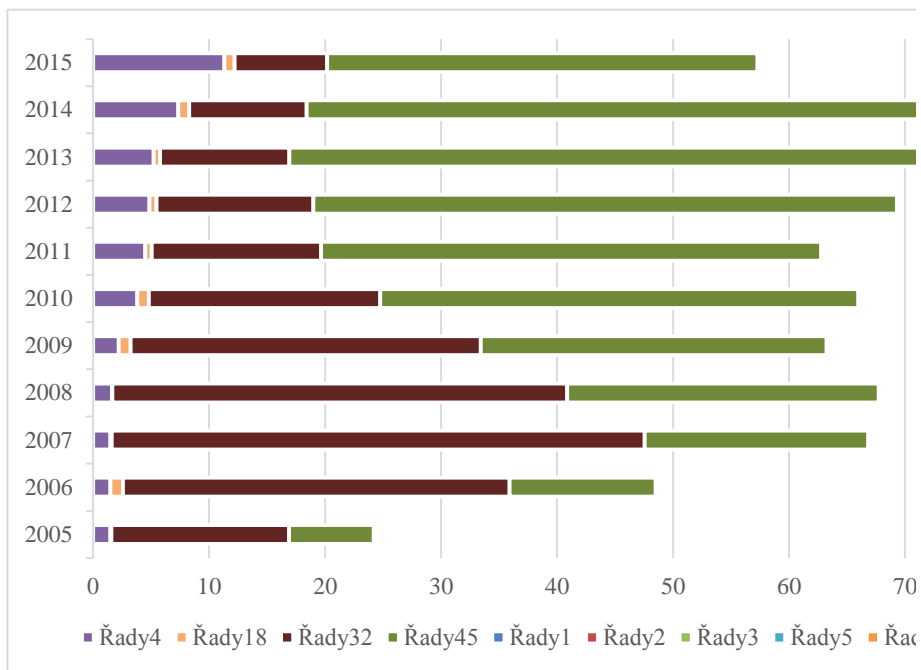
2009	2010	2011	2012	2013	2014	2015
112,866.9	118,222.8	125,320.8	136,918.2	150,032.9	157,561.5	153,384.8
6,985.1	8,864.5	7,867.2	9,086.3	9,468.1	9,713.8	6,478.4
105,881.8	109,358.3	117,453.6	127,831.9	140,564.8	147,847.7	146,906.4
2,218.1	3,800.3	4,487.4	4,855.1	5,217.6	7,332.5	11,309.3
0.0	0.0	7.9	0.1	0.0	0.0	17.8
0.0	0.0	0.0	0.0	0.0	0.0	0.0
0.0	0.0	7.8	0.0	0.0	0.0	0.0
0.0	0.0	0.0	0.0	0.0	0.0	0.0
0.0	0.0	0.1	0.1	0.0	0.0	17.8
0.0	0.0	0.0	0.0	0.0	0.0	0.0
2,218.1	3,800.3	4,479.5	4,855.0	5,217.6	7,332.5	11,291.5
0.0	0.0	0.0	0.0	0.0	0.0	0.0
0.0	0.0	0.0	0.0	0.0	0.0	0.0
0.0	49.1	23.8	14.1	14.7	1,887.6	5,038.0
2,218.1	3,751.2	4,455.7	4,840.9	5,101.0	5,369.7	6,214.5
0.0	0.0	0.0	0.0	0.0	0.0	0.0
0.0	0.0	0.0	0.0	101.9	75.2	39.0
1,017.5	1,000.6	563.3	618.9	546.7	953.7	898.8
479.7	470.4	36.3	88.1	10.7	215.6	76.0
103.6	239.5	16.5	88.1	6.7	209.3	70.9
376.1	230.9	19.8	0.0	0.0	0.0	0.0
0.0	0.0	0.0	0.0	0.0	0.0	0.0
0.0	0.0	0.0	0.0	0.0	0.0	0.0
0.0	0.0	0.0	0.0	4.0	6.3	5.0
537.8	530.2	526.9	530.8	536.0	738.1	822.9
536.8	529.2	525.9	529.8	535.0	503.2	481.8
0.0	0.0	0.0	0.0	0.0	233.9	340.0
0.0	0.0	0.0	0.0	0.0	0.0	0.0
0.0	0.0	0.0	0.0	0.0	0.0	0.0
0.0	0.0	0.0	0.0	0.0	0.0	0.0
1.0	1.0	1.0	1.0	1.0	1.0	1.0
30,190.1	19,947.9	14,604.8	13,524.9	11,160.4	10,119.5	7,972.8
1,646.2	1,622.5	1,046.6	1,647.6	1,227.6	1,467.6	764.4
837.6	1,275.4	772.1	1,203.3	829.5	988.0	575.1
0.0	0.0	0.0	0.0	0.0	0.0	0.0
353.1	227.7	130.8	360.9	316.6	351.8	149.1
0.0	0.0	0.0	0.0	0.0	0.0	0.0
455.5	119.4	143.7	83.3	81.5	127.8	40.2
28,543.9	18,325.3	13,558.1	11,877.3	9,932.8	8,651.9	7,208.4
289.7	275.1	262.2	428.5	944.6	816.0	149.4
2,905.5	10,695.5	7,916.3	6,639.8	5,739.7	4,704.1	3,999.9
25,348.8	7,354.7	5,379.6	4,809.0	3,248.5	3,131.9	3,059.1
0.0	0.0	0.0	0.0	0.0	0.0	0.0
0.0	0.0	0.0	0.0	0.0	0.0	0.0
29,809.2	41,199.2	43,089.1	50,311.0	58,928.7	59,574.0	37,071.7
4,859.2	6,771.5	6,776.4	7,350.6	8,229.8	8,030.6	5,620.3
0.0	0.0	0.0	0.0	0.0	0.0	0.0
0.1	0.0	0.0	0.0	0.0	0.0	0.0

918.4	1,287.7	1,175.8	869.3	901.0	1,114.4	457.9
3,788.3	5,305.6	5,455.1	6,307.9	7,218.6	6,810.1	5,059.5
152.4	178.2	145.5	173.4	110.2	106.2	102.9
24,950.0	34,427.7	36,312.8	42,960.5	50,698.9	51,543.4	31,451.4
0.0	0.0	0.0	0.0	0.0	0.0	0.0
800.2	9,053.4	10,254.4	11,130.1	12,975.6	15,912.8	9,617.8
22,586.2	23,658.2	24,336.1	29,883.4	35,615.7	33,284.9	19,216.5
1,563.6	1,716.0	1,722.2	1,947.1	2,019.2	2,159.5	2,348.2
0.0	0.0	0.0	0.0	88.5	186.2	268.9
1,970.9	1,910.5	2,133.9	1,982.2	2,897.2	3,461.8	2,593.0
53.6	107.0	100.7	90.6	115.6	68.1	57.3
1,917.3	1,803.4	2,033.2	1,891.5	2,781.6	3,393.7	2,535.7
27,838.3	39,288.7	40,955.2	48,328.9	56,031.5	56,112.2	34,478.7
4,805.7	6,664.5	6,675.7	7,259.9	8,114.2	7,962.6	5,563.0
23,032.6	32,624.2	34,279.6	41,068.9	47,917.2	48,149.7	28,915.7
49,632.0	52,274.7	62,576.2	67,608.3	74,179.5	79,581.8	96,132.2
42,988.4	49,721.8	59,589.4	63,632.6	69,896.5	72,667.2	76,338.1
6,643.6	2,553.0	2,597.8	3,429.2	3,392.2	1,536.4	932.7
		389.0	546.5	890.7	5,378.2	18,861.4
3,785.7	19,199.8	19,248.0	16,297.7	18,596.0	23,524.1	19,839.8
0.0	49.1	31.6	14.1	14.7	2,003.4	5,248.8
376.1	230.9	19.8	0.0	0.0	0.0	0.0
2,593.4	10,685.5	10,419.2	6,985.4	6,309.7	5,219.9	4,768.7
816.1	8,234.3	8,777.3	9,298.2	12,271.6	16,300.8	9,822.3

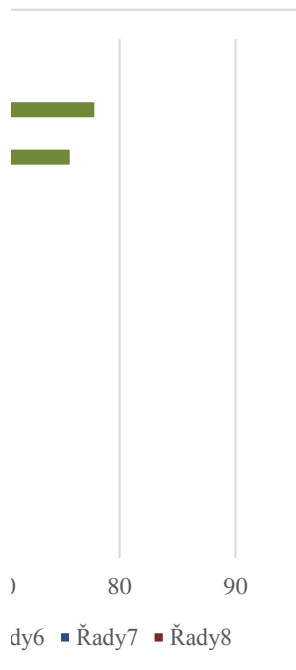
ed in the structure of IIP

ponent in the External Debt structure

Row's code
1=2+3=
4+18+32+45+64
2=5+19+33+46
3=11+25+39+53+64
4=5+11
5=6+7+8+9+10
6
7
8
9
10
11=12+13+14+15+16+17
12
13
14
15
16
17
18=19+25
19=20+21+22+23+24
20
21
22
23
24
25=26+27+28+29+30+31
26
27
28
29
30
31
32=33+39
33=34+35+36+37+38
34
35
36
37
38
39=40+41+42+43+44
40
41
42
43
44
45=46+52=58+61
46=47+48+49+50+51=
59+62
47
48



49
50
51
$52=53+54+55+56+57=$ $60+63$
53
54
55
56
57
$58=59+60$
59
60
$61=62+63$
62
63
$64=65+66+64$
65
66
67
$68=69+70+71+72$
69
70
71
72



	2005	2006	2007	2008	2009	2010	2011	2012
External debt	43,428.5	74,014.1	96,893.0	107,933.4	112,866.9	118,222.8	125,320.8	136,918.2
<i>Short-term</i>	8,102.4	12,445.2	11,529.7	9,486.8	6,985.1	8,864.5	7,867.2	9,086.3
<i>Long-term</i>	35,326.1	61,568.9	85,363.3	98,446.6	105,881.8	109,358.3	117,453.6	127,831.9
General Government	1,478.9	1,495.2	1,491.5	1,641.9	2,218.1	3,800.3	4,487.4	4,855.1
<i>Short-term</i>	0.0	0.0	0.0	0.0	0.0	0.0	7.9	0.1
<i>Long-term</i>	1,478.9	1,495.2	1,491.5	1,641.9	2,218.1	3,800.3	4,479.5	4,855.0
Central Bank	103.5	1,076.8	106.9	12.1	1,017.5	1,000.6	563.3	618.9
<i>Short-term</i>	101.6	1,074.9	105.0	10.2	479.7	470.4	36.3	88.1
<i>Long-term</i>	1.9	1.9	1.9	1.9	537.8	530.2	526.9	530.8
Banks	15,316.3	33,323.4	45,946.2	39,221.2	30,190.1	19,947.9	14,604.8	13,524.9
<i>Short-term</i>	6,297.2	7,465.5	6,102.8	3,093.4	1,646.2	1,622.5	1,046.6	1,647.6
<i>Long-term</i>	9,019.1	25,857.9	39,843.4	36,127.8	28,543.9	18,325.3	13,558.1	11,877.3
Other Sectors	7,307.8	12,605.7	19,267.8	26,859.4	29,809.2	41,199.2	43,089.1	50,311.0
<i>Short-term</i>	1,703.6	3,904.8	5,321.9	6,383.2	4,859.2	6,771.5	6,776.4	7,350.6
<i>Long-term</i>	5,604.2	8,700.9	13,945.9	20,476.2	24,950.0	34,427.7	36,312.8	42,960.5

2013	2014	2015
150,032.9	157,561.5	153,384.8
9,468.1	9,713.8	6,478.4
140,564.8	147,847.7	146,906.4
5,217.6	7,332.5	11,309.3
<i>0.0</i>	<i>0.0</i>	<i>17.8</i>
<i>5,217.6</i>	<i>7,332.5</i>	<i>11,291.5</i>
546.7	953.7	898.8
<i>10.7</i>	<i>215.6</i>	<i>76.0</i>
<i>536.0</i>	<i>738.1</i>	<i>822.9</i>
11,160.4	10,119.5	7,972.8
<i>1,227.6</i>	<i>1,467.6</i>	<i>764.4</i>
9,932.8	8,651.9	7,208.4
58,928.7	59,574.0	37,071.7
8,229.8	8,030.6	5,620.3
50,698.9	51,543.4	31,451.4

External debt by countries*

		General Government	Central Bank
TOTAL	153,456	11,292	900
Netherlands	43,321.4	3.4	0.0
United Kingdom	24,964.2	5,036.9	1.4
China	13,248.4	0.0	68.1
Unites States of America	12,484.8	0.0	1.1
France	11,285.3	0.0	0.0
International Organizations	9,526.1	5,456.2	822.3
Russia	6,939.7	1.1	2.1
Japan	5,626.4	530.1	1.8
Hong Kong	5,197.3	0.0	0.0
British Virgin Islands	4,112.7	0.0	0.0
Other countries	15,922.0		
Not determined by country	828.0	200.0	0.7
SOUTH KOREA	1,500.6	0.0	0.0
SWITZERLAND	1,346.8	0.0	1.3
CAIMAN ISLANDS	975.0	0.0	0.0
GERMANY	833.0	12.6	0.2
MALAYSIA	807.9	0.0	0.0
SWEDEN	774.8	0.0	0.0
BERMUDA	754.9	0.0	0.0
LUXEMBURG	722.3	0.0	0.0
CANADA	653.1	0.0	0.0
UNITED ARAB EMIRATES	595.6	6.5	0.0
TURKEY	570.9	35.6	0.0
SINGAPORE	552.7	0.0	0.0
GUERNSEY	465.0	0.0	0.0
ROMANIA	436.0	0.0	0.0
ARUBA	412.9	0.0	0.0
CYPRUS	326.7	0.0	0.0
BELGIUM	284.8	0.0	0.0
ITALY	282.1	0.0	0.0
AUSTRIA	261.7	0.0	0.0
ST KITT & NEVIS	243.0	0.0	0.0
UZBEKISTAN	222.9	0.0	0.0
SEYCHELLES	188.4	0.0	0.0
LIECHTENSTEIN	182.1	0.0	0.0
UKRAINE	156.2	0.0	0.0
INDIA	149.0	0.0	0.0
POLAND	133.1	0.0	0.0
PANAMA	107.5	0.0	0.0
KYRGYZSTAN	106.1	0.0	0.0
BELARUS	104.6	0.0	0.3
SAUDA ARABIA	103.1	2.2	0.0
LITHUANIA	97.9	0.0	0.0
ISLE OF MAN	94.1	0.0	0.0
BELIZE	93.7	0.0	0.0
MARSHALL ISLANDS	92.5	0.0	0.0
LATVIA	81.9	0.0	0.0
SPAIN	80.9	0.0	0.3
SLOVAKIA	73.5	0.0	0.0
AZERBAIJAN	70.3	0.0	0.0
ISRAEL	64.6	0.0	0.0
CZECH REPUBLIC	63.5	0.0	0.0

BAHAMAS	57.9	0.0	0.0
ESTONIA	57.2	0.0	0.0
HUNGARY	53.0	0.0	0.0
FINLAND	50.8	0.0	0.0
SLOVENIA	50.0	0.0	0.0
LEBANON	44.7	0.0	0.0
IRELAND	42.7	0.0	0.0
IRAN	40.8	0.0	0.0
TADJIKISTAN	37.6	0.0	0.0
AUSTRALIA	35.9	0.0	0.0
DENMARK	33.9	0.0	0.0
AFGHANISTAN	28.2	0.0	0.0
MOLDOVA	28.0	0.0	0.0
GEORGIA	26.6	0.0	0.0
BAHRAIN	20.4	0.0	0.0
ST VINCENT	19.4	0.0	0.0
DOMINICAN REPUBLIC	17.7	0.0	0.0
DOMINICA	16.1	0.0	0.0
MAURITIUS	14.8	0.0	0.0
REP. OF SOUTH AFRICA	13.0	0.0	0.0
BULGARIA	12.9	0.0	0.0
TURKMENISTAN	12.2	0.0	0.0
GIBRALTAR	11.8	0.0	0.0
MALTA	11.3	0.0	0.0
ANGUILLA	10.5	0.0	0.0
BARBADOS	10.2	0.0	0.0
NORWAY	8.9	0.0	0.0
OMAN	8.2	0.0	0.0
KUWAIT	7.4	7.1	0.0
CHANNEL ISLANDS	6.7	0.0	0.0
MONGOLIA	6.7	0.0	0.0
CURACAO	6.0	0.0	0.0
JORDAN	5.2	0.0	0.0
ARMENIA	5.0	0.0	0.1
URUGUAY	4.6	0.0	0.0
JERSEY	3.9	0.0	0.0
EGYPT	3.6	0.0	0.0
GREECE	3.2	0.0	0.0
CROATIA	3.0	0.0	0.0
TAIWAN	2.8	0.0	0.0
THAILAND	2.6	0.0	0.0
NEW ZEALAND	2.4	0.0	0.0
SERBIA	2.4	0.0	0.0
INDONESIA	2.2	0.0	0.0
PAKISTAN	2.2	0.0	0.0
ALBANIA	2.1	0.0	0.0
QATAR	2.0	0.0	0.0
KENYA	1.6	0.0	0.0
CHILE	0.9	0.0	0.0
ICELAND	0.7	0.0	0.0
BRAZIL	0.6	0.0	0.0
PORTUGAL	0.6	0.0	0.0
MEXICO	0.5	0.0	0.0
VIETNAM	0.5	0.0	0.0
VENEZUELA	0.3	0.0	0.0
ARGENTINA	0.2	0.0	0.0
PHILIPPINES	0.2	0.0	0.0
COSTA RICA	0.2	0.0	0.0

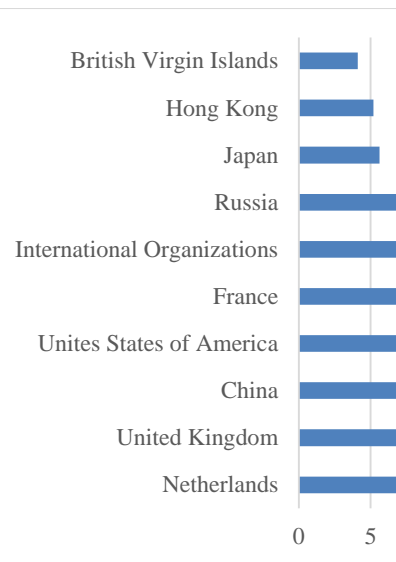
ECUADOR	0.2	0.0	0.0
SRI LANKA	0.2	0.0	0.0
GUATEMALA	0.2	0.0	0.0
CUBA	0.1	0.0	0.0
VIRGIN ISLANDS OF THE US	0.1	0.0	0.0
COLOMBIA	0.1	0.0	0.0
MALDIVES	0.1	0.0	0.0
BANGLADESH	0.1	0.0	0.0
CONGO, THE DEMOCRATIC REPUBLIC OF THE	0.1	0.0	0.0
SYRIA	0.1	0.0	0.0
MONTENEGRO	0.0	0.0	0.0
LIBERIA	0.0	0.0	0.0
TRINIDAD & TOBAGO	0.0	0.0	0.0
IRAQ	0.0	0.0	0.0
MYANMAR (BURMA)	0.0	0.0	0.0
SUDAN	0.0	0.0	0.0
MACAO	0.0	0.0	0.0
MALI	0.0	0.0	0.0
WESTERN SAMOA	0.0	0.0	0.0
JAMAICA	0.0	0.0	0.0
MOROCCO	0.0	0.0	0.0
TUNISIA	0.0	0.0	0.0
MAKEDONIA	0.0	0.0	0.0
CAMBODIA	0.0	0.0	0.0
FIJI	0.0	0.0	0.0
PALESTINIAN TERRITORY, OCCUPIED	0.0	0.0	0.0
NIGERIA	0.0	0.0	0.0
ZIMBABWE	0.0	0.0	0.0
COTE D'IVOIRY	0.0	0.0	0.0
LESOTHO	0.0	0.0	0.0
ALGERIA	0.0	0.0	0.0
ETHIOPIA	0.0	0.0	0.0
GUAM	0.0	0.0	0.0
MONACO	0.0	0.0	0.0
NEPAL	0.0	0.0	0.0
PERU	0.0	0.0	0.0
EL SALVADOR	0.0	0.0	0.0
VATICAN CITI STATE	0.0	0.0	0.0
BOSNIA-HERCEGOVINA	0.0	0.0	0.0
FEDERATED STATES OF MICRONESIA	0.0	0.0	0.0
TUVALU	0.0	0.0	0.0
YEMEN	0.0	0.0	0.0
RWANDA	0.0	0.0	0.0
ANGOLA	0.0	0.0	0.0
CAPE VERDE	0.0	0.0	0.0

* debt securities, issued according to the laws of other countries and on their territory, are presented by the co

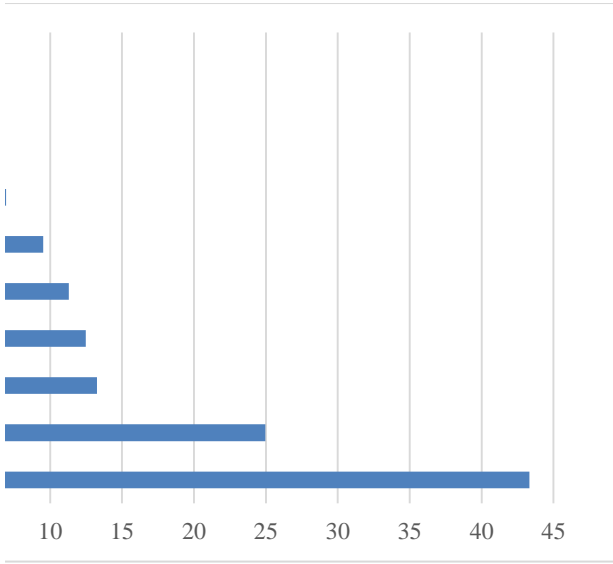
** Not determined by countries:

mln USD

Banks	Other sectors	Direct investments: intercompany lending	
7,973	51,452	81,839	666
39.5	2,126.4	41,152.1	0.0
4,023.9	13,460.9	2,441.1	0.0
2,686.7	9,497.9	995.7	0.0
74.5	1,412.3	10,996.7	0.0
4.8	697.1	10,583.5	0.0
119.0	3,091.8	36.7	638.6
216.0	4,694.5	2,025.9	0.0
14.3	349.6	4,730.5	0.0
0.5	4,426.6	770.2	0.0
0.0	2,566.6	1,546.1	0.0
623.6	3.7	0.0	0.0
0.0	374.3	1,126.2	0.0
19.4	910.5	415.6	0.0
0.0	963.9	11.1	0.0
85.4	470.3	264.5	5.6
35.5	711.4	61.0	0.0
0.0	268.5	506.3	0.0
0.0	5.9	748.9	0.0
0.0	116.6	605.8	0.0
0.0	362.0	291.1	0.0
0.0	522.7	66.5	0.0
0.0	339.4	195.9	0.0
0.0	413.7	139.0	0.0
0.0	0.0	465.0	0.0
0.0	3.4	432.5	0.0
0.0	412.9	0.0	0.0
5.9	297.4	23.4	0.0
0.0	135.1	149.6	0.0
0.2	201.7	80.2	0.0
3.8	223.1	34.9	0.0
0.0	11.5	231.5	0.0
0.0	221.0	1.9	0.0
0.0	188.4	0.0	0.0
0.0	47.2	134.9	0.0
0.0	155.3	0.9	0.0
0.0	142.5	6.5	0.0
0.0	58.8	74.3	0.0
0.0	73.3	34.2	0.0
0.0	92.7	13.3	0.0
0.0	86.0	18.3	0.0
18.1	3.7	79.2	0.0
0.0	96.9	1.0	0.0
0.0	55.0	39.2	0.0
0.0	73.1	20.6	0.0
0.0	92.5	0.0	0.0
0.0	76.9	5.0	0.0
0.0	37.5	43.1	21.5
0.0	73.1	0.4	0.0
0.0	29.7	40.5	0.0
0.0	59.9	4.7	0.0
0.4	55.5	7.5	0.0



0.0	52.0	5.9	0.0
0.0	42.5	14.7	0.0
0.0	26.2	26.8	0.0
0.0	18.0	32.8	0.0
0.0	44.9	5.1	0.0
0.0	44.0	0.7	0.0
0.0	39.5	3.1	0.0
0.0	33.5	7.3	0.0
0.0	36.3	1.4	0.0
0.0	17.5	18.4	0.0
0.2	24.7	9.0	0.0
0.0	28.2	0.0	0.0
0.0	22.6	5.4	0.0
0.0	11.4	15.2	0.0
0.0	20.4	0.0	0.0
0.0	13.2	6.2	0.0
0.0	17.7	0.0	0.0
0.0	16.1	0.0	0.0
0.0	10.9	3.9	0.0
0.0	13.0	0.0	0.0
0.0	8.9	3.9	0.0
0.0	12.2	0.0	0.0
0.0	6.7	5.1	0.0
0.0	8.4	3.0	0.0
0.0	10.4	0.1	0.0
0.0	10.2	0.0	0.0
0.0	8.3	0.6	0.0
0.0	0.9	7.3	0.0
0.0	0.3	0.0	0.0
0.0	6.0	0.7	0.0
0.0	6.6	0.1	0.0
0.0	6.0	0.0	0.0
0.0	0.5	4.7	0.0
0.0	4.1	0.8	0.0
0.0	4.6	0.0	0.0
0.0	0.0	3.9	0.0
0.0	3.5	0.1	0.0
0.0	3.2	0.0	0.0
0.0	3.0	0.0	0.0
0.1	2.7	0.0	0.0
0.0	2.6	0.0	0.0
0.0	2.4	0.0	0.0
0.0	2.4	0.0	0.0
0.0	2.1	0.0	0.0
0.7	1.5	0.0	0.0
0.0	2.1	0.0	0.0
0.0	2.0	0.0	0.0
0.0	1.6	0.0	0.0
0.0	0.9	0.0	0.0
0.0	0.7	0.0	0.0
0.0	0.6	0.0	0.0
0.0	0.6	0.0	0.0
0.0	0.5	0.0	0.0
0.0	0.4	0.1	0.0
0.0	0.3	0.0	0.0
0.0	0.2	0.0	0.0
0.0	0.2	0.0	0.0
0.0	0.2	0.0	0.0

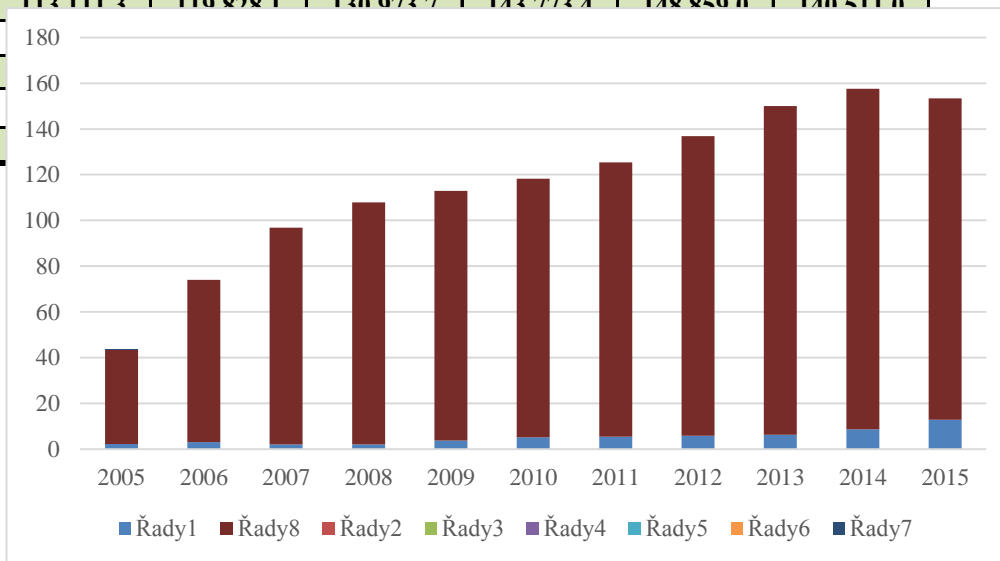


External debt position: analytical presentation

mln \$

	2005	2006	2007	2008
Government and Government guaranteed external debt	2,175.0	3,124.7	2,099.0	2,167.0
<i>% of external debt</i>	<i>5.0%</i>	<i>4.2%</i>	<i>2.2%</i>	<i>2.0%</i>
<i>I.1 Government external debt (I.1.1+I.1.2)</i>	<i>1,582.5</i>	<i>2,572.0</i>	<i>1,598.4</i>	<i>1,654.0</i>
I.1.1 General Government	1,478.9	1,495.2	1,491.5	1,641.9
I.1.2 Central Bank	103.5	1,076.8	106.9	12.1
<i>I.2 Government guaranteed external debt</i>	<i>592.5</i>	<i>552.6</i>	<i>500.6</i>	<i>513.0</i>
Reference:				
Government non-guaranteed external debt	41,253.5	70,889.4	94,794.1	105,766.3
<i>% of external debt</i>	<i>95.0%</i>	<i>95.8%</i>	<i>97.8%</i>	<i>98.0%</i>
External debt (I+II)	43,428.5	74,014.1	96,893.0	107,933.4
<i>inc. intercompany lending</i>	<i>19,222.0</i>	<i>25,513.0</i>	<i>30,080.6</i>	<i>40,198.8</i>
<i>% of external debt</i>	<i>44.3%</i>	<i>34.5%</i>	<i>31.0%</i>	<i>37.2%</i>

2009	2010	2011	2012	2013	2014	2015
3,721.8	5,111.4	5,492.7	5,944.6	6,259.4	8,702.5	12,873.8
<i>3.3%</i>	<i>4.3%</i>	<i>4.4%</i>	<i>4.3%</i>	<i>4.2%</i>	<i>5.5%</i>	<i>8.4%</i>
3,235.6	4,800.9	5,050.7	5,474.0	5,764.3	8,286.2	12,208.1
2,218.1	3,800.3	4,487.4	4,855.1	5,217.6	7,332.5	11,309.3
1,017.5	1,000.6	563.3	618.9	546.7	953.7	898.8
486.2	310.5	442.0	470.6	495.2	416.3	665.7
109,145.1	113,111.3	110,828.1	130,973.7	143,773.4	148,850.0	140,511.0
96.7%						
112,866.9						
49,632.0						
44.0%						



Absolute and comparative indicators of the external debt

Indicator's name	2005
A. Absolute indicators (mln. USD)	
1. External debt (estimate at the end of period)	43,428.5
<i>inc. intercompany lending</i>	19,222.0
2. External debt, excluding intercompany lending (estimate at the end of period)	24,206.6
3. Long-term external debt service (incl. intercompany lending)	13,889.2
4. Long-term external debt service (excl. intercompany lending)	8,420.6
B. Comparative indicators	
1. External debt per capita (in USD excl. intercompany lending)*	1,590.7
2. External debt to GDP ratio (incl. intercompany lending, %)	76.0
3. External debt to GDP ratio (excl. intercompany lending, %)	42.4
4. External debt to EGNFSy ratio (incl. intercompany lending, %)	142.9
5. External debt to EGNFSy ratio (excl. intercompany lending, %)	79.7
6. Long-term external debt service to EGNFSp ratio (incl. intercompany lending, %)	45.7
7. Long-term external debt service to EGNFSp ratio (excl. intercompany lending, %)	27.7
8. Interest payments to EGNFSp ratio (%)	6.5
9. Reserve assets of the National Bank of Kazakhstan to a short-term external debt (%)	87.3
10. Reserve assets of the National Bank of Kazakhstan to a short-term debt on remaining maturity basis (Guidotti rule) (%)	
11. Reserve assets of the National Bank of Kazakhstan and foreign assets of the National Fund of Kazakhstan to a short-term debt on remaining maturity basis (%)	
Reference:	
Population (in thousands)*	15,217.7
GDP (bln. KZT), the period**	7,590.6
GDP for the 12 months (bln. USD)***	57.1
Exports of goods and non-factor services for the period (EGNFSp)	30,386.5
Exports of goods and non-factor services for the 12 months (EGNFSy)	30,386.5

*Source: Committee on Statistics of the Ministry of National Economy of the RK (CS MNE) (th

**Data of the CS MNE. Data for years: 2011-2015 was updateb by CS MNE on July 29th, 2016

*** GDP in USD for the calendar year is the information of CS MNE. GDP in USD dollars for 1 using corresponding average value of the exchange rate for the quarter

2006	2007	2008	2009	2010	2011	2012	2013
74,014.1	96,893.0	107,933.4	112,866.9	118,222.8	125,320.8	136,918.2	150,032.9
25,513.0	30,080.6	40,198.8	49,632.0	52,274.7	62,576.2	67,608.3	74,179.5
48,501.1	66,812.4	67,734.6	63,234.9	65,948.0	62,744.6	69,310.0	75,853.4
16,705.0	28,843.6	34,096.9	38,970.5	25,397.9	29,622.6	31,951.5	31,869.5
10,660.5	20,644.8	25,311.2	31,030.5	15,637.8	16,875.1	18,902.4	19,317.5
3,150.5	4,292.3	4,238.1	3,902.6	4,011.3	3,763.0	4,098.7	4,420.1
91.4	92.4	80.9	97.9	79.9	65.1	65.8	63.4
59.9	63.7	50.8	54.8	44.5	32.6	33.3	32.1
178.6	187.1	141.5	235.0	180.5	140.0	149.2	164.9
117.0	129.0	88.8	131.7	100.7	70.1	75.5	83.4
40.3	55.7	44.7	81.1	38.8	33.1	34.8	35.0
25.7	39.9	33.2	64.6	23.9	18.8	20.6	21.2
8.4	10.9	8.1	11.0	7.2	5.3	5.6	5.5
153.7	152.9	209.2	330.3	318.6	372.4	311.1	261.0
77.1	59.7	65.8	109.4	116.5	131.8	104.7	105.0
							405.8
15,394.6	15,565.6	15,982.4	16,203.3	16,440.5	16,673.9	16,910.2	17,160.9
10,213.7	12,849.8	16,052.9	17,007.6	21,815.5	28,243.1	31,015.2	35,999.0
81.0	104.9	133.4	115.3	148.1	192.6	208.0	236.6
41,438.3	51,772.9	76,256.6	48,027.1	65,510.6	89,531.6	91,759.3	90,980.2
41,438.3	51,772.9	76,256.6	48,027.1	65,510.6	89,531.6	91,759.3	90,980.2

The indicator has been recalculated from the end of 2009 to 2016 due to data's reconsideration by the CS; data for 2016 - on July 31st, 2017; data for 9 months of 2017 was published on December 26th, 2017. 12 months for the reasons of calculating relative parameters on quarterly basis is calculated as the sum

2014	2015
157,561.5	153,384.8
79,581.8	96,132.2
77,979.7	57,252.6
31,775.9	38,100.9
17,885.7	24,705.9
4,477.5	3,240.1
71.2	83.2
35.2	31.1
181.3	289.4
89.7	108.0
36.6	71.9
20.6	46.6
5.8	9.9
300.7	430.2
107.1	126.0
375.5	412.6
17,415.7	17,669.9
39,675.8	40,884.1
221.4	184.4
86,927.6	52,991.9
86,927.6	52,991.9

(MNE)

7

of quarter data in USD,

ED and GDP
in USD million

1000

Year	ED (USD billion)	GDP (USD billion)	ED
	X	Y	
2005	43.43	57.12	43.43
2006	74.01	81.00	74.01
2007	96.89	104.85	96.89
2008	107.93	133.44	107.93
2009	112.87	115.31	112.87
2010	118.22	148.05	118.22
2011	125.32	192.63	125.32
2012	136.92	208.00	136.92
2013	150.03	236.63	150.03
2014	157.56	221.42	157.56
2015	153.38	184.39	153.38

Correlation matrix

	GDP	ED
GDP	1	
ED	0.933	1

Covariance matrix

	ED	GDP
ED	1116.54	
GDP	1777.15	3252.54

SUMMARY OUTPUT

<i>Regression Statistics</i>	
Multiple R	0.932556962
R Square	0.869662487
Adjusted R Squ	0.855180542
Standard Error	22.76256474
Observations	11

ANOVA

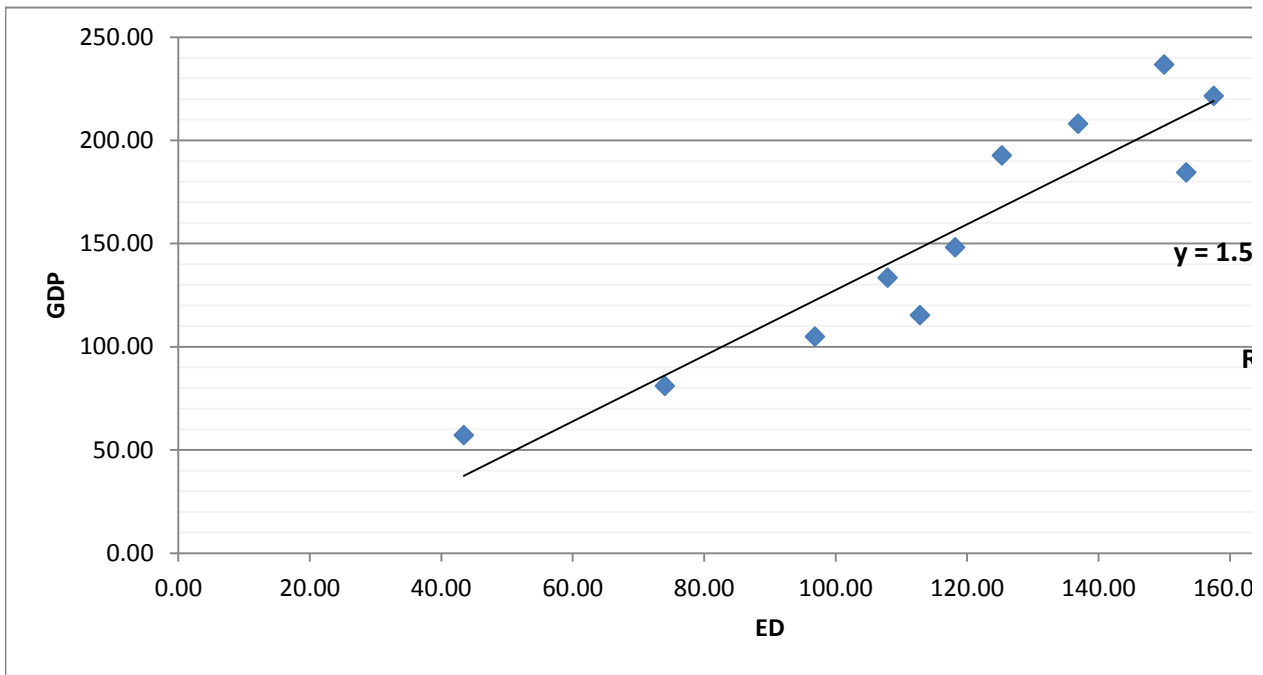
	df	SS	MS	F
Regression	1	31114.74214	31114.74	60.051494
Residual	9	4663.209183	518.1344	
Total	10	35777.95132		

	Coefficients	Standard Error	t Stat	P-value
Intercept	-31.729	24.80481477	-1.27916	0.2328347
ED	1.592	0.205393673	7.74929	2.852E-05

RESIDUAL OUTPUT

Observation	Predicted GDP	Residuals
1	37.39392588	19.72977412

2	86.07559262	-5.07209262
3	122.4909337	-17.63743365
4	140.0634006	-6.622700599
5	147.9158498	-32.60974976
6	156.4405545	-8.388154451
7	167.7381453	24.8894547
8	186.1972723	21.8048277
9	207.0712693	29.56203075
10	219.0542371	2.363462862
11	212.406419	-28.01941905

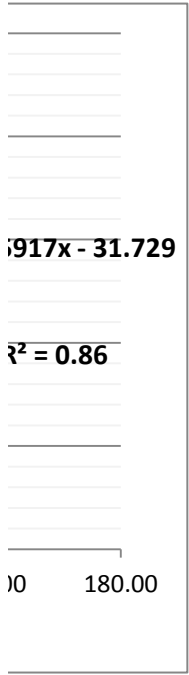


GDP
57.12
81.00
104.85
133.44
115.31
148.05
192.63
208.00
236.63
221.42
184.39

Significance F

2.85205E-05

<i>Lower 95%</i>	<i>Upper 95%</i>	<i>Lower 95.0%</i>	<i>Upper 95.0%</i>
-87.84170218	24.38307661	-87.84170218	24.38307661
1.127022353	2.056287892	1.127022353	2.056287892



IPP and GDP
in USD million

Year	IIP (USD billion) X	GDP (USD billion) Y
2005	-20.27	57.12
2006	-28.96	81.00
2007	-44.31	104.85
2008	-38.83	133.44
2009	-43.02	115.31
2010	-35.56	148.05
2011	-32.82	192.63
2012	-35.34	208.00
2013	-33.29	236.63
2014	-40.35	221.42
2015	-41.47	184.39

Correlation matrix

	GDP	ED
GDP	1	
ED	-0.33	1

Covariance matrix

	IIP	GDP
IIP	44.54	
GDP	-125.21	3252.54

SUMMARY OUTPUT

<i>Regression Statistics</i>	
Multiple R	0.328971922
R Square	0.108222525
Adjusted R Square	0.009136139
Standard Error	59.54080868
Observations	11

ANOVA

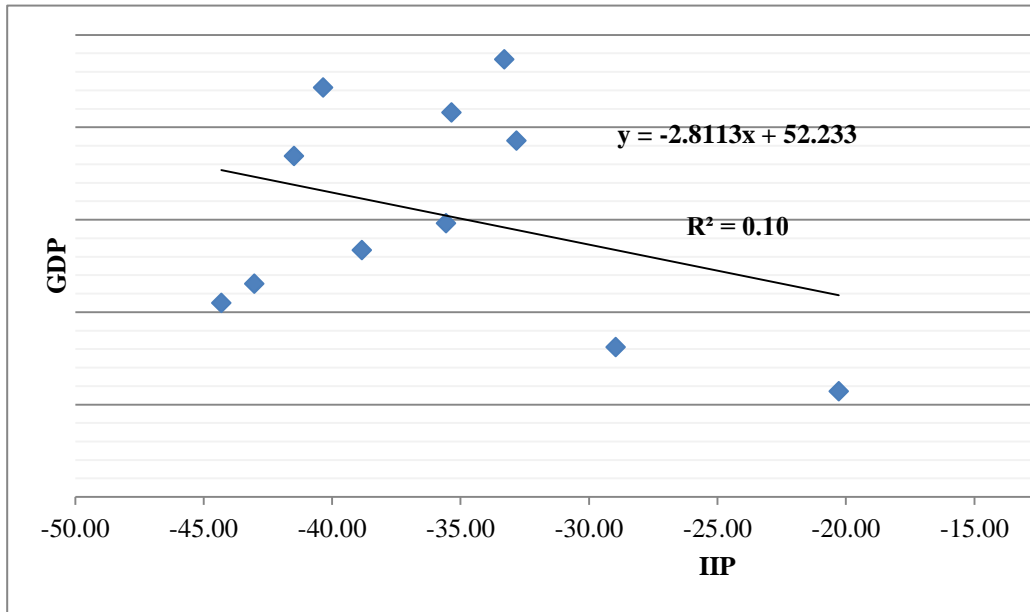
	df	SS	MS
Regression	1	3871.980239	3871.980239
Residual	9	31905.97108	3545.107898
Total	10	35777.95132	

	Coefficients	Standard Error	t Stat
Intercept	52.233	98.06340107	0.53264989
IIP	-2.811	2.689976802	-1.045085536

RESIDUAL OUTPUT

Observation	Predicted GDP	Residuals
1	109.2278314	-52.10413139

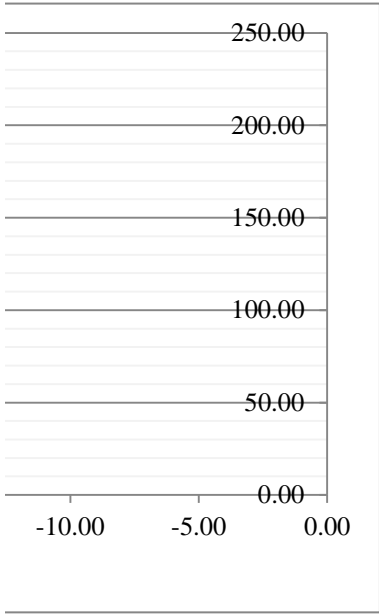
2	133.6430017	-52.63950174
3	176.7931593	-71.93965934
4	161.3957032	-27.95500323
5	173.1855577	-57.87945775
6	152.2077234	-4.155323381
7	144.4910327	48.13656725
8	151.5942277	56.40787227
9	145.8231329	90.81016711
10	165.6650258	55.75267422
11	168.821204	15.56579596



IIP	GDP
-20.27	57.12
-28.96	81.00
-44.31	104.85
-38.83	133.44
-43.02	115.31
-35.56	148.05
-32.82	192.63
-35.34	208.00
-33.29	236.63
-40.35	221.42
-41.47	184.39

<i>F</i>	<i>Significance F</i>
1.092203778	0.323239639

<i>P-value</i>	<i>Lower 95%</i>	<i>Upper 95%</i>	<i>Lower 95.0%</i>	<i>Upper 95.0%</i>
0.607174464	-169.6013653	274.068285	-169.6013653	274.068285
0.323239639	-8.896406139	3.273894442	-8.896406139	3.273894442



BoP

Balance of payments	Credits	Debits
1 Current account		
Current account balance		
1.A Goods and services		
Balance on goods and services		
1.A.a Goods		
1.A.b Services		
1.B Primary income		
Balance on primary income		
1.C Secondary income		
Balance on secondary income		
2 Capital account		
Capital account balance		
Net lending (+) /net borrowing (-) (balance from current and capital accounts)		
	Net acquisition of financial assets	Net Incurrence of liabilities
3 Financial account		
Net lending (+) /net borrowing (-) (from financial account)		
	Credits	Debits
<i>Net errors and omissions</i>		

ToT

2005	2006	2007	2008	2009	2010	2011	2012	2013
21	9	-3	5	-33	22	31	2	5

Primary income
Investment income

Column1	2010	2011	2012	2013	2014	2015
Income received	2,556.9	2,088.1	1,945.9	2,176.7	2,071.9	2,113.2

Income on dir	303.5	155.9	194.9	347.6	309.4	583.6
Income on poi	716.6	901.3	959.9	1,094.4	1,183.0	1,035.4
Income on oth	1,536.8	1,031.0	791.1	734.7	579.5	494.1
Income payal	20,665.9	28,242.8	28,274.9	25,660.5	22,903.1	11,790.0
Income on dir	17,997.1	25,213.2	24,753.0	22,510.9	19,763.9	9,197.4
Income on poi	922.8	1,751.2	2,070.3	1,590.9	1,667.1	1,639.3
Income on oth	1,746.1	1,278.4	1,451.6	1,558.7	1,472.1	953.3
Other primary	139.8	139.8	139.8	139.8	139.8	139.8
Investment ir	-18,109.0	-26,154.6	-26,329.0	-23,483.8	-20,831.2	-9,676.9

2005	2006	2007	2008	2009	2010	2011	2012	2013
1590,7	3150,5	4292,3	4238,1	3902,7	4011,4	3763,2	4098,8	4420,2

2005	2006	2007	2008	2009	2010	2011	2012	2013
76.0	91.4	92.4	80.9	97.9	79.9	65.1	65.8	63.4

2005	2006	2007	2008	2009	2010	2011	2012	2013
142.9	178.6	187.1	141.5	235.0	180.5	140.0	149.2	164.9

2005	2006	2007	2008	2009	2010	2011	2012	2013
45.7	40.3	55.7	44.7	81.1	38.8	33.1	34.8	35.0

2005	2006	2007	2008	2009	2010	2011	2012	2013
87.3	153.7	152.9	209.2	330.3	318.6	372.4	311.1	261.0

International investment position

Assets

Net International investment position

1 Direct investment

1.1 Equity and investmnet fud shares

1.2 Debt securities

2 Portfolio investment

2.1 Equity and investmnet fud shares

2.2 Debt securities

3 Financial derivatives (other than reserves) and employee stock options

3.1 Central bank

3.2 Deposit-taking corporations, except the central bank

3.3 General governing

3.4 Other sectors

4 Other investments

4.1 Other equity

4.2 Currency and deposits

4.3 Loans

4.4 Insurance, pension, and standardized guarantee schemes

4.5 Trade and other advances

4.6 Other accounts receivable/payable

4.7 Special drawing rights

5 Reserve assets

5.1 Monetary gold

5.2 Special drawing rights

5.3 Reserve position in the IMF

5.4 Other reserve assets

Total assets/liabilities

2014	2015
-2	-27

2014	2015
4477,1	4052,8

2014	2015
71.2	83.2

2014	2015
181.3	289.4

2014	2015
36.6	71.9

2014	2015
300.7	430.2

Liabilities

Appendix 1

	2005	2006	2007	2008	2009
Current Account	-1,036.0	-1,999.9	-8,372.3	6,250.1	-4,120.8
Trade balance	10,361.5	14,691.7	15,226.2	33,612.0	15,003.9
Exports	28,299.2	38,761.4	48,348.1	71,964.2	43,923.4
Imports	17,937.7	24,069.7	33,121.9	38,352.2	28,919.5
Services	-5,434.0	-6,134.2	-8,443.2	-6,926.5	-5,978.0
Exports	2,087.3	2,676.9	3,424.8	4,292.4	4,103.7
Imports	7,521.3	8,811.1	11,868.1	11,218.9	10,081.7
Primary income	-5,555.5	-9,350.0	-12,945.7	-19,375.3	-12,417.5
Compensation of employees, net	-728.4	-948.4	-1,203.2	-1,452.0	-1,304.8
Investment income, net	-4,969.6	-8,544.1	-11,884.9	-18,063.1	-11,252.4
Income receivable	844.7	1,623.3	3,661.5	3,595.0	3,033.3
Income on direct investment	9.3	10.9	268.8	170.9	68.0
Income on portfolio investment	234.6	493.8	857.0	914.1	863.2
Income on other investment	600.8	1,118.6	2,535.7	2,510.0	2,102.2
Income payable	5,814.3	10,167.5	15,546.4	21,658.1	14,285.7
Income on direct investment	4,804.8	7,898.2	11,514.3	17,315.7	10,960.9
Income on portfolio investment	154.3	341.9	394.5	321.4	251.4
Income on other investment	855.2	1,927.4	3,637.6	4,021.0	3,073.4
Other primary income, net	142.5	142.5	142.5	139.8	139.8
Secondary income	-408.0	-1,207.4	-2,209.6	-1,060.1	-729.2
Capital account balance	4.5	30.8	35.8	19.3	31.4
Financial account (excluding reserve assets)	2,293.8	-11,803.4	-1,993.6	1,680.5	-3,919.2
Direct investment	-2,119.1	-6,689.4	-8,030.5	-13,114.7	-10,083.3
Portfolio investment	3,952.7	4,501.4	4,583.1	9,377.5	-3,093.1
Financial derivatives, net	112.6	67.8	369.1	-163.7	-66.2
Other investment	347.6	-9,683.2	1,084.7	5,581.5	9,323.3
Net errors and omissions	1,381.5	1,240.3	3,314.2	-2,423.7	2,638.7
Overall balance	1,943.8	-11,074.6	3,028.7	-2,165.2	-2,468.5
Financing	-1,943.8	11,074.6	-3,028.7	2,165.2	2,468.5
Reserve assets NBK	-1,943.8	11,074.6	-3,028.7	2,165.2	2,468.5
IMF credits	0.0	0.0	0.0	0.0	0.0
Exceptional financing	0.0	0.0	0.0	0.0	0.0