

Appendices

Appendices	i
Appendix A	i
Appendix B.....	xvi

Appendix A

Series of aerial photos of LUCAS point IDs (red dots) that fit the agroforestry systems definitions

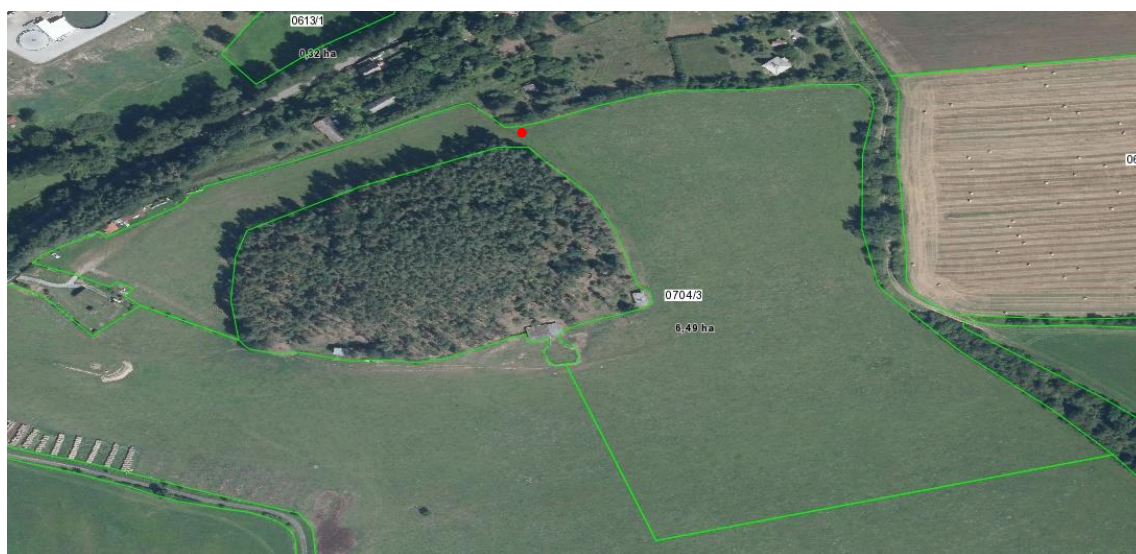


Figure 1. LUCAS point ID 46362972, Čím village, nearby Nového Knín town, resolution 1:3000 (public LPIS).



Figure 2. LUCAS point ID 47542924, Nový Dvůr municipality, resolution 1:2000 (public LPIS).

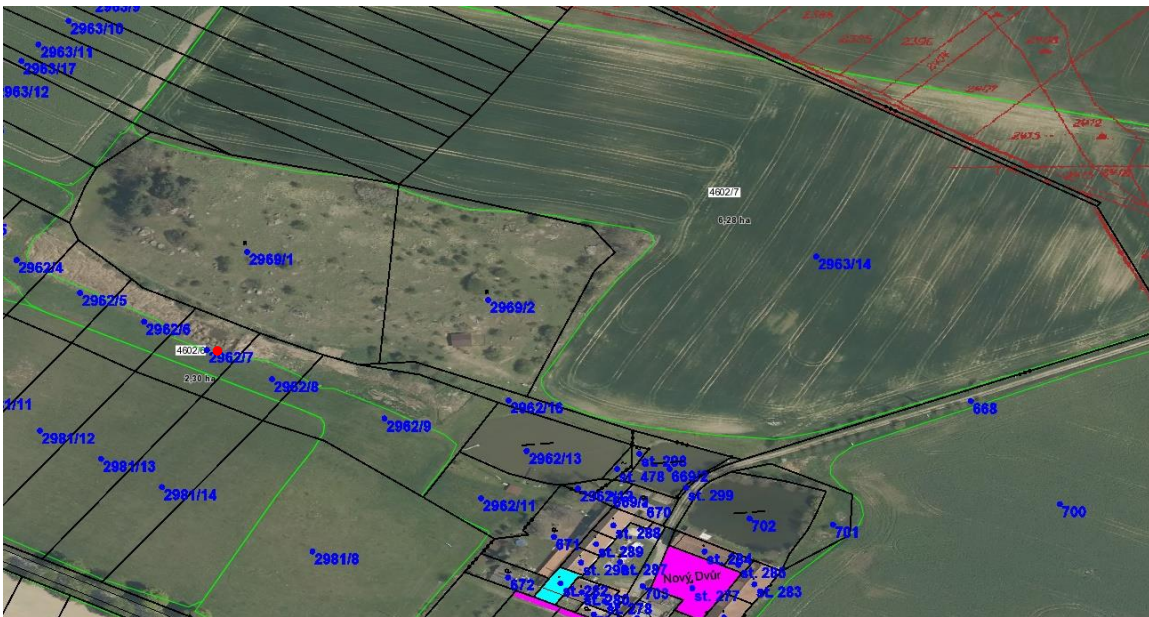


Figure 3. LUCAS point ID 47542924, Nový Dvůr municipality, resolution 1:2000 (Public LPIS and WMS Katastralni mapy).

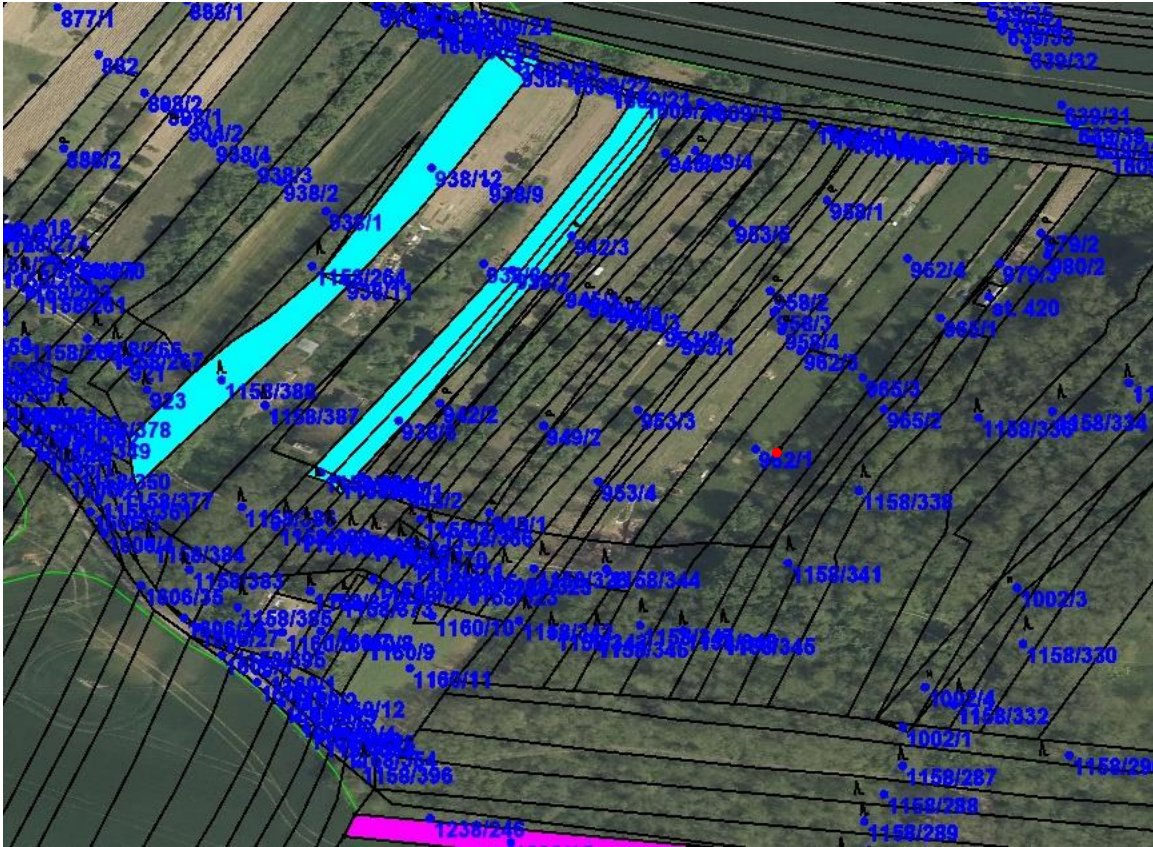


Figure 4. LUCAS point ID 47862906, Němčice u Ivančic municipality, resolution 1: 2000 (public LPIS and WMS Katastralni mapy).



Figure 5. LUCAS point ID 47942946, Žerůtky village, nearby Rájec-Jestřebí, resolution 1:3000 (public LPIS).



Figure 6. LUCAS point ID 47542960, Počítky village, nearby Ždár nad Sázavou, resolution 1:2000 (public LPIS).



Figure 7. LUCAS point ID 46922902, Kačlehy village, resolution 1:2000 (public LPIS).



Figure 8. LUCAS point ID 48982916, nearby Divnice village, resolution 1:3000 (public LPIS).

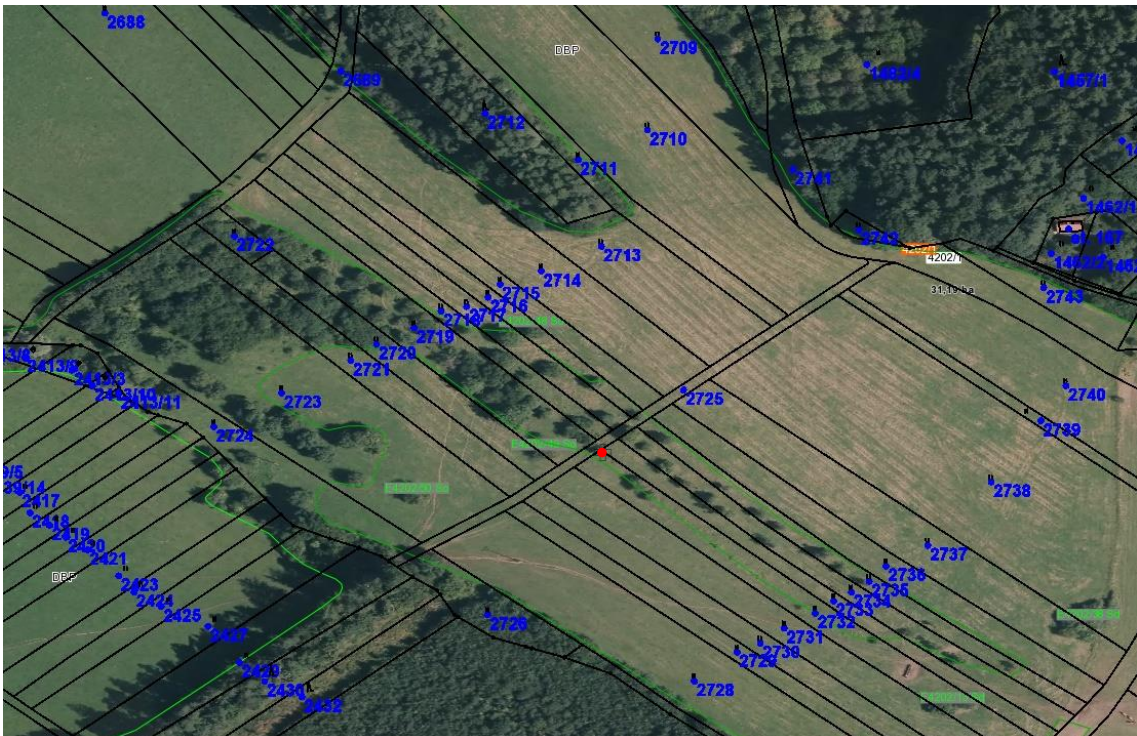


Figure 9. LUCAS point ID 48982916, nearby Divnice village, resolution 1:3000 (public LPIS and WMS Katastralni mapy).



Figure 10. LUCAS point ID 48362944, Dobrochov village, resolution 1:3000 (public LPIS and WMS Katastralni mapy).



Figure 11. LUCAS point ID 47402986, Bratroňov village, resolution 1:3000 (public LPIS and WMS Katastralni mapy).

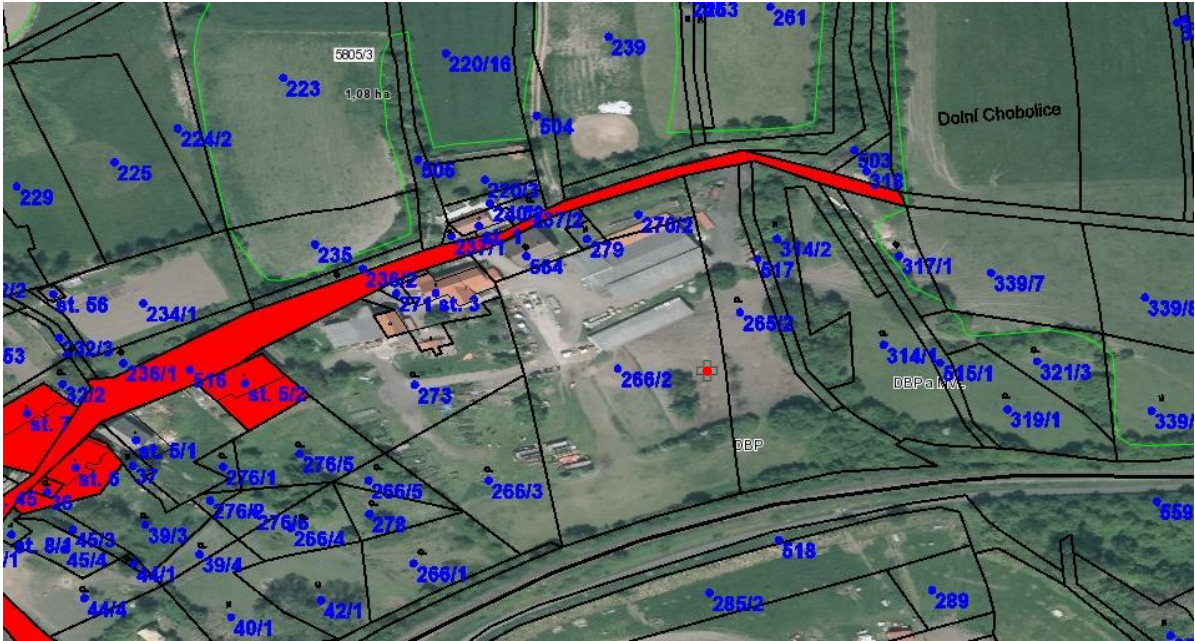


Figure 12. LUCAS point ID 46243060, Dolní Chobolice village, resolution 1:2000 (public LPIS and WMS Katastralni mapy).

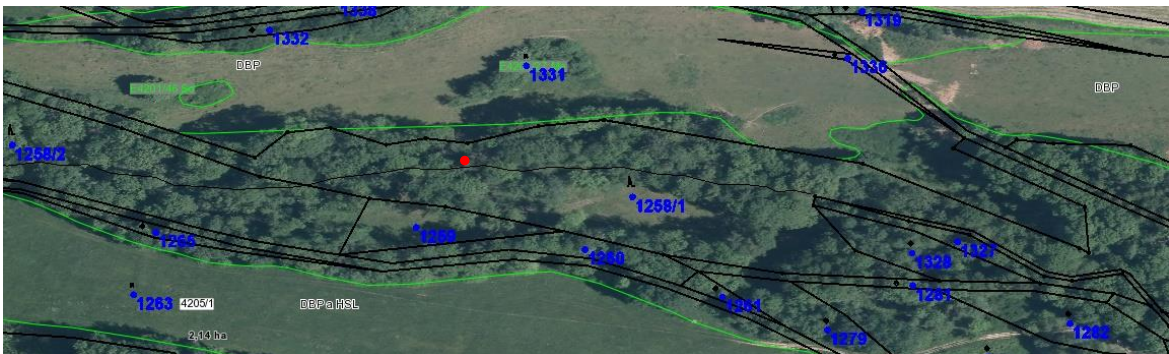


Figure 13. LUCAS point ID 46223076, Fojtovice village, nearby Benešov nad Ploučnicí town, resolution 1:2000 (public LPIS and WMS Katastralni mapy).

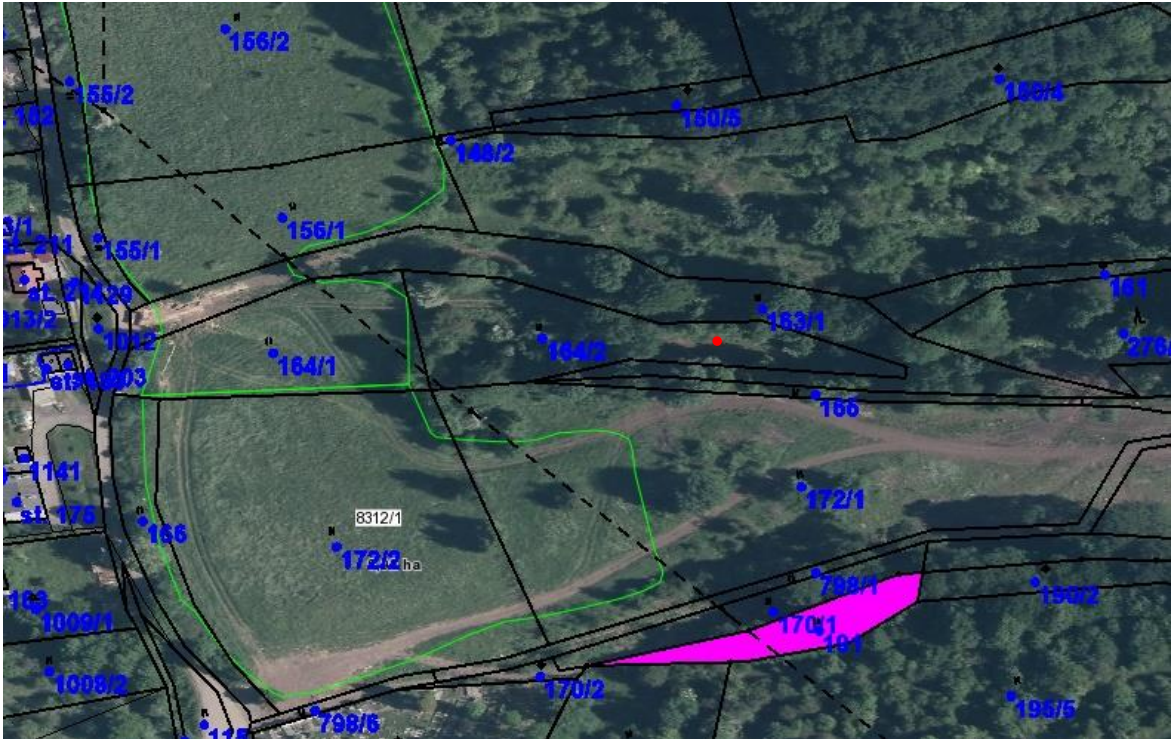


Figure 14. LUCAS point ID 46183074, Těchlovice village, resolution 1:2000 (public LPIS and WMS Katastralni mapy).

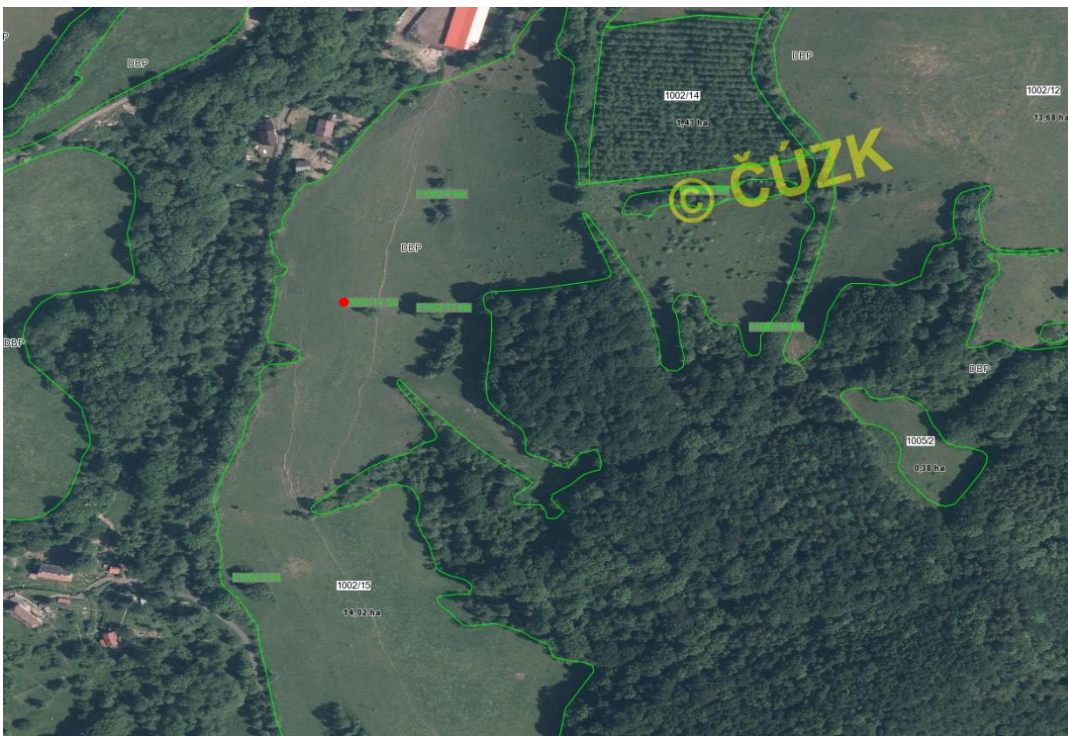


Figure 15. LUCAS point ID 46143076, Hliněná village, resolution 1:3000 (public LPIS).

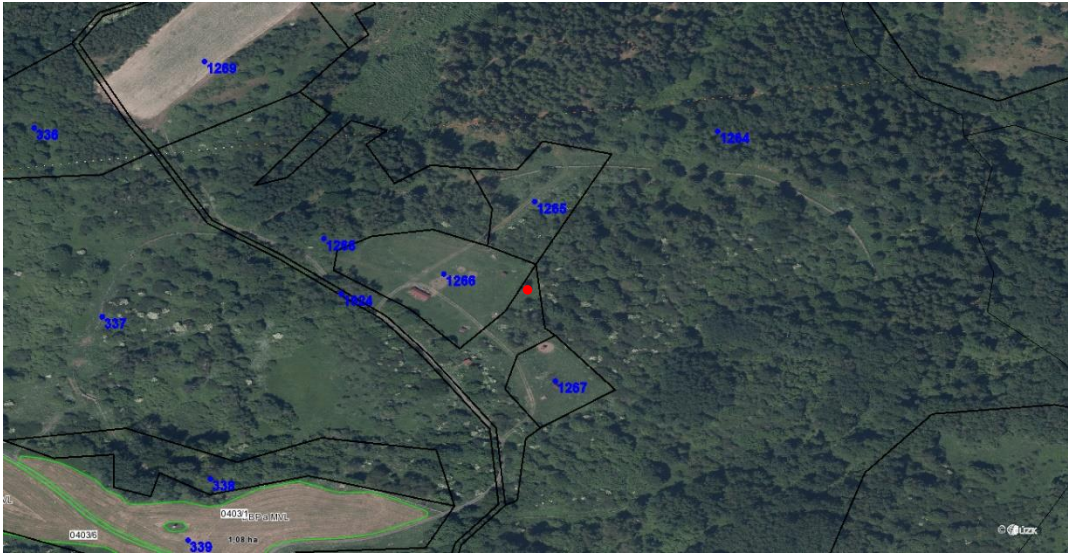


Figure 16. LUCAS point ID 45363016, Doupovské Hradiště village, resolution 1:3000 (public LPIS and WMS Katastralni mapy).

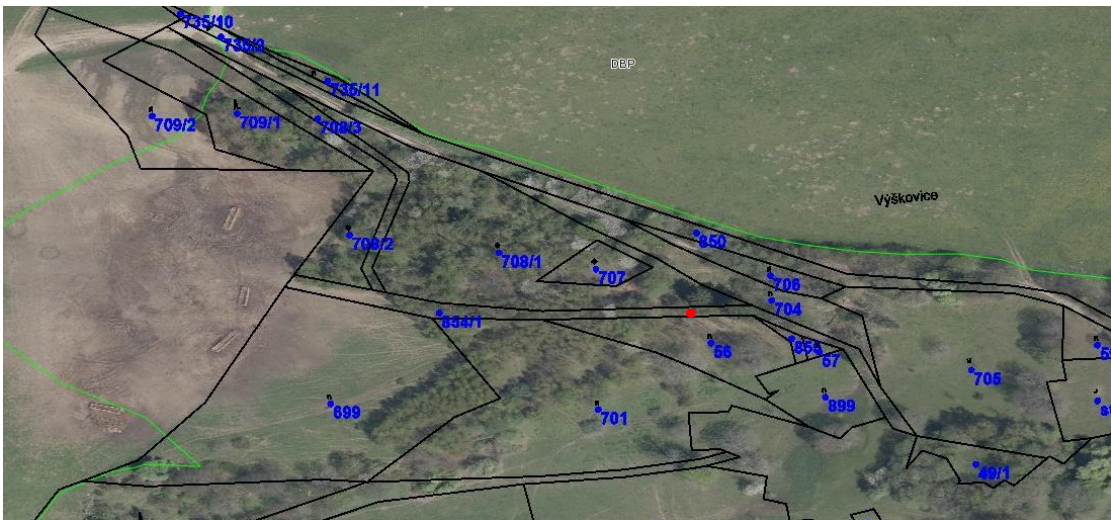


Figure 17. LUCAS point ID 45222984, Výškovice municipality, resolution 1:2000 (public LPIS and WMS Katastralni mapy).



Figure 18. LUCAS point ID 45102940, Pleš municipality, resolution 1:2000 (public LPIS).

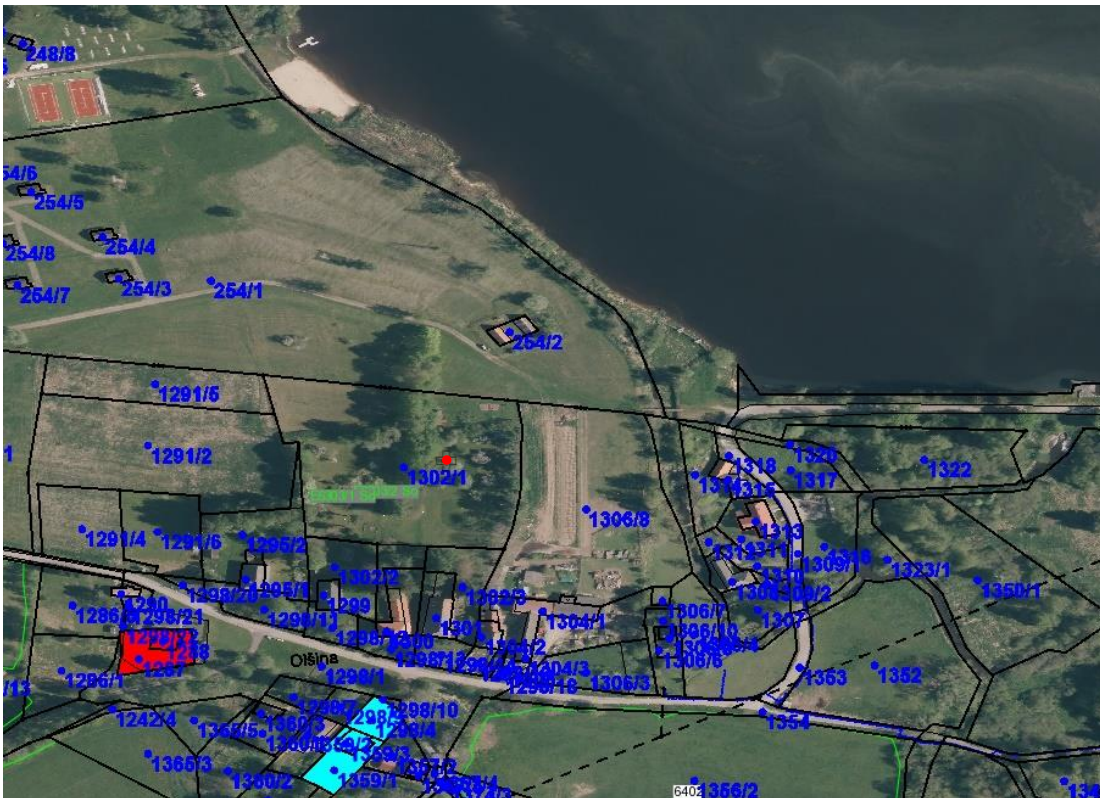


Figure 19. LUCAS point ID 46222860, Olšina village, nearby the Olšina pond, resolution 1:2000 (public LPIS and WMS Katastralni mapy).

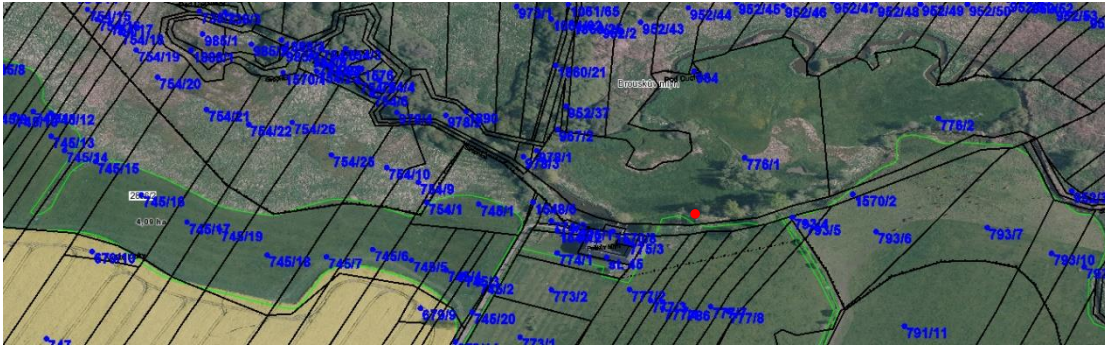


Figure 20. LUCAS point ID 46642874, Peškův Mlýn, near Borovany town, National Nature Reserve Brouskův Mlýn, resolution 1:2000 (public LPIS and WMS Katastralni mapy).

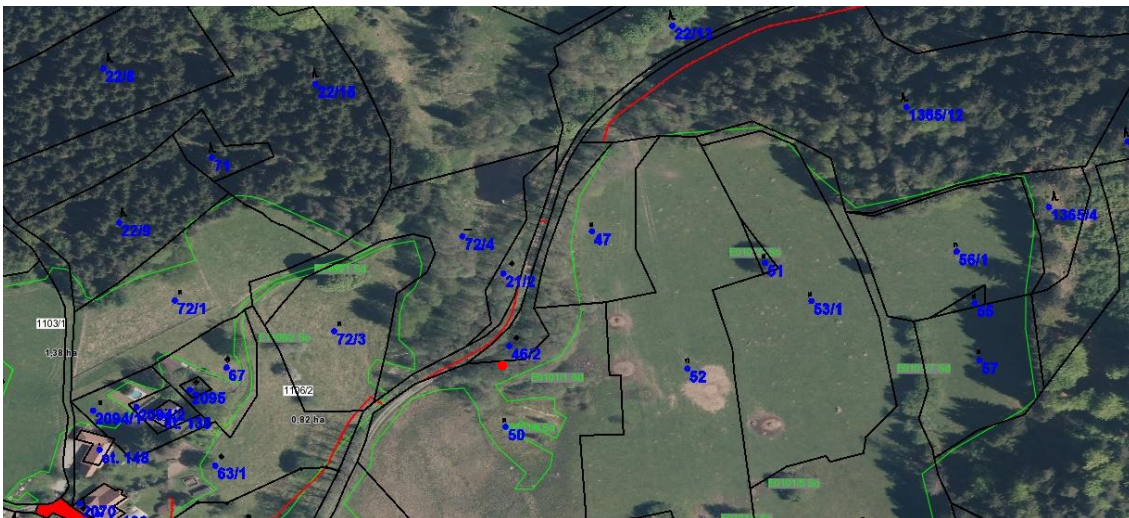


Figure 21. LUCAS point ID 46582860, Daleké Popelice municipality, resolution 1:2000 (public LPIS and WMS Katastralni mapy).



Figure 22. LUCAS point ID 46562844, Cestviny municipality, resolution 1:1000 (public LPIS).



Figure 23. LUCAS point ID 46422844, Horní Mlýn, nearby Vyšší Brod town, resolution 1:3000 (public LPIS and WMS Katastralni mapy).

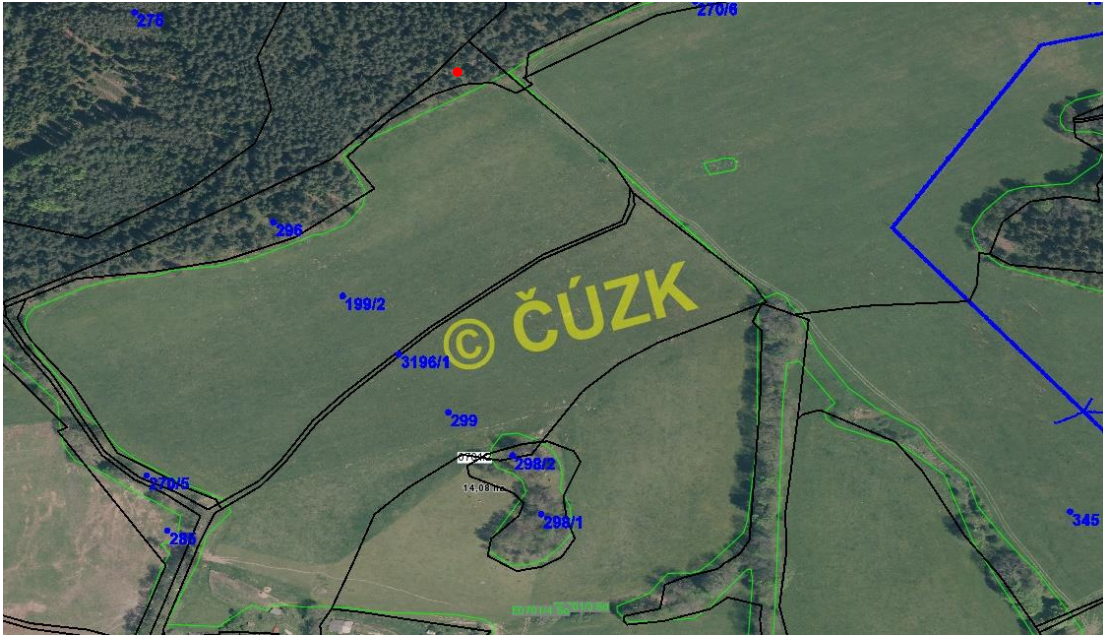


Figure 24. LUCAS point ID 46402850, nearby Horní Jílovice village, resolution 1:2000 (public LPIS and WMS Katastralni mapy).

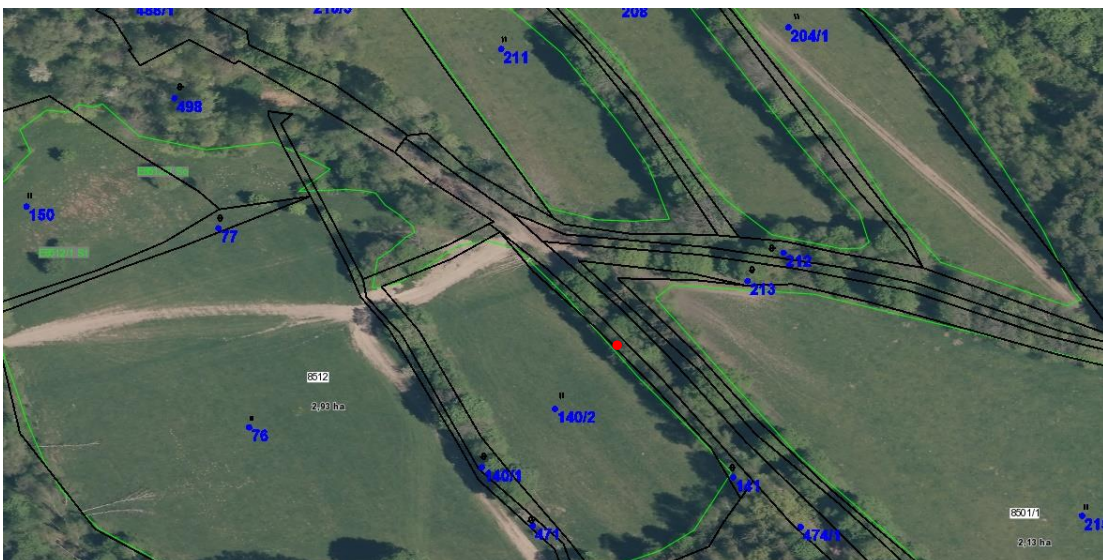


Figure 25. LUCAS point ID 46422852, Rožmitál na Šumavě village, resolution 1:2000 (public LPIS and WMS Katastralni mapy).

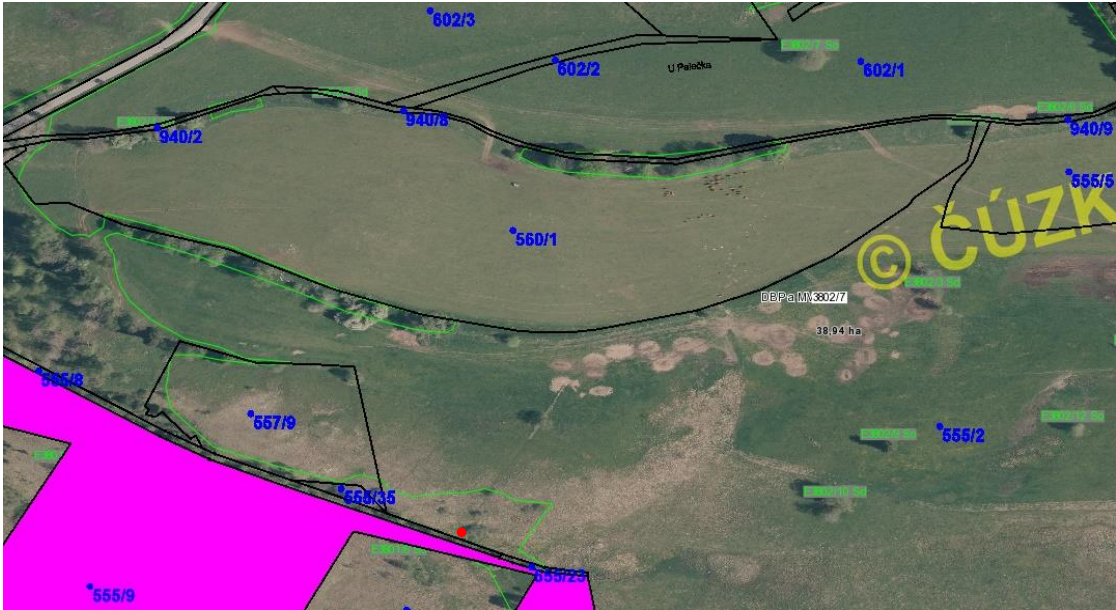


Figure 26. LUCAS point ID 46162854, Přední Zvonková municipality, resolution 1:2000 (public LPIS and WMS Katastralni mapy).



Figure 27. LUCAS point ID 45962874, Strážný village, resolution 1:1500 (public LPIS and WMS Katastralni mapy).

Appendix B

Photos taken by author from the check of random LUCAS point IDs in the terrain



Figure 28. LUCAS point ID 4754294, at the point, photo by author.



Figure 29. LUCAS point ID 4754294, photo by author.



Figure 30. LUCAS point ID 4754294, photo by author.



Figure 31. LUCAS point ID 4754294, photo by author.



Figure 32. LUCAS point ID 4754294, photo by author.



Figure 33. LUCAS point ID 47862906, at the point, photo by author.



Figure 34. LUCAS point ID 47862906, at the point, photo by author.



Figure 35. LUCAS point ID 47862906, goats, sheep and hens, photo by author.



Figure 36. LUCAS point ID 47862906, at the point, photo by author.



Figure 37. LUCAS point ID 47862906, at the point, photo by author.



Figure 38. LUCAS point ID 47862906, at the point, photo by author.



Figure 39. LUCAS point ID 47862906, at the point, photo by author.



Figure 40. LUCAS point ID 47542960, at the point, photo by author.



Figure 41. LUCAS point ID 47542960, at the point, photo by author.



Figure 42. LUCAS point ID 47542960, silver birch, wild cherry, photo by author.



Figure 43. LUCAS point ID 47542960, at the point, photo by author.



Figure 44. LUCAS point ID 47942946, at the point, photo by author.



Figure 45. LUCAS point ID 47942946, at the point, hazelnut shrubs, photo by author.



Figure 46. LUCAS point ID 47942946, at the point, hazelnut shrubs, photo by author.



Figure 47. LUCAS point ID 47942946, at the point, hazelnut shrubs, photo by author.



Figure 48. LUCAS point ID 47942946, at the point, hazelnut shrubs, photo by author.



Figure 49. LUCAS point ID 46922902, at the point, windbreak, photo by author.



Figure 50. LUCAS point ID 46922902, at the point, windbreak, photo by author.



Figure 51. LUCAS point ID 46922902, at the point, windbreak, photo by author.



Figure 52. LUCAS point ID 46922902, at the point, windbreak, photo by author.



Figure 53. LUCAS point ID 46922902, hazelnut male fruits, windbreak, photo by author.



Figure 54. LUCAS point ID 46922902, windbreak consisted of silver birch trees, hazelnuts, and young spruce trees, photo by author.



Figure 55. LUCAS point ID 4664287, National Nature Reserve Brouskův Mlýn, nearby Peškův Mlýn historical house, photo by author.



Figure 56. LUCAS point ID 4664287, National Nature Reserve Brouskův Mlýn, nearby Peškův Mlýn historical house, photo by author.



Figure 57. LUCAS point ID 4664287, National Nature Reserve Brouskův Mlýn, nearby Peškův Mlýn historical house, photo by author.



Figure 58. LUCAS point ID 4664287, National Nature Reserve Brouskův Mlýn, nearby Peškův Mlýn historical house, photo by author.



Figure 59. LUCAS point ID 46222860, orchard with horses nearby, Olšina village, photo by author.



Figure 60. LUCAS point ID 46222860, orchard with horses nearby, Olšina village, photo by author.



Figure 61. LUCAS point ID 46222860, orchard with horses nearby, Olšina village, photo by author.



Figure 62. LUCAS point ID 46222860, orchard with horses nearby, Olšina village, photo by author.



Figure 63. LUCAS point ID 46162854, pastures with cows, Přední Zvonková village, photo by author.



Figure 64. LUCAS point ID 46162854, pastures with cows, Přední Zvonková village, photo by author.



Figure 65. LUCAS point ID 46162854, pastures with cows, Přední Zvonková village, photo by author.



Figure 66. LUCAS point ID 46162854, pastures with cows, Přední Zvonková village, photo by author.



Figure 67. LUCAS point ID 48362944, pasture, Dobrochov village, photo by author.



Figure 68. LUCAS point ID 48362944, pasture, Dobrochov village, photo by author.



Figure 69. LUCAS point ID 48362944, pasture, Dobrochov village, photo by author.



Figure 70. LUCAS point ID 48362944, pasture, Dobrochov village, photo by author.



Figure 71. LUCAS point ID 48982916, pasture, nearby Hrádek na Vlárské Dráze village, photo by author.



Figure 72. LUCAS point ID 48982916, pasture, nearby Hrádek na Vlárské Dráze village, photo by author.



Figure 73. LUCAS point ID 48982916, pasture, nearby Hrádek na Vlárské Dráze village, photo by author.



Figure 74. LUCAS point ID 48982916, pasture, nearby Hrádek na Vlárské Dráze village, photo by author.



Figure 75. LUCAS point ID 48982916, pasture, nearby Hrádek na Vlárské Dráze village, photo by author.



Figure 76. LUCAS point ID 48982916, pasture, nearby Hrádek na Vlárské Dráze village, photo by author.