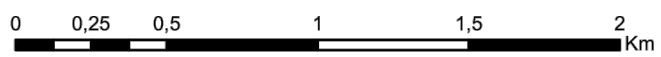
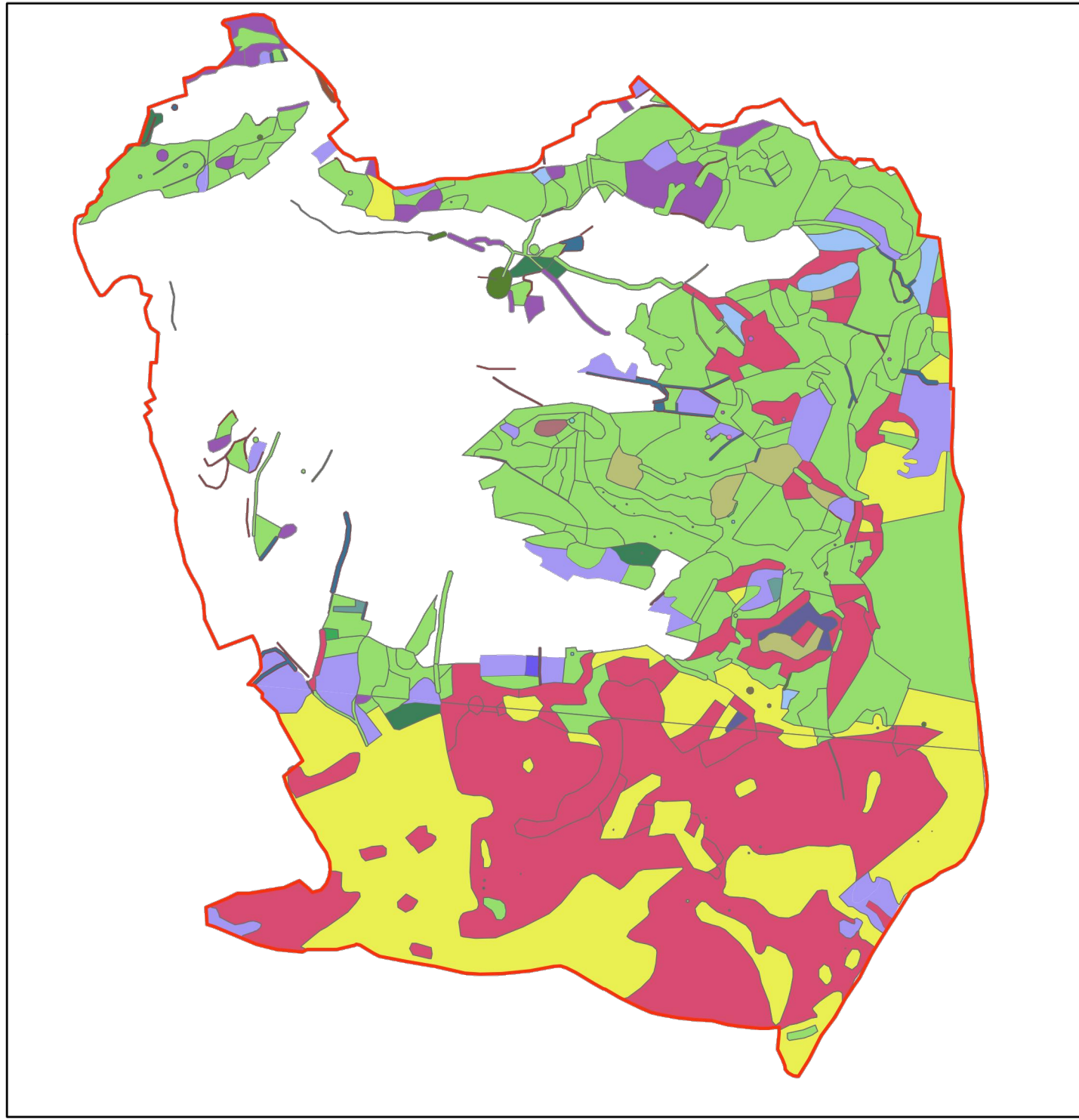


Biotope k. ú. obce Nedašov roku 2002

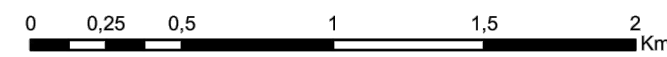
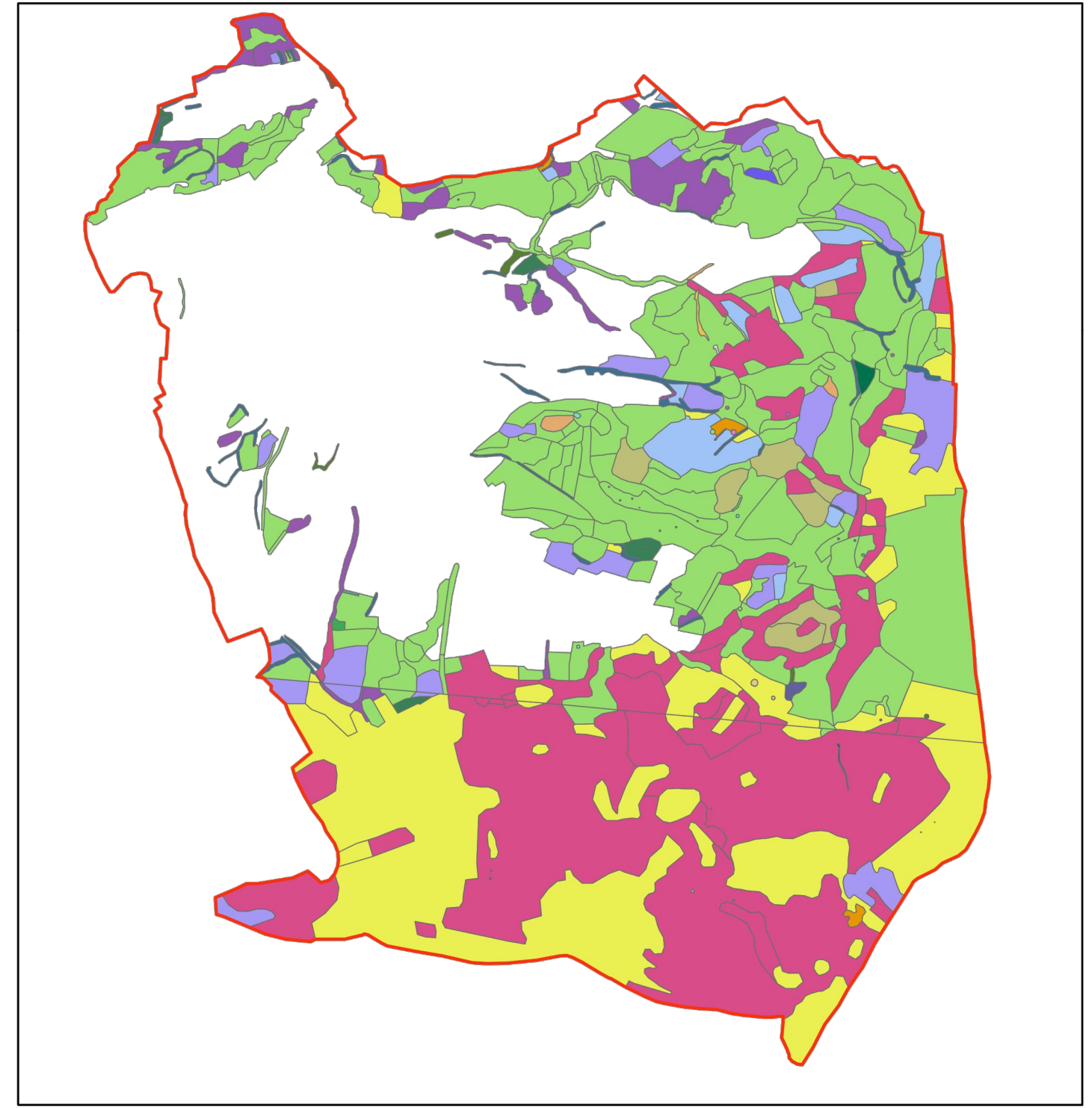


Vrstva mapování biotopů, AOPK ČR 2012.

1:25 000

| | | | | |
|---------------------|------|-------|---------------------|-----|
| biotope 2002 | R1.3 | T1.10 | L2.2A | X3 |
| BIOTOP | R1.4 | T3.4B | L2.2B | X5 |
| moz. | R2.1 | T3.4D | L3.3B | X9A |
| M1.5 | T1.1 | T8.1A | L5.1 | X10 |
| M1.7 | T1.3 | K2.1 | L5.4 | X11 |
| R1.1 | T1.6 | K3 | X1 | X12 |
| | | | katastrální hranice | |

Biotope k. ú. obce Nedašov roku 2014



Filip Cícha, Brno 2015

1:25 000

| | | | | | |
|---------------------|------|-------|-------|-----|---------------------|
| biotope 2014 | R1.3 | T1.10 | L2.2A | X3 | X12 |
| Biotop | R1.4 | T3.4B | L2.2B | X5 | X13 |
| moz. | R2.1 | T3.4D | L3.3B | X7 | katastrální hranice |
| M1.5 | T1.1 | T8.1A | L5.1 | X9A | |
| M1.7 | T1.3 | K2.1 | L5.4 | X9B | |
| R1.1 | T1.6 | K3 | X1 | X10 | |