

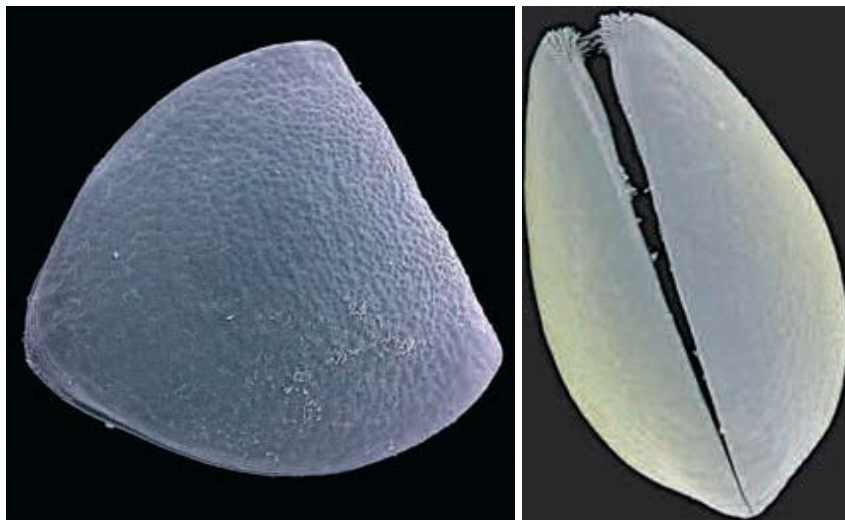
10 ENCLOSURES

1. *Unio tumidus*



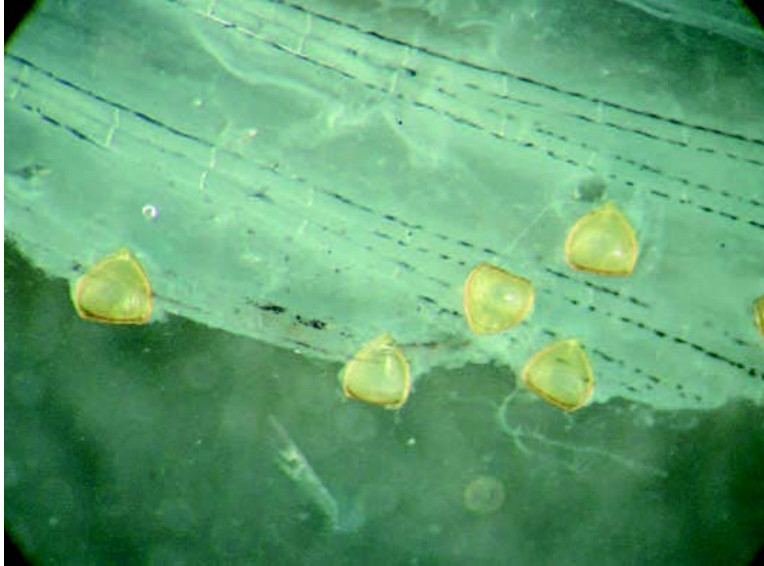
Picture 1 *Unio tumidus*, Studénka, Moravia. Photo by © Michal Horsák. Online at <http://mollusca.sav.sk/malacology/img/unio-tumidus/>

2. *Glochidium Anodonta anatina*



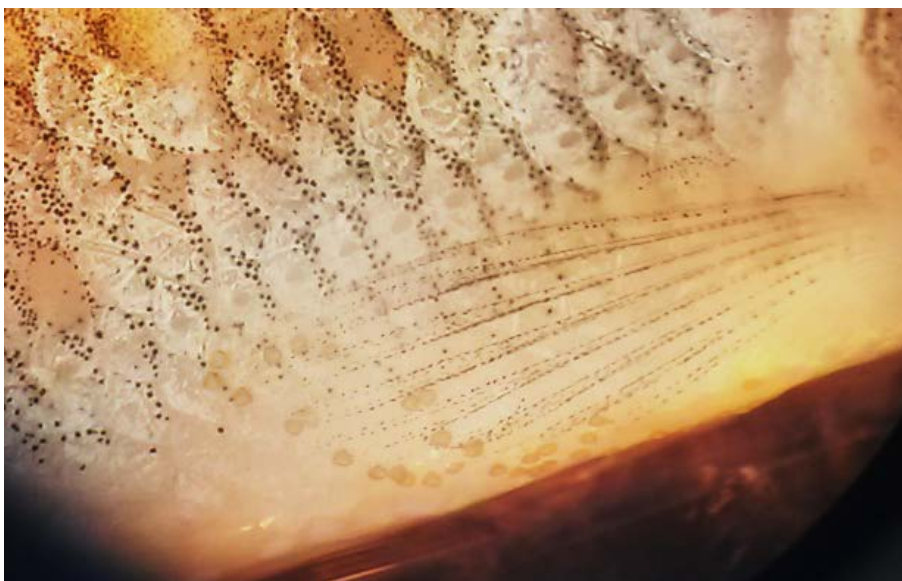
Picture 2 A single glochidium. Pictures from the top and profile (Douda 2015).

3. *Glochidia attached on fish host (Perca fluviatilis)*



Picture 3 Glochidia attached on fish fins (Douda 2015).

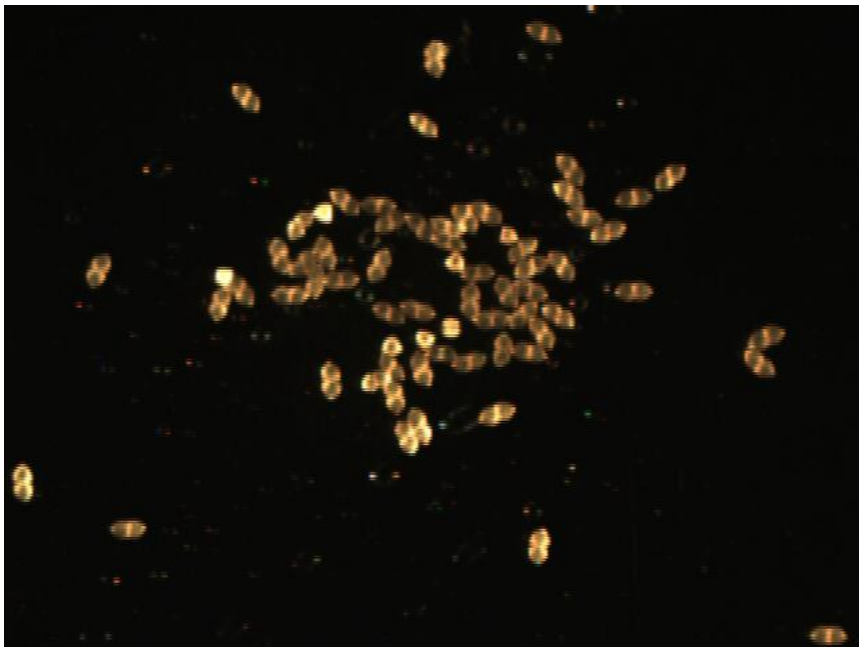
4. *Glochidia U. tumidus attached on fish host S. cephalus both used in this experiment*



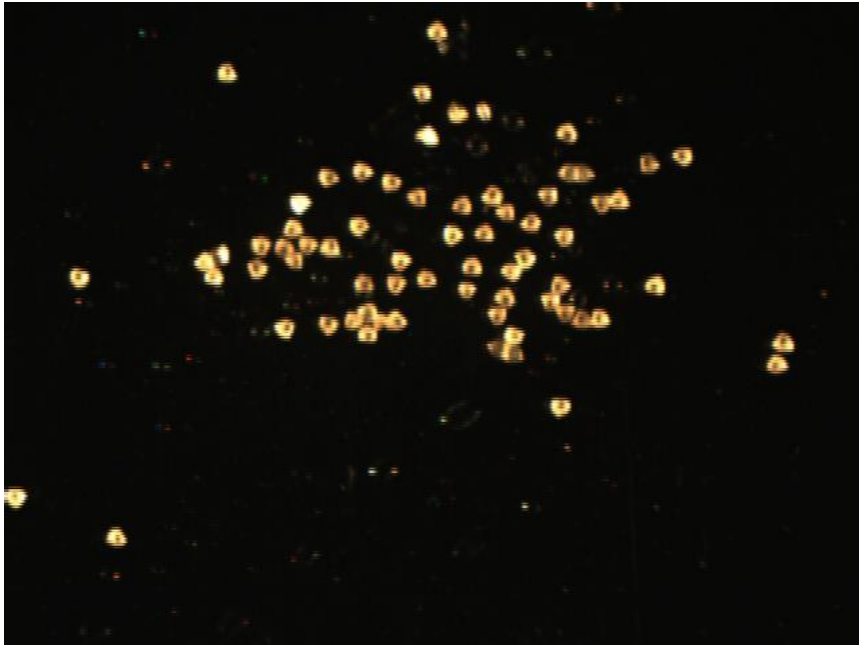
5. *Fish S. cephalus* used in this experiment



6. *Opened glochidia before variability test*



7. *Glochidia after variability test, most of them closed by NaCl, few of them remained opened.*



8. Table 1

Measured total number of glochidia subdivided by groups. Glochidia in total shows amount of glochidia entered the infection process. Attached glochidia before 24-h relates to primary attachment success. Glochidia attached to the host are associated with successful survival after 24-h infection

	<i>EXPOSED</i> fish			<i>CONTROL</i> fish		
	<i>CONTROL</i>	<i>LOW-EXPOSED</i>	<i>HIGH-EXPOSED</i>	<i>CONTROL</i>	<i>LOW-EXPOSED</i>	<i>HIGH-EXPOSED</i>
Glochidia in total	2554 ± 677	2098 ± 703	1967 ± 998	1992±786	1938 ± 512	2036 ± 1080
Initially attached glochidia	274 ± 171	178 ± 94	256 ± 173	133 ± 133	184 ± 186	222 ± 220
Glochidia attached to the host till the end	195 ± 138	119 ± 73	165 ± 128	85 ± 115	133 ± 167	143 ± 161

9. *Table 2*

Measured parameters about fish hosts, length, weight and number of attached glochidia per fish. Measurement was performed during dissection promptly after infection. The nominal concentration for sertraline was 0.65 nmol L⁻¹ (0.2 µg L⁻¹) and 13.06 nmol L⁻¹ (4 µg L⁻¹).

<i>Fish group</i>	<i>Glochidia group</i>	Length [mm]	Weight [g]	Number of glochidia
<i>CONTROL</i>	<i>CONTROL</i>	74.7 ± 9.3	5.7 ± 2.6	85 ± 115
	<i>LOW-EXPOSED</i>	74.6 ± 14.4	5.7 ± 3.5	133 ± 167
	<i>HIGH-EXPOSED</i>	76.8 ± 9.2	6.1 ± 2.4	143 ± 161
<i>EXPOSED</i>	<i>CONTROL</i>	74.3 ± 16.7	5.6 ± 4.8	195 ± 138
	<i>LOW-EXPOSED</i>	73.9 ± 17.1	5.9 ± 6	119 ± 73
	<i>HIGH-EXPOSED</i>	79.6 ± 15.4	7.3 ± 6.6	165 ± 128

10. Table 3

Concentrations of sertraline ($c = \text{mean} + \text{SD}$) detected in fish brains subdivided by glochidia groups. Mean was calculated for both of control groups and exposed groups of fish, regardless of glochidia exposure condition (Total). Then each glochidia group was considered and calculated concentration of sertraline in fish brains within glochidia groups. The nominal concentration for sertraline was 0.65 nmol L^{-1} ($0.2 \mu\text{g L}^{-1}$) and $13.06 \text{ nmol L}^{-1}$ ($4 \mu\text{g L}^{-1}$).

<i>Sertraline in brain</i>	Total [ng g⁻¹]	Glochidia	c [ng g⁻¹]
Fish	<i>CONTROL</i>	<i>CONTROL</i>	0.68 ± 1.82
	4.68 ± 24.32	<i>LOW-EXPOSED</i>	0.61 ± 2.59
		<i>HIGH-EXPOSED</i>	12.75 ± 16.25
		<i>EXPOSED</i>	<i>CONTROL</i>
	2207 ± 3893	<i>LOW-EXPOSED</i>	1890 ± 1310
		<i>HIGH-EXPOSED</i>	2041 ± 3459

11 LIST OF ENCLOSURES

1. *Unio tumidus*

Photo by © Michal Horsák. Online at <<http://mollusca.sav.sk/malacology/img/unio-tumidus/>>

2. *Glochidium Anodonta anatina*

Douda K. 2015. Velcí mlži a jejich hostitelské vazby. *Živa* 5:222–224. Nakladatelství Academia.

3. *Glochidia attached on fish host (Perca fluviatilis)*

Douda K. 2015. Velcí mlži a jejich hostitelské vazby. *Živa* 5:222–224. Nakladatelství Academia.

4. *Glochidia U. tumidus attached on fin of S. cephalus both used in this experiment*

5. *Fish S. cephalus used in this experiment*

6. *Opened glochidia before variability test*

7. *Glochidia after variability test, most of them closed by NaCl, few of them remained opened.*

8. *Table 1*

9. *Table 2*

10. *Table 3*