

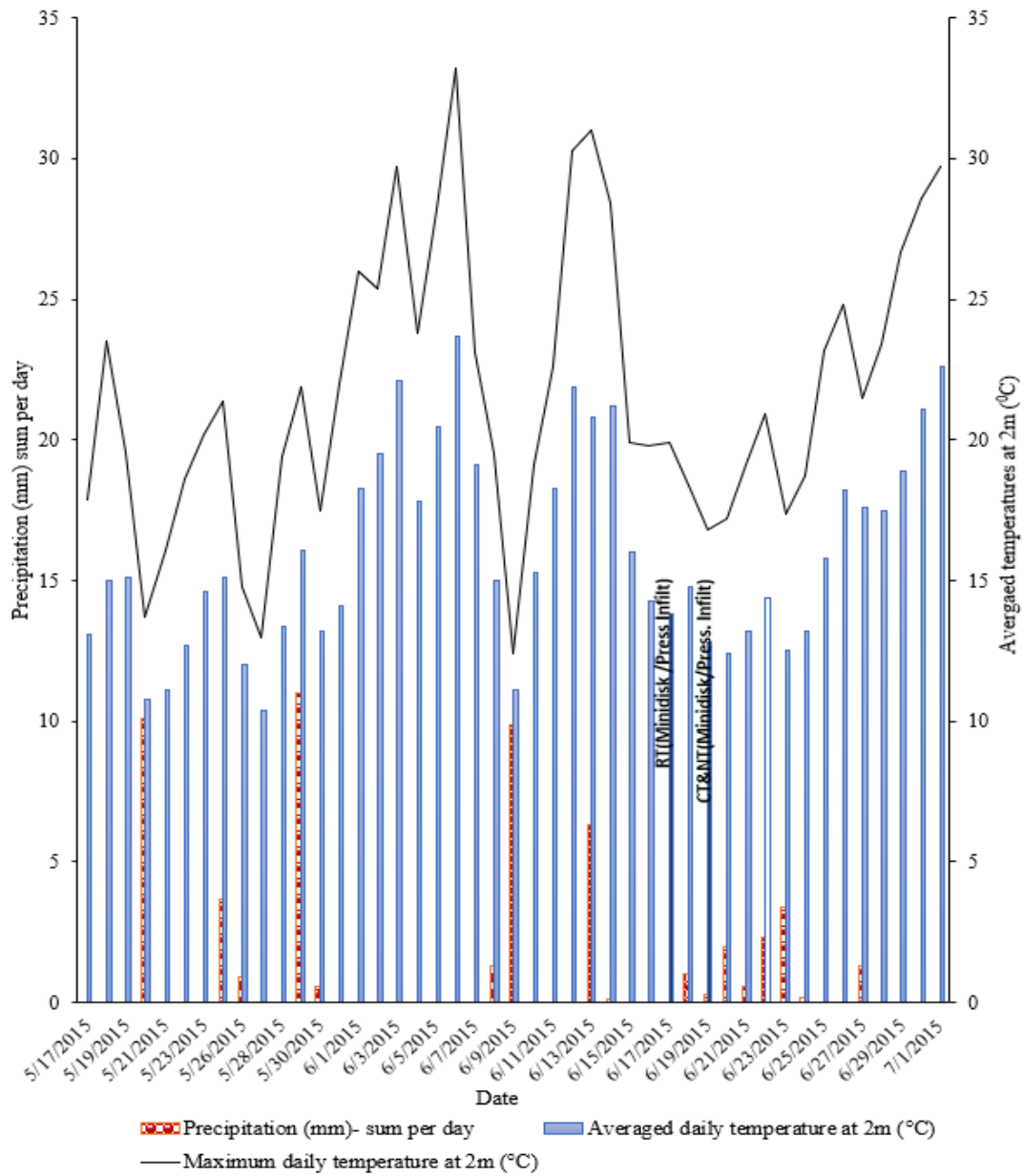
APPENDICES

Appendix 1. Weather conditions during the field experiment in year 2015I

Appendix 2. Overview of all $K(h)$ and K_s data determined in the field and laboratory by different infiltrometers in 2015 and 2018.....II

Appendix 1

Weather conditions during the field experiment in year 2015 (Data source: Agrometeorological station, Crop Research Institute Prague)



Appendix 2

Overview of all $K(h)$ and K_s data determined in the field and laboratory by different infiltrometers in 2015 and 2018

YEAR	INFILTRATION TYPE	REPLICATE	TREATMENT	TENSION	Kh (m/s)	Log Kh
2015	Minidisk	1	RT	5	4.042E-07	-6.3934
2015	Minidisk	2	RT	5	4.042E-07	-6.3934
2015	Minidisk	3	RT	5	4.042E-08	-7.3934
2015	Minidisk	1	RT	1	8.648E-07	-6.06307
2015	Minidisk	2	RT	1	2.100E-06	-5.67772
2015	Minidisk	3	RT	1	9.884E-08	-7.00508
2015	Minidisk	1	NT	5	3.133E-06	-5.5041
2015	Minidisk	2	NT	5	6.177E-07	-6.2092
2015	Minidisk	1	NT	1	4.042E-08	-7.3934
2015	Minidisk	2	NT	1	1.235E-07	-6.90817
2015	Minidisk	1	CT	5	2.021E-07	-6.69443
2015	Minidisk	2	CT	5	9.095E-07	-6.04122
2015	Minidisk	1	CT	1	1.235E-06	-5.90817
2015	Minidisk	2	CT	1	4.324E-06	-5.3641
2018	Minidisk	1	RT	5	1.213E-06	-5.91628
2018	Minidisk	2	RT	5	8.084E-07	-6.09237
2018	Minidisk	3	RT	5	1.011E-06	-5.99546
2018	Minidisk	1	RT	3	3.799E-06	-5.42033
2018	Minidisk	2	RT	3	3.129E-06	-5.50465
2018	Minidisk	3	RT	3	2.682E-06	-5.5716
2018	Minidisk	1	RT	1	6.425E-06	-5.19216
2018	Minidisk	2	RT	1	8.031E-06	-5.09525
2018	Minidisk	3	RT	1	5.683E-06	-5.24541
2018	Minidisk	1	NT	5	2.021E-07	-6.69443
2018	Minidisk	2	NT	5	5.053E-07	-6.29649
2018	Minidisk	3	NT	5	1.011E-05	-4.99546
2018	Minidisk	1	NT	3	8.939E-07	-6.04872
2018	Minidisk	2	NT	3	7.821E-07	-6.10671
2018	Minidisk	3	NT	3	5.587E-05	-4.25284
2018	Minidisk	1	NT	1	2.224E-06	-5.65289
2018	Minidisk	2	NT	1	2.347E-06	-5.62941
2018	Minidisk	3	NT	1	1.359E-04	-3.86677
2018	Minidisk	1	CT	5	7.074E-07	-6.15036
2018	Minidisk	2	CT	5	7.074E-07	-6.15036
2018	Minidisk	3	CT	5	1.213E-06	-5.91628
2018	Minidisk	1	CT	3	1.117E-06	-5.95181
2018	Minidisk	2	CT	3	2.011E-06	-5.69654
2018	Minidisk	3	CT	3	2.235E-06	-5.65078
2018	Minidisk	1	CT	1	3.212E-06	-5.49319
2018	Minidisk	2	CT	1	2.842E-06	-5.54644
2018	Minidisk	3	CT	1	3.706E-06	-5.43104

YEAR	INFILTRATION TYPE	REPLICATE	TREATMENT	Kh (m/s)	Log Kh
2015	Pressure infiltrometer	1	RT	1.814E-06	-5.741298778
2015	Pressure infiltrometer	2	RT	1.101E-04	-3.958035455
2015	Pressure infiltrometer	3	RT	1.690E-06	-5.772207685
2015	Pressure infiltrometer	4	RT	6.148E-05	-4.211276003
2015	Pressure infiltrometer	5	RT	6.864E-05	-4.163424171
2015	Pressure infiltrometer	1	NT	6.924E-05	-4.159645781
2015	Pressure infiltrometer	2	NT	1.481E-05	-4.829394669
2015	Pressure infiltrometer	3	NT	5.068E-06	-5.295166885
2015	Pressure infiltrometer	4	NT	7.463E-06	-5.127115181
2015	Pressure infiltrometer	5	NT	3.700E-04	-3.43174096
2015	Pressure infiltrometer	1	CT	7.700E-06	-5.113506855
2015	Pressure infiltrometer	2	CT	2.091E-05	-4.679702706
2015	Pressure infiltrometer	3	CT	9.786E-06	-5.009392715
2015	Pressure infiltrometer	4	CT	5.087E-05	-4.293561358
2015	Pressure infiltrometer	5	CT	1.520E-05	-4.81804563
2018	Pressure infiltrometer	1	RT	4.899E-05	-4.309859218
2018	Pressure infiltrometer	2	RT	6.076E-05	-4.216380093
2018	Pressure infiltrometer	3	RT	6.838E-05	-4.165057669
2018	Pressure infiltrometer	4	RT	8.566E-05	-4.067202791
2018	Pressure infiltrometer	5	RT	9.538E-05	-4.020529163
2018	Pressure infiltrometer	1	NT	4.565E-05	-4.340529887
2018	Pressure infiltrometer	2	NT	5.773E-05	-4.238577262
2018	Pressure infiltrometer	3	NT	2.970E-05	-4.52721422
2018	Pressure infiltrometer	4	NT	1.264E-05	-4.898166508
2018	Pressure infiltrometer	5	NT	4.036E-05	-4.394002957
2018	Pressure infiltrometer	1	CT	2.371E-04	-3.625137683
2018	Pressure infiltrometer	2	CT	7.063E-05	-4.151016285
2018	Pressure infiltrometer	3	CT	7.069E-05	-4.150628062
2018	Pressure infiltrometer	4	CT	1.113E-04	-3.953560173
2018	Pressure infiltrometer	5	CT	5.314E-05	-4.274616671

Year	Infiltration type	REPLICATE	Treatment	Ksat values	Dry bulk density (g/cm3)	Log Ksat
2018	K-Sat	Sample 1	RT	1.212E-05	1.42	-4.9165
2018	K-Sat	Sample 2	RT	4.060E-04	1.19	-3.39147
2018	K-Sat	Sample 3	RT	2.637E-04	1.22	-3.57894
2018	K-Sat	Sample 4	NT	1.458E-04	1.19	-3.83624
2018	K-Sat	Sample 5	NT	5.604E-05	1.23	-4.25148
2018	K-Sat	Sample 6	NT	5.054E-05	1.20	-4.29636
2018	K-Sat	Sample 7	CT	2.607E-04	1.14	-3.58391
2018	K-Sat	Sample 8	CT	3.386E-04	1.12	-3.47037